



OFFICE SPACES FOR LEASE

CENTRAL AVE N

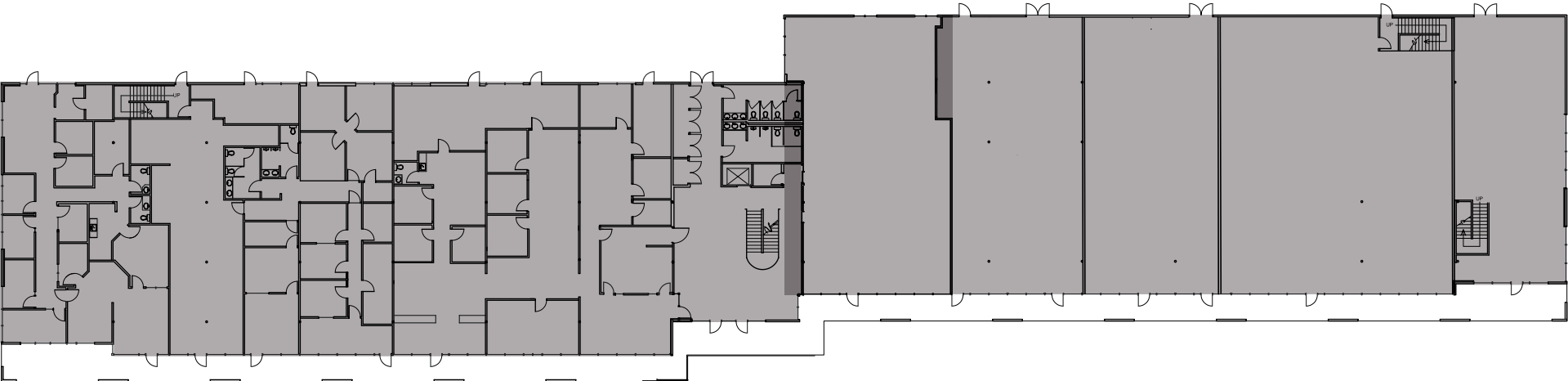
# KENT BUSINESS CAMPUS

*834 - 3,527 SF Office Spaces Available for Lease in Kent, WA*

827 - 841 CENTRAL AVE N, KENT WA 98032

FIRST  
FLOOR PLAN

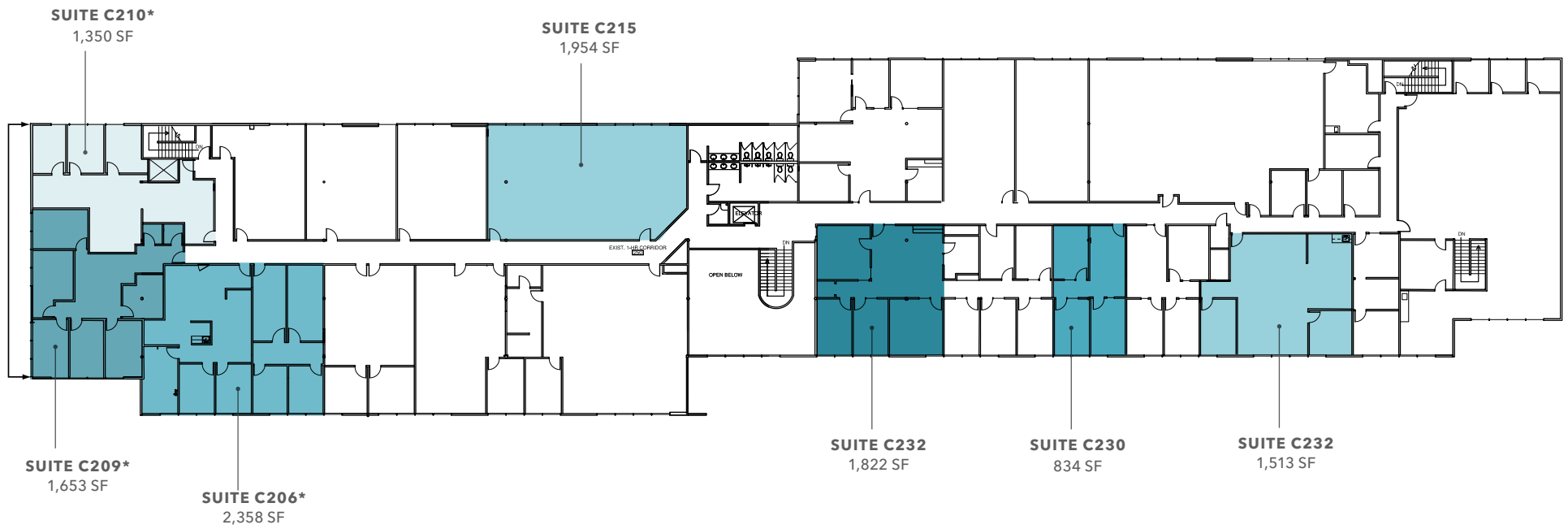
*FULLY*  
LEASED



# SECOND FLOOR PLAN

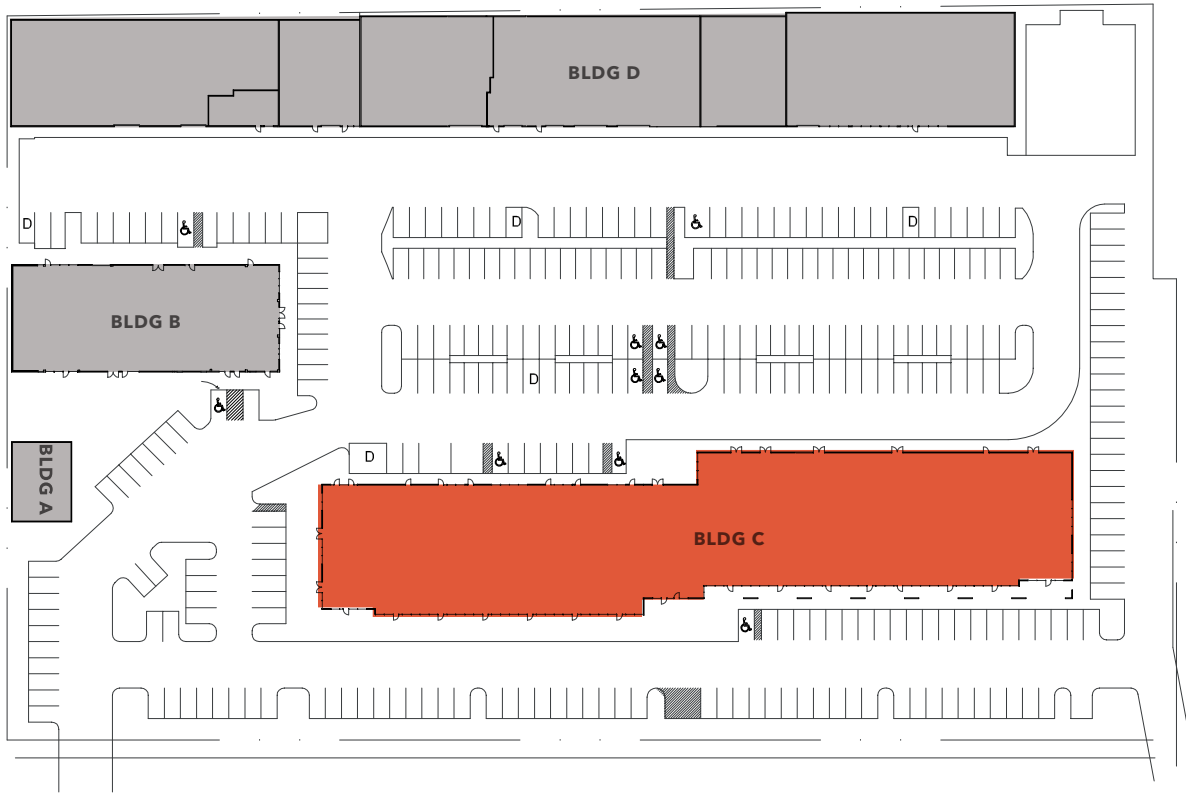
*NOW*  
AVAILABLE FOR LEASE

*CONTACT*  
BROKERS FOR RATES



\*can be combined for 5,361 SF

# SITE PLAN



## BUILDING C | FIRST FLOOR

Suite #	Tenant
C100	ASIAN COUNCELING & REFERRAL SERVICES
C101	JAE HUN LEE
C102	ROYAL NAIL & SPA
C103	JOHNSON JOY INSURANCE
C105/106	UTOPIA
C109A	PERSONNEL PARTNER'S
C109B	AUTOMOTIVE SYSTEMS
C110	JL ALVAREZ
C112	911 DRIVING SCHOOL
C114	SOUND
C115	EXPRESS PERSONNEL

## BUILDING C | SECOND FLOOR

Suite #	Tenant
C200	EXPRESS PERSONNEL
C201/203	WA STATE AUDITOR
C205	CHESTERFIELD
<b>C206</b>	<b>AVAILABLE   2,358 SF*</b>
<b>C209</b>	<b>AVAILABLE   3,003 SF*</b>
<b>C210</b>	<b>AVAILABLE   1,350 SF*</b>
C211	HINOMOTO
C212	ADVANTAGE EXPRESS
C213	ABHC
C215	AVAILABLE   1,954 SF
C217 C220/226	JEWISH FAMILY SERVICES
C218/219 C231/232	CHILD CARE RESOURCES
C227	METRO ONE LOSS PREVENTION
<b>C228</b>	<b>AVAILABLE   1,513 SF</b>
C229	AMICABLE HEALTHCARE
<b>C230</b>	<b>AVAILABLE   834 SF</b>
<b>C232</b>	<b>AVAILABLE   1,822 SF</b>

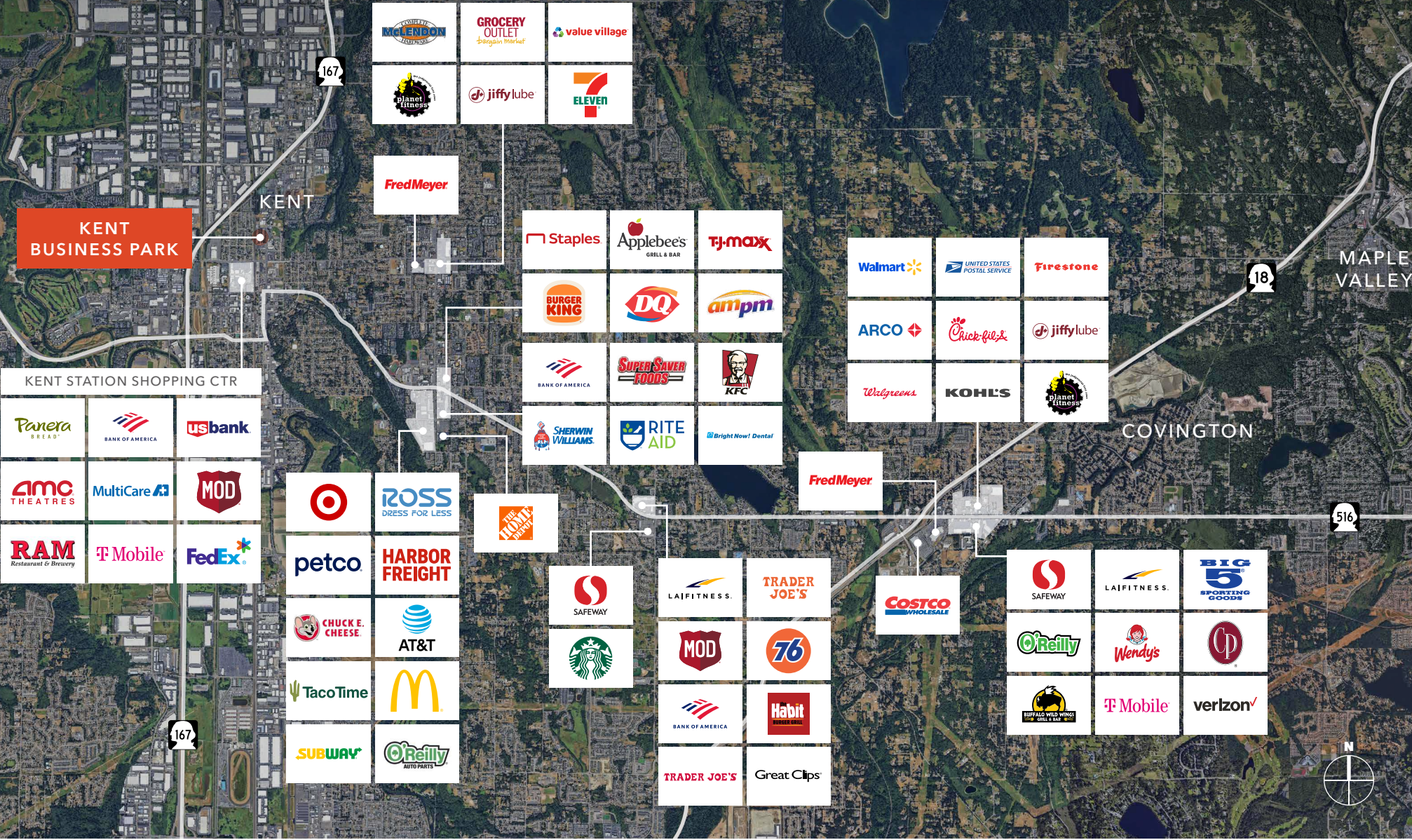
\*can be combined for 5,361 SF



KENT BUSINESS CAMPUS



# KENT BUSINESS CAMPUS



# DEMOGRAPHICS

## POPULATION

	5 Min	10 Min	15 Min
2010 CENSUS	25,219	82,147	194,961
2020 CENSUS	29,123	95,007	226,254
2025 ESTIMATED	30,313	97,434	228,588
2030 PROJECTED	31,157	96,106	223,988

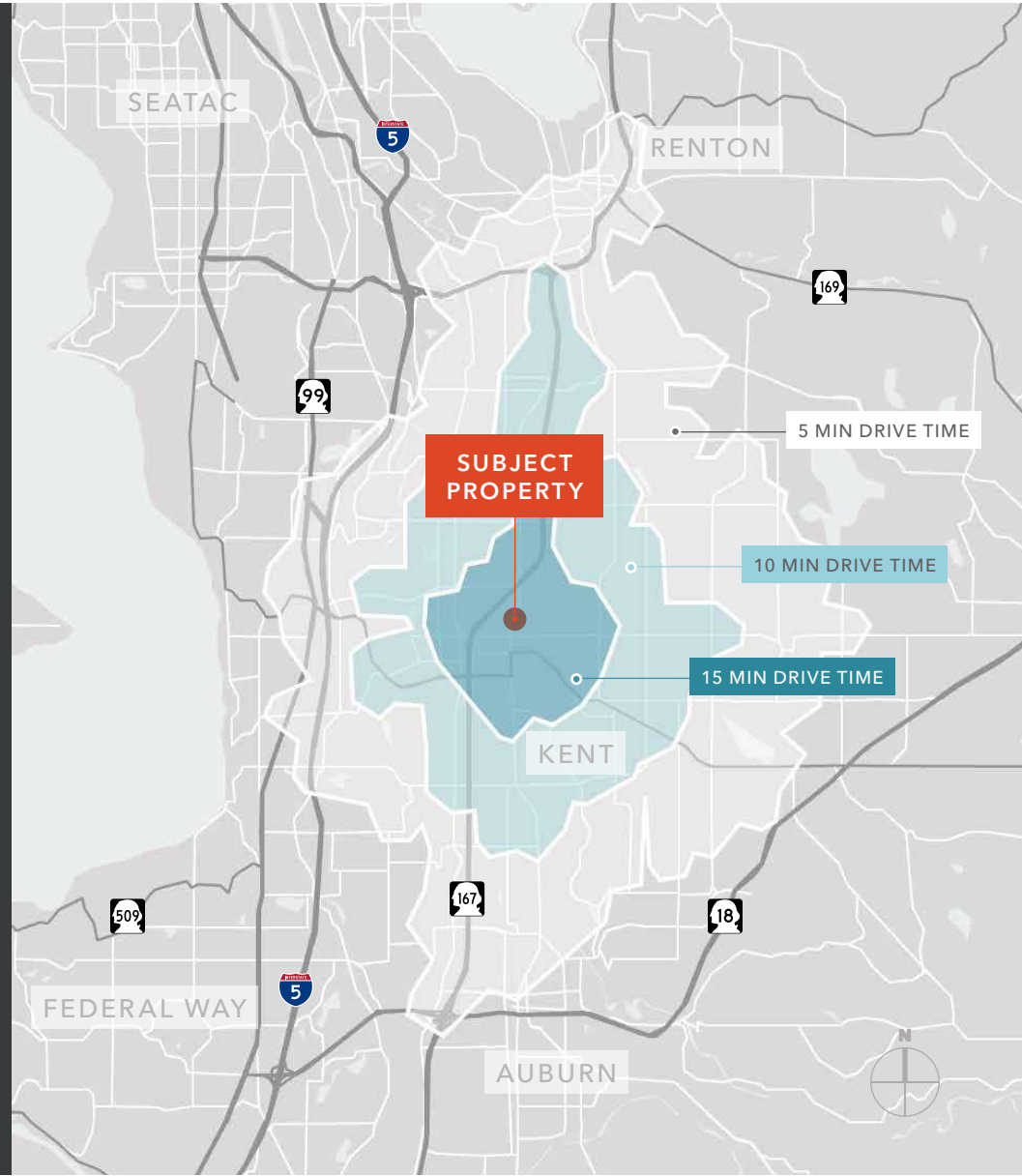
## MEDIAN AGE & GENDER

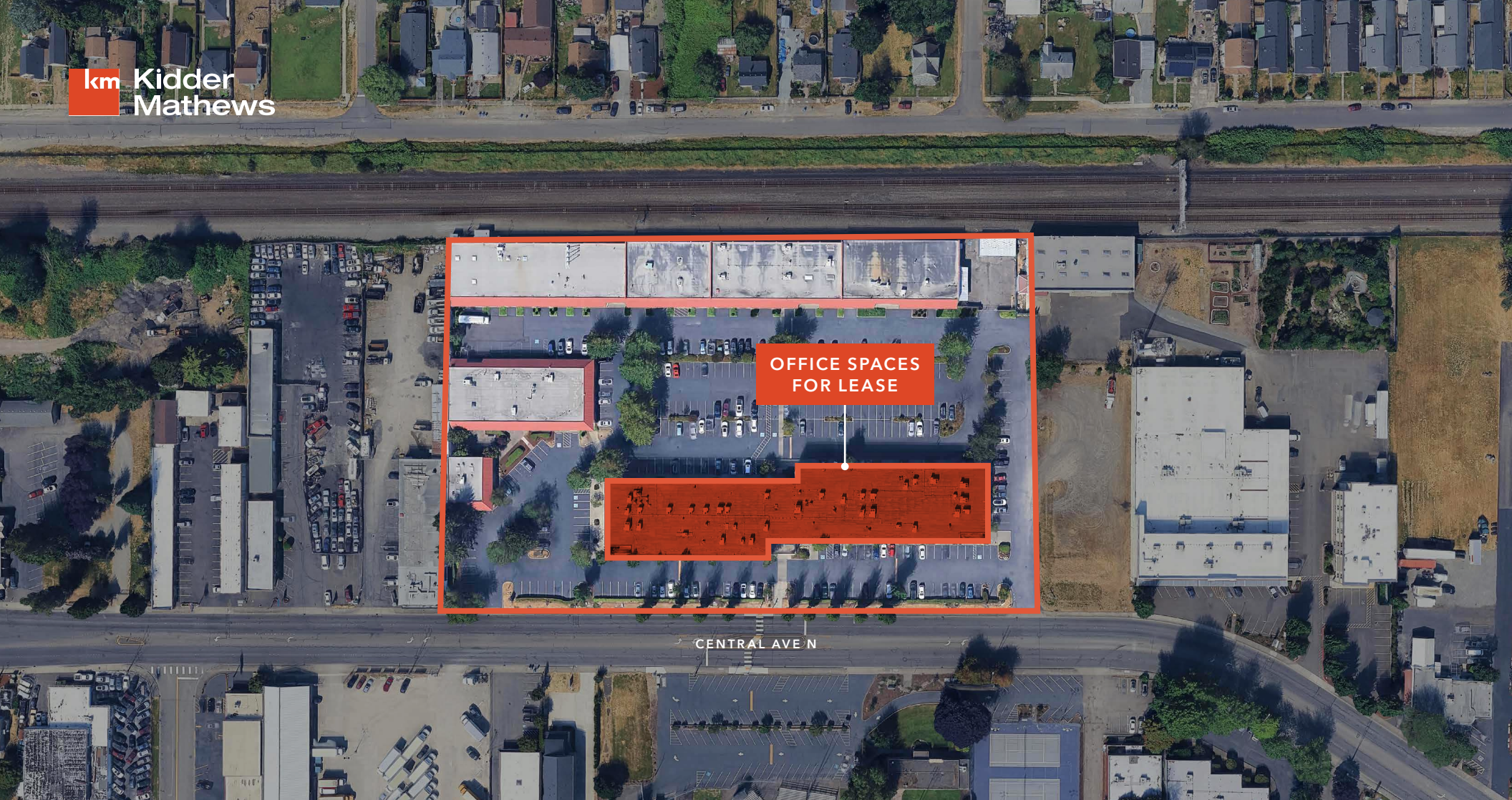
	5 Min	10 Min	15 Min
MEDIAN AGE	33.8	35.0	35.9
% FEMALE	49.1%	49.5%	49.7%
% MALE	50.9%	50.5%	50.3%

## HOUSEHOLD INCOME

	5 Min	10 Min	15 Min
2025 MEDIAN	\$77,974	\$96,786	\$100,403
2030 MEDIAN PROJECTED	\$79,446	\$96,911	\$99,934
2025 AVERAGE	\$98,052	\$121,498	\$127,037
2030 AVERAGE PROJECTED	\$98,095	\$120,547	\$125,677

Data Source: ©2025, Sites USA





*Exclusively listed by*

**BLAKE WEBER**  
Senior Vice President  
206.898.1231  
blake.weber@kidder.com

**DON WHITTLES**  
Senior Vice President  
253.208.2257  
don.whittles@kidder.com

**NED WHALEN**  
Senior Vice President  
206.491.5998  
ned.whalen@kidder.com

**TIM WEBER**  
Executive Vice President  
206.650.0391  
tim.weber@kidder.com

**KIDDER.COM**

This information supplied herein is from sources we deem reliable. It is provided without any representation, warranty, or guarantee, expressed or implied as to its accuracy. Prospective Buyer or Tenant should conduct an independent investigation and verification of all matters deemed to be material, including, but not limited to, statements of income and expenses. Consult your attorney, accountant, or other professional advisor. All Kidder Mathews designs are the sole property of Kidder Mathews. Branded materials and layouts are not authorized for use by any other firm or person.