

# CHASE BANK BUILDING

## SPACE FOR LEASE

601 W MAIN AVENUE, SPOKANE, WA 99201

**ANDY BUTLER, CCIM**

509.385.9121

[andy.butler@kiemlehagood.com](mailto:andy.butler@kiemlehagood.com)

**KIEMLEHAGOOD**

# CHASE BANK BUILDING

601 W Main Avenue, Spokane, WA 99201

<b>Address:</b>	601 W Main Avenue, Spokane, WA 99201
<b>Total Building Size:</b>	±197,198 SF
<b>Zoning:</b>	Downtown Core (DTC)
<b>Emergency Generator:</b>	Yes
<b>Secured Access:</b>	Available



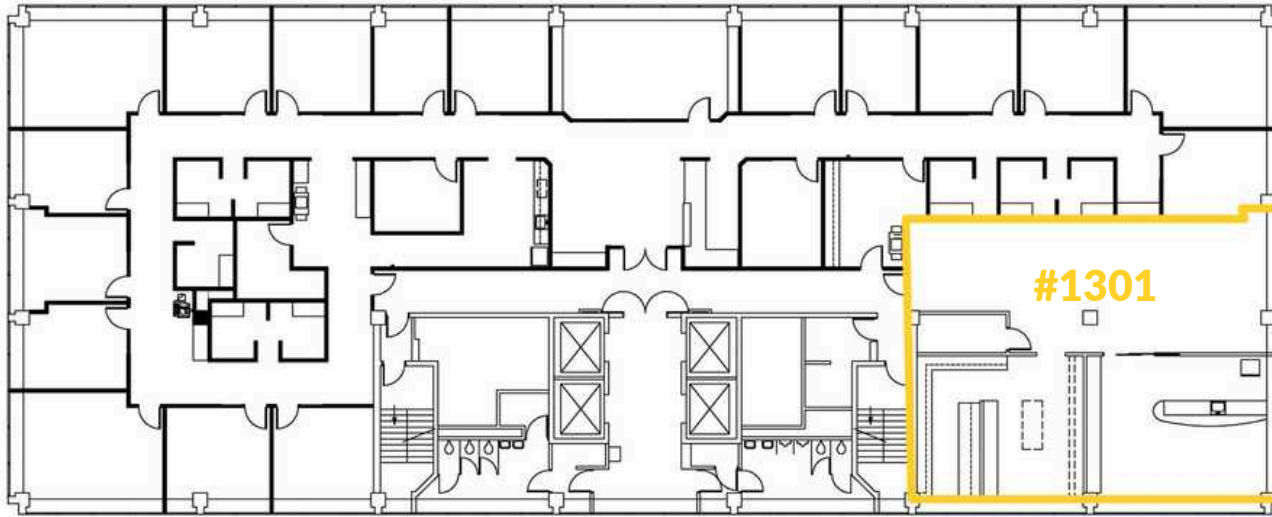
## PROPERTY HIGHLIGHTS

- Premier CBD location
- Located in the heart of Downtown Spokane
- Walking distance to Riverpark Square, Riverfront Park, The Spokane Arena, The Podium, and One Spokane Stadium
- Jimmy John's and Thomas Hammer on street level
- Surrounded by additional shopping, dining, and entertainment options
- Building conference room
- Fitness center
- Onsite property management
- Convenient access to STA Central City Line
- Part of the Skywalk System



# THIRTEENTH FLOOR |

**CHASE BANK BUILDING**  
601 W Main Avenue, Spokane, WA 99201

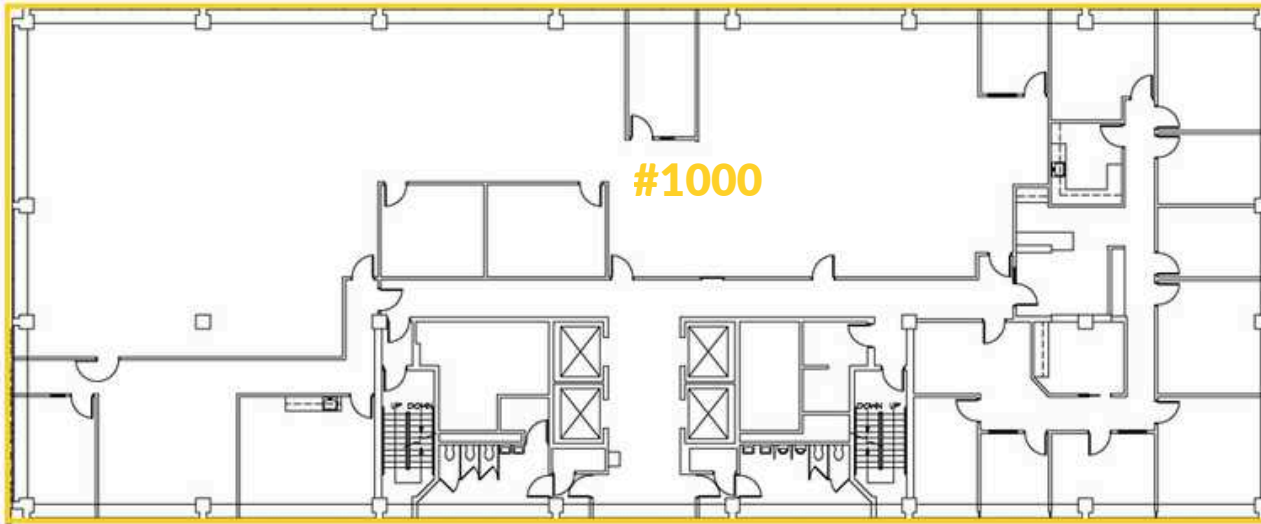


## 13TH FLOOR

Suite #1301 | ±3,059 RSF  
\$22.00 PSF (\$5,608 / Mo)

Open work area  
Kitchenette  
City Views

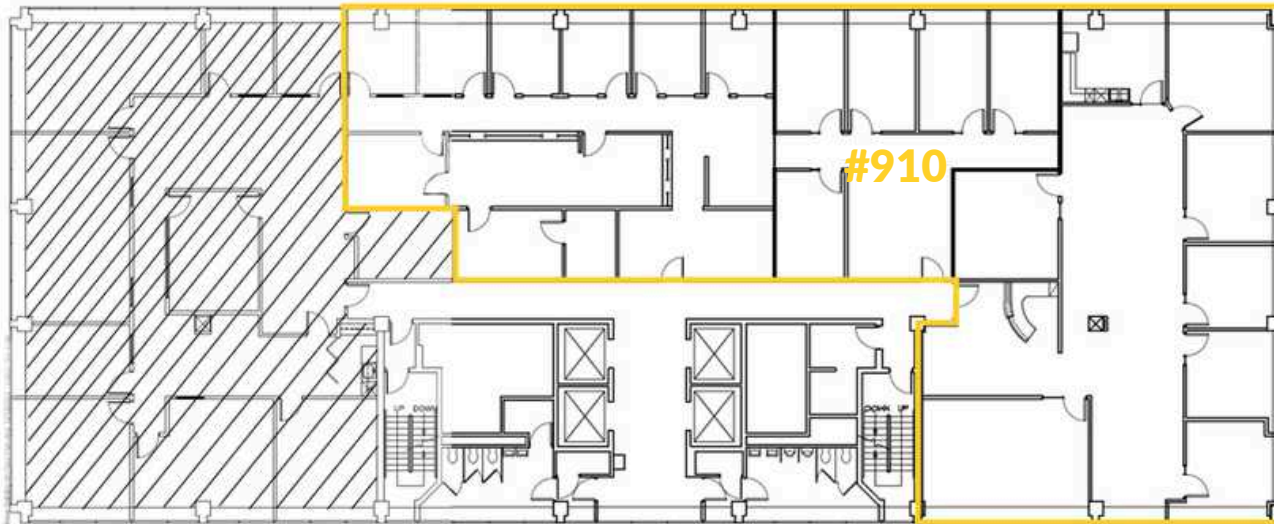




### 10TH FLOOR

---

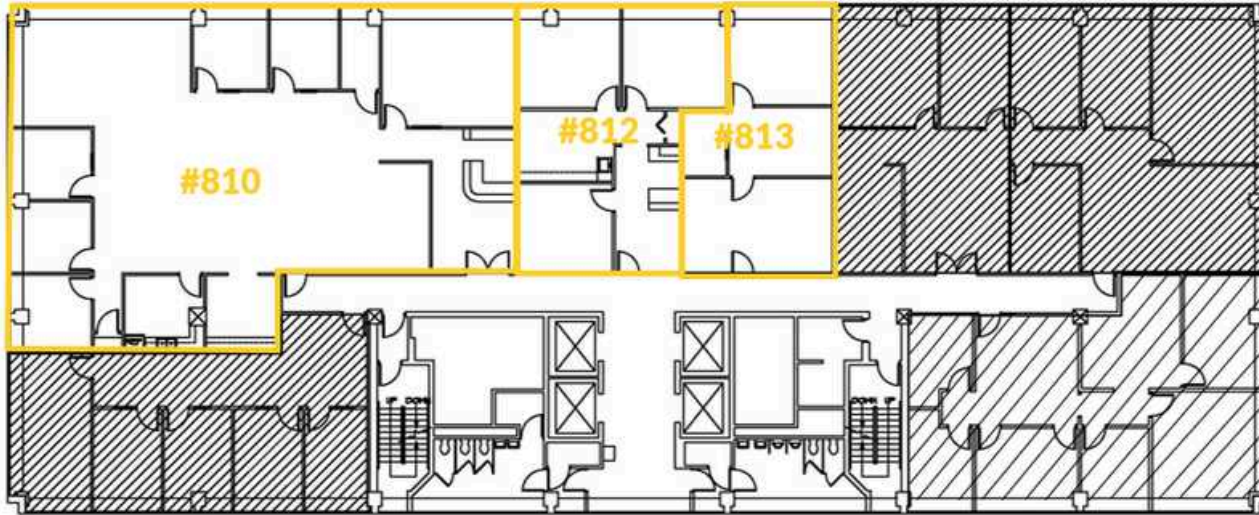
Suite #1000 | ±12,556 RSF  
\$22.00 PSF (\$23,019 / Mo)  
Open Floor Plan  
Conference Room  
Break Room



### 9TH FLOOR

---

Suite #910 | ±7,295 RSF  
\$22.00 PSF ( \$13,374 / Mo)  
Multiple Private Offices  
Open Work Areas  
Break Room  
Reception  
Two Conference Rooms

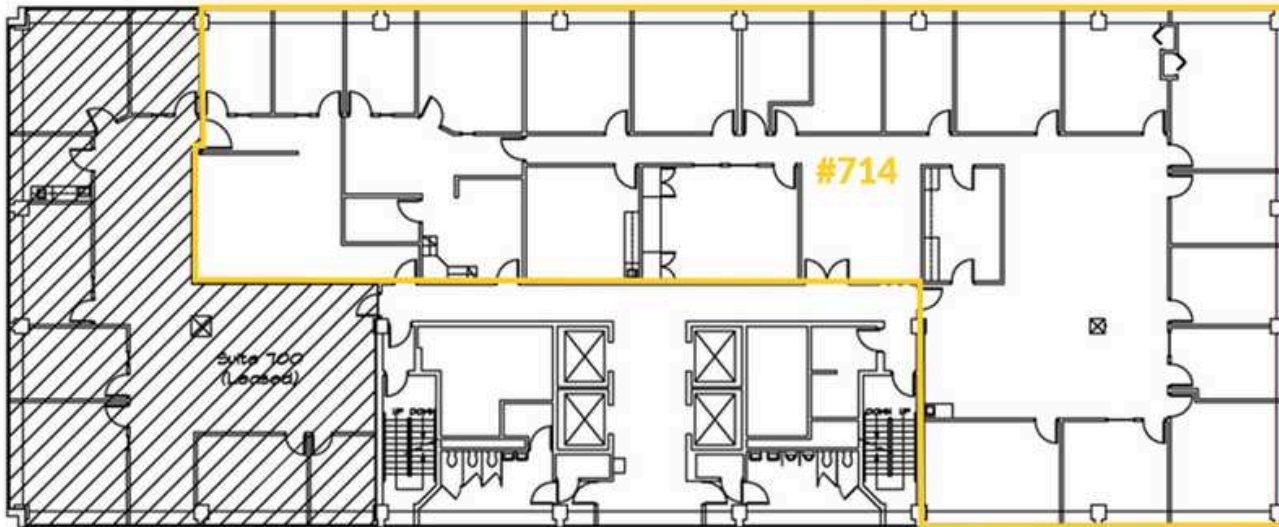


### 8TH FLOOR

Suite #810 | ±3,519 RSF  
\$22.00 PSF (\$6,452 / Mo)  
5 offices Reception Area  
Break Room Conference  
Room Open Work Area

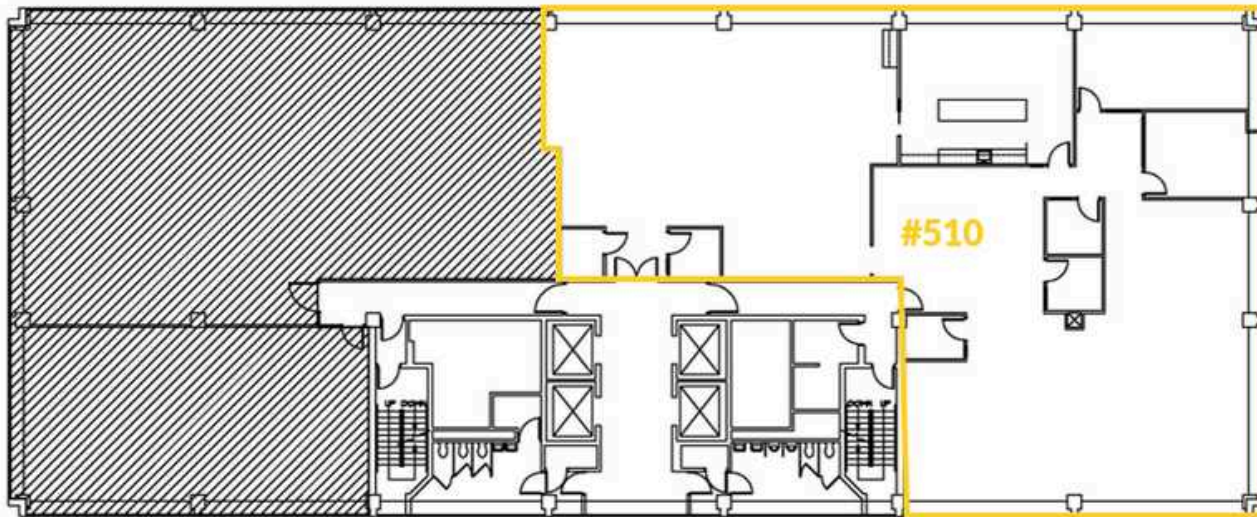
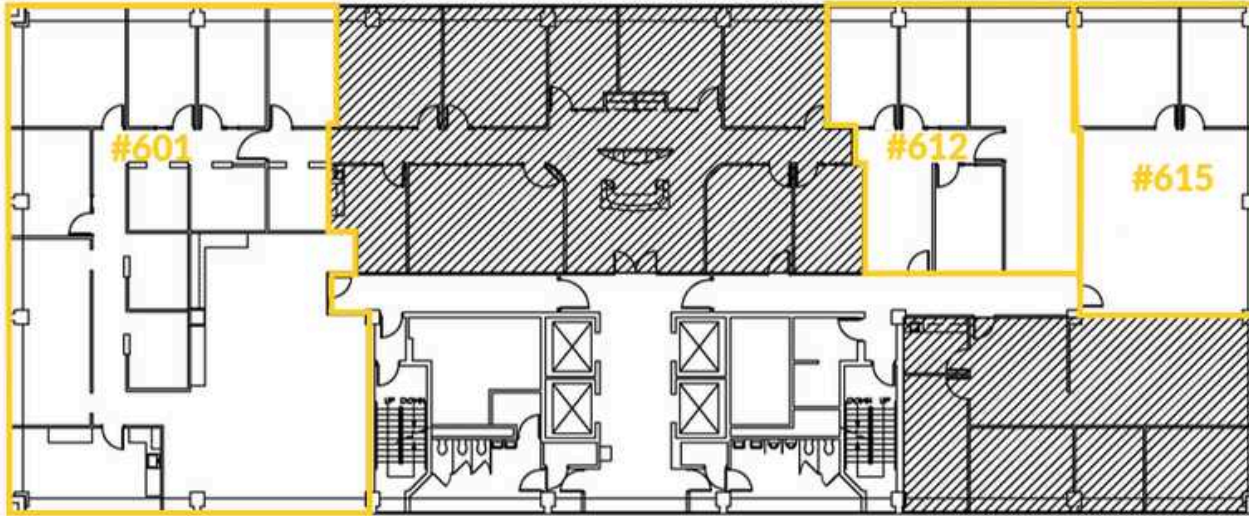
Suite #812 | ±1,120 RSF  
\$22.00 PSF (\$2,053 / Mo)  
3 offices

Suite #813 | ±804 RSF  
\$22.00 PSF (\$1,474 / Mo)  
2 offices  
Conference Room



### 7TH FLOOR

Suite #714 | ±8,499 RSF  
\$22.00 PSF (\$15,582 / Mo)  
15+ Offices Break Room  
Conference Room



### 6TH FLOOR

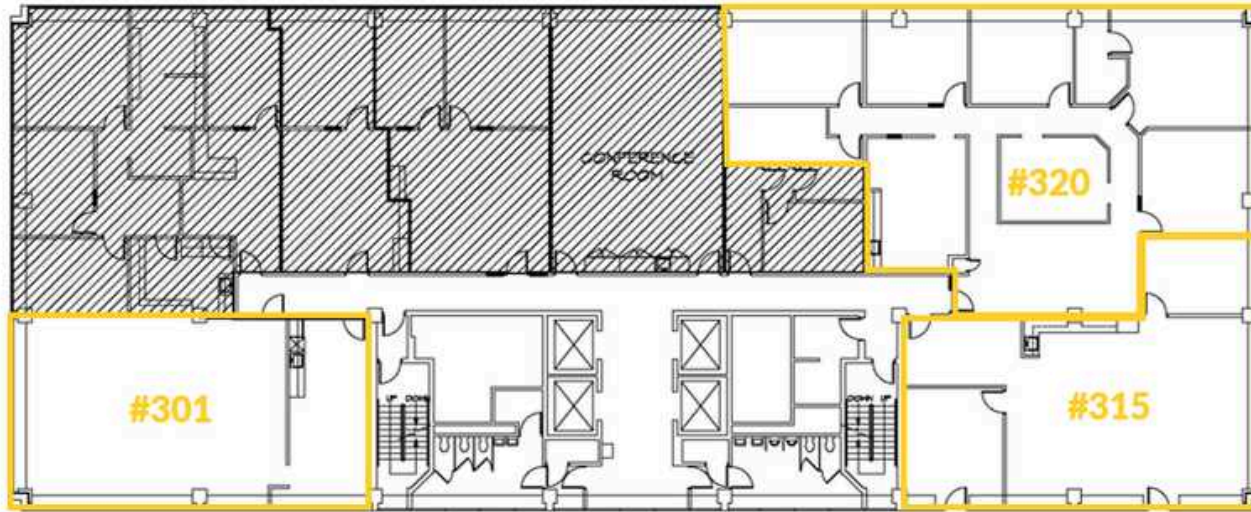
Suite #601 |  $\pm 4,452$  RSF  
\$22.00 PSF (\$7,179 / Mo)  
Multiple Offices Break &  
Conference Rooms  
Open Work Area

Suite #612 |  $\pm 1,390$  RSF  
\$22.00 PSF (\$2,548 / Mo)  
2 offices  
Conference Room

Suite #615 |  $\pm 1,281$  RSF  
\$22.00 PSF (\$2,349 / Mo)  
2 offices Open Work Area

### 5TH FLOOR

Suite #510 |  $\pm 6,247$  RSF  
\$22.00 PSF (\$11,453 / Mo)  
Open Office Concept  
Large Breakroom



### 3RD FLOOR

Suite #301 | ±1,562 RSF  
\$22.00 PSF (\$2,862 / Mo)  
5 offices Break  
Conference Rooms

Suite #315 | ±1,851 RSF  
\$22.00 PSF (\$3,394 / Mo)  
1 Office  
Conference Room  
Open Concept  
Patio Access

Suite #320 | ±2,994 RSF  
\$22.00 PSF (\$5,489 / Mo)  
5 Offices Break  
Conference Rooms



Patio Access on the 3<sup>rd</sup> Floor



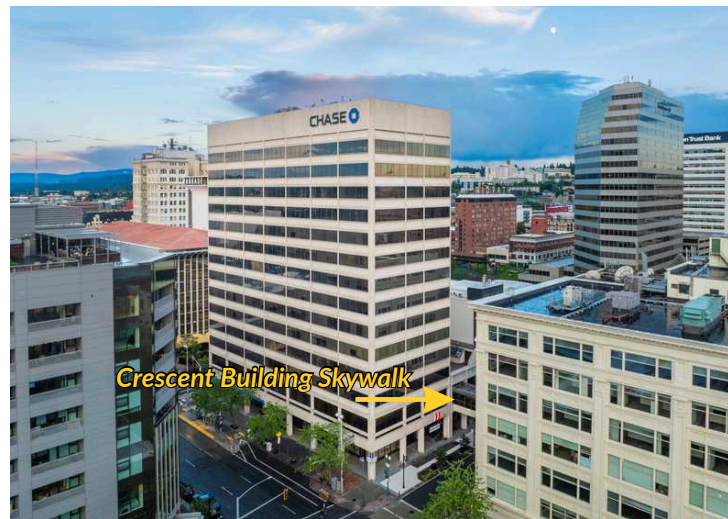
## 2ND FLOOR

Suite #200 |  $\pm 1,881$  RSF  
\$22.00 PSF (\$3,449 / Mo)  
3 Offices  
Open Floor Plan  
Break room

Suite #201 |  $\pm 2,833$  RSF  
\$22.00 PSF (\$5,194 / Mo)  
2 Offices  
Corner Suite

Suite #202 |  $\pm 605$  RSF  
\$22.00 PSF (\$1,109 / Mo)  
Open Floor Plan  
Skywalk Visibility

Suite #207 |  $\pm 755$  RSF  
\$22.00 PSF (\$1,426 / Mo)  
Open Floor Plan  
Skywalk Visibility



# LOWER LEVEL & FIRST FLOOR |

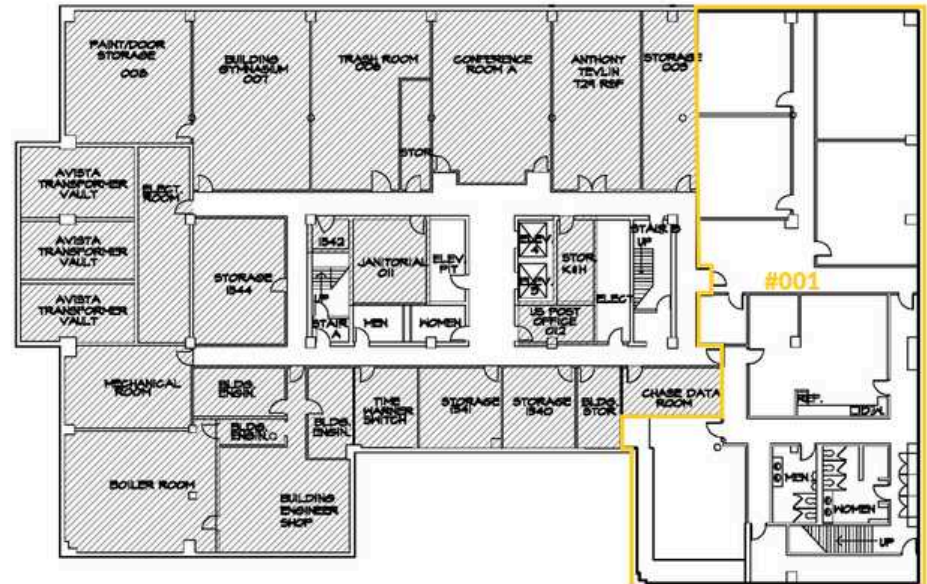
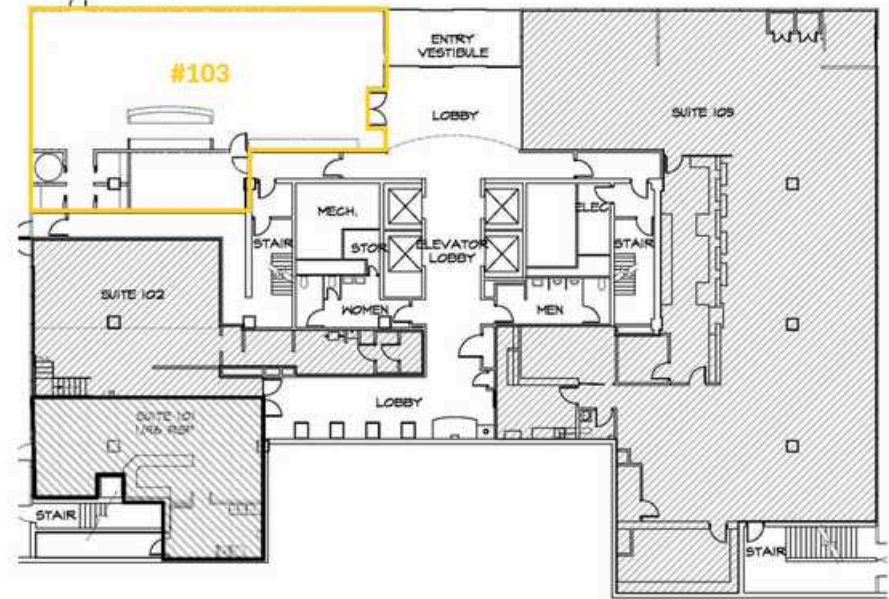
**CHASE BANK BUILDING**  
601 W Main Avenue, Spokane, WA 99201

## 1ST FLOOR

Suite #103 | ±2,401 RSF  
\$30.00 PSF (\$6,003 / Mo)  
Ground Floor Retail  
Fronting  
Main & Wall  
Exceptional Visibility

## LOWER LEVEL

Suite #001 | ±4,899 RSF  
\$12.00 PSF (\$4,899 / Mo)  
Multiple Offices  
3 Private Offices  
Open Floor Plan  
Break room



# CHASE BANK BUILDING

601 W Main Avenue, Spokane, WA 99201

For Leasing Inquires:

**ANDY BUTLER, CCIM**

509.385.9121

andy.butler@kiemlehagood.com

**KIEMLE  
HAGOOD**

601 W MAIN AVENUE, SUITE 400  
SPOKANE, WA 99201

Kiemle Hagood respects the intellectual property of others: If you believe the copyright in your work has been violated through this Website, please contact our office for notice of claims of copyright infringement. For your complaint to be valid under the Digital Millennium Copyright Act of 1998 (DMCA), you must provide the following information when providing notice of the claimed copyright infringement: Identify the material on the Website that you believe infringes your work, with enough detail so that we may locate it on the Website; provide your address, telephone number and email address; provide a statement that you have a good faith belief that the disputed use is not authorized by the copyright owner, its agent, or the law; provide a statement that the information in the notification is accurate, and under penalty of perjury, that the complaining party is authorized to act on behalf of the owner of an exclusive right that is allegedly infringed; and provide your physical or electronic signature. Upon receiving your complaint, Kiemle Hagood will, upon review, remove content that you believe infringes your copyright if the complaint is found to be valid.

No warranty or representation, expressed or implied, is made by Kiemle Hagood, its agents or its employees as to the accuracy of the information contained herein. All information furnished is from sources deemed reliable and submitted subject to errors, omissions, change of terms and conditions, prior sale, lease or financing, or withdrawal without notice. No one should rely solely on the above information, but instead should conduct their own investigation to independently satisfy themselves.

