

F L Y W A Y
RETAIL + LIVING

TURN-KEY SPACE AVAILABLE
FOR LEASE | DOWNTOWN KENMORE



F L Y W A Y | RETAIL
RETAIL + LIVING

18115 68TH AVE NE, KENMORE, WA

FLYWAY KENMORE

Flyway is a dynamic mixed-use development that is redefining the heart of Downtown Kenmore. This premier destination is seamlessly integrating high-end residential living with a vibrant hub for retail, dining, and entertainment. Strategically located, Flyway is just a short walk from the city's new Town Green, EvergreenHealth Primary Care, and over 300 new apartment homes. This prime positioning ensures a built-in customer base and high foot traffic. The 5,571 square feet of meticulously designed commercial space offers an optimal atmosphere for businesses. With impressive 11'-14' ceilings, a beautifully landscaped breezeway, and dedicated outdoor seating areas, these retail environments are crafted to enhance customer experience. Two spaces are now available. Please contact agents for details.



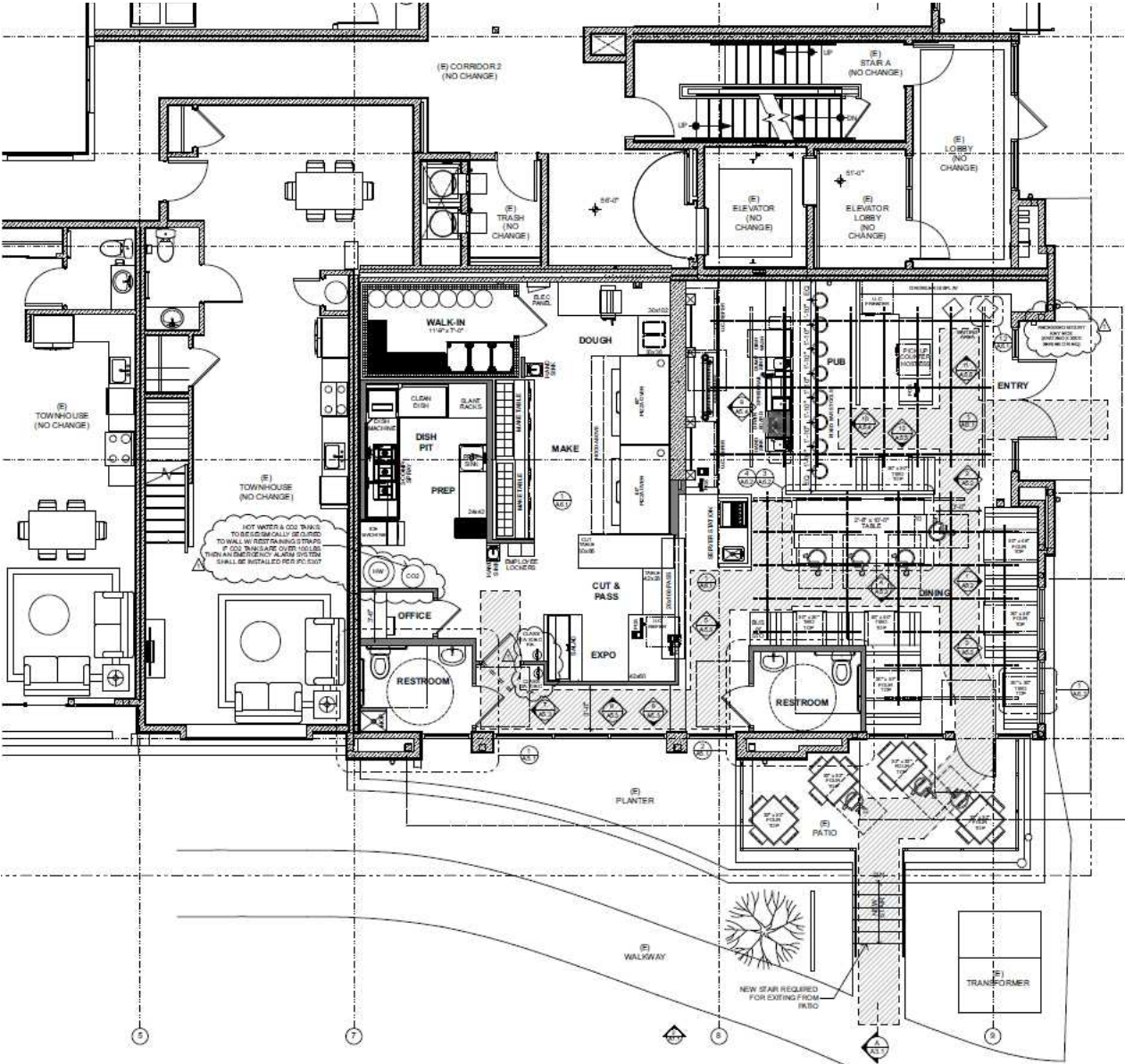
OVERVIEW

Address	18115 68th Ave. NE C103, Kenmore, WA
Former Restaurant	Suite 103 1,826 SF
Former Tasting Room	Suite 102 678 SF
Rate	\$40.00 PSF, NNN
NNN	\$8.66 PSF, Utilities Separately Metered
Ceiling Height	± 11'14"
Residential Units	300
Join	EvergreeHealth, Grin City Orthodontics, Diva Espresso, Mauritius Brown Bubble Tea, the Hangar Cafe



SITE MAP

SUITE C103 | 1,826 SF



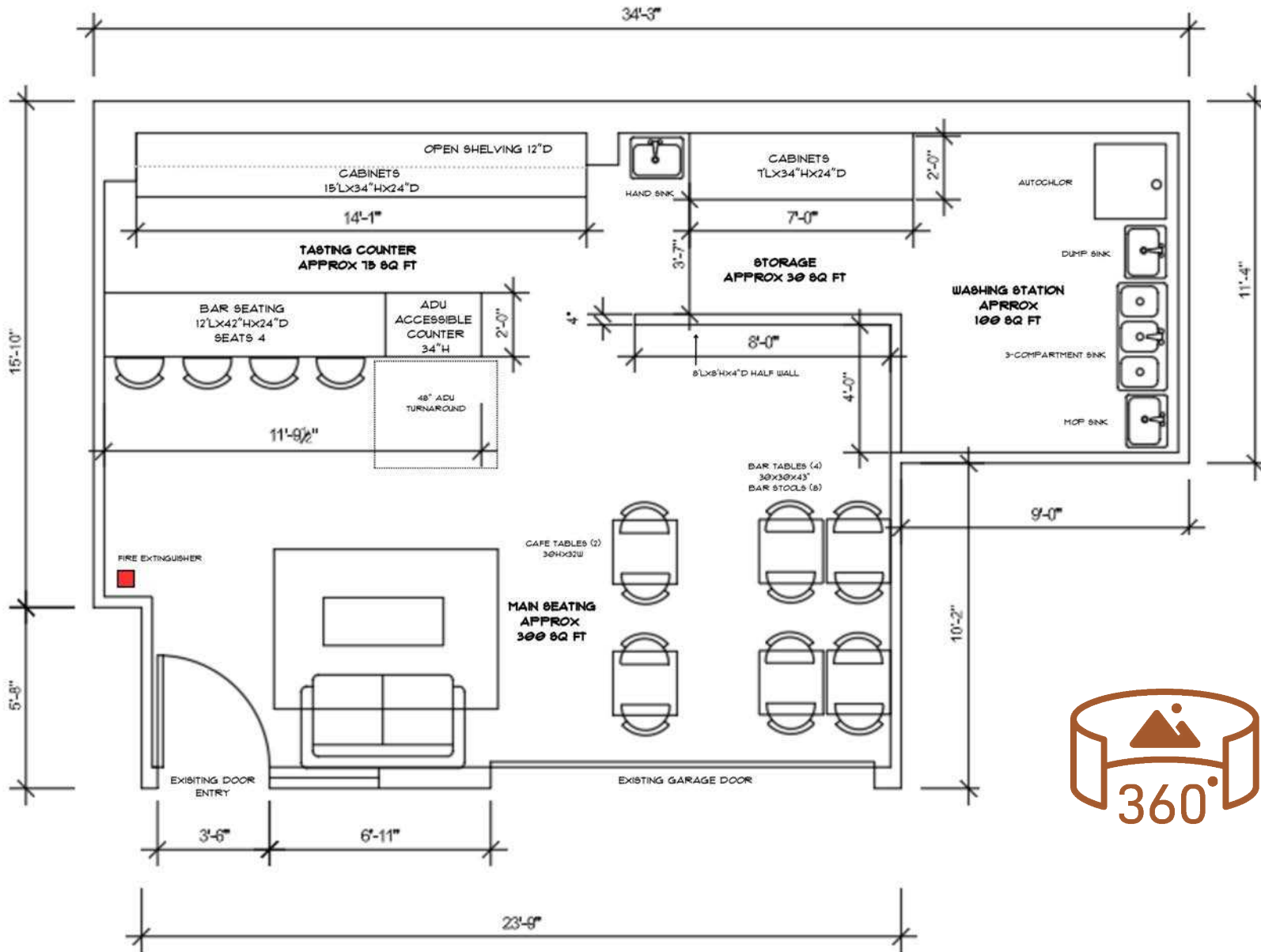
INTERIOR IMAGES

SUITE C103 | 1,826 SF



SITE MAP

SUITE C102 | 678 SF



[CLICK HERE](#) |
VIRTUAL TOUR

OVERALL SITE PLAN

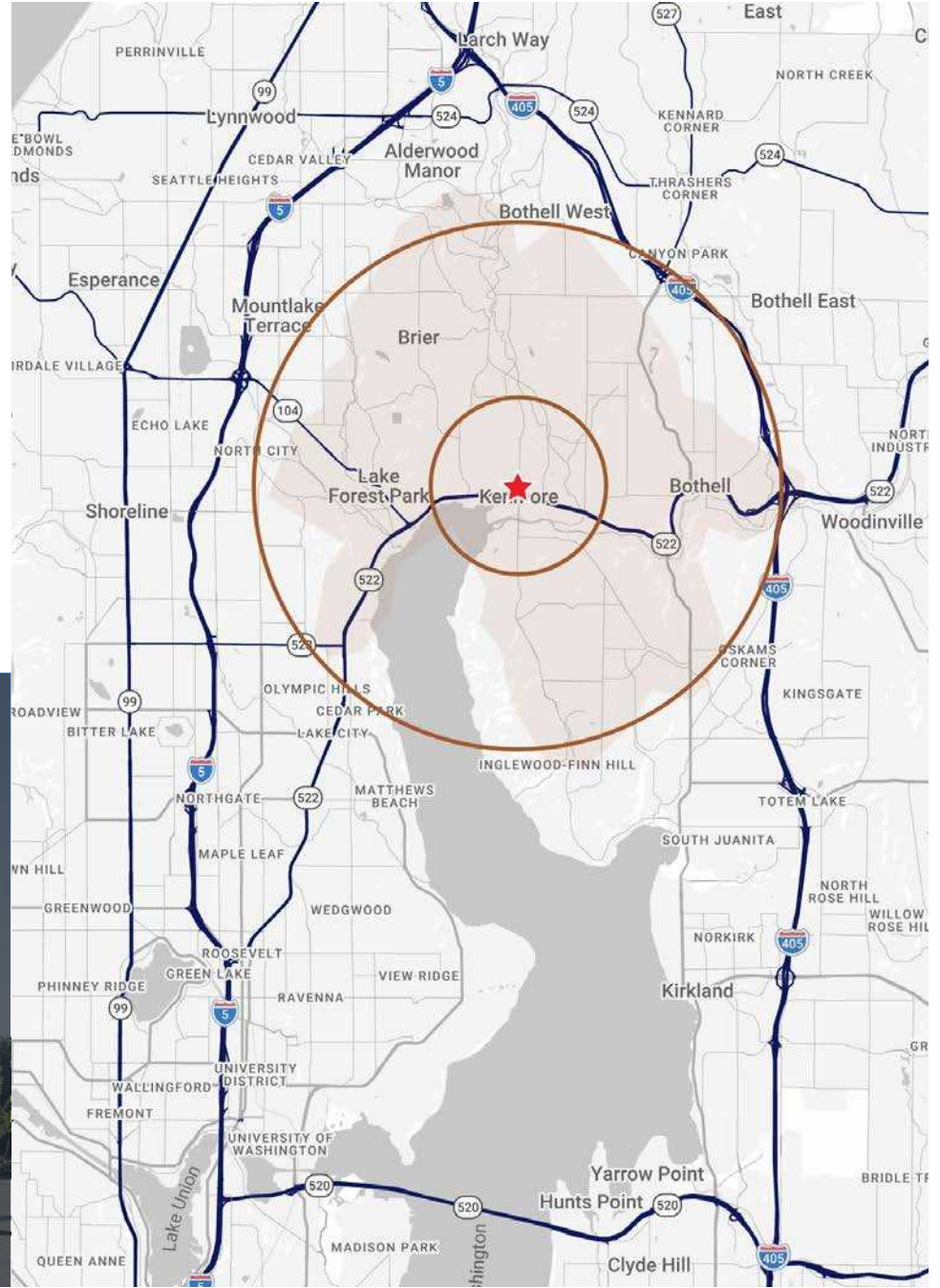


DOWNTOWN KENMORE HIGHLIGHTS



KENMORE OVERVIEW

Kenmore, Washington, is a hidden gem situated at the northernmost tip of Lake Washington, offering a central link between the Eastside and the Seattle metropolitan area. Known as the "Lakeshore City," Kenmore is characterized by its unique waterfront access, including the busy Kenmore Air harbor and extensive public parks like Saint Edward State Park. The city has undergone a significant transformation into a vibrant, walkable community with a focus on high-quality transit-oriented development and a burgeoning downtown core. With its top-rated schools, a strong sense of local pride, and a strategic location along the Burke-Gilman Trail, Kenmore offers an exceptional quality of life that balances natural beauty with urban convenience. The city remains a preferred destination for those seeking a tranquil yet connected environment that values both environmental stewardship and sustainable economic growth.



DEMOGRAPHIC

Data	1 Mile	3 Mile	10 Min. DT
2025 Population	12,868	107,086	86,537
2030 Population	12,600	105,367	84,801
2025 Households	5,446	43,116	34,527
Median HH Income	\$137,569	\$153,111	\$153,005
Avg. HH Size	3.0	3.1	3.1
Median Age	39.4	39.9	40.2
Adj. Daytime Pop.	7,357	50,297	41,009

BRAND STORY

MODERN+ BOUTIQUE | WALKABLE + CONNECTED

Embracing a new way of living Flyway is where modern boutique apartments complete the vibrant heart of Downtown Kenmore. The community is designed for those who seek connection—to the serene beauty of the lake, the dynamic energy of the city's retail and dining scene, and the endless trails that invite exploration.

At Flyway, every journey is memorable. Imagine the day unfolding with seaplanes soaring above, a testament to the freedom of flight, while favorite restaurants and shops are just steps away. With an unparalleled pedestrian connection to the city's best attractions, you are not just living in Kenmore; you are immersed in an A Walk Anywhere Community™.

Discover a home where elevated living meets a truly walkable lifestyle. Flyway is more than an apartment—it's the launchpad for your next adventure.



FLYWAY
RETAIL + LIVING



INQUIRE

SEBASTIAN CAMACHO

(510) 333-0624
sebastian@fwp-inc.com

ANTONIO OLIVERI

(425) 229-2563
antonio@fwp-inc.com

ANGELA OLIVERI

(425) 822 - 5522
aoliveri@fwp-inc.com



Graphics for illustration purposes only and all dimensions are approximate. Photographs, renderings, and floor plans are for representational purposes only and may not reflect the exact features or dimensions.

Prospective tenants or buyers should consult their professional advisors and conduct their own independent investigation. Properties are subject to change in price and/or availability without notice.