

# EVANS

## BUSINESS PARK

17625 NE 65th Street  
Redmond, WA 98052

**4,800 SF AVAILABLE**

**TYLER SLONE** • 425.274.4281  
slone@broderickgroup.com

**ERIC MEUSSNER** • 425.274.4282  
meussner@broderickgroup.com

**PAUL JERUE** • 425.646.5223  
jerue@broderickgroup.com

**MICK LARSEN** • 425.274.4291  
larsen@broderickgroup.com

**BRODERICK**  
• GROUP •

# EVANS

## BUSINESS PARK

17625 NE 65th Street  
Redmond, WA 98052



## PROPERTY HIGHLIGHTS



Nearby restaurants  
& various retail  
amenities



Excellent access  
to SR-520



Grade Level  
Loading Doors



Next door to  
Marymoor Park

The information contained herein has been given to us by the owner or sources which we deem reliable. We have no reason to doubt its accuracy, but we do not guarantee it. Prospective tenants should carefully verify all information contained herein.

**TYLER SLONE** • 425.274.4281  
slone@broderickgroup.com

**ERIC MEUSSNER** • 425.274.4282  
meussner@broderickgroup.com

**PAUL JERUE** • 425.646.5223  
jerue@broderickgroup.com

**MICK LARSEN** • 425.274.4291  
larsen@broderickgroup.com



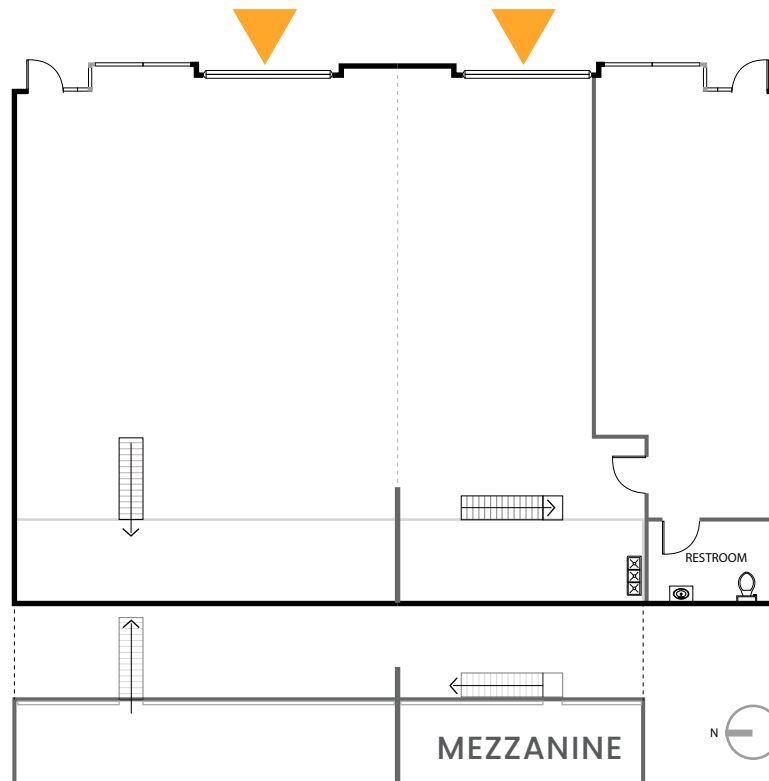
**BRODERICK**  
· GROUP ·

### Suite B250

Approx. 2,400 SF  
Available Now

500 SF Office/Showroom  
1,900 SF Warehouse

Two Grade Level Loading Doors



▲ GRADE LEVEL

**TYLER SLONE** • 425.274.4281  
slone@broderickgroup.com

**ERIC MEUSSNER** • 425.274.4282  
meussner@broderickgroup.com

**PAUL JERUE** • 425.646.5223  
jerue@broderickgroup.com

**MICK LARSEN** • 425.274.4291  
larsen@broderickgroup.com

### Suite B260

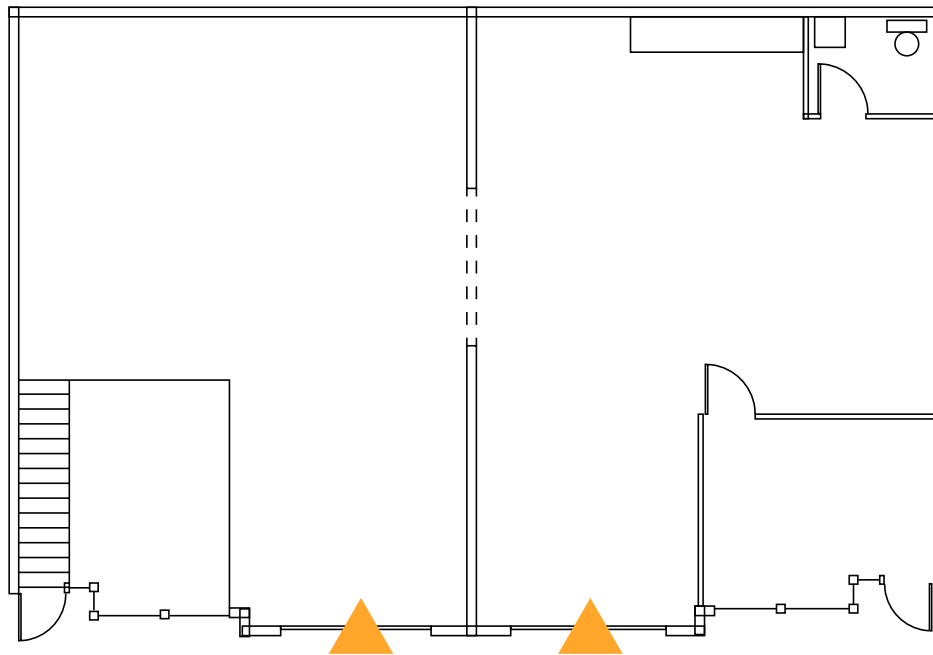
Approx. 2,400 SF

Two Grade Level Loading Doors

Available 30 Days' Notice

Additional Mezzanine

300 SF Office &  
2,100 SF Warehouse



▲ GRADE LEVEL

**TYLER SLONE** • 425.274.4281  
slone@broderickgroup.com

**ERIC MEUSSNER** • 425.274.4282  
meussner@broderickgroup.com

**PAUL JERUE** • 425.646.5223  
jerue@broderickgroup.com

**MICK LARSEN** • 425.274.4291  
larsen@broderickgroup.com



## NEARBY AMENITIES

- COFFEE
- SERVICE
- FOOD OPTION

- |   |   |  |   |
|---|---|--|---|
| <ul style="list-style-type: none"> <li><span style="display: inline-block; width: 15px; height: 15px; background-color: #a6c9e0; margin-right: 5px;"></span> 1. Sammamish Cleaners</li> <li><span style="display: inline-block; width: 15px; height: 15px; background-color: #ff9933; margin-right: 5px;"></span> 2. Pomegranate Bistro</li> <li><span style="display: inline-block; width: 15px; height: 15px; background-color: #ff9933; margin-right: 5px;"></span> 3. Jimmy John's</li> <li><span style="display: inline-block; width: 15px; height: 15px; background-color: #ff9933; margin-right: 5px;"></span> 4. Chipotle</li> <li><span style="display: inline-block; width: 15px; height: 15px; background-color: #ff9933; margin-right: 5px;"></span> 5. Subway</li> <li><span style="display: inline-block; width: 15px; height: 15px; background-color: #ff9933; margin-right: 5px;"></span> 6. Postdoc Brewing</li> <li><span style="display: inline-block; width: 15px; height: 15px; background-color: #004a66; margin-right: 5px;"></span> 7. Peet's Coffee &amp; Tea</li> </ul> | <ul style="list-style-type: none"> <li><span style="display: inline-block; width: 15px; height: 15px; background-color: #ff9933; margin-right: 5px;"></span> 8. Asiana Bistro</li> <li><span style="display: inline-block; width: 15px; height: 15px; background-color: #ff9933; margin-right: 5px;"></span> 9. Panera Bread</li> <li><span style="display: inline-block; width: 15px; height: 15px; background-color: #004a66; margin-right: 5px;"></span> 10. Starbucks</li> <li><span style="display: inline-block; width: 15px; height: 15px; background-color: #a6c9e0; margin-right: 5px;"></span> 11. Rite-Aid</li> <li><span style="display: inline-block; width: 15px; height: 15px; background-color: #ff9933; margin-right: 5px;"></span> 12. Agave Cocina</li> <li><span style="display: inline-block; width: 15px; height: 15px; background-color: #ff9933; margin-right: 5px;"></span> 13. Baskin Robbins</li> <li><span style="display: inline-block; width: 15px; height: 15px; background-color: #ff9933; margin-right: 5px;"></span> 14. Fatburger</li> </ul> | <ul style="list-style-type: none"> <li><span style="display: inline-block; width: 15px; height: 15px; background-color: #a6c9e0; margin-right: 5px;"></span> 15. Bank of America</li> <li><span style="display: inline-block; width: 15px; height: 15px; background-color: #004a66; margin-right: 5px;"></span> 16. Blazin Bagels</li> <li><span style="display: inline-block; width: 15px; height: 15px; background-color: #ff9933; margin-right: 5px;"></span> 17. Mac &amp; Jack's Brewery</li> <li><span style="display: inline-block; width: 15px; height: 15px; background-color: #a6c9e0; margin-right: 5px;"></span> 18. Home Depot</li> <li><span style="display: inline-block; width: 15px; height: 15px; background-color: #a6c9e0; margin-right: 5px;"></span> 19. Fred Meyer</li> <li><span style="display: inline-block; width: 15px; height: 15px; background-color: #004a66; margin-right: 5px;"></span> 20. Discount Tire</li> <li><span style="display: inline-block; width: 15px; height: 15px; background-color: #004a66; margin-right: 5px;"></span> 21. Mercurys Coffee Co.</li> </ul> | <ul style="list-style-type: none"> <li><span style="display: inline-block; width: 15px; height: 15px; background-color: #a6c9e0; margin-right: 5px;"></span> 22. Target</li> <li><span style="display: inline-block; width: 15px; height: 15px; background-color: #a6c9e0; margin-right: 5px;"></span> 23. Kohl's</li> <li><span style="display: inline-block; width: 15px; height: 15px; background-color: #a6c9e0; margin-right: 5px;"></span> 24. ZenRock Fitness</li> <li><span style="display: inline-block; width: 15px; height: 15px; background-color: #a6c9e0; margin-right: 5px;"></span> 25. Redmond Kindercare</li> <li><span style="display: inline-block; width: 15px; height: 15px; background-color: #ff9933; margin-right: 5px;"></span> 26. BJ's Restaurant &amp; Brewhouse</li> <li><span style="display: inline-block; width: 15px; height: 15px; background-color: #ff9933; margin-right: 5px;"></span> 27. Typhoon</li> </ul> |
|---|---|--|---|

**TYLER SLONE** • 425.274.4281  
slone@broderickgroup.com

**ERIC MEUSSNER** • 425.274.4282  
meussner@broderickgroup.com

**PAUL JERUE** • 425.646.5223  
jerue@broderickgroup.com

**MICK LARSEN** • 425.274.4291  
larsen@broderickgroup.com