

OFFICE FOR LEASE

2201 MEDICAL BUILDING

2201 S 19TH STREET, TACOMA, WASHINGTON

**LEE &
ASSOCIATES**
COMMERCIAL REAL ESTATE SERVICES



LISTING INFORMATION

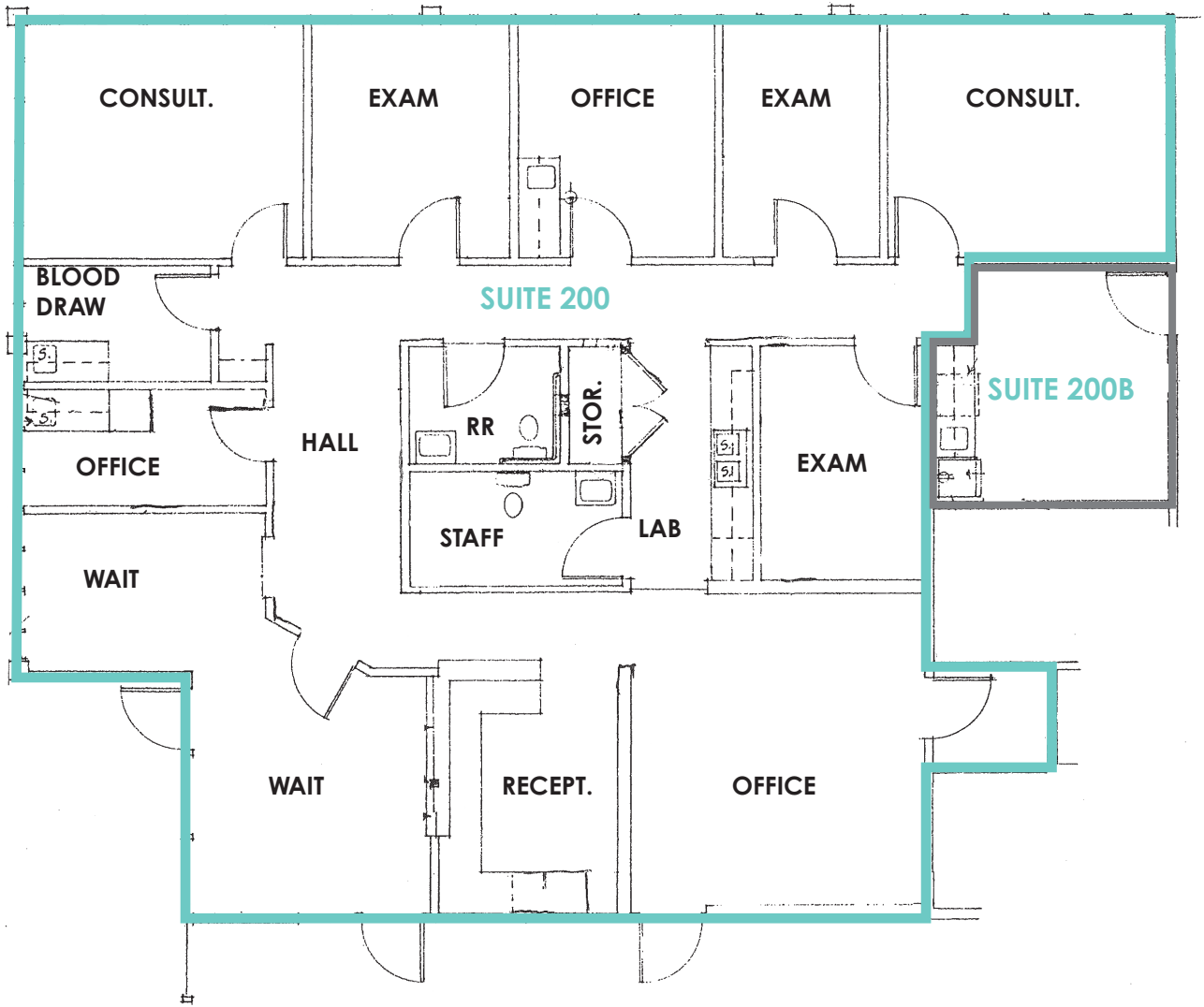
AVAILABLE:	Suite 200: 2,234 SF
	Suite 200B: 188 SF
LEASE RATE:	\$22.00 PSF + NNN
NNN'S:	\$11.70 PSF
PARKING:	4+/1,000

COMMENTS

The property is close to Allenmore Hospital, Tacoma General Hospital, and St. Joseph's Medical Center (Virginia Mason Franciscan Health). Building and Suites are ADA accessible. The site is in close proximity to Highway 16 and Interstate 5.



FLOOR PLAN



AVAILABLE SPACES

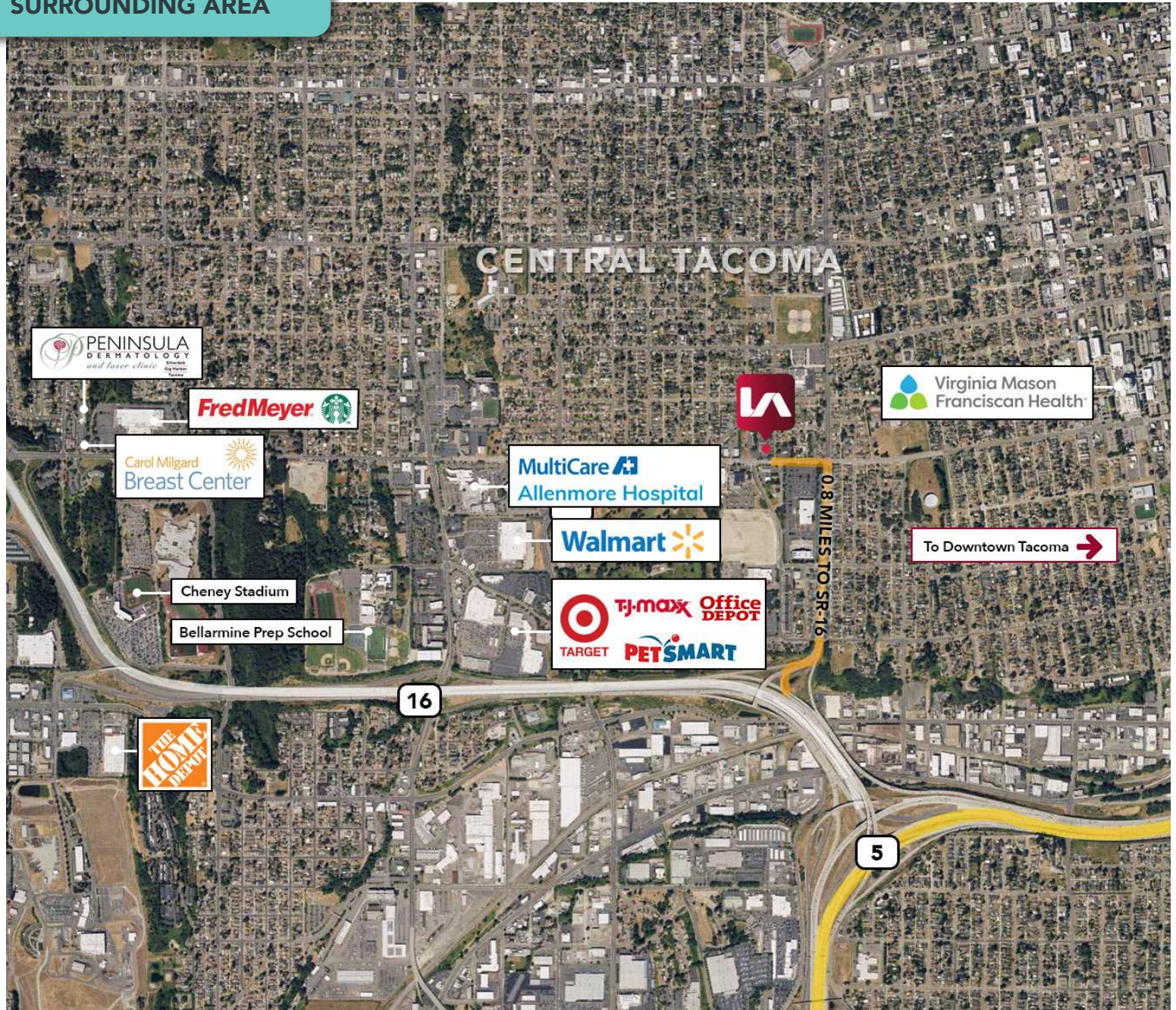
SUITE	SIZE (SF)	LEASE TYPE	LEASE RATE	DESCRIPTION
SUITE 200	2,234 SF	NNN	\$22 SF/Yr	Available now
SUITE 200B	188 SF	NNN	\$560/Month	Sink in suite. NNN's included in lease rate

All information furnished regarding property for sale, rental or financing is from sources deemed reliable, but no warranty or representation is made to the accuracy thereof and same is submitted to errors, omissions, change of price, rental or other conditions prior to sale, lease or financing or withdrawal without notice. No liability of any kind is to be imposed on the broker herein.

2201 MEDICAL BUILDING

2201 S 19TH STREET, TACOMA, WASHINGTON

SURROUNDING AREA



CONTACT

John Bauder, ccim
jbauder@lee-associates.com
D 253-238-0043

Harrison Laird
hlaird@lee-associates.com
D 253-238-0044

All information furnished regarding property for sale, rental or financing is from sources deemed reliable, but no warranty or representation is made to the accuracy thereof and same is submitted to errors, omissions, change of price, rental or other conditions prior to sale, lease or financing or withdrawal without notice. No liability of any kind is to be imposed on the broker herein.