

SAMMAMISH BUSINESS PARK



17825 NE 65TH STREET | REDMOND, WA

BRODERICK
GROUP

SAMMAMISH BUSINESS PARK

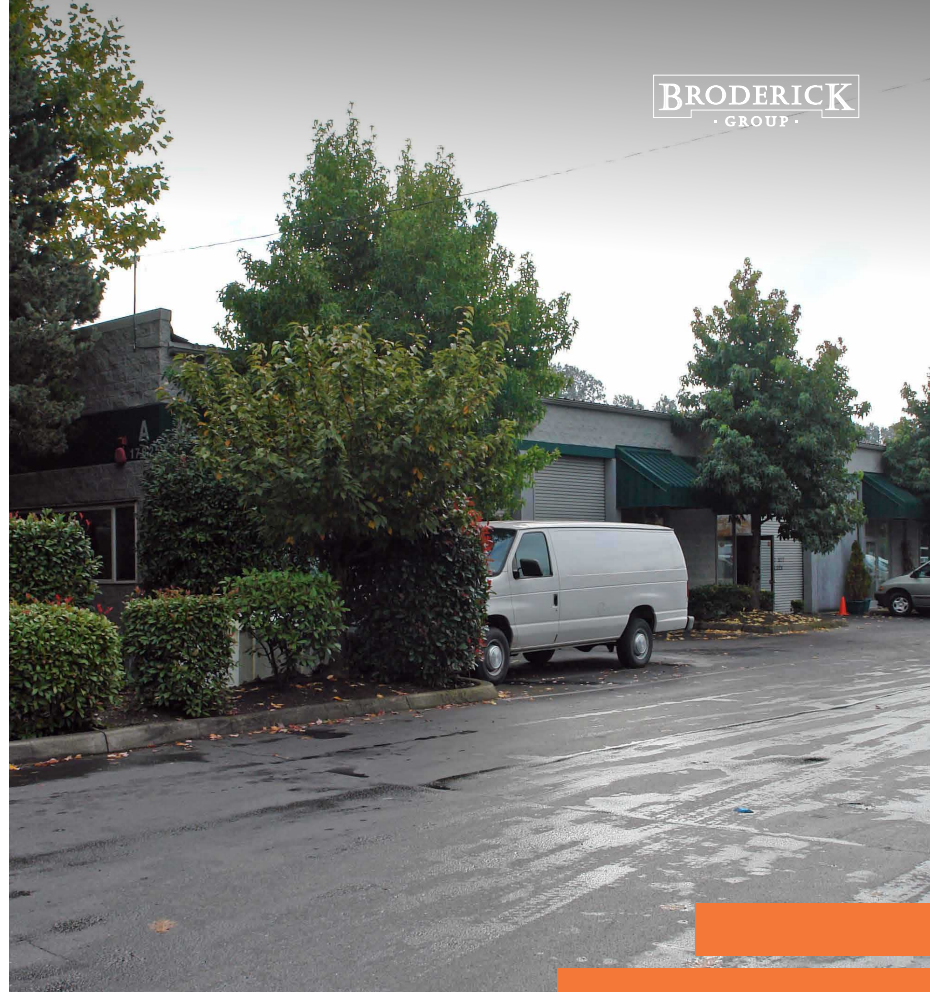
17825 NE 65TH STREET | REDMOND, WA

AVAILABILITIES

BUILDING A			
SUITE	SF	AVAILABLE	COMMENTS
A-100/105	2,140	NOW	Private Office, Conference Room, and Clear-Span Warehouse
A-120/125	2,400	NOW	Private Office and Large Assembly Area
A-135	1,200	NOW	Dead Storage
A-140	1,200	NOW	Small Office and Warehouse
A-150	1,200	NOW	Dead Storage

BUILDING B			
SUITE	SF	AVAILABLE	COMMENTS
B-100	9,479	NOW	Reception Area, 3 Private Offices, and Mezzanine Storage

The information contained herein has been given to us by the owner or sources which we deem reliable. We have no reason to doubt its accuracy, but we do not guarantee it. Prospective tenants should carefully verify all information contained herein.



PROPERTY HIGHLIGHTS



Nearby
restaurants &
various retail
amenities



Excellent
access to
SR-520

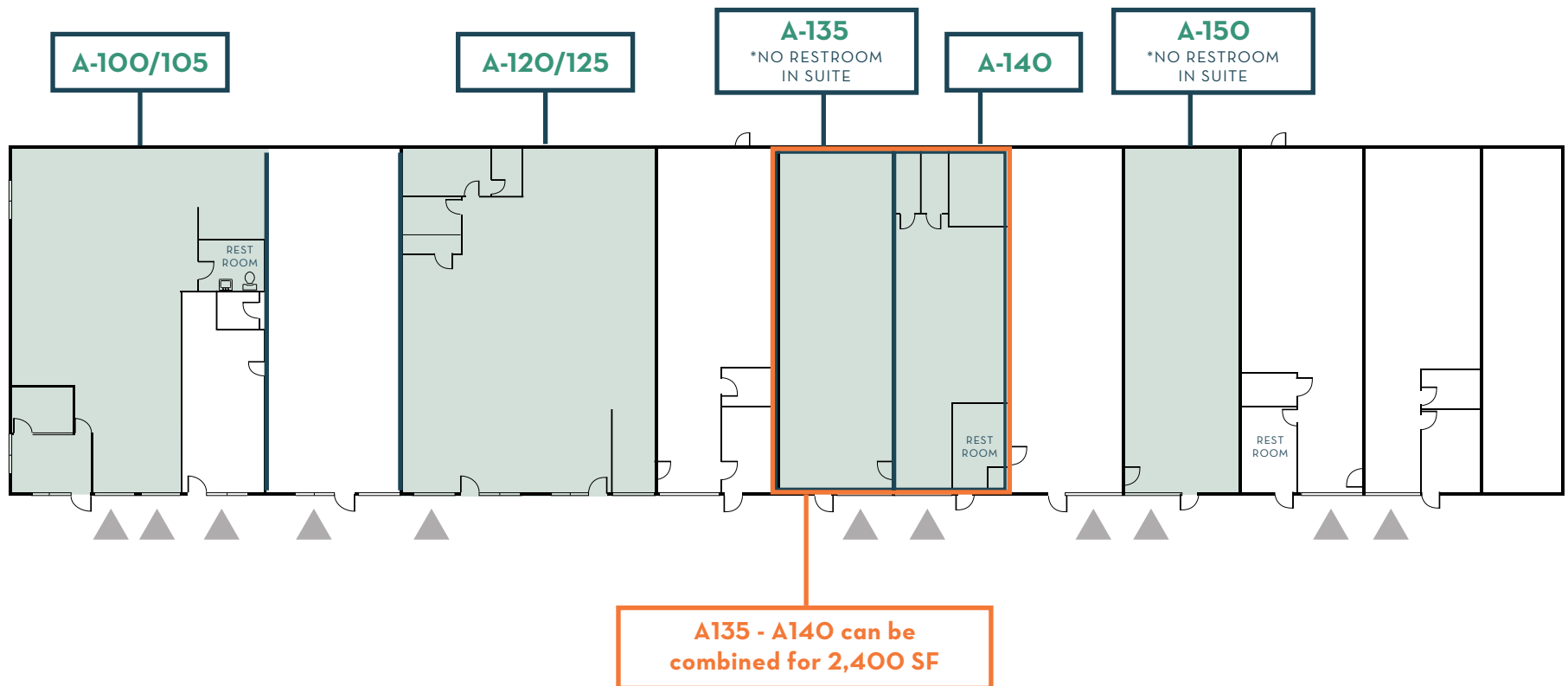


Next door to
Marymoor
Park

SAMMAMISH BUSINESS PARK

17825 NE 65TH STREET | REDMOND, WA

BUILDING A AVAILABILITIES



▲ GRADE LEVEL LOADING

TYLER SLONE | 425.274.4281
slone@broderickgroup.com

ERIC MEUSSNER | 425.274.4282
meussner@broderickgroup.com

PAUL JERUE | 425.646.5223
jerue@broderickgroup.com

MICK LARSEN | 425.274.4291
larsen@broderickgroup.com

BRODERICK
GROUP

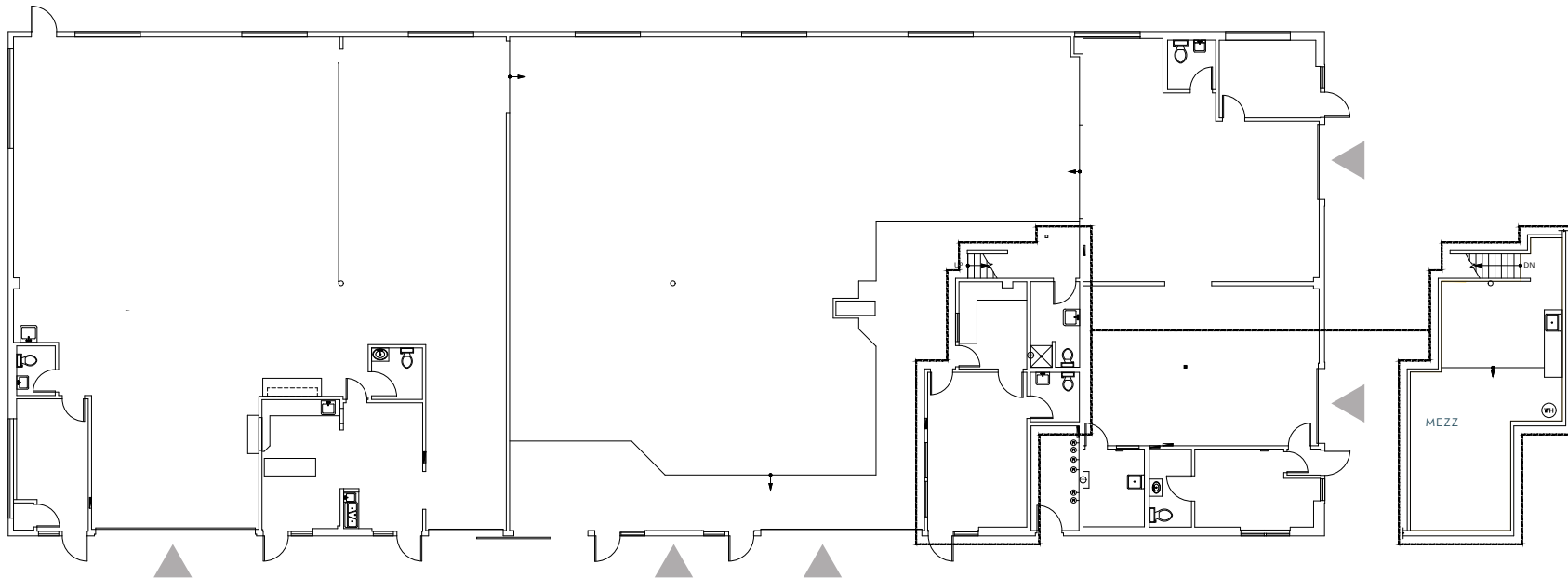
SAMMAMISH

BUSINESS PARK

17825 NE 65TH STREET | REDMOND, WA

BUILDING B AVAILABILITIES

9,479 SF | AVAILABLE NOW
DEMISING OPTIONS AVAILABLE



▲ GRADE LEVEL LOADING

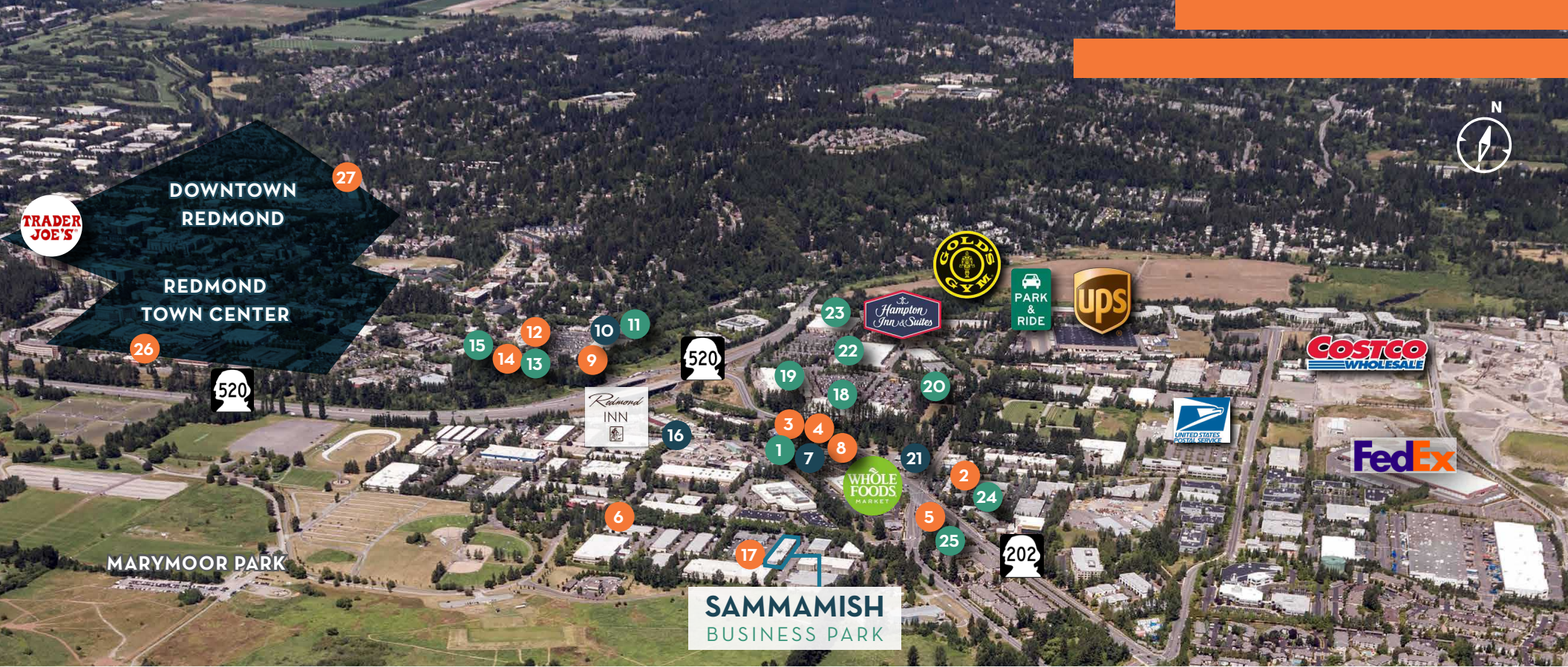
TYLER SLONE | 425.274.4281
slone@broderickgroup.com

ERIC MEUSSNER | 425.274.4282
meussner@broderickgroup.com

PAUL JERUE | 425.646.5223
jerue@broderickgroup.com

MICK LARSEN | 425.274.4291
larsen@broderickgroup.com

BRODERICK
• GROUP •



NEARBY AMENITIES

- COFFEE
- SERVICE
- FOOD OPTION

- | | | | |
|---|---|--|---|
| <ul style="list-style-type: none"> 1. Sammamish Cleaners 2. Pomegranate Bistro 3. Jimmy John's 4. Chipotle 5. Subway 6. Postdoc Brewing 7. Peet's Coffee & Tea | <ul style="list-style-type: none"> 8. Asiana Bistro 9. Panera Bread 10. Starbucks 11. Rite-Aid 12. Agave Cocina 13. Baskin Robbins 14. Fatburger | <ul style="list-style-type: none"> 15. Bank of America 16. Blazin Bagels 17. Mac & Jack's Brewery 18. Home Depot 19. Fred Meyer 20. Discount Tire 21. Mercurys Coffee Co. | <ul style="list-style-type: none"> 22. Target 23. Kohl's 24. ZenRock Fitness 25. Redmond Kindercare 26. BJ's Restaurant & Brewhouse 27. Typhoon |
|---|---|--|---|

TYLER SLONE | 425.274.4281
slone@broderickgroup.com

ERIC MEUSSNER | 425.274.4282
meussner@broderickgroup.com

PAUL JERUE | 425.646.5223
jerue@broderickgroup.com

MICK LARSEN | 425.274.4291
larsen@broderickgroup.com

