



**ONE SPACE REMAINS!**

**FOR LEASE**

5680 24th Avenue NW  
Seattle, WA 98107



**NOMA BUILDING | RETAIL**

First Western Properties, Inc. | 425.822.5522 | fwp-inc.com  
11621 97th Lane NE, Kirkland, Washington 98034

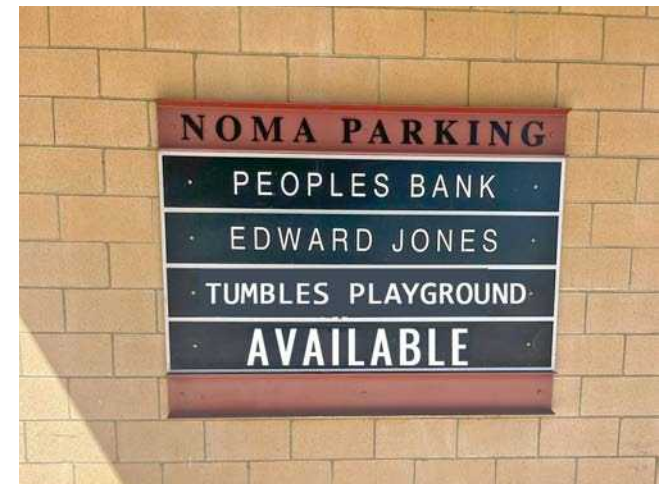
**NOMA BUILDING** is a 91 unit condominium building over commercial retail space located in the Ballard neighborhood of Seattle known for its blend of contemporary urban offerings with the tranquility of residential living. Distinguished by its historical charm, Scandinavian influences, and vibrant commercial scene, Ballard stands as a cherished and unique facet of the greater Seattle region. Its commitment to preserving historic buildings, hosting cultural events, and fostering community engagement significantly contributes to its economic vitality and appeals to both residents and tourists. The site is strategically located near the “Locks” and Nordic Museum bringing more than 300,000 tourists to the neighborhood annually; Old Town Ballard - a city wide draw, & Swedish Hospital Ballard.



ENTRANCE FROM NW 57<sup>TH</sup> STREET



ENTRANCE FROM 24<sup>TH</sup> AVE NW



**5680 24TH AVE NW:**

**6,004 SF      CALL FOR RATES**

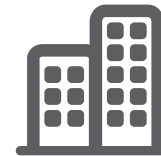
- NNN: \$7.92 PSF (est. 2026)
- Parking: 6 Dedicated Stalls + 1 Handicap Stalls, Monthly Rate is Negotiable
- Welcoming Tumbles Playground
- Neighbors: QFC, Edward Jones, People’s Bank



Population



Average HH Income

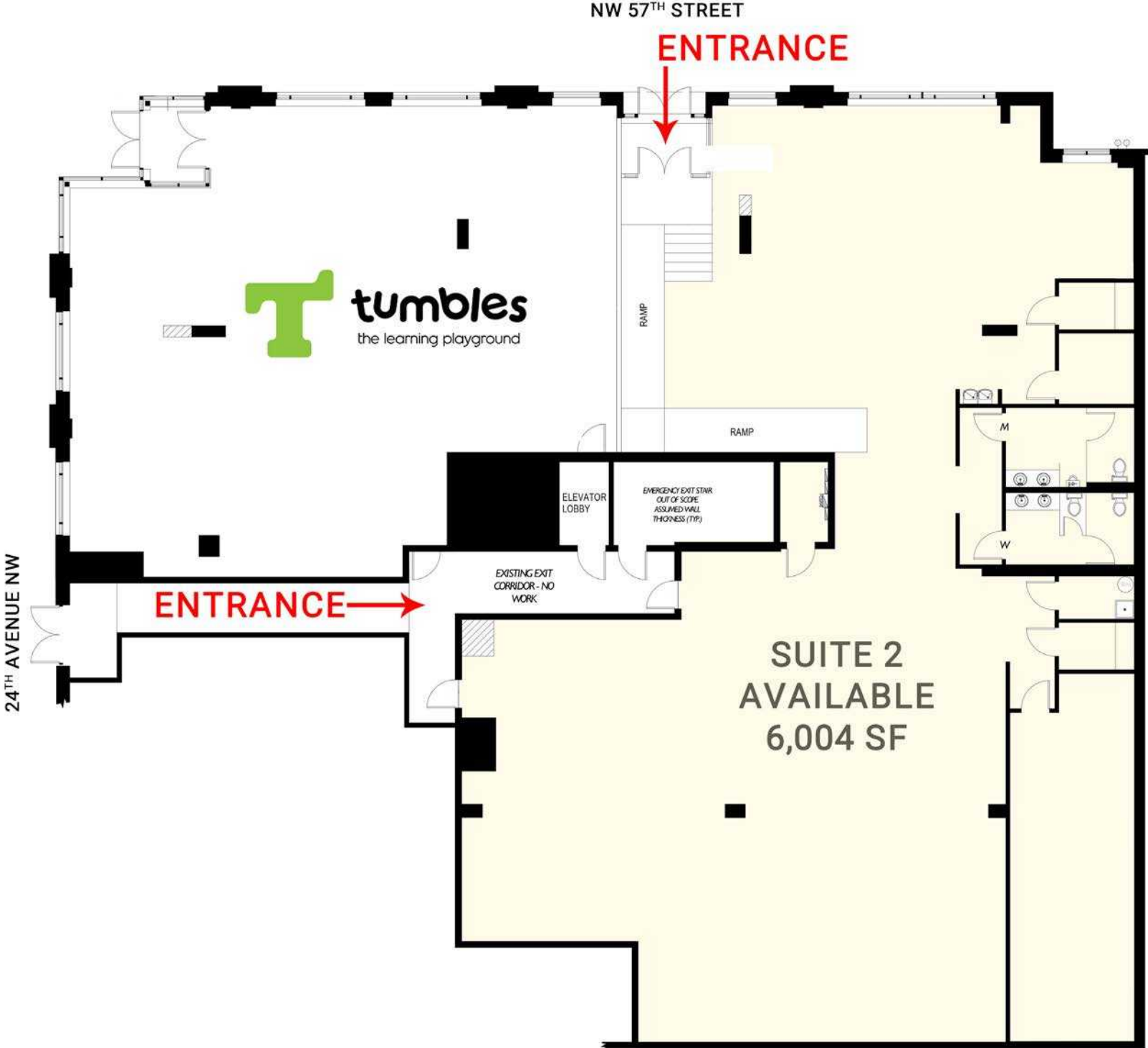


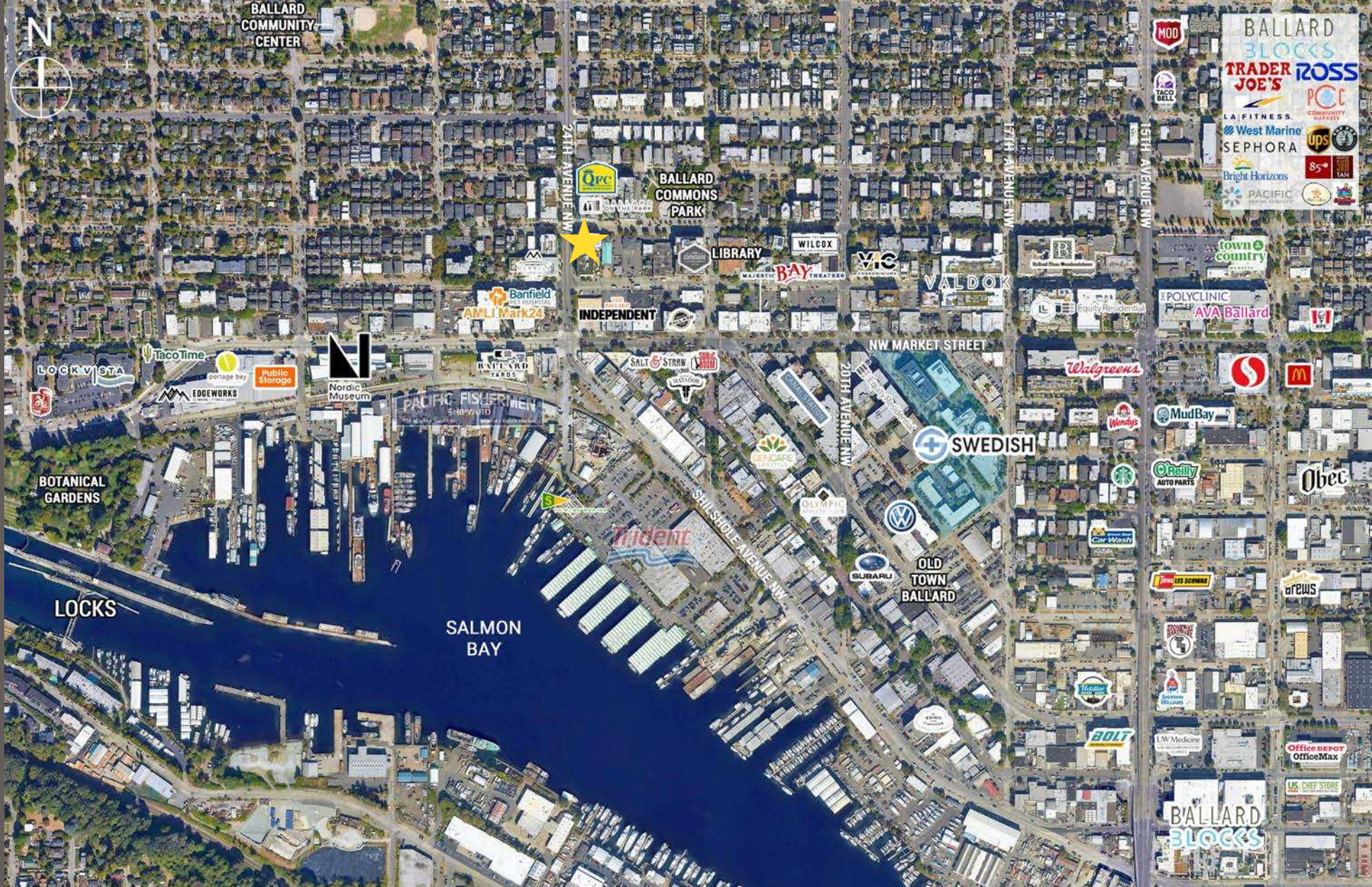
Daytime Population

Regis - 2026

	Population	Average HH Income	Daytime Population
Mile 1	35,381	\$203,527	20,096
Mile 3	184,813	\$222,795	72,065
Mile 5	457,115	\$192,848	253,895

# DEMISING PLAN





Moments  
from QFC



Minutes from  
Swedish Ballard



10,367 ADT  
At Intersection



Just North of  
Ballard Old Town

KIRKLAND | TACOMA | PORTLAND | SEATTLE



**RELATIONSHIP FOCUSED. RESULTS DRIVEN.**

**BRENNAN MCCLURG**

425.822.5522  
bmccclurg@fwp-inc.com

**STEVE ERICKSON**

425.822.5522  
serickson@fwp-inc.com

**JAKE THURBER**

425.250.3277  
jthurber@fwp-inc.com



First Western Properties, Inc. | 425.822.5522  
11621 97th Lane NE Kirkland, WA 98034 | fwp-inc.com

© First Western Properties, Inc. DISCLAIMER: The above information has been secured from sources believed to be reliable, however, no representations are made to its accuracy. Prospective tenants or buyers should consult their professional advisors and conduct their own independent investigation. Properties are subject to change in price and/or availability without notice.