

FOR LEASE

STADIUM RETAIL

Second Gen Restaurant & Bar

12 N TACOMA AVE, TACOMA, WA 98402



KIDDER.COM

km Kidder
Mathews

*Second Gen Restaurant & Bar
Including Full Kitchen, Full Bar,
Speakeasy and Restaurant Layout*

Suite 12: 3,192 SF Second gen restaurant & bar

Suite 8: 1,296 SF first floor, 769 SF second floor

Suites can be combined

\$28.00 PSF, NNN

11,721 CPD on N 1st St & N Tacoma Ave

Zoned NCX - Neighborhood Commercial
Mixed-Use District

Allowable Uses include restaurant, office, retail,
professional services, medical office

Close to 300+ new apartments

Next to beautiful Wright Park

Parking available



FLOOR PLAN

1,296 SF

*SUITE 8 FIRST FLOOR

769 SF

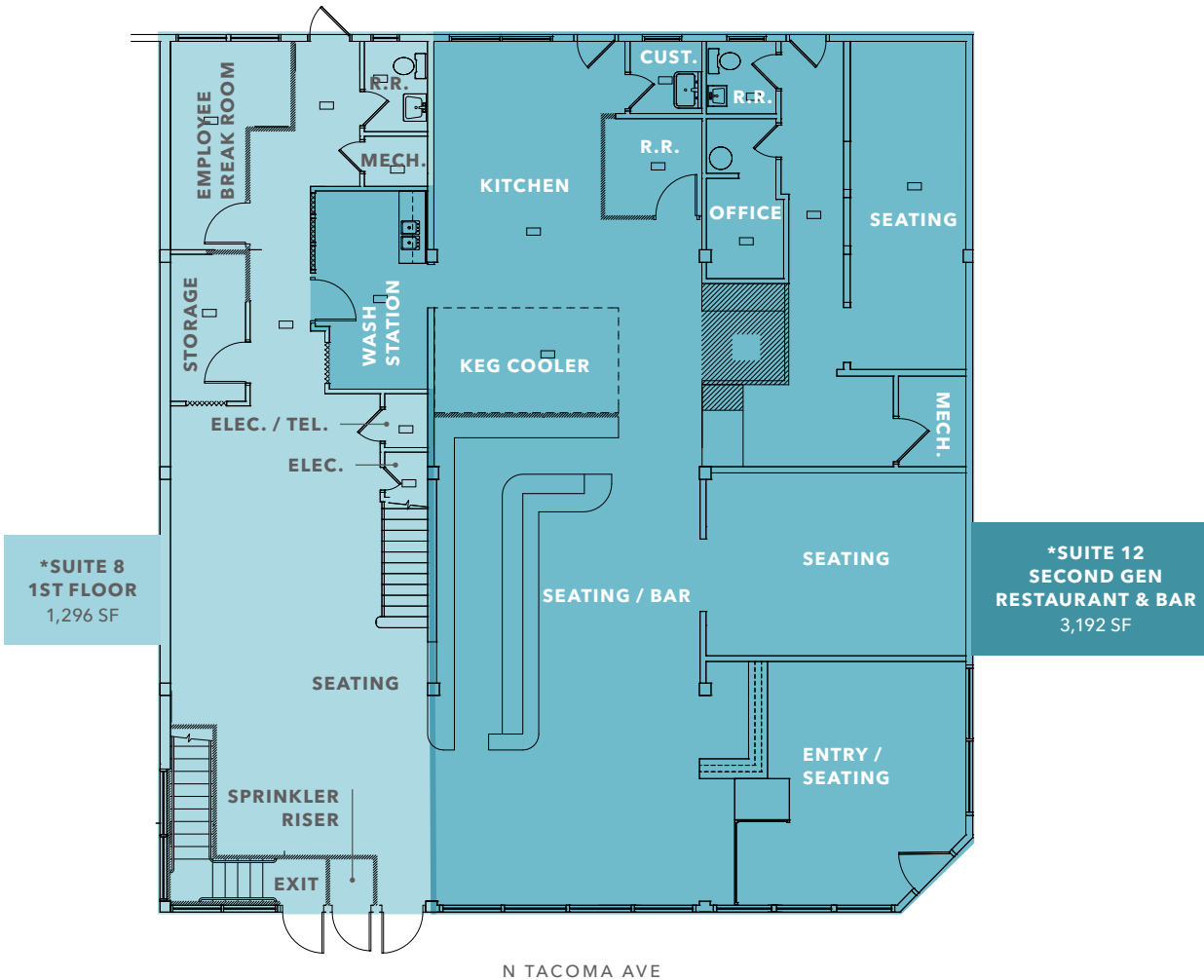
*SUITE 8 SECOND FLOOR

3,192 SF

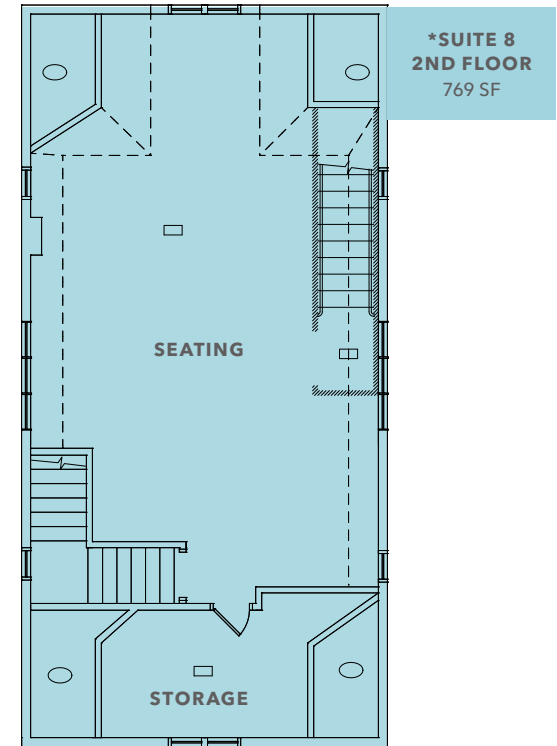
*SUITE 12

\$28.00

LEASE RATE (SF/YR), NNN



UPSTAIRS



*Suites can be combined

DEMOGRAPHICS

POPULATION

	1 Mile	3 Miles	5 Miles
2024 TOTAL	25,797	93,158	245,592
2029 PROJECTION	28,280	97,873	250,742
2020 CENSUS	16,395	75,611	213,861
PROJECTED GROWTH 2024 - 2029	1.9%	1.0%	0.4%

MEDIAN AGE & GENDER

	1 Mile	3 Miles	5 Miles
MEDIAN AGE	37.4	37.3	37.5
% FEMALE	46.4%	47.5%	49.4%
% MALE	53.6%	52.5%	50.6%

HOUSEHOLDS

	1 Mile	3 Miles	5 Miles
2024 TOTAL	10,765	38,552	99,005
2029 PROJECTED	11,908	40,911	101,732
2020 CENSUS	9,106	35,165	94,320
GROWTH 2023 - 2028	2.1%	1.2%	0.6%
OWNER-OCCUPIED	21.3%	46.8%	52.9%
RENTER-OCCUPIED	76.9%	53.2%	47.1%

INCOME

	1 Mile	3 Miles	5 Miles
2024 AVERAGE HH INCOME	\$96,099	\$118,759	\$121,232
2029 PROJECTED HH INCOME	\$97,099	\$121,764	\$128,833
ANNUAL CHANGE 2023 - 2028	0.2%	0.5%	0.8%

EMPLOYMENT

	1 Mile	3 Miles	5 Miles
TOTAL BUSINESSES	1,821	5,789	11,614
TOTAL EMPLOYEES	19,398	55,664	96,945
WHITE COLLAR WORKERS	9,021	33,480	80,500
BLUE COLLAR WORKERS	3,185	14,909	46,161

EDUCATION

	1 Mile	3 Miles	5 Miles
SOME HIGH SCHOOL	5.3%	4.4%	4.9%
HIGH SCHOOL DIPLOMA	22.4%	22.1%	24.4%
SOME COLLEGE	19.9%	20.1%	21.1%
ASSOCIATE	7.8%	9.0%	9.9%
BACHELOR'S	17.5%	17.6%	14.6%
GRADUATE	17.5%	17.6%	14.6%

Data Source: ©2023, Sites USA

KIDDER.COM

This information supplied herein is from sources we deem reliable. It is provided without any representation, warranty, or guarantee, expressed or implied as to its accuracy. Prospective Buyer or Tenant should conduct an independent investigation and verification of all matters deemed to be material, including, but not limited to, statements of income and expenses. Consult your attorney, accountant, or other professional advisor. All Kidder Mathews designs are the sole property of Kidder Mathews. Branded materials and layouts are not authorized for use by any other firm or person.





BLAKE WEBER
206.898.1231
blake.weber@kidder.com

NED WHALEN
206.491.5998
ned.whalen@kidder.com

TIM WEBER
206.650.0391
tim.weber@kidder.com

KIDDER.COM

This information supplied herein is from sources we deem reliable. It is provided without any representation, warranty, or guarantee, expressed or implied as to its accuracy. Prospective Buyer or Tenant should conduct an independent investigation and verification of all matters deemed to be material, including, but not limited to, statements of income and expenses. Consult your attorney, accountant, or other professional advisor. All Kidder Mathews designs are the sole property of Kidder Mathews. Branded materials and layouts are not authorized for use by any other firm or person.

