



# RIVER QUARRY

408 E PARKCENTER BLVD | BOISE, IDAHO

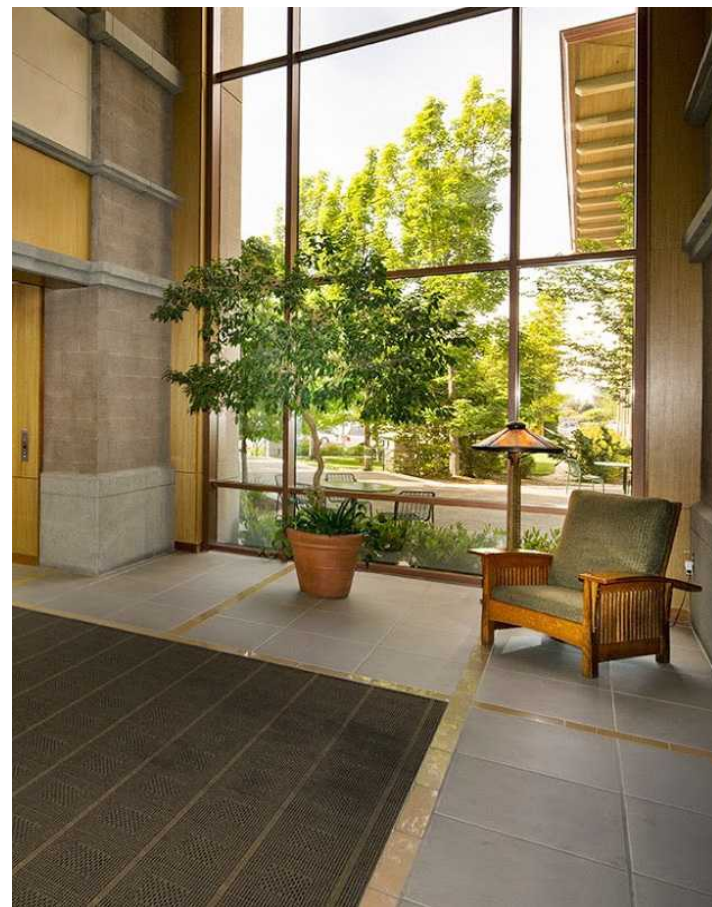
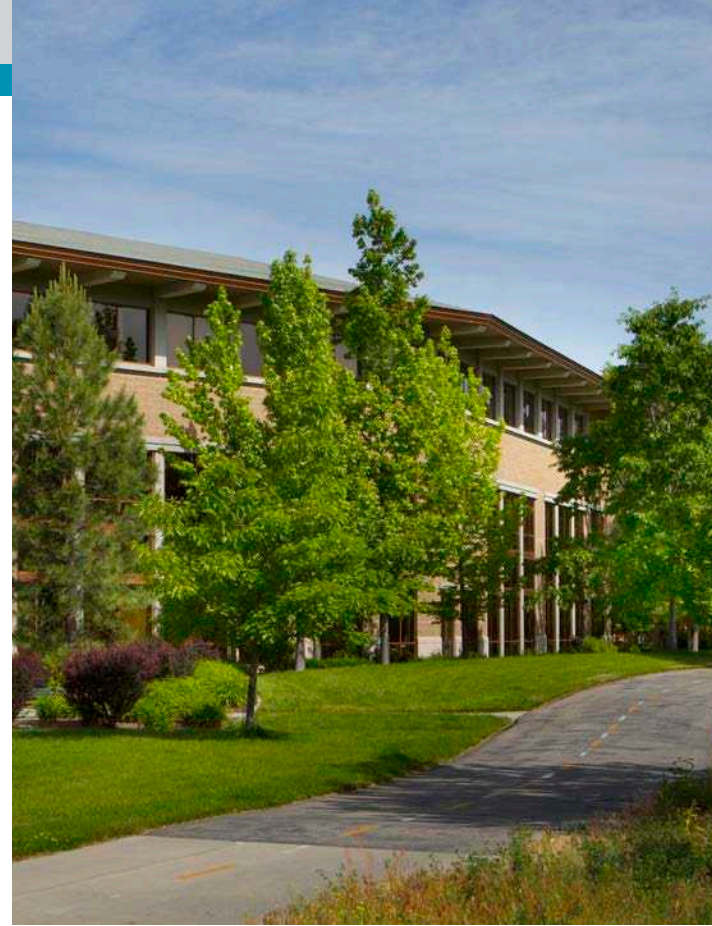
25,218 RSF FOR SUBLEASE



 CUSHMAN & WAKEFIELD

## Property Highlights

<b>Sublease Rate</b>	\$24.00
<b>Sublease Type</b>	FSEJ
<b>Sublease Term</b>	7/31/29
<b>Available Space</b>	16,932 RSF - 2nd Floor
<b>Furnished</b>	Furniture Shown Included
<b>Building Size</b>	65,742 SF
<b>Lot Size</b>	3.76 Acres
<b>Parking</b>	On-Site Parking - Open/Shared
<b>Zoning</b>	City of Boise - L-OD
<b>Parcel</b>	#R6907070023
<b>Lockbox</b>	No Lockbox - Contact Agents



## Listing Features

- Available space includes furniture shown, private offices, conference room, breakroom, and common area entry, restrooms and shared on-site parking for clients and staff
- Part of a nicely developed professional office park with quality landscaping and design, ideal location for a tenant looking to service Boise and it's surrounding areas
  - [Google 360 View](#)
- Near downtown Boise, SUPERVALU/Albertson's Corporate Office, BSU, numerous banks, restaurants including Red Robin and Barbacoa, DoubleTree and many other amenities
- Tenants can relax and enjoy the Loggers Pond & Boise Greenbelt on lunch hours, accessible by bike & Valley Regional Transit public bus system

## Floor Plan

### 2nd Floor - 16,932 SF



**Jennifer McEntee**

Senior Director  
Office | Capital Markets  
+1 208 287 9495  
jennifer.mcentee@cushwake.com

**Bree Wells**

Director  
Office | Capital Markets  
+1 208 287 9492  
bree.wells@cushwake.com

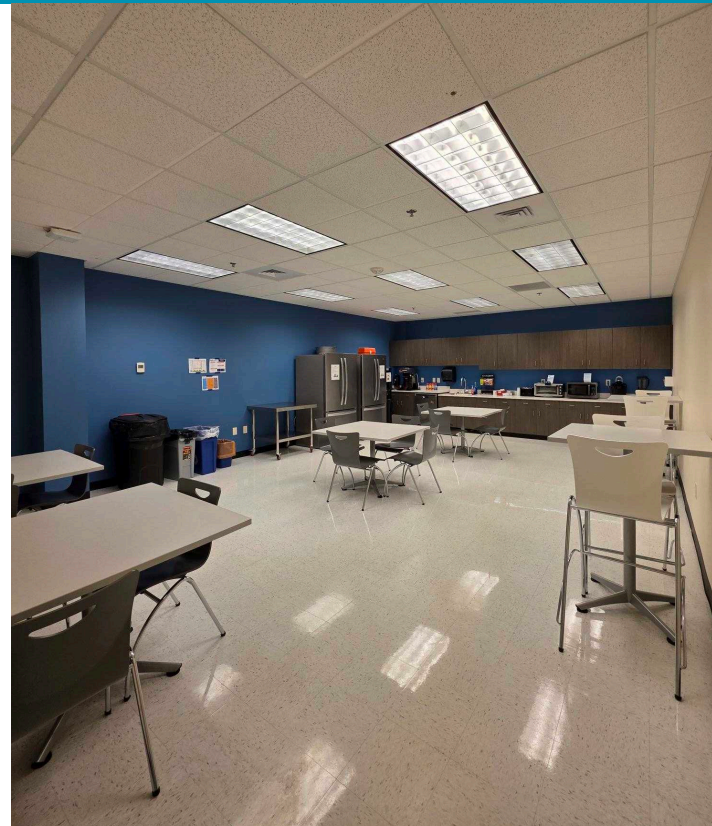
**Braydon Torres**

Associate  
Office | Capital Markets  
+1 208 207 9485  
braydon.torres@cushwake.com



## Property Highlights

<b>Sublease Rate</b>	\$24.00
<b>Sublease Type</b>	FSEJ
<b>Sublease Term</b>	7/31/29
<b>Available Space</b>	8,286 RSF - 3rd Floor
<b>Furnished</b>	Furniture Shown Included
<b>Building Size</b>	65,742 SF
<b>Lot Size</b>	3.76 Acres
<b>Parking</b>	On-Site Parking - Open/Shared
<b>Zoning</b>	City of Boise - L-OD
<b>Parcel</b>	#R6907070023
<b>Lockbox</b>	No Lockbox - Contact Agents

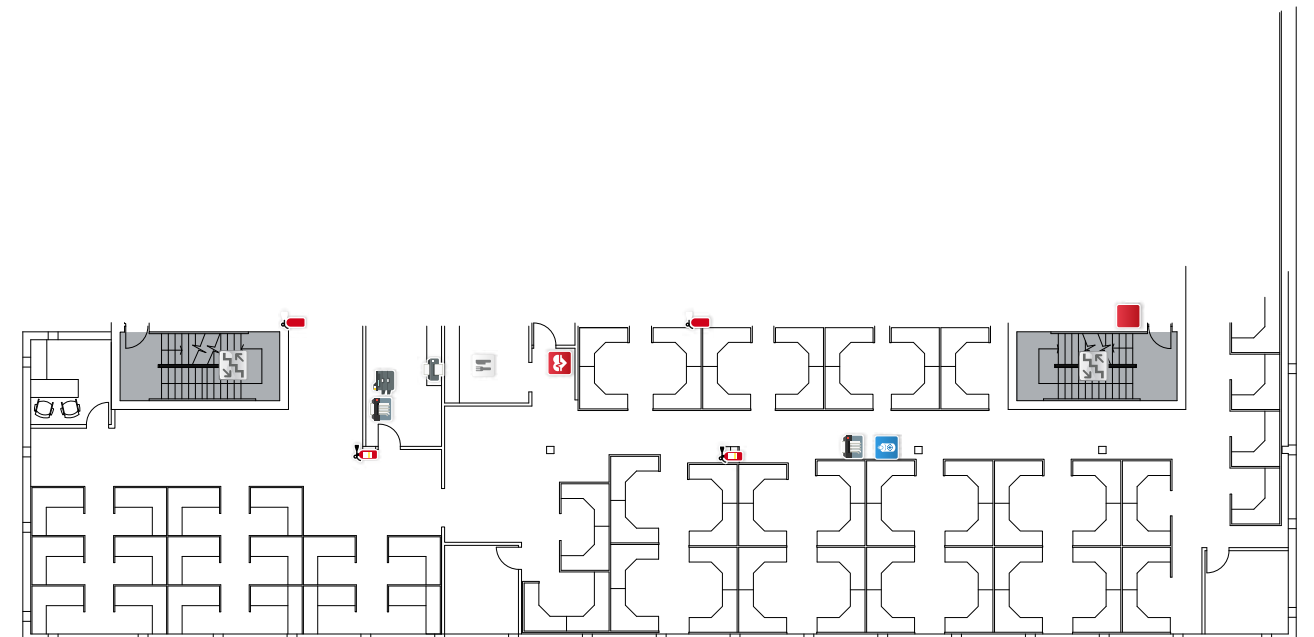


## Listing Features

- Available space includes furniture shown, private offices, conference room, breakroom, and common area entry, restrooms and shared on-site parking for clients and staff
- Part of a nicely developed professional office park with quality landscaping and design, ideal location for a tenant looking to service Boise and it's surrounding areas
  - [Google 360 View](#)
- Near downtown Boise, SUPERVALU/Albertson's Corporate Office, BSU, numerous banks, restaurants including Red Robin and Barbacoa, DoubleTree and many other amenities
- Tenants can relax and enjoy the Loggers Pond & Boise Greenbelt on lunch hours, accessible by bike & Valley Regional Transit public bus system

## Floor Plan

3rd Floor - 8,286 RSF



### Jennifer McEntee

Senior Director  
Office | Capital Markets  
+1 208 287 9495  
jennifer.mcentee@cushwake.com

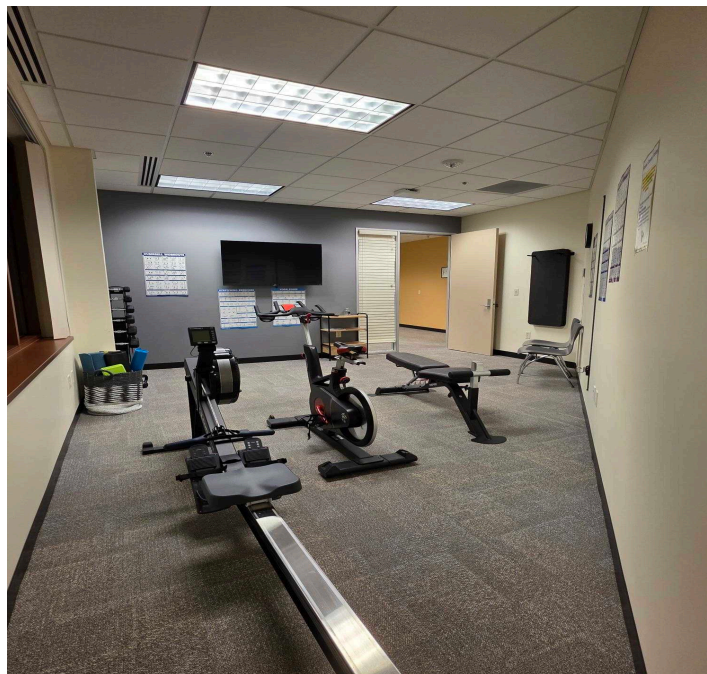
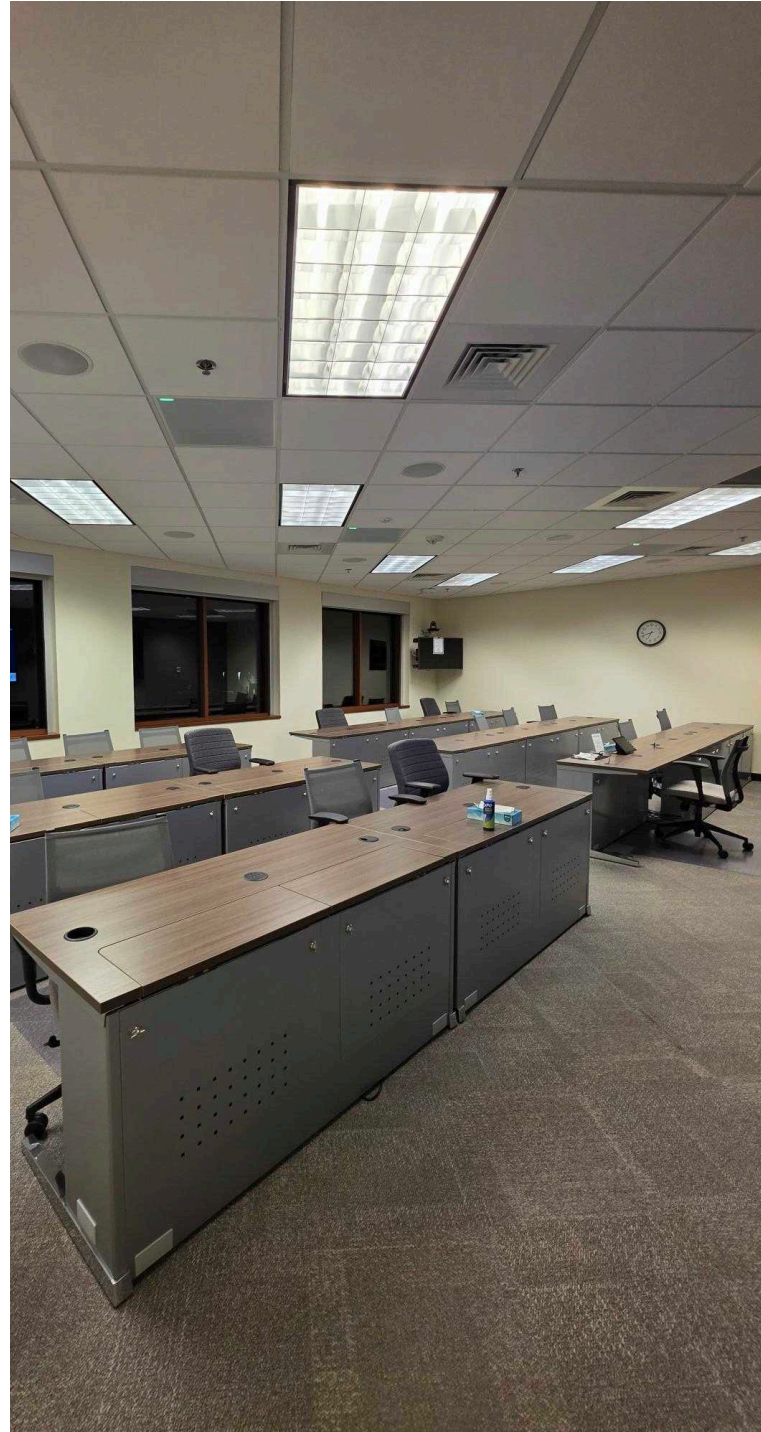
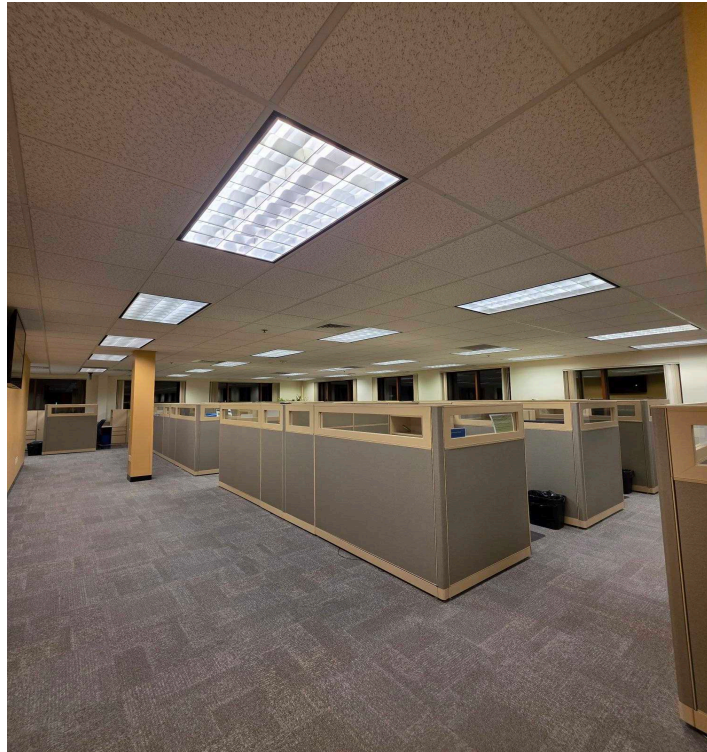
### Bree Wells

Director  
Office | Capital Markets  
+1 208 287 9492  
bree.wells@cushwake.com

### Braydon Torres

Associate  
Office | Capital Markets  
+1 208 207 9485  
braydon.torres@cushwake.com

## Property Images

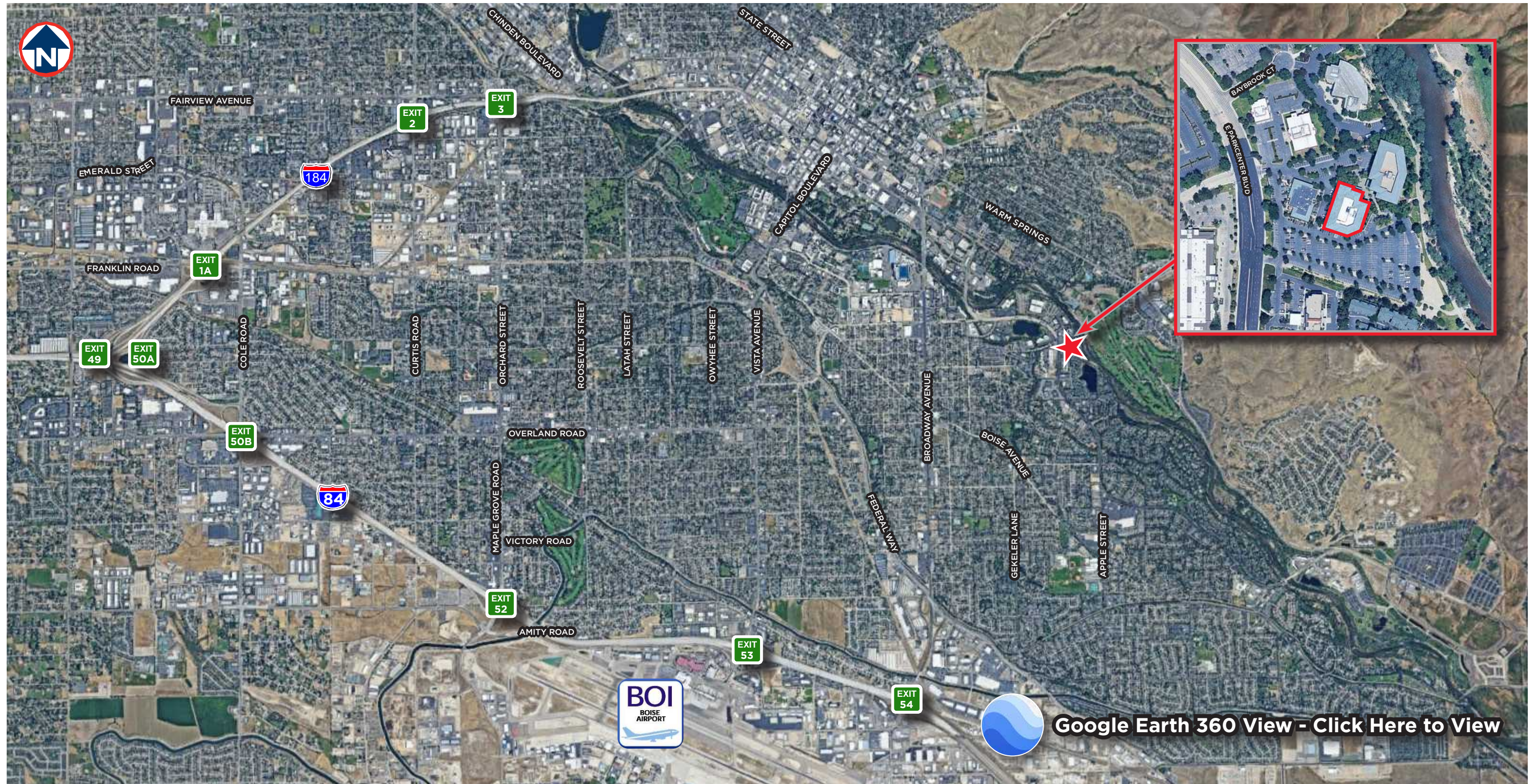


**Jennifer McEntee**  
Senior Director  
Office | Capital Markets  
+1 208 287 9495  
jennifer.mcentee@cushwake.com

**Bree Wells**  
Director  
Office | Capital Markets  
+1 208 287 9492  
bree.wells@cushwake.com

**Braydon Torres**  
Associate  
Office | Capital Markets  
+1 208 207 9485  
braydon.torres@cushwake.com

# Property Location



**Jennifer McEntee**  
Senior Director  
Office | Capital Markets  
+1 208 287 9495  
jennifer.mcentee@cushwake.com

**Bree Wells**  
Director  
Office | Capital Markets  
+1 208 287 9492  
bree.wells@cushwake.com

**Braydon Torres**  
Associate  
Office | Capital Markets  
+1 208 207 9485  
braydon.torres@cushwake.com

# RIVER QUARRY

408 E PARKCENTER BLVD | BOISE, IDAHO

8,286 RSF FOR SUBLEASE

## CONTACT

### Jennifer McEntee

Senior Director  
Office | Capital Markets  
+1 208 287 9495  
[jennifer.mcentee@cushwake.com](mailto:jennifer.mcentee@cushwake.com)

### Bree Wells

Director  
Office | Capital Markets  
+1 208 287 9492  
[bree.wells@cushwake.com](mailto:bree.wells@cushwake.com)

### Braydon Torres

Associate  
Office | Capital Markets  
+1 208 207 9485  
[braydon.torres@cushwake.com](mailto:braydon.torres@cushwake.com)

999 W Main Street, Suite 1300  
Boise, ID 83702

[cushmanwakefield.com](http://cushmanwakefield.com)

