

# HILL INDUSTRIAL - 190A

FOR LEASE: 36,000 TO 60,000 SF

8809 S 190TH ST, UNIT 2 | KENT, WA 98031

36,000 TO 60,000 SF SPACE AVAILABLE WITH FREEZER/COOLER

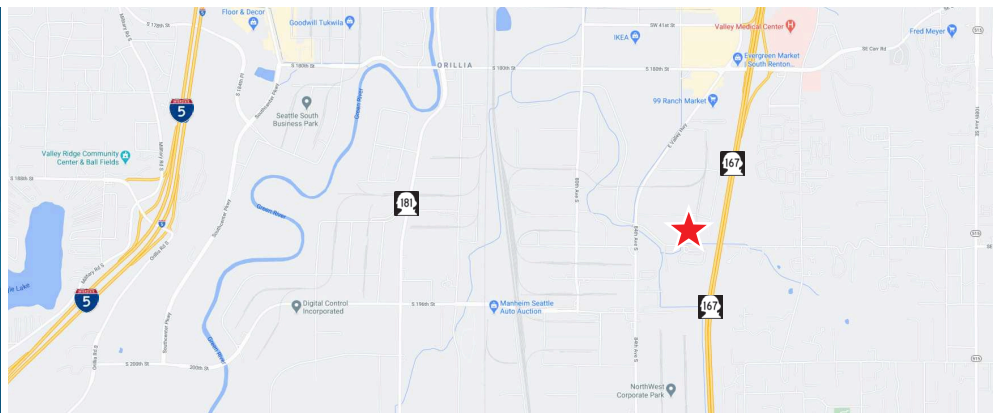


## LEASE INFORMATION

Unit	Available Size	Office Size	Loading Doors	Clear Height	Lease Rate	NNN Rate	Available Date
2	36K-60K SF	3,200 SF	1 GL; 15 DH; 3 Rail	24'	Call Broker	\$0.32/SF	9/1/2026

## PROPERTY FEATURES

- Approximately 6,000 SF cooler space and 2,100 SF freezer space
- North Kent location
- Convenient access to I-5, I-405, and Hwy-167



**JOE SCALZO**  
206.719.7104  
jscalzo@neilwalter.com

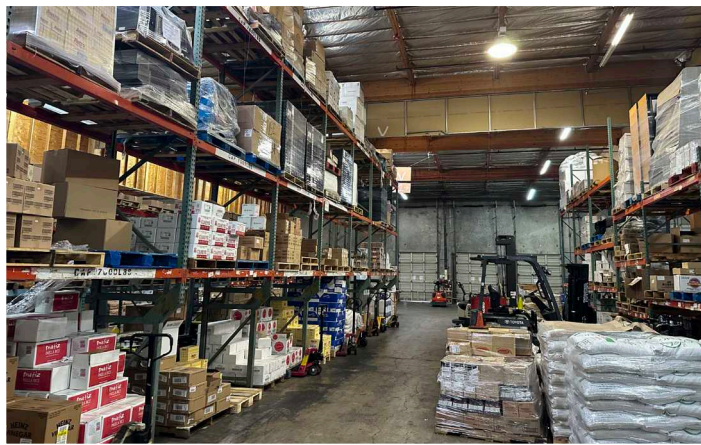
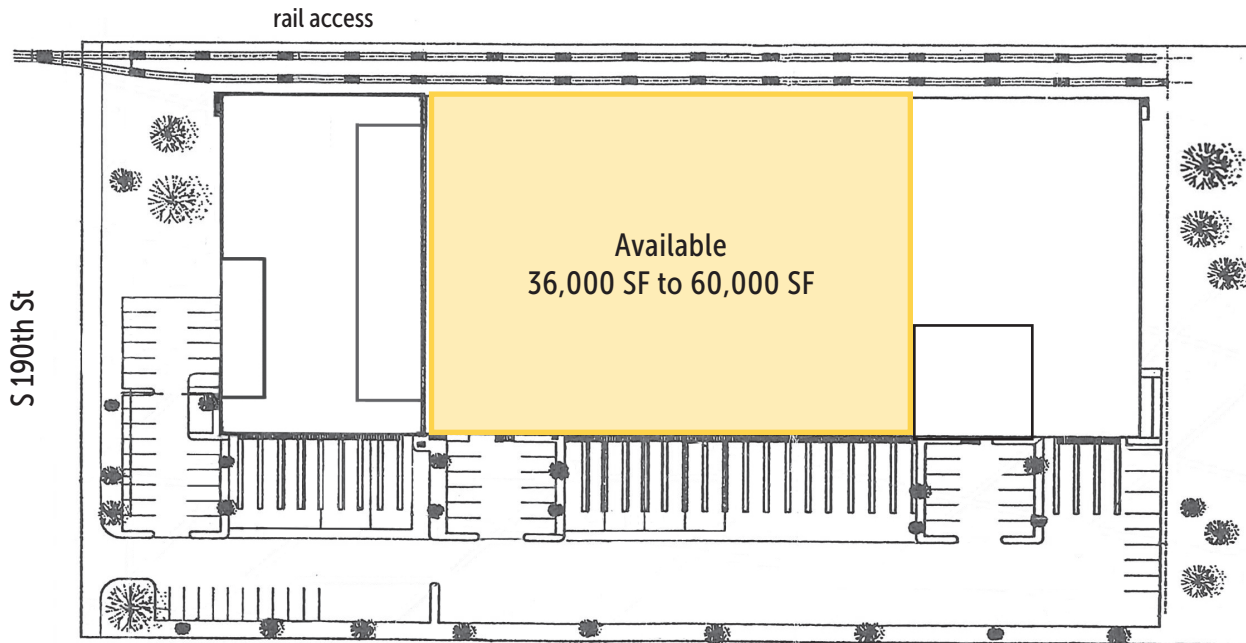
All information references in this document are approximate. The information contained herein is contained from sources deemed reliable. It is provided without representation, warranty, or guarantee, expressed or implied as to accuracy. Prospective buyer or tenant should conduct its own independent investigation relating to the property, government codes and regulations, allowed uses, and all other matters, regardless of whether they are referred to or contained in this document.

# HILL INDUSTRIAL - 190A

8809 S 190TH ST, UNIT 2 | KENT, WA 98031



Unit	Available Size	Office Size	Loading Doors	Clear Height	Lease Rate	NNN Rate	Available Date
2	36K-60K SF	3,200 SF	1 GL; 15 DH; 3 Rail	24'	Call Broker	\$0.32/SF	9/1/2026



**JOE SCALZO**  
206.719.7104

[jscalzo@neilwalter.com](mailto:jscalzo@neilwalter.com)

550 S Michigan St  
Seattle, WA 98108  
206.787.1800

[www.neilwalter.com](http://www.neilwalter.com)

All information references in this document are approximate. The information contained herein is contained from sources deemed reliable. It is provided without representation, warranty, or guarantee, expressed or implied as to accuracy. Prospective buyer or tenant should conduct its own independent investigation relating to the property, government codes and regulations, allowed uses, and all other matters, regardless of whether they are referred to or contained in this document.