



# 1615 PUYALLUP

**For Sale or Lease**

**1615 Puyallup St, Sumner, WA**

**NEWMARK**

- Price: \$12,950,000
- 72,450 SF Building
- ~75,000 SF Fully Secured Excess Yard
- Call Brokers for Rates



# PROPERTY DETAILS

---



**72,450 RSF**  
Building Area



**4,392 RSF**  
Office Space



**75,000 SF**  
Excess Yard Area



**5.28 Acres**  
Total Land Area  
(229,228 SF)

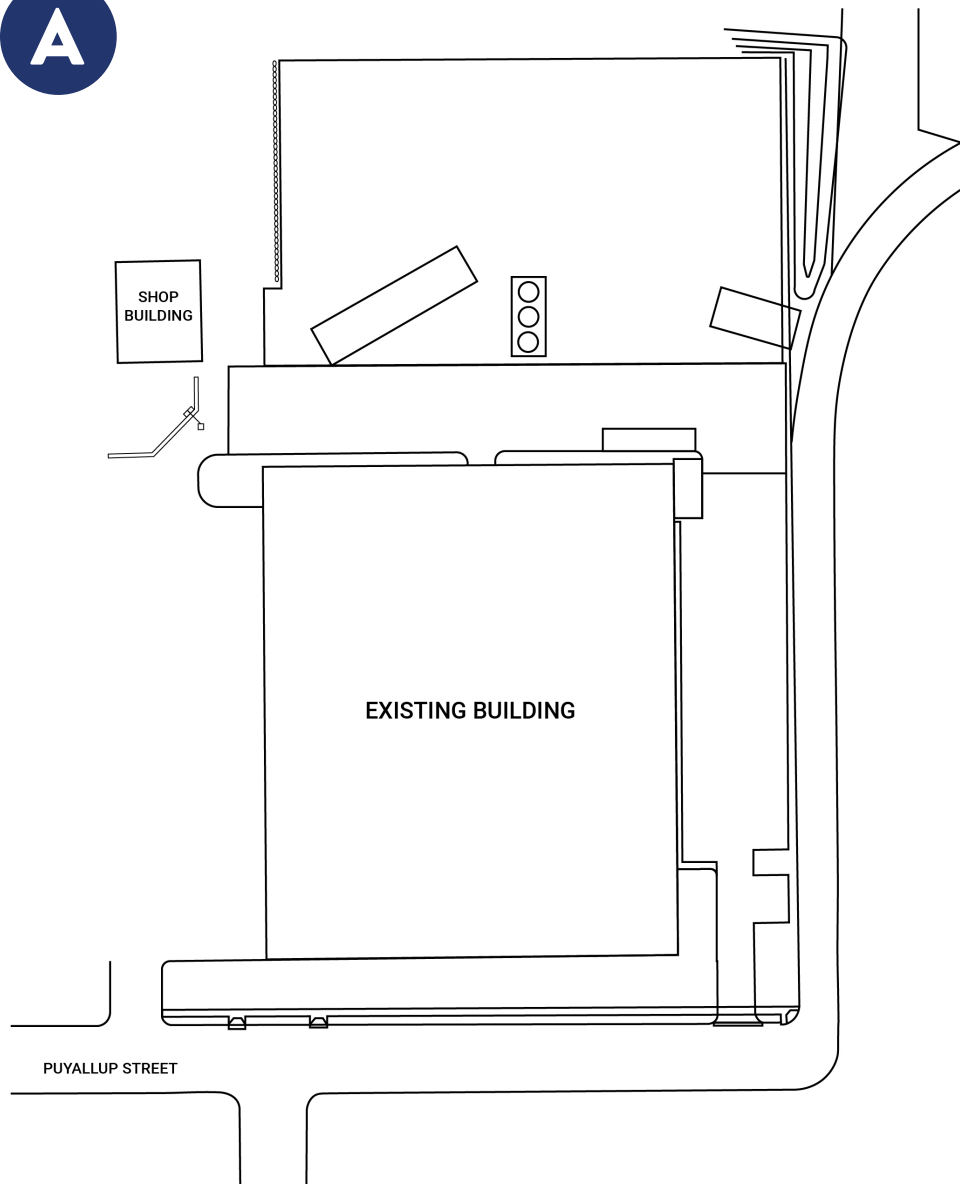


**8 DH | 2 GL**  
Loading

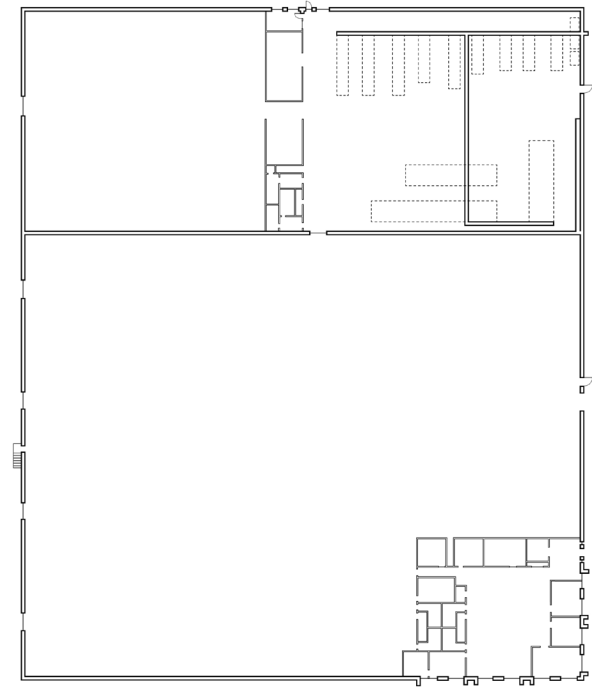


**22'**  
Clear Height

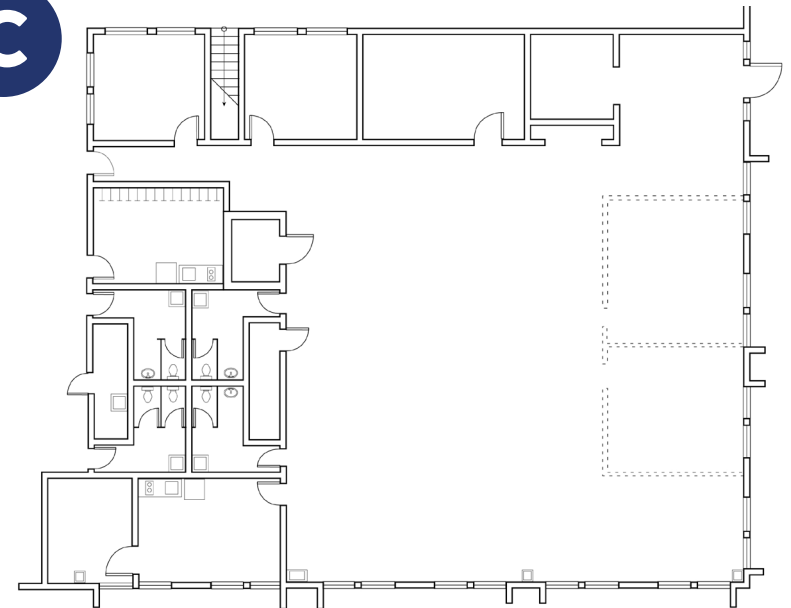
**A**



**B**

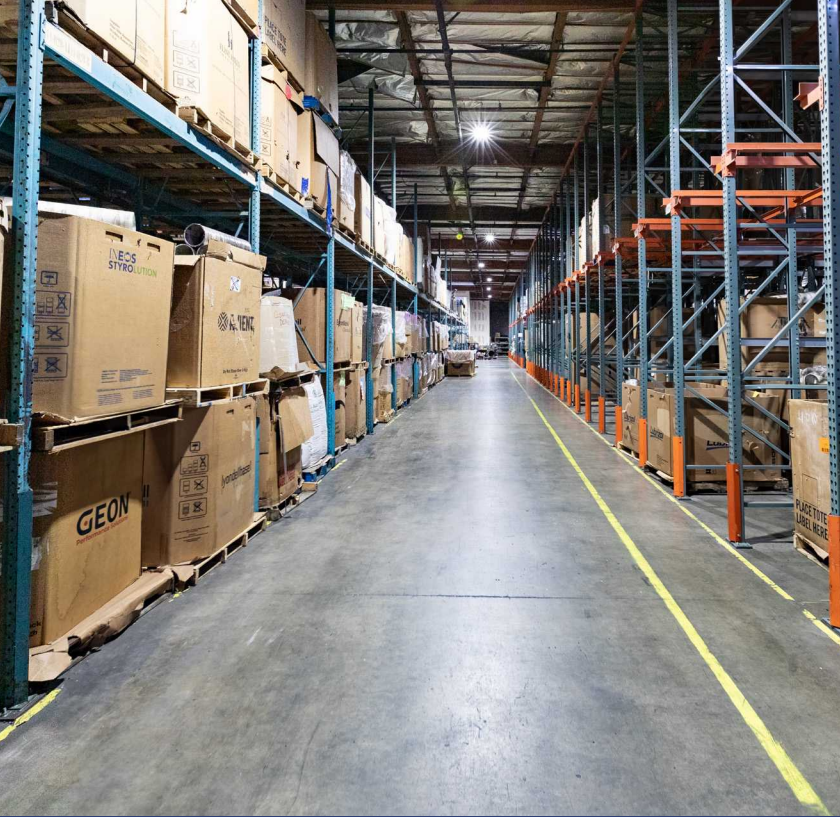


**C**



# SITE PLANS

A. Site Plan | B. Building Floor Plan | C. Office Floor Plan





Port of Tacoma

1615 Puyallup St  
Sumner, WA

# LOCATION

Centrally Located with excellent proximity to major ports.

10.3

MILES TO  
PORT OF TACOMA

23

MILES TO  
SEATAC INT'L AIRPORT

33

MILES TO  
PORT OF SEATTLE



# 1615 PUYALLUP

The information contained herein has been obtained from sources deemed reliable but has not been verified and no guarantee, warranty or representation, either express or implied, is made with respect to such information. Terms of sale or lease and availability are subject to change or withdrawal without notice. MP-752 | 04/24

**NEWMARK**

**THAD MALLORY, SIOR**

Executive Vice Chairman  
425.362.1410  
thad.mallory@nmrk.com

**CAM WARREN**

Managing Director  
425.362.1395  
cam.warren@nmrk.com