

FOR LEASE | 1813 137TH AVENUE EAST | SUMNER

137TH AVE E

132ND AVE E

THAD MALLORY, SIOR
Executive Vice Chairman
425-362-1410
thad.mallory@nmrk.com

MORGAN RICHEY, SIOR
Managing Director
425-362-1409
morgan.richey@nmrk.com

NEWMARK

Total Land Area	155,754 SF (3.58 AC)
Total Building RSF	16,751 SF
Loading	17 Grade Level Doors
Clear Height	14'-18' Peak
Available	May 2026

DETAILED SITE LAYOUT

137TH AVE E

ENTRANCE

ENTRANCE

ENTRANCE

SECONDARY OFFICE

Total Building SF 1,440 SF

SECONDARY SHOP

Total Building SF 2,700 SF

Loading 5 GL

Clear Height 12'-14'

PRIMARY OFFICE & SHOP

Total Building SF 12,611 SF

Office 2,770 SF Main
2,005 SF 2nd Story
4,775 SF Total Office

Loading 12 GL

AUXILIARY STORAGE

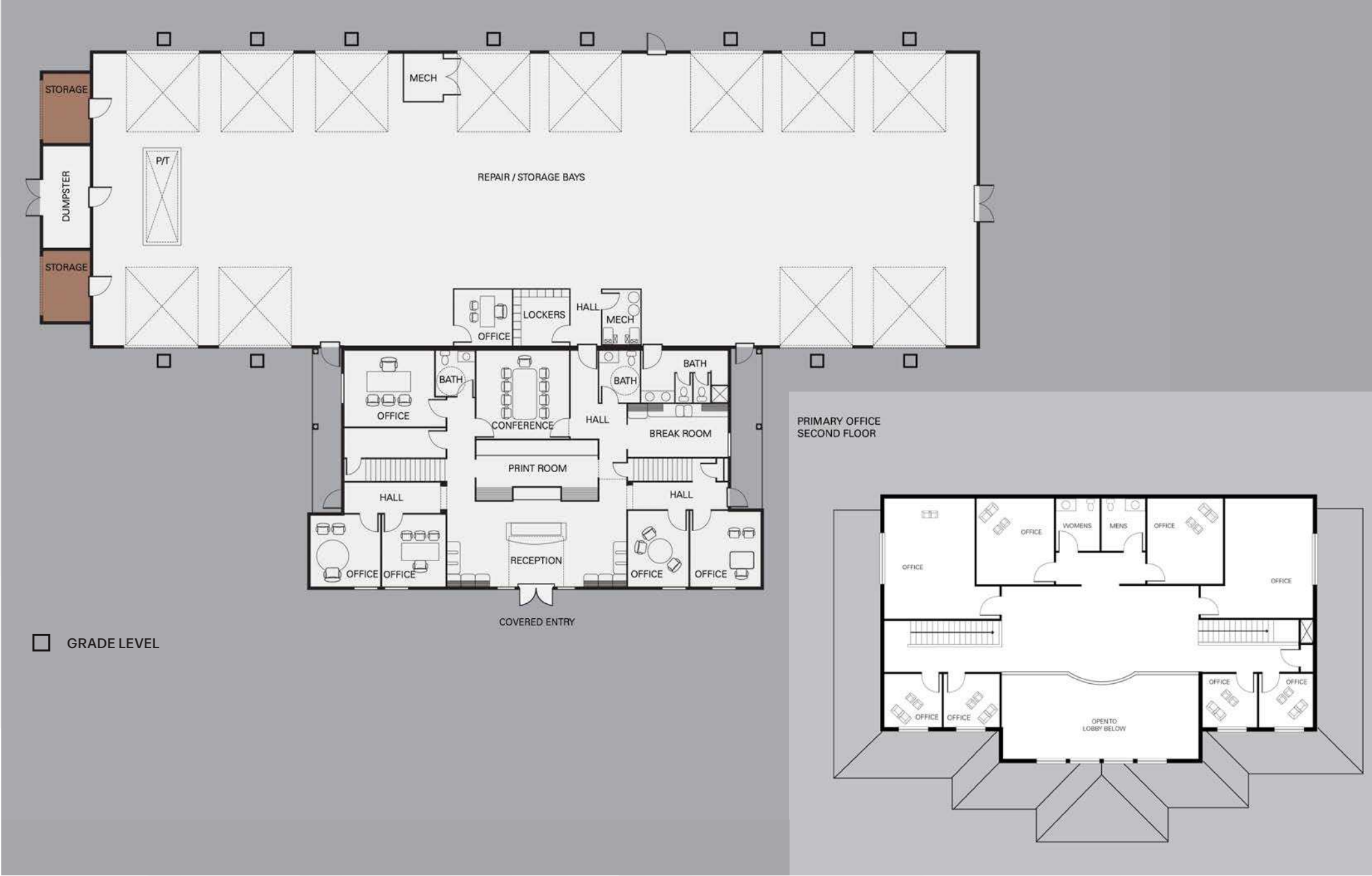
#1 Total Building SF 1,055 SF

#2 Total Building SF 480 SF

#3 Total Building SF 1,950 SF

* Square footage considered nonrentable area and not included in total building square footage or underwriting.

PRIMARY OFFICE & SHOP



REGIONAL AERIAL



Downtown
Seattle

Federal Way

Auburn

Pacific

Fife

Tacoma

Sumner

Drive Times

PORT OF TACOMA
10.5 Miles

EASY ACCESS
SR 167

FOR LEASE | 1813 137TH AVENUE EAST | SUMNER

THAD MALLORY, SIOR
Executive Vice Chairman
425-362-1410
thad.mallory@nrmk.com

MORGAN RICHEY, SIOR
Managing Director
425-362-1409
morgan.richey@nrmk.com

Corporate License #01355491

NEWMARK

The distributor of this communication is performing acts for which a real estate license is required. The information contained herein has been obtained from sources deemed reliable but has not been verified and no guarantee, warranty or representation, either express or implied, is made with respect to such information. Terms of sale or lease and availability are subject to change or withdrawal without notice.