

**\$0.65 PSF BLENDED!
FLEXIBLE TERM AND SQUARE FOOTAGE AVAILABLE - CALL NOW!**

Fife I-5 Commerce Center



**FOR
SUBLEASE**

250,490 SF

2801 78TH AVE E
FIFE, WA

Property Details

Available Size : 250,490 SF

Office : 12,000 SF

Available : Now

Master Lease Expiration : December 31, 2029

NEWMARK

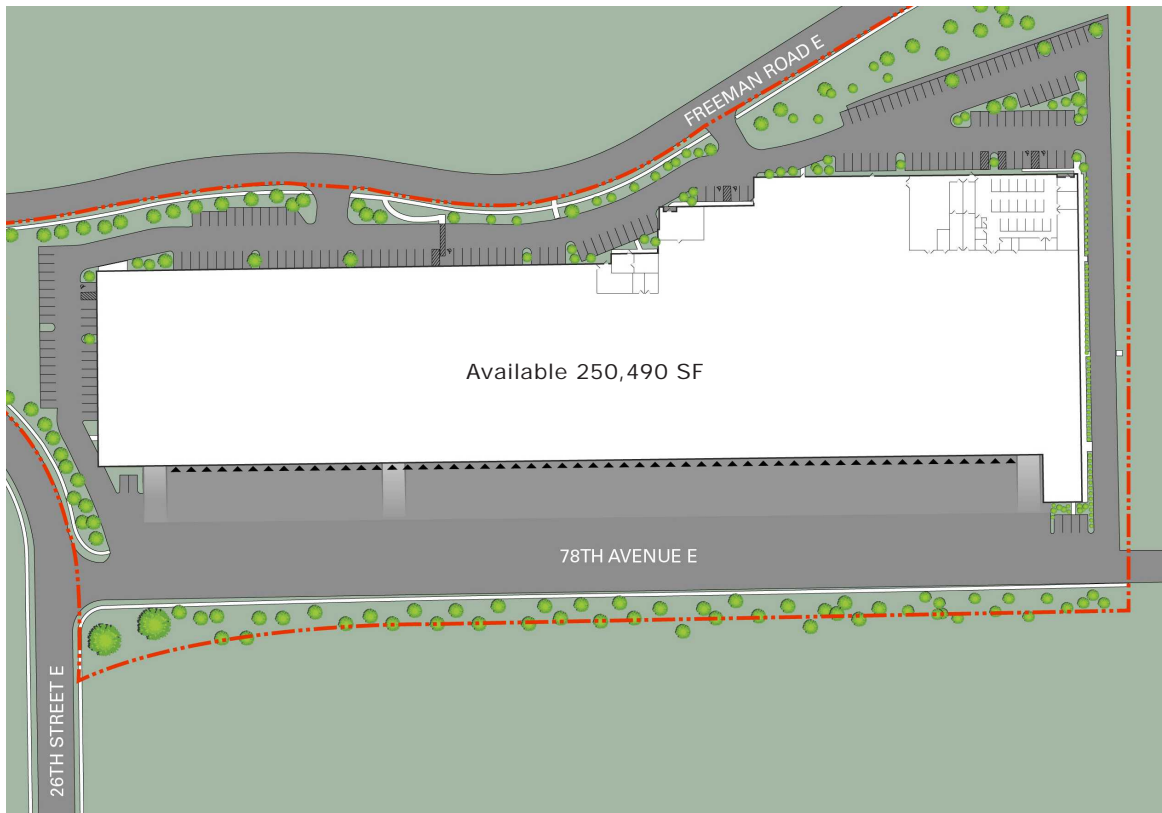
Thad Mallory, SIOR
Executive Vice Chairman
t 425-362-1410
thad.mallory@nmrk.com

Taylor Hoff, SIOR
Vice Chairman
t 425-362-1388
taylor.hoff@nmrk.com

Morgan Richey, SIOR
Managing Director
t 425-362-1409
morgan.richey@nmrk.com

FLOOR PLAN

2801 78TH AVE E, FIFE, WA



Clear Height : 32'

Loading : 63 dock high & 2 grade level

Sprinkler System : ESFR

Lighting : LED lighting 24' candles

All dock positions equipped with seals & bumpers

Slab : 6" 3,500 PSI

Equipment power drops through out

42 dock positions equipped with restraints

10 dock positions equipped with 30,000 lbs. levelers



East Fife
Location

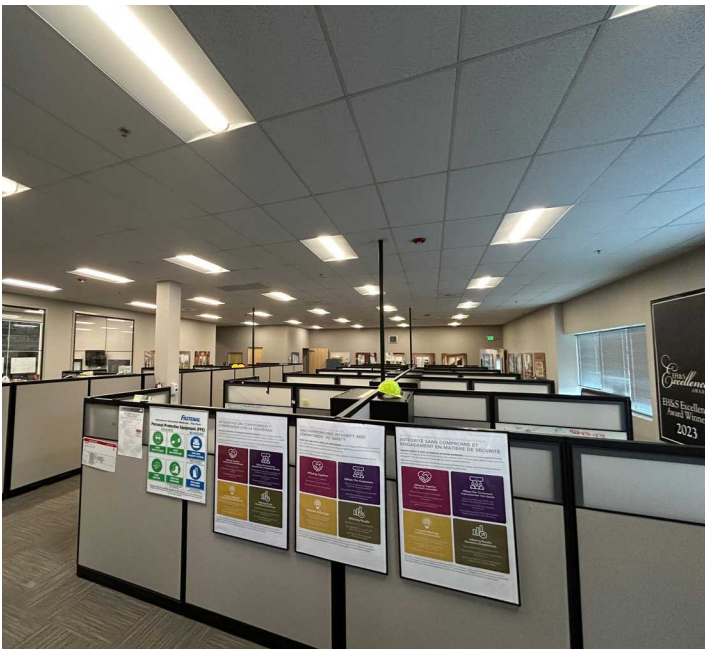
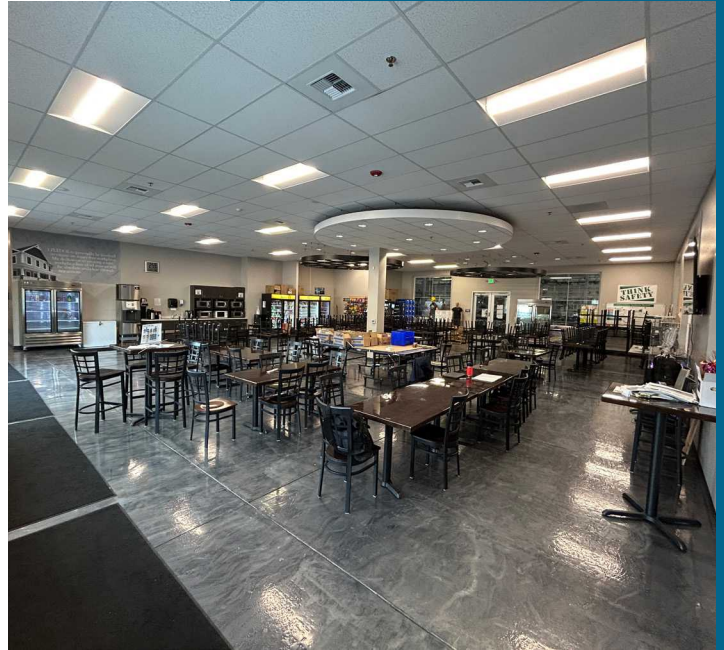


Access
to I-5

NEWMARK

PHOTOS

2801 78TH AVE E, FIFE, WA



NEWMARK

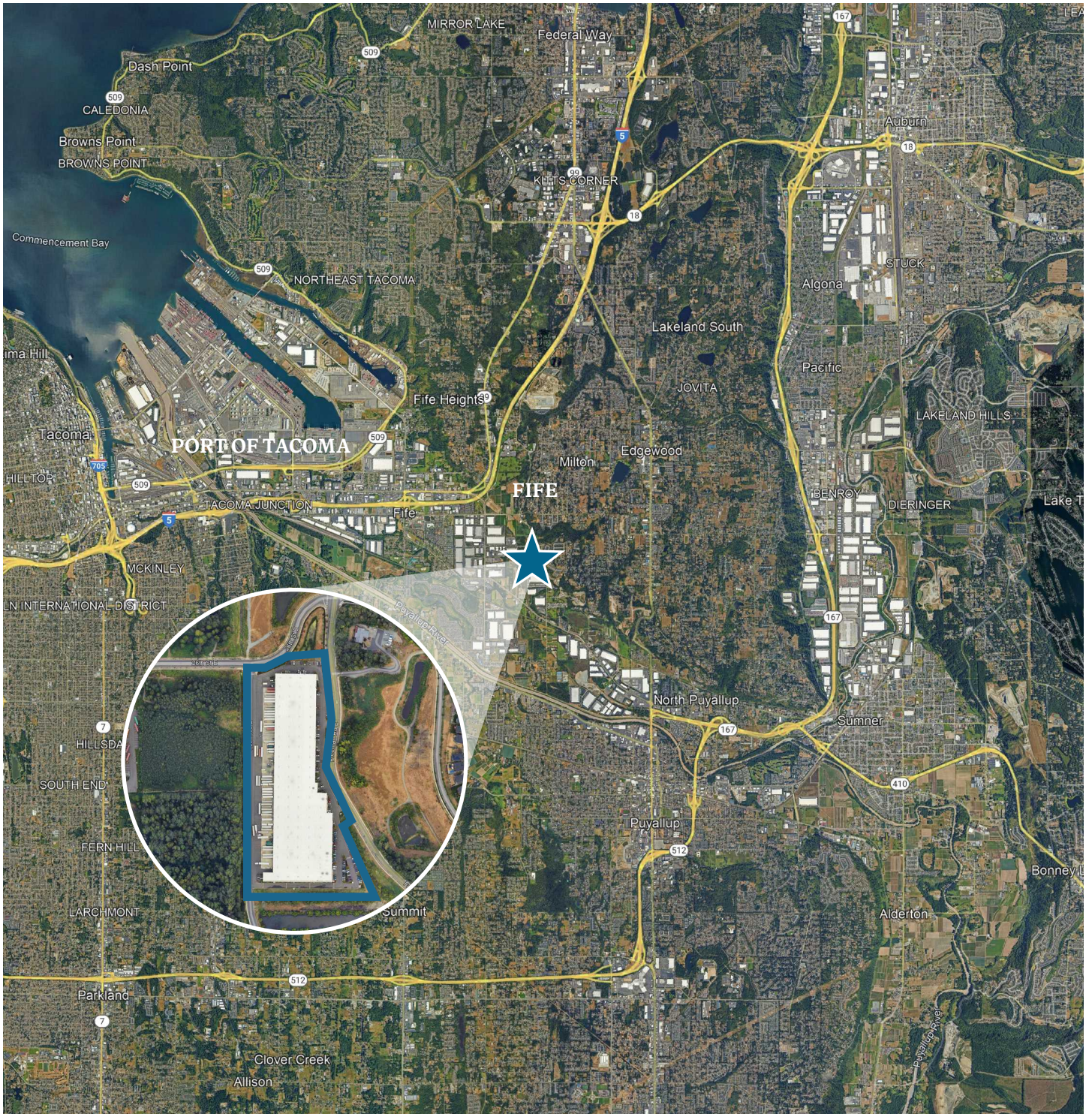
Thad Mallory, SIOR
Executive Vice Chairman
t 425-362-1410
thad.mallory@nmrk.com

Taylor Hoff, SIOR
Vice Chairman
t 425-362-1388
taylor.hoff@nmrk.com

Morgan Richey, SIOR
Managing Director
t 425-362-1409
morgan.richey@nmrk.com

AERIAL

2801 78TH AVE E, FIFE, WA



NEWMARK

The distributor of this communication is performing acts for which a real estate license is required. The information contained herein has been obtained from sources deemed reliable but has not been verified and no guarantee, warranty or representation, either express or implied, is made with respect to such information. Terms of sale or lease and availability are subject to change or withdrawal without notice. 18-1023