

FOR LEASE

3001 Mile Hill Drive
Port Orchard, WA 98366

AVAILABLE

DESERT SUN
TANNING SALON

Allstate

PIZZA
MELTDOWN



MILE HILL RETAIL

Lisa Tallman | Jamie Firth

First Western Properties—Tacoma Inc. | 253.472.0404
6402 Tacoma Mall Blvd, Tacoma, WA 98409 | fwp-inc.com

AVAILABLE

2,890 SF \$22.00 PSF PLUS \$12.00 EST NNN

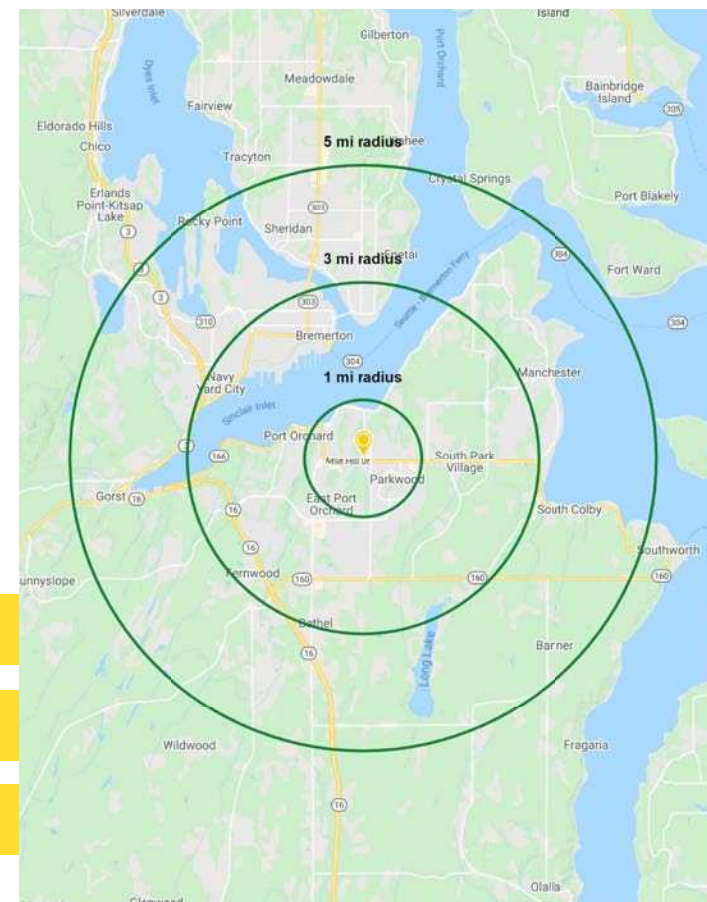
- OWNER/USER OPPORTUNITY!
- Endcap with drive-thru
- Adjacent to Albertsons anchored shopping center
- Located on Port Orchard's busy Mile Hill Drive with 15,674 CPD



TENANTS



PIZZA
MELTDOWN



Regis - 2025

Population

Average HH Income

Daytime Population

Mile 1

8,143

\$115,893

5,306

Mile 3

52,969

\$111,215

28,763

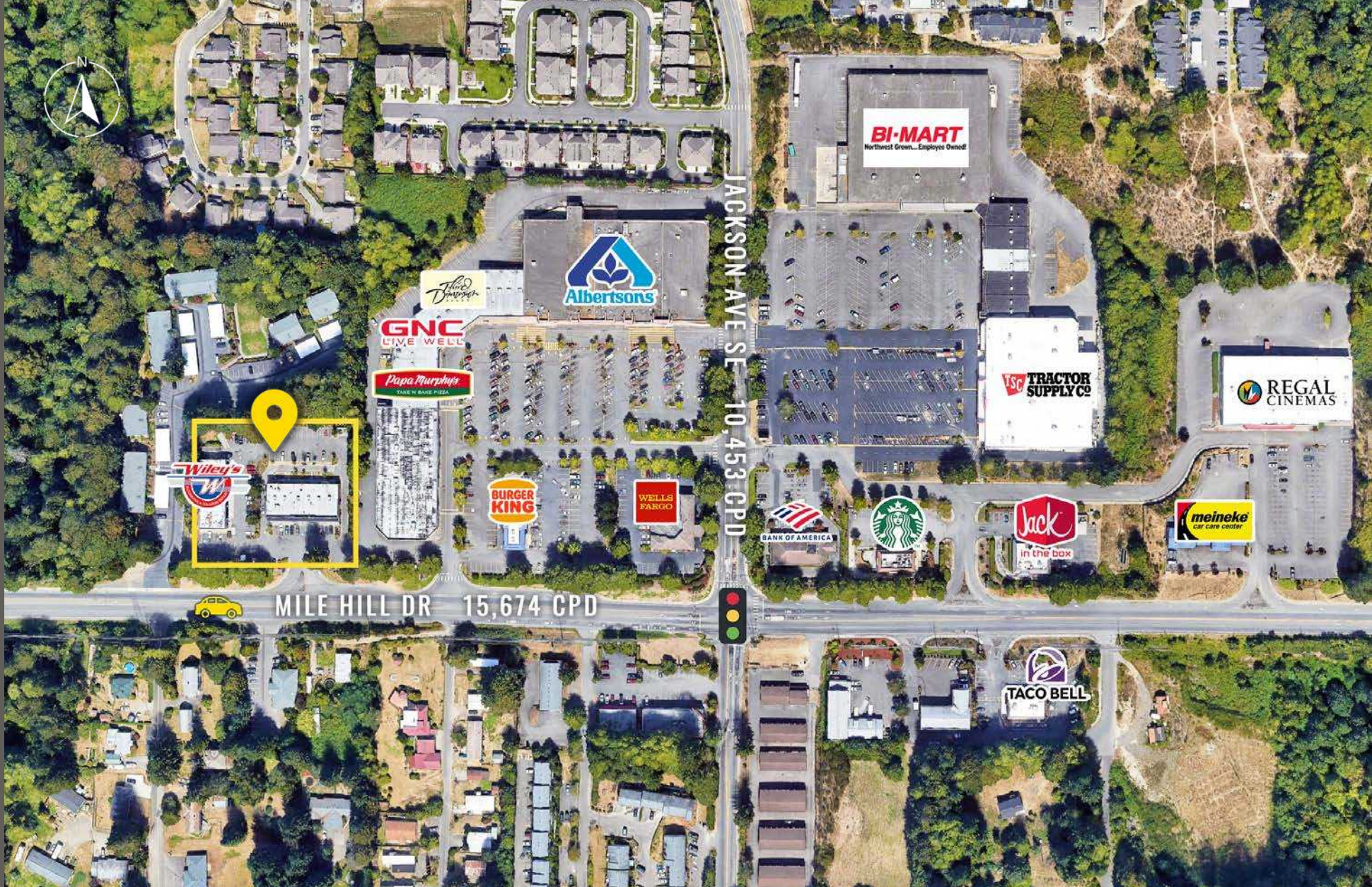
Mile 5

107,761

\$113,164

59,981

LOCATION DETAILS



Located moments from HWY 16



Located in the Port Orchard Retail Core

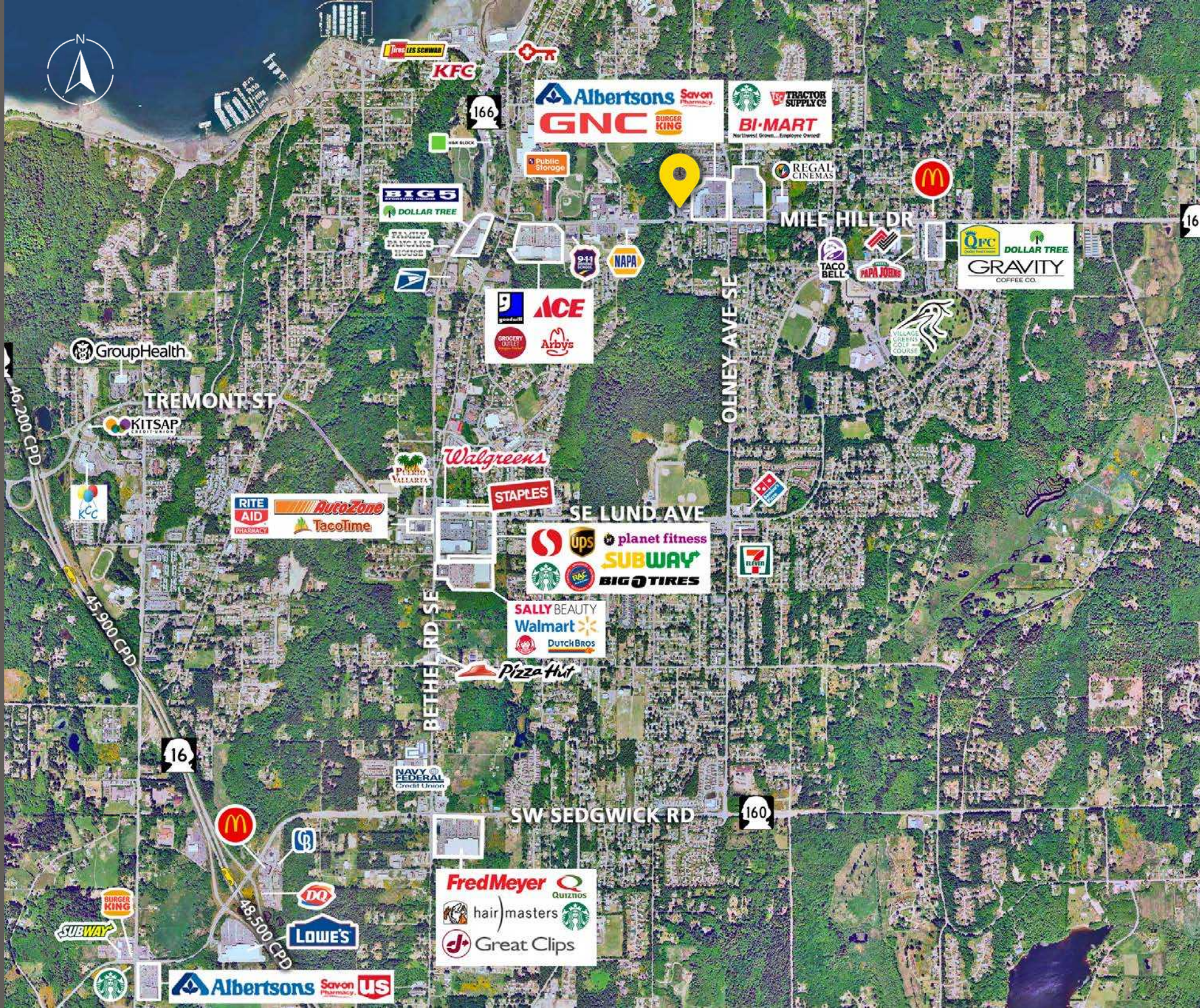


15,674 CPD Mile Hill Drive

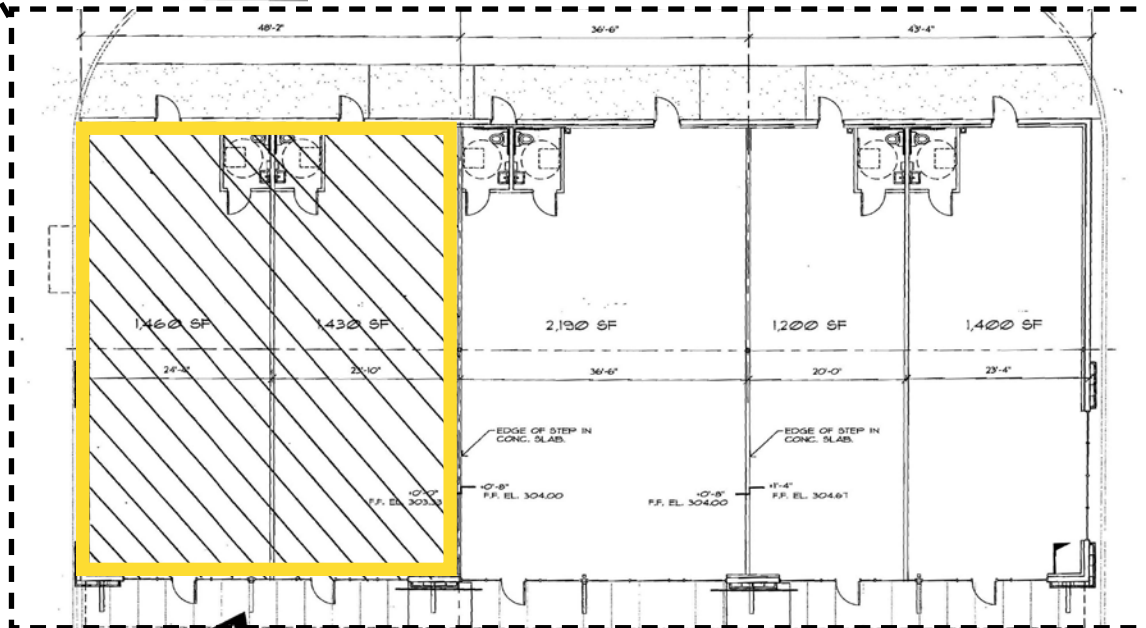
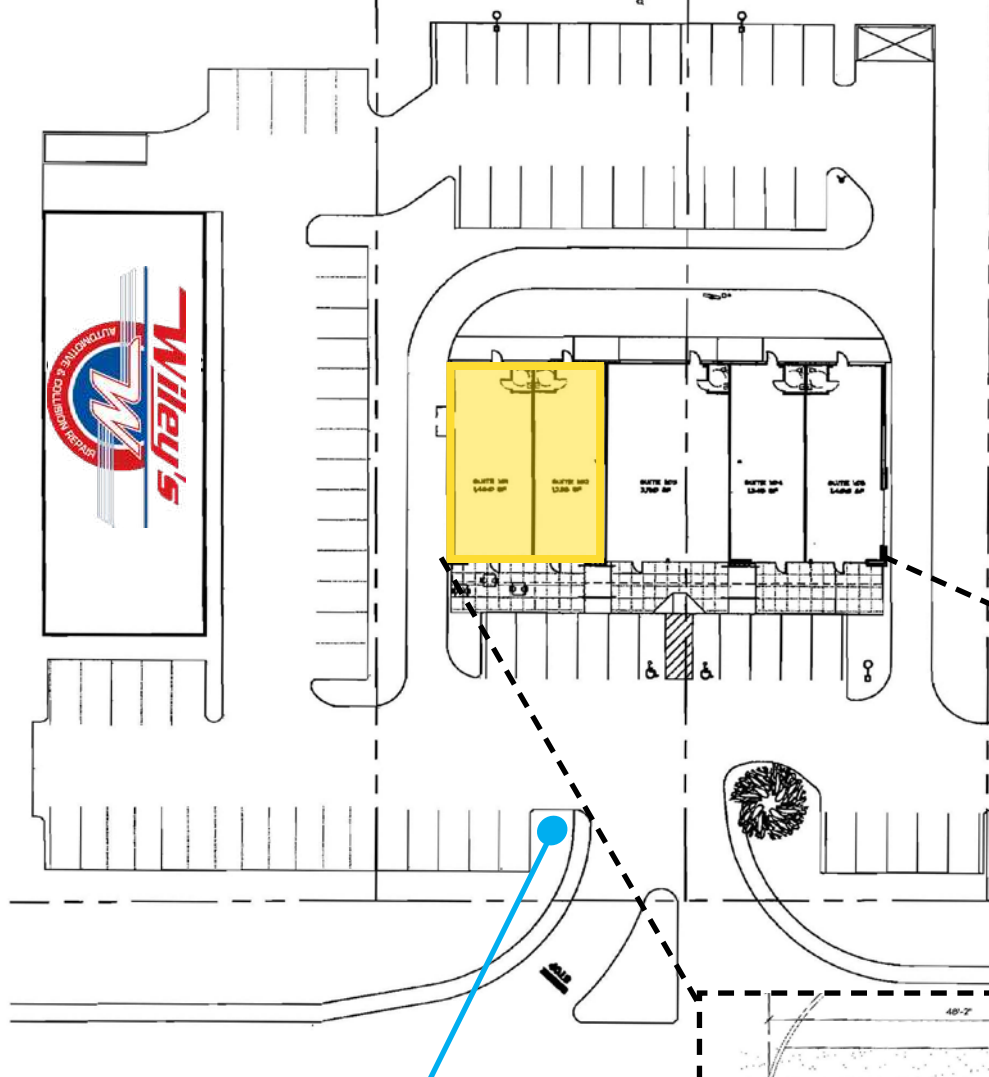


10,453 CPD Jackson Ave SE

LOCATION AERIAL



SITE PLAN




TACOMA | KIRKLAND | PORTLAND | SEATTLE

RELATIONSHIP FOCUSED.
RESULTS DRIVEN.




LISA TALLMAN

 253.471.5504

 lisa@firstwesternproperties.com

JAMIE FIRTH

 253.284.3649

 jamie@firstwesternproperties.com



First Western Properties—Tacoma Inc. | 253.472.0404
6402 Tacoma Mall Blvd, Tacoma, WA 98409 | fwp-inc.com

© First Western Properties, Inc. DISCLAIMER: The above information has been secured from sources believed to be reliable, however, no representations are made to its accuracy. Prospective tenants or buyers should consult their professional advisors and conduct their own independent investigation. Properties are subject to change in price and/or availability without notice.