

# FLORA INDUSTRIAL CENTER

INDUSTRIAL SPACE FOR LEASE / 3014 N. FLORA ROAD, BLDG 4B / SPOKANE VALLEY WA 99216



**CONTACT**

**DAVE DOWERS**  
509.606.5092

daved@tokcommercial.com

**HIGHLIGHTS**

- Ample parking.
- Office expansion potential , TI budget available
- 3 phase power available
- Multi-Building light industrial complex on 9.77 acres.
- Pylon signage and building signage available
- Heated and insulated with LED lighting.
- Less than 2 miles to I-90 ramps at Sullivan Road.
- Tenants include Cosmos Granite, Interstate Battery, Complete Suite Furniture, Hardwoods, Inc., College Hunks Movers, Kokua Volleyball Club and Evergreen Railroad Club.

**DETAILS**

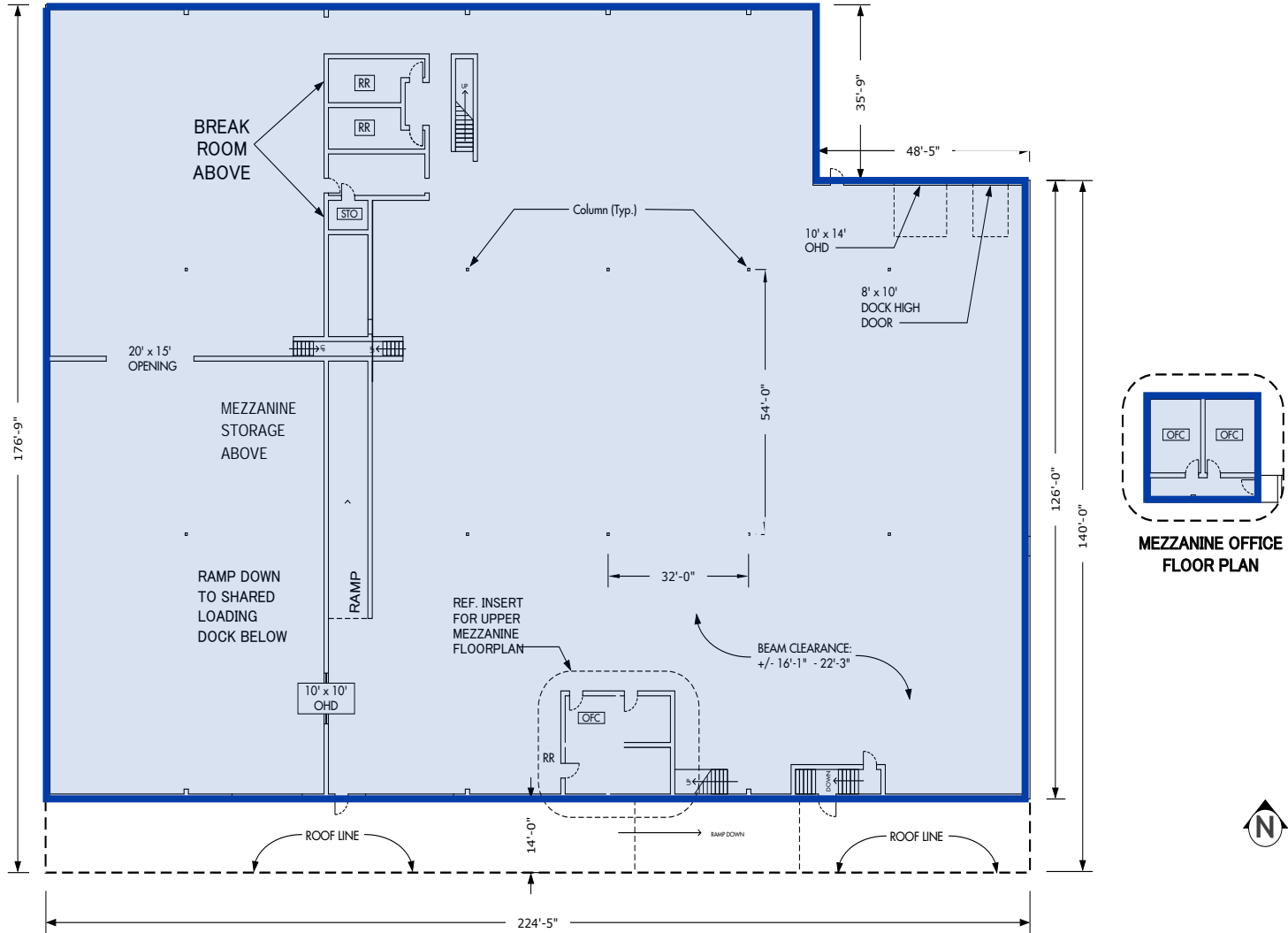
AVAILABLE - BLDG 4B-UL	SIZE	LEASE RATE	BASE RENT
Office	995 SF		
Warehouse	34,030 SF		
Mezz Storage	400 SF		
Mezz Breakroom	1,055 SF		
<b>Total</b>	<b>36,480 SF</b>	<b>\$0.50/SF/Mo.</b>	<b>\$18,240/Mo./NNN</b>

<b>CENTER SIZE</b>	173,360 SF	<b>SPRINKLERS</b>	Yes
<b>CLEAR HEIGHT</b>	16' - 22'	<b>LEASE TYPE</b>	NNN
<b>GRADE LEVEL</b>	10'X14'	<b>AVAILABLE</b>	Immediately
<b>DOCK HIGH</b>	8'X10"	<b>EST. NNN'S</b>	\$0.10/SF

**ADDITIONAL GRADE + DOCK LOADING AVAILABLE**

# BUILDING 4B-UL FLOOR PLAN





BUILDING 4B | UPPER LEVEL



GRADE AND DOCK HIGH LOADING

UPDATED: 1.20.2026

THIS PROPERTY IS EXCLUSIVELY MARKETED BY TOK INLAND NORTHWEST LLC DBA TOK COMMERCIAL

This information was obtained from sources believed reliable but cannot be guaranteed. Any opinions or estimates are used for example only.

**TOK**COMMERCIAL.COM



**THE PARK**

**3,181 VPD**

**5,632 VPD**

**EUCLID AVE**

**N FLORA RD**

**BLDG 4B**



