



CEDAR PLAZA



RELATIONSHIP FOCUSED. RESULTS DRIVEN.

For Lease

22803 44TH AVE W
MOUNTLAKE TERRACE, WA



PRESENTED BY:

ANGELA OLIVERI
Executive Vice President
D: 206.853.1330
aoliveri@fwp-inc.com

ANTONIO OLIVERI
Broker
D: 425.229.2563
antonio@fwp-inc.com

SEBASTIAN CAMACHO
Broker
D: 510.333.0624
sebastian@fwp-inc.com



PROPERTY OVERVIEW | PROPERTY SUMMARY

CEDAR PLAZA is a dominant neighborhood retail center in Mountlake Terrace, anchored by QFC and supported by a strong mix of service-oriented tenants. The property benefits from excellent visibility, easy ingress and egress, and a dense residential trade area. Located near major highways and regional transit, the center remains a high-traffic destination for everyday shopping and services. Rare vacancy opportunity.

PROPERTY DETAIL

AVAILABLE | SUITE 1 1,044 SF Resturant

AVAILABLE | SUITE A1 1,086 SF Retail

AVAILABLE | SUITE D2 11,906 SF Total Junior Anchor
Main Floor: 10,834 SF
Mezzanine: 1,072 SF
Covered Patio: 6,438 SF

AVAILABLE | SUITE E1 1,390 SF Retail

ASKING RATE \$18-\$40 PSF, NNN

NNN'S \$8.26 PSF

CO-TENANTS QFC, CVS Pharmacy, Starbucks, East Coast Enzo's, Ringer's Pub & Grill, Patty's Eggnest, Sound Community Bank, Pet Adventure, Las Espuelas Mexican Restaurant

PARKING Generous Parking



PROPERTY OVERVIEW | SITE PLAN

CLICK FOR SUITE DETAILS



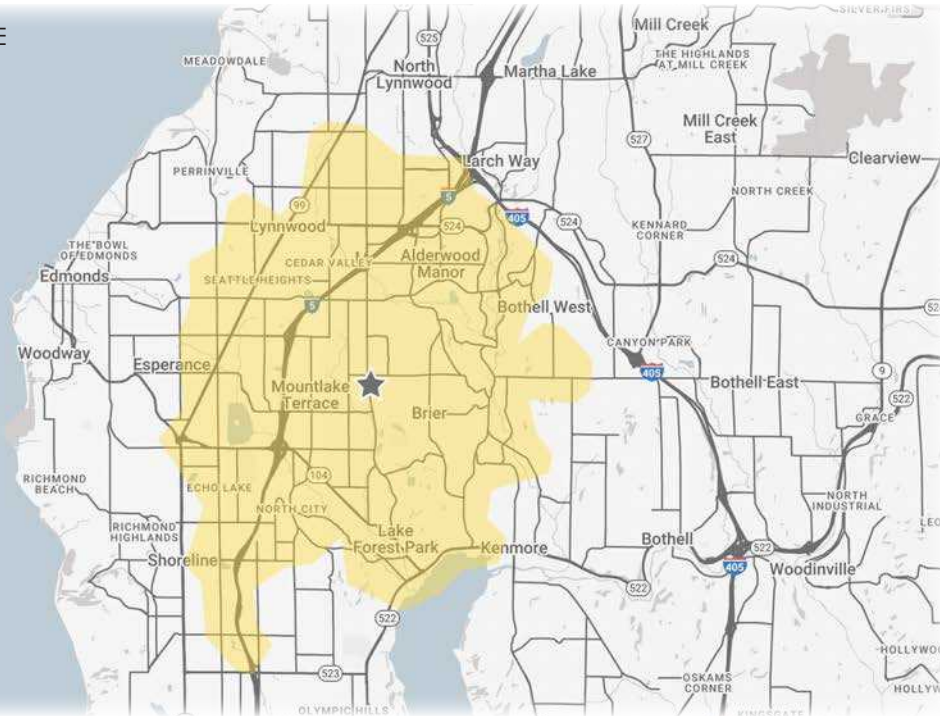
SUITE	TENANT	SF
1	RESTAURANT	1,044 SF
2	Hair Experts	660 SF
3	Classy Nails	660 SF
4	Patty's Eggnest	3,350 SF
7	Las Espuelas Mexican	2,123 SF
A1	RETAIL	1,086 SF
A2	MLT Licensing	2,561 SF
B1	Pending	6,089 SF
B2	Laundromat	1,644 SF
B3	Ringer's Pub & Grill	3,350 SF
B4	Veterinary Clinic	2,440 SF
B5	Storage	1,544 SF
D1	CVS Pharmacy	12,146 SF
D2	JUNIOR ANCHOR	11,906 SF
E1	RETAIL	1,390 SF
E2	Smoke Shop	1,500 SF
E3	Massage	1,500 SF
E4	Pet Adventure	4,350 SF
22807	Sound Community Bank	2,000 SF
22808	Starbucks	1,725 SF
22809	Enzo's East Coast Pizzeria	1,313 SF











PROPERTY OVERVIEW | DEMOGRAPHICS

MOUNTLAKE TERRACE, WA, strategically positioned 14 miles north of Seattle, has emerged as the Puget Sound's premier transit-oriented core, anchored by its operational Link Light Rail station which provides rapid, reliable service to Downtown Seattle, the University of Washington, and Sea-Tac International Airport. This superior connectivity, combined with direct I-5 access, offers residents metropolitan access at a Snohomish County value within a dynamic regional economy supported by giants like Premera Blue Cross, Amazon, and Microsoft. The city is actively enhancing its quality of life through the ongoing Town Center revitalization, creating a walkable hub seamlessly integrated with the transit center, while preserving its natural beauty, excellent school district, and diverse community, making MLT one of the North Sound's most attractive places for living and investment.

10 MIN DRIVE TIME



 132,822 POPULATION 10 MIN DT	 54,542 NO OF HOUSEHOLDS 10 MIN DT
 \$148,569 AVERAGE HH INCOME 10 MIN DT	 \$741,731 MEDIAN PROPERTY VALUE 10 MIN DT
 38.7 YEARS OLD MEDIAN AGE	 \$3.56B TOTAL NON-RETAIL EXPENDITURE
 85,368 DAYTIME ADJ. POPULATION 10 MIN DT	 10,673 ADT AT INTERSECTION

RELATIONSHIP FOCUSED. RESULTS DRIVEN.

KIRKLAND | TACOMA | PORTLAND | SEATTLE

For more information, please contact one of the following individuals:

PRESENTED TO:

ANGELA OLIVERI

Executive Vice President

D: 206.853.1330
aoliveri@fwp-inc.com

ANTONIO OLIVERI


Broker

D: 425.229.2563
antonio@fwp-inc.com

SEBASTIAN CAMACHO

Broker

D: 510.333.0624
sebastian@fwp-inc.com

11621 NE 97th Lane NE | Kirkland, WA 98304 |  425.822.5522 | fwp-inc.com



© First Western Properties, Inc. DISCLAIMER: The above information has been secured from sources believed to be reliable, however, no representations are made to its accuracy. Prospective tenants or buyers should consult their professional advisors and conduct their own independent investigation. Properties are subject to change in price and/or availability without notice.