

18911 & 19015 NORTH CREEK PARKWAY  
BOTHELL, WASHINGTON

BRODERICK  
• GROUP •



# PLAZA @ NORTH CREEK

3,134 – 80,852 SF AVAILABLE

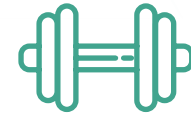


# PLAZA @ NORTH CREEK

## PROPERTY HIGHLIGHTS



CLASS A OFFICE / TECH  
CAMPUS WITH SECURITY /  
CARD KEY ACCESS



NEW TENANT AMENITY EXERCISE  
FACILITY, SHOWERS, LOCKERS, AND  
BIKE STORAGE



RESTAURANTS, DELICATESSEN,  
JOGGING & WALKING TRAILS,  
& NORTSHORE YMCA WITHIN  
WALKING DISTANCE



3-4/1,000 SF PARKING RATIO;  
EXCELLENT ACCESS & FREEWAY  
VISIBILITY (I-405 & SR-522) WITH  
ELECTRIC VEHICLE CHARGING STATIONS



HOTELS WITHIN WALKING  
DISTANCE (WYNDHAM GARDEN  
HOTEL & RESIDENCE INN)



FIBER SERVICES ARE PROVIDED BY  
FRONTIER FIOS. CABLE PROVIDED  
BY COMCAST. ADDITIONAL TELECOM  
SERVICES PROVIDED BY VERIZON,  
AT&T & ACCESS TELEPHONE  
SOLUTIONS, INC.

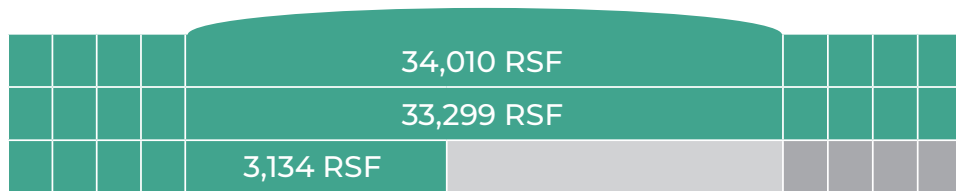
# PLAZA @ NORTH CREEK

## AVAILABLE SPACE

SPACE	SIZE	AVAILABLE	NOTES
<b>EAST BUILDING • 18911 NORTH CREEK PARKWAY, BOTHELL, WA</b>			
▶ Suite 200	10,409 RSF	NOW	
<b>NORTH BUILDING • 19015 NORTH CREEK PARKWAY, BOTHELL, WA</b>			
Suite 107	3,134 RSF	NOW	
▶ Suite 200	33,299 RSF	NOW	
▶ Suite 300	34,010 RSF	NOW	Partially Furnished
FLOORS 1-3 CAN BE COMBINED FOR A TOTAL OF <b>70,443 RSF</b>			
<b>TOTAL SQUARE FOOTAGE AVAILABLE: 80,852 RSF</b>			

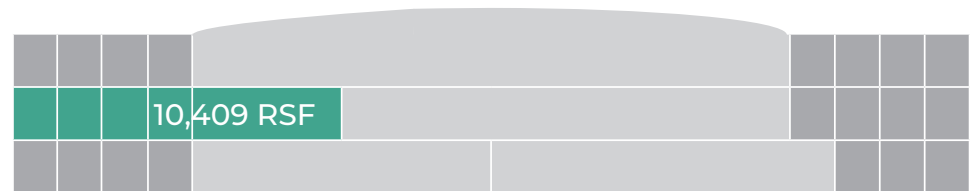
# PLAZA @ NORTH CREEK

## NORTH BUILDING



70,443 RSF TOTAL AVAILABLE

## EAST BUILDING



10,409 RSF TOTAL AVAILABLE

# PLAZA @ NORTH CREEK

NORTH BUILDING

19015 NORTH CREEK PKWY  
BOTHELL, WA



**TYLER SLONE**

425.274.4281

[slone@broderickgroup.com](mailto:slone@broderickgroup.com)

**PAUL JERUE**

425.646.5223

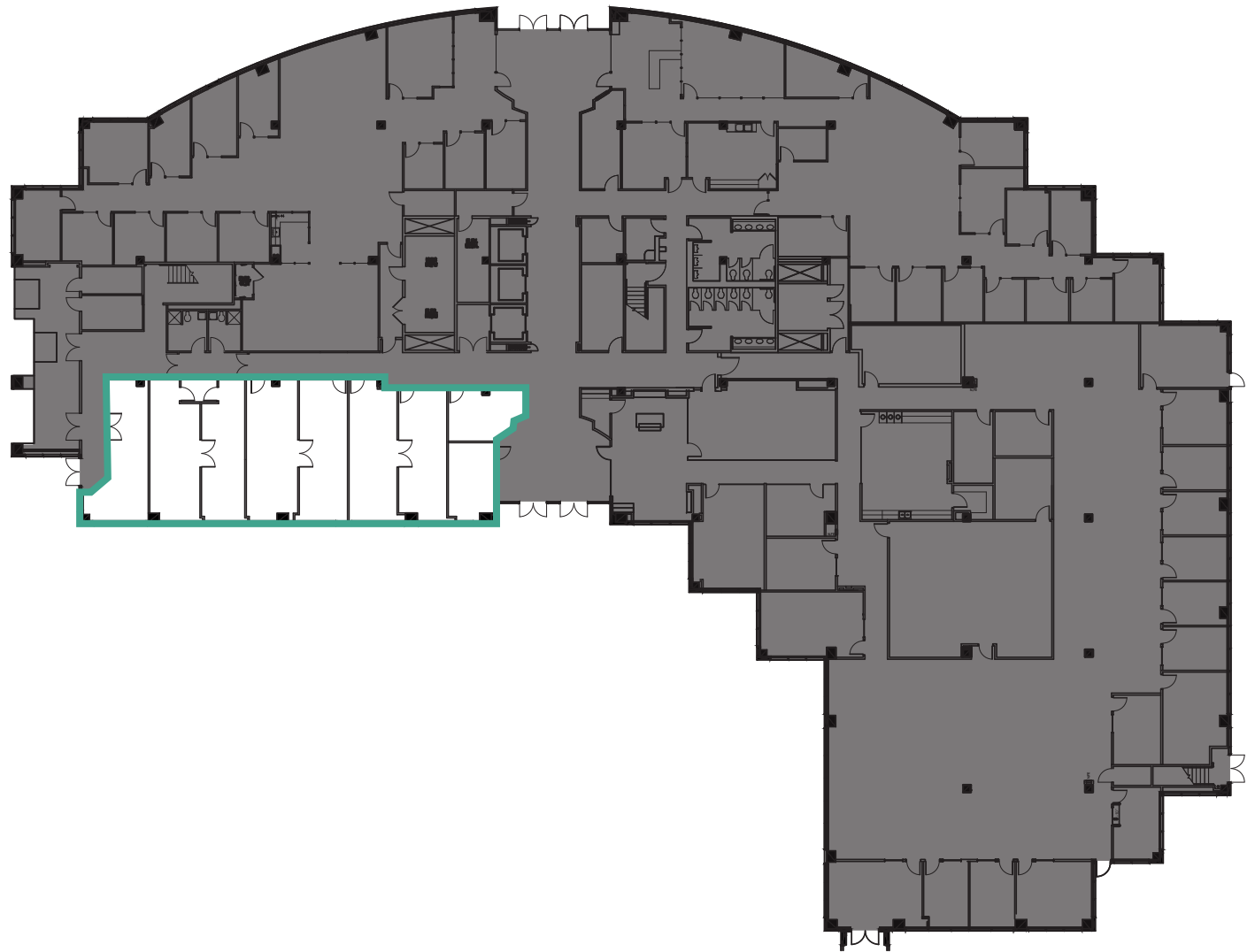
[jerue@broderickgroup.com](mailto:jerue@broderickgroup.com)

**BRODERICK**  
• GROUP •



# FLOOR PLAN

SUITE 107 | 3,134 RSF | AVAILABLE NOW



# PLAZA @ NORTH CREEK

NORTH BUILDING

19015 NORTH CREEK PKWY  
BOTHELL, WA

**TYLER SLONE**

425.274.4281

slone@broderickgroup.com

**PAUL JERUE**

425.646.5223

jerue@broderickgroup.com

**BRODERICK**  
• GROUP •

# FLOOR PLAN

SUITE 200 | 33,299 RSF | AVAILABLE NOW

[▶ VIRUTAL TOUR](#)



# PLAZA @ NORTH CREEK

NORTH BUILDING

19015 NORTH CREEK PKWY  
BOTHELL, WA

**TYLER SLONE**

425.274.4281

slone@broderickgroup.com

**PAUL JERUE**

425.646.5223

jerue@broderickgroup.com

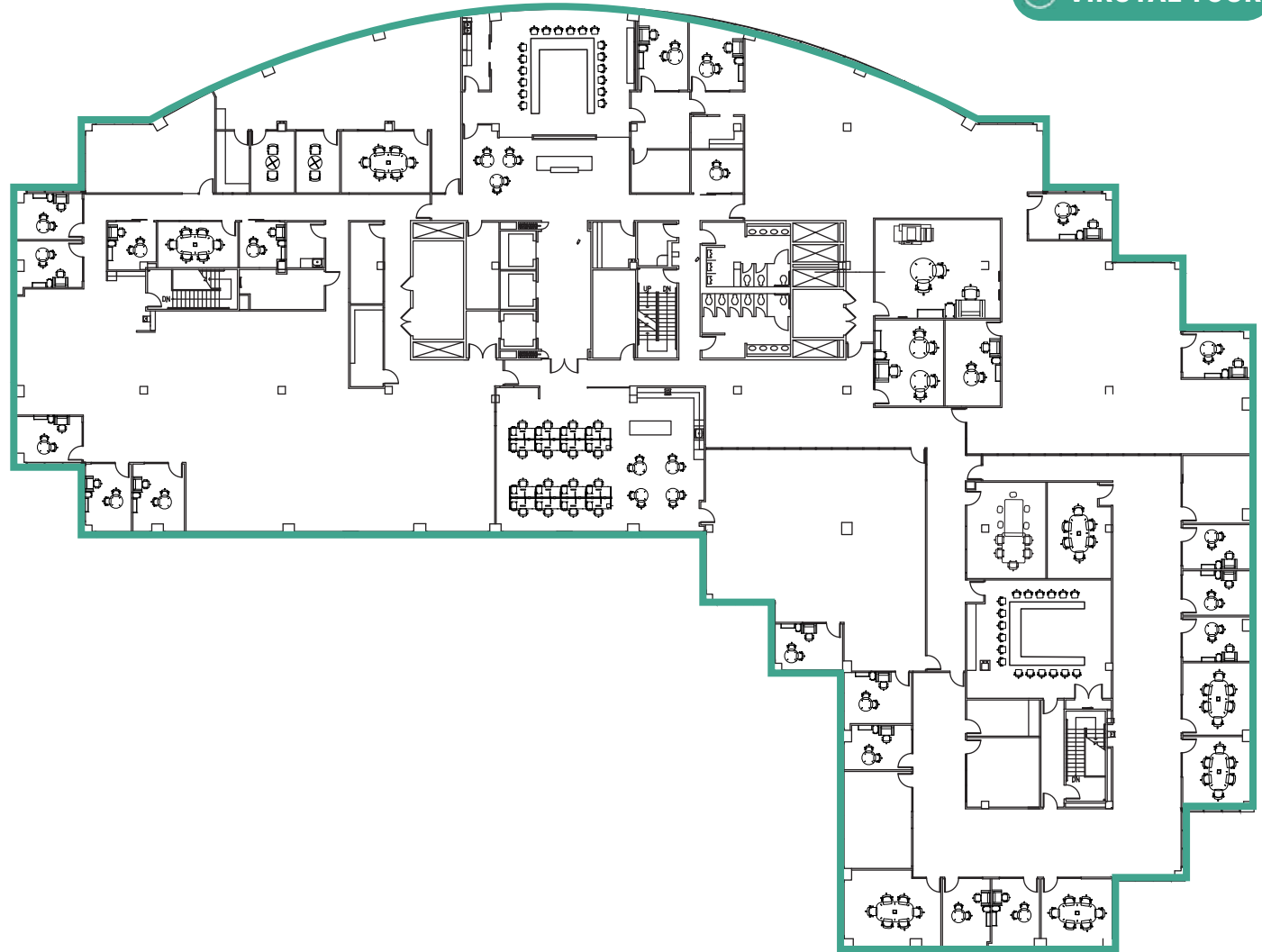
**BRODERICK**  
• GROUP •



# FLOOR PLAN

SUITE 300 | 34,010 RSF | AVAILABLE NOW  
PARTIALLY FURNISHED

[▶ VIRUTAL TOUR](#)



# PLAZA @ NORTH CREEK

EAST BUILDING

18911 NORTH CREEK PKWY  
BOTHELL, WA

**TYLER SLONE**

425.274.4281

slone@broderickgroup.com

**PAUL JERUE**

425.646.5223

jerue@broderickgroup.com

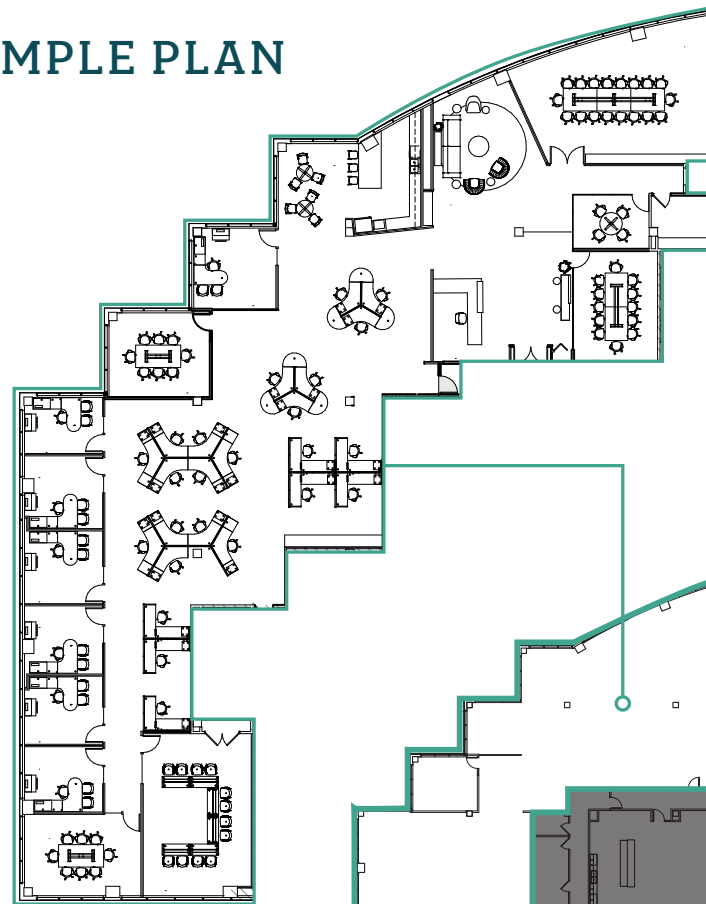
**BRODERICK**  
• GROUP •

# FLOOR PLAN

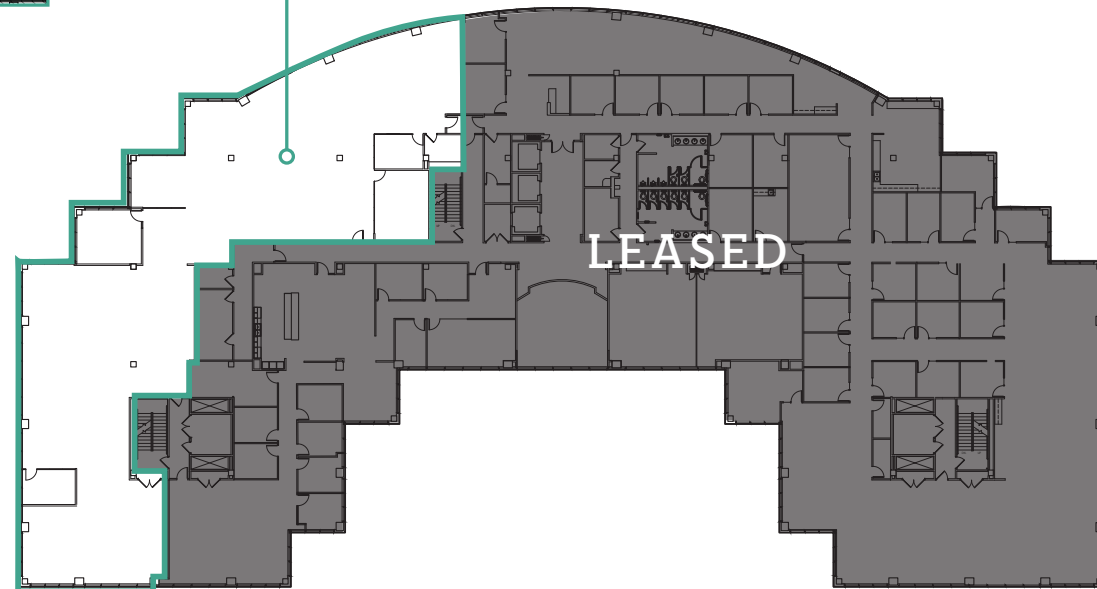
SUITE 200 | 10,409 RSF | AVAILABLE NOW

[▶ VIRUTAL TOUR](#)

## SAMPLE PLAN



AS-BUILT



LEASED

