

FOR LEASE
BUILT-OUT RESTAURANT SPACE

BALLARD PUBLIC LOFTS
6460 24th AVE NW, Seattle WA 98107

AVAILABLE
JULY 2026

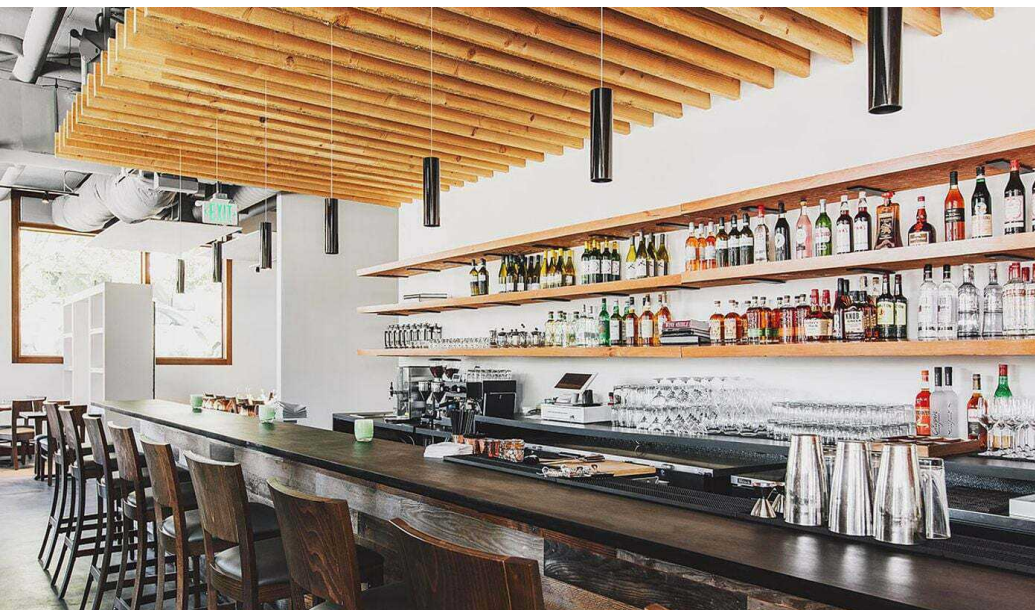
For more information please contact:

LAURA MILLER
laura@gibraltarusa.com
206.351.3573



6460 24TH AVE NW, SEATTLE, WA 98107

BUILT-OUT RESTAURANT SPACE



PROPERTY HIGHLIGHTS

- Rare opportunity to lease a high-end, quality, built-out restaurant space located at the base of Ballard Public Lofts, a mixed-use building comprised of 99 loft units above a community focused, activated retail plaza on the ground level
- Designed by renowned architecture firm: Olson Kundig
- Modern, light-filled space features well-appointed "chef's kitchen" with 16 ft Type 1 hood, full bar, high ceilings, large storefront windows, concrete floors, HVAC
- Full equipment package included in lease
- Building retail co-tenants are Cloudy Cafe and Single Hill Commons
- 13 shared garage parking stalls for retail tenants, no charge
- 3,289 Sq Ft
- New long term lease available: Rental Rate \$32/SF/YR plus 2026 estimated NNN(\$10.34/SF/Year) = \$11,604.69/month



43

TRANSIT SCORE



84

WALK SCORE



91

BIKE SCORE



92,205

TOTAL POPULATION



43,215

TOTAL HOUSEHOLDS



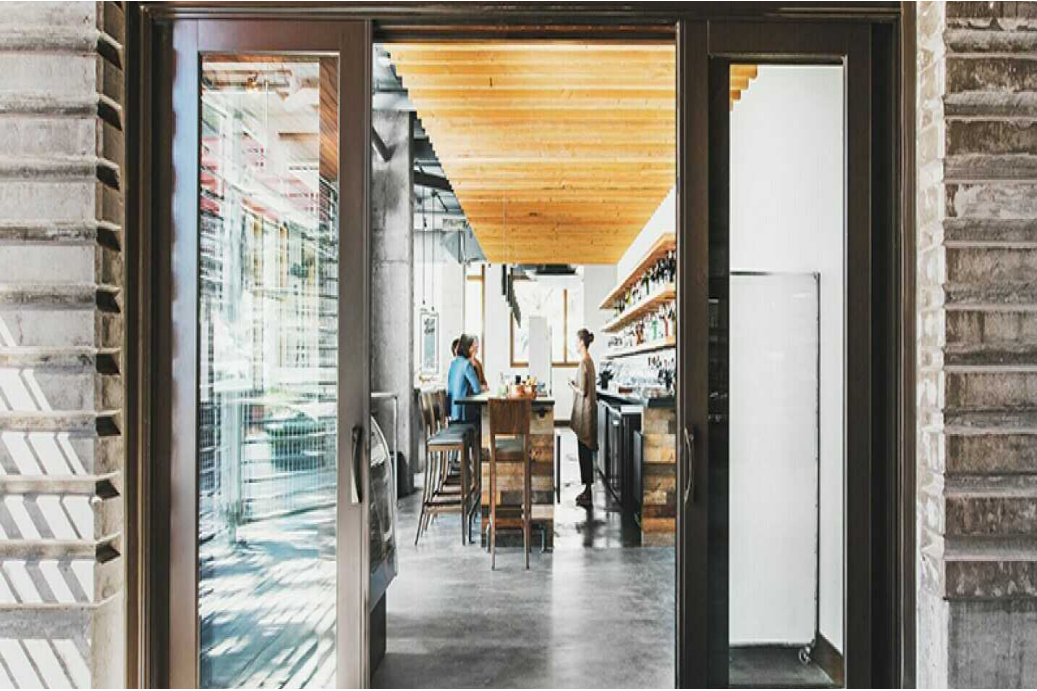
\$121,892

MEDIAN INCOME

* Estimated 2025 Demographics based on a 2 mile radius

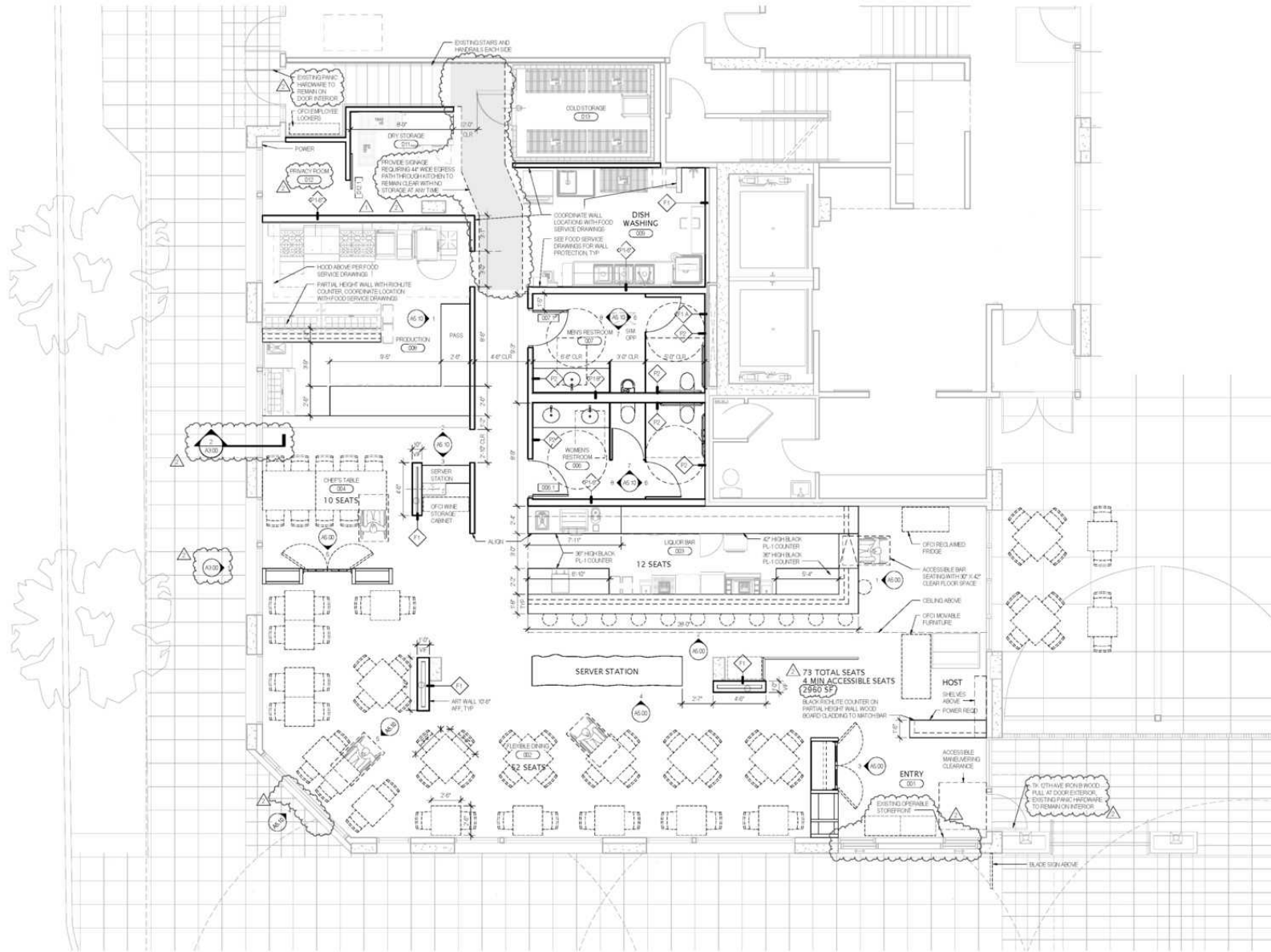
6460 24TH AVE NW, SEATTLE, WA 98107

BUILT-OUT RESTAURANT SPACE



This information has been obtained from sources believed reliable. No guarantee, warranty or representation, express or implied, is made as to the accuracy of the information contained herein, and same is submitted subject to errors, omissions, change of price, rental or other conditions withdrawal without notice, and to any special listing conditions, imposed by our principals. Any projections, opinions, assumptions or estimates used are for example only and do not represent the current or future performance of the property.

BUILT-OUT RESTAURANT SPACE



01 MAIN LEVEL PLAN
SCALE: 1/4" = 1'-0"

6460 24th Ave NW, SEATTLE, WA 98107

BUILT-OUT RESTAURANT SPACE

