

16300

MILL CREEK BLVD

Retail / Office **For Lease**



LISTING INFORMATION

ADDRESS: 16300 Mill Creek Blvd, Mill Creek, WA

ZONING: Town Center (TC)

SUITES	SF	TYPE	\$/SF/YR	\$/ MONTH
SUITE 106:	+/- 800	Gross	\$50/SF	\$3,333
SUITE 114:	+/- 400	Gross	\$55/SF	\$1,833
SUITE 201:	+/- 600	Gross	\$36/SF	\$1,800
SUITE 205:	+/- 608	Gross	\$36/SF	\$1,824
SUITE 201 - 205:	+/- 1,208	Gross	\$36/SF	\$3,624

COMMENTS

16300 Mill Creek Boulevard offers a tranquil & professional setting for office & retail tenants, and is situated alongside the North Creek green belt. Ample parking and tenant amenities make it an ideal location for retail, restaurants and professional services.

All information furnished regarding property for sale, rental or financing is from sources deemed reliable, but no warranty or representation is made to the accuracy thereof and same is submitted to errors, omissions, change of price, rental or other conditions prior to sale, lease or financing or withdrawal without notice. No liability of any kind is to be imposed on the broker herein.

LOCATION



16300
MILL CREEK BLVD

Retail / Office For Lease

PROPERTY AERIAL

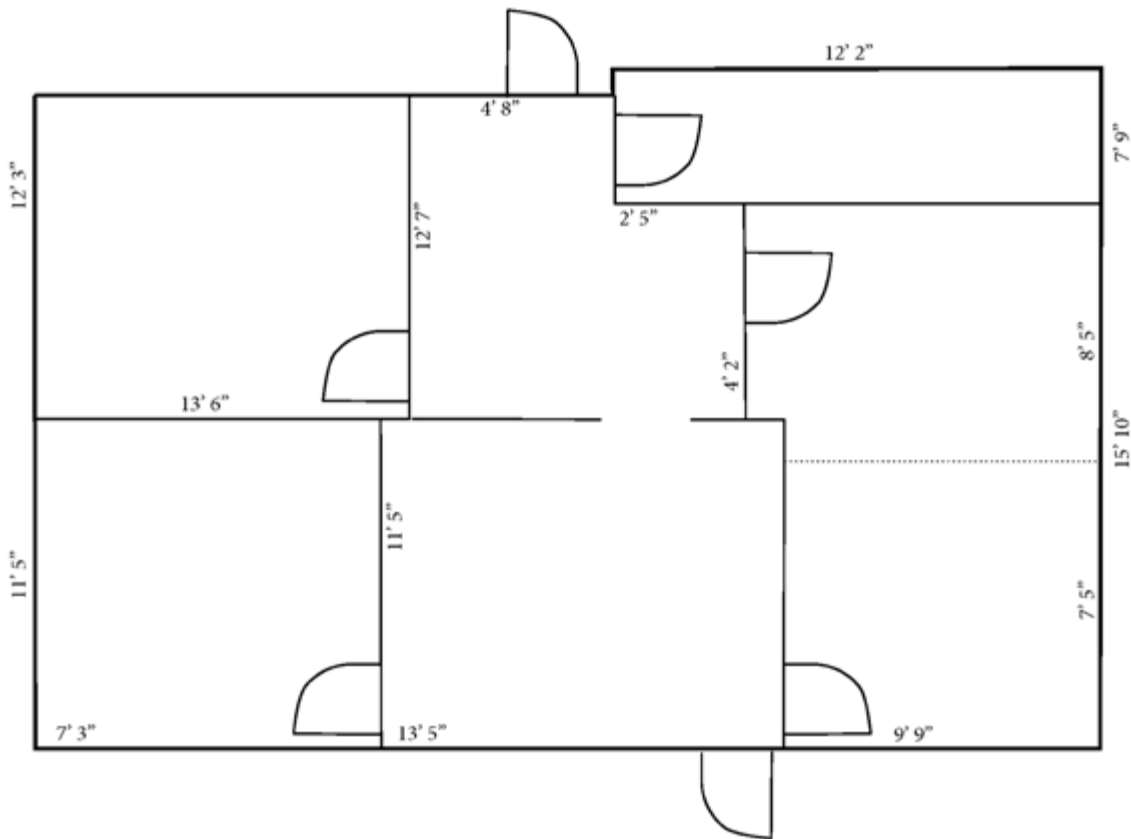


Stren Lea
stren@lee-associates.com
206.773.2672

16300
MILL CREEK BLVD
Suite 106

STREET LEVEL RETAIL SUITE

INTERIOR HALL



FRONT ENTRANCE / PARKING LOT

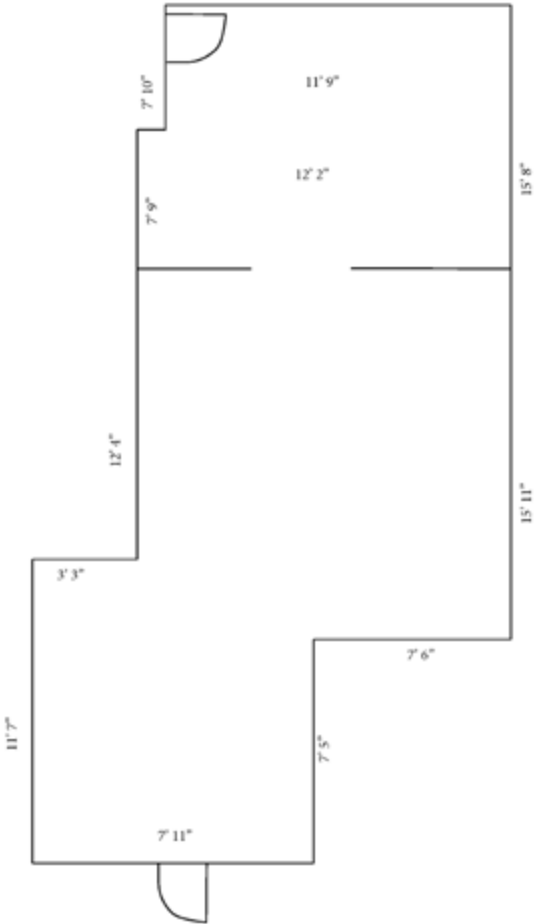


16300
MILL CREEK BLVD
Suite 114

Stren Lea
stren@lee-associates.com
206.773.2672

STREET LEVEL RETAIL SUITE

INTERIOR HALL



FRONT ENTRANCE / PARKING LOT



16300

MILL CREEK BLVD

Suites 201 - 205

2ND STORY PROFESSIONAL OFFICE

