

# PACIFIC INDUSTRIAL PARK



**CLASS A INDUSTRIAL/  
FLEX SPACE**

**14900 40TH AVE NE, BUILDING C - SUITE 101 | MARYSVILLE | WASHINGTON | 98271**

## FOR MORE INFORMATION:

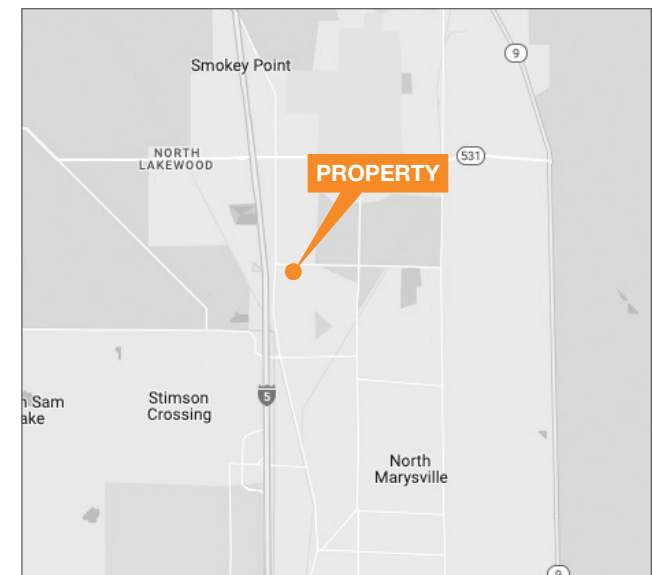
**FLETCHER FARRAR**  
206.787.1469  
ffarrar@neilwalter.com

**JOE SCALZO**  
206.787.1478  
jscalzo@neilwalter.com

**BEN DAVIDSON**  
206.787.1470  
bdavidson@neilwalter.com

## PROPERTY FEATURES

- 9,000 SF available
- 2,081 SF office
- 1,631 SF assembly area
- 2 grade level doors
- Fully sprinklered with 24 ft ceilings
- Institutionally owned and managed
- Central location with easy access to highway system
- Recently completed office refresh
- Available now

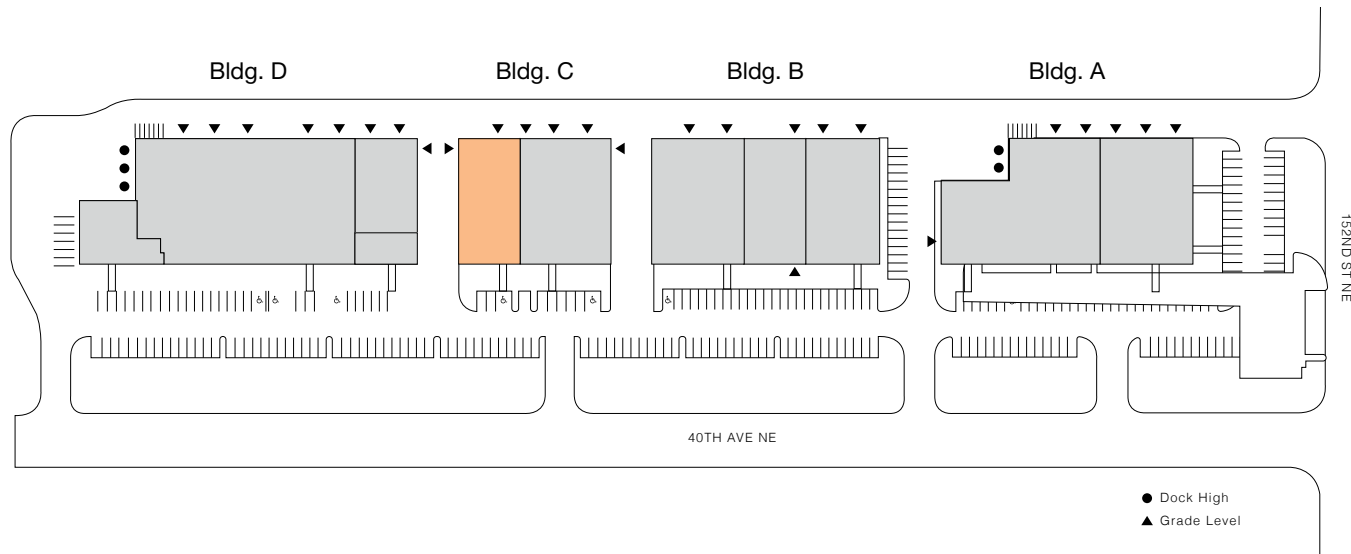


*The information contained herein is believed to be accurate but is not warranted as to its accuracy and may change or be updated without notice. Seller or landlord makes no representation as to the environmental condition of the property and recommends purchaser's or tenant's independent investigation.*



# PACIFIC INDUSTRIAL PARK

## SITE PLAN



### FOR MORE INFORMATION

**FLETCHER FARRAR**  
206.787.1469  
ffarrar@neilwalter.com

**JOE SCALZO**  
206.787.1478  
jscalzo@neilwalter.com

**BEN DAVIDSON**  
206.787.1470  
bdavidson@neilwalter.com

### AVAILABILITIES

■ AVAILABLE ■ OCCUPIED

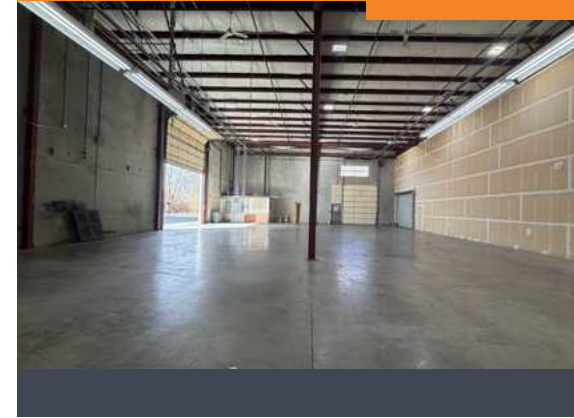
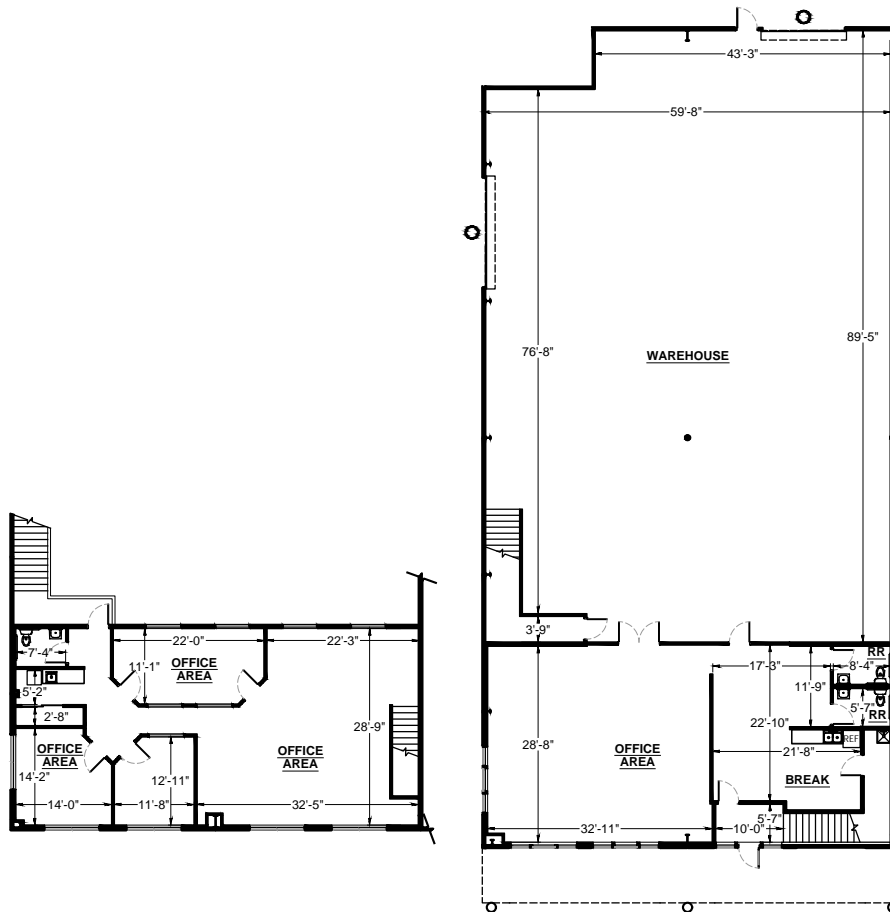
Building	Suite	Total Size	Office Size	Assembly Area	Loading	Floor Plan
C	101	9,000 SF	2,081 SF	1,631 SF	2 GL	<a href="#">VIEW</a>

**PACIFIC INDUSTRIAL PARK**  
14900 40TH AVE NE  
SUITE C101  
MARYSVILLE, WA 98271



# PACIFIC INDUSTRIAL PARK

## FLOOR PLAN



**FOR MORE INFORMATION**

**FLETCHER FARRAR**  
206.787.1469  
ffarrar@neilwalter.com

**JOE SCALZO**  
206.787.1478  
jscalzo@neilwalter.com

**BEN DAVIDSON**  
206.787.1470  
bdavidson@neilwalter.com



**PACIFIC INDUSTRIAL PARK**  
14900 40TH AVE NE  
SUITE C101  
MARYSVILLE, WA 98271

**W NEIL WALTER**  
COMPANY