

**\$0.99/SF, NNN!**

# For Sublease | 1050 W Ewing St

Seattle, WA 98119

*In-city warehouse in North Queen Anne at  
W Ewing & Nickerson.*

## PROPERTY HIGHLIGHTS

- + 3 oversized grade level loading doors
- + Ceiling Height ±18'
- + Zoning UI U/45
- + Sublease expires 10/31/2027
- + NNN = \$0.34 SF/Mo

TOTAL SF

**16,576 SF**

WAREHOUSE SF

**12,853 SF**

2ND FL OFFICE/MEZZ SF

**3,723 SF**

DIVISIBLE TO

**12,853 SF**

**BOB SWAIN, CCIM**

Partner  
+1 206 794 0443  
bswain@nai-psp.com

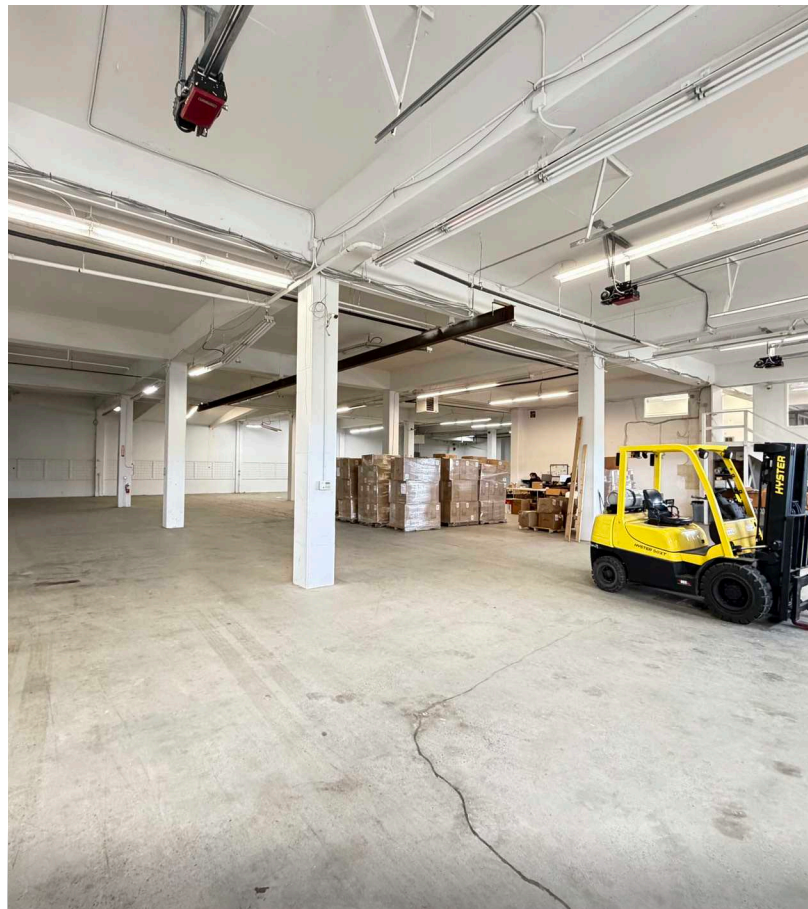
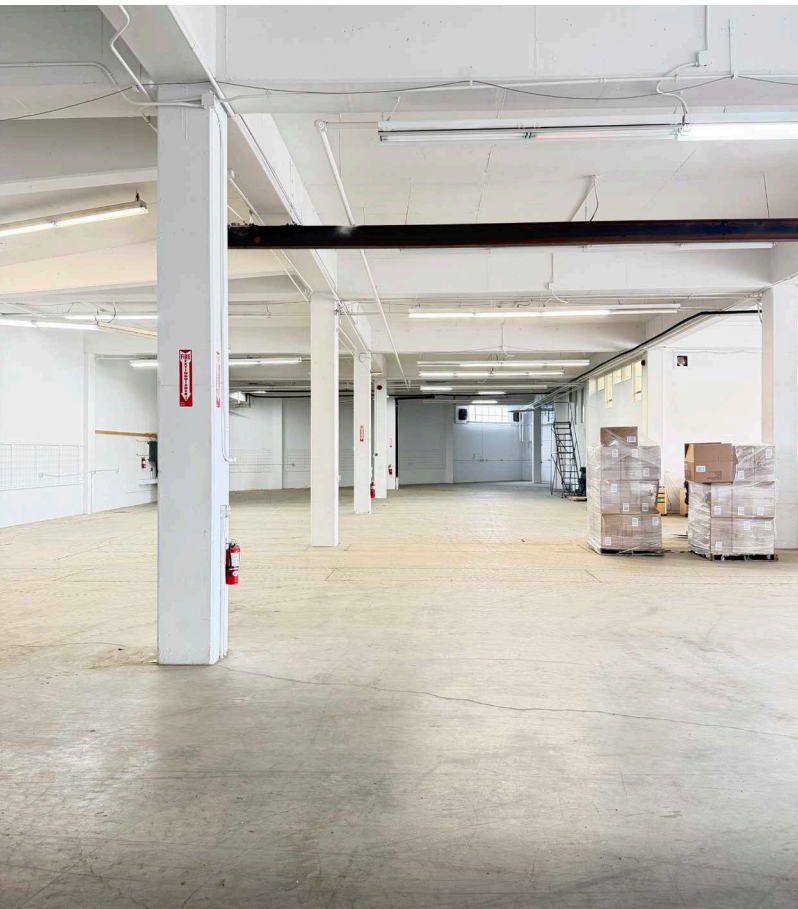
**MATTHEW HOPKINS**

Associate  
+1 425 586 5635  
mhopkins@nai-psp.com

**NAI** Puget Sound  
Properties

THE INFORMATION CONTAINED HEREIN HAS BEEN GIVEN TO US BY THE OWNER OF THE PROPERTY OR OTHER SOURCES WE DEEM RELIABLE. WE HAVE NO REASON TO DOUBT ITS ACCURACY, BUT WE DO NOT GUARANTEE IT. ALL INFORMATION SHOULD BE VERIFIED PRIOR TO PURCHASE OR LEASE.

[nai-psp.com](http://nai-psp.com)

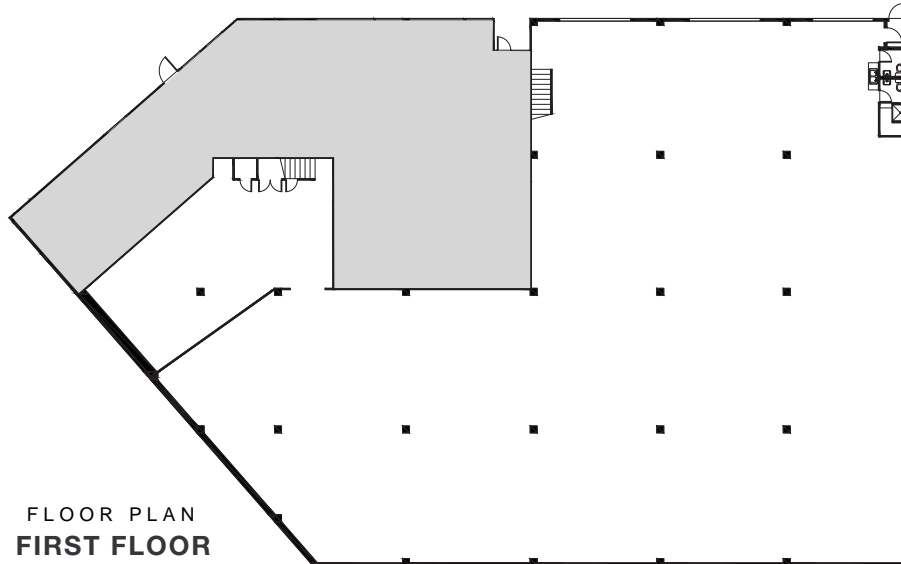


**BOB SWAIN, CCIM**  
Partner  
+1 206 794 0443  
bswain@nai-pp.com

**MATTHEW HOPKINS**  
Associate  
+1 425 586 5635  
mhopkins@nai-pp.com

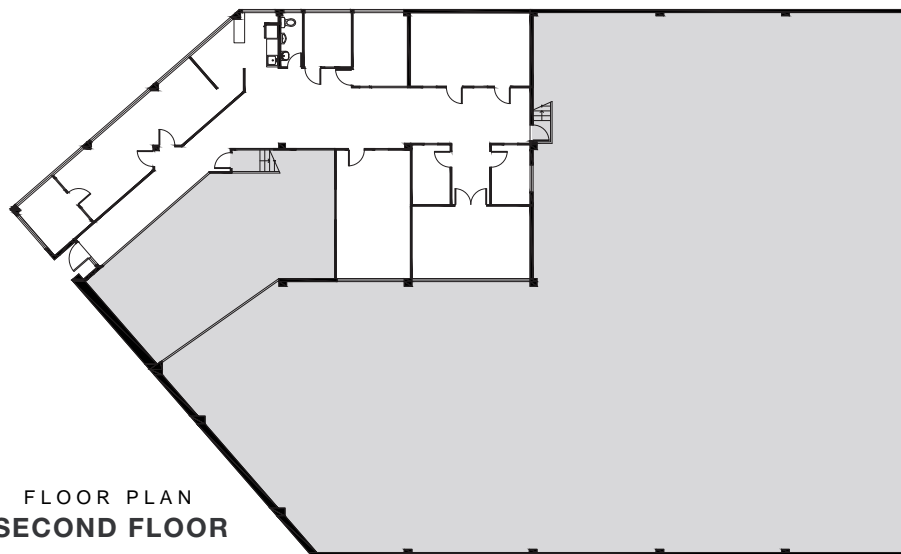


# Floor Plan



FLOOR PLAN  
FIRST FLOOR

This floor plan including furniture, fixture measurements and dimensions are approximate and for illustrative purposes only. BoxBrownie.com gives no guarantee, warranty or representation as to the accuracy and layout. All enquiries must be directed to the agent, vendor or party representing this floor plan.



FLOOR PLAN  
SECOND FLOOR

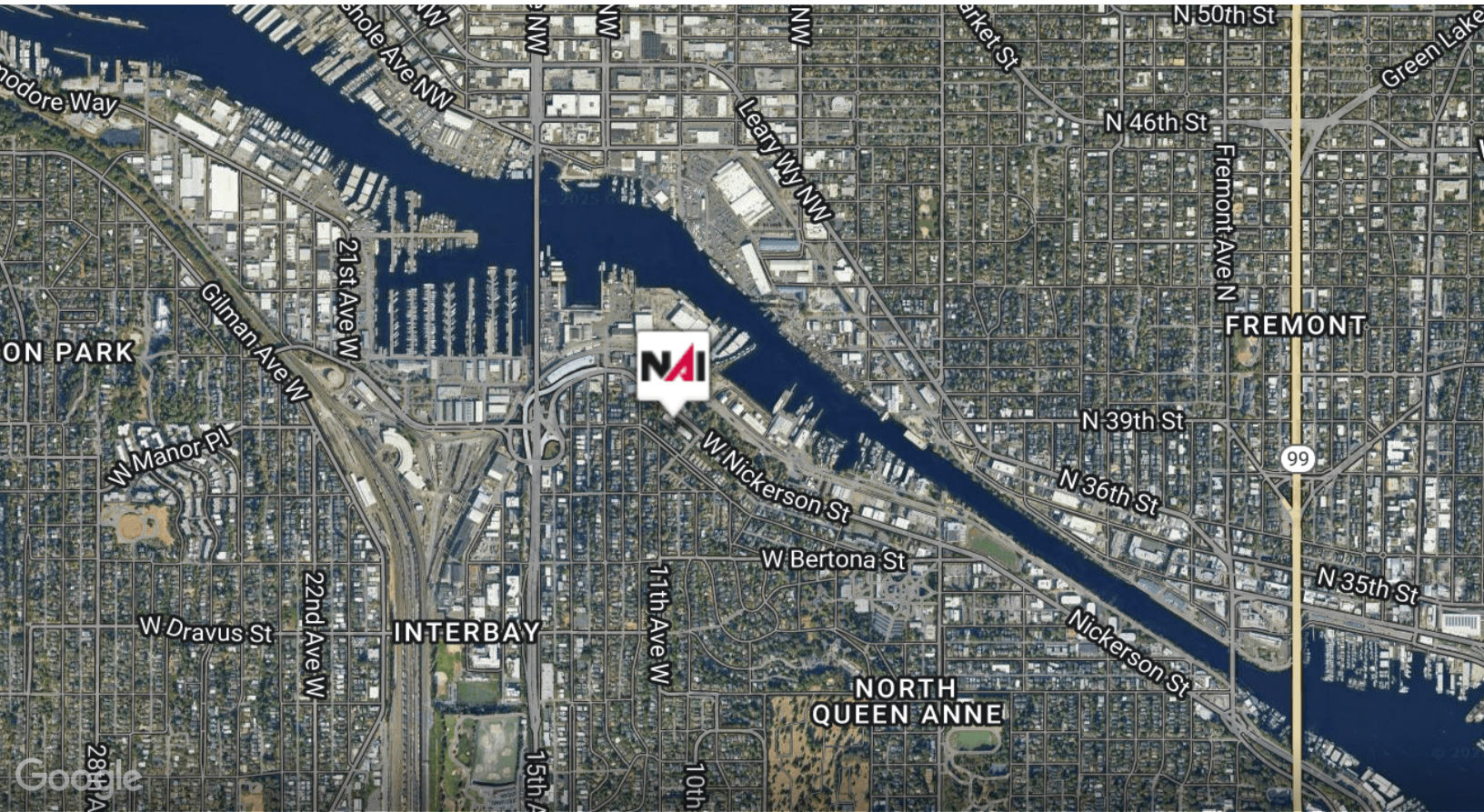
This floor plan including furniture, fixture measurements and dimensions are approximate and for illustrative purposes only. BoxBrownie.com gives no guarantee, warranty or representation as to the accuracy and layout. All enquiries must be directed to the agent, vendor or party representing this floor plan.

**BOB SWAIN, CCIM**  
Partner  
+1 206 794 0443  
bswain@nai-pp.com

**MATTHEW HOPKINS**  
Associate  
+1 425 586 5635  
mhopkins@nai-pp.com



Warehouse space for  
sublease in Interbay.



**BOB SWAIN, CCIM**  
Partner  
+1 206 794 0443  
bswain@nai-psp.com

**MATTHEW HOPKINS**  
Associate  
+1 425 586 5635  
mhopkins@nai-psp.com

