

# Beacon Ready



1100 Olive Way &  
1730 Minor Avenue  
Seattle WA 98101

 **MetPark**



# Ready when you are

MetPark's entire 9th floor has been transformed into a brand-new collection of ready to occupy suites. The perfect mix of private space and common & amenity areas, this ready-to-go suite program is an unbeatable value in the heart of Seattle.

Available Now

---

Flexible lease terms

---

Zoom/teams enabled conference rooms

---

Private, individual suites ranging from 2,700–5,800 SF

---

Quick, short-form license agreements

---

Fully furnished with wi-fi

---

No hassle move-in

---

All-inclusive pricing

---

Easy payment options including credit card



# At the intersection of live, work and play

Locate your business at the confluence of Seattle's defining commercial, residential and retail neighborhoods—from the Central Business District to Pike Place, South Lake Union and Capitol Hill.

---

Easy access to I-5 and express lanes, cutting down commute times

---

Walkable to supreme shopping, artisan restaurants, cafés, and historic theaters

---

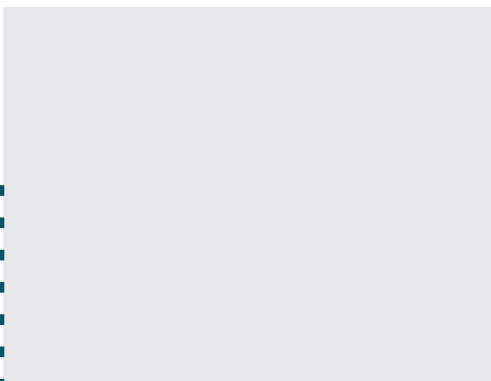
Experience 4 of Seattle's neighborhoods

---

Walk score of 99 in close proximity to local public transportation

---

Surrounded by multiple new apartment buildings and condominiums

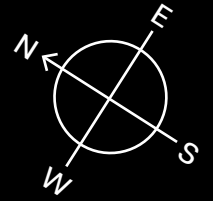
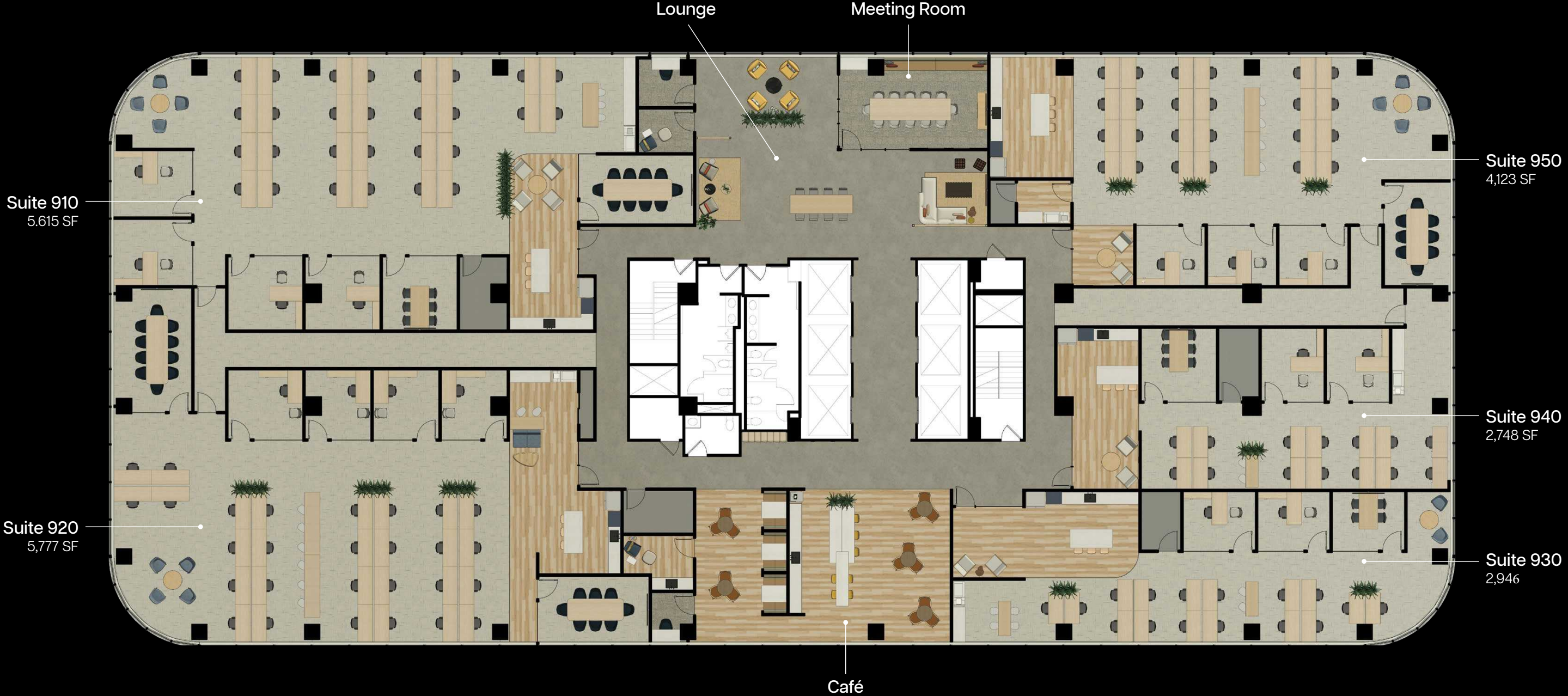




Lounge, café and meeting Spaces



# 9th Floor Beacon Ready Floor Plan





# Suite 910

Conference Rooms: 2

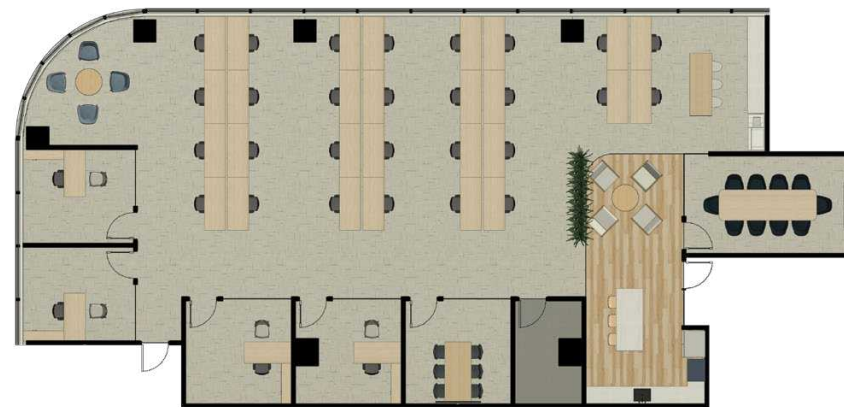
Workstations: 28

Private Kitchen: 1

Private Offices: 4

Open Collaboration Areas: 3

Storage Closet: 1



# Suite 920

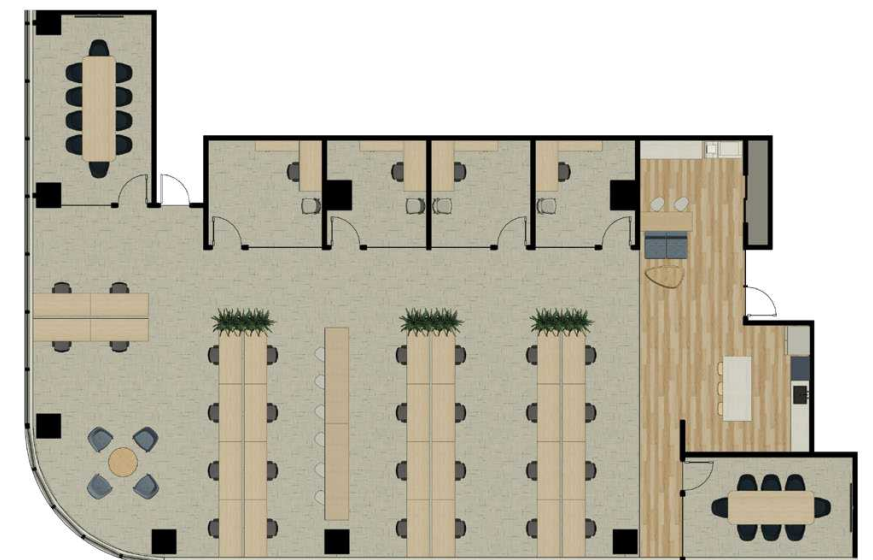
Conference Rooms: 2

Workstations: 28

Private Kitchen: 1

Private Offices: 4

Open Collaboration Areas: 2





# Suite 930

- Conference Rooms: 1

---

- Workstations: 16

---

- Private Kitchen: 1

---

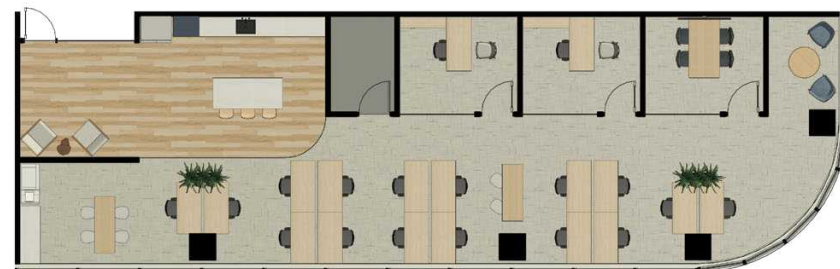
- Private Offices: 2

---

- Open Collaboration Areas: 3

---

- Storage Closet: 1



LEASED

# Suite 940

- Conference Rooms: 1

---

- Workstations: 14

---

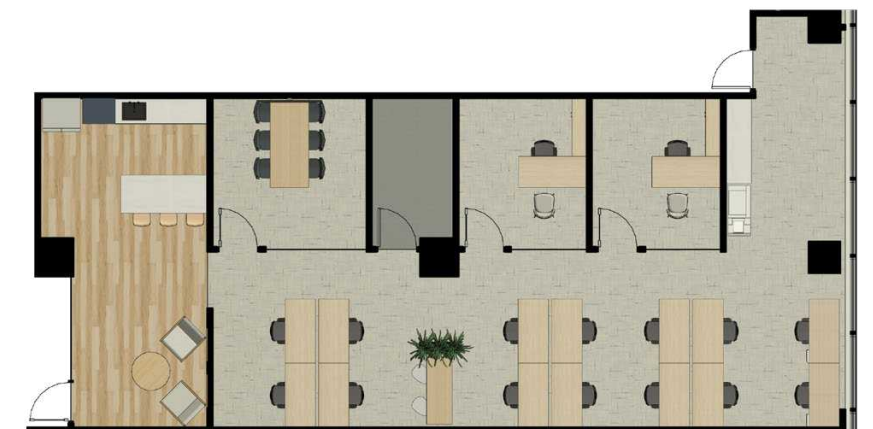
- Private Kitchen: 1

---

- Private Offices: 2

---

- Open Collaboration Areas: 1





# Enjoy all MetPark has to offer

Beacon Ready suites include full access to MetPark's best-in-class amenities designed to create a space-work-play environment.

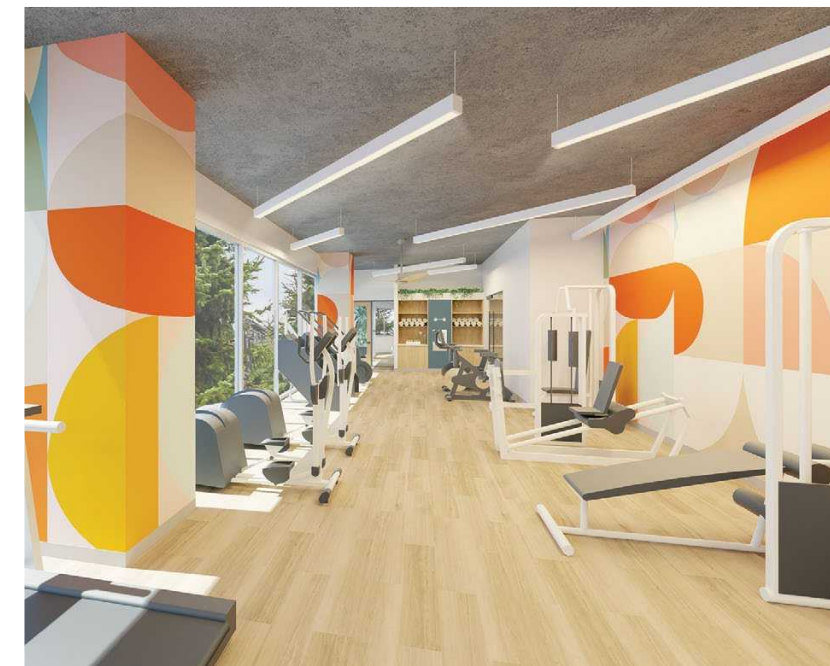
The Met Club with meeting spaces and catering kitchen

New gym and yoga studio with spa-inspired showers and locker room

New tenant lounge with outdoor meeting and gathering spaces

An ever-changing array of on-site dining options with rotating food trucks

Open green spaces invite community and collaboration



## Suite 950

## LEASED

Conference Rooms: 1

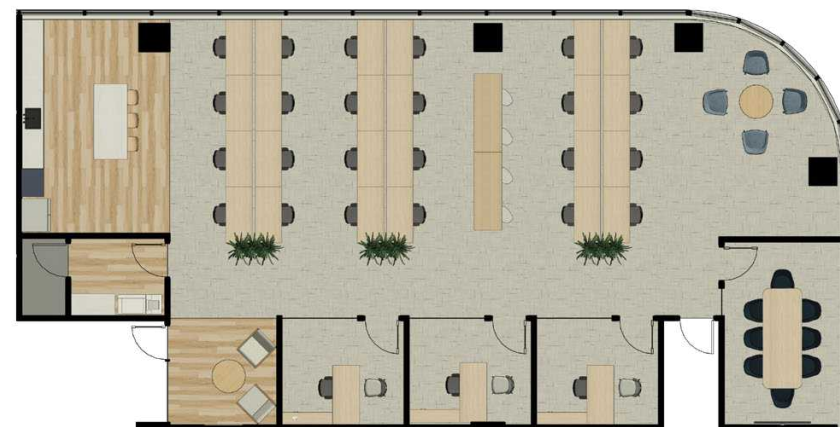
Workstations: 24

Private Kitchen: 1

Private Offices: 3

Open Collaboration Areas: 2

Storage Closet: 1



# Superior access

MetPark enjoys one of the most convenient locations in the city with easy access to I-5 and express lanes, transit centers and walkable residential neighborhoods. And, MetPark features a free shuttle so our tenants can easily reach other destinations across the city!

Transit Score

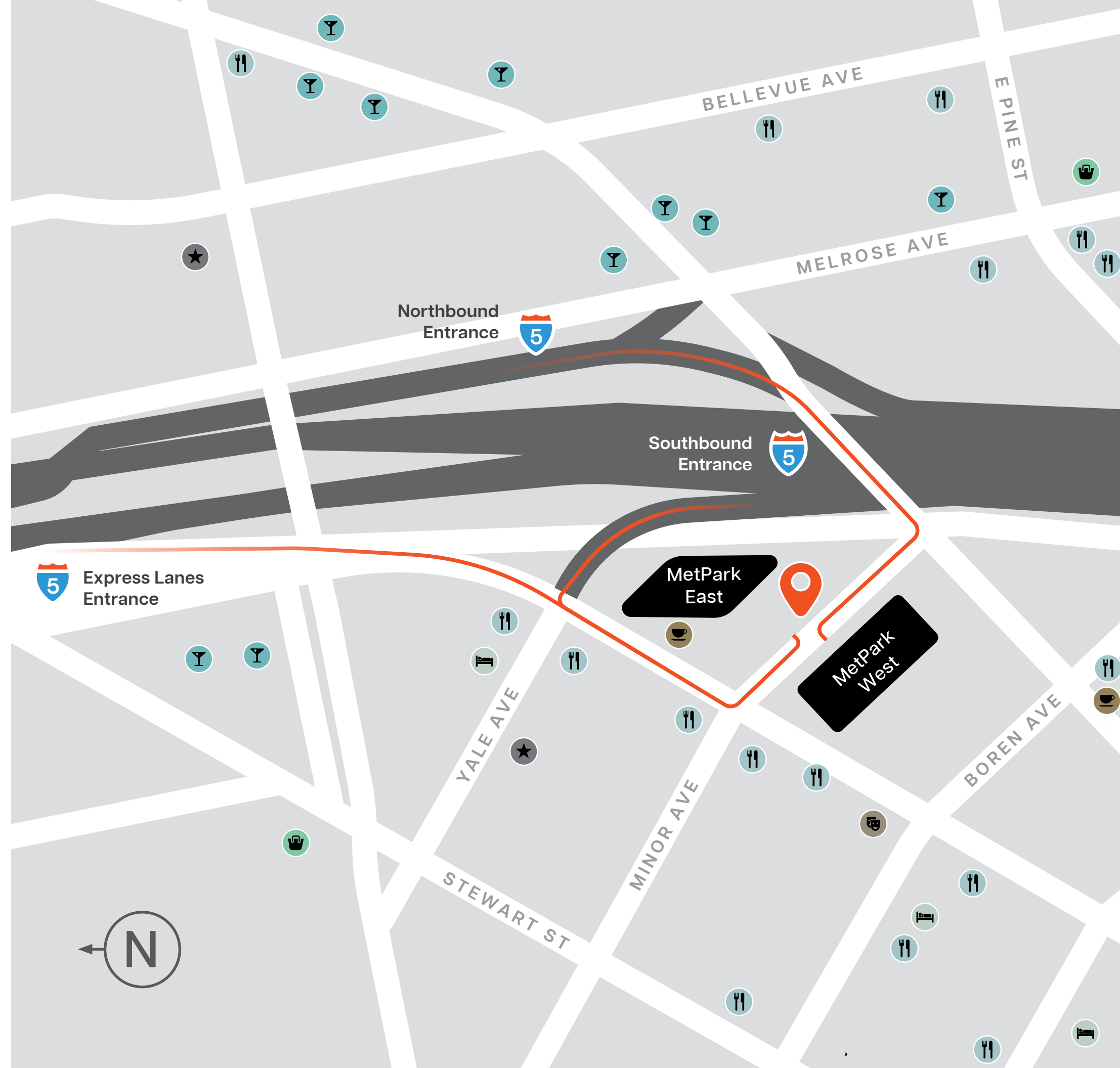
100

Walk Score

99

Garage-to-Freeway:

3 min



- Drinks
- Shopping
- Hotel
- Coffee
- Food
- Entertainment
- Services

75 years

of successful real estate  
development, ownership, and  
management



100+

real estate professionals



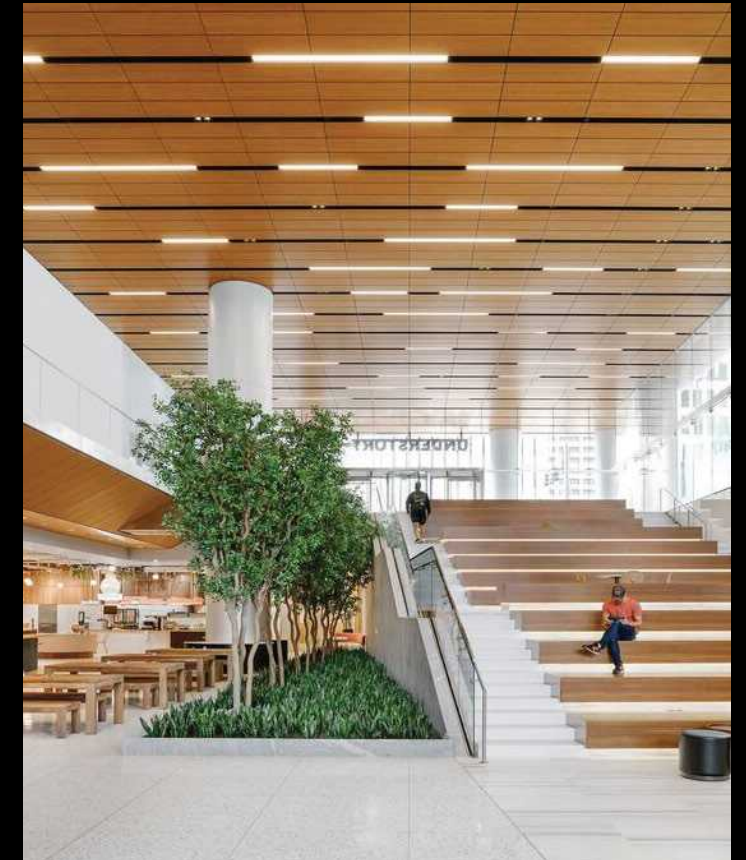
\$19B+

raised in equity since 1998  
from a diverse investor group



55M

square feet of LEED  
certifications since 2009





# BEACON

Beacon Capital Partners is a tenant-focused private real estate investment firm with a 75-year legacy of successful real estate development, ownership, and management.

For more information:  
[www.beaconcapital.com](http://www.beaconcapital.com)



[Larry Almeleh](#) | 206.910.0859  
[almeleh@broderickgroup.com](mailto:almeleh@broderickgroup.com)

[Lauren Hallgrimson](#) | 206.948.4440  
[hallgrimson@broderickgroup.com](mailto:hallgrimson@broderickgroup.com)