

SODO - 6th & Lander

2450 6th Ave S., Suite 302

Seattle, WA 98134



FOR LEASE

Professional Office

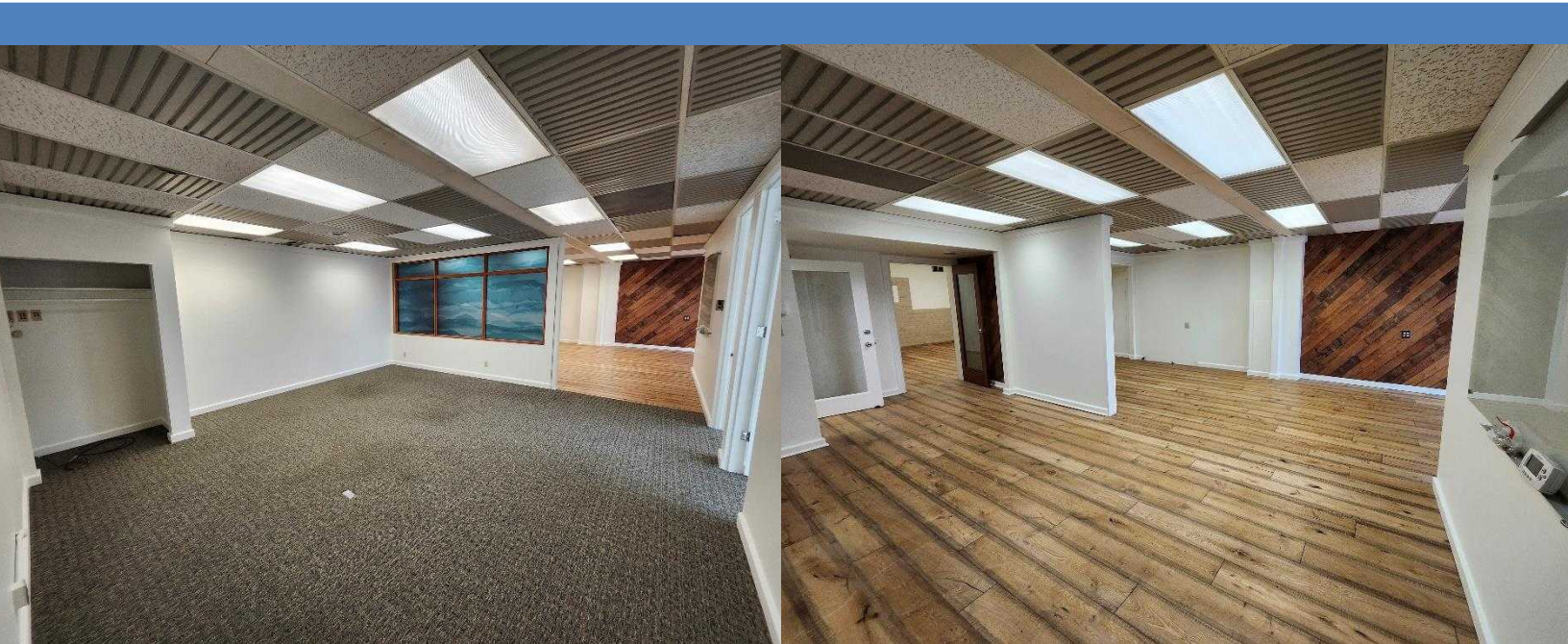
CONTACT:

MARK TEMMEL
(206) 307-5726
mark@temmelre.com
Temmel Real Estate

SPACE DETAILS

Located one block from the SODO light rail station, this 2,760 SF move-in ready professional office or creative workspace is available now. Suite 302 has three private offices, tons of open co-working space, a conference room and a reception area. The space can be demised to 1,118 SF which is all of the wood vinyl flooring in the pictures. Asking rate of \$15/sq.ft. + NNN (\$6.36/SF). NNN charges include utilities and in-suite janitorial 3x a week. There is free street parking in front of the building. Easy access to I-5, Hwy 99 and I-90.

[VIDEO TOUR](#)



Square Feet	1,118 - 2,760 (BOMA)
Base Rent	\$15/SF
NNN	\$6.36/SF
Available	Now
Suite	302

