

## HALL CREEK OFFICE PARK

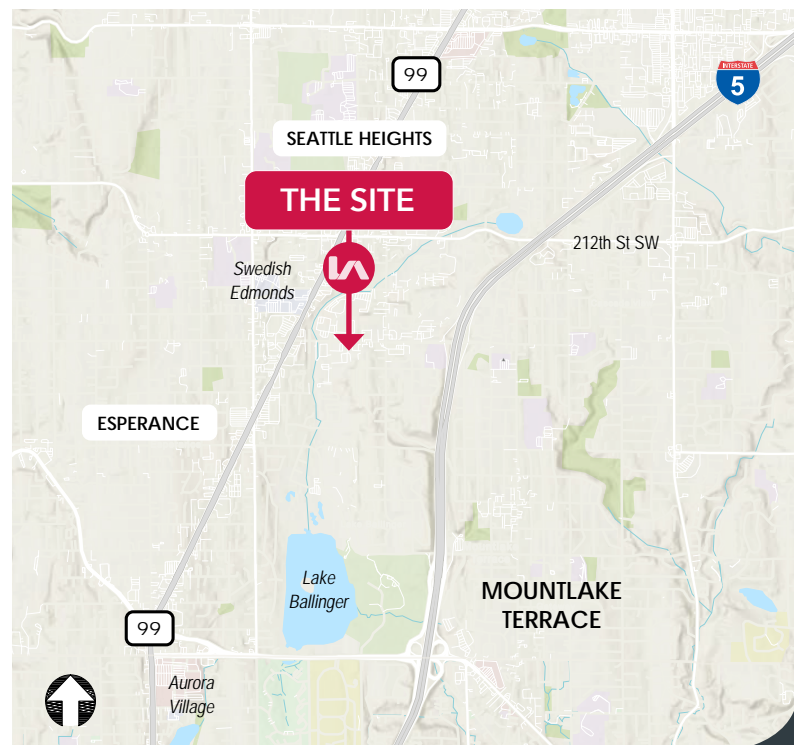


SUITE	SIZE	LEASE RATE	AVAILABILITY
200:	2,201 SF	\$12 PSF, NNN	Now
207:	2,776 SF	\$12 PSF, NNN	Now

### PROPERTY INFORMATION

Flexible space plan includes:

- » Local ownership & professional management
- » Ample parking
- » Conveniently located near I-5 and Highway 99
- » Fiber available
- » Recent major building upgrades
- » Three-story building
- » Lobbies on both the 1st and 2nd floors



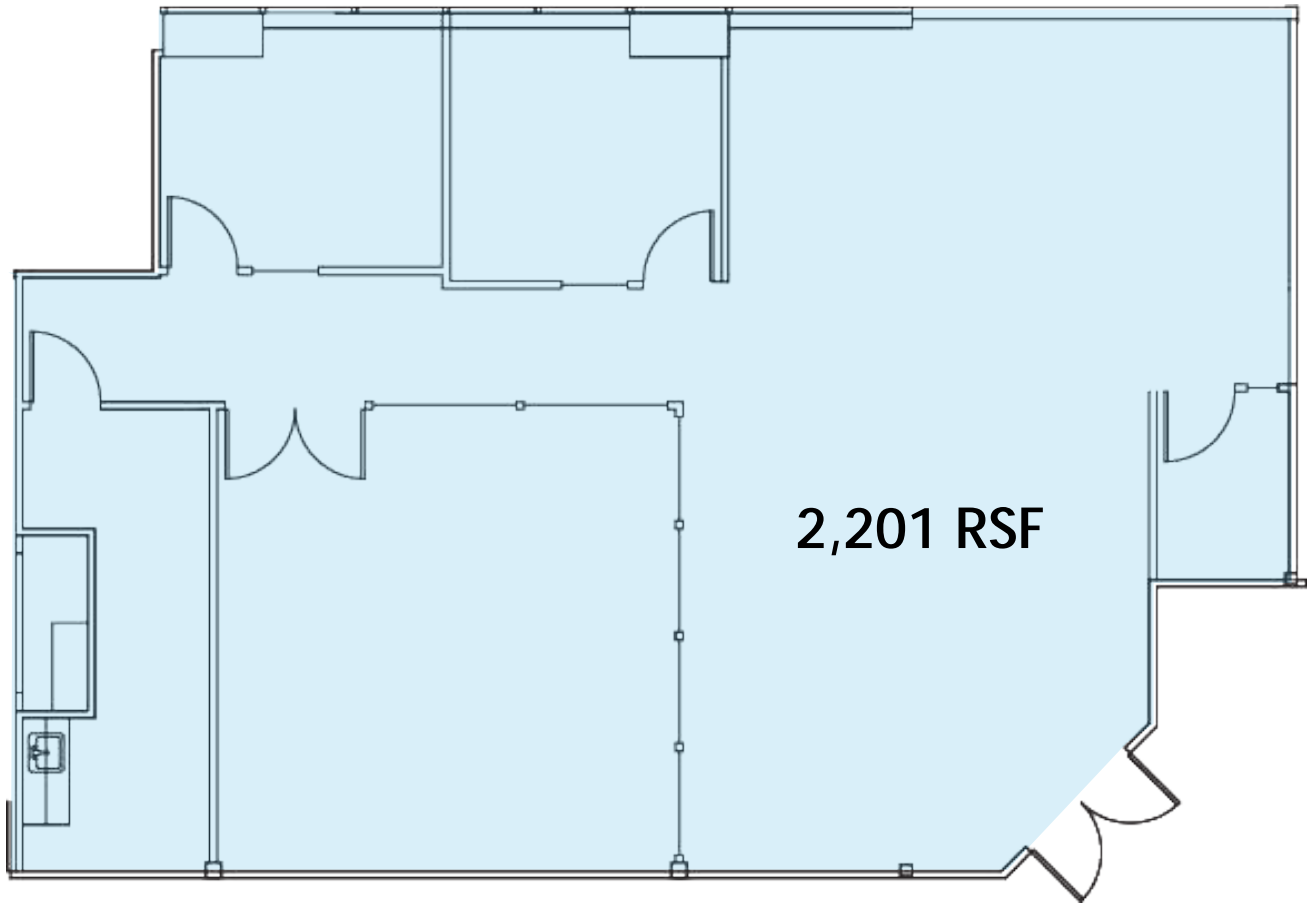
OFFICE FOR LEASE

# HALL CREEK OFFICE PARK

6912 220TH STREET SW, MOUNTLAKE TERRACE, WA 98043

**LEE &  
ASSOCIATES**  
COMMERCIAL REAL ESTATE SERVICES

**SUITE 200**



## CONTACT

**CHRIS PETERSON** SIOR, CCIM  
cpeterson@lee-associates.com  
D 206.773.2678

**RICHARD PETERSON**  
rpeterson@lee-associates.com  
D 206.773.2677

**RYAN ALEINIKOFF**  
ralienikoff@lee-associates.com  
D 425.818.2654

All information furnished regarding property for sale, rental or financing is from sources deemed reliable, but no warranty or representation is made to the accuracy thereof and same is submitted to errors, omissions, change of price, rental or other conditions prior to sale, lease or financing or withdrawal without notice. No liability of any kind is to be imposed on the broker herein.

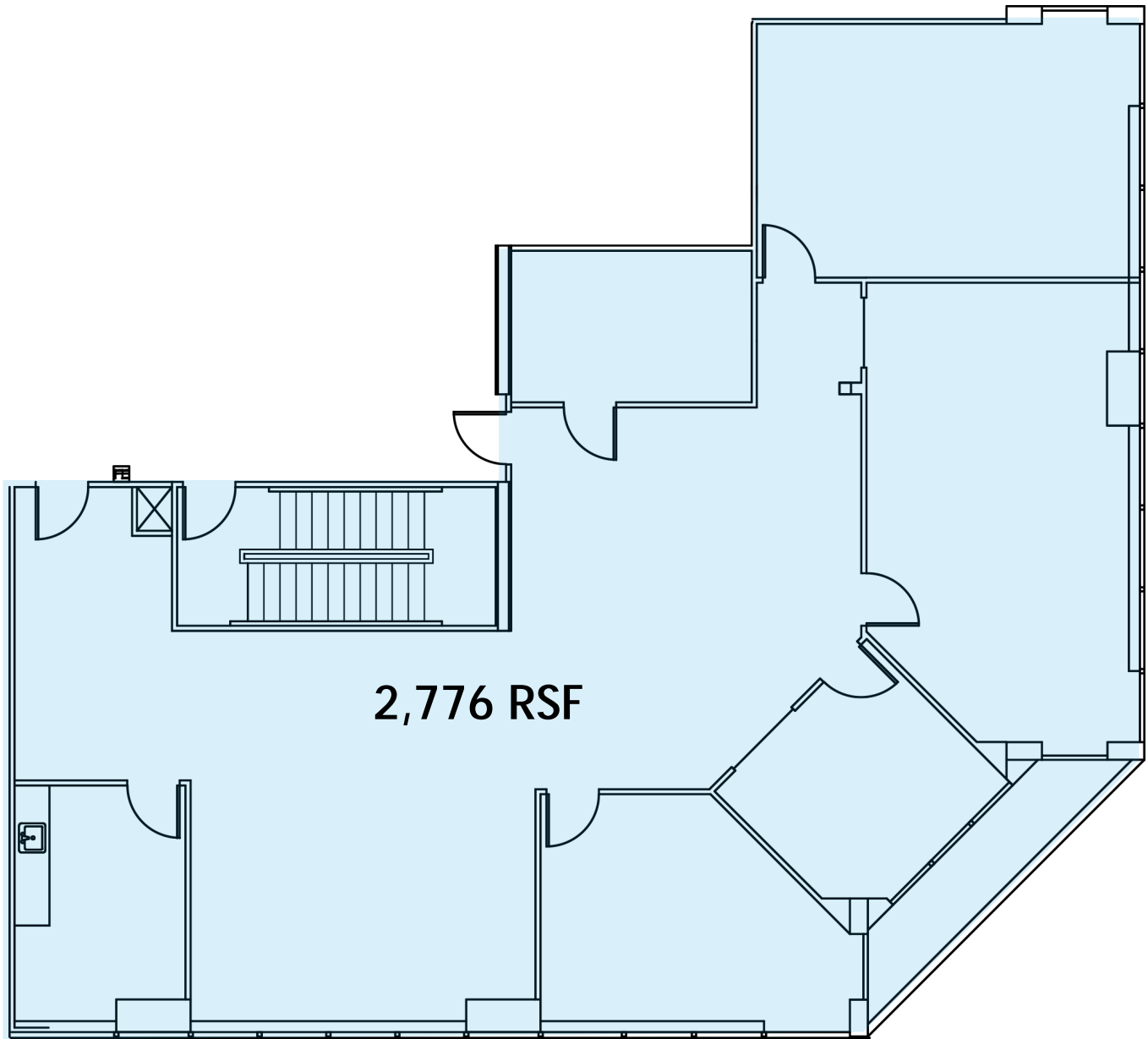
OFFICE FOR LEASE

# HALL CREEK OFFICE PARK

6912 220TH STREET SW, MOUNTLAKE TERRACE, WA 98043

**LEE &  
ASSOCIATES**  
COMMERCIAL REAL ESTATE SERVICES

**SUITE 207**



## CONTACT

**CHRIS PETERSON** SIOR, CCIM  
cpeterson@lee-associates.com  
D 206.773.2678

**RICHARD PETERSON**  
rpeterson@lee-associates.com  
D 206.773.2677

**RYAN ALEINIKOFF**  
ralienikoff@lee-associates.com  
D 425.818.2654

All information furnished regarding property for sale, rental or financing is from sources deemed reliable, but no warranty or representation is made to the accuracy thereof and same is submitted to errors, omissions, change of price, rental or other conditions prior to sale, lease or financing or withdrawal without notice. No liability of any kind is to be imposed on the broker herein.