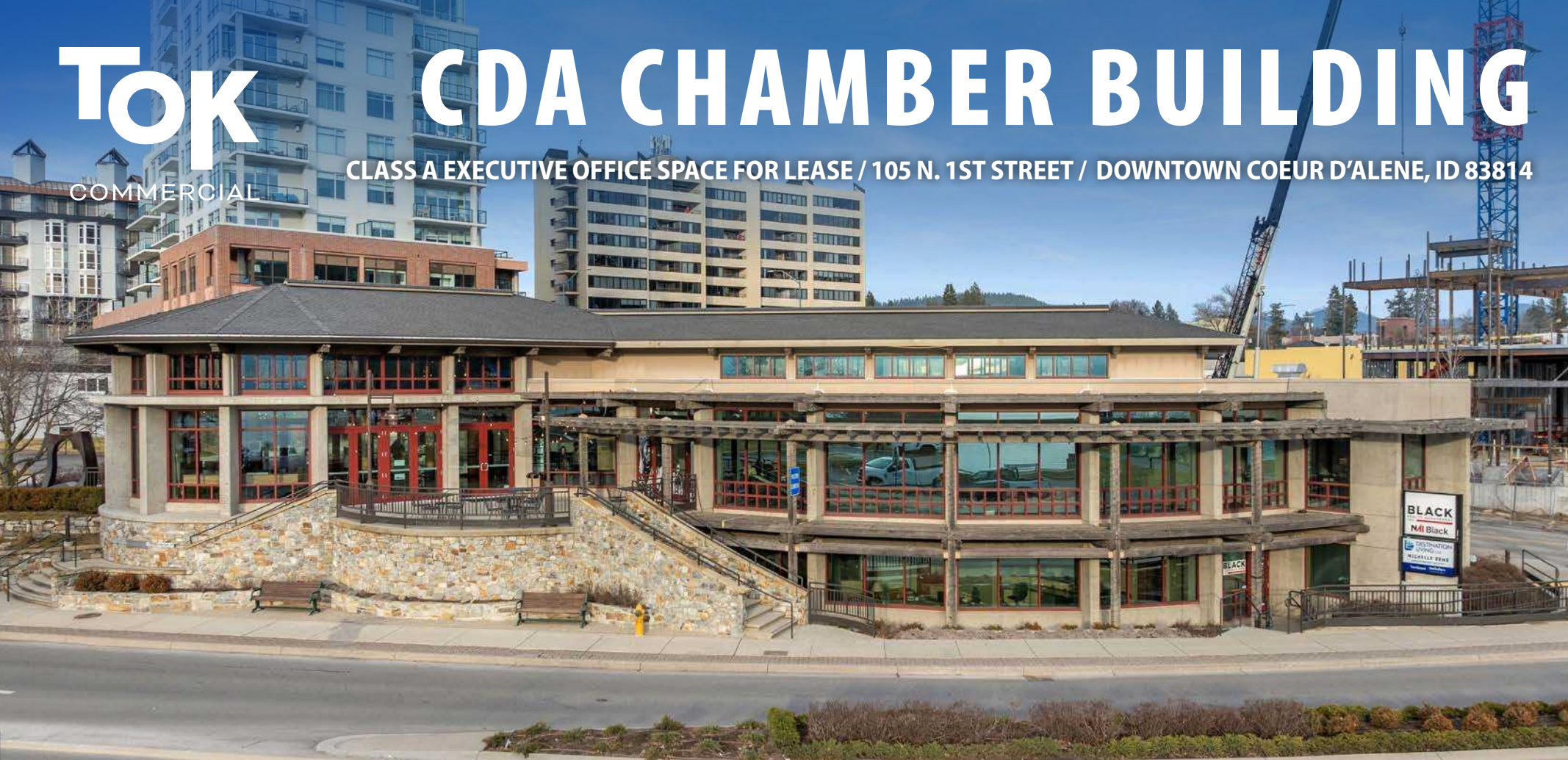


TOK

COMMERCIAL

CDA CHAMBER BUILDING

CLASS A EXECUTIVE OFFICE SPACE FOR LEASE / 105 N. 1ST STREET / DOWNTOWN COEUR D'ALENE, ID 83814



CONTACT

DANNY DAVIS, CCIM

208.691.6003

danny@tokcommercial.com

HIGHLIGHTS

Offering executive private offices, individual workstations, and suites up to 874SF.

Prime downtown Coeur d'Alene location directly on Sherman Avenue across the street from Lake Coeur d'Alene.

Walkable access to restaurants, retail, parks, beaches, and downtown services.

Networking opportunities to grow your business in the heart of the business community.

Office suites ideal for solo practitioners, small teams, and remote professionals.

DETAILS

SUBMARKET	Downtown CDA
BLDG SIZE	13,585 SF
SPACE AVAILABLE	See Pages 2 & 3
LEASE TYPE	Full Service
LEASE TERM	1 Year Minimum
AVAILABLE	Immediately

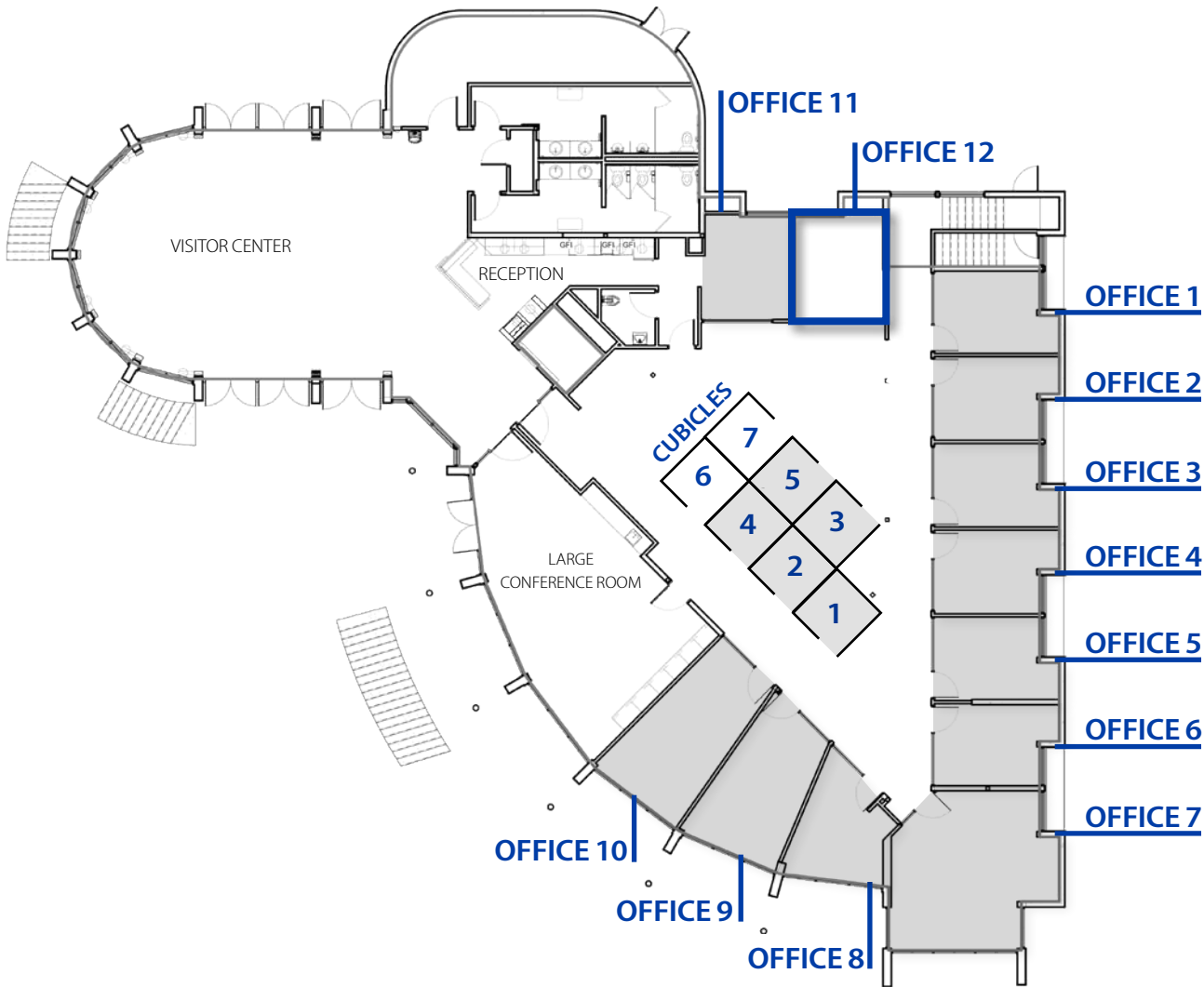
UPDATED: 4.14.2026

THIS PROPERTY IS EXCLUSIVELY MARKETED BY TOK BOISE LLC DBA TOK COMMERCIAL

This information was obtained from sources believed reliable but cannot be guaranteed. Any opinions or estimates are used for example only.

TOKCOMMERCIAL.COM

MAIN FLOOR

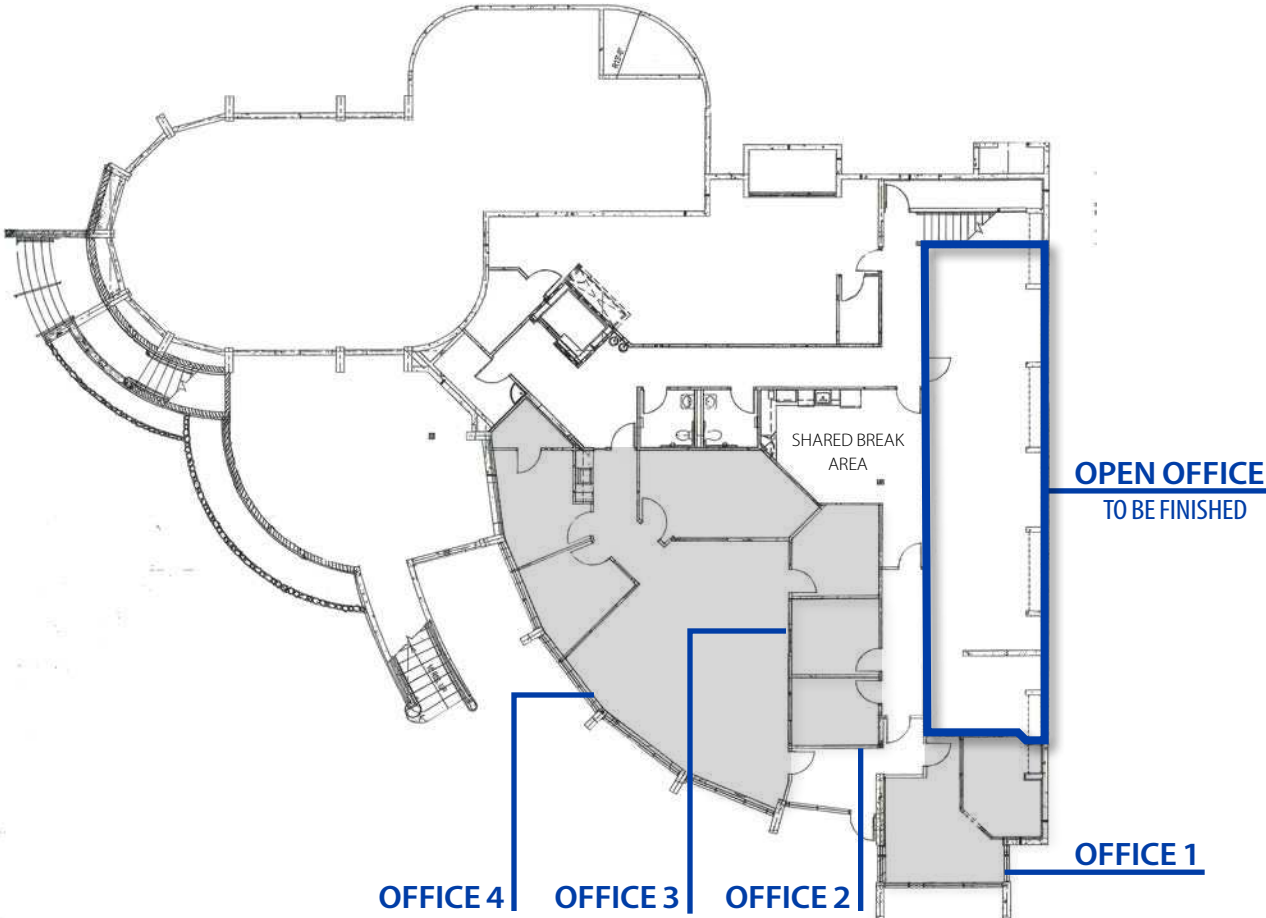


SPACE	SIZE	RATE
Office 1	120 SF	Marco Law Group
Office 2	120 SF	Growth Advisors & Tax Consultants
Office 3	120 SF	CDA Visitors and Convention Bureau
Office 4	120 SF	CDA Chamber
Office 5	120 SF	CDA Chamber
Office 6	120 SF	North Idaho Centennial Trials Foundation
Office 7	300 SF	CDA Chamber
Office 8	120 SF	CDA Downtown Association
Office 9	175 SF	Innova Foundation
Office 10	200 SF	Urban Renewal Agency
Office 11	150 SF	CDA Chamber
Office 12	146 SF	\$1,022/Mo
Cubicle 1	64 SF	CDA Chamber
Cubicle 2	63 SF	M+L Advisors
Cubicle 3	64 SF	CDA Downtown Association
Cubicle 4	63 SF	CDA Downtown Association
Cubicle 5	96 SF	CDA Downtown Association
Cubicle 6	96 SF	\$288/Mo
Cubicle 7	60 SF	\$180/Mo

DETAILS

UPDATED: 4.14.2026
 THIS PROPERTY IS EXCLUSIVELY MARKETED BY TOK BOISE LLC DBA TOK COMMERCIAL
 This information was obtained from sources believed reliable but cannot be guaranteed. Any opinions or estimates are used for example only.

LOWER LEVEL

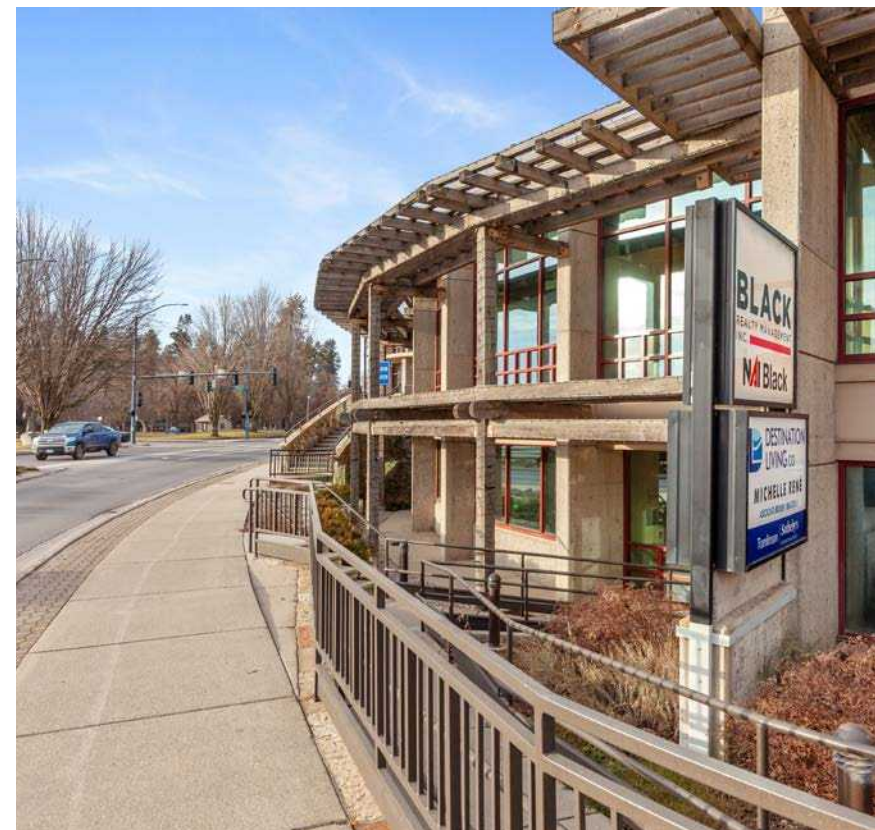


DETAILS

SPACE	SIZE	RATE
Office 1 (Lower Level)	316 SF	Lake City CDA Real Estate
Office 2 (Lower Level)	96 SF	Swoop Scoop
Office 3 (Lower Level)	106 SF	Swoop Scoop
Office 4 (Lower Level)	1,407 SF	Swoop Scoop
Open Office (Lower Level)	874 SF	\$2,185/Mo



UPDATED: 4.14.2026
 THIS PROPERTY IS EXCLUSIVELY MARKETED BY TOK BOISE LLC DBA TOK COMMERCIAL
 This information was obtained from sources believed reliable but cannot be guaranteed. Any opinions or estimates are used for example only.



UPDATED: 4.14.2026

THIS PROPERTY IS EXCLUSIVELY MARKETED BY TOK BOISE LLC DBA TOK COMMERCIAL

This information was obtained from sources believed reliable but cannot be guaranteed. Any opinions or estimates are used for example only.

MAIN LEVEL



MAIN LEVEL - CUBICLE



MAIN LEVEL - CUBICLE



MAIN LEVEL - OFFICE SPACE



TOK
COMMERCIAL

UPDATED: 4.14.2026

THIS PROPERTY IS EXCLUSIVELY MARKETED BY TOK BOISE LLC DBA TOK COMMERCIAL

This information was obtained from sources believed reliable but cannot be guaranteed. Any opinions or estimates are used for example only.

TOKCOMMERCIAL.COM

MAIN LEVEL - OFFICE SPACE



MAIN LEVEL - RECEPTION



SHARED BREAK AREA



SHARED BREAK AREA



TOK
COMMERCIAL

UPDATED: 4.14.2026

THIS PROPERTY IS EXCLUSIVELY MARKETED BY TOK BOISE LLC DBA TOK COMMERCIAL
This information was obtained from sources believed reliable but cannot be guaranteed. Any opinions or estimates are used for example only.

TOKCOMMERCIAL.COM



COMPLETE TI BUILDOUT AVAILABLE | 874 SF
APPROVED TENANTS WITH 5 YEAR MINIMUM LEASE - CONTACT AGENT FOR MORE DETAILS

UPDATED: 4.14.2026

THIS PROPERTY IS EXCLUSIVELY MARKETED BY TOK BOISE LLC DBA TOK COMMERCIAL

This information was obtained from sources believed reliable but cannot be guaranteed. Any opinions or estimates are used for example only.



UPDATED: 4.14.2026

THIS PROPERTY IS EXCLUSIVELY MARKETED BY TOK BOISE LLC DBA TOK COMMERCIAL

This information was obtained from sources believed reliable but cannot be guaranteed. Any opinions or estimates are used for example only.

TOKCOMMERCIAL.COM



LAKE COEUR D'ALENE

SHERMAN AVE

COEUR D'ALENE AVE

SITE

18,749 VPD

CITY PARK

NORTHWEST BLVD

TOK COMMERCIAL

UPDATED: 4.14.2026
THIS PROPERTY IS EXCLUSIVELY MARKETED BY TOK BOISE LLC DBA TOK COMMERCIAL
This information was obtained from sources believed reliable but cannot be guaranteed. Any opinions or estimates are used for example only.

TOKCOMMERCIAL.COM

AERIAL MAP

EASY ACCESS TO MAJOR ARTERIALS



1 MILE RADIUS



POPULATION
7,570
1 MI. RADIUS



HISTORIC ANN. GROWTH
0.3%
1 MI. RADIUS



AVG. HOUSEHOLD INC.
\$104,453
1 MI. RADIUS

3 MILE RADIUS



POPULATION
32,857
3 MI. RADIUS



HISTORIC ANN. GROWTH
1.1%
3 MI. RADIUS



AVG. HOUSEHOLD INC.
\$96,265
3 MI. RADIUS

5 MILE RADIUS



POPULATION
63,497
5 MI. RADIUS



HISTORIC ANN. GROWTH
1.9%
5 MI. RADIUS



AVG. HOUSEHOLD INC.
\$106,137
5 MI. RADIUS