

FOR LEASE

2326


Airport Way S
Seattle, WA 98134

SODO Cross Dock
Last Mile | Port to Porch Transload






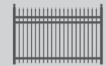
HIGHLIGHTS

 **LOT SIZE**
1.92 acres


 **BUILDING SIZE**
21,580 square foot cross-dock warehouse building (includes 7,769 SF office)

 **CEILING HEIGHT**
14' High Ceilings

 **LOADING**
32 loading positions
Newer dock locks on the 16 South facing docks

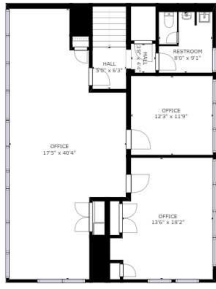
 **YARD**
1.25 acres of truck yard

 **LEASE RATE**
Call broker for rates

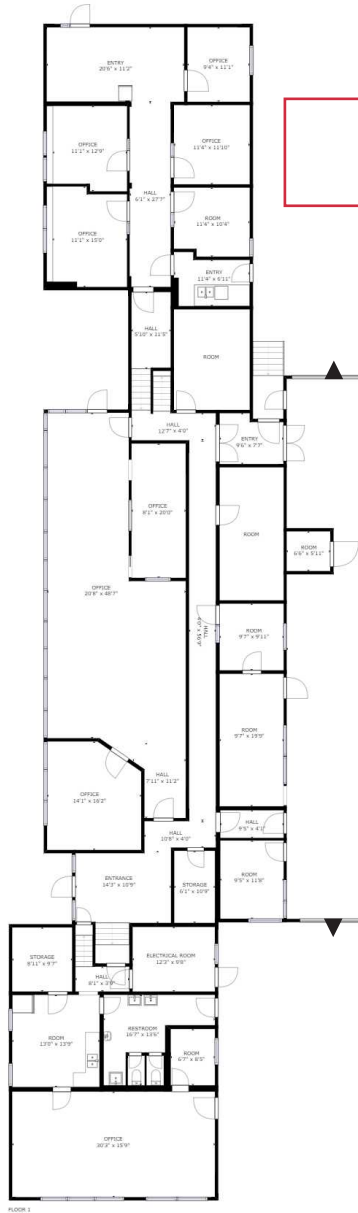
 **NOTES**
Port 1st Touch, E-Commerce Last Touch

FLOOR PLAN - 32 DH POSITIONS ON 1.92 ACRES

Second Floor Office
2,725 SF

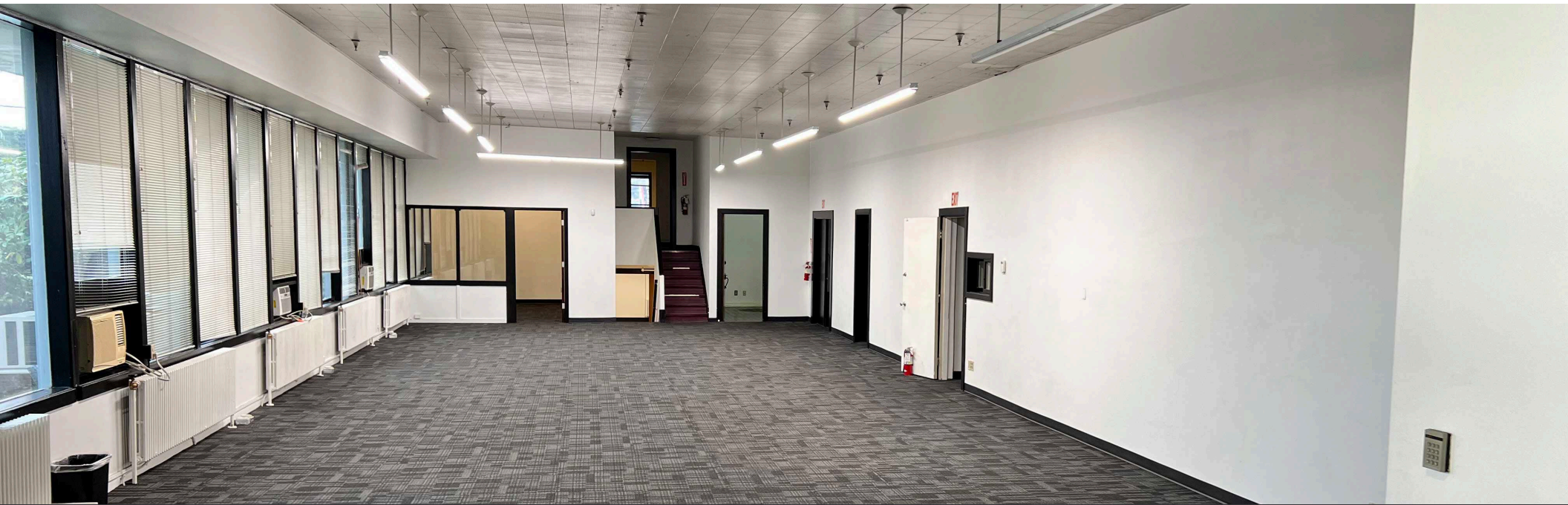
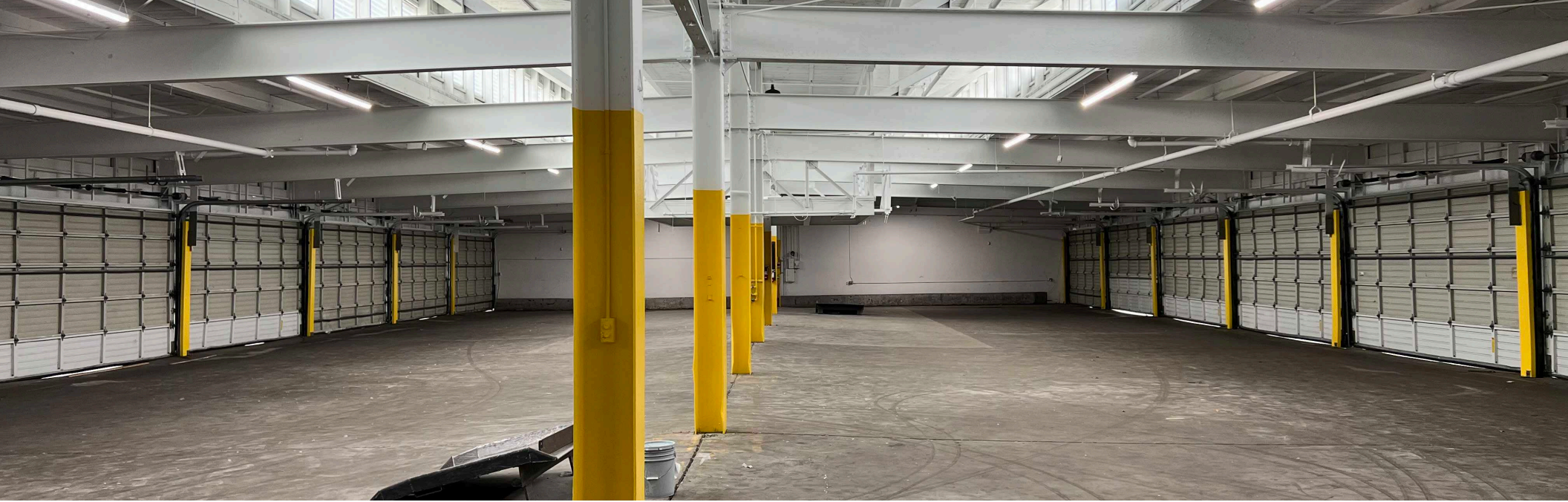


First Floor Office
5,044 SF



WAREHOUSE
13,580 SF

▼ 32 DH POSITIONS







LOCATION HIGHLIGHTS

- Intersection of e-commerce and port corridors
- Immediate proximity to port-corridors and major freeways
- Minutes from Downtown Seattle

DISTANCE

- 1 Mile:**
Port of Seattle
- 2 Miles:**
Downtown Seattle
- 12 Miles:**
Downtown Bellevue

DEMOGRAPHICS 5 MILES

-  **POPULATION**
423,509
-  **HOUSEHOLDS**
207,457

THE INFORMATION CONTAINED HEREIN HAS BEEN GIVEN TO US BY THE OWNER OF THE PROPERTY OR OTHER SOURCES WE DEEM RELIABLE. WE HAVE NO REASON TO DOUBT ITS ACCURACY, BUT WE DO NOT GUARANTEE IT. ALL INFORMATION SHOULD BE VERIFIED PRIOR TO PURCHASE OR LEASE. THIS BROKERS PRICE OPINION IS NOT AN APPRAISAL AS DEFINED IN CHAPTER 18.140 RCW AND HAS BEEN PREPARED BY A REAL ESTATE LICENSEE, LICENSED UNDER CHAPTER 18.85 RCW WHO IS NOT ALSO STATE CERTIFIED OR STATE LICENSED AS A REAL ESTATE APPRAISER UNDER 18.140 RCW. G:\SHARED DRIVES\ADMIN TEAM\MARKETING\PENDING FLYERS\2326 AIRPORT WAY S HS 031826

SODO CROSS DOCK

2326 Airport Way S
Seattle, WA 98134

EXCLUSIVELY MARKETING BY:

HANS SWENSON

NAI PUGET SOUND PROPERTIES
+1 425 586 5630
hswenson@nai-psp.com

JOHN VERNON

NAI PUGET SOUND PROPERTIES
+1 425 586 5638
jvernon@nai-psp.com

BOB SWAIN

NAI PUGET SOUND PROPERTIES
+1 425 586 5622
bswain@nai-psp.com

ANDREW KEMMERER

BURR & TEMPKIN
+1 425 281 3646
akemmerer@burrtemkin.com

GARETT HALL

BURR & TEMPKIN
+1 360 259 8790
ghall@burrtemkin.com

