

FOR LEASE

STB BUILDING C

23400 71ST PL S, KENT, WA 98032

*Class A New Construction
73,060 SF Industrial Building with Ample Power
in Prime Kent Location*

MATT MURRAY, SIOR
Executive Vice President
206.248.6541
matt.murray@kidder.com

MATT MCLENNAN, SIOR, CCIM
Executive Vice President
253.722.1458
matt.mclennan@kidder.com

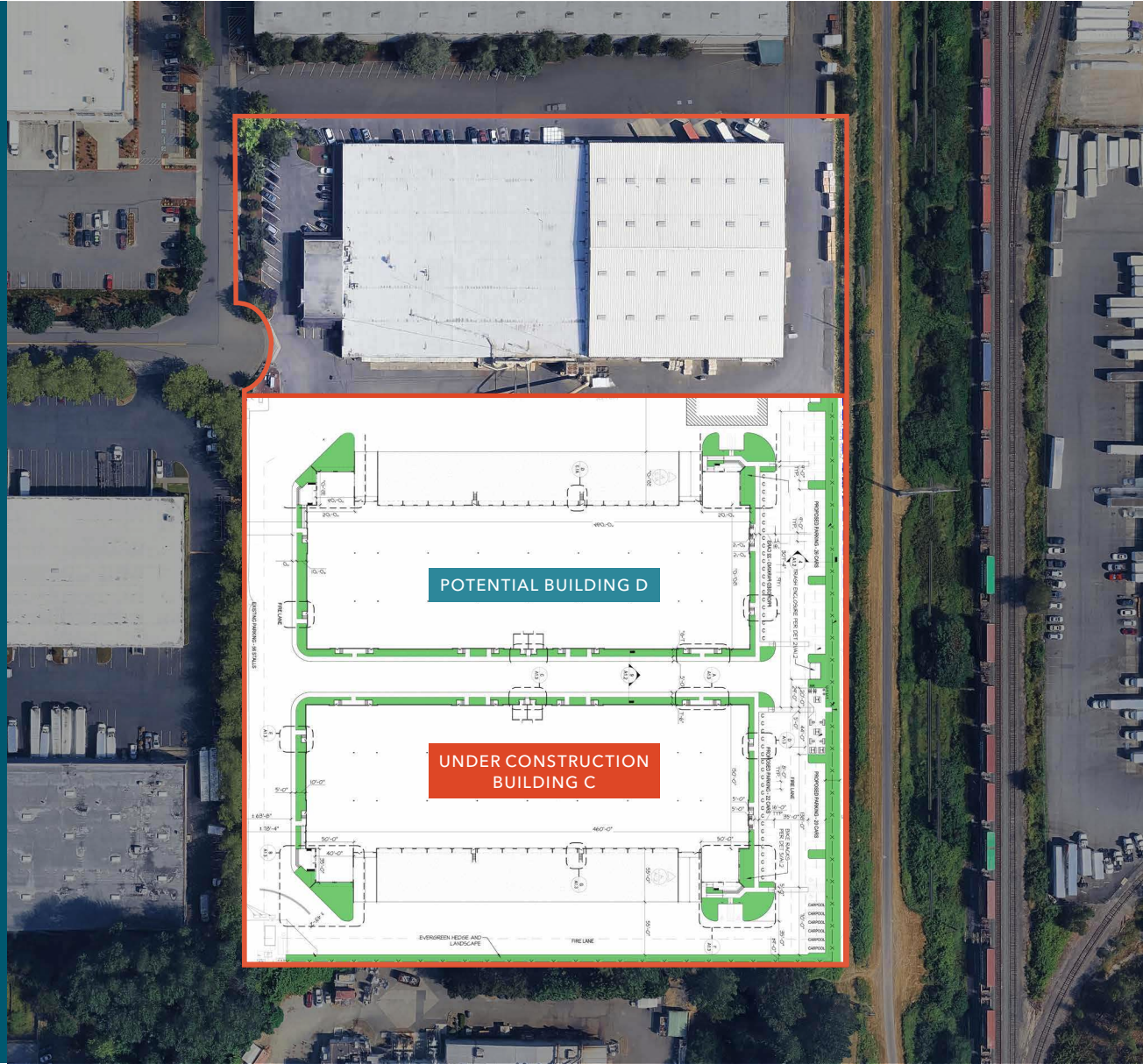
KIDDER.COM

 **Kidder
Mathews**

PROPERTY OVERVIEW

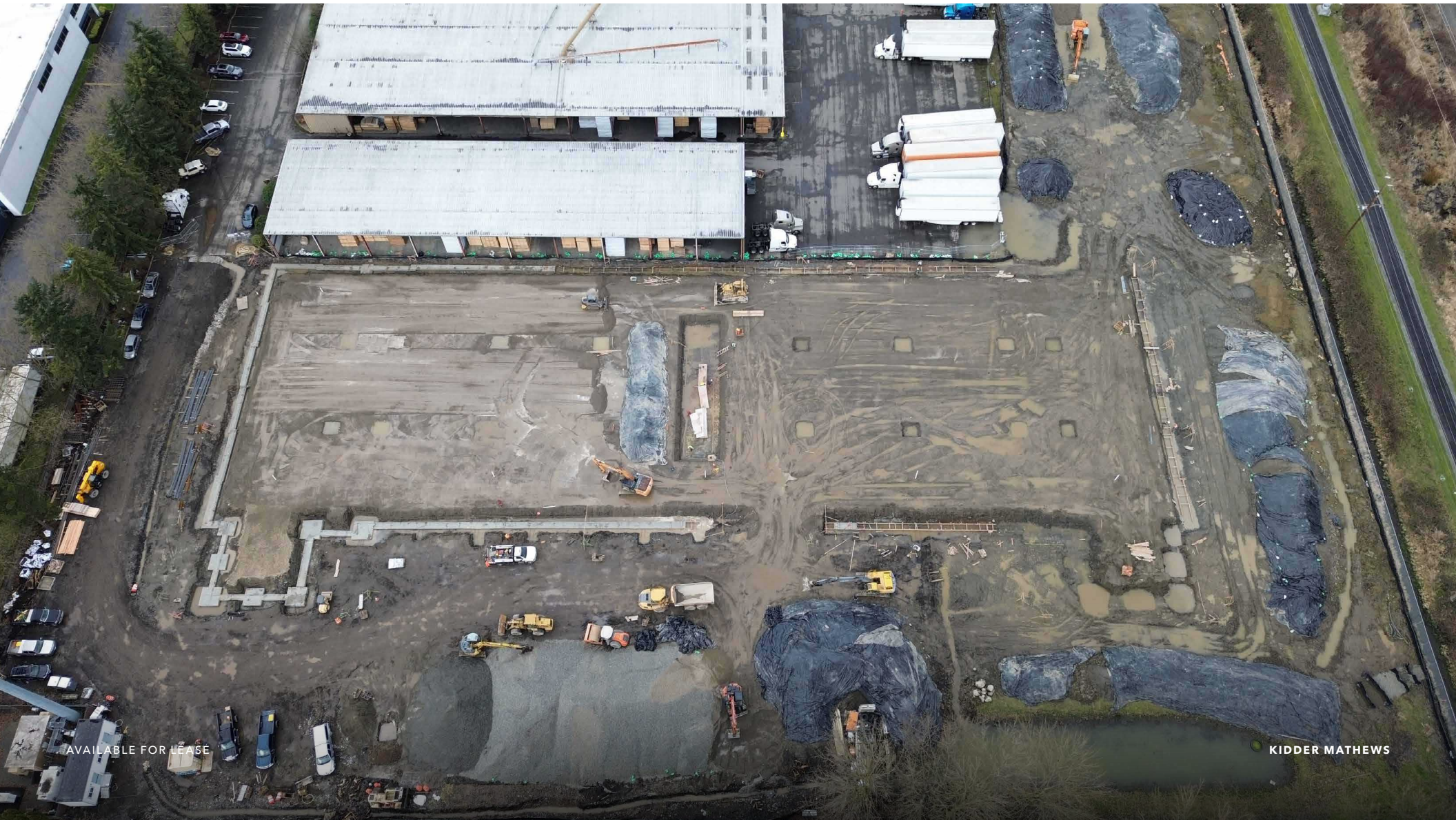
BUILDING SIZE	73,060 SF
OFFICE SIZE	3,900 SF BTS
CLEAR HEIGHT	32'
COLUMN SPACING	50' x 52' typical
TRUCK ACCESS	22 DH, 2 GL
POWER	3,000 AMP
JURISDICTION	City of Kent
ZONING	I2 - Mixed Industrial → ZONING MAP → ZONING USE TABLE
APN	132204-9193

→ RENDERINGS

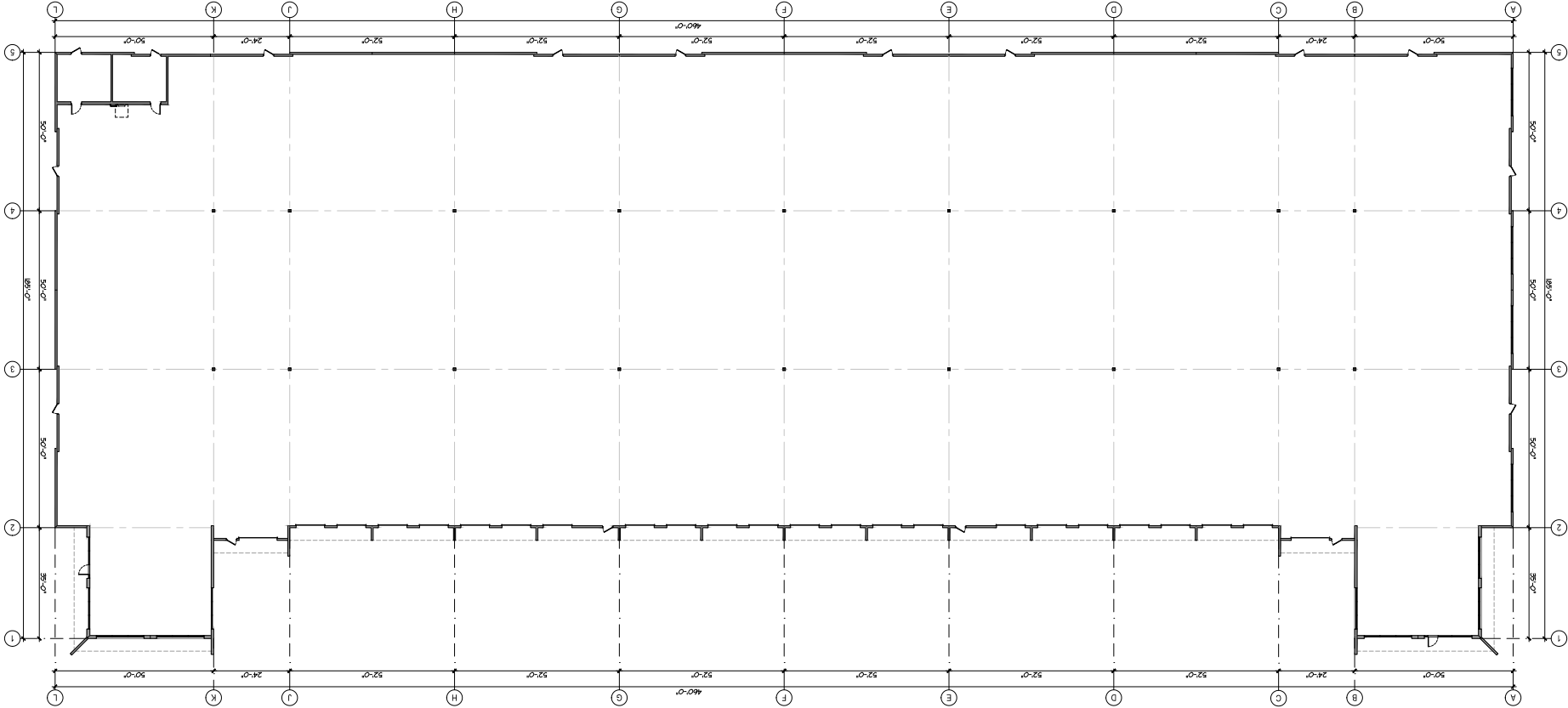




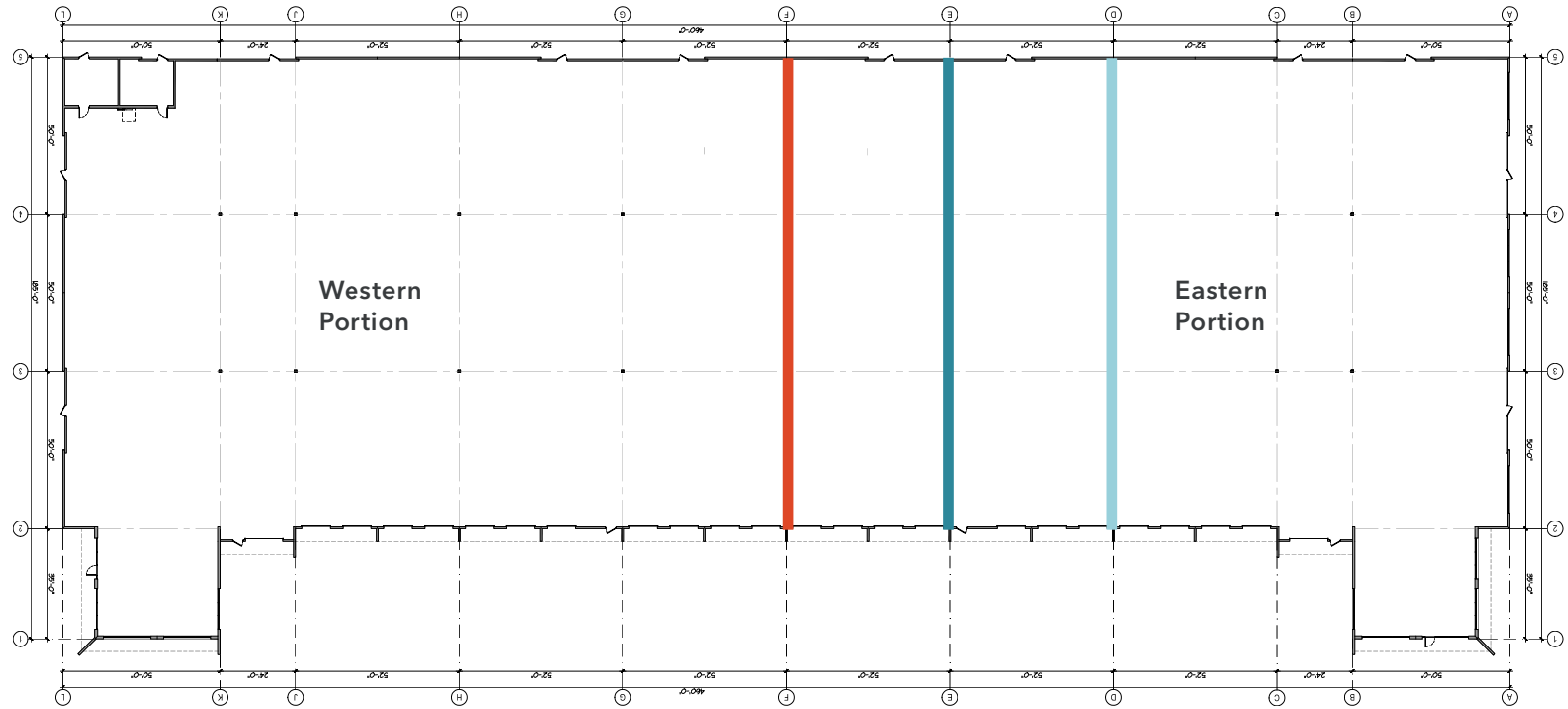
CONSTRUCTION STATUS – *MARCH 2026* ESTIMATED DELIVERY – *Q4 2026*






BUILDING PLAN



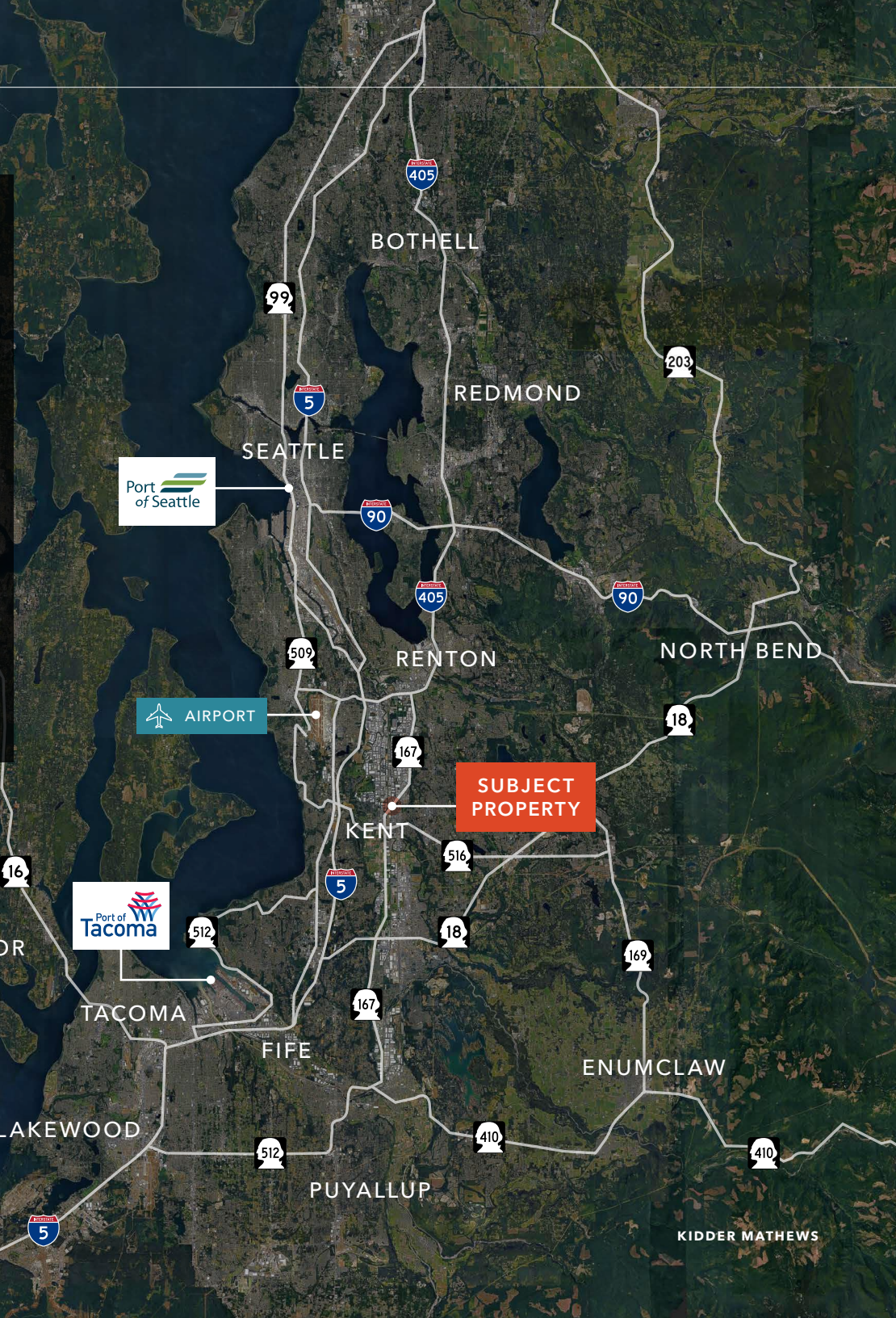
DEMISING OPTIONS



	DEMISE @ GRID	EASTERN PORTION (SF)	DOCK POSITIONS	WESTERN PORTION (SF)	DOCK POSITIONS	TOTAL (SF)
	D	20,710 SF	2	52,350 SF	10	73,060 SF
	E	28,759 SF	4	44,301 SF	8	73,060 SF
	F	36,812 SF	6	36,248 SF	6	73,060 SF

BUILDING C DELIVERS A MODERN DISTRIBUTION SOLUTION IN THE *HEART OF THE KENT VALLEY*

Offering unmatched proximity to SR-167, I-5, and the region's major freight corridors. Its location provides direct access to Seattle, the Port network, and the broader Puget Sound consumer base, making it ideal for regional or last-mile operations. Designed with Class-A functionality, ample power, efficient loading, and optimized site circulation, the project supports both high-volume throughput and modern operational needs. Construction is targeted for 2026, offering tenants a rare opportunity to secure brand-new space in one of the tightest industrial markets on the West Coast.





Exclusively listed by

MATT MURRAY, SIOR
Executive Vice President
206.248.6541
matt.murray@kidder.com

MATT MCLENNAN, SIOR, CCIM
Executive Vice President
253.722.1458
matt.mclennan@kidder.com

KIDDER.COM

This information supplied herein is from sources we deem reliable. It is provided without any representation, warranty, or guarantee, expressed or implied as to its accuracy. Prospective Buyer or Tenant should conduct an independent investigation and verification of all matters deemed to be material, including, but not limited to, statements of income and expenses. Consult your attorney, accountant, or other professional advisor. All Kidder Mathews designs are the sole property of Kidder Mathews. Branded materials and layouts are not authorized for use by any other firm or person.