

SPACE FOR LEASE



HISTORIC BENNETT BLOCK BUILDING

SUITE 200 | Office Space

Suite Size: ±1,315 RSF

Lease Rate: \$19.50 RSF

Lease Type: Modified Gross

SUITE 201 | Office or Live/Work Space

Suite Size: ±3,720 RSF

Lease Rate: \$19.50 RSF

Lease Type: Modified Gross

- Surrounded by Spokane's best dining and shopping
- Close proximity to Spokane's Entertainment District
- Convenient access to I-90 and Highway 395
- Foot traffic through the skywalk system
- Building Tenants: Carhartt, Mizuna & Purgatory

BENNETT BLOCK BUILDING

530 W Main Avenue
Spokane, WA 99201

JAMIE MOESGES

509.755.7563

jamie.m@kiemlehagood.com

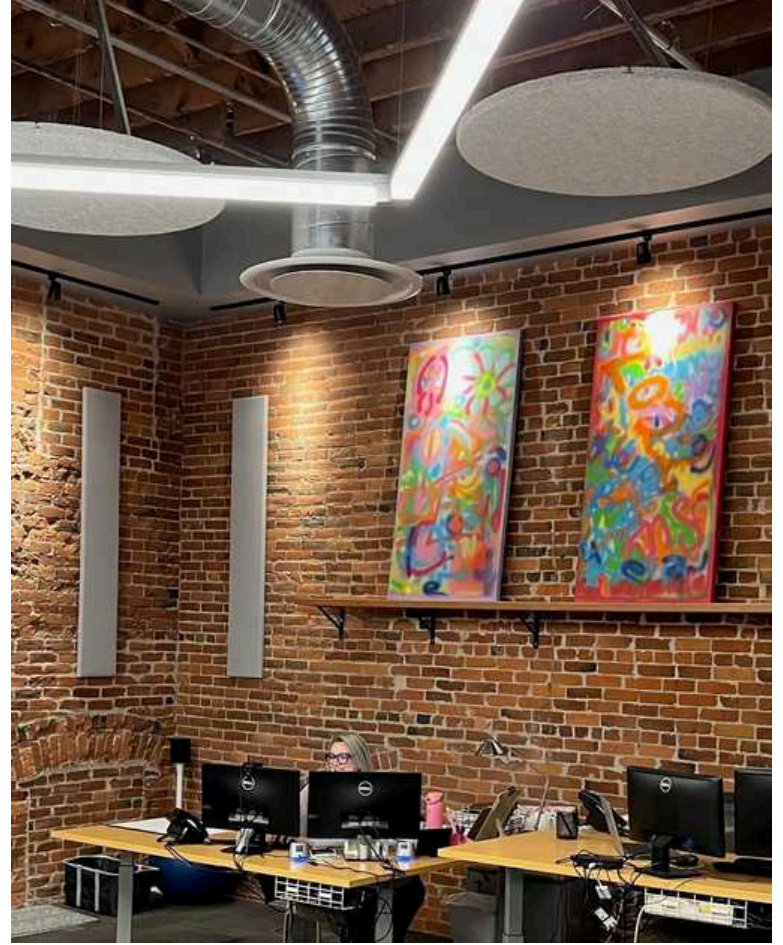
ERIK NELSON, SIOR

509.220.4042

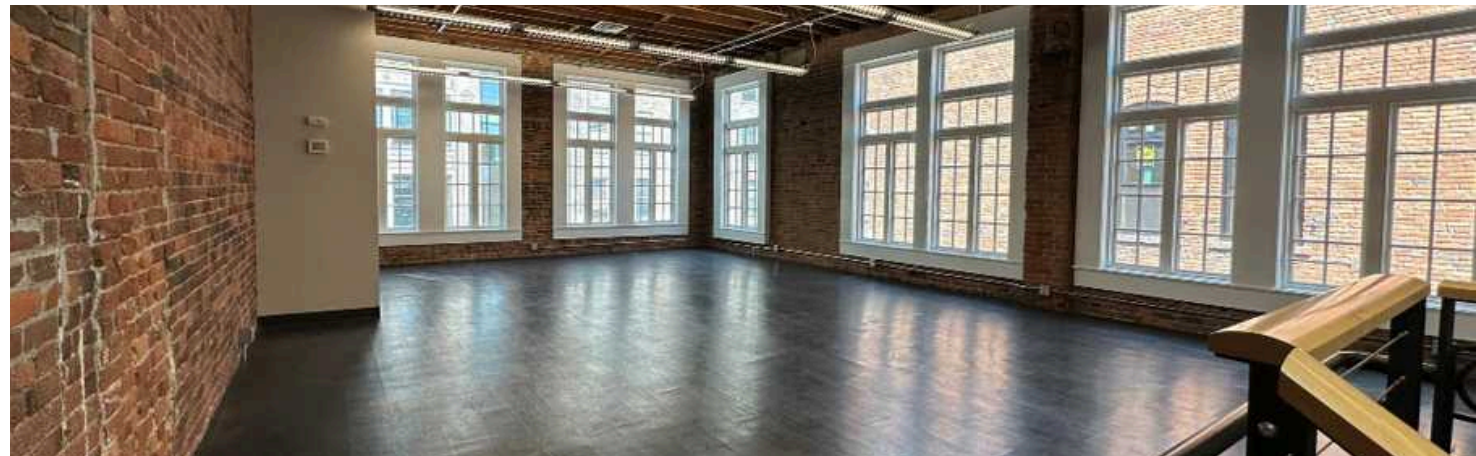
erik.nelson@kiemlehagood.com

KIEMLEHAGOOD

SUITE 200 | Office Space | ±1,315 RSF

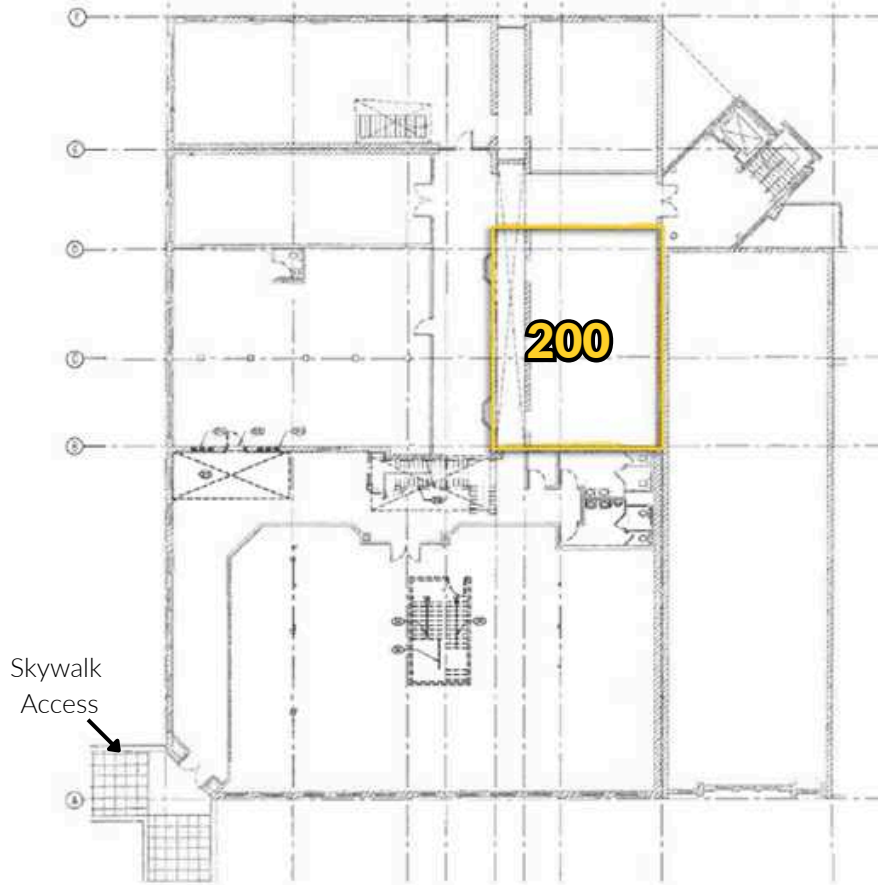


SUITE 201 | Office or Live/Work Space | ±3,720 RSF

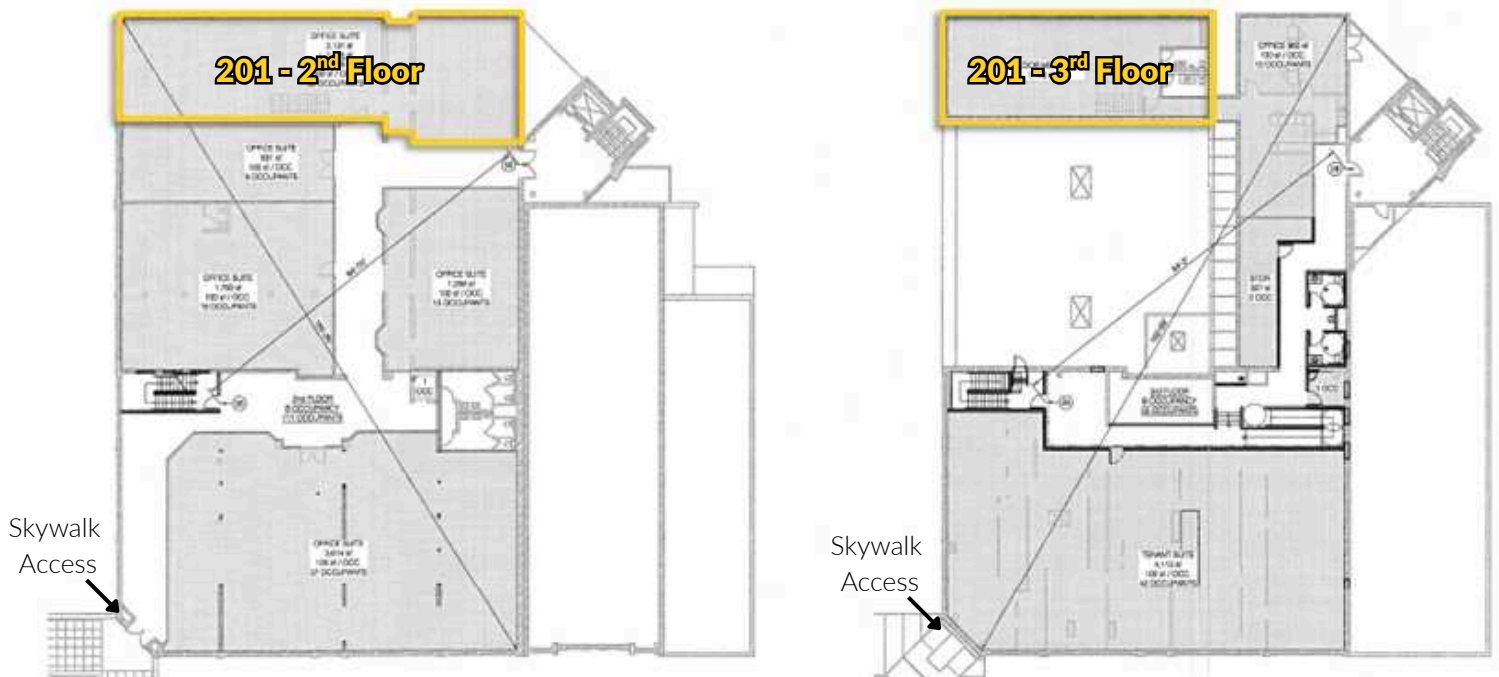


FLOOR PLANS

SUITE 200



SUITE 201





KIEMLE HAGOOD

JAMIE MOESGES
509.755.7563
jamie.m@kiemlehagood.com

ERIK NELSON, SIOR
509.220.4042
erik.nelson@kiemlehagood.com

No warranty or representation, expressed or implied, is made by Kiemle Hagood, its agents or its employees as to the accuracy of the information contained herein. All information furnished is from sources deemed reliable and submitted subject to errors, omissions, change of terms and conditions, prior sale, lease or financing, or withdrawal without notice. No one should rely solely on the above information, but instead should conduct their own investigation to independently satisfy themselves. Kiemle Hagood respects the intellectual property of others: If you believe the copyright in your work has been violated through this Website, please contact our office for notice of claims of copyright infringement. For your complaint to be valid under the Digital Millennium Copyright Act of 1998 (DMCA), you must provide the following information when providing notice of the claimed copyright infringement: Identify the material on the Website that you believe infringes your work, with enough detail so that we may locate it on the Website; provide your address, telephone number and email address; provide a statement that you have a good faith belief that the disputed use is not authorized by the copyright owner, its agent, or the law; provide a statement that the information in the notification is accurate, and under penalty of perjury, that the complaining party is authorized to act on behalf of the owner of an exclusive right that is allegedly infringed; and provide your physical or electronic signature. Upon receiving your complaint, Kiemle Hagood will, upon review, remove content that you believe infringes your copyright if the complaint is found to be valid.

OFFICE LOCATIONS
SPOKANE | COEUR D'ALENE | TRI-CITIES | MISSOULA

601 W MAIN AVENUE, SUITE 400
SPOKANE WA 99201