



**FOR LEASE**

# Des Moines Professional Center

22506 Marine View Dr S, Des Moines, WA

*Prime Southend office space with sweeping views of the Puget Sound.*

### PROPERTY HIGHLIGHTS

- + Suite 201: 1,019 RSF
- + Rent = \$2,915/mo, including all utilities, garbage recycling, & CAM
- + Free Onsite Parking: 2 reserved, 2 shared visitor parking. Street parking available
- + After hours card key access
- + Elevator
- + ADA Compliant
- + Other tenants are: Edward Jones, Pearls 4 Kids Dentistry, & Des Moines Escrow
- + Available July 1, 2026

TOTAL RSF  
**1,019 RSF**

VIRTUAL TOUR 



**BOB SWAIN, CCIM**  
Partner  
+1 206 794 0443  
bswain@nai-psp.com

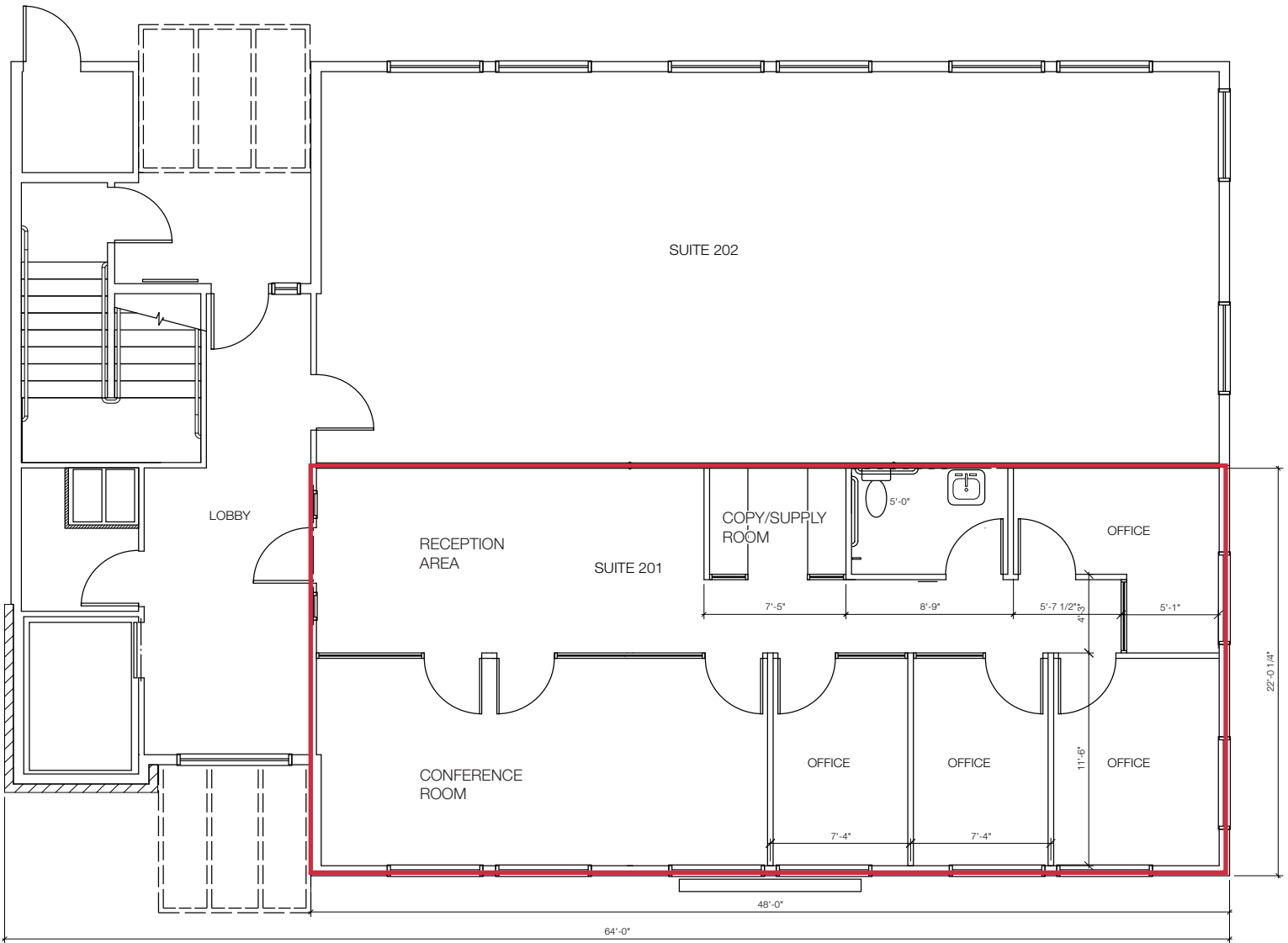
**MATTHEW HOPKINS**  
Associate  
+1 425 586 5635  
mhopkins@nai-psp.com



THE INFORMATION CONTAINED HEREIN HAS BEEN GIVEN TO US BY THE OWNER OF THE PROPERTY OR OTHER SOURCES WE DEEM RELIABLE, WE HAVE NO REASON TO DOUBT ITS ACCURACY, BUT WE DO NOT GUARANTEE IT. ALL INFORMATION SHOULD BE VERIFIED PRIOR TO PURCHASE OR LEASE.

[nai-psp.com](http://nai-psp.com)

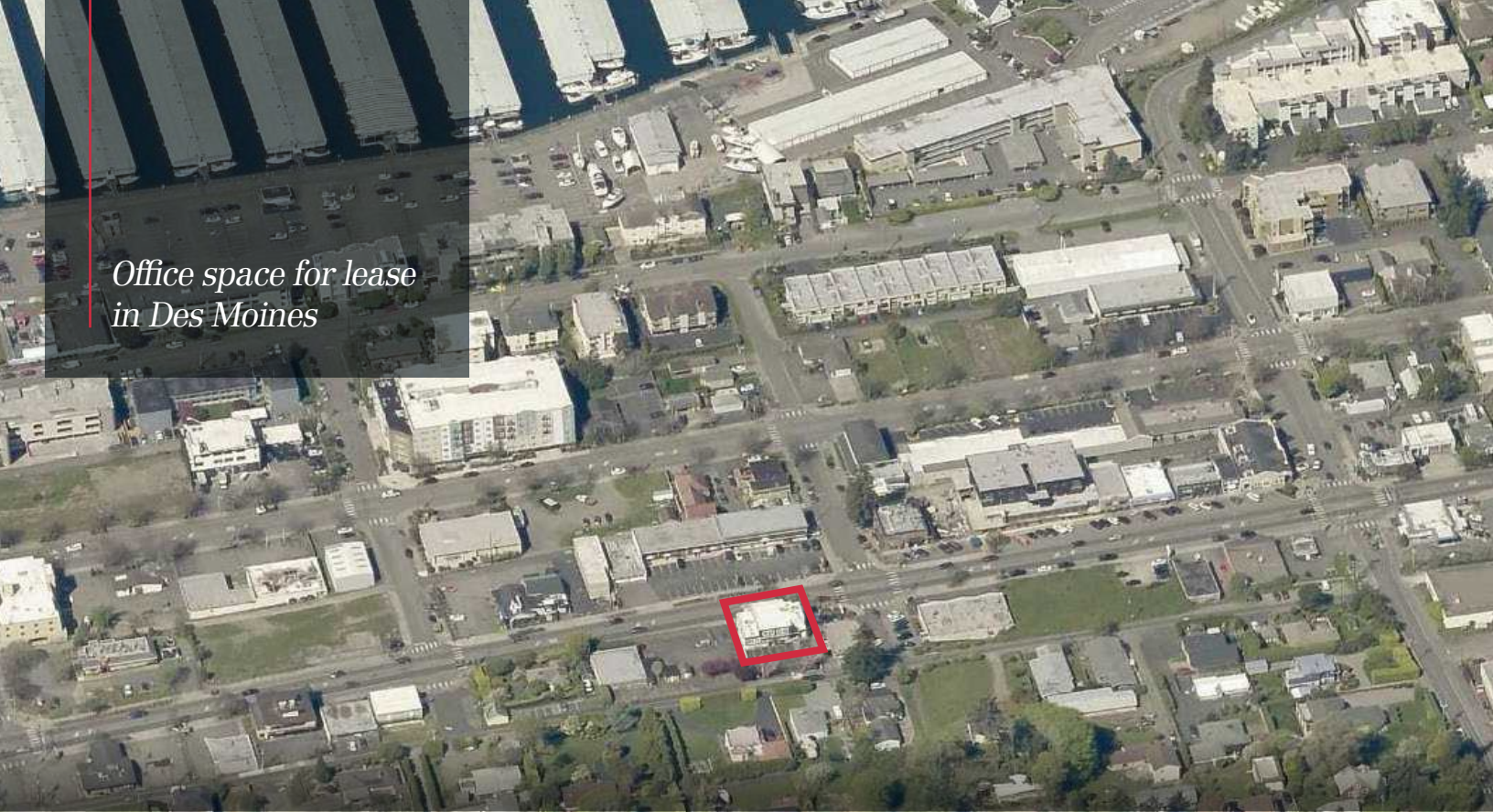
# Floor Plan



**BOB SWAIN, CCIM**  
Partner  
+1 206 794 0443  
bswain@nai-pp.com

**MATTHEW HOPKINS**  
Associate  
+1 425 586 5635  
mhopkins@nai-pp.com





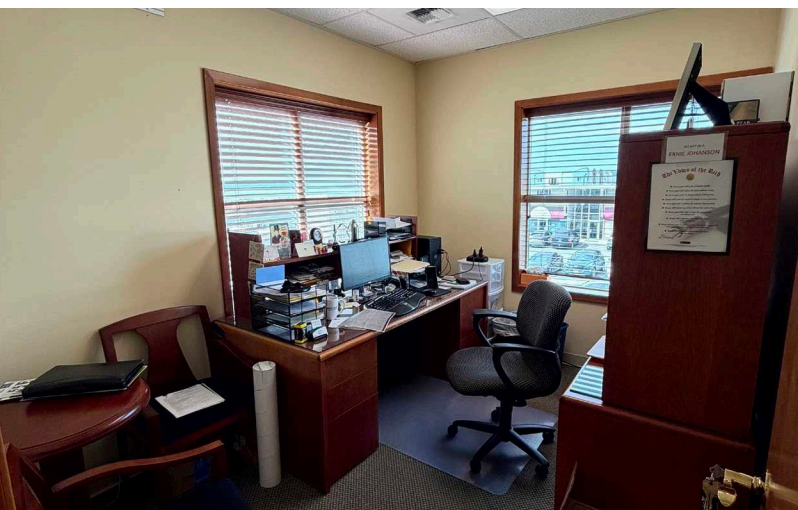
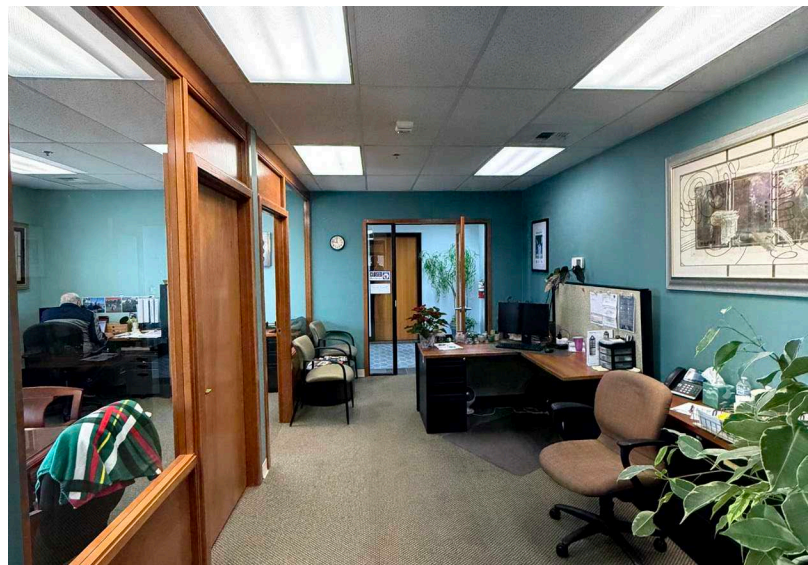
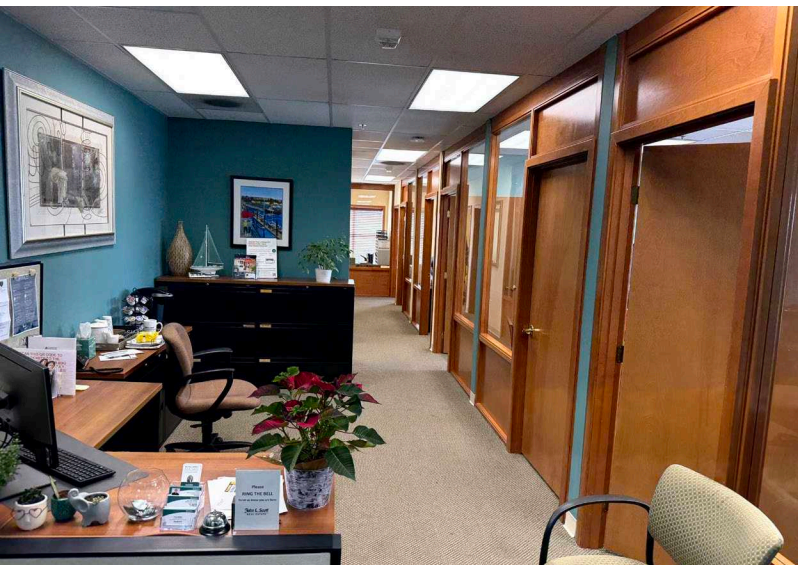
*Office space for lease  
in Des Moines*



**BOB SWAIN, CCIM**  
Partner  
+1 206 794 0443  
bswain@nai-pp.com

**MATTHEW HOPKINS**  
Associate  
+1 425 586 5635  
mhopkins@nai-pp.com





**BOB SWAIN, CCIM**  
Partner  
+1 206 794 0443  
bswain@nai-pp.com

**MATTHEW HOPKINS**  
Associate  
+1 425 586 5635  
mhopkins@nai-pp.com

