

WHITE RIVER

CORPORATE PARK BUILDING A

3,000 SF (689 SF OFFICE)

2002 WEST VALLEY HWY N, AUBURN, WA

167

SUITE 300

NEWMARK

Owned and Managed by:



THAD MALLORY, SIOR
425.362.1410
thad.mallory@nmrk.com

CAM WARREN
425.362.1395
cam.warren@nmrk.com

TAYLOR HOFF, SIOR
425.362.1388
taylor.hoff@nmrk.com

BLAKE BENTZ
425.362.1391
blake.bentz@nmrk.com

AMENITIES/LOCATION MAP

WHITE RIVER CORPORATE PARK, BUILDING A



ABOUT THE BUILDING

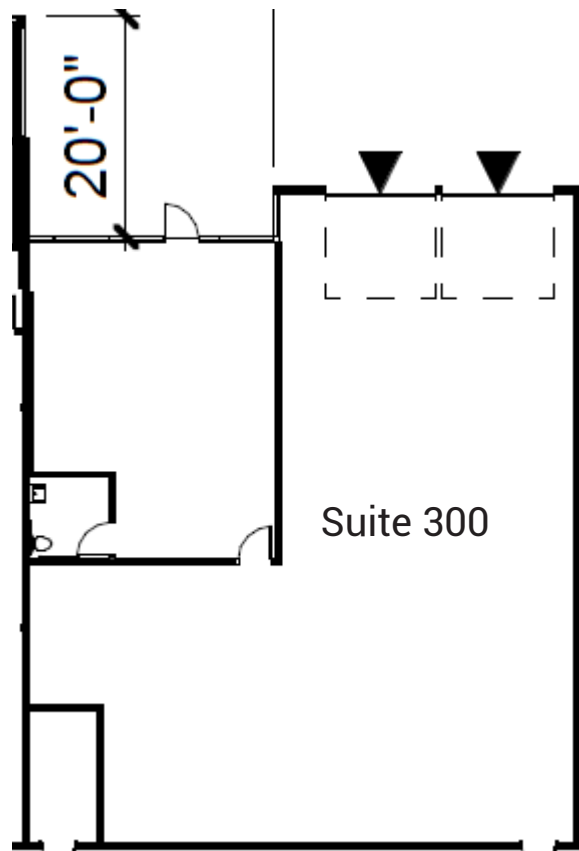
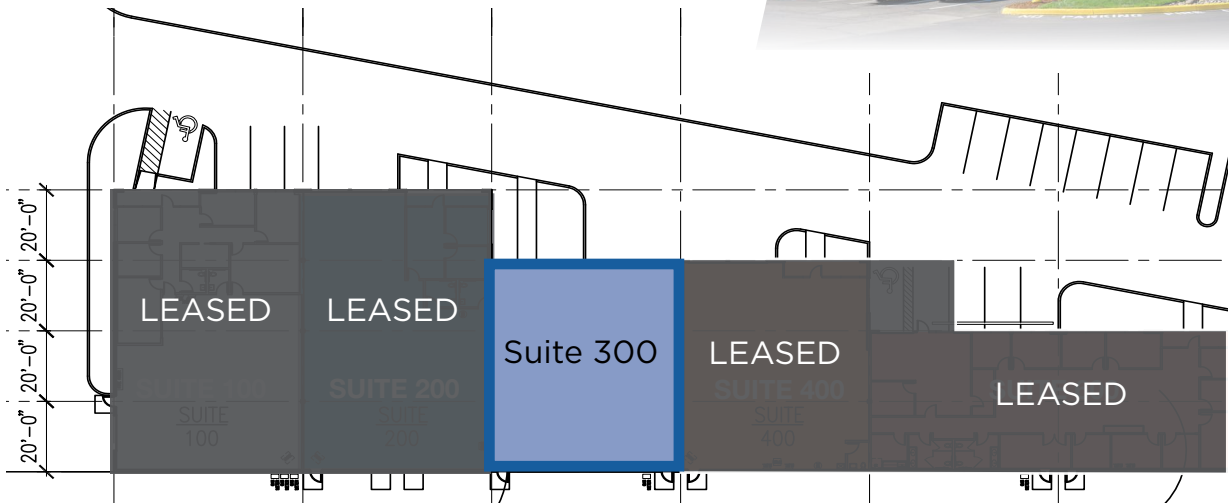
Suite 300

- 3,000 SF
- 689 SF Office
- 2 Grade Level Doors
- 16' Clear Height
- Available Now

Property Highlights

- High image industrial park
- Excellent freeway visibility
- Great distribution or manufacturing space
- Immediate access to SR 167 & SR 18

SITE & FLOOR PLAN



WHITE RIVER CORPORATE PARK, BUILDING A

THAD MALLORY, SIOR
425.362.1410
thad.mallory@nmrk.com

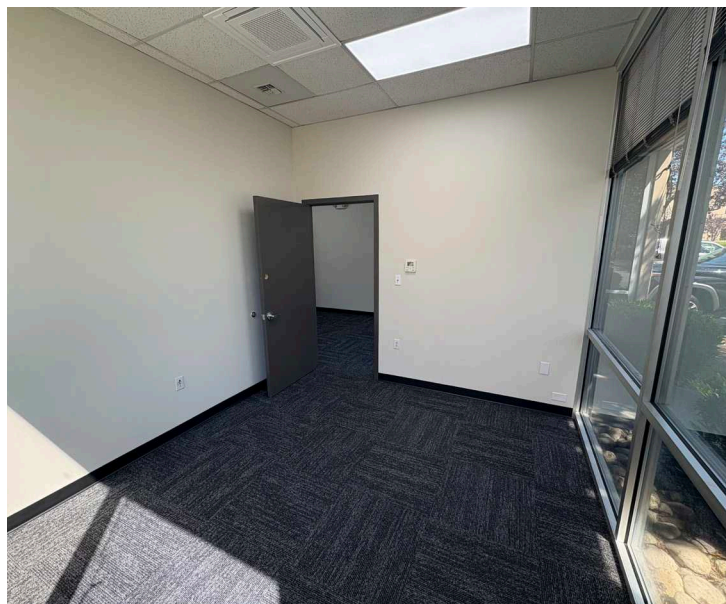
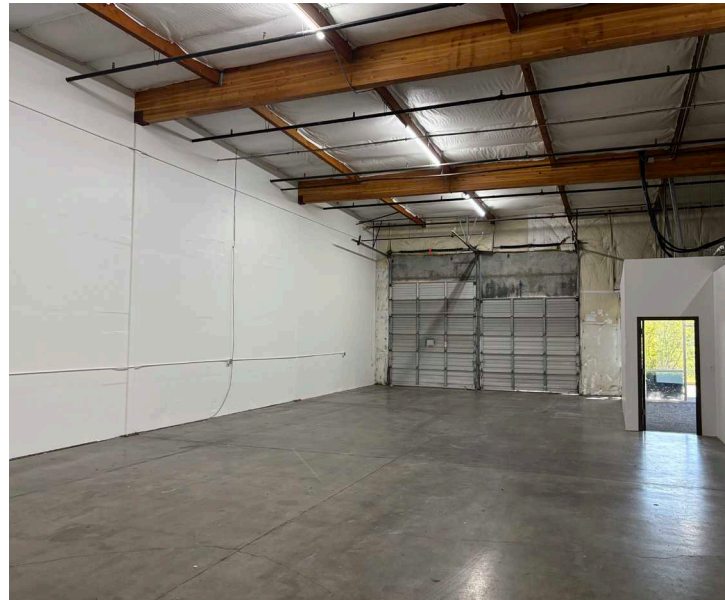
TAYLOR HOFF, SIOR
425.362.1388
taylor.hoff@nmrk.com

CAM WARREN
425.362.1395
cam.warren@nmrk.com

BLAKE BENTZ
425.362.1391
blake.bentz@nmrk.com

NEWMARK

INTERIOR PHOTOS



WHITE RIVER CORPORATE PARK, BUILDING A

NEWMARK

THAD MALLORY, SIOR
425.362.1410
thad.mallory@nmrk.com

TAYLOR HOFF, SIOR
425.362.1388
taylor.hoff@nmrk.com

CAM WARREN
425.362.1395
cam.warren@nmrk.com

BLAKE BENTZ
425.362.1391
blake.bentz@nmrk.com

The information contained herein has been obtained from sources deemed reliable but has not been verified and no guarantee, warranty or representation, either express or implied, is made with respect to such information. Terms of sale or lease and availability are subject to change or withdrawal without notice.