

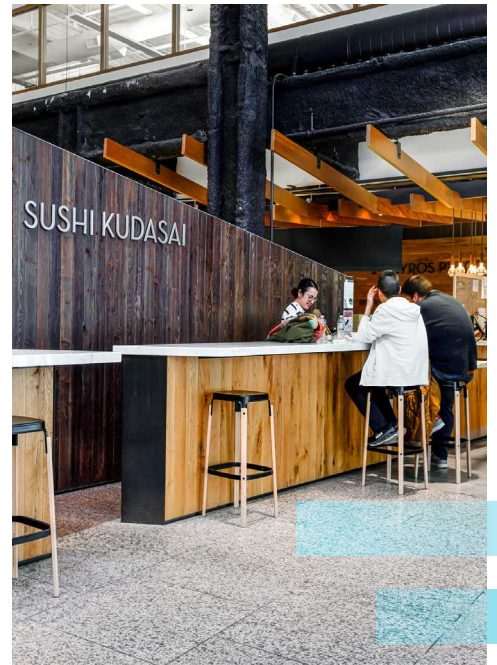
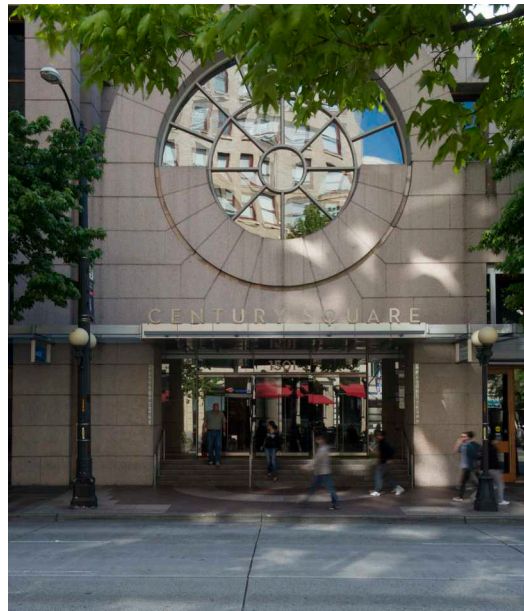
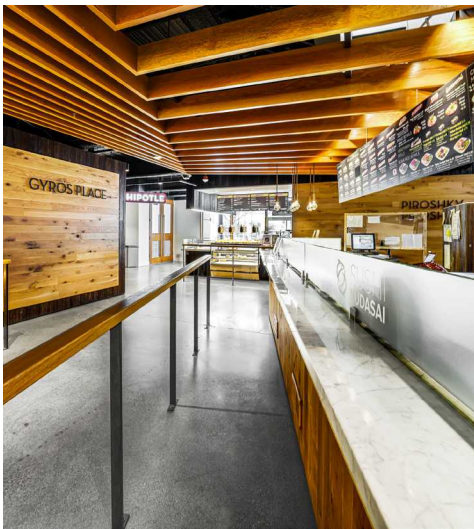
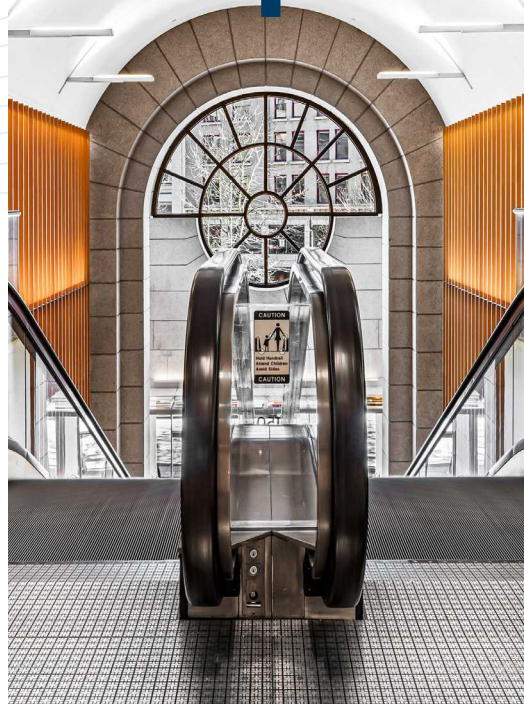
BRODERICK
• GROUP •



CENTURY SQUARE

1501 4TH AVE | SEATTLE, WA

CENTURY

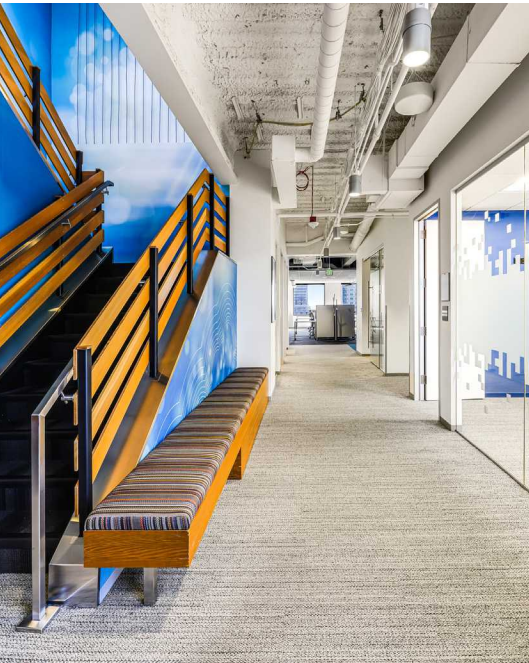
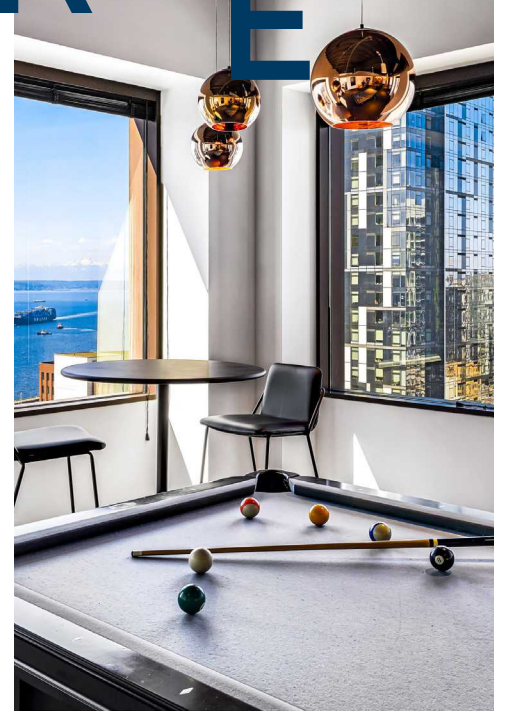
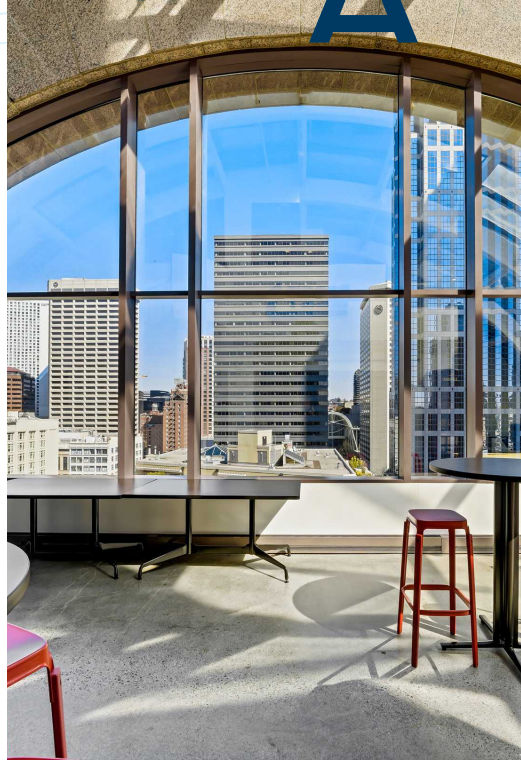


WHERE
CONVENIENCE
MEETS
OPPORTUNITY

Positioned in downtown Seattle's prime location, Century Square places you within walking distance of top-tier dining, shopping, and entertainment.

With effortless access to public transit, light rail, and major highways, including Highway 99 and I-5, getting around is easy.

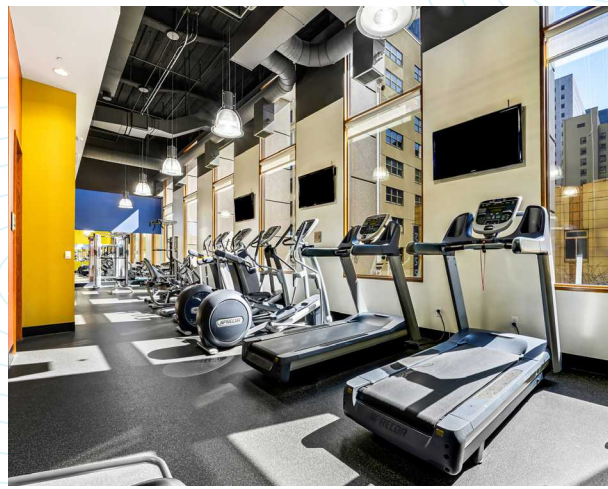
S Q U A R E



**DESIGNED TO
ADAPT. BUILT
TO INSPIRE.**

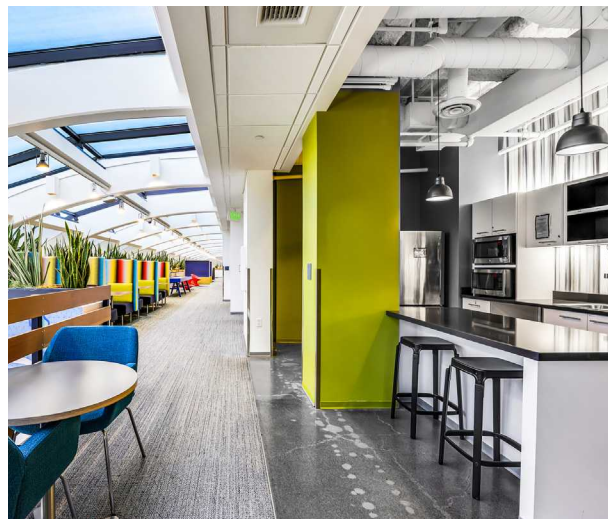
Adaptable office spaces at Century Square offer businesses in Downtown Seattle the flexibility to customize layouts for their unique needs. With proximity to major transit, retail, and dining—including a five-restaurant food

court, Chipotle, and Yard House—plus on-site property management and 24-hour security, companies can create dynamic, secure work environments that foster creativity and collaboration.



WiredScore
PLATINUM

WiredScore Platinum certification means Century Square Seattle supports even the most demanding technology needs. The building delivers best-in-class connectivity, with multiple high-quality internet providers, resilient and diverse telecom and power infrastructure, robust wireless networks, and the flexibility to quickly support new services.



SMART SPACES. THOUGHTFUL AMENITIES.

Elevate your work experience at Century Square with breathtaking views, a state-of-the-art conference center, and convenient onsite dining.

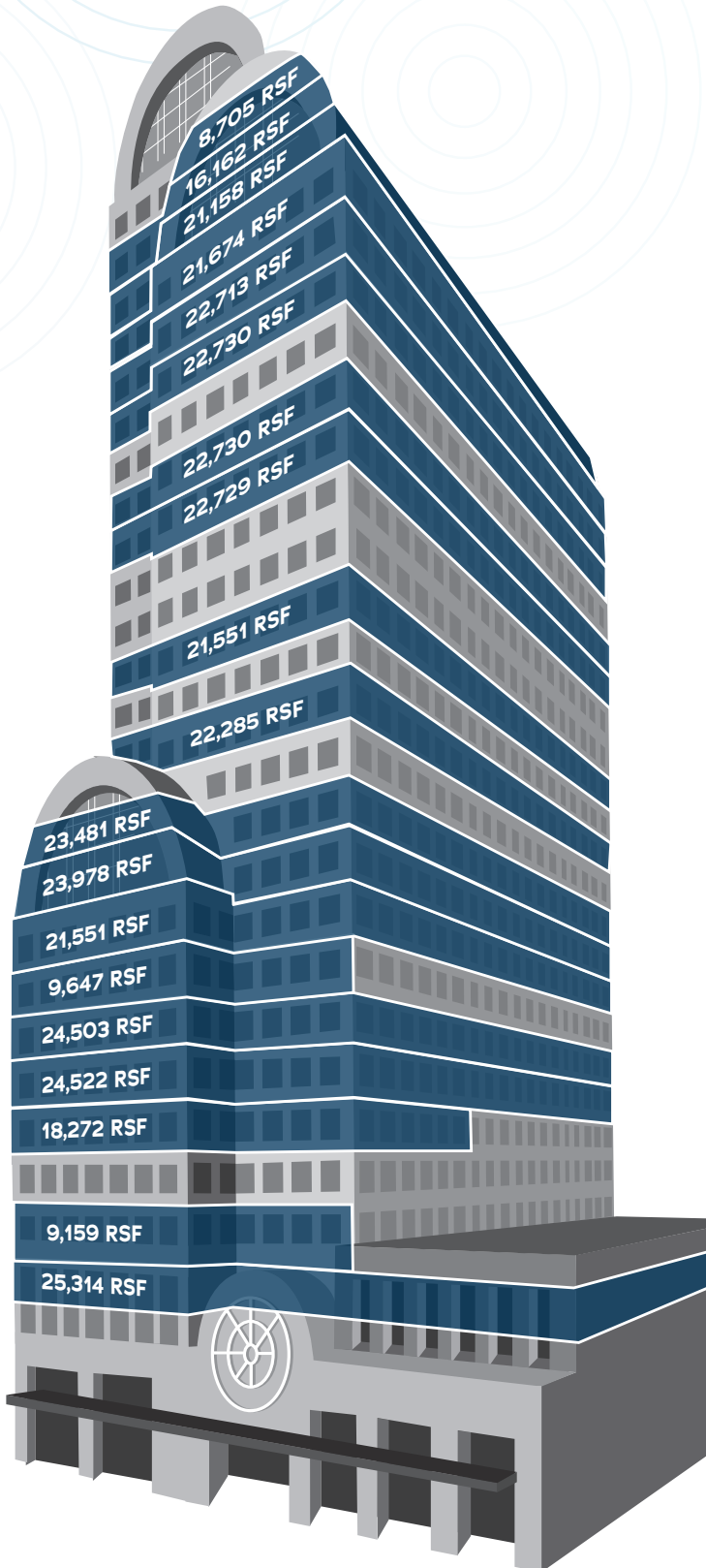
Stay active with a full fitness center, complete with showers and lockers, and take advantage of secure bike storage—all backed by our 24-hour on-site security and property management team.



CENTURY SQUARE

AVAILABLE SPACE

30
29
28
27
26
25
24
23
22
21
20
19
18
17
16
15
14
13
12
11
10
9
8
7
6
5
4
3
2
1



VIRTUAL TOUR	FLOOR / SUITE	RSF	AVAILABLE
	28/2850	2,546	NOW
	28/2800	5,729	NOW
▶	27/2700	16,162	NOW
▶	26/2600	21,158	NOW
	25/2500	21,674	NOW
	24/2450	3,952	NOW
	24/2401	13,473	NOW
	24/2400	5,288	NOW
▶	23/2350	6,402	NOW
	23/2300	16,145	NOW
	22/2200	22,029	NOW
	21/2150	7,188	NOW
	21/2130	5,424	NOW
	21/2100	10,118	NOW
▶	20/2000	22,729	NOW
	18/1800	21,389	NOW
	17/1750	9,326	NOW
	17/1725	1,399	NOW
	17/1700	10,826	NOW
	15/1500	22,285	9/1/2026, WITH 60 DAYS' NOTICE
▶	13/1300	23,481	NOW
▶	12/1200	23,978	NOW
▶	11/1140	6,391	NOW
▶	11/1100	17,801	NOW
▶	10/1010	9,647	NOW
▶	9/900	24,503	NOW
▶	8/800	24,522	NOW
▶	7/700	18,272	NOW
▶	5/510	9,159	NOW
▶	4/400	25,314	NOW

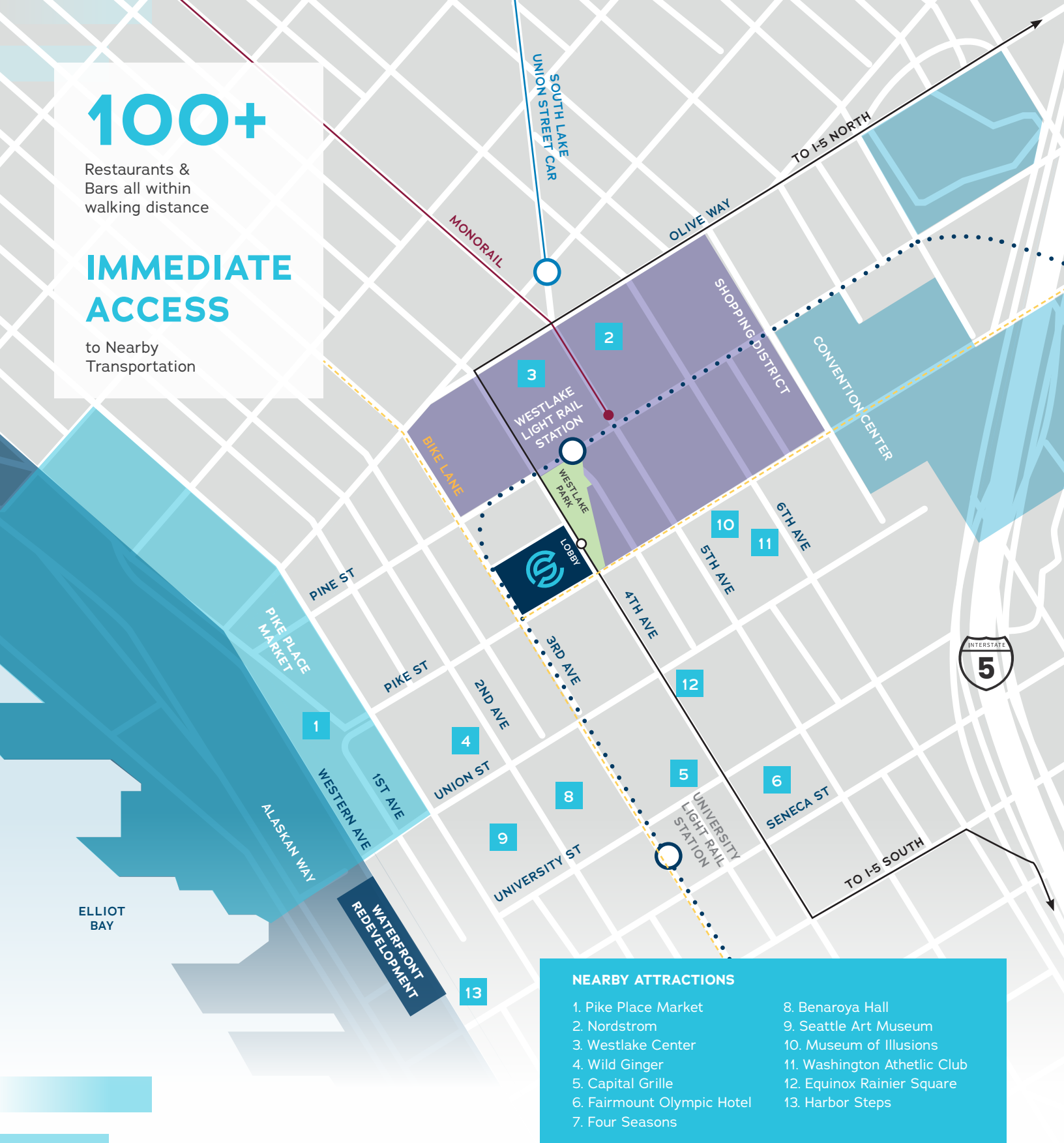
The information contained herein has been given to us by the owner or sources which we deem reliable. We have no reason to doubt its accuracy, but we do not guarantee it. Prospective tenants should carefully verify all information contained herein.

100+

Restaurants & Bars all within walking distance

IMMEDIATE ACCESS

to Nearby Transportation



NEARBY ATTRACTIONS

1. Pike Place Market
2. Nordstrom
3. Westlake Center
4. Wild Ginger
5. Capital Grille
6. Fairmont Olympic Hotel
7. Four Seasons
8. Benaroya Hall
9. Seattle Art Museum
10. Museum of Illusions
11. Washington Athletic Club
12. Equinox Rainier Square
13. Harbor Steps

CONNECTED TO EVERYTHING. DESIGNED FOR SUCCESS.

Century Square is centrally located in Downtown Seattle's business district, surrounded by top restaurants, bars, and iconic attractions like Pike Place Market

and the Seattle Great Wheel. With immediate access to the Link Light Rail and a short walk to the Seattle Ferry Terminal, connectivity is seamless.



CENTURY SQUARE

1501 4TH AVE | SEATTLE, WA

FLOOR 28

8,705 RSF



SUITE 2800

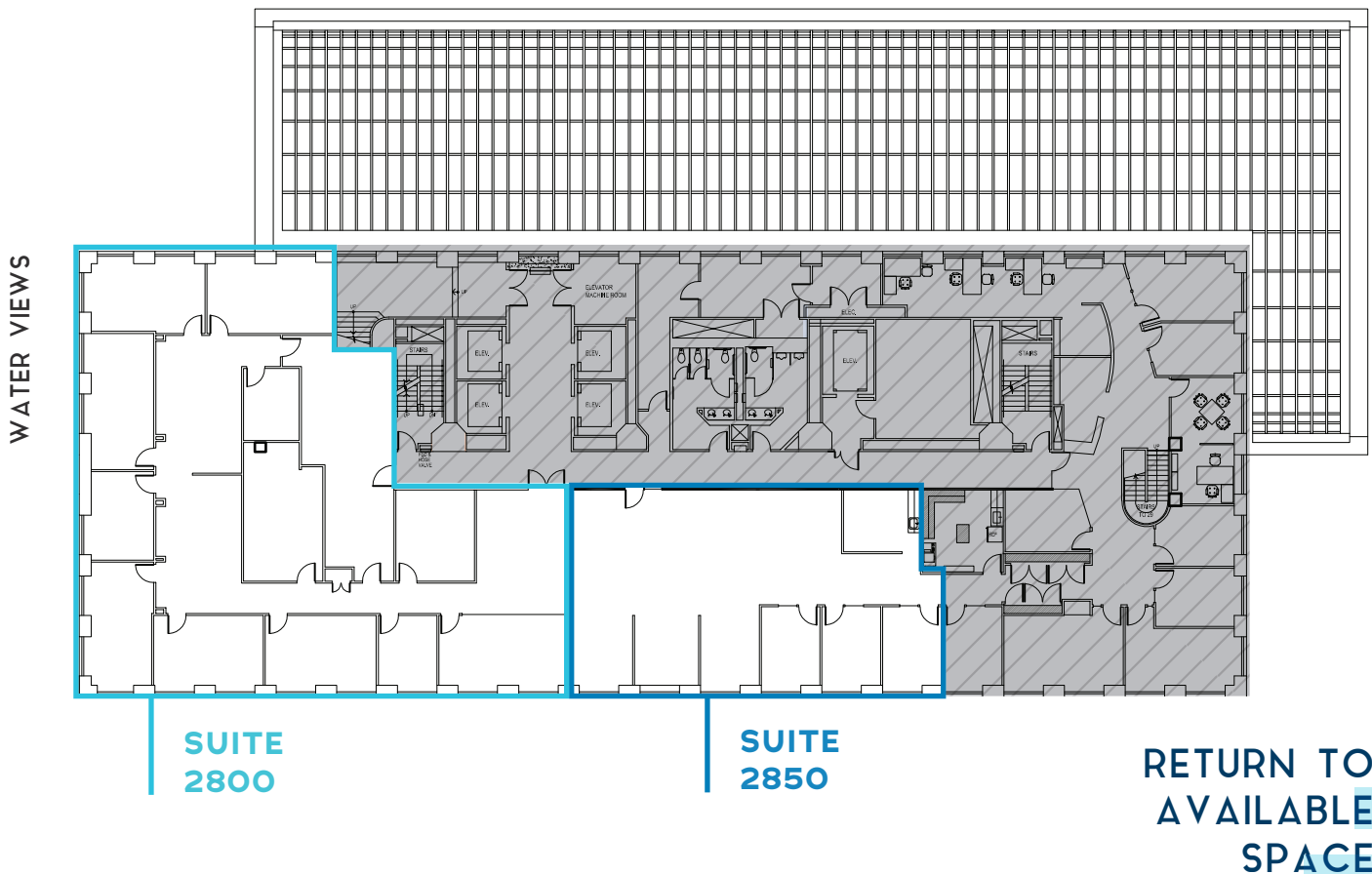
5,729 RSF | AVAILABLE NOW

- Perimeter offices and meeting rooms

SUITE 2850

2,546 RSF | AVAILABLE NOW

- Open work area



DAVID GREENWOOD | 206.838.7635
greenwood@broderickgroup.com

LARRY ALMELEH | 206.910.0859
almeleh@broderickgroup.com

DAMON MCCARTNEY | 206.838.7633
mccartney@broderickgroup.com

LAUREN HALLGRIMSON | 206.948.4440
hallgrimson@broderickgroup.com



CENTURY SQUARE

1501 4TH AVE | SEATTLE, WA

FLOOR 27

16,162 RSF

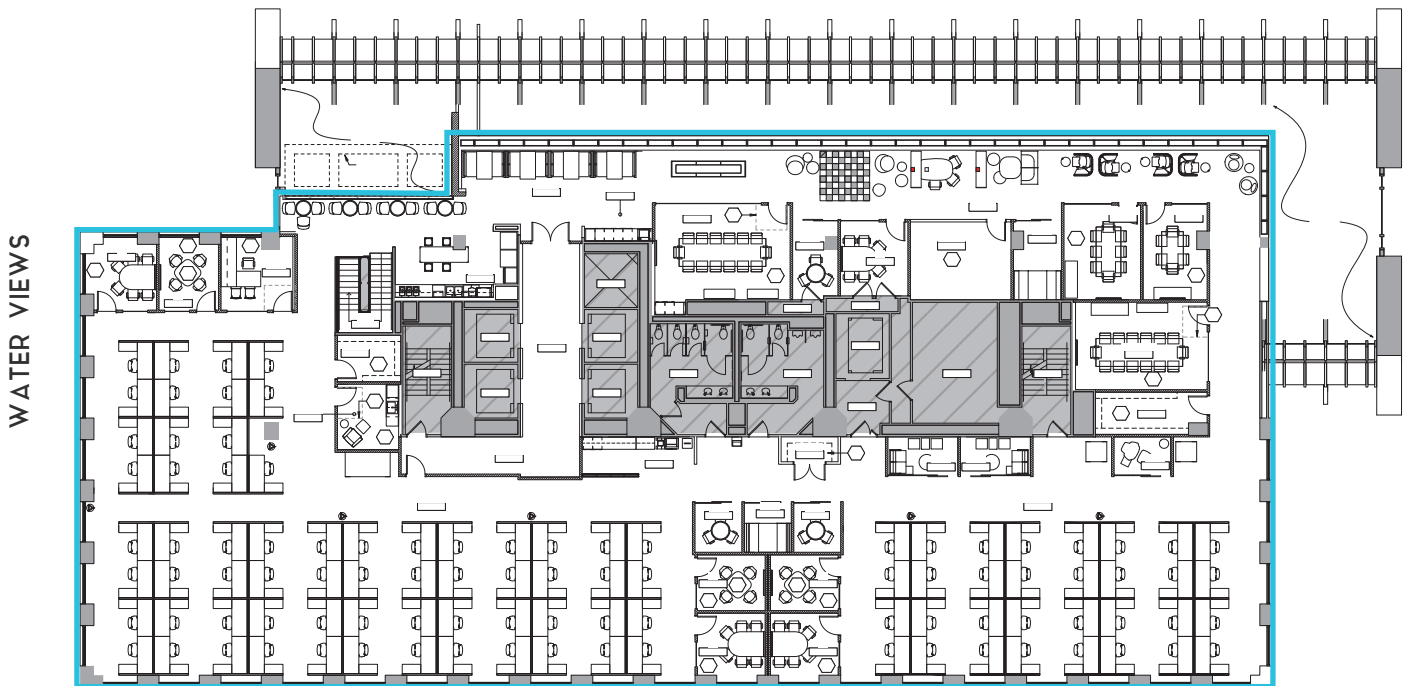


SUITE 2700

16,162 RSF | AVAILABLE NOW

- Open work area
- Interstitial stair connection to Floor 26
- [Virtual Tour](#)
- Unique barrel vault areas
- Fully-furnished
- Plug-n-play

WATER VIEWS



RETURN TO
AVAILABLE
SPACE



DAVID GREENWOOD | 206.838.7635
greenwood@broderickgroup.com

LARRY ALMELEH | 206.910.0859
almeleh@broderickgroup.com

DAMON MCCARTNEY | 206.838.7633
mccartney@broderickgroup.com

LAUREN HALLGRIMSON | 206.948.4440
hallgrimson@broderickgroup.com



CENTURY SQUARE

1501 4TH AVE | SEATTLE, WA

FLOOR 26

21,158 RSF

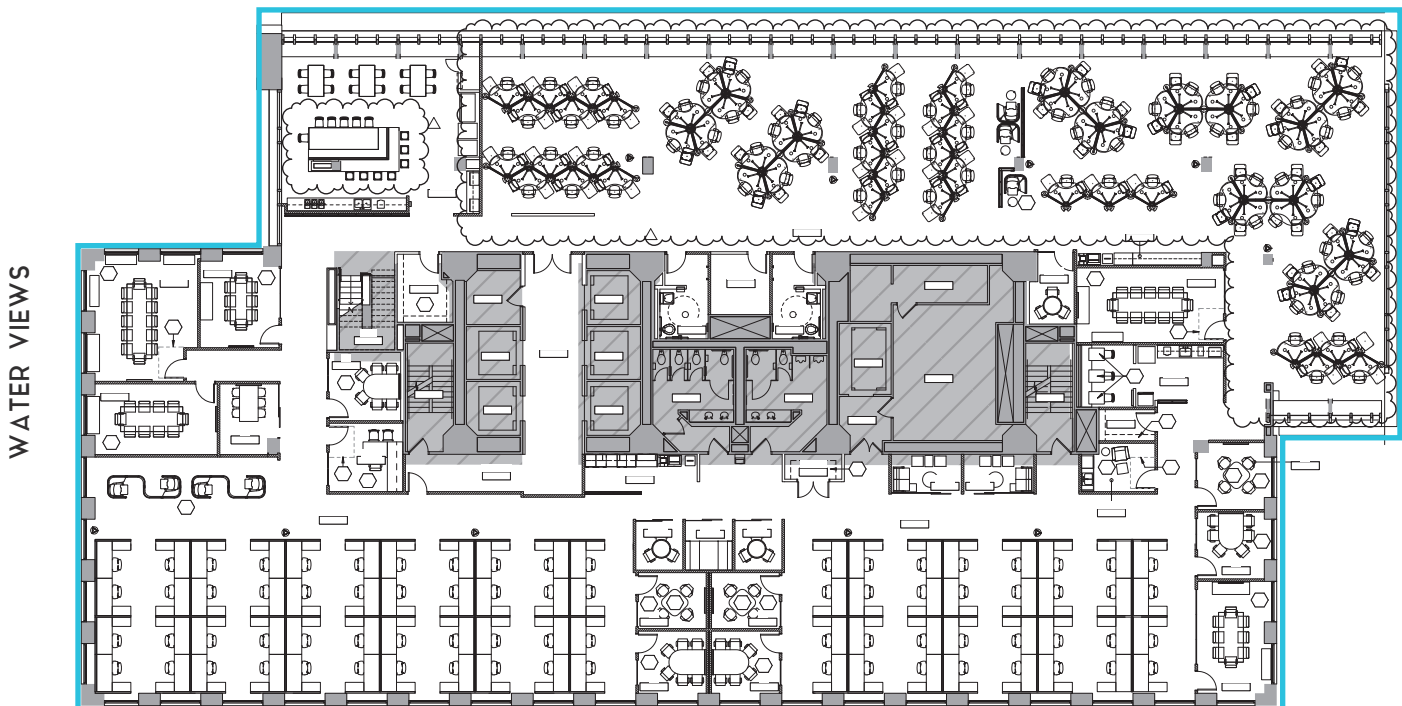


SUITE 2600

21,158 RSF | AVAILABLE NOW

- Open work area
- Interstitial stair connection to Floor 27
- [Virtual Tour](#)
- Unique barrel vault areas
- Fully-furnished
- Plug-n-play

WATER VIEWS



RETURN TO
AVAILABLE
SPACE



DAVID GREENWOOD | 206.838.7635
greenwood@broderickgroup.com

LARRY ALMELEH | 206.910.0859
almeleh@broderickgroup.com

DAMON MCCARTNEY | 206.838.7633
mccartney@broderickgroup.com

LAUREN HALLGRIMSON | 206.948.4440
hallgrimson@broderickgroup.com



CENTURY SQUARE

1501 4TH AVE | SEATTLE, WA

FLOOR 25

21,674 RSF

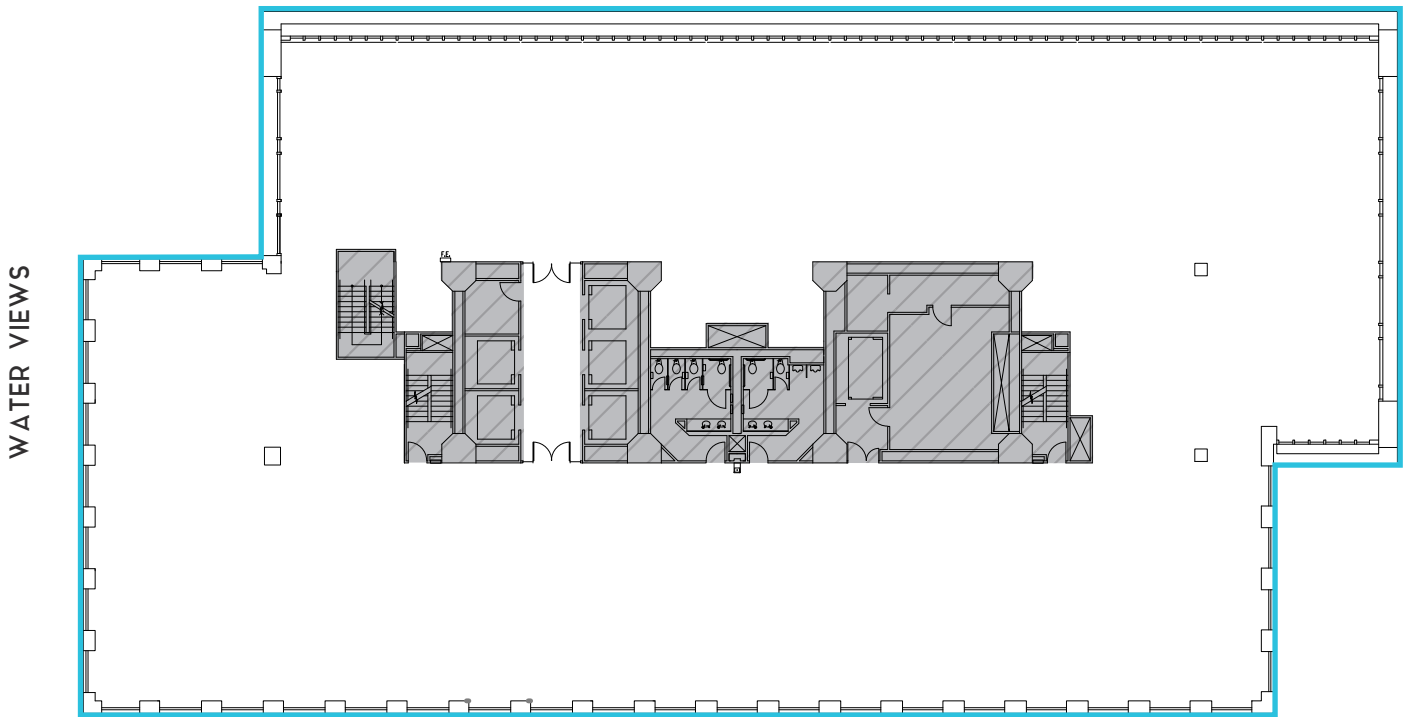


SUITE 2500

21,674 RSF | AVAILABLE NOW

- Open work area

WATER VIEWS



RETURN TO
AVAILABLE
SPACE



DAVID GREENWOOD | 206.838.7635
greenwood@broderickgroup.com

LARRY ALMELEH | 206.910.0859
almeleh@broderickgroup.com

DAMON MCCARTNEY | 206.838.7633
mccartney@broderickgroup.com

LAUREN HALLGRIMSON | 206.948.4440
hallgrimson@broderickgroup.com



CENTURY SQUARE

1501 4TH AVE | SEATTLE, WA

FLOOR 24

22,713 RSF



SUITE 2400

5,288 RSF | AVAILABLE NOW

- Law firm build out
- 16 Perimeter private offices
- Kitchen/break room
- Storage room

SUITE 2401

13,473 RSF | AVAILABLE NOW

- Fully furnished with a mix of private offices, meeting rooms, and open area

SUITE 2450

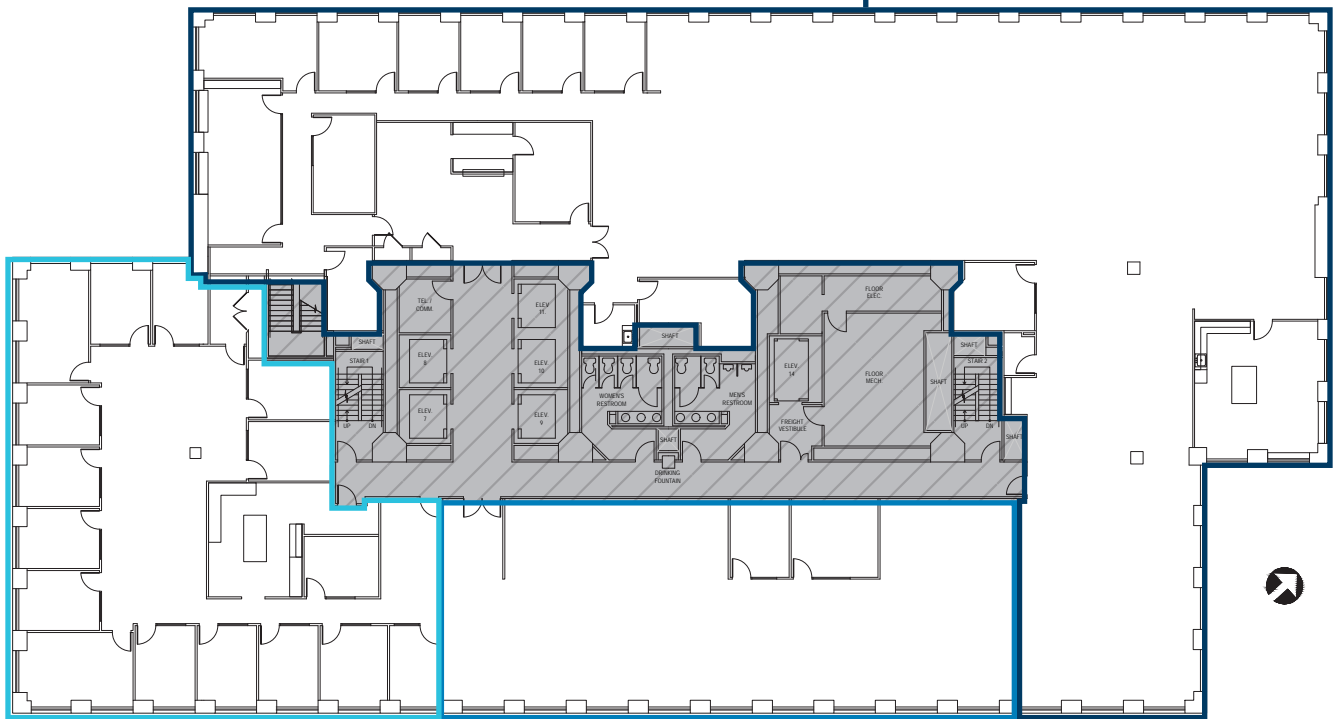
3,952 RSF | AVAILABLE NOW

- Open work area

WATER VIEWS

SUITE 2401

WATER VIEWS



SUITE 2400

SUITE 2450

RETURN TO AVAILABLE SPACE



DAVID GREENWOOD | 206.838.7635
greenwood@broderickgroup.com

LARRY ALMELEH | 206.910.0859
almeleh@broderickgroup.com

DAMON MCCARTNEY | 206.838.7633
mccartney@broderickgroup.com

LAUREN HALLGRIMSON | 206.948.4440
hallgrimson@broderickgroup.com



CENTURY SQUARE

1501 4TH AVE | SEATTLE, WA

FLOOR 23

22,730 RSF



SUITE 2300

16,145 RSF | AVAILABLE NOW

- Open work area

SUITE 2350

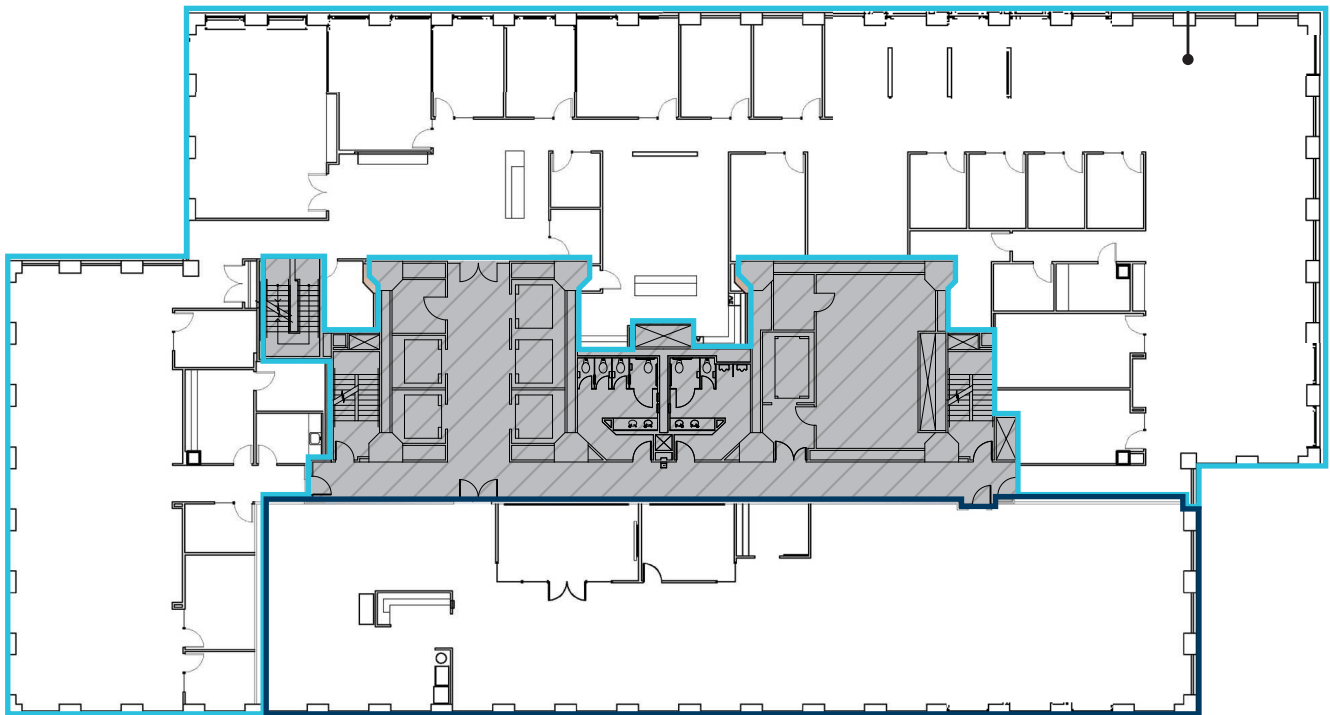
6,402 RSF | AVAILABLE NOW

- Open work area
- [Virtual Tour](#)

SUITE 2300

WATER VIEWS

WATER VIEWS



SUITE 2350

RETURN TO AVAILABLE SPACE



DAVID GREENWOOD | 206.838.7635
greenwood@broderickgroup.com

LARRY ALMELEH | 206.910.0859
almeleh@broderickgroup.com

DAMON MCCARTNEY | 206.838.7633
mccartney@broderickgroup.com

LAUREN HALLGRIMSON | 206.948.4440
hallgrimson@broderickgroup.com



CENTURY SQUARE

1501 4TH AVE | SEATTLE, WA

FLOOR 22

22,029 RSF

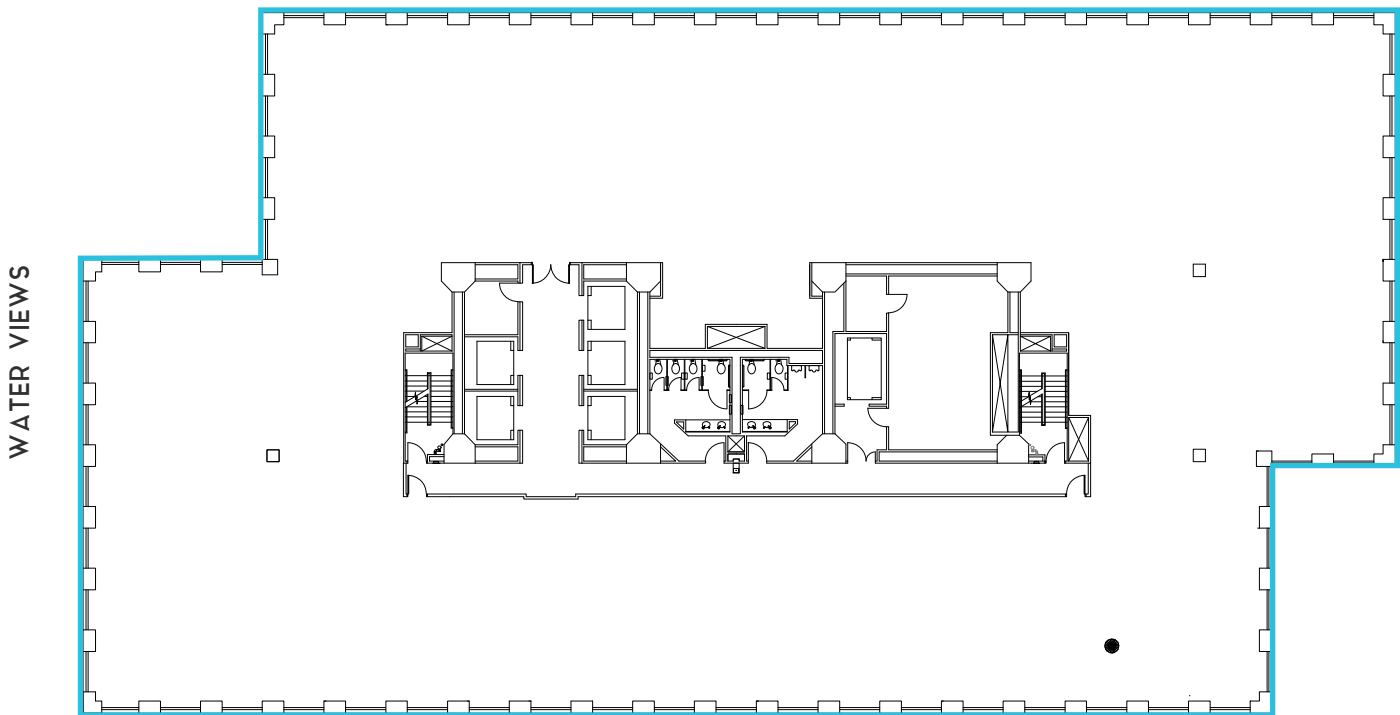


SUITE 2200

22,029 RSF | AVAILABLE NOW

- Full floor
- Open work area

WATER VIEWS



RETURN TO
AVAILABLE
SPACE



DAVID GREENWOOD | 206.838.7635
greenwood@broderickgroup.com

LARRY ALMELEH | 206.910.0859
almeleh@broderickgroup.com

DAMON MCCARTNEY | 206.838.7633
mccartney@broderickgroup.com

LAUREN HALLGRIMSON | 206.948.4440
hallgrimson@broderickgroup.com



CENTURY SQUARE

1501 4TH AVE | SEATTLE, WA

FLOOR 21

22,730 RSF



SUITE 2100

10,188 RSF | AVAILABLE NOW

- 11 private offices, 1 conference room, open area, and kitchen/break area
- Fully furnished

SUITE 2130

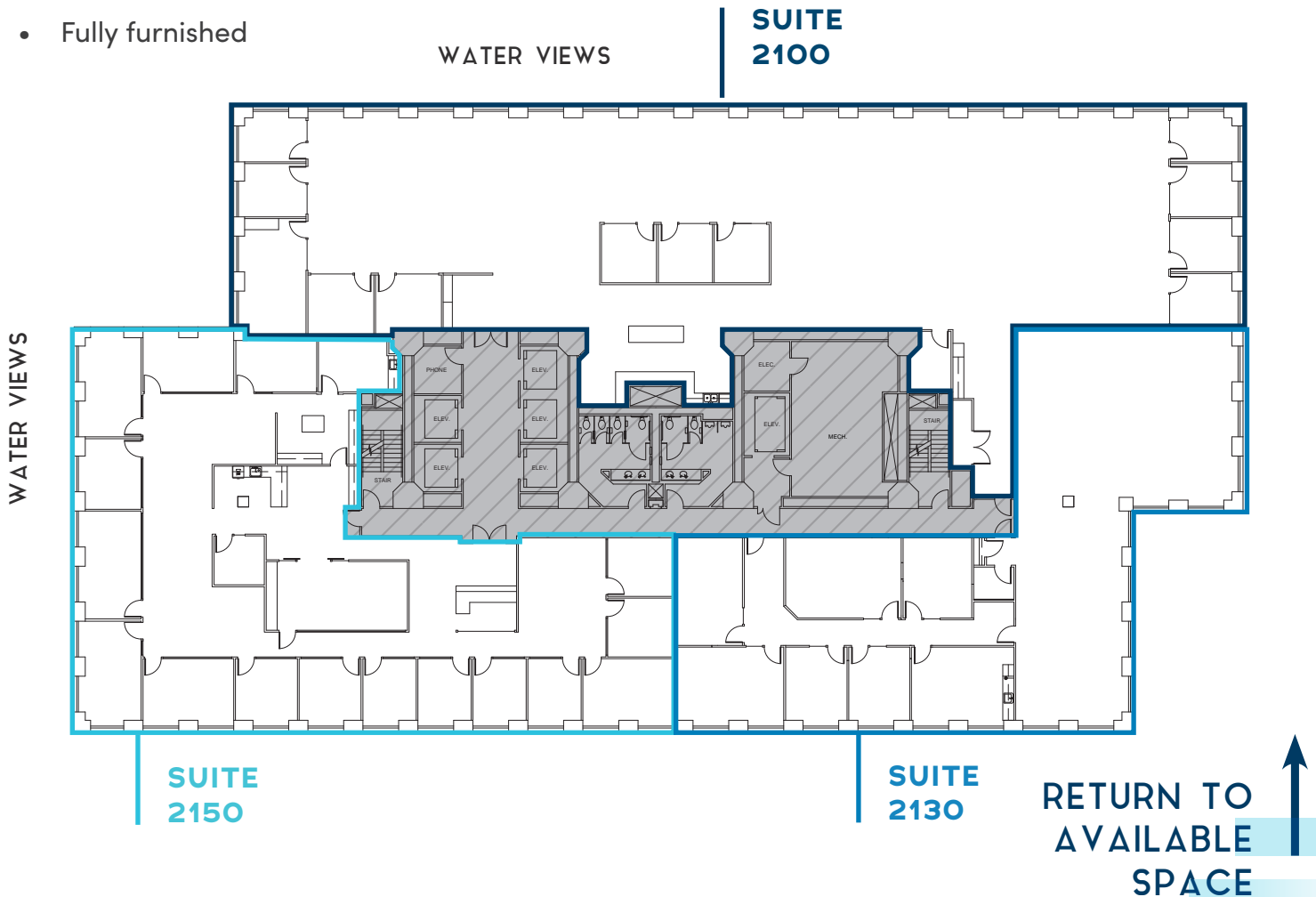
5,424 RSF | AVAILABLE NOW

- Open work area

SUITE 2150

7,188 RSF | AVAILABLE NOW

- Law firm build out



DAVID GREENWOOD | 206.838.7635
greenwood@broderickgroup.com

LARRY ALMELEH | 206.910.0859
almeleh@broderickgroup.com

DAMON MCCARTNEY | 206.838.7633
mccartney@broderickgroup.com

LAUREN HALLGRIMSON | 206.948.4440
hallgrimson@broderickgroup.com



CENTURY SQUARE

1501 4TH AVE | SEATTLE, WA

FLOOR 20

22,729 RSF

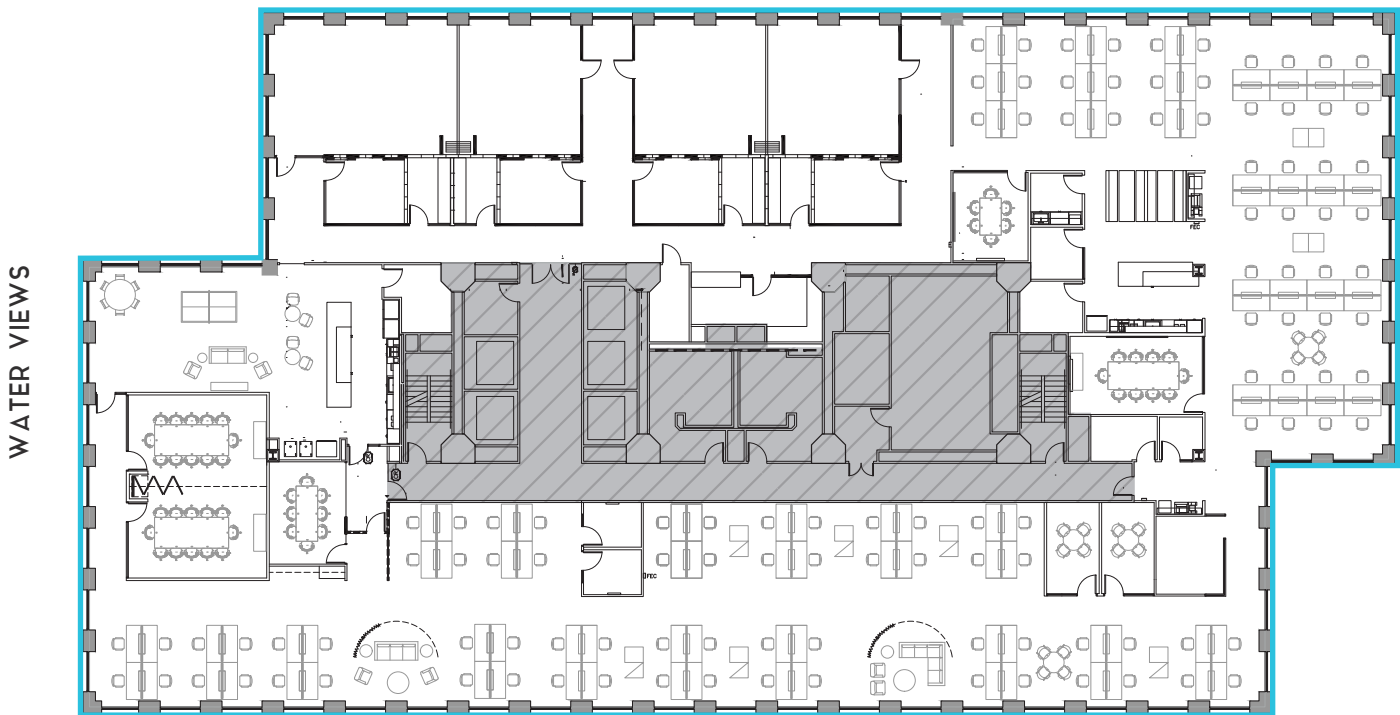


SUITE 2000

22,729 RSF | AVAILABLE NOW

- Full floor
- Open work area
- Furnished / Plug & Play
- [Virtual Tour](#)

WATER VIEWS



RETURN TO
AVAILABLE
SPACE



DAVID GREENWOOD | 206.838.7635
greenwood@broderickgroup.com

LARRY ALMELEH | 206.910.0859
almeleh@broderickgroup.com

DAMON MCCARTNEY | 206.838.7633
mccartney@broderickgroup.com

LAUREN HALLGRIMSON | 206.948.4440
hallgrimson@broderickgroup.com



CENTURY SQUARE

1501 4TH AVE | SEATTLE, WA

FLOOR 18

21,389 RSF

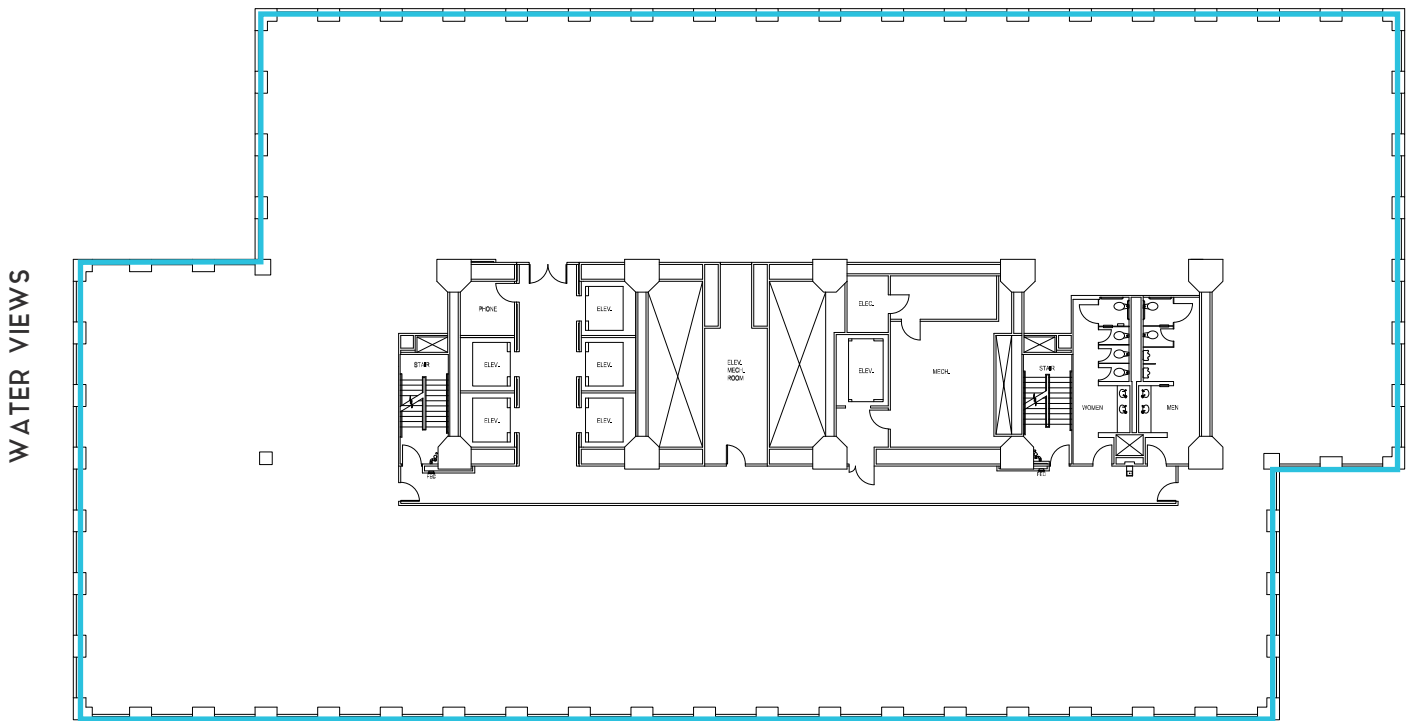


SUITE 1800

21,389 RSF | AVAILABLE NOW

- Full floor
- Open work area

WATER VIEWS



RETURN TO
AVAILABLE
SPACE



DAVID GREENWOOD | 206.838.7635
greenwood@broderickgroup.com

LARRY ALMELEH | 206.910.0859
almeleh@broderickgroup.com

DAMON MCCARTNEY | 206.838.7633
mccartney@broderickgroup.com

LAUREN HALLGRIMSON | 206.948.4440
hallgrimson@broderickgroup.com



CENTURY SQUARE

1501 4TH AVE | SEATTLE, WA

FLOOR 17

21,551 RSF

Floor serves as the transfer floor to the other elevator banks



SUITE 1700

10,826 RSF | AVAILABLE NOW

- Law firm build out.
- Furniture available.

SUITE 1725

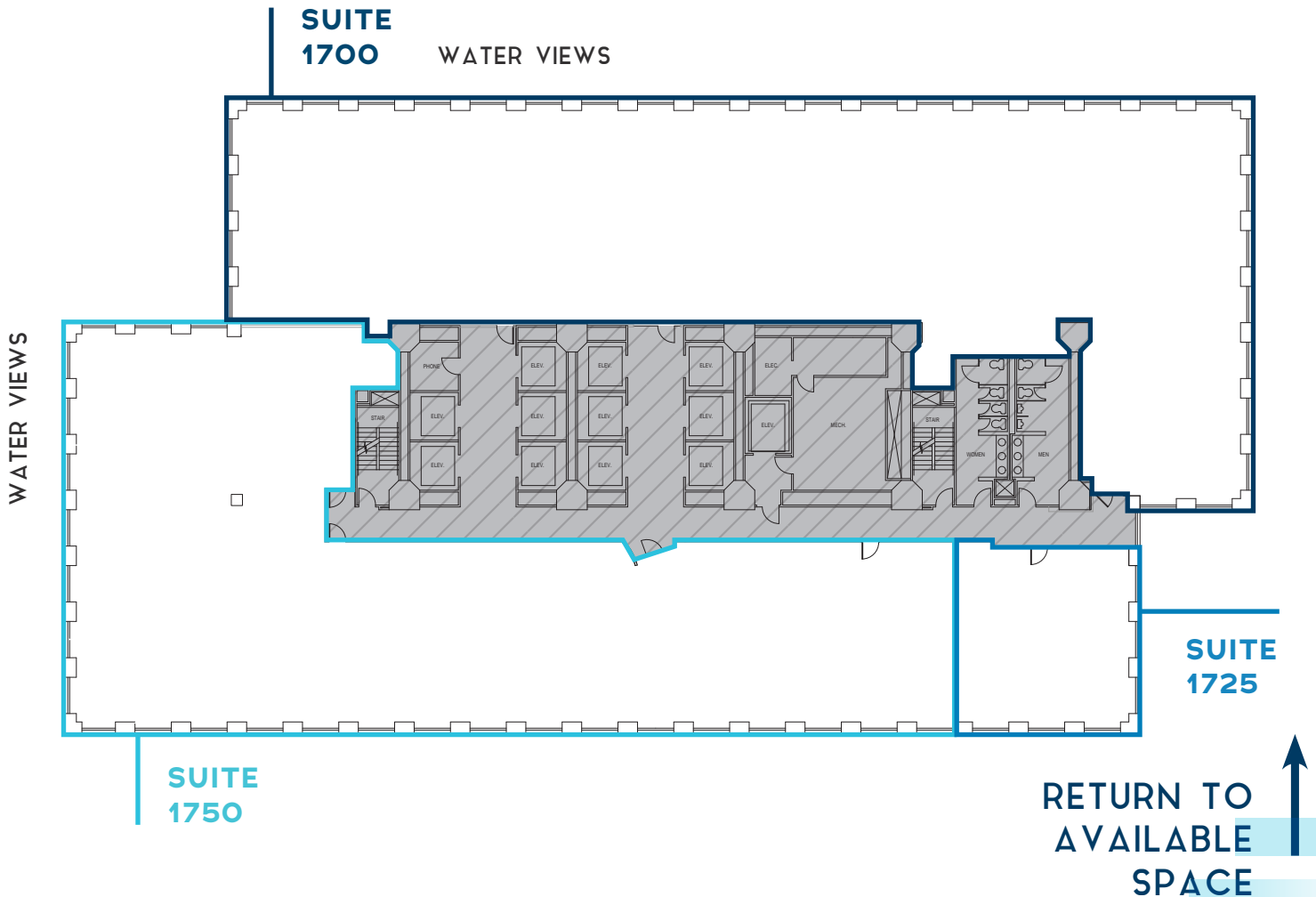
1,399 RSF | AVAILABLE NOW

- Open work area

SUITE 1750

9,326 RSF | AVAILABLE NOW

- Law firm build out



DAVID GREENWOOD | 206.838.7635
greenwood@broderickgroup.com

LARRY ALMELEH | 206.910.0859
almeleh@broderickgroup.com

DAMON MCCARTNEY | 206.838.7633
mccartney@broderickgroup.com

LAUREN HALLGRIMSON | 206.948.4440
hallgrimson@broderickgroup.com



CENTURY SQUARE

1501 4TH AVE | SEATTLE, WA

FLOOR 15

22,285 RSF

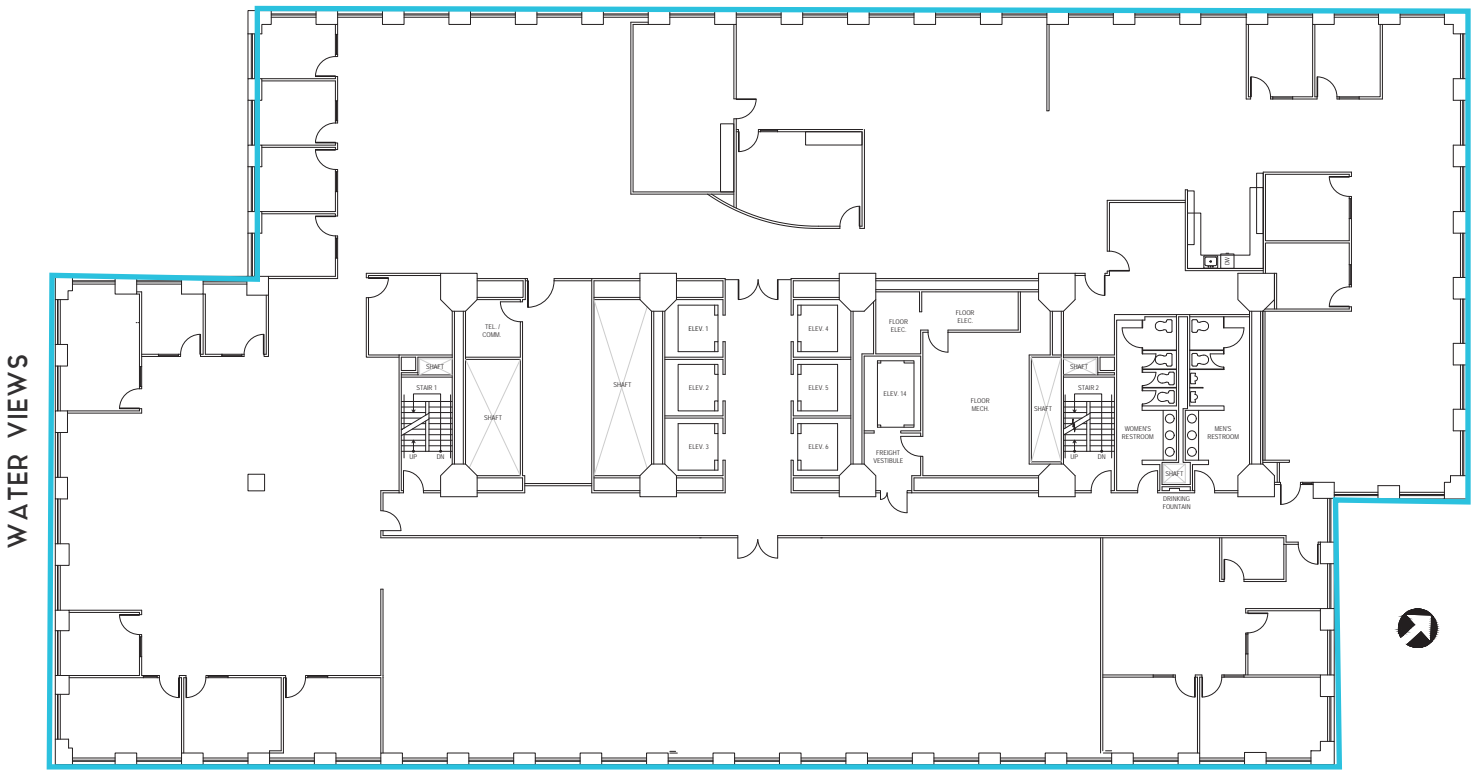


SUITE 1500

22,285 RSF | AVAILABLE ON 9/1/2026, WITH 60 DAYS' NOTICE

- Full floor
- Second generation tech space with water views

WATER VIEWS



RETURN TO
AVAILABLE
SPACE




DAVID GREENWOOD | 206.838.7635
greenwood@broderickgroup.com

LARRY ALMELEH | 206.910.0859
almeleh@broderickgroup.com

DAMON MCCARTNEY | 206.838.7633
mccartney@broderickgroup.com

LAUREN HALLGRIMSON | 206.948.4440
hallgrimson@broderickgroup.com



CENTURY SQUARE

1501 4TH AVE | SEATTLE, WA

FLOOR 13

23,481 RSF



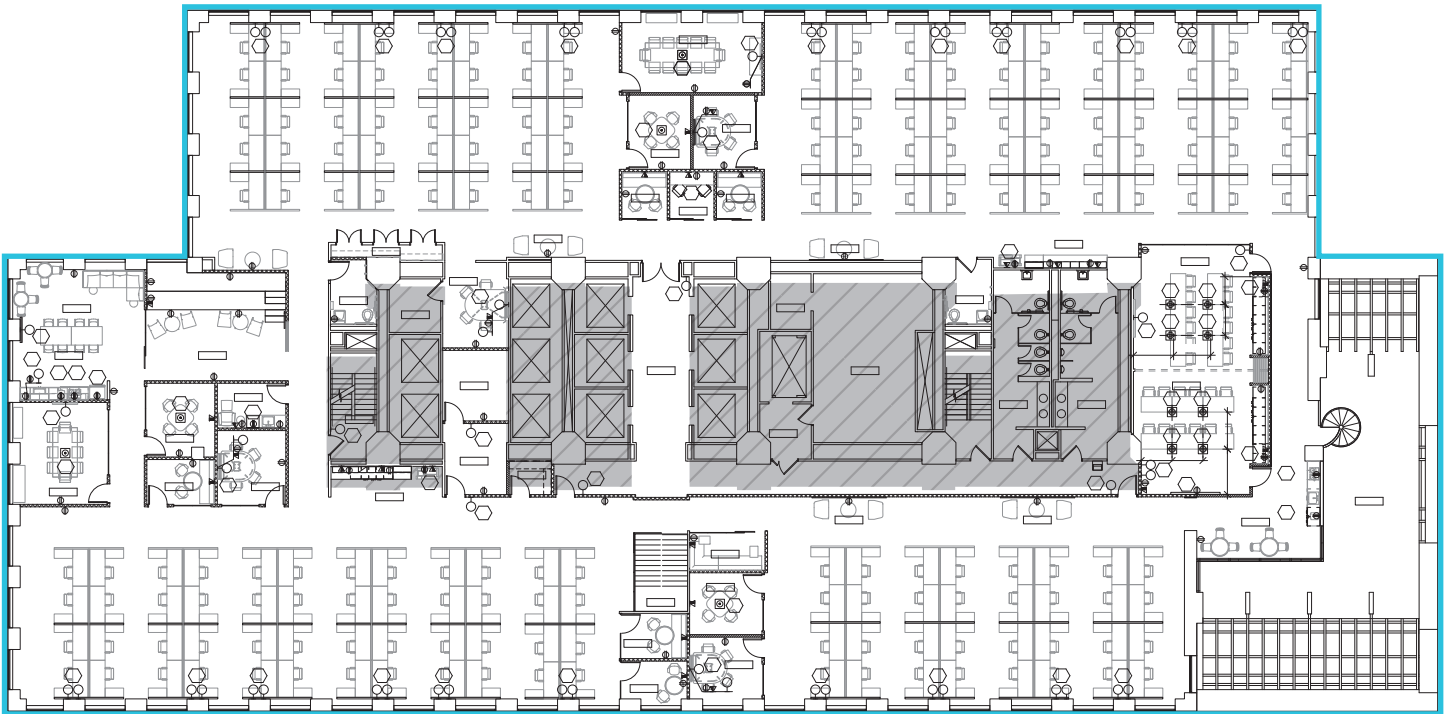
SUITE 1300

23,481 RSF | AVAILABLE NOW

- Full floor
- Open work area
- Interstitial stair connection to Floor 12
- [Virtual Tour](#)
- Unique barrel vault areas
- Fully-furnished
- Plug-n-play

WATER VIEWS

WATER VIEWS



RETURN TO
AVAILABLE
SPACE



DAVID GREENWOOD | 206.838.7635
greenwood@broderickgroup.com

LARRY ALMELEH | 206.910.0859
almeleh@broderickgroup.com

DAMON MCCARTNEY | 206.838.7633
mccartney@broderickgroup.com

LAUREN HALLGRIMSON | 206.948.4440
hallgrimson@broderickgroup.com



CENTURY SQUARE

1501 4TH AVE | SEATTLE, WA

FLOOR 12

23,978 RSF

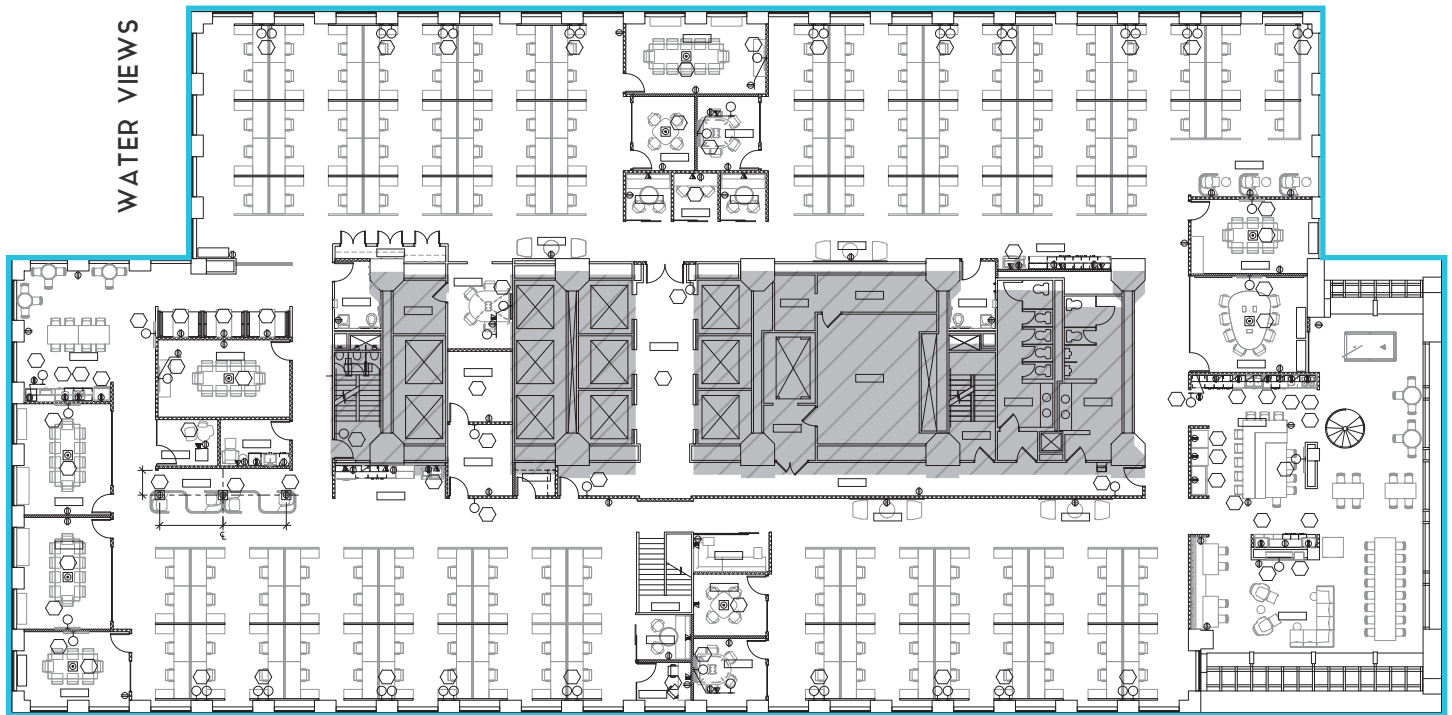


SUITE 1200

23,978 RSF | AVAILABLE NOW

- Full floor
- Open work area
- Interstitial stair connection to Floor 13
- [Virtual Tour](#)
- Unique barrel vault areas
- Fully-furnished
- Plug-n-play

WATER VIEWS



RETURN TO
AVAILABLE
SPACE



DAVID GREENWOOD | 206.838.7635
greenwood@broderickgroup.com

LARRY ALMELEH | 206.910.0859
almeleh@broderickgroup.com

DAMON MCCARTNEY | 206.838.7633
mccartney@broderickgroup.com

LAUREN HALLGRIMSON | 206.948.4440
hallgrimson@broderickgroup.com



CENTURY SQUARE

1501 4TH AVE | SEATTLE, WA

FLOOR 11

24,192 RSF

SUITE 1100

17,801 RSF | AVAILABLE NOW

- Plug & play
- Mix of open area and meeting rooms
- Kitchen/break area
- [Virtual Tour](#)

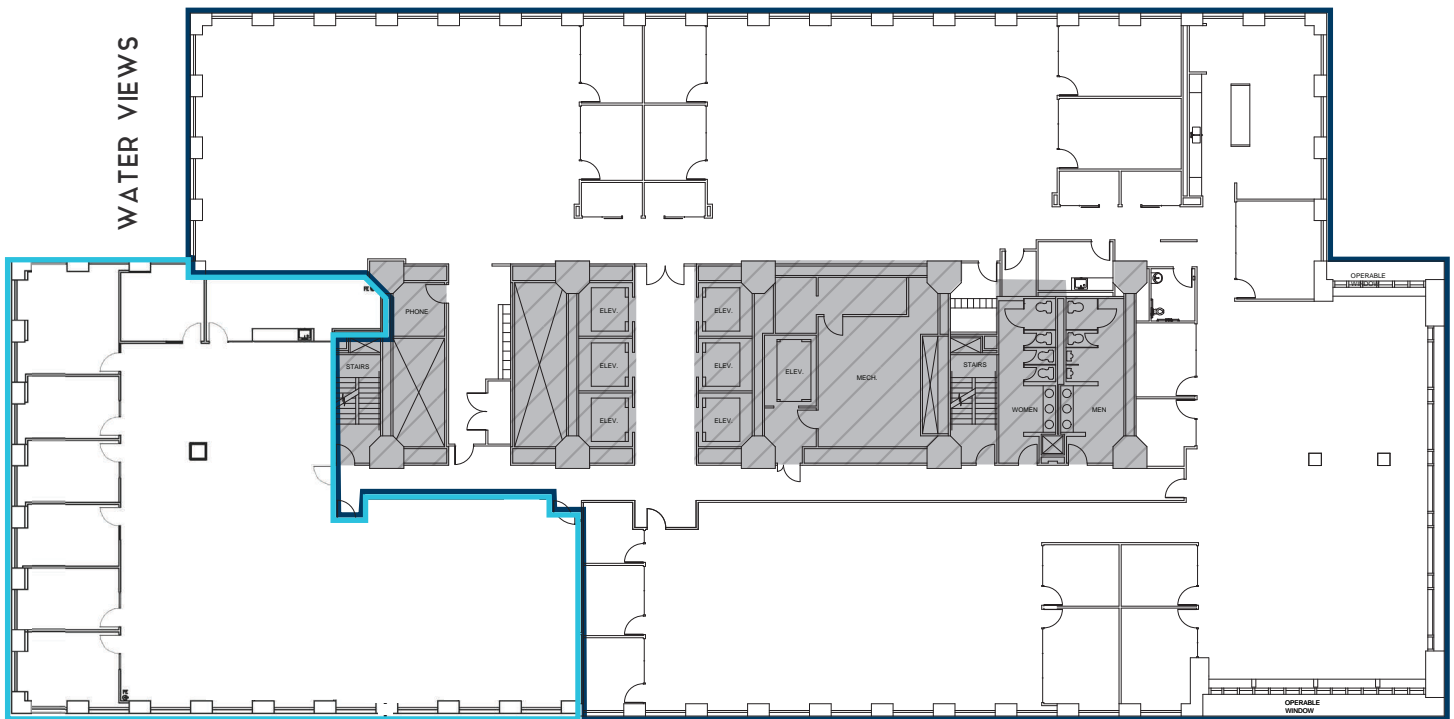
SUITE 1140

6,391 RSF | AVAILABLE NOW

- Open work area
- [Virtual Tour](#)



WATER VIEWS



SUITE 1140

SUITE 1100

RETURN TO AVAILABLE SPACE



DAVID GREENWOOD | 206.838.7635
greenwood@broderickgroup.com

LARRY ALMELEH | 206.910.0859
almeleh@broderickgroup.com

DAMON MCCARTNEY | 206.838.7633
mccartney@broderickgroup.com

LAUREN HALLGRIMSON | 206.948.4440
hallgrimson@broderickgroup.com



CENTURY SQUARE

1501 4TH AVE | SEATTLE, WA

FLOOR 10

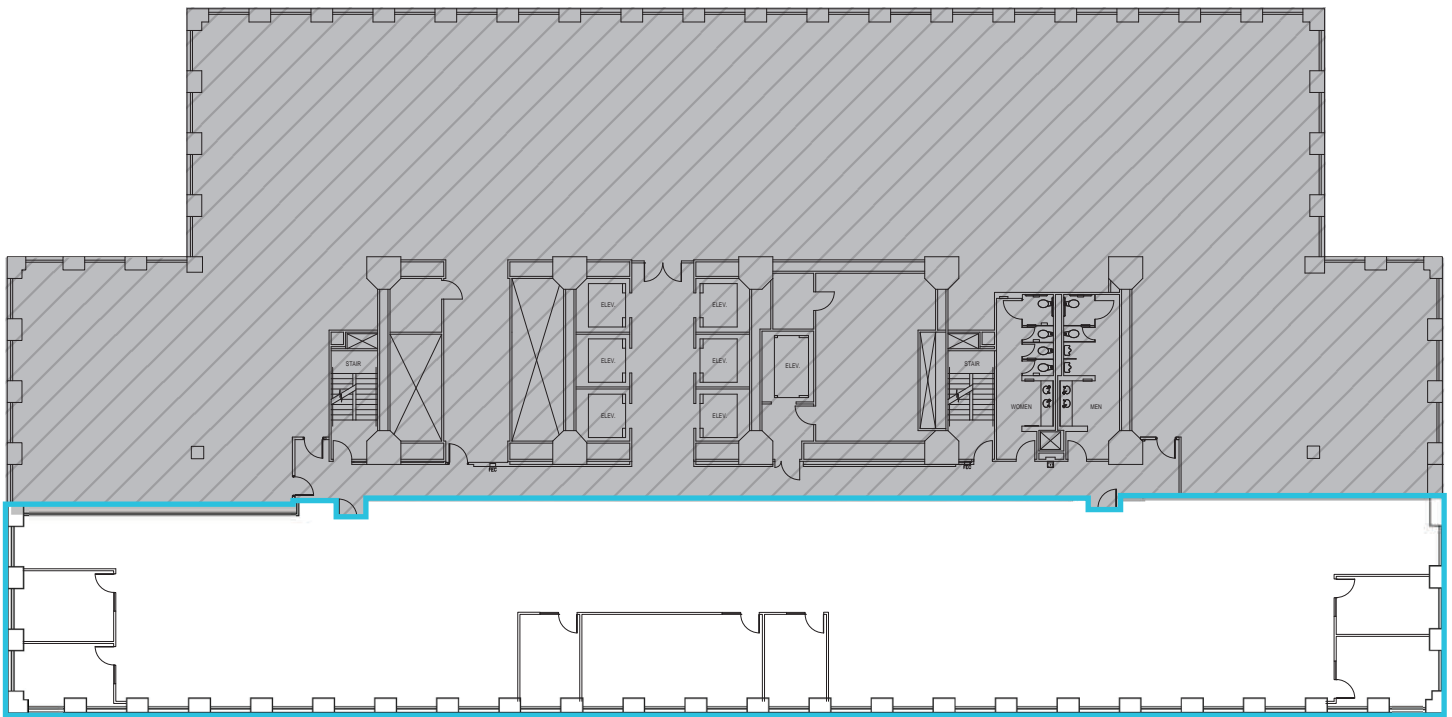
9,647 RSF



SUITE 1010

9,647 RSF | AVAILABLE NOW

- Open work area
- [Virtual Tour](#)



RETURN TO
AVAILABLE
SPACE



DAVID GREENWOOD | 206.838.7635
greenwood@broderickgroup.com

LARRY ALMELEH | 206.910.0859
almeleh@broderickgroup.com

DAMON MCCARTNEY | 206.838.7633
mccartney@broderickgroup.com

LAUREN HALLGRIMSON | 206.948.4440
hallgrimson@broderickgroup.com



CENTURY SQUARE

1501 4TH AVE | SEATTLE, WA

FLOOR 9

24,503 RSF

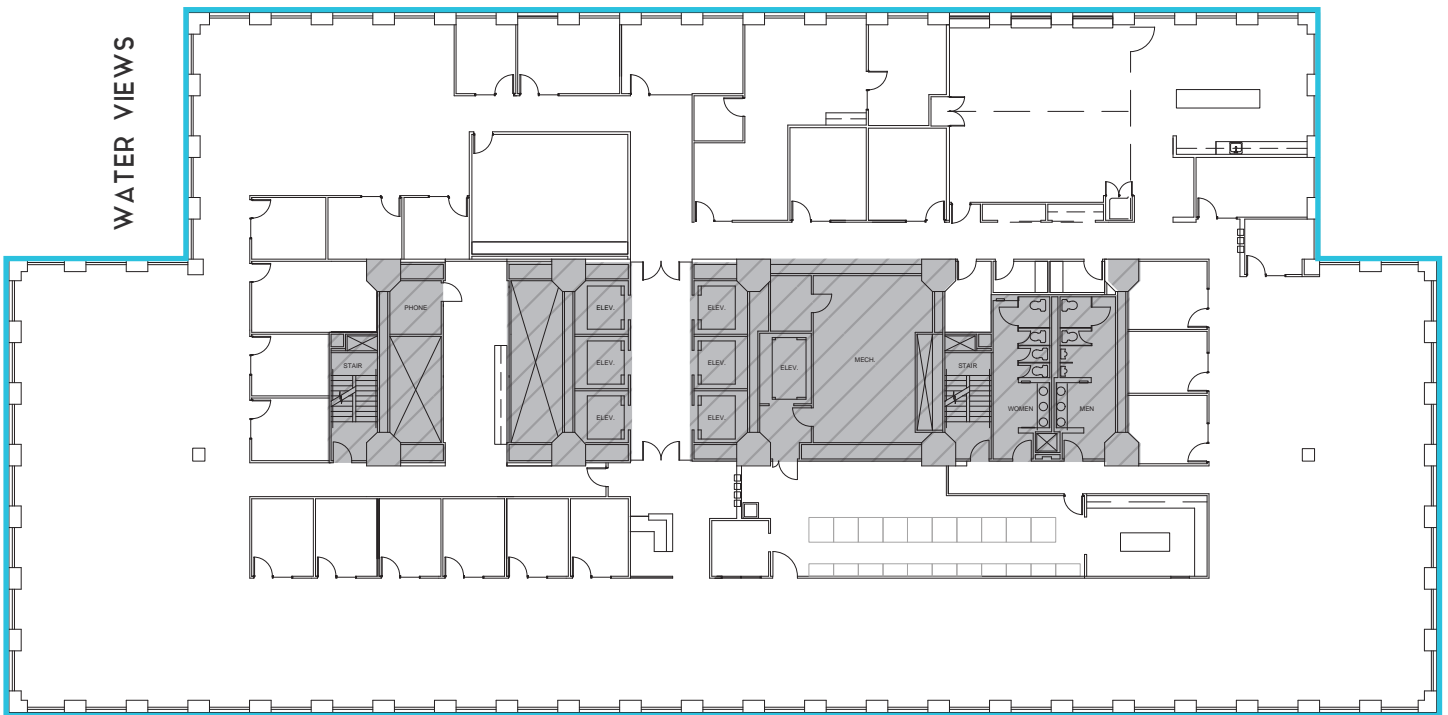


SUITE 900

24,503 RSF | AVAILABLE NOW

- Full floor
- Open work area
- [Virtual Tour](#)

WATER VIEWS



RETURN TO
AVAILABLE
SPACE



DAVID GREENWOOD | 206.838.7635
greenwood@broderickgroup.com

LARRY ALMELEH | 206.910.0859
almeleh@broderickgroup.com

DAMON MCCARTNEY | 206.838.7633
mccartney@broderickgroup.com

LAUREN HALLGRIMSON | 206.948.4440
hallgrimson@broderickgroup.com



CENTURY SQUARE

1501 4TH AVE | SEATTLE, WA

FLOOR 8

24,522 RSF

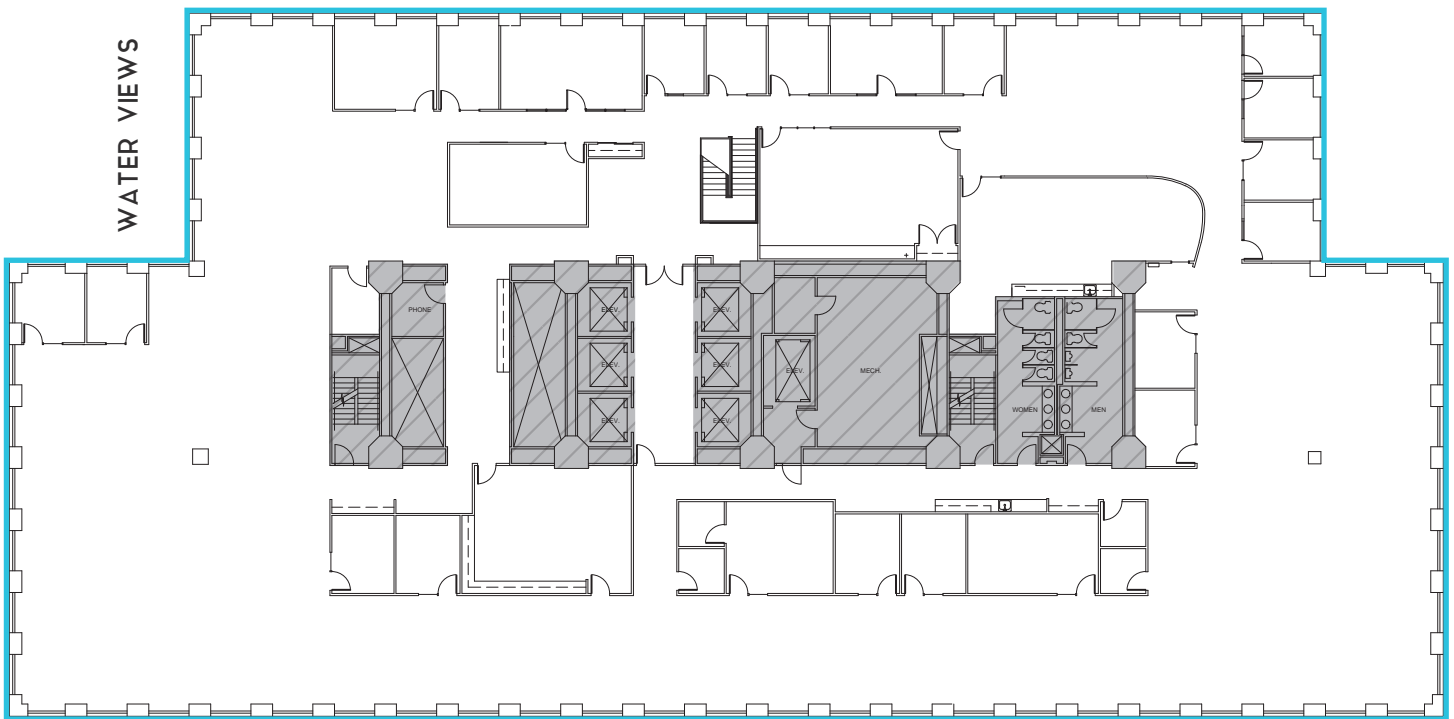


SUITE 800

24,522 RSF | AVAILABLE NOW

- Full floor
- Open work area
- [Virtual Tour](#)

WATER VIEWS



RETURN TO
AVAILABLE
SPACE



DAVID GREENWOOD | 206.838.7635
greenwood@broderickgroup.com

LARRY ALMELEH | 206.910.0859
almeleh@broderickgroup.com

DAMON MCCARTNEY | 206.838.7633
mccartney@broderickgroup.com

LAUREN HALLGRIMSON | 206.948.4440
hallgrimson@broderickgroup.com



CENTURY SQUARE

1501 4TH AVE | SEATTLE, WA

FLOOR 7

18,272 RSF

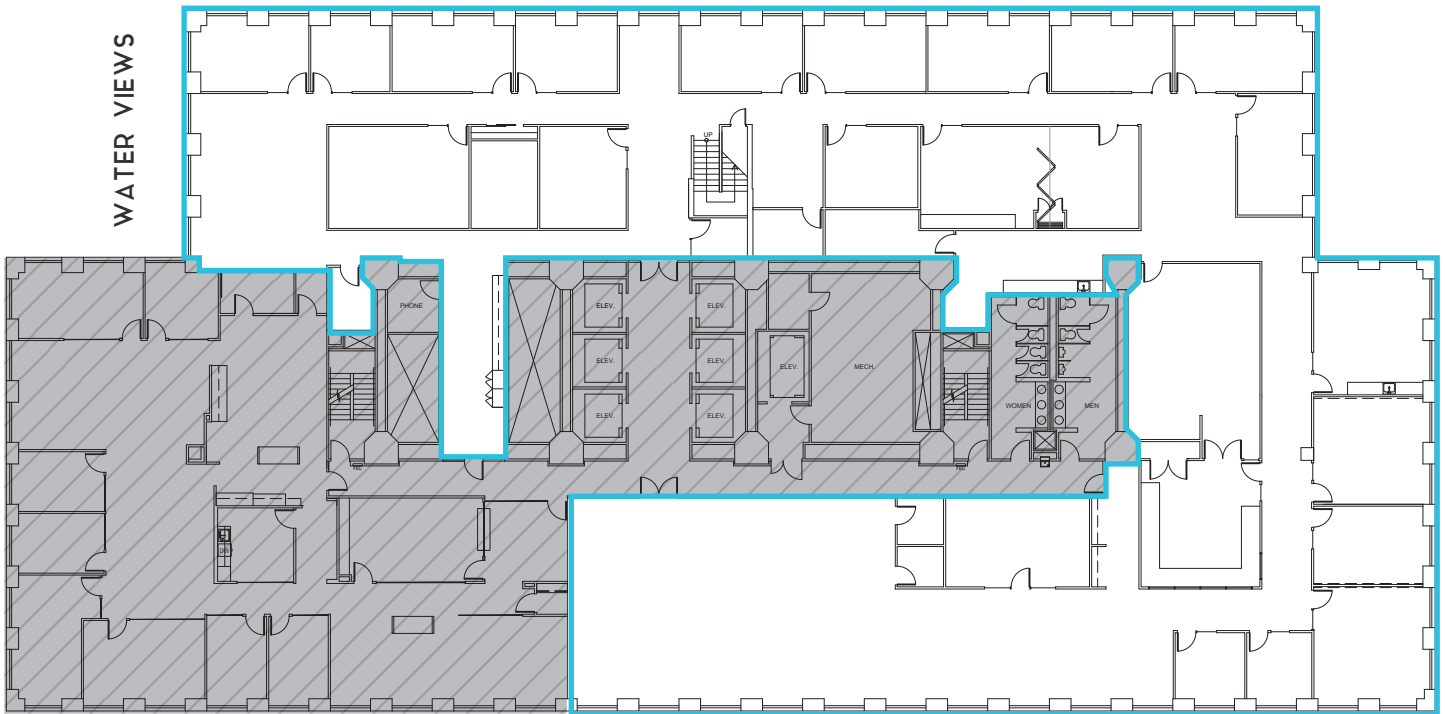


SUITE 700

18,272 RSF | AVAILABLE NOW

- Open work area
- [Virtual Tour](#)

WATER VIEWS



RETURN TO
AVAILABLE
SPACE



DAVID GREENWOOD | 206.838.7635
greenwood@broderickgroup.com

LARRY ALMELEH | 206.910.0859
almeleh@broderickgroup.com

DAMON MCCARTNEY | 206.838.7633
mccartney@broderickgroup.com

LAUREN HALLGRIMSON | 206.948.4440
hallgrimson@broderickgroup.com



CENTURY SQUARE

1501 4TH AVE | SEATTLE, WA

FLOOR 5

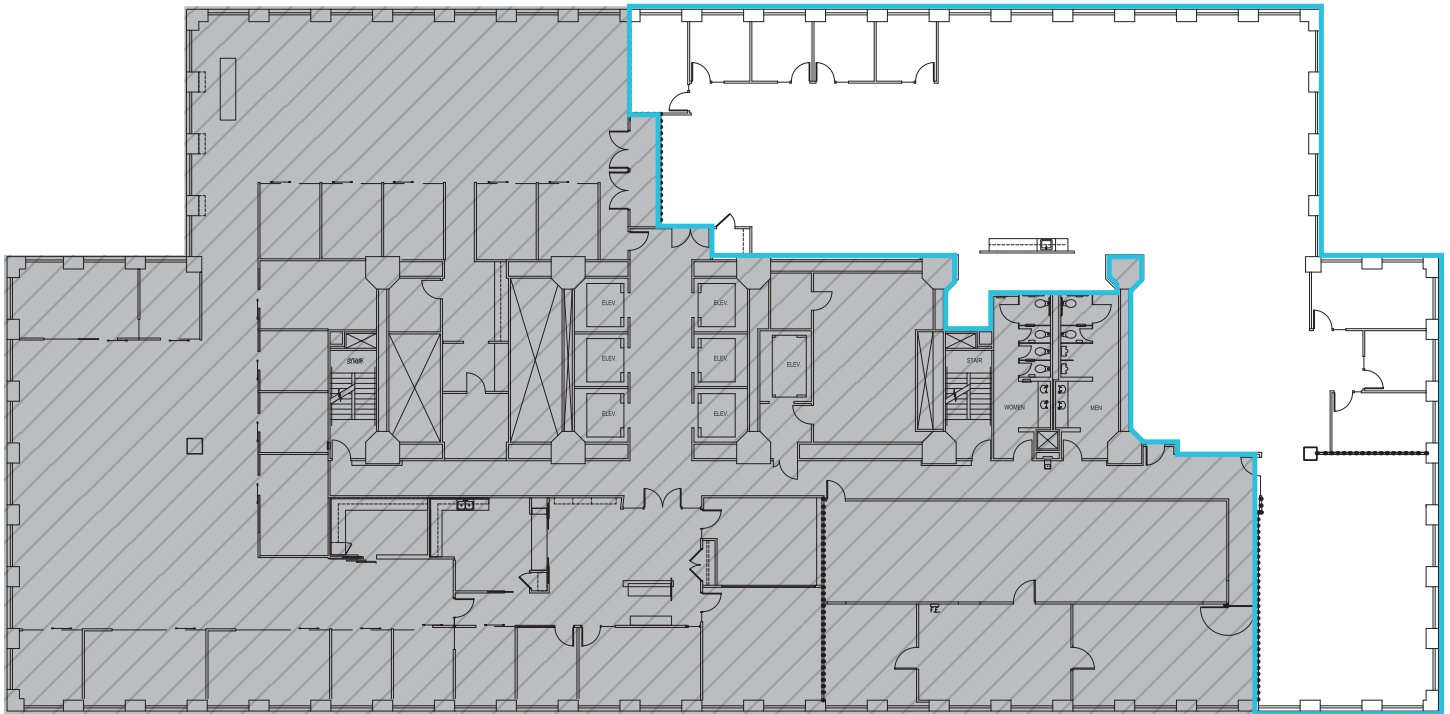
9,159 RSF



SUITE 510

9,159 RSF | AVAILABLE NOW

- Open work area
- [Virtual Tour](#)



RETURN TO
AVAILABLE
SPACE



DAVID GREENWOOD | 206.838.7635
greenwood@broderickgroup.com

LARRY ALMELEH | 206.910.0859
almeleh@broderickgroup.com

DAMON MCCARTNEY | 206.838.7633
mccartney@broderickgroup.com

LAUREN HALLGRIMSON | 206.948.4440
hallgrimson@broderickgroup.com



CENTURY SQUARE

1501 4TH AVE | SEATTLE, WA

FLOOR 4

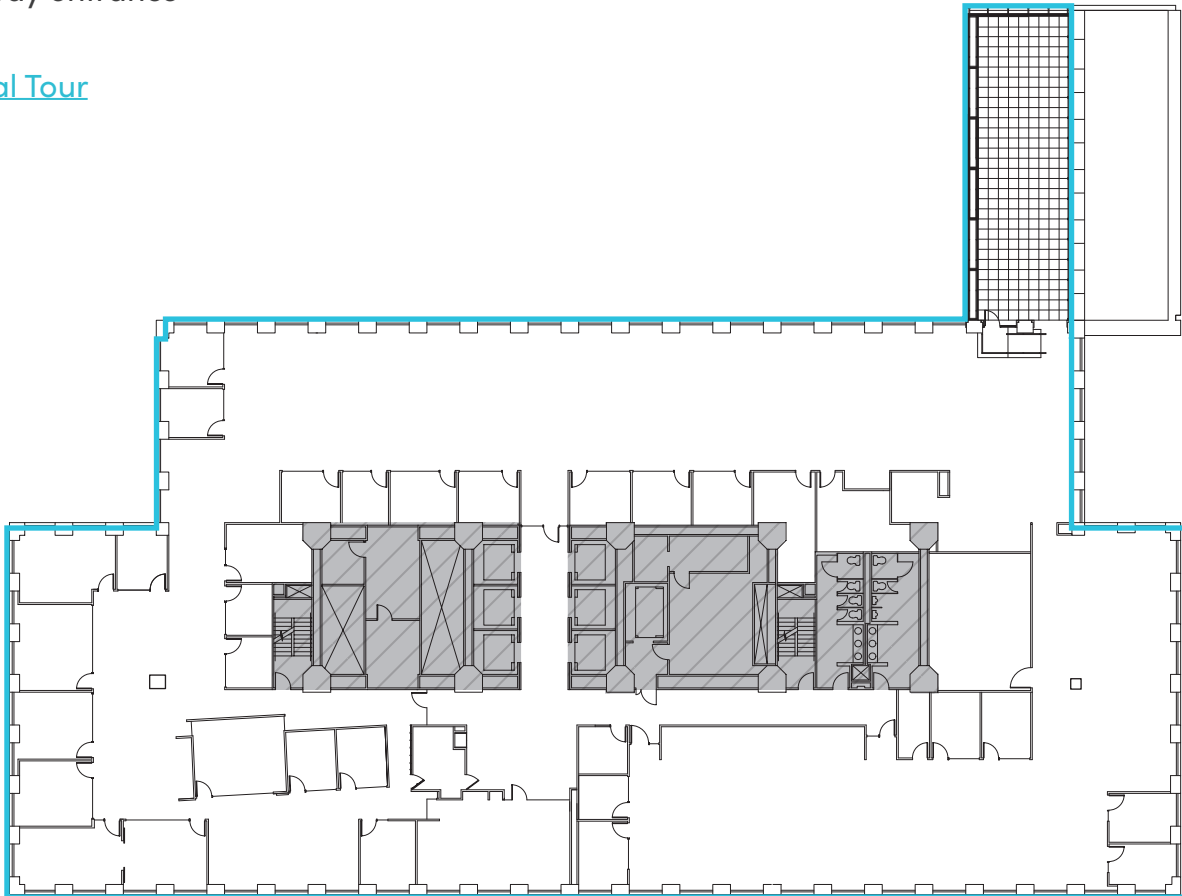
25,314 RSF



SUITE 400

25,314 RSF | AVAILABLE NOW

- Open work area
- Tech space
- Hallway entrance
- Deck
- [Virtual Tour](#)



RETURN TO
AVAILABLE
SPACE



DAVID GREENWOOD | 206.838.7635
greenwood@broderickgroup.com

LARRY ALMELEH | 206.910.0859
almeleh@broderickgroup.com

DAMON MCCARTNEY | 206.838.7633
mccartney@broderickgroup.com

LAUREN HALLGRIMSON | 206.948.4440
hallgrimson@broderickgroup.com



CENTURY SQUARE

1501 4TH AVE | SEATTLE, WA

BRODERICK
• GROUP •

DAVID GREENWOOD

206.838.7635

greenwood@broderickgroup.com

LARRY ALMELEH

206.910.0859

almeleh@broderickgroup.com

DAMON MCCARTNEY

206.838.7633

mccartney@broderickgroup.com

LAUREN HALLGRIMSON

206.948.4440

hallgrimson@broderickgroup.com

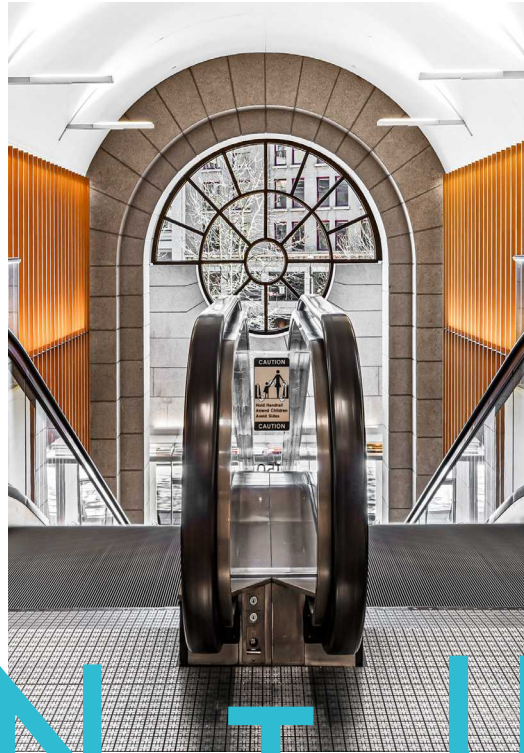
BRODERICK
• GROUP •



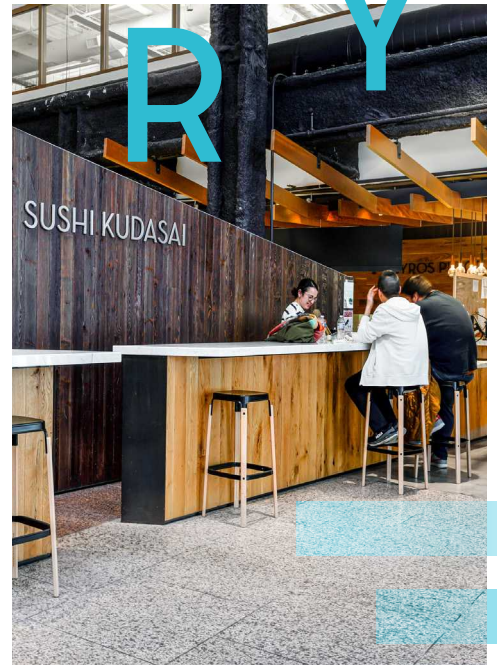
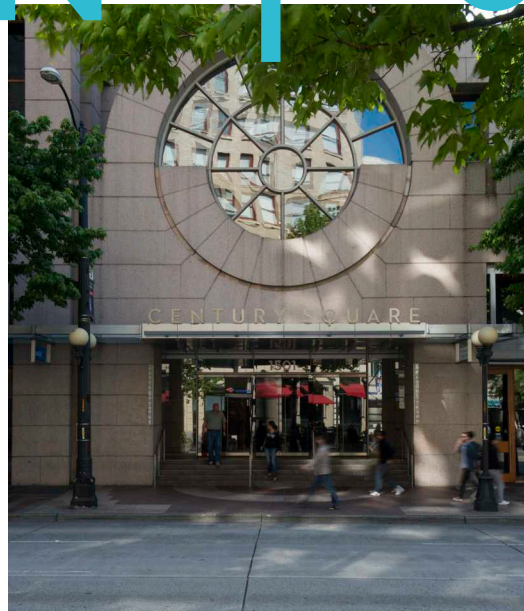
CENTURY SQUARE



1501 4TH AVE | SEATTLE, WA



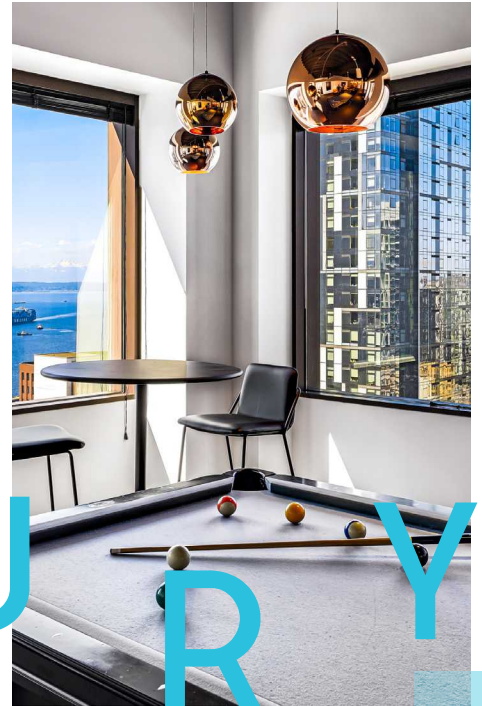
C E N T U R Y



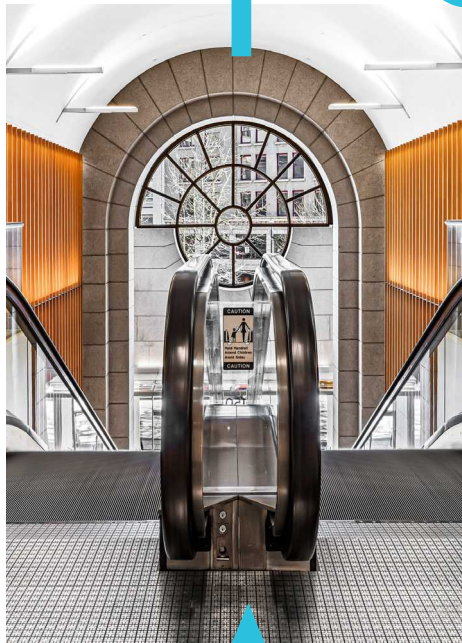
WHERE CONVENIENCE MEETS OPPORTUNITY

Positioned in downtown Seattle's prime location, Century Square places you within walking distance of top-tier dining, shopping, and entertainment.

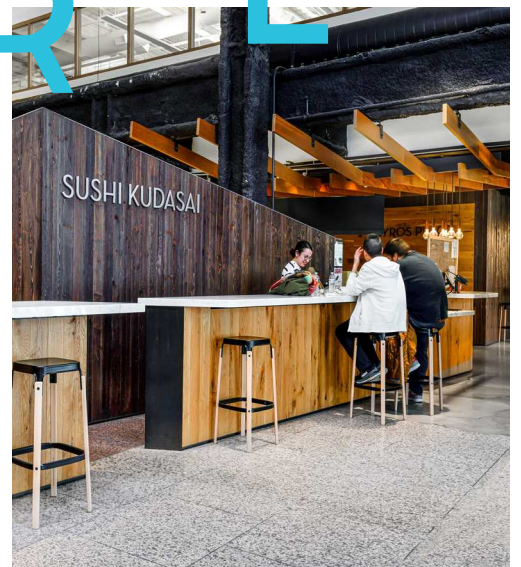
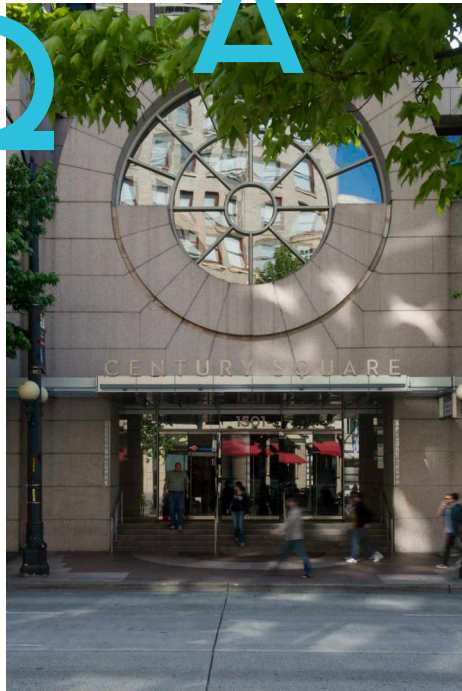
With effortless access to public transit, light rail, and major highways, including Highway 99 and I-5, getting around is easy.



CENTURY



SQUARE





CENTURY SQUARE

1501 4TH AVE | SEATTLE, WA

FLOOR 29

5,858 RSF



SUITE 2900

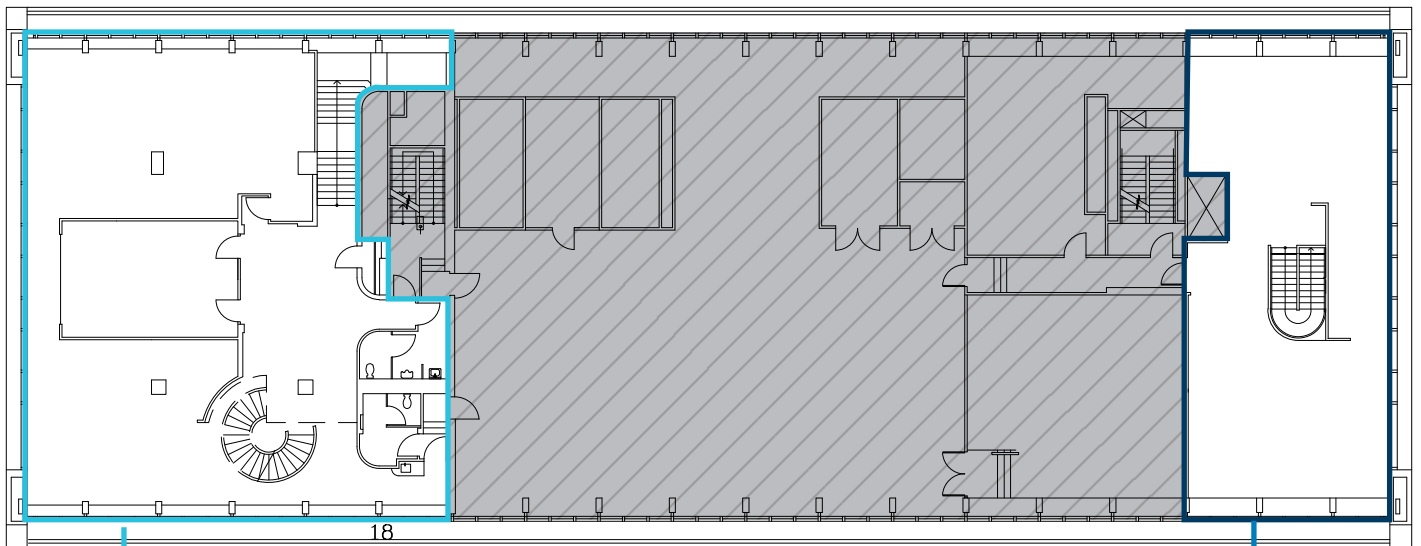
3,855 RSF | AVAILABLE NOW

- Open work area

SUITE 2880

2,003 RSF | AVAILABLE NOW

- Open work area



SUITE
2900

SUITE
2880

RETURN TO
AVAILABLE
SPACE



DAVID GREENWOOD | 206.838.7635
greenwood@broderickgroup.com

LARRY ALMELEH | 206.910.0859
almeleh@broderickgroup.com

DAMON MCCARTNEY | 206.838.7633
mccartney@broderickgroup.com

LAUREN HALLGRIMSON | 206.948.4440
hallgrimson@broderickgroup.com



CENTURY SQUARE

1501 4TH AVE | SEATTLE, WA

FLOOR 30

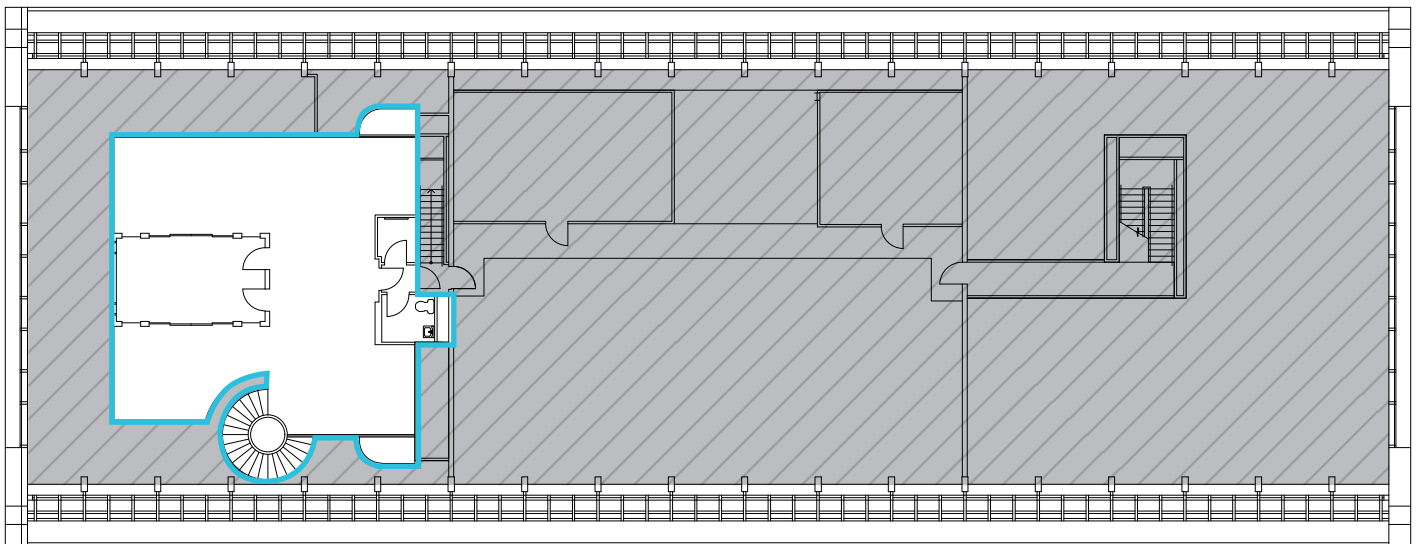
1,851 RSF



SUITE 3000

1,851 RSF | AVAILABLE NOW

- Open work area



RETURN TO
AVAILABLE
SPACE 



DAVID GREENWOOD | 206.838.7635
greenwood@broderickgroup.com

LARRY ALMELEH | 206.910.0859
almeleh@broderickgroup.com

DAMON MCCARTNEY | 206.838.7633
mccartney@broderickgroup.com

LAUREN HALLGRIMSON | 206.948.4440
hallgrimson@broderickgroup.com