



CONTACT

KIM MILLET
509.606.5087
kim@tokcommercial.com

HIGHLIGHTS

- 1,200 SF building on 1.36 acres
- Retail frontage with functional back office
- Ideal for owner-user or investment opportunity
- Prime frontage on Highway 291 with Strong visibility
- Business Zoning - multiple commercial use potential
- Additional utility connections near street for expansion for additional income-producing use

DETAILS

SALE INFORMATION

SPACE	SIZE	SALE PRICE
Building	1,200 SF	\$499,999

LEASE INFORMATION

SPACE	SIZE	RATE
Building	1,200 SF	Negotiable

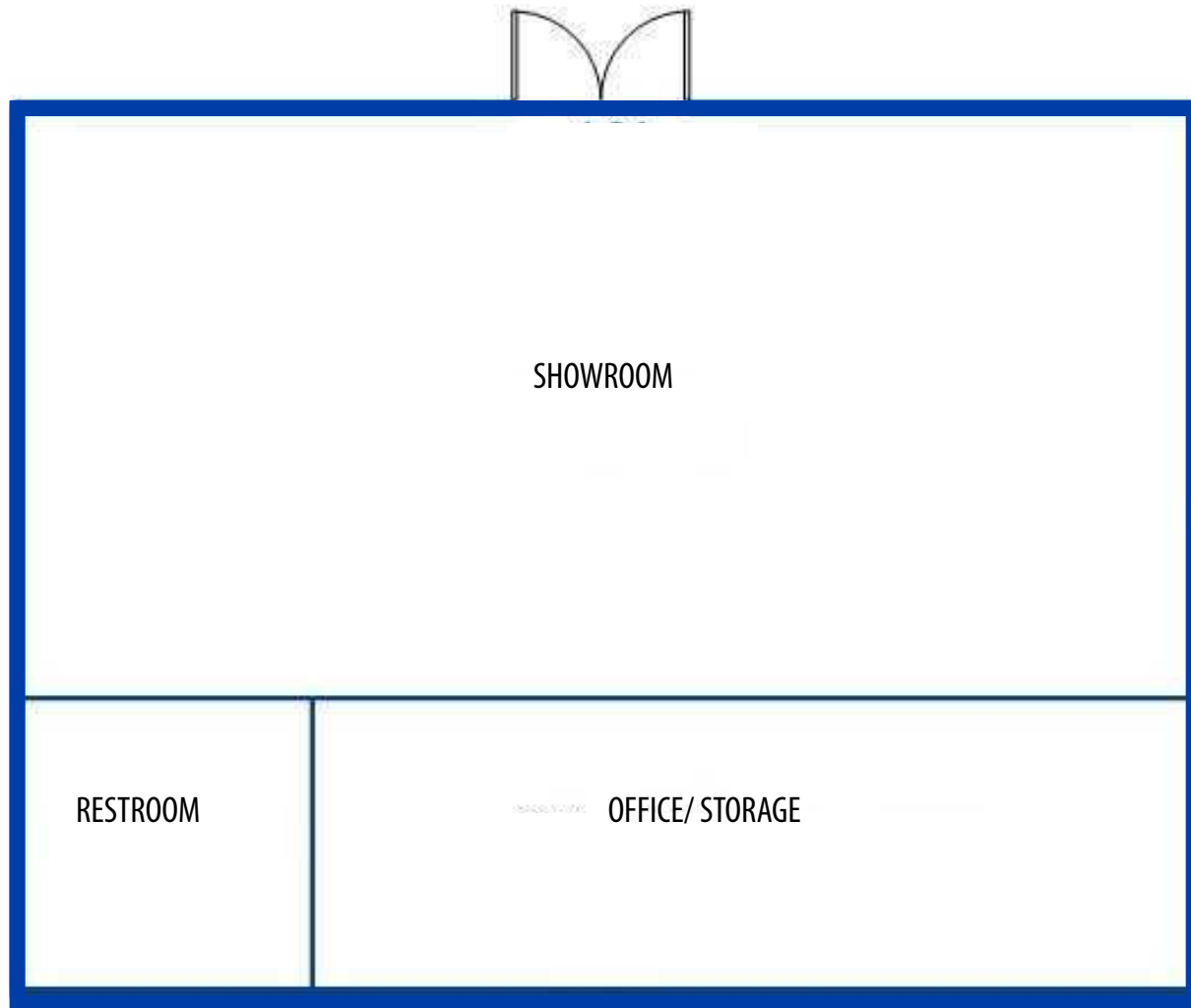
BLDG TYPE	Office/Retail	ZONING	BC
BLDG SIZE	1,200 SF	LEASE TYPE	NNN's
LOT SIZE	1.36 AC	PARCEL NO	0863319

UPDATED: 4.15.2026

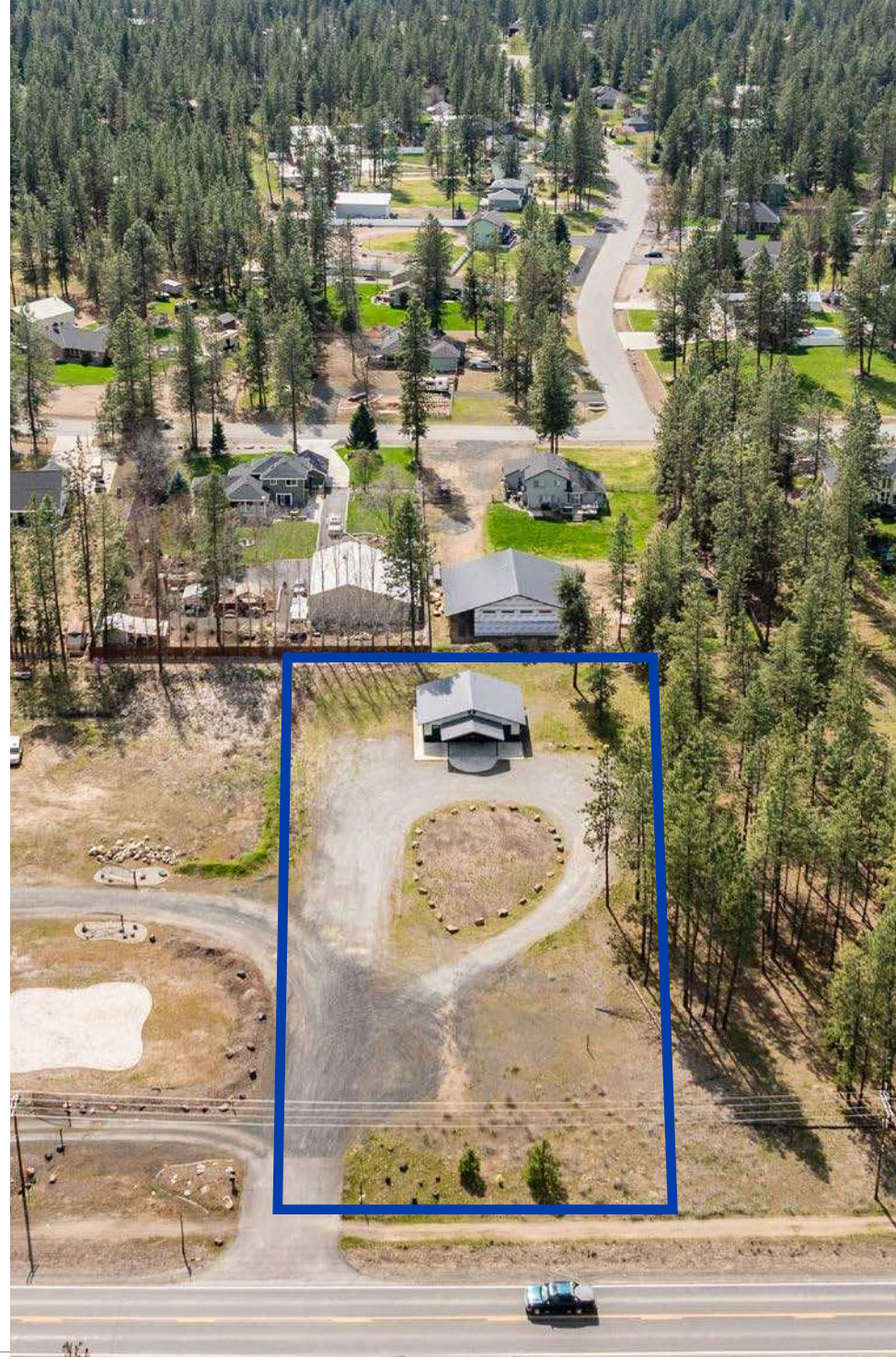
THIS PROPERTY IS EXCLUSIVELY MARKETED BY TOK INLAND NORTHWEST LLC DBA TOK COMMERCIAL

This information was obtained from sources believed reliable but cannot be guaranteed. Any opinions or estimates are used for example only.

FLOOR PLANS



BUILDING
1,200 SF

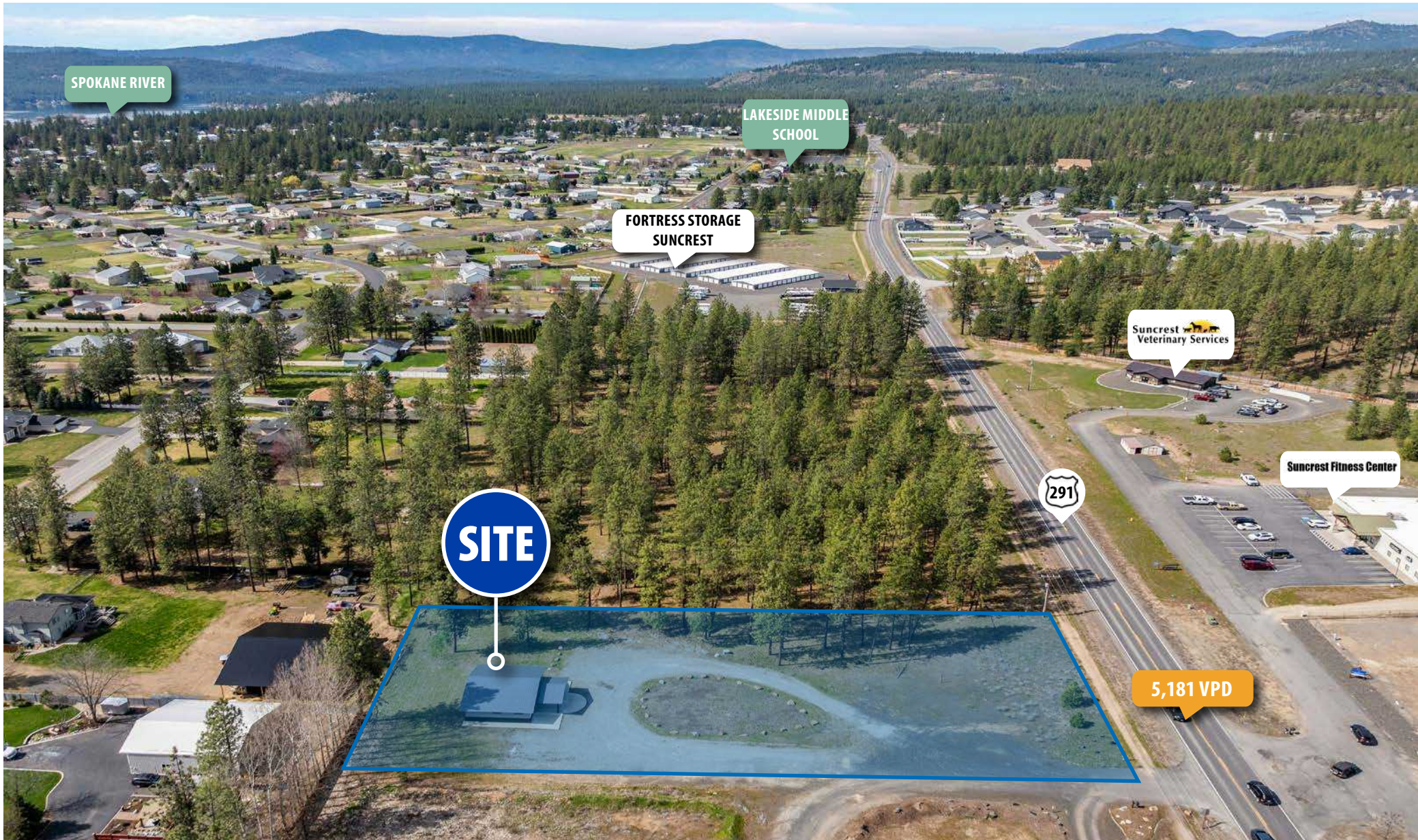


6063 B HWY 291

TOXCOMMERCIAL.COM

SITE MAP

EASY ACCESS OFF HIGHWAY 291



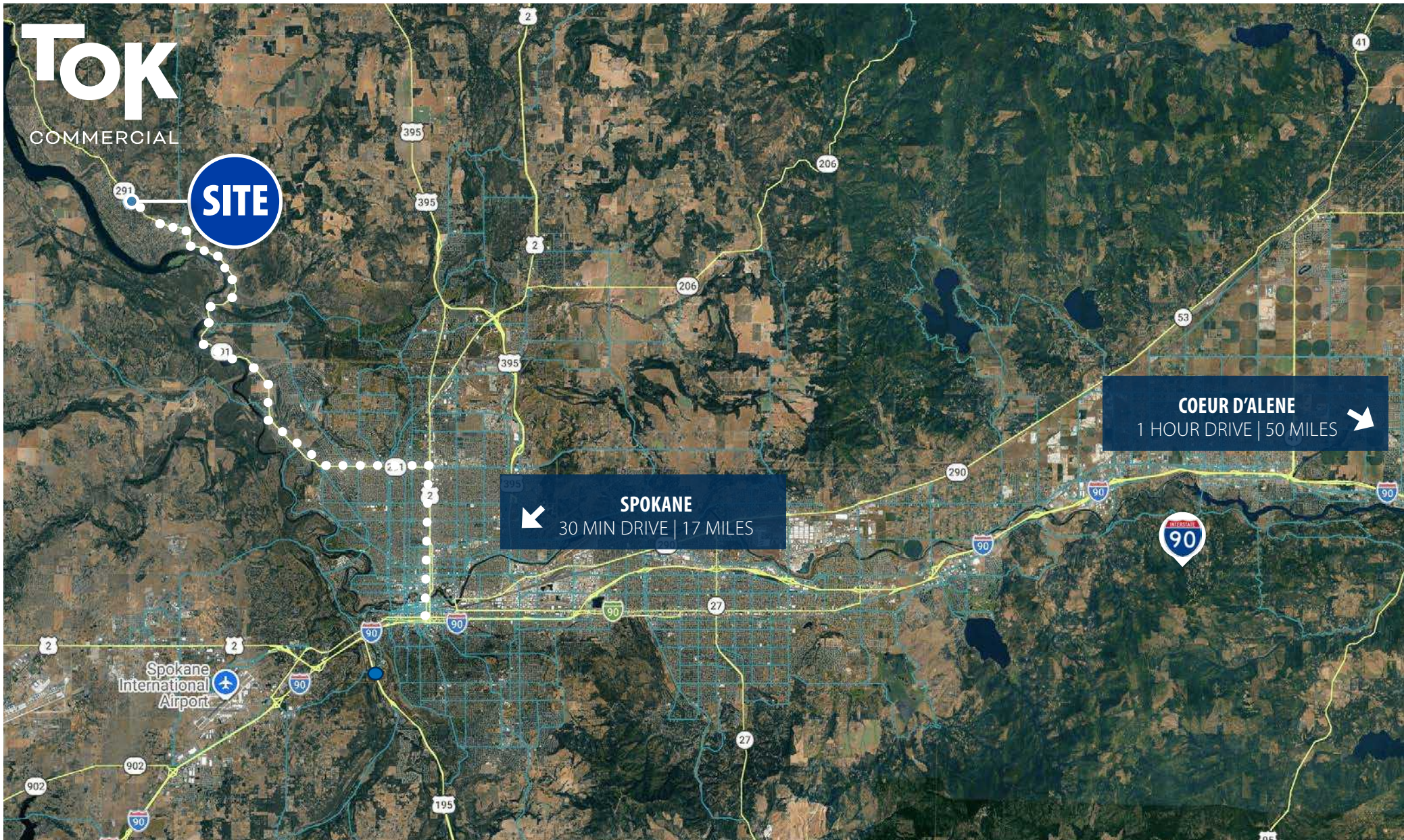
6063 B HWY 291

TOXCOMMERCIAL.COM

SITE MAP



AERIAL MAP



6063 B HWY 291

TOXCOMMERCIAL.COM