

equipment/appliance schedule									
mark	quantity	description	manufacturer	model #	size (W x D x H)	btu/h	amps	ordered by	notes
01	1	walk-in cooler	TBD	TBD	TBD				
02	1	3 compartment sink	TBD	TBD	TBD				
03	1	mop sink	TBD	TBD	TBD				
04	1	dirty dish table	TBD	TBD	TBD				
05	1	dish washer	TBD	TBD	TBD				
06	1	clean dish table	TBD	TBD	TBD				
07	1	prep table	TBD	TBD	TBD				
08	1	prep sink	TBD	TBD	TBD				
09	1	oven	TBD	TBD	TBD				
10	2	induction burner	TBD	TBD	TBD				
11	2	juicer	TBD	TBD	TBD				
12	tbd	cold line tbd	TBD	TBD	TBD				
13	tbd	cold line tbd	TBD	TBD	TBD				
14	tbd	cold line tbd	TBD	TBD	TBD				
15	1	hand sink	TBD	TBD	TBD				
16	1	espresso machine	TBD	TBD	TBD				
17	1	knock box	TBD	TBD	TBD				
18	1	grinder	TBD	TBD	TBD				
19	1	keg cooler	TBD	TBD	TBD				
20	1	ice cream freezer	TBD	TBD	TBD				
21	1	under counter dish washer	TBD	TBD	TBD				
22	1	dump sink	TBD	TBD	TBD				
23	2	hand sink	TBD	TBD	TBD				
24	2	blender	TBD	TBD	TBD				
25	2	ice well	TBD	TBD	36"				
26	2	ice bin	TBD	TBD	TBD				
27	2	refrigerated prep table	TBD	TBD	TBD				
28	1	ice well	TBD	TBD	24"				

restaurant operations

anticipated maximum meals per day: 300
 hours of operation: 7am-7pm, 7 days per week
 no hot holding equipment proposed.

finish schedule

floors:
 kitchen: black rubber mats over epoxy floor or tile
 dining: seal (e) concrete
 restroom: seal (e) concrete

walls:
 kitchen: tile or FRP
 restroom: painted gwb (satin or semi-gloss)
 all else: new paint on (e) and new gwb walls

baseboards:
 kitchen & restroom: rubber or tile covered base trim
 all else: painted wood base trim

ceilings:
 (e) concrete above

floor plan notes

- public health - seattle & king county inspection required upon completion of work prior to opening.
- no changes shall be made without health department approval.
- contractor shall verify and coordinate door rough opening sizes
- the entire building features code-complying fire sprinklers.

occupant load calculations					
ROOM	TYPE	SF	AREA TYPE	LOAD FACTOR	QTY OCCUPANTS
walk-in cooler	storage	73	gross	300	1
restrooms & reception	business area	571	gross	130	5
bartender, scullery & serving area	commercial kitchen	786	gross	200	4
bar and seating areas	assembly, tables & chairs, unconcentrated	842	net	15	57
booths	assembly, fixed		seating (1 occup: 24")		10
standing bar	assembly, standing	69	net	5	14
total occupants					91

accessibility requirements

FIXED SEATING
 SBC 1108.2.2.1 4-25 fixed seating in assembly areas requires 1 wheelchair space
 7 fixed seats provided 1 wheelchair space required & provided

DINING AREAS
 SBC 1108.2.9.1 Min. 5% (but not less than 1) of dining surfaces for the seating and standing spaces shall be accessible, located on an accessible route, and distributed through the facility.

Total Seating: 74 * .05 = 4 accessible surfaces req'd
 4 accessible surfaces provided, see plan for locations

CLEAR FLOOR SPACE AT ACCESSIBLE SURFACES

menu

TBD

door schedule								
#	location	door size (w x h)	type	material	glazing	hardware	energy code	notes
101-2	lobby	6'-0" X 7'-0"	dbl. swing	custom storefront	yes			
103	restroom	3'-0" X 7'-0"	swing	pltd. solid wood	no			
104	(e) relocated entry	(e) 6'-5" X 7'-0"	(e) dbl. swing	(e) mtl storefront	(e) glazing			(e) storefront doors to be relocated; must comply with SEC C101.4.3, which requires U=0.60 or better and max. SHGC 0.35 per Table C402.2.

construction assemblies

walls:

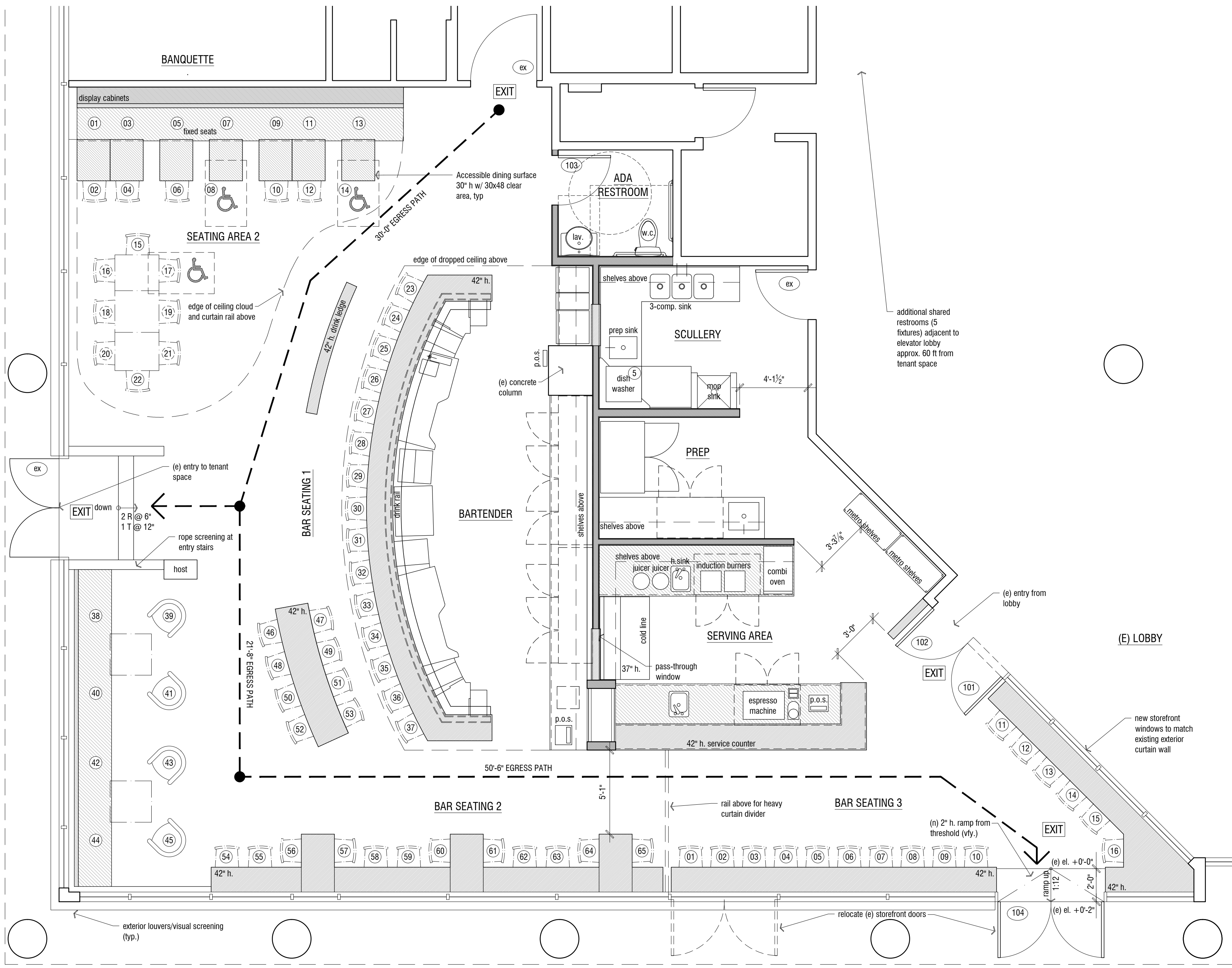
W1 new framed walls:
 - finish per schedule
 interior: 1/2" gypsum wallboard
 - 3/8" steel studs @ 16" o.c.
 - 1/2" gypsum wallboard
 - finish per schedule

seat count

seating area1: 8
 seating area2: 22
 bar seating1: 23
 bar seating2: 12
 bar seating3: 16
total: 81 seats

legend

- (e) wall to demolish
- (e) wall to remain
- new wall (refer to assemblies)
- new casework/tabletops
- furniture (furnished by owner, installed by g.c.)
- undercounter equipment
- EXIT exit sign



construction drawings 17 feb 2015

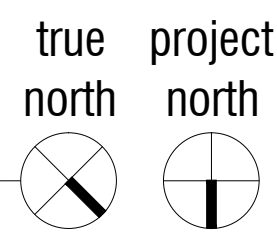


atelier drome, llp
 architecture
 85 columbia st
 seattle, wa 98104
 www.atelierdrome.com

navy strength

2505 2nd Ave #102
 Seattle, WA 98121

2.0
 floor plan & schedules



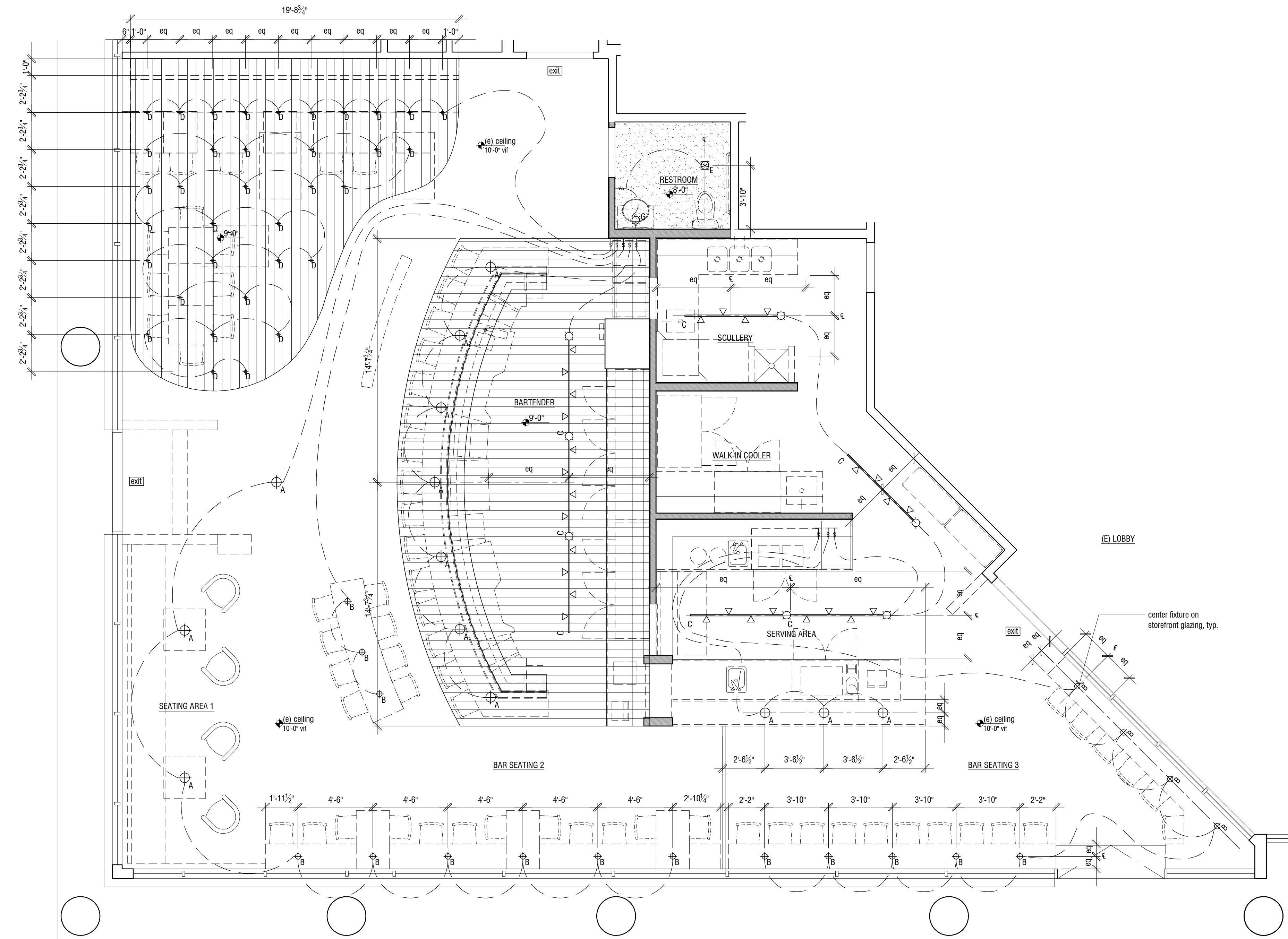
1 navy strength: floor plan
 1/4" = 1'-0"

light fixture schedule							
mark	description	manufacturer	model #	size (W x D x H)	finish	mounting height	notes
A	large pendant	TBD	TBD	TBD			
B	small pendant		TBD	TBD			
C	dimnable track-light track	Juno	trac-master JU-R711		black	TBD	per lighting budget
	associated fixtures	Juno	electrician suggest		black	TBD	per lighting budget
D	mini pendant	TBD	TBD	TBD		N/A	moisture proof over wet locations
E	exhaust fan	TBD	electrician suggest		white	N/A	fan with light
F	not used						
G	wall sconce	TBD					or approved alternate

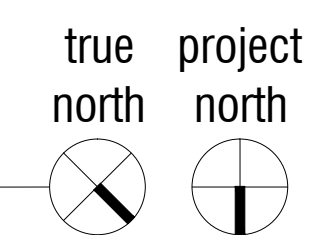
symbol	description
	ceiling pendant light fixture
	surface-mounted wall light fixture
	surface-mounted light track & fixture(s)
	recessed can
	utility led light
	exhaust fan
	dimnable switch
	duplex outlet
	thermostat
	backlit exit sign
	recessed step light

symbol	description
	gypsum board, ptd
	open to (e) structure, no ceiling
	dropped wood ceiling

- general lighting & electrical notes**
1. builder shall verify electrical requirements for all equipment & provide electrical service as necessary.
 2. electrician shall obtain all electrical permits and perform lighting load calculations per code.
 3. light fixture layout and selections are pending final light load calculations from electrician. contact Atelier Drome if changes must be made to layout, fixture selections or quantities prior to commencing electrical work.
 4. use of light fixtures other than those specified by Atelier Drome shall be approved by Atelier Drome prior to ordering.
 5. health department requires all lights over food prep areas must be shielded.
 6. Confirm all speaker locations (if any) with owner.
 7. Confirm all mounting heights with architect prior to ordering.



1 navy strength: reflected ceiling plan
1/4" = 1'-0"



construction drawings 11 feb 2015



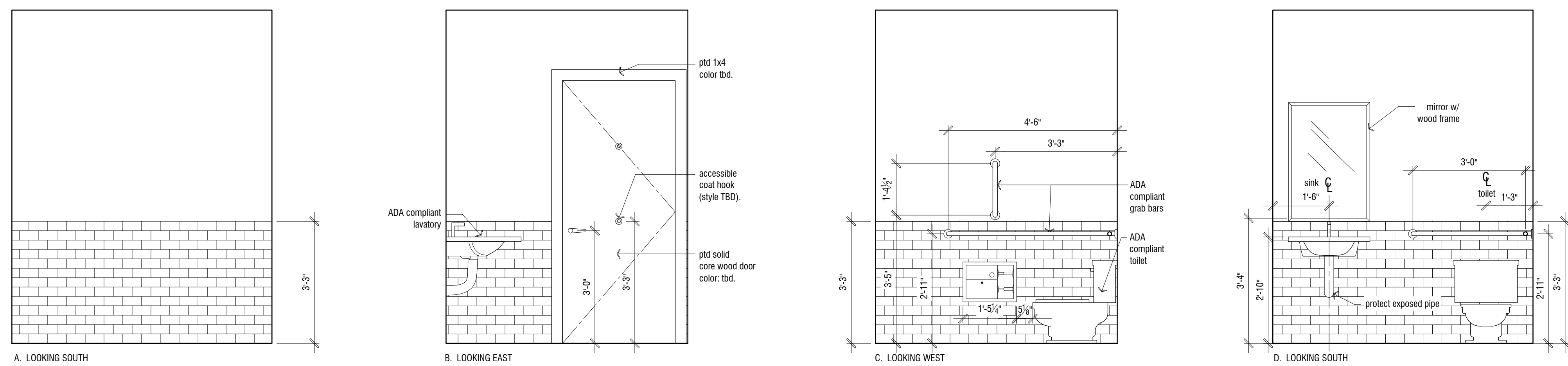
atelier drome, llp
architecture

85 columbia st
seattle, wa 98104
www.atelierdrome.com

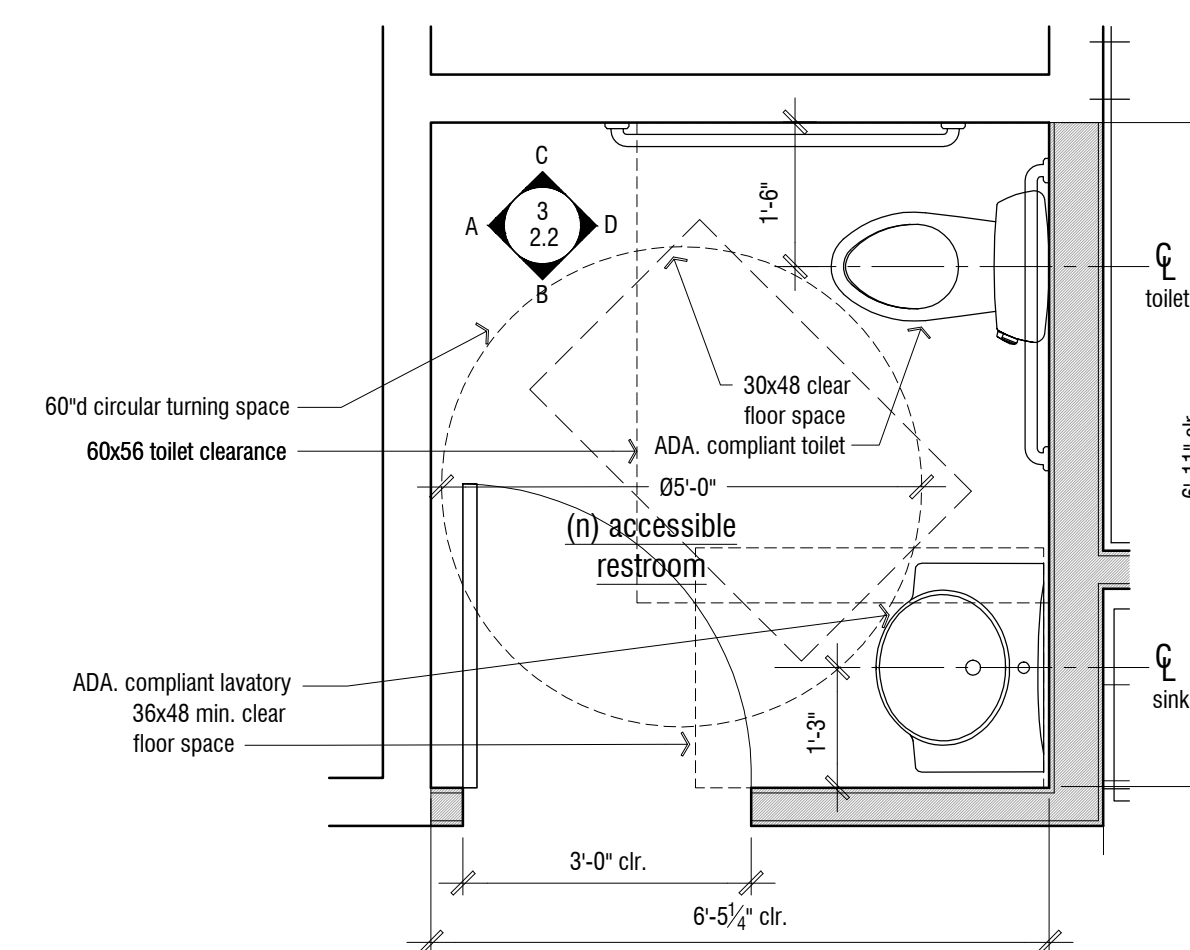
navy strength

2505 2nd Ave #102
Seattle, WA 98121

2.1
reflected ceiling plan



1 restroom elevations
 $1/2" = 1'-0"$



1 enlarged restroom plan
 $1/2" = 1'-0"$

construction drawings 17 feb 2015



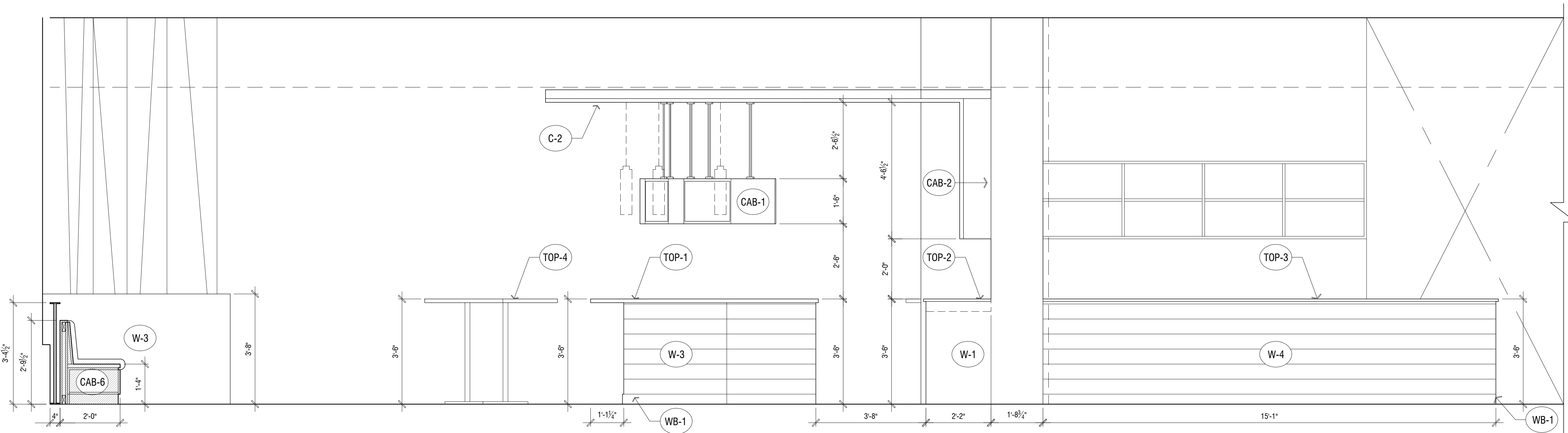
atelier drome, llp
 architecture

85 columbia st
 seattle, wa 98104
 www.atelierdrome.com

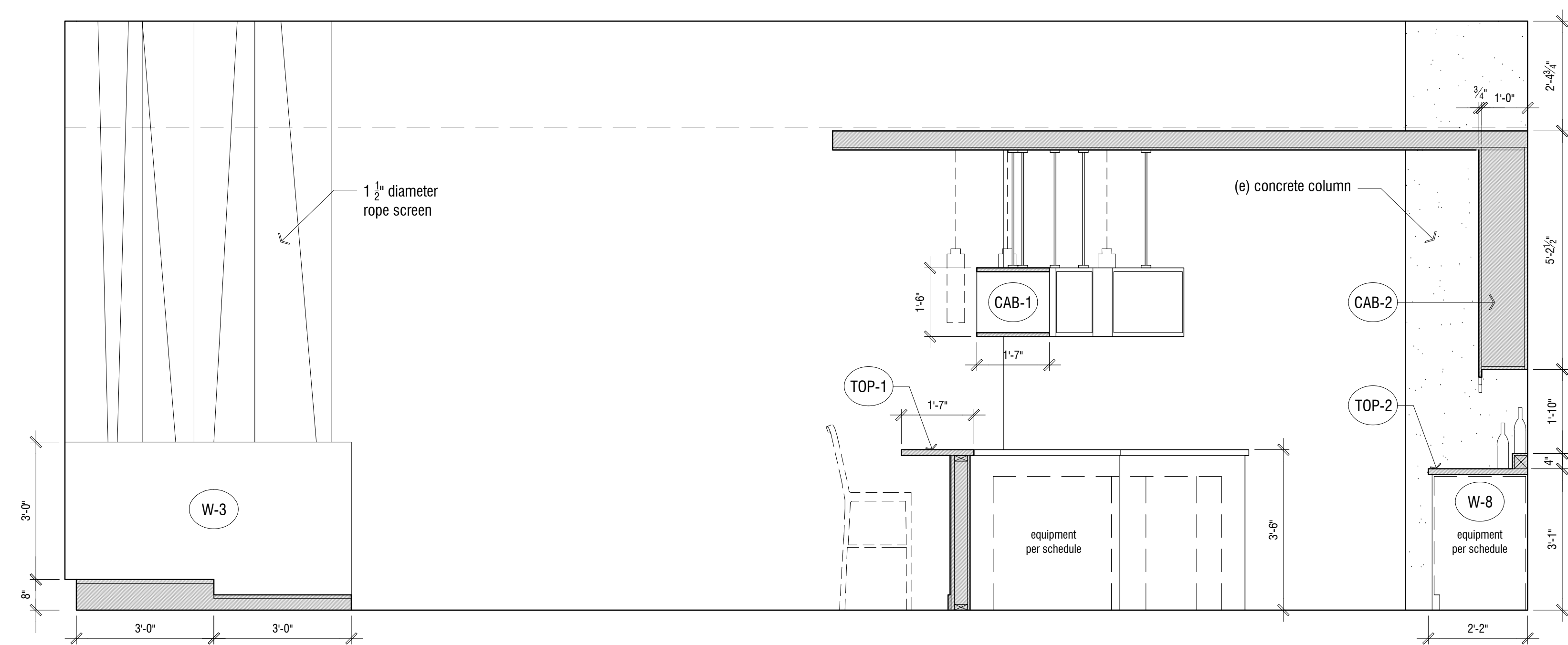
navy strength

2505 2nd Ave #102
 Seattle, WA 98121

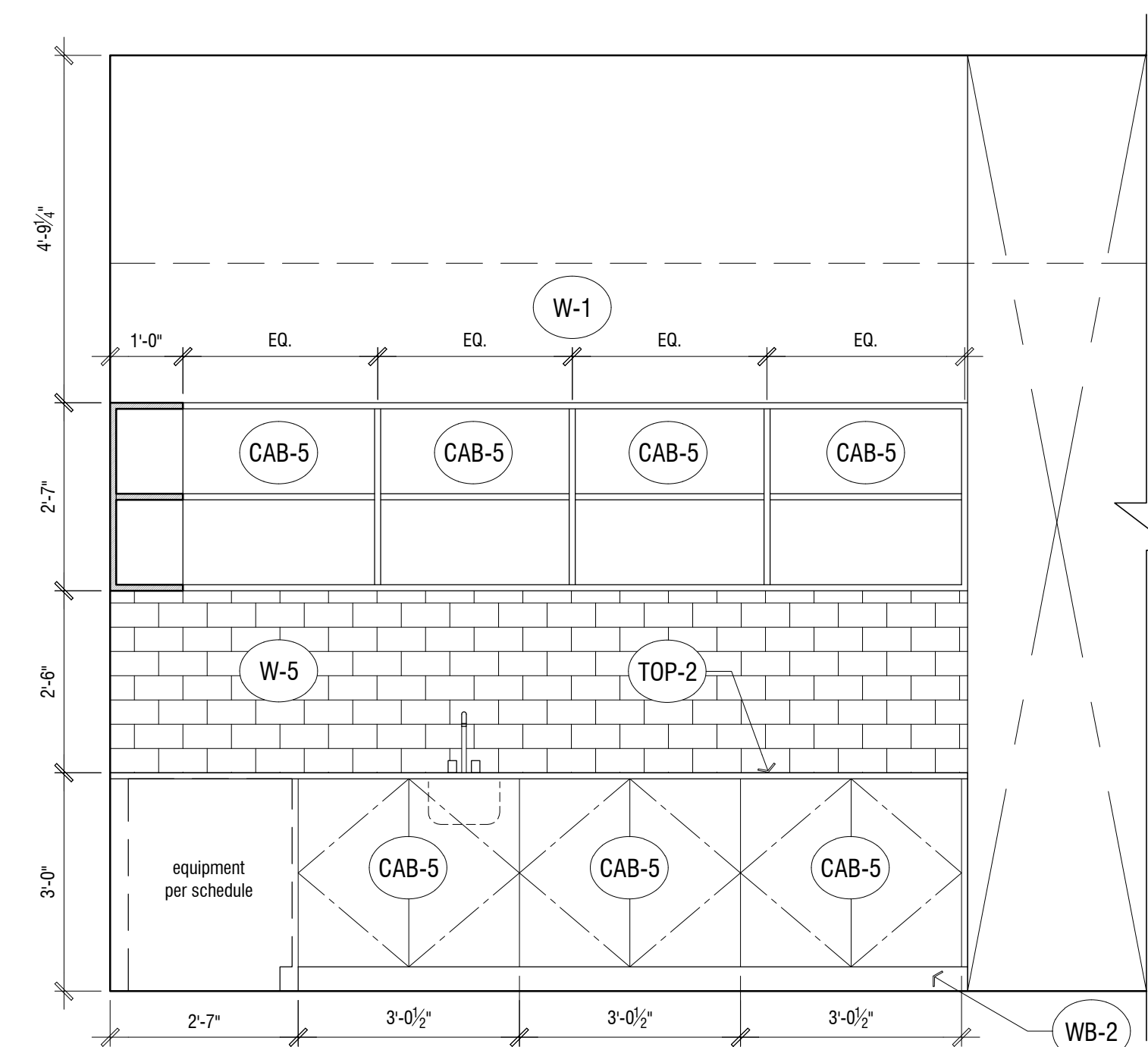
3.0
 restroom elevations



1 bar - west elevation
1/2" = 1'-0"

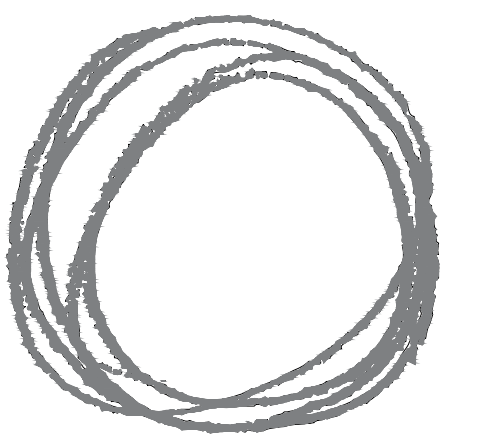


3 bar - west elevation
1/2" = 1'-0"



2 juice bar - west elevation
1/2" = 1'-0"

construction drawings 17 feb 2015



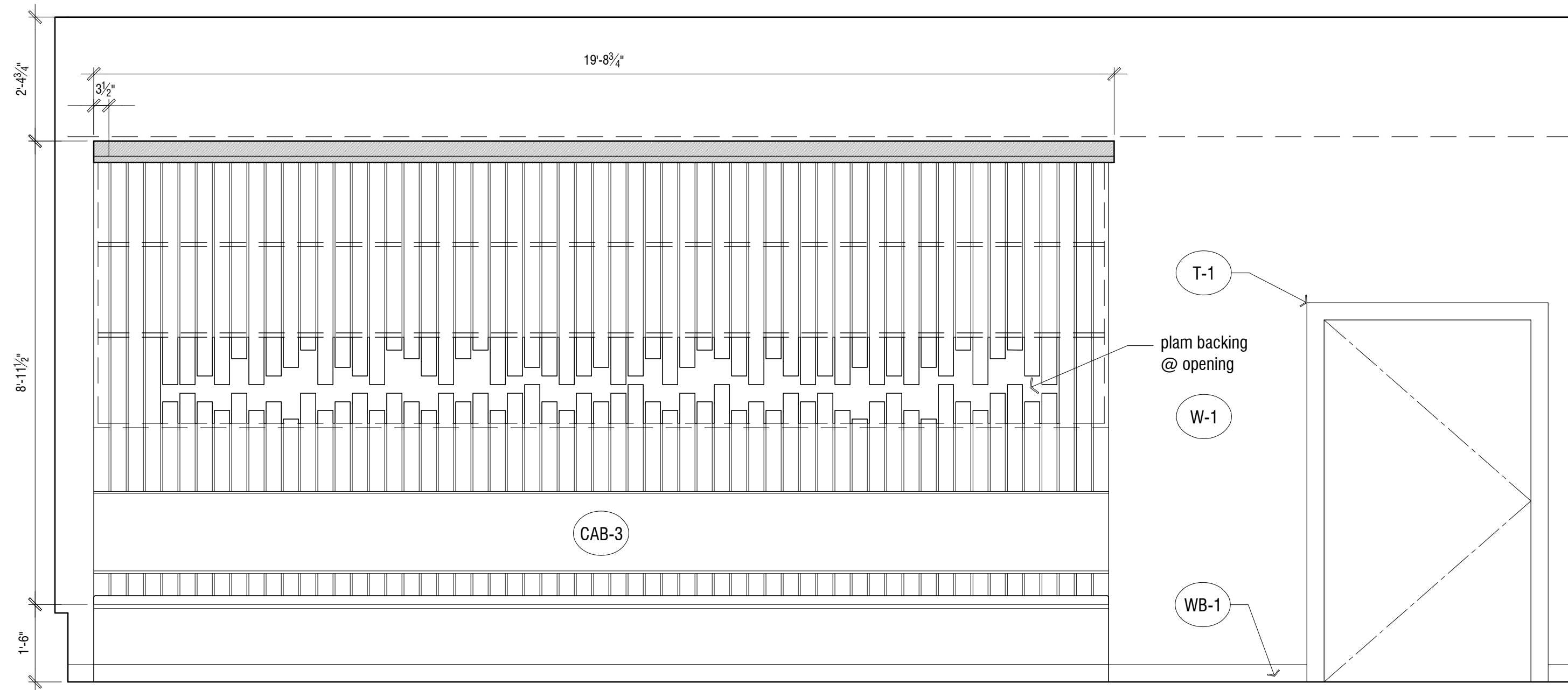
atelier drome, llp
architecture

85 columbia st
seattle, wa 98104
www.atelierdrome.com

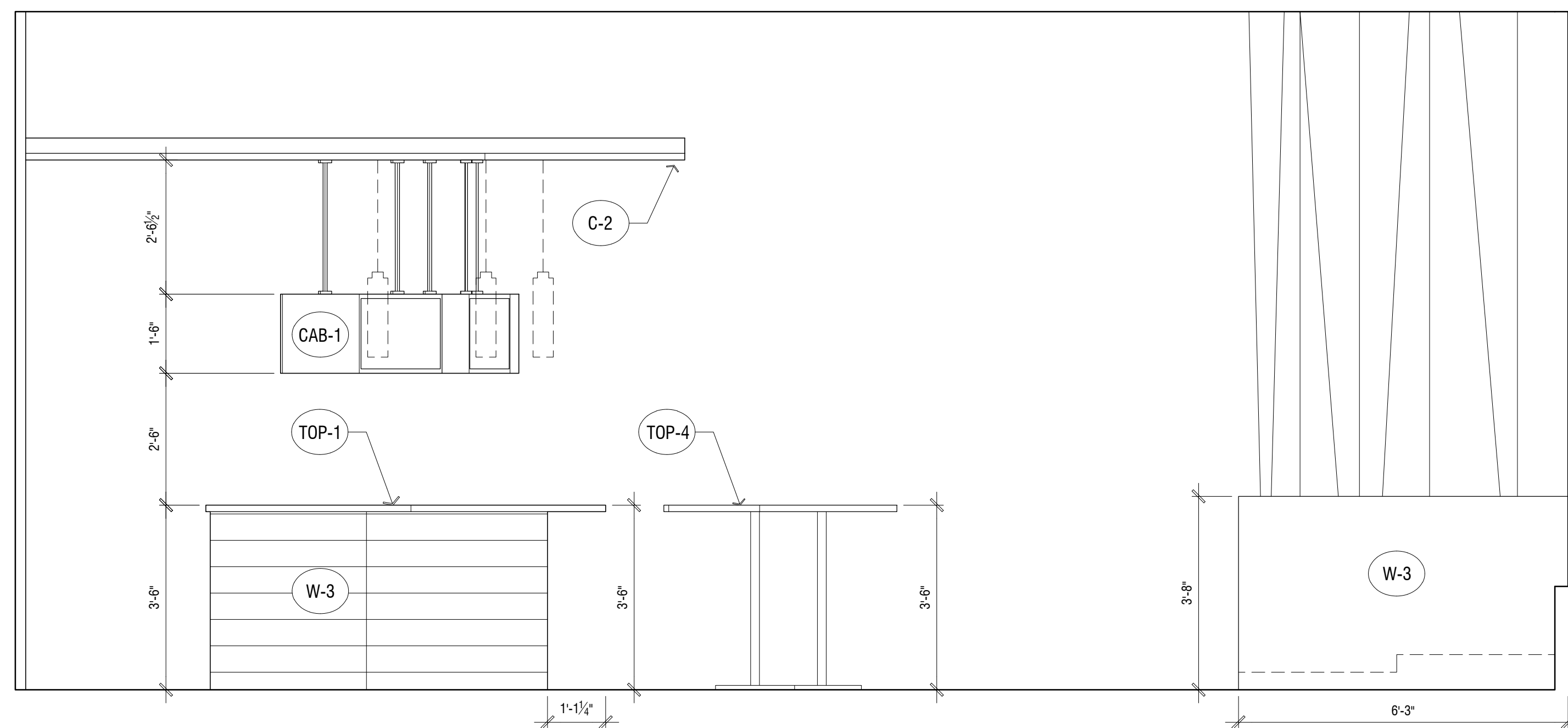
navy strength

2505 2nd Ave #102
Seattle, WA 98121

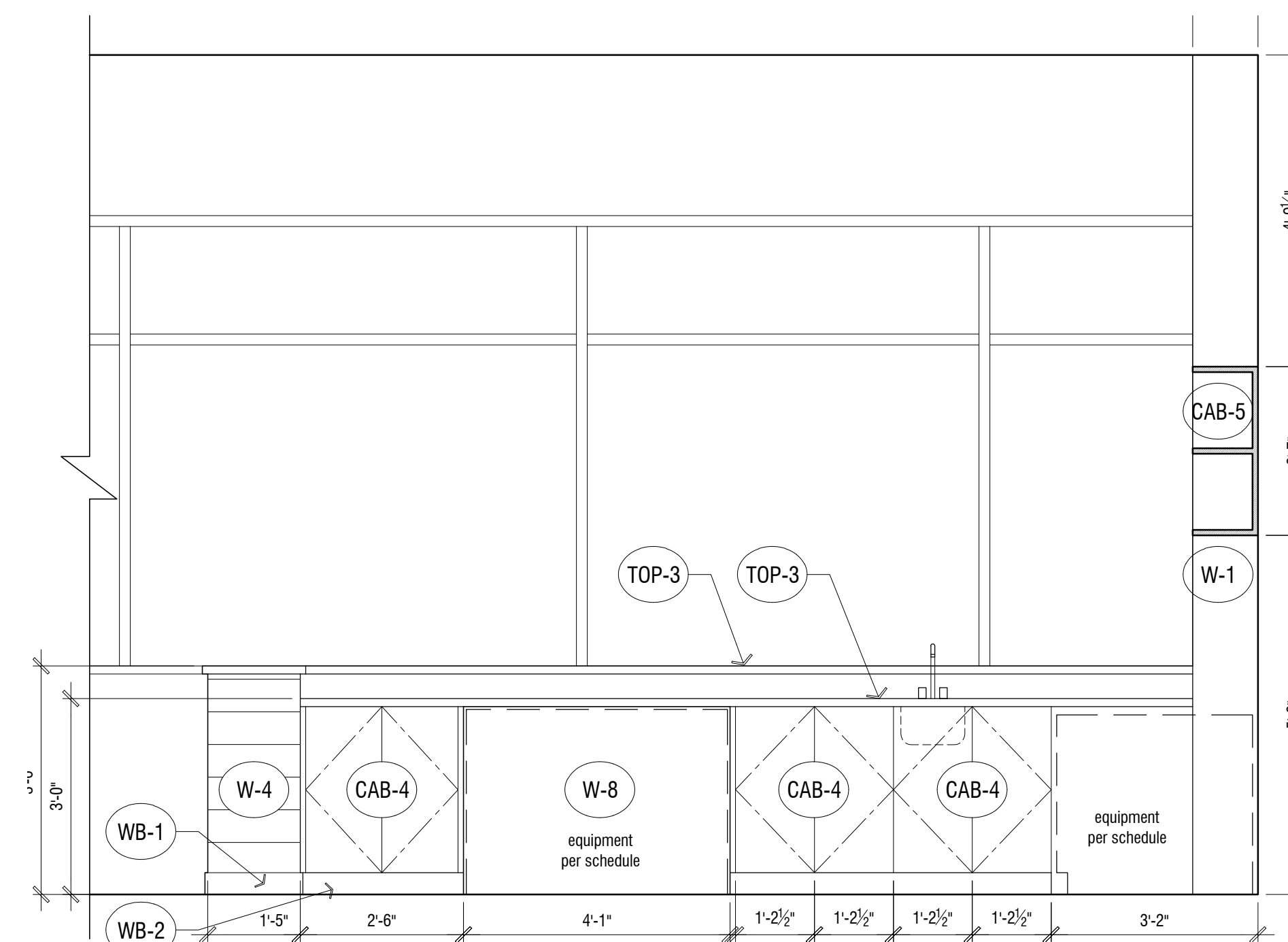
3.1
interior elevations



1 banquette - west elevation
1/2" = 1'-0"



3 bar - east elevation
1/2" = 1'-0"



2 juice bar - east elevation
1/2" = 1'-0"

construction drawings 17 feb 2015



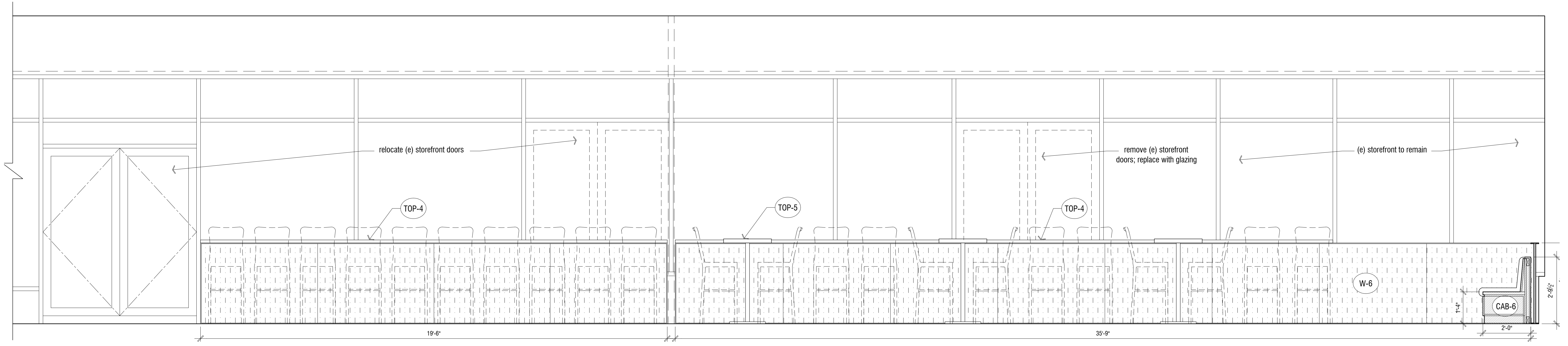
atelier drome, llp
architecture

85 columbia st
seattle, wa 98104
www.atelierdrome.com

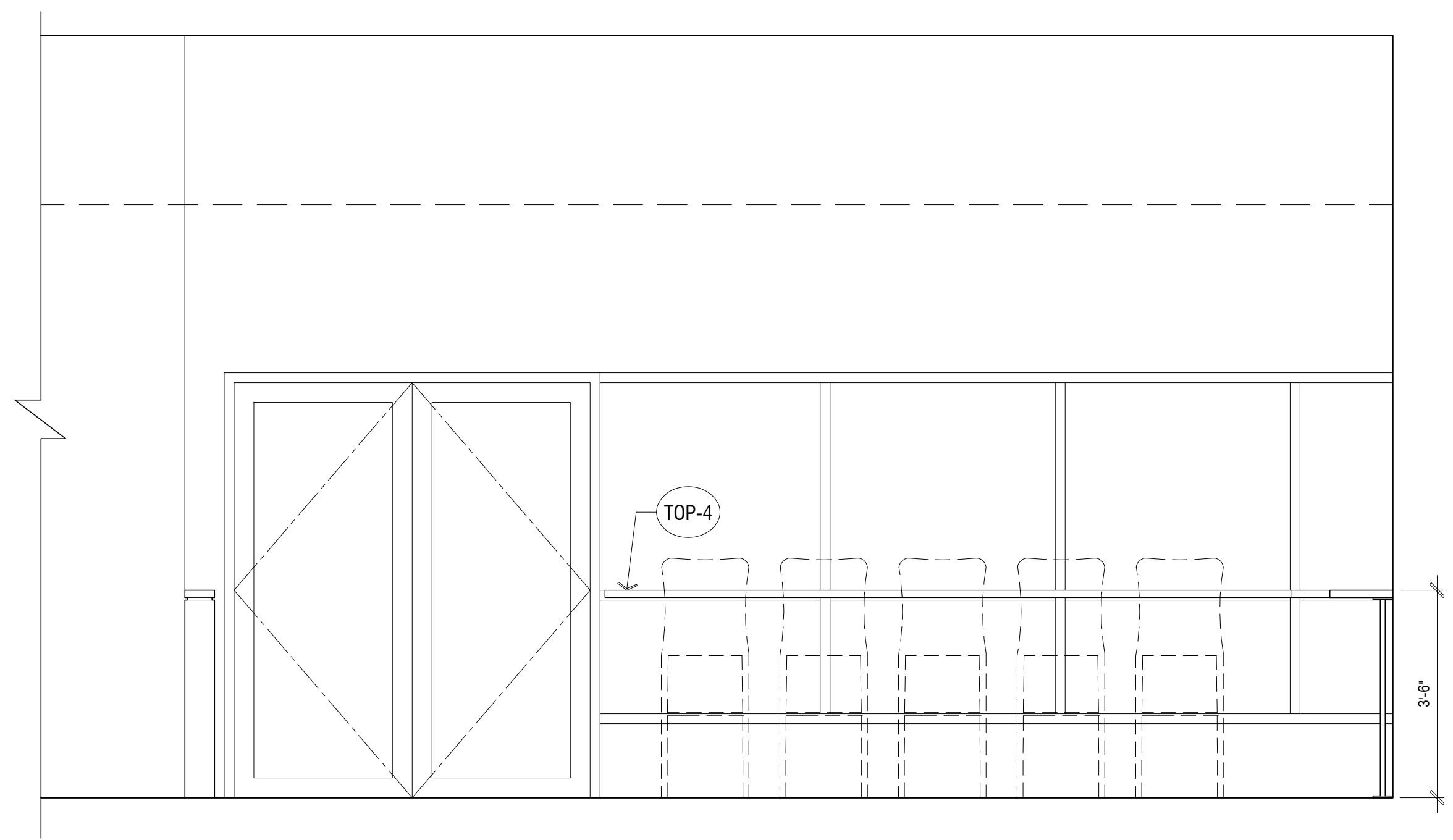
navy strength

2505 2nd Ave #102
Seattle, WA 98121

3.2
interior elevations



1 window seating - east elevation
 1/2" = 1'-0"



2 juice bar - north elevation
 1/2" = 1'-0"

construction drawings 17 feb 2015



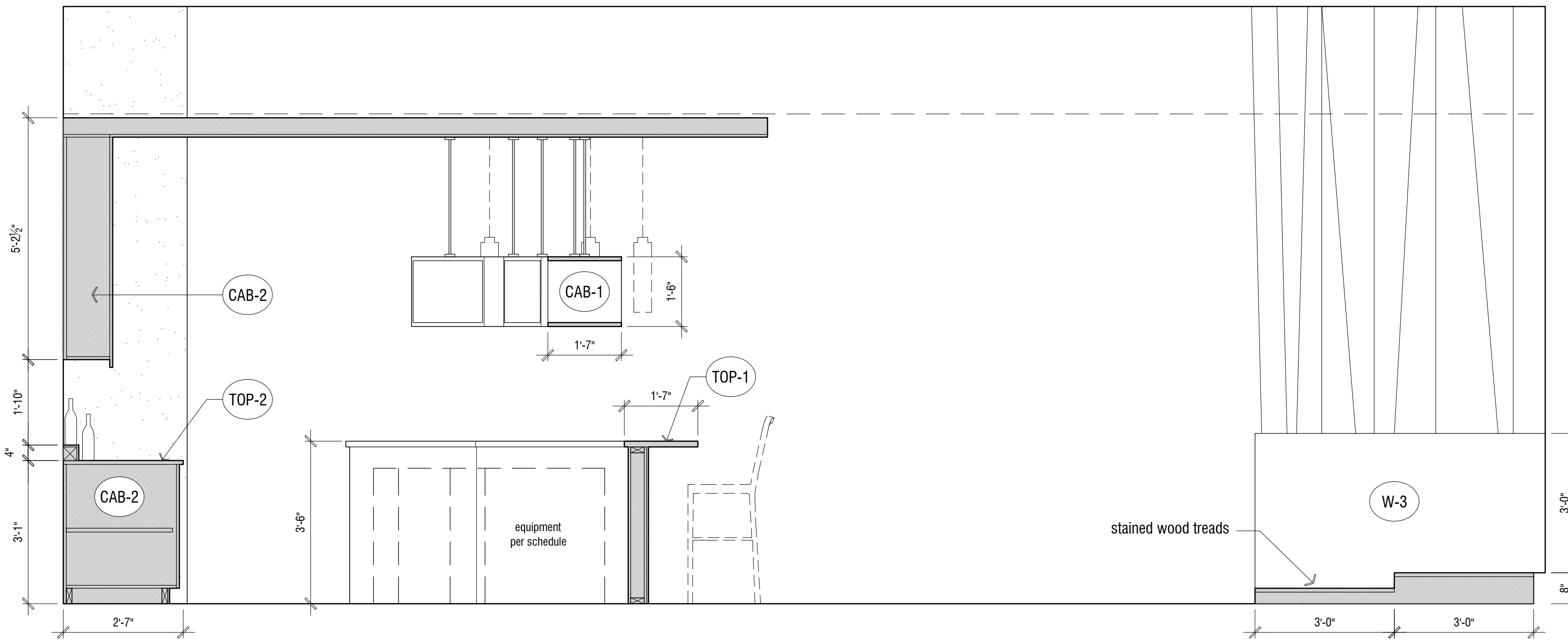
atelier drome, llp
 architecture

85 columbia st
 seattle, wa 98104
 www.atelierdrome.com

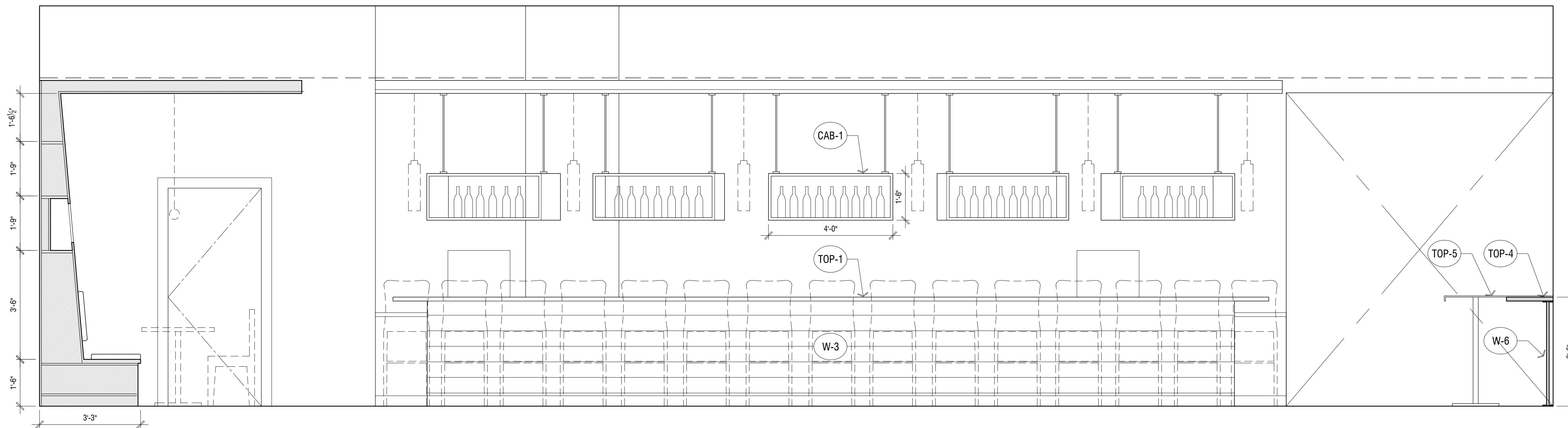
navy strength

2505 2nd Ave #102
 Seattle, WA 98121

3.3
 interior elevations



3 bar - east elevation
1/2" = 1'-0"



1 bar - north elevation
1/2" = 1'-0"

construction drawings 17 feb 2015



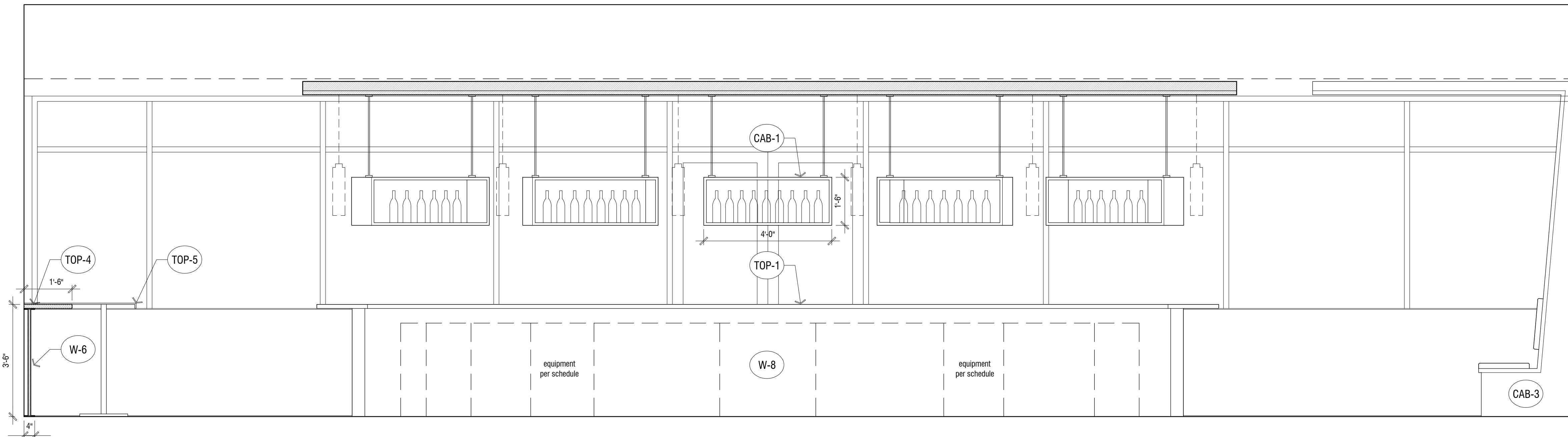
atelier drome, llp
architecture

85 columbia st
seattle, wa 98104
www.atelierdrome.com

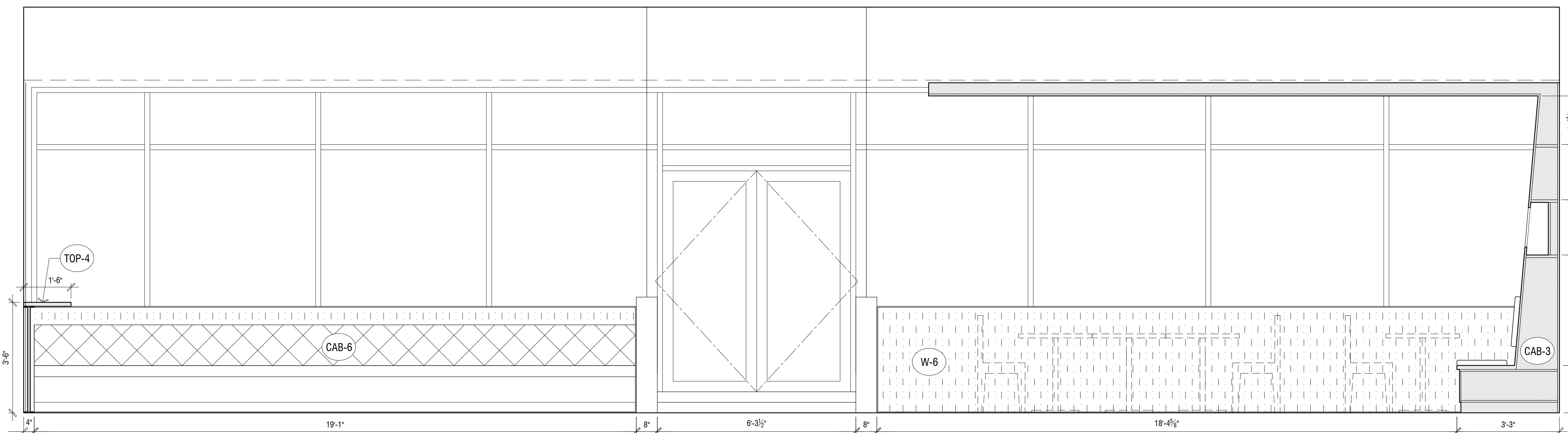
navy strength

2505 2nd Ave #102
Seattle, WA 98121

3.4
interior elevations



1 bar - south elevation
1/2" = 1'-0"



2 bar - south elevation
1/2" = 1'-0"

construction drawings 17 feb 2015



atelier drome, llp
architecture

85 columbia st
seattle, wa 98104
www.atelierdrome.com

navy strength

2505 2nd Ave #102
Seattle, WA 98121

3.6
interior elevations