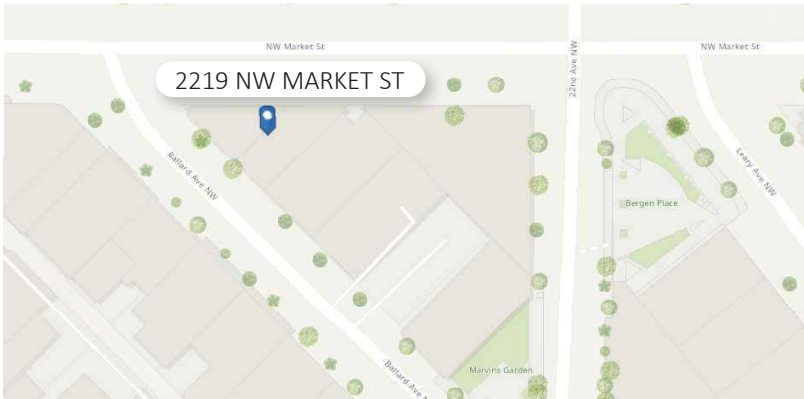
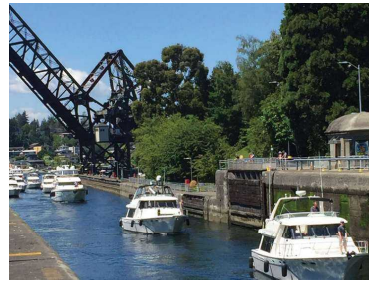


FOR LEASE

OFFICE SPACE

2219 NW MARKET STREET | SEATTLE, 98107



PROPERTY FEATURES

- Second floor office space located in the heart of Ballard
- Walking distance to numerous Ballard amenities
- Cross streets are Ballard Ave. and Market Street
- Includes utilities

Suite	Gross Lease Rate	Size (Square Feet)
24 D	\$3,047/month	1,223± SF

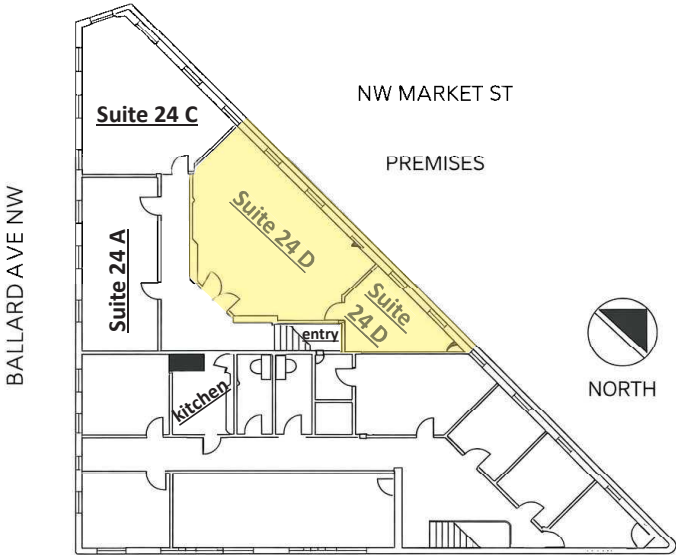


TOM GRAFF | 206.441.7900
tomgraff@ewingandclark.com

ROGER LORENZE | 206.406.1547
rlorenze@ewingandclark.com

UNIT 24D

2219 NW MARKET STREET | SEATTLE, 98107

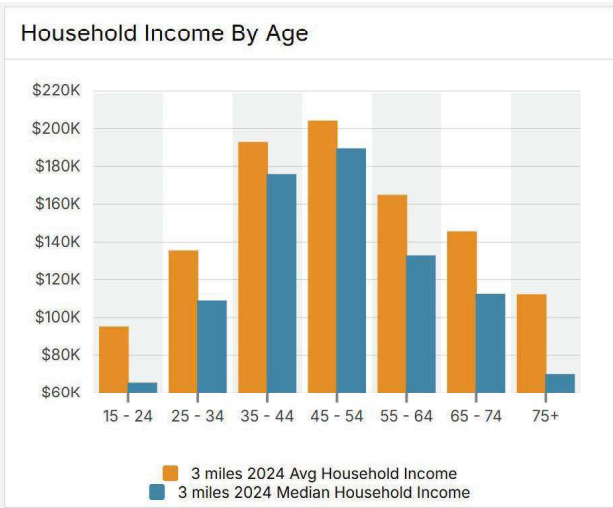
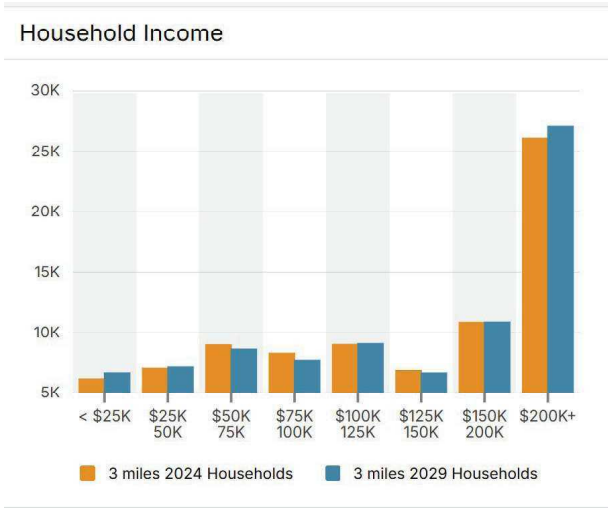
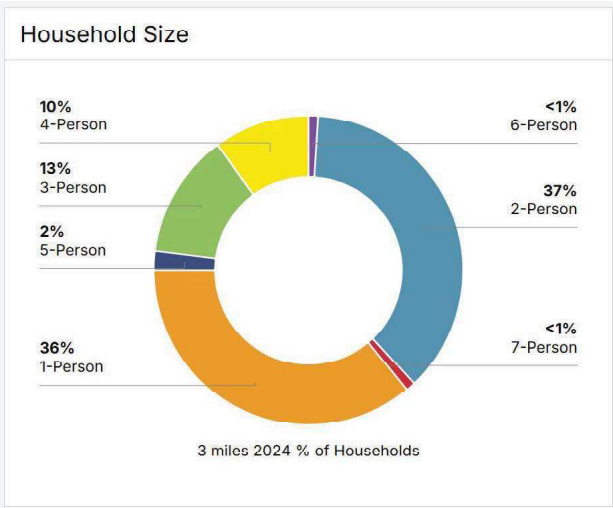
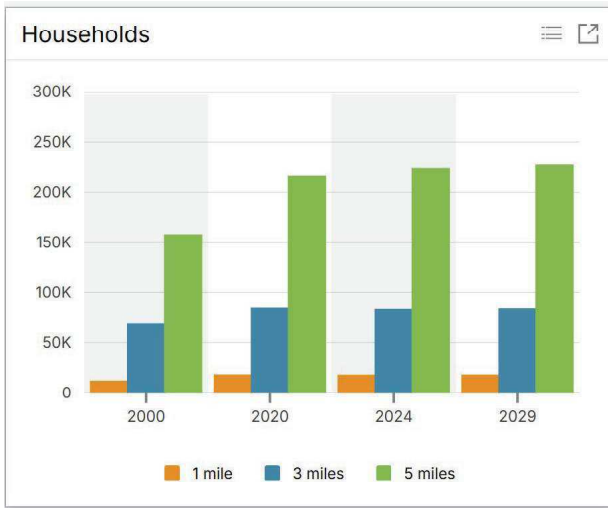


PROPERTY FEATURES

- Second floor office space located in the heart of Ballard
- Walking distance to numerous Ballard amenities
- Cross streets are Ballard Ave. and Market Street
- Includes utilities

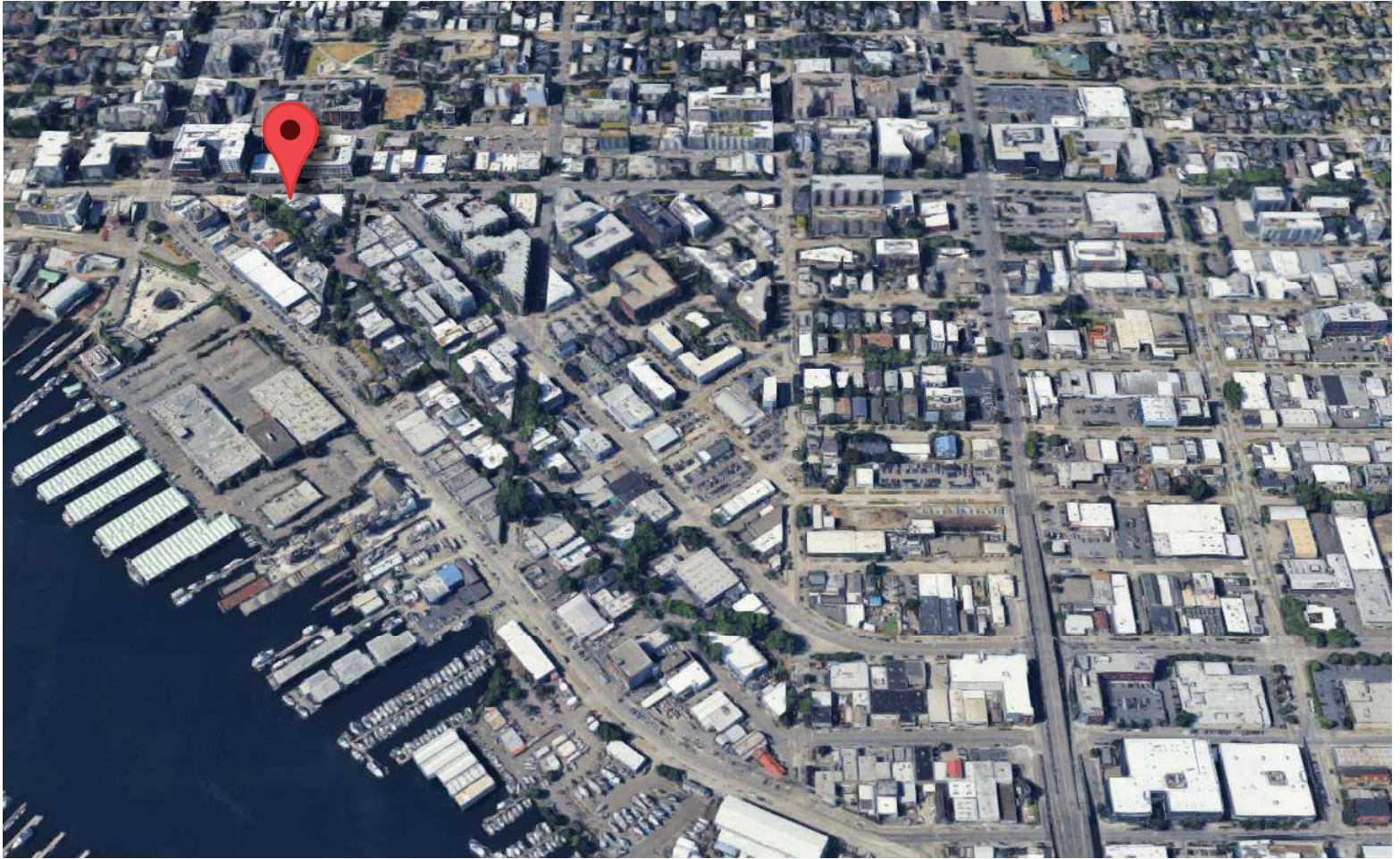
DEMOGRAPHICS

2219 NW MARKET STREET | SEATTLE, 98107



AERIAL MAP

2219 NW MARKET STREET | SEATTLE, 98107



EWING & CLARK™

**TOM
GRAFF** | 206.441.7900
tomgraff@ewingandclark.com

**ROGER
LORENZE** | 206.406.1547
rlorenze@ewingandclark.com