



FINANCIAL CENTER





FINANCIAL CENTER

1215 Fourth Avenue | Seattle, Washington 98101



BUILDING FACTS

- » Total Building Size361,760 RSF
- » Number of Floors.....28
- » Average Floor Plate15,000 RSF
- » Year Built1972
- » Parking Ratio1 / 1,800 SF
- » LEED Gold Certified
- » Fitwel Viral Response Certified

BUILDING AMENITIES

- » Small conference facility
- » Large conference facility
- » Shower facilities/locker room
- » 200 parking stalls
- » Secured bike storage
- » EV charging system
- » MT Fitness Center located on the Lower Level of Rainier Tower

ON-SITE RETAIL

- » Caffe Migliore
- » Original Deli
- » Purple Café & Wine Bar



Fitwel[®]
Viral Response
Certified

Click the play buttons for virtual tours



Damon McCartney
(206) 838-7633
mccartney@broderickgroup.com

David Greenwood
(206) 838-7635
greenwood@broderickgroup.com





FINANCIAL CENTER

1215 Fourth Avenue | Seattle, Washington 98101

WALK SCORE
99
AVG ACROSS ALL METROPOLITAN TRACT BLDGS

Lifestyle

1. Regal Cinemas
2. Westlake Park
3. Home Street Bank
4. 5th Avenue Theater
5. U.S. Post Office
6. Key Bank
7. Benaroya Hall
8. Seattle Art Museum
9. Queen Bee Nail Spa
10. American West Bank
11. UPS Store
12. Union Bank
13. Seattle Infant Development Center
14. Banner Bank
15. Bank of America
16. Seattle Public Library
17. Samir's Salon
18. Silicon Valley Bank
19. Downtown Dentistry
20. Capelli's Barbershop
21. Northwest Bank
22. YMCA - Facility / Child Care
23. Equinox Gym
24. Graham Rehabilitation and Wellness Center, Inc.
25. PCC Market

Restaurant / Bar

1. Cheesecake Factory
2. SPIN Seattle
3. Ben Paris
4. Hard Rock Café
5. Blarney Stone Pub
6. Japonessa
7. Wild Ginger
8. Elephant & Castle
9. Ruth's Chris Steak House
10. Cortina
11. Goldfinch Tavern
12. Post Alley Pizza
13. Purple Café & Wine Bar
14. Outlier
15. Lobby Court
16. Tulio
17. Charlotte Restaurant & Lounge
18. Schuckers
19. Capital Grille
20. Fogo de Chao

Coffee House

1. Starbucks
2. Fonte
3. Pegasus Coffee Bar
4. Vovito
5. Retro Coffee
6. Caffe Ladro
7. Cafe Miglore

Hotel

1. Grand Hyatt Hotel
2. Sheraton Hotel
3. Hilton Seattle
4. Hotel Vintage Seattle
5. W Seattle
6. Hotel 1000
7. Renaissance Seattle Hotel

Deli / Grab & Go

1. McDonald's
2. Pho 25
3. Chipotle
4. Gelatiamo
5. Sushi Kudasai
6. Jimmy John's
7. Subway
8. MOD Pizza
9. Melange Market
10. The Deli
11. Potbelly Sandwich Shop
12. Blue Water Taco Grill
13. Homegrown Sustainable Sandwich Shop
14. Evergreens Salad
15. Market Fresh
16. PCC Market (NEW)
17. Kudedon Noodles
18. Mendocino Farms

Retail

1. Old Navy
2. AT&T
3. Nordstrom Rack
4. ZARA
5. Target
6. Nordstrom
7. Ross Dress for Less
8. Urban Outfitters
9. Ben Bridge Jeweler
10. Watson Kennedy Fine Home
11. Bartell Drugs

Underground Tunnel

Bike Lane



Damon McCartney
(206) 838-7633
mccartney@broderickgroup.com

David Greenwood
(206) 838-7635
greenwood@broderickgroup.com





FINANCIAL CENTER

1215 Fourth Avenue | Seattle, Washington 98101

RETAIL DISTRICT

\$1.6B ANNUAL RETAIL VOLUME

MARKET DISTRICT

MET TRACT

1.6M SF OF UNIVERSITY OF WASHINGTON OWNED BUILDINGS IN THE DOWNTOWN AREA



UNDERGROUND TUNNEL



BIKE LANE

MOORE THEATRE

MAYFLOWER PARK HOTEL
WESTLAKE CENTER

WESTLAKE STATION
13,069 AVG WEEKDAY BOARDING

WASHINGTON STATE CONVENTION CENTER
450K ANNUAL ATTENDEES

THOMPSON HOTEL

THE CHARTER HOTEL

NORDSTROM

HOTEL THEODORE

HYATT AT OLIVE 8

GRAND HYATT HOTEL

ACT THEATRE

SHERATON HOTEL

PIKE PLACE MARKET
15M ANNUAL VISITORS

3RD AVE

PINE ST

2ND AVE

PIKE ST

UNION ST

BENAROYA HALL
430,000 ANNUAL VISITORS

SEATTLE ART MUSEUM
427,787 ANNUAL VISITORS

UNIVERSITY ST STATION
6,075 AVG WEEKDAY BOARDING

UNIVERSITY ST

SENECA ST

SPRING ST

MADISON ST

MARION ST

PUGET SOUND PLAZA

PCC MARKET SQUARE

RAINIER TOWER

THE COBB

FINANCIAL CENTER

FAIRMONT HOTEL

W HOTEL

HOTEL MONACO

EXECUTIVE HOTEL

SEATTLE PUBLIC LIBRARY

SKINNER BLDG

INN AT THE WAC

HILTON HOTEL

1200 FIFTH

CROWNE PLAZA

KIMPTON HOTEL

RENAISSANCE SEATTLE

SEATTLE COURTHOUSE

SEATTLE GREAT WHEEL

SEATTLE WATERFRONT BOULEVARD

SEATTLE AQUARIUM

U.S. DISTRICT COURT

OLIVE WAY

PACIFIC PLACE

INTERSTATE 5

INTERSTATE 5

INTERSTATE 5

INTERSTATE 5

INTERSTATE 5

INTERSTATE 5

INTERSTATE 5



FINANCIAL CENTER

1215 Fourth Avenue
Seattle, Washington 98101

For further information,
please contact:

Damon McCartney
(206) 838-7633

mccartney@broderickgroup.com

David Greenwood
(206) 838-7635

greenwood@broderickgroup.com



Broderick Group, Inc.
10500 NE 8th Street, Suite 900
Bellevue, WA 98004
main: (206) 838-5775

broderickgroup.com

The information contained herein has been given to us by the owner or sources which we deem reliable. We have no reason to doubt its accuracy, but we do not guarantee it. Prospective tenants should carefully verify all information contained herein.

CURRENT AVAILABLE SUITES

Floor / Suite	RSF	Comments
27/2700	14,967	Available now! Full floor availability, west facing views. Contiguous with floors 25 & 26 for a total of 44,901 RSF. Interstitial staircase connecting floors 25-27. Virtual Tour available at bit.ly/3nTc8SR
26/2600	14,967	Available now! Full floor availability, west facing views. Large breakout room located on the Southeast section of the building. Contiguous with floors 25 & 27 for a total of 44,901 RSF. Interstitial staircase connecting floors 25-27. Virtual Tour available at bit.ly/398MwOd
25/2500	14,967	Available now! Brand new build out. Full floor availability, west facing views. Contiguous with floors 26 & 27 for a total of 44,901 RSF. Interstitial staircase connecting floors 25-27. Virtual Tour available at bit.ly/3EgGkIB
24/2400	14,967	Available now! Full floor in cold shell condition with great views. Interstitial staircase connects to the 23rd floor. Market ready work completed in North East corner. Virtual Tour available at bit.ly/48mzojI
21/2100	14,946	Available now! Full floor with great views. Multiple private offices, multiple conference rooms and kitchenette. Virtual Tour available at bit.ly/3zVZL3H
20/2000	14,946	Available now! Full floor with great views. Multiple private offices, multiple conference rooms, break room and kitchenette. Virtual Tour available at bit.ly/3y4vE9P
19/1925	7,446	Available with 30 days' notice. Furniture can be made available.
18/1800	15,005	Available now! Rent ready, multiple private offices, multiple conference rooms, kitchenette. Existing furniture available. Plug and Play and already cabled. Virtual Tour available at bit.ly/3O3m7uQ
17/1730	2,748	Available now! Kitchenette, four offices and two conference rooms. West facing views. Contiguous option with Suite 1710 for a total of 6,868 RSF.
17/1710	4,120	Available 8/1/2026. Open work area, multiple private offices, and multiple conference rooms. Contiguous option with Suite 1730 for a total of 6,868 RSF.
16/1600	2,627 - 11,343	Available now! Three spec suites, can be combined for a total of 11,343 RSF.
14/1400	14,947	Available now! Open work area, multiple private offices, multiple conference rooms, kitchenette and break room. Virtual Tour available at bit.ly/3s2FjdA
13/1325	1,077	Available now! Two private offices, and open work area.
12/1215	5,826	Available now! Brand new spec suite! Multiple private offices, and a kitchenette. Virtual Tour available at bit.ly/42KjQ7h
11/1150	5,409	Available now! Open work station area, two private offices, one conference room, kitchenette and break room. Contiguous option with Suite 1125 for a total of 8,268 RSF.
11/1125	3,179	Available now! Lobby exposure, open work station area, multiple private offices, multiple conference rooms. Contiguous option with Suite 1150 for a total of 8,268 RSF. Virtual Tour available at bit.ly/4mMiOfI
10/1010	1,728	Available now! Four private offices and open work area. Contiguous option with suite 1000 for a total of 6,447 RSF. Virtual Tour available at bit.ly/2LXIbne
10/1000	4,719	Available now! Multiple private offices, multiple conference rooms, storage area, and a kitchenette.
9/935	2,220	Available now! Lobby exposure, open work station area, multiple private offices, multiple conference rooms.
8/800	14,870	Available now! Full floor, kitchenette/break room, multiple private offices, conference rooms, two private restrooms and a large open work area. Contiguous with floor 7 for a total of 29,744 RSF. Virtual Tour available at bit.ly/325WRW6
7/700	14,874	Available now! Full floor, kitchenette/break room, multiple private offices, large conference rooms, private restrooms and open work areas. Contiguous with floor 8 for a total of 29,744 RSF. Virtual Tour available at bit.ly/2lIDFla
3/305	2,008	Available now! Multiple private offices, open work area, conference room, kitchenette/break room and storage.
1/110	2,759	Available now! Ground floor space and great signage opportunity.



FINANCIAL CENTER

1215 Fourth Avenue
Seattle, Washington 98101

For further information,
please contact:

Damon McCartney

(206) 838-7633

mccartney@broderickgroup.com

David Greenwood

(206) 838-7635

greenwood@broderickgroup.com



Broderick Group, Inc.
10500 NE 8th Street, Suite 900
Bellevue, WA 98004
main: (206) 838-5775

broderickgroup.com

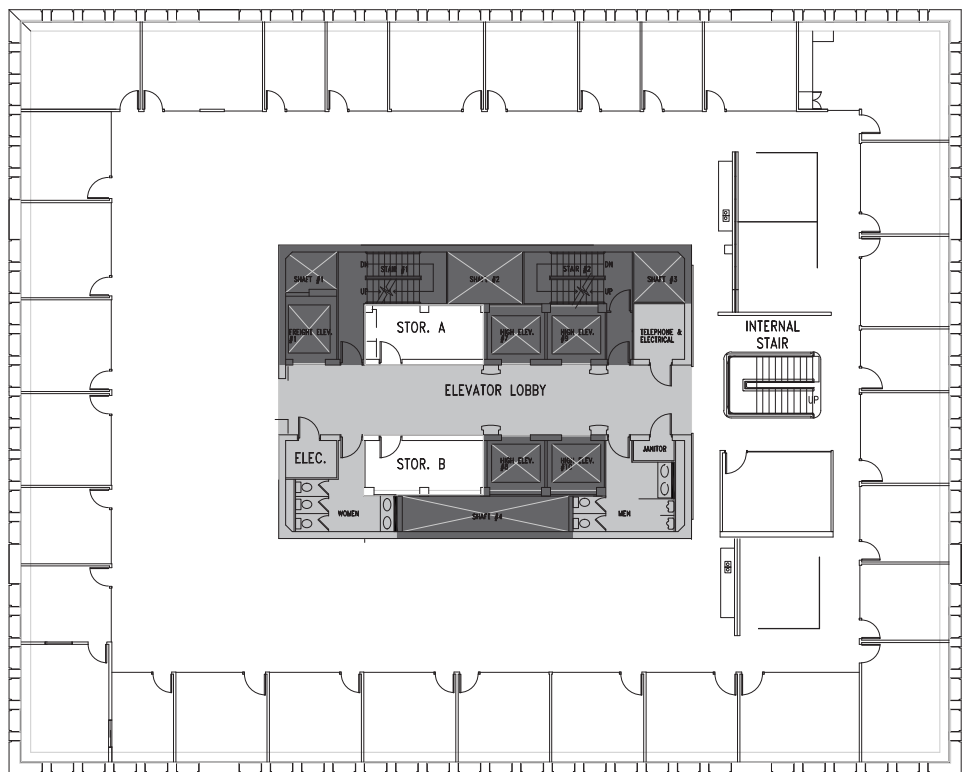
The information contained herein has been given to us by the owner or sources which we deem reliable. We have no reason to doubt its accuracy, but we do not guarantee it. Prospective tenants should carefully verify all information contained herein.

For virtual tour, visit:

bit.ly/3nTc8SR

SUITE 2700

14,967 RSF



SPACE FEATURES

- » Available now!
- » West facing views
- » Contiguous with floors 25 & 26 (44,901 RSF combined)
- » Interstitial staircase connecting floors 25 - 27



METROTRACT
SEATTLE



FINANCIAL CENTER

1215 Fourth Avenue
Seattle, Washington 98101

For further information,
please contact:

Damon McCartney
(206) 838-7633

mccartney@broderickgroup.com

David Greenwood
(206) 838-7635

greenwood@broderickgroup.com



Broderick Group, Inc.
10500 NE 8th Street, Suite 900
Bellevue, WA 98004
main: (206) 838-5775

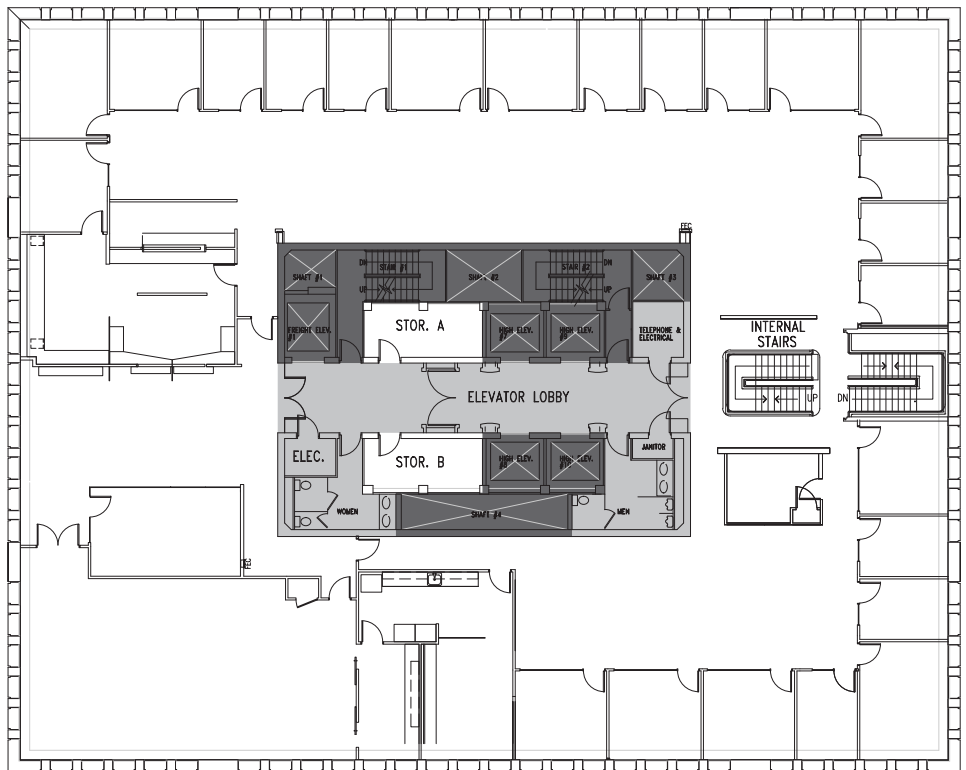
broderickgroup.com

The information contained herein has been given to us by the owner or sources which we deem reliable. We have no reason to doubt its accuracy, but we do not guarantee it. Prospective tenants should carefully verify all information contained herein.

For virtual tour, visit:
bit.ly/398MwOd

SUITE 2600

14,967 RSF



SPACE FEATURES

- » Available now!
- » West facing views
- » Large breakout room located on the Southeast section of the building
- » Contiguous with floors 25 & 27 (44,901 RSF combined)
- » Interstitial staircase connecting floors 25 - 27



METROTRACT
SEATTLE



FINANCIAL CENTER

1215 Fourth Avenue
Seattle, Washington 98101

For further information,
please contact:

Damon McCartney
(206) 838-7633

mccartney@broderickgroup.com

David Greenwood
(206) 838-7635

greenwood@broderickgroup.com



Broderick Group, Inc.
10500 NE 8th Street, Suite 900
Bellevue, WA 98004
main: (206) 838-5775

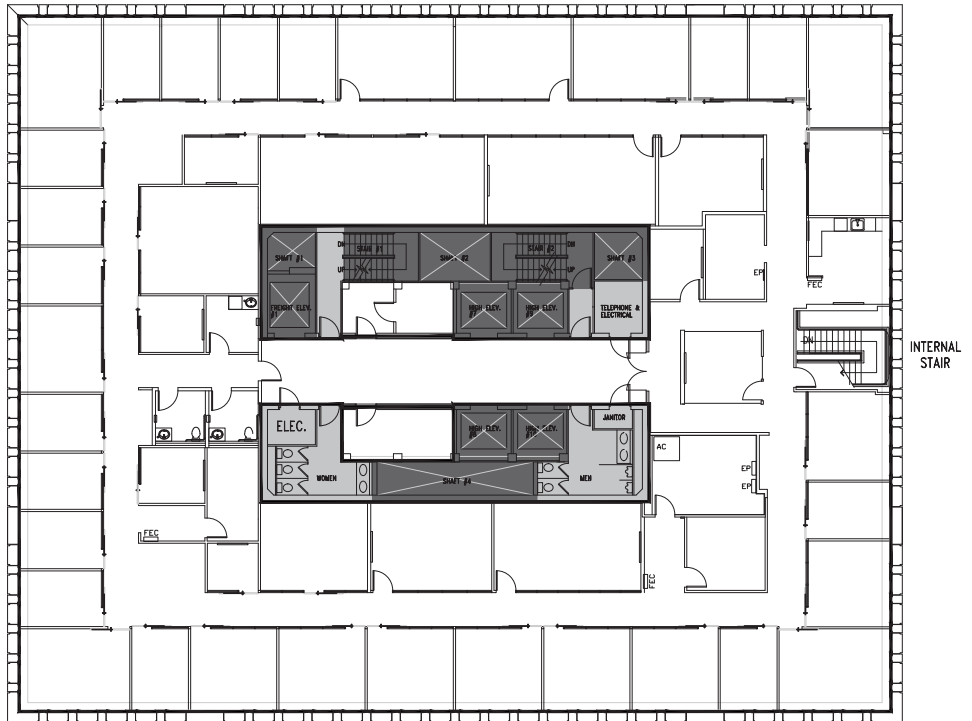
broderickgroup.com

The information contained herein has been given to us by the owner or sources which we deem reliable. We have no reason to doubt its accuracy, but we do not guarantee it. Prospective tenants should carefully verify all information contained herein.

For virtual tour, visit:
bit.ly/3EgGkIB

SUITE 2500

14,967 RSF



SPACE FEATURES

- » Available now!
- » Brand new build out
- » West facing views
- » Contiguous with floors 26 & 27 (44,901 RSF combined)
- » Interstitial staircase connecting floors 25 - 27



METROTRACT
SEATTLE



FINANCIAL CENTER

1215 Fourth Avenue
Seattle, Washington 98101

For further information,
please contact:

Damon McCartney
(206) 838-7633

mccartney@broderickgroup.com

David Greenwood
(206) 838-7635

greenwood@broderickgroup.com



Broderick Group, Inc.
10500 NE 8th Street, Suite 900
Bellevue, WA 98004
main: (206) 838-5775

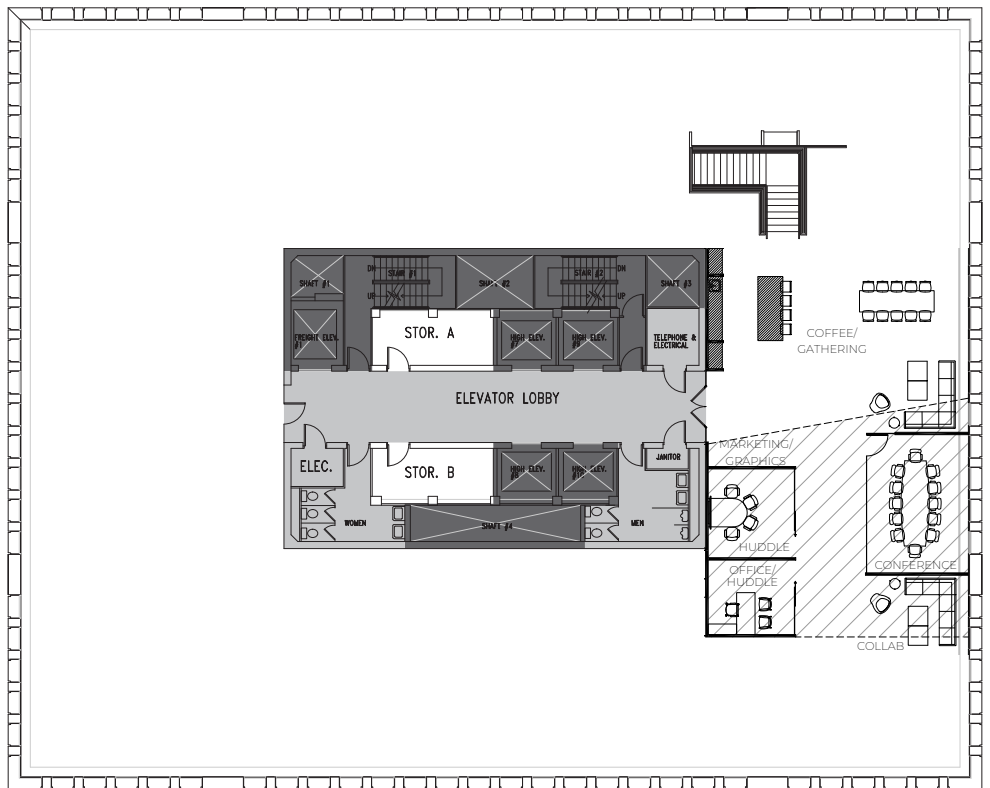
broderickgroup.com

The information contained herein has been given to us by the owner or sources which we deem reliable. We have no reason to doubt its accuracy, but we do not guarantee it. Prospective tenants should carefully verify all information contained herein.

For virtual tour, visit:
bit.ly/48mz0j1

SUITE 2400

14,967 RSF



SPACE FEATURES

- » Available now!
- » Market ready work completed in North East corner
- » Full floor availability
- » West facing views
- » Interstitial staircase connecting to the 23rd floor



METROTRACT
SEATTLE



FINANCIAL CENTER

1215 Fourth Avenue
Seattle, Washington 98101

For further information,
please contact:

Damon McCartney
(206) 838-7633

mccartney@broderickgroup.com

David Greenwood
(206) 838-7635

greenwood@broderickgroup.com



Broderick Group, Inc.
10500 NE 8th Street, Suite 900
Bellevue, WA 98004
main: (206) 838-5775

broderickgroup.com

The information contained herein has been given to us by the owner or sources which we deem reliable. We have no reason to doubt its accuracy, but we do not guarantee it. Prospective tenants should carefully verify all information contained herein.

FULL FLOOR SUITE 2400 CONCEPT - OPEN OFFICE PLAN 14,967 RSF

N



*Proposed Plan

SPACE FEATURES

- » Total Occupants: 108
- » 140 RSF/person
- » 7 offices
- » 100 workstations
- » 1 reception area
- » 1 break room
- » 2 conference rooms
- » 2 phone rooms
- » 4 huddle rooms
- » 3 touchdown areas
- » 2 copy/work areas
- » 1 server/storage room



METROTRACT
SEATTLE



FINANCIAL CENTER

1215 Fourth Avenue
Seattle, Washington 98101

For further information,
please contact:

Damon McCartney

(206) 838-7633

mccartney@broderickgroup.com

David Greenwood

(206) 838-7635

greenwood@broderickgroup.com



Broderick Group, Inc.
10500 NE 8th Street, Suite 900
Bellevue, WA 98004
main: (206) 838-5775

broderickgroup.com

The information contained herein has been given to us by the owner or sources which we deem reliable. We have no reason to doubt its accuracy, but we do not guarantee it. Prospective tenants should carefully verify all information contained herein.

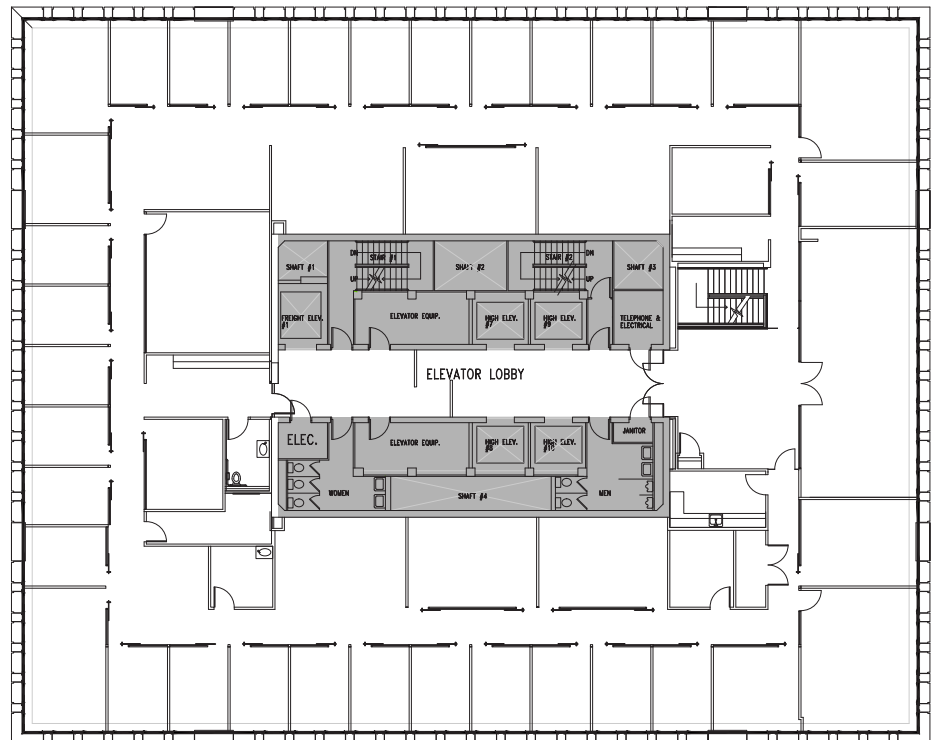
For virtual tour, visit:

bit.ly/3zVZL3H

SUITE 2100

14,946 RSF

N



SPACE FEATURES

- » Available Now!
- » Multiple private offices
- » Multiple conference rooms
- » Kitchenette
- » Furniture can be made available



METROTRACT
SEATTLE



FINANCIAL CENTER

1215 Fourth Avenue
Seattle, Washington 98101

For further information,
please contact:

Damon McCartney

(206) 838-7633

mccartney@broderickgroup.com

David Greenwood

(206) 838-7635

greenwood@broderickgroup.com



Broderick Group, Inc.
10500 NE 8th Street, Suite 900
Bellevue, WA 98004
main: (206) 838-5775

broderickgroup.com

The information contained herein has been given to us by the owner or sources which we deem reliable. We have no reason to doubt its accuracy, but we do not guarantee it. Prospective tenants should carefully verify all information contained herein.

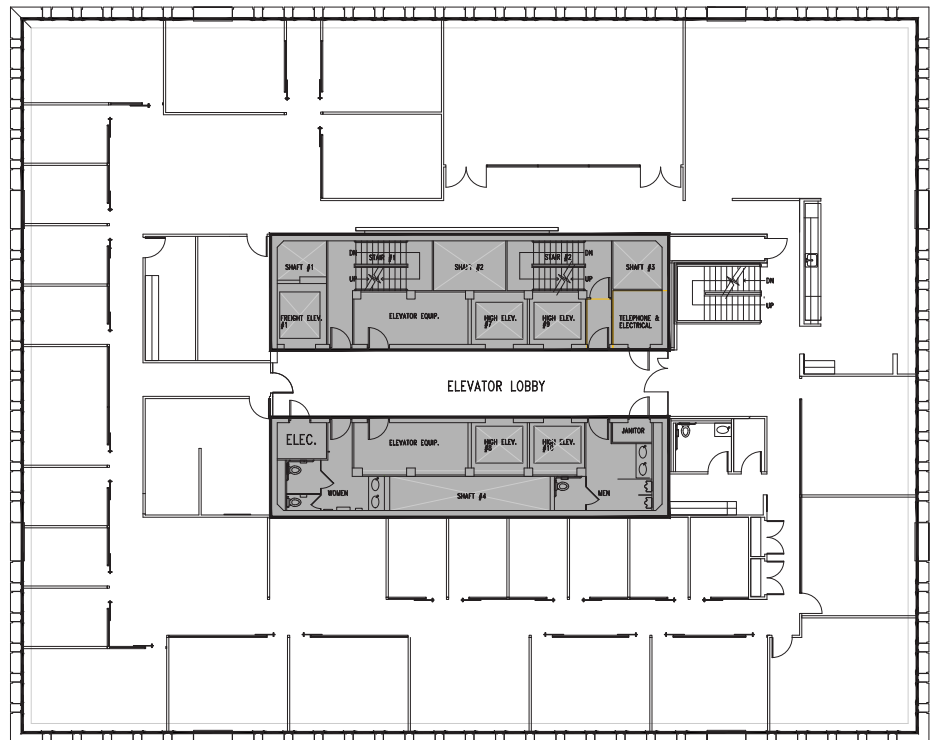
For virtual tour, visit:

bit.ly/3y4vE9P

SUITE 2000

14,946 RSF

N



SPACE FEATURES

- » Available Now!
- » Multiple private offices
- » Multiple conference rooms
- » Kitchenette / Break room
- » Open work area



METROTRACT
SEATTLE



FINANCIAL CENTER

1215 Fourth Avenue
Seattle, Washington 98101

For further information,
please contact:

Damon McCartney

(206) 838-7633

mccartney@broderickgroup.com

David Greenwood

(206) 838-7635

greenwood@broderickgroup.com

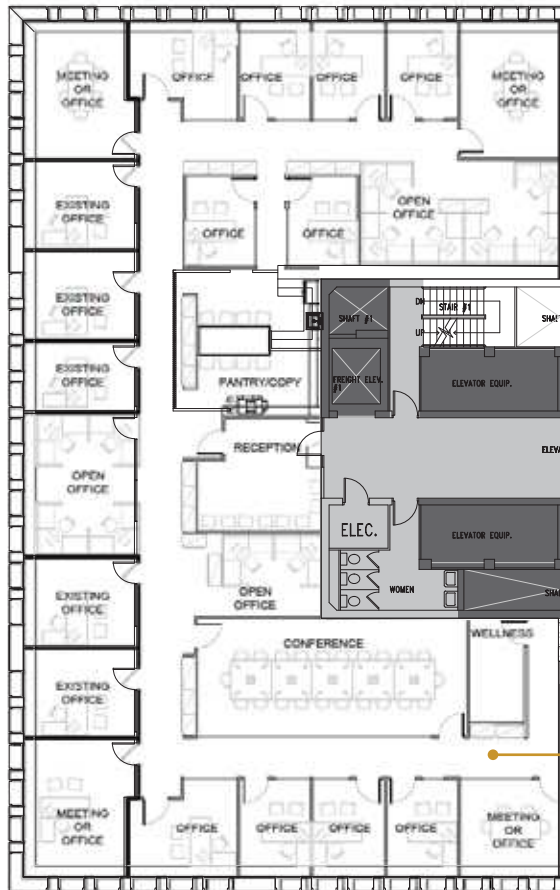


Broderick Group, Inc.
10500 NE 8th Street, Suite 900
Bellevue, WA 98004
main: (206) 838-5775

broderickgroup.com

The information contained herein has been given to us by the owner or sources which we deem reliable. We have no reason to doubt its accuracy, but we do not guarantee it. Prospective tenants should carefully verify all information contained herein.

SUITE 1925 7,446 RSF



Suite 1925

SPACE FEATURES

- » Available with 30 days' notice
- » Furniture can be made available



METROTRACT
SEATTLE



FINANCIAL CENTER

1215 Fourth Avenue
Seattle, Washington 98101

For further information,
please contact:

Damon McCartney

(206) 838-7633

mccartney@broderickgroup.com

David Greenwood

(206) 838-7635

greenwood@broderickgroup.com



Broderick Group, Inc.
10500 NE 8th Street, Suite 900
Bellevue, WA 98004
main: (206) 838-5775

broderickgroup.com

The information contained herein has been given to us by the owner or sources which we deem reliable. We have no reason to doubt its accuracy, but we do not guarantee it. Prospective tenants should carefully verify all information contained herein.

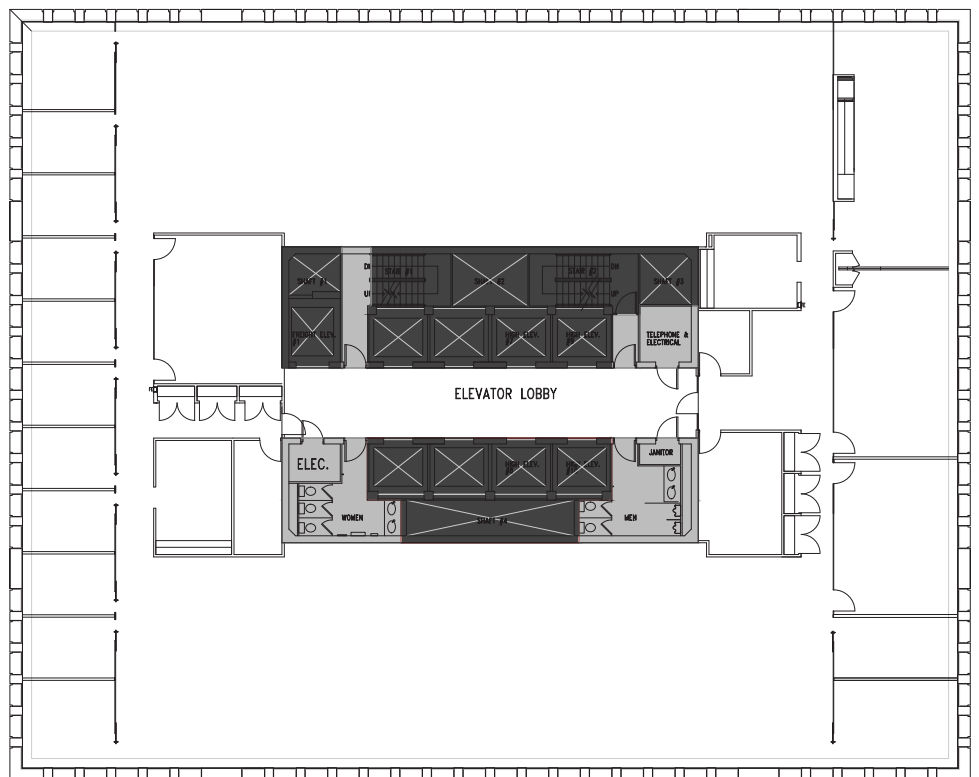
For virtual tour, visit:

bit.ly/303m7uQ

SUITE 1800

15,005 RSF

N



SPACE FEATURES

- » Available now!
- » Rent ready
- » Multiple private offices
- » Multiple conference rooms
- » Kitchenette
- » Existing furniture available
- » Plug and Play and already cabled



METROTRACT
SEATTLE



FINANCIAL CENTER

1215 Fourth Avenue
Seattle, Washington 98101

For further information,
please contact:

Damon McCartney
(206) 838-7633

mccartney@broderickgroup.com

David Greenwood
(206) 838-7635

greenwood@broderickgroup.com



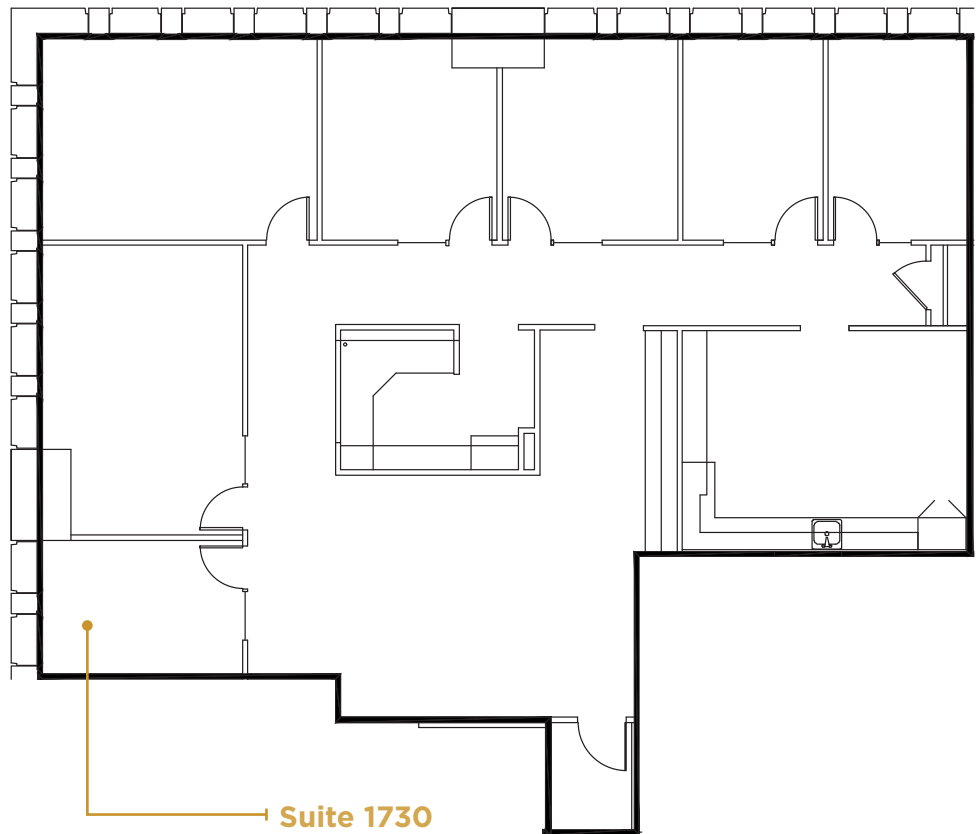
Broderick Group, Inc.
10500 NE 8th Street, Suite 900
Bellevue, WA 98004
main: (206) 838-5775

broderickgroup.com

The information contained herein has been given to us by the owner or sources which we deem reliable. We have no reason to doubt its accuracy, but we do not guarantee it. Prospective tenants should carefully verify all information contained herein.

SUITE 1730 2,748 RSF

N



SPACE FEATURES

- » Available now!
- » Kitchenette
- » Four offices
- » Two conference rooms
- » West facing views
- » Contiguous option with Suite 1710 for a total of 6,868 RSF



METROTRACT
SEATTLE



FINANCIAL CENTER

1215 Fourth Avenue
Seattle, Washington 98101

For further information,
please contact:

Damon McCartney

(206) 838-7633

mccartney@broderickgroup.com

David Greenwood

(206) 838-7635

greenwood@broderickgroup.com

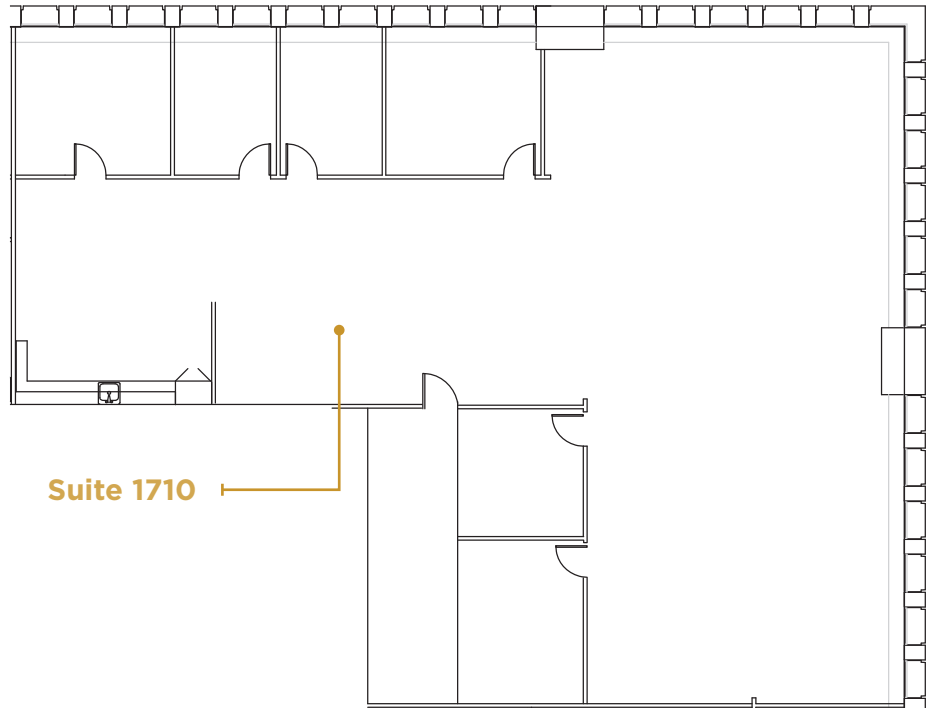


Broderick Group, Inc.
10500 NE 8th Street, Suite 900
Bellevue, WA 98004
main: (206) 838-5775

broderickgroup.com

The information contained herein has been given to us by the owner or sources which we deem reliable. We have no reason to doubt its accuracy, but we do not guarantee it. Prospective tenants should carefully verify all information contained herein.

SUITE 1710 4,120 RSF



SPACE FEATURES

- » Available 8/1/2026
- » Open work area
- » Multiple private offices
- » Multiple conference rooms
- » Contiguous option with Suite 1730 for a total of 6,868 RSF



METROTRACT
SEATTLE



FINANCIAL CENTER

1215 Fourth Avenue
Seattle, Washington 98101

For further information,
please contact:

Damon McCartney
(206) 838-7633

mccartney@broderickgroup.com

David Greenwood
(206) 838-7635

greenwood@broderickgroup.com



Broderick Group, Inc.
10500 NE 8th Street, Suite 900
Bellevue, WA 98004
main: (206) 838-5775

broderickgroup.com

The information contained herein has been given to us by the owner or sources which we deem reliable. We have no reason to doubt its accuracy, but we do not guarantee it. Prospective tenants should carefully verify all information contained herein.

SUITE 1600

11,343 RSF

SUITE 1620
2,627 RSF

For virtual tour, visit:
bit.ly/46w0CFO



SUITE 1610
4,585 RSF

For virtual tour, visit:
bit.ly/4lWa2zj



**Furniture is not available*

SUITE 1600
4,131 RSF

For virtual tour, visit:
bit.ly/4p7D5m1

SPACE FEATURES

- » Available now!
- » Three spec suites



METROTRACT
SEATTLE



FINANCIAL CENTER

1215 Fourth Avenue
Seattle, Washington 98101

For further information,
please contact:

Damon McCartney

(206) 838-7633

mccartney@broderickgroup.com

David Greenwood

(206) 838-7635

greenwood@broderickgroup.com



Broderick Group, Inc.
10500 NE 8th Street, Suite 900
Bellevue, WA 98004
main: (206) 838-5775

broderickgroup.com

The information contained herein has been given to us by the owner or sources which we deem reliable. We have no reason to doubt its accuracy, but we do not guarantee it. Prospective tenants should carefully verify all information contained herein.

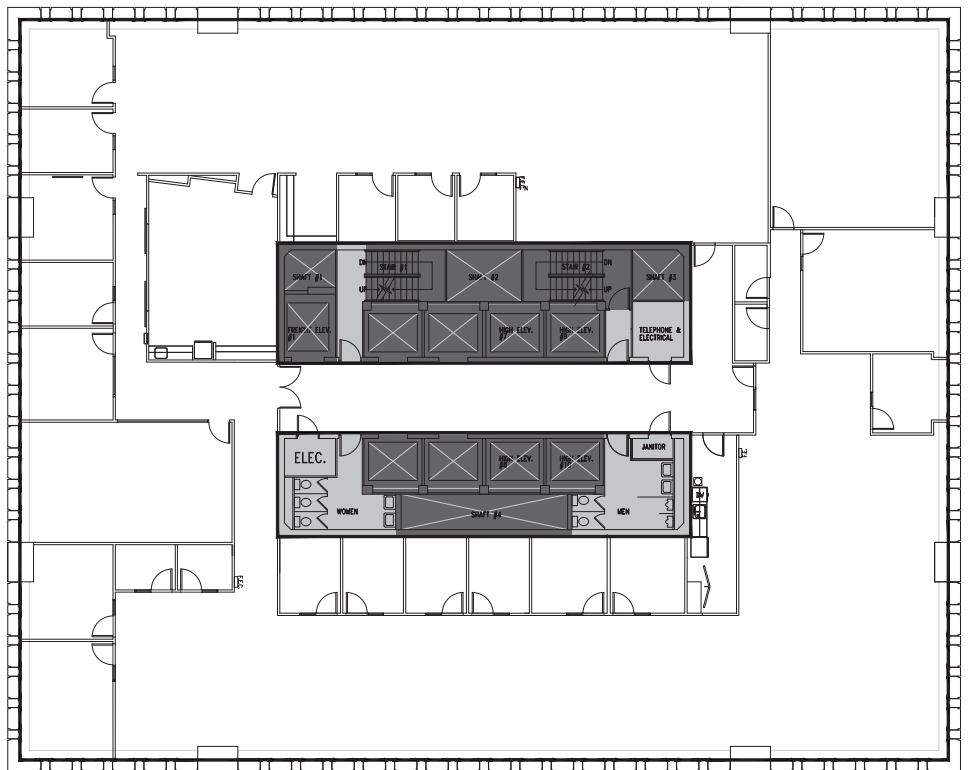
For virtual tour, visit:

bit.ly/3nTc8SR

SUITE 1400

14,947 RSF

N



SPACE FEATURES

- » Available now!
- » Open work area
- » Multiple private offices
- » Multiple conference rooms
- » Kitchenette and break room



METROTRACT
SEATTLE



FINANCIAL CENTER

1215 Fourth Avenue
Seattle, Washington 98101

For further information,
please contact:

Damon McCartney

(206) 838-7633

mccartney@broderickgroup.com

David Greenwood

(206) 838-7635

greenwood@broderickgroup.com

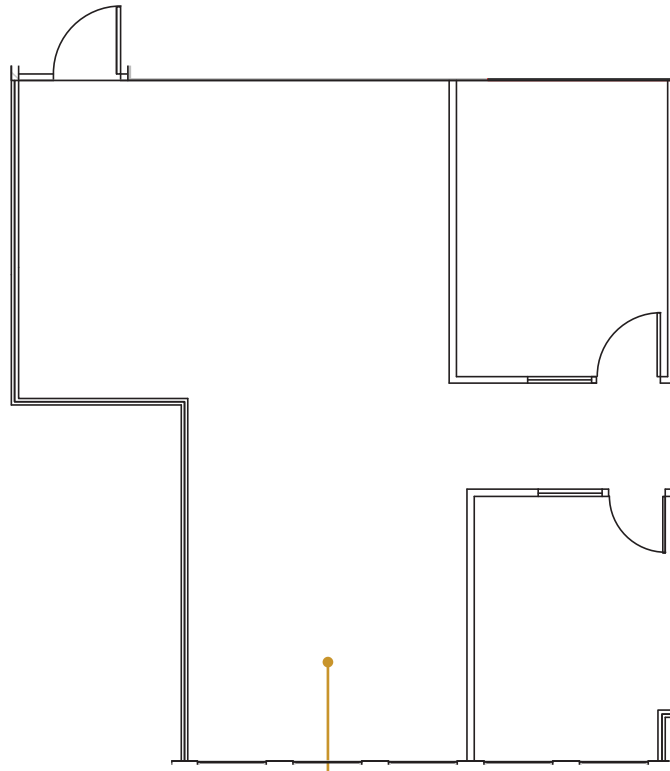


Broderick Group, Inc.
10500 NE 8th Street, Suite 900
Bellevue, WA 98004
main: (206) 838-5775

broderickgroup.com

The information contained herein has been given to us
by the owner or sources which we deem reliable.
We have no reason to doubt its accuracy, but we do not
guarantee it. Prospective tenants should carefully verify
all information contained herein.

SUITE 1325 1,077 RSF



Suite 1325

SPACE FEATURES

- » Available now!
- » 2 private offices
- » Open work area



METROTRACT
SEATTLE



FINANCIAL CENTER

1215 Fourth Avenue
Seattle, Washington 98101

For further information,
please contact:

Damon McCartney

(206) 838-7633

mccartney@broderickgroup.com

David Greenwood

(206) 838-7635

greenwood@broderickgroup.com



Broderick Group, Inc.
10500 NE 8th Street, Suite 900
Bellevue, WA 98004
main: (206) 838-5775

broderickgroup.com

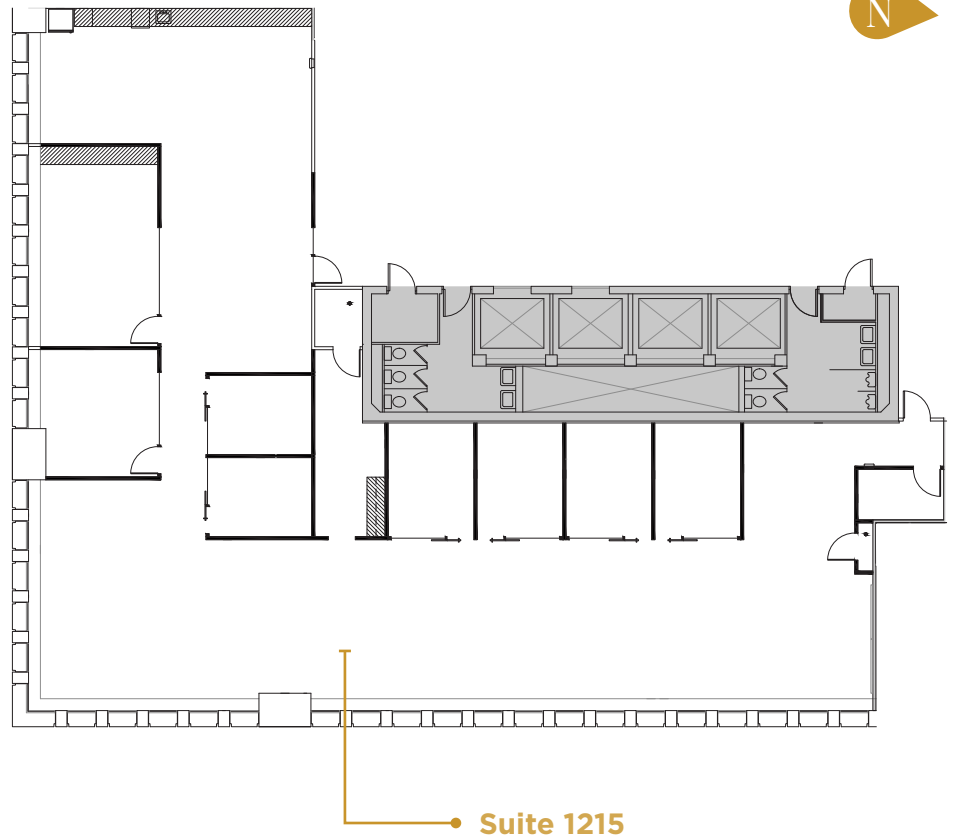
The information contained herein has been given to us by the owner or sources which we deem reliable. We have no reason to doubt its accuracy, but we do not guarantee it. Prospective tenants should carefully verify all information contained herein.

For virtual tour, visit:

bit.ly/42KjQ7h

SUITE 1215

5,826 RSF



SPACE FEATURES

- » Available now!
- » Brand new spec suite!
- » Multiple private offices
- » Kitchenette



METROTRACT
SEATTLE

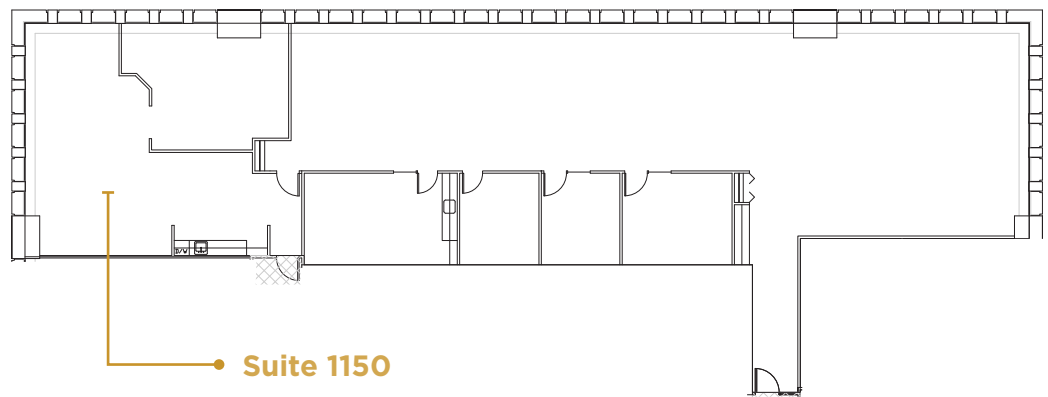


FINANCIAL CENTER

1215 Fourth Avenue
Seattle, Washington 98101

SUITE 1150

5,409 RSF



For further information,
please contact:

Damon McCartney

(206) 838-7633

mccartney@broderickgroup.com

David Greenwood

(206) 838-7635

greenwood@broderickgroup.com



Broderick Group, Inc.
10500 NE 8th Street, Suite 900
Bellevue, WA 98004
main: (206) 838-5775

broderickgroup.com

The information contained herein has been given to us by the owner or sources which we deem reliable. We have no reason to doubt its accuracy, but we do not guarantee it. Prospective tenants should carefully verify all information contained herein.

SPACE FEATURES

- » Available now!
- » Open work station area
- » Two private offices
- » One conference room
- » Kitchenette / Break Room
- » Contiguous option with Suite 1125 for a total of 8,268 RSF



METROTRACT
SEATTLE



FINANCIAL CENTER

1215 Fourth Avenue
Seattle, Washington 98101

For further information,
please contact:

Damon McCartney

(206) 838-7633

mccartney@broderickgroup.com

David Greenwood

(206) 838-7635

greenwood@broderickgroup.com



Broderick Group, Inc.
10500 NE 8th Street, Suite 900
Bellevue, WA 98004
main: (206) 838-5775

broderickgroup.com

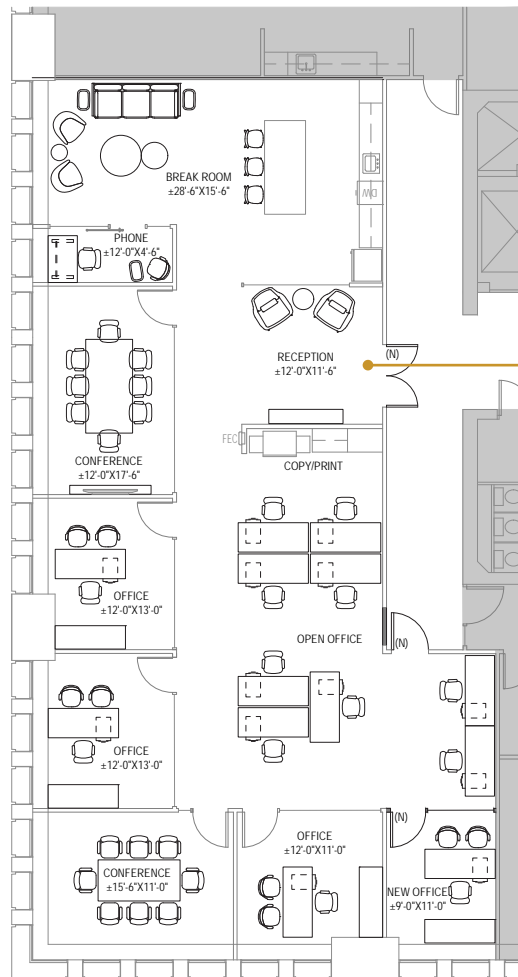
The information contained herein has been given to us by the owner or sources which we deem reliable. We have no reason to doubt its accuracy, but we do not guarantee it. Prospective tenants should carefully verify all information contained herein.

For virtual tour, visit:

bit.ly/4mMiOfI

SUITE 1125

3,179 RSF



Suite 1125

*Furniture is not available

SPACE FEATURES

- » Available now!
- » Lobby exposure
- » Open work station area
- » Multiple private offices
- » Multiple conference rooms
- » Contiguous option with Suite

1150 for a total of 8,268 RSF



METROTRACT
SEATTLE



FINANCIAL CENTER

1215 Fourth Avenue
Seattle, Washington 98101

For further information,
please contact:

Damon McCartney

(206) 838-7633

mccartney@broderickgroup.com

David Greenwood

(206) 838-7635

greenwood@broderickgroup.com



Broderick Group, Inc.
10500 NE 8th Street, Suite 900
Bellevue, WA 98004
main: (206) 838-5775

broderickgroup.com

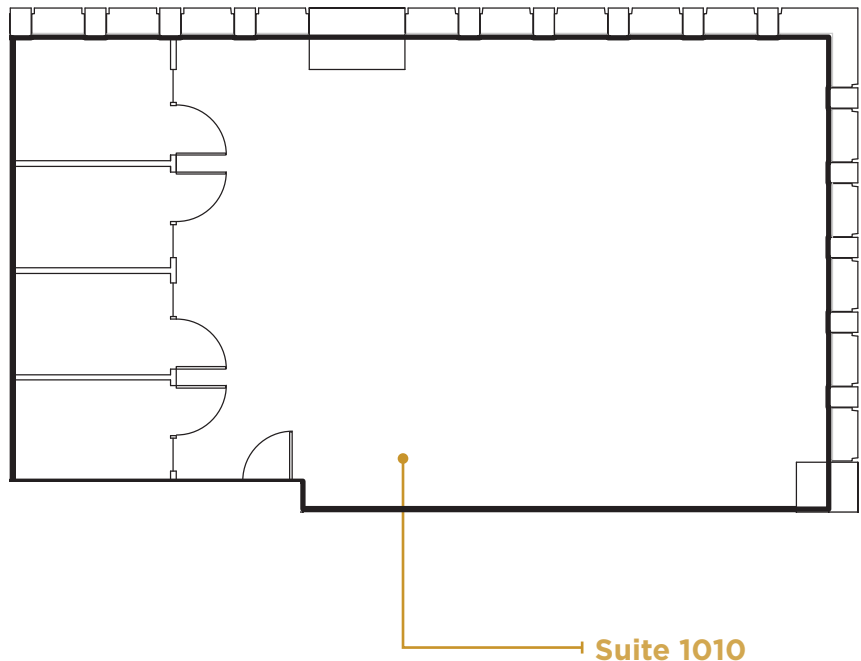
The information contained herein has been given to us by the owner or sources which we deem reliable. We have no reason to doubt its accuracy, but we do not guarantee it. Prospective tenants should carefully verify all information contained herein.

For virtual tour, visit:

bit.ly/2LXIbne

SUITE 1010

1,728 RSF



SPACE FEATURES

- » Available now!
- » 4 private offices
- » Open work area
- » Contiguous option with Suite 1000 for a total of 6,447 RSF



METROTRACT
SEATTLE



FINANCIAL CENTER

1215 Fourth Avenue
Seattle, Washington 98101

For further information,
please contact:

Damon McCartney
(206) 838-7633

mccartney@broderickgroup.com

David Greenwood
(206) 838-7635

greenwood@broderickgroup.com

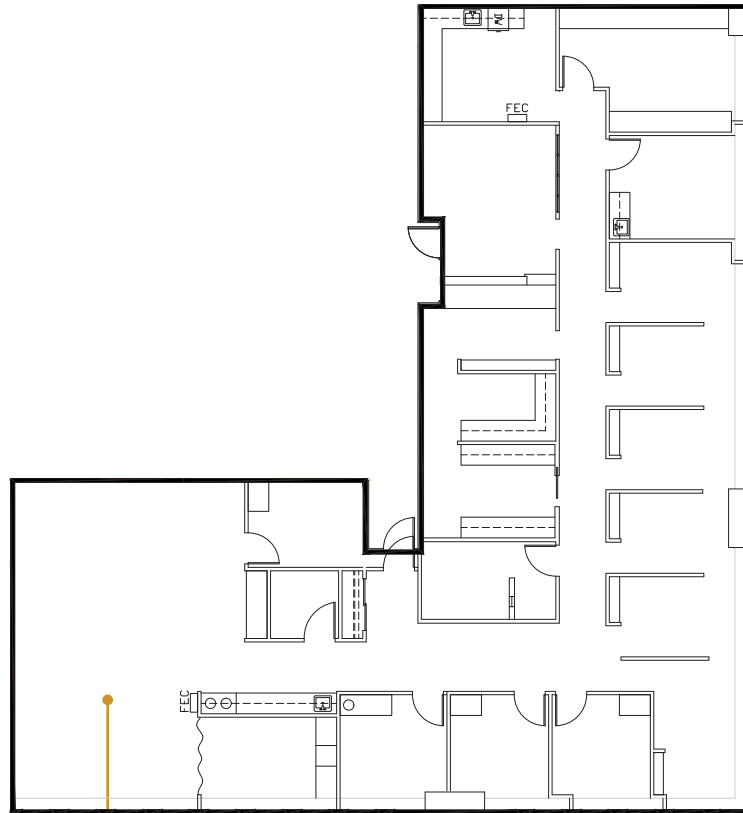


Broderick Group, Inc.
10500 NE 8th Street, Suite 900
Bellevue, WA 98004
main: (206) 838-5775

broderickgroup.com

The information contained herein has been given to us by the owner or sources which we deem reliable. We have no reason to doubt its accuracy, but we do not guarantee it. Prospective tenants should carefully verify all information contained herein.

SUITE 1000 4,719 RSF



Suite 1000

SPACE FEATURES

- » Available now!
- » Multiple private offices
- » Kitchenette
- » Contiguous option with Suite 1010 for a total of 6,447 RSF



METROTRACT
SEATTLE



FINANCIAL CENTER

1215 Fourth Avenue
Seattle, Washington 98101

For further information,
please contact:

Damon McCartney
(206) 838-7633

mccartney@broderickgroup.com

David Greenwood
(206) 838-7635

greenwood@broderickgroup.com

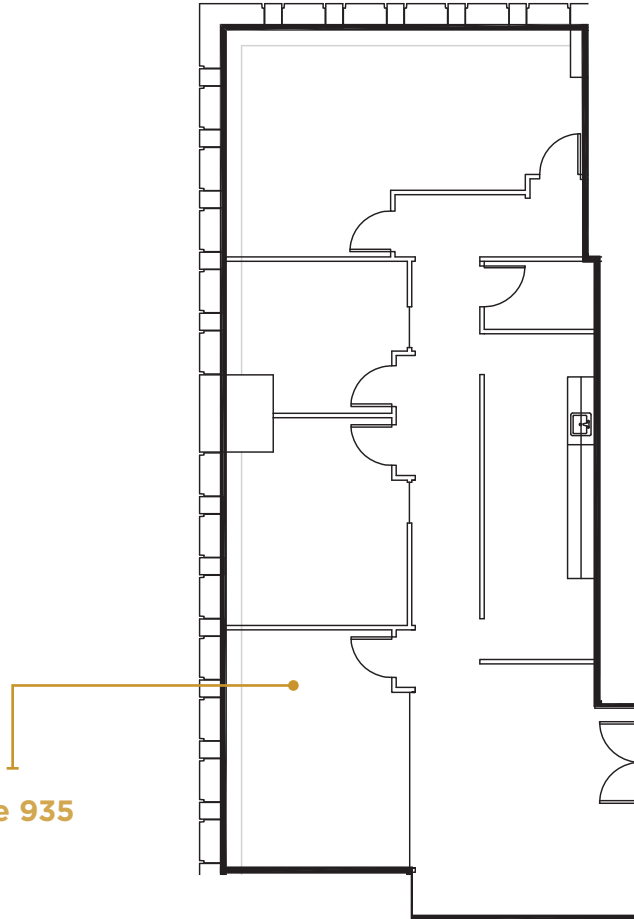


Broderick Group, Inc.
10500 NE 8th Street, Suite 900
Bellevue, WA 98004
main: (206) 838-5775

broderickgroup.com

The information contained herein has been given to us by the owner or sources which we deem reliable. We have no reason to doubt its accuracy, but we do not guarantee it. Prospective tenants should carefully verify all information contained herein.

SUITE 935 2,220 RSF



Suite 935

SPACE FEATURES

- » Available now!
- » Multiple private offices
- » Multiple conference rooms
- » Storage Area
- » Kitchenette



METROTRACT
SEATTLE



FINANCIAL CENTER

1215 Fourth Avenue
Seattle, Washington 98101

For further information,
please contact:

Damon McCartney

(206) 838-7633

mccartney@broderickgroup.com

David Greenwood

(206) 838-7635

greenwood@broderickgroup.com



Broderick Group, Inc.
10500 NE 8th Street, Suite 900
Bellevue, WA 98004
main: (206) 838-5775

broderickgroup.com

The information contained herein has been given to us by the owner or sources which we deem reliable. We have no reason to doubt its accuracy, but we do not guarantee it. Prospective tenants should carefully verify all information contained herein.

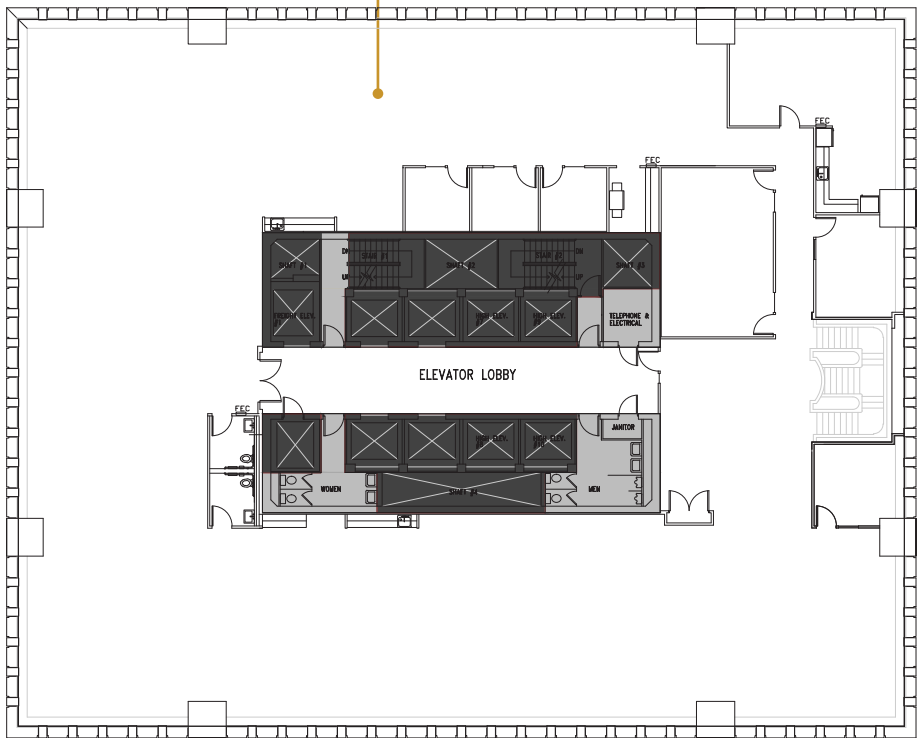
For virtual tour, visit:
bit.ly/325WRW6

SUITE 800

14,870 RSF



Suite 800



SPACE FEATURES

- » Available now!
- » Full floor
- » Kitchenette/break room
- » Multiple private offices
- » Conference rooms
- » 2 private restrooms
- » Large open work area
- » Interstitial staircase connecting both floors to create 29,744 of contiguous RSF



METROTRACT
SEATTLE



FINANCIAL CENTER

1215 Fourth Avenue
Seattle, Washington 98101

For further information,
please contact:

Damon McCartney

(206) 838-7633

mccartney@broderickgroup.com

David Greenwood

(206) 838-7635

greenwood@broderickgroup.com



Broderick Group, Inc.
10500 NE 8th Street, Suite 900
Bellevue, WA 98004
main: (206) 838-5775

broderickgroup.com

The information contained herein has been given to us by the owner or sources which we deem reliable. We have no reason to doubt its accuracy, but we do not guarantee it. Prospective tenants should carefully verify all information contained herein.

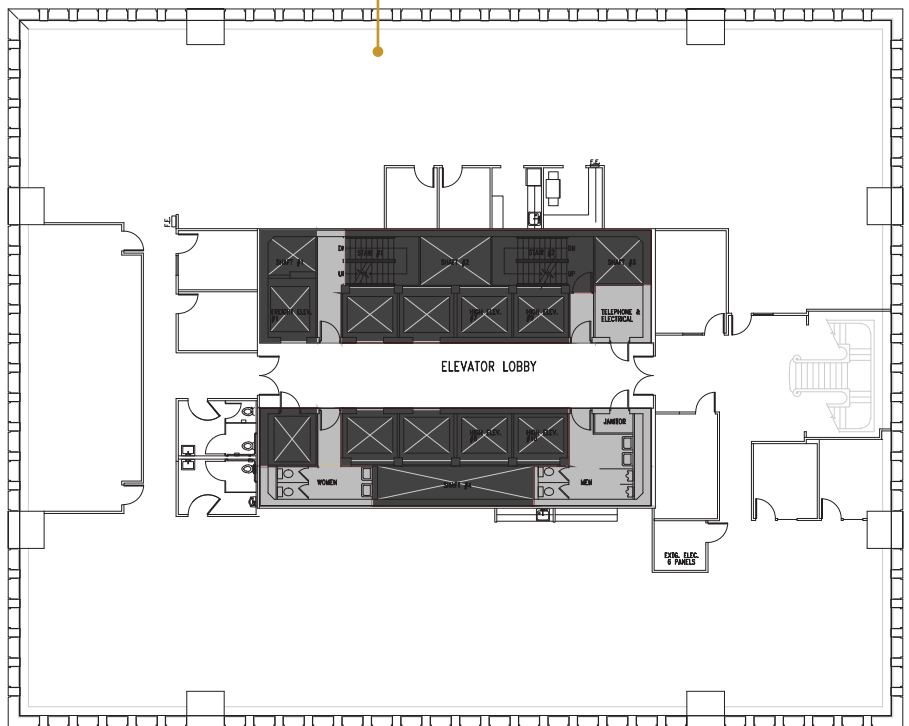
For virtual tour, visit:
bit.ly/2I1DF1a

SUITE 700

14,874 RSF

Suite 700

N



SPACE FEATURES

- » Available now!
- » Full floor
- » Kitchenette/break room
- » Multiple private offices
- » Large conference rooms
- » Private restrooms
- » Large open work area
- » Interstitial staircase connecting both floors to create 29,744 of contiguous RSF



METROTRACT
SEATTLE



FINANCIAL CENTER

1215 Fourth Avenue
Seattle, Washington 98101

SUITE 305 2,008 RSF



For further information,
please contact:

Damon McCartney

(206) 838-7633

mccartney@broderickgroup.com

David Greenwood

(206) 838-7635

greenwood@broderickgroup.com



Broderick Group, Inc.
10500 NE 8th Street, Suite 900
Bellevue, WA 98004
main: (206) 838-5775

broderickgroup.com

The information contained herein has been given to us by the owner or sources which we deem reliable. We have no reason to doubt its accuracy, but we do not guarantee it. Prospective tenants should carefully verify all information contained herein.

SPACE FEATURES

- » Available now!
- » Multiple private offices
- » Conference room
- » Large open work area
- » Kitchenette/break room
- » Storage



METROTRACT
SEATTLE



FINANCIAL CENTER

1215 Fourth Avenue
Seattle, Washington 98101

For further information,
please contact:

Damon McCartney

(206) 838-7633

mccartney@broderickgroup.com

David Greenwood

(206) 838-7635

greenwood@broderickgroup.com

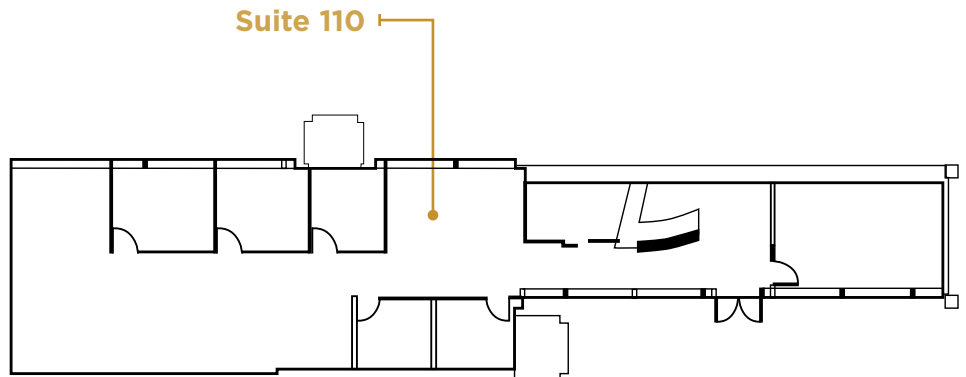


Broderick Group, Inc.
10500 NE 8th Street, Suite 900
Bellevue, WA 98004
main: (206) 838-5775

broderickgroup.com

The information contained herein has been given to us
by the owner or sources which we deem reliable.
We have no reason to doubt its accuracy, but we do not
guarantee it. Prospective tenants should carefully verify
all information contained herein.

SUITE 110 2,759 RSF



SPACE FEATURES

- » Available Now!
- » Ground floor space
- » Great signage opportunity



METROTRACT
SEATTLE

The logo consists of the letters 'M', 'T', and 'T' in a stylized, white, outlined font. The 'M' is formed by a single continuous line, while the 'T's are formed by two vertical lines and a horizontal top bar.

METROTRACT

SEATTLE

BRODERICK
• GROUP •

Broderick Group, Inc.
10500 NE 8th Street, Suite 900
Bellevue, WA 98004
main: (206) 838-5775

broderickgroup.com

Damon McCartney
(206) 838-7633

mccartney@broderickgroup.com

David Greenwood
(206) 838-7635

greenwood@broderickgroup.com