

# TOTEM VALLEY

## BUSINESS CENTER

12805 NE 125<sup>th</sup> Way | Kirkland, WA 98034



Northwest Building<sup>LLC</sup>

## HIGH QUALITY CLOSE-IN INCUBATOR INDUSTRIAL PRODUCT



## BUILDING FEATURES



**EXCELLENT ACCESS**



**GRADE-LEVEL LOADING**



**13' CLEAR HEIGHT**



**AMENITIES NEARBY**



**ABUNDANT PARKING**



*For more information or to schedule a tour, please contact:*



**CONNOR GILCHRIST**  
425.274.4286  
gilchrist@broderickgroup.com

**JEFF LIVINGSTON**  
425.274.4288  
livingston@broderickgroup.com

**RAWLEY HOLMBERG**  
425.274.4284  
holmberg@broderickgroup.com

*The information contained herein has been given to us by the owner or sources which we deem reliable. We have no reason to doubt its accuracy, but we do not guarantee it. Prospective tenants should carefully verify all information contained herein.*

# TOTEM VALLEY

## BUSINESS CENTER

12805 NE 125<sup>th</sup> Way | Kirkland, WA 98034

# AVAILABILITIES

BUILDING / SUITE	AVAILABLE SPACE	OFFICE SF	WHSE SF	AVAILABLE DATE
<u>B/12808</u>	2,400 RSF	1,275 RSF	1,125 RSF	60 days notice
<u>B/12804</u>	2,682 RSF	1,210 RSF	1,472 RSF	7/1/2026
<u>C/12919B</u>	4,158 RSF	2,389 RSF	1,769 RSF	12/1/2026
<u>F/12506/13004</u>	2,967 RSF	1,789 RSF	1,178 RSF	10/1/2026
<u>G/12525</u>	2,187 RSF	1,300 RSF	887 RSF	NOW

## SITE MAP



For more information or to schedule a tour, please contact:

**CONNOR GILCHRIST**  
425.274.4286  
gilchrist@broderickgroup.com

**JEFF LIVINGSTON**  
425.274.4288  
livingston@broderickgroup.com

**RAWLEY HOLMBERG**  
425.274.4284  
holmberg@broderickgroup.com

The information contained herein has been given to us by the owner or sources which we deem reliable. We have no reason to doubt its accuracy, but we do not guarantee it. Prospective tenants should carefully verify all information contained herein.

# TOTEM VALLEY BUSINESS CENTER

12912 NE 125<sup>th</sup> Way | Kirkland, WA 98034

## BUILDING B

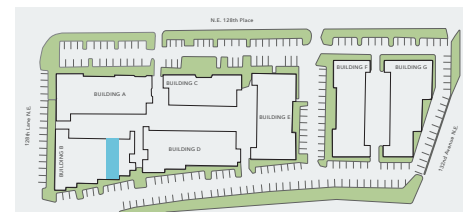
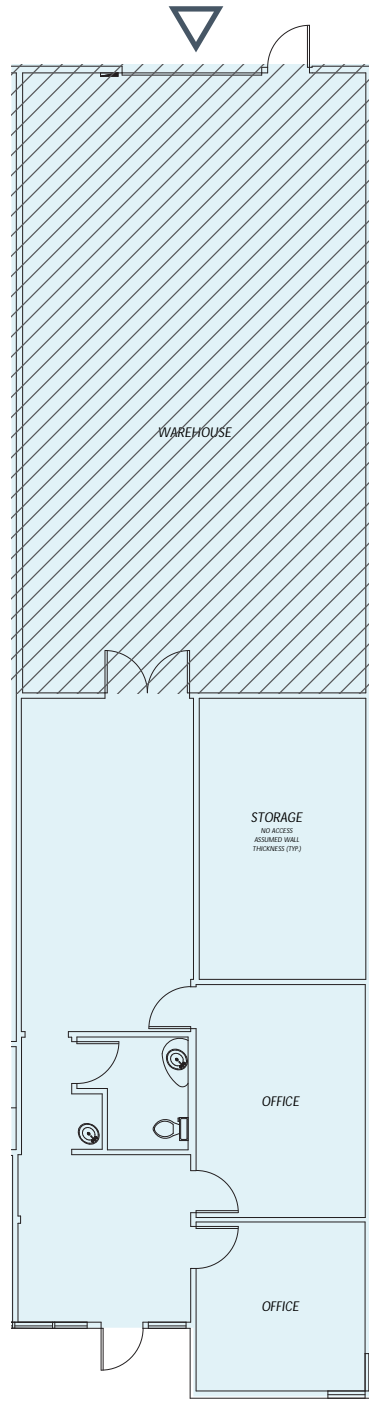
### SUITE B12808

TOTAL: 2,400 RSF

WHSE: 1,125 RSF

OFFICE: 1,275 RSF

AVAILABLE WITH  
60 DAYS' NOTICE



↑ BACK TO AVAILABILITY



For more information or to schedule a tour, please contact:

**CONNOR GILCHRIST**  
425.274.4286  
gilchrist@broderickgroup.com

**JEFF LIVINGSTON**  
425.274.4288  
livingston@broderickgroup.com

**RAWLEY HOLMBERG**  
425.274.4284  
holmberg@broderickgroup.com

The information contained herein has been given to us by the owner or sources which we deem reliable. We have no reason to doubt its accuracy, but we do not guarantee it. Prospective tenants should carefully verify all information contained herein.

# TOTEM VALLEY

## BUSINESS CENTER

12912 NE 125<sup>th</sup> Way | Kirkland, WA 98034

# BUILDING B

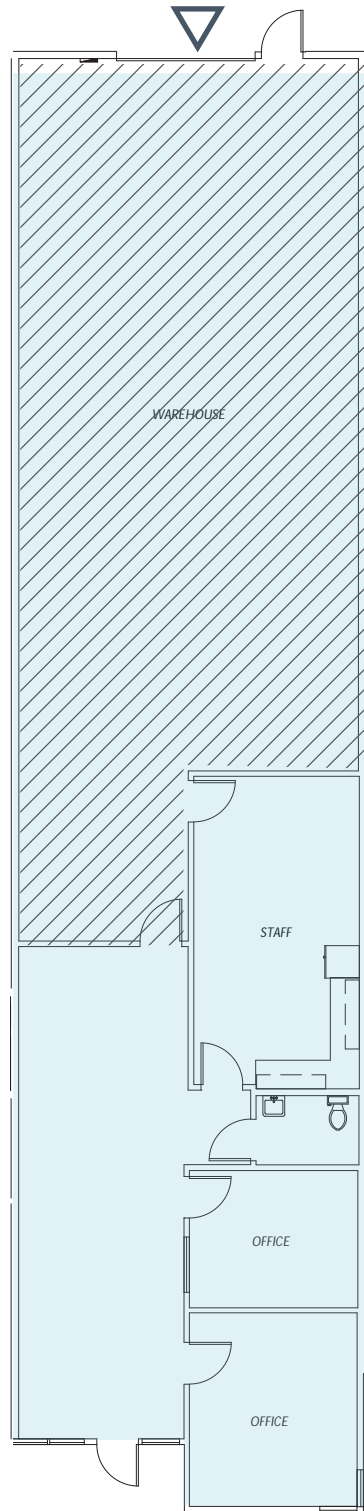
## SUITE B12804

TOTAL: 2,682 RSF

WHSE: 1,472 RSF

OFFICE: 1,210 RSF

AVAILABLE 7/1/2026



↑ BACK TO AVAILABILITY



For more information or to schedule a tour, please contact:

**CONNOR GILCHRIST**  
425.274.4286  
gilchrist@broderickgroup.com

**JEFF LIVINGSTON**  
425.274.4288  
livingston@broderickgroup.com

**RAWLEY HOLMBERG**  
425.274.4284  
holmberg@broderickgroup.com

The information contained herein has been given to us by the owner or sources which we deem reliable. We have no reason to doubt its accuracy, but we do not guarantee it. Prospective tenants should carefully verify all information contained herein.

# TOTEM VALLEY BUSINESS CENTER

12912 NE 125<sup>th</sup> Way | Kirkland, WA 98034

## BUILDING C

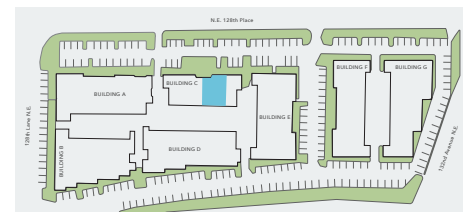
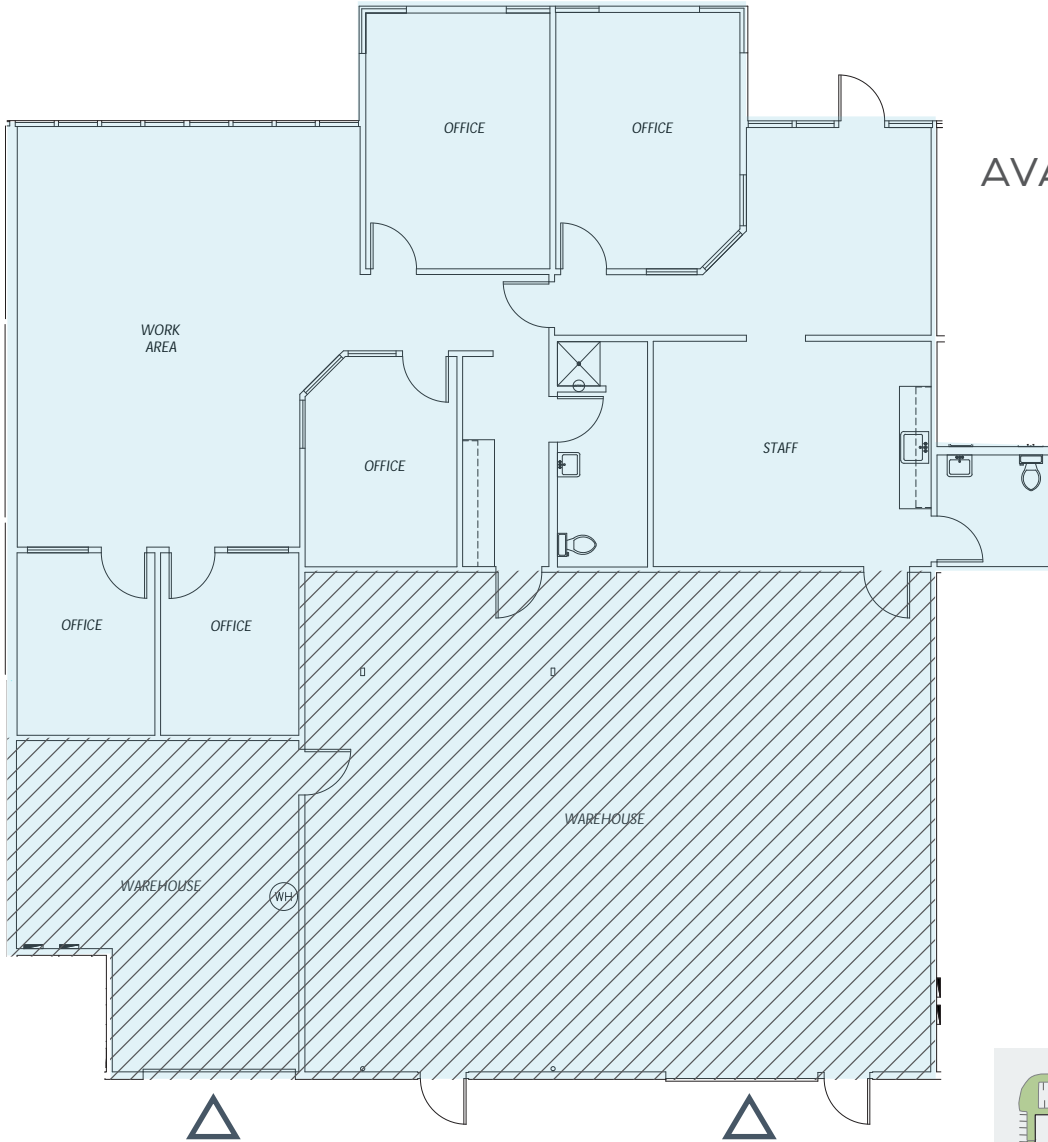
### SUITE C12919B

TOTAL: 4,158 RSF

WHSE: 1,769 RSF

OFFICE: 2,389 RSF

AVAILABLE 12/1/2026



WAREHOUSE 

GRADE LEVEL DOOR 

 **BACK TO AVAILABILITY**



For more information or to schedule a tour, please contact:

**CONNOR GILCHRIST**  
425.274.4286  
gilchrist@broderickgroup.com

**JEFF LIVINGSTON**  
425.274.4288  
livingston@broderickgroup.com

**RAWLEY HOLMBERG**  
425.274.4284  
holmberg@broderickgroup.com

The information contained herein has been given to us by the owner or sources which we deem reliable. We have no reason to doubt its accuracy, but we do not guarantee it. Prospective tenants should carefully verify all information contained herein.

# TOTEM VALLEY BUSINESS CENTER

12912 NE 125<sup>th</sup> Way | Kirkland, WA 98034

## BUILDING F

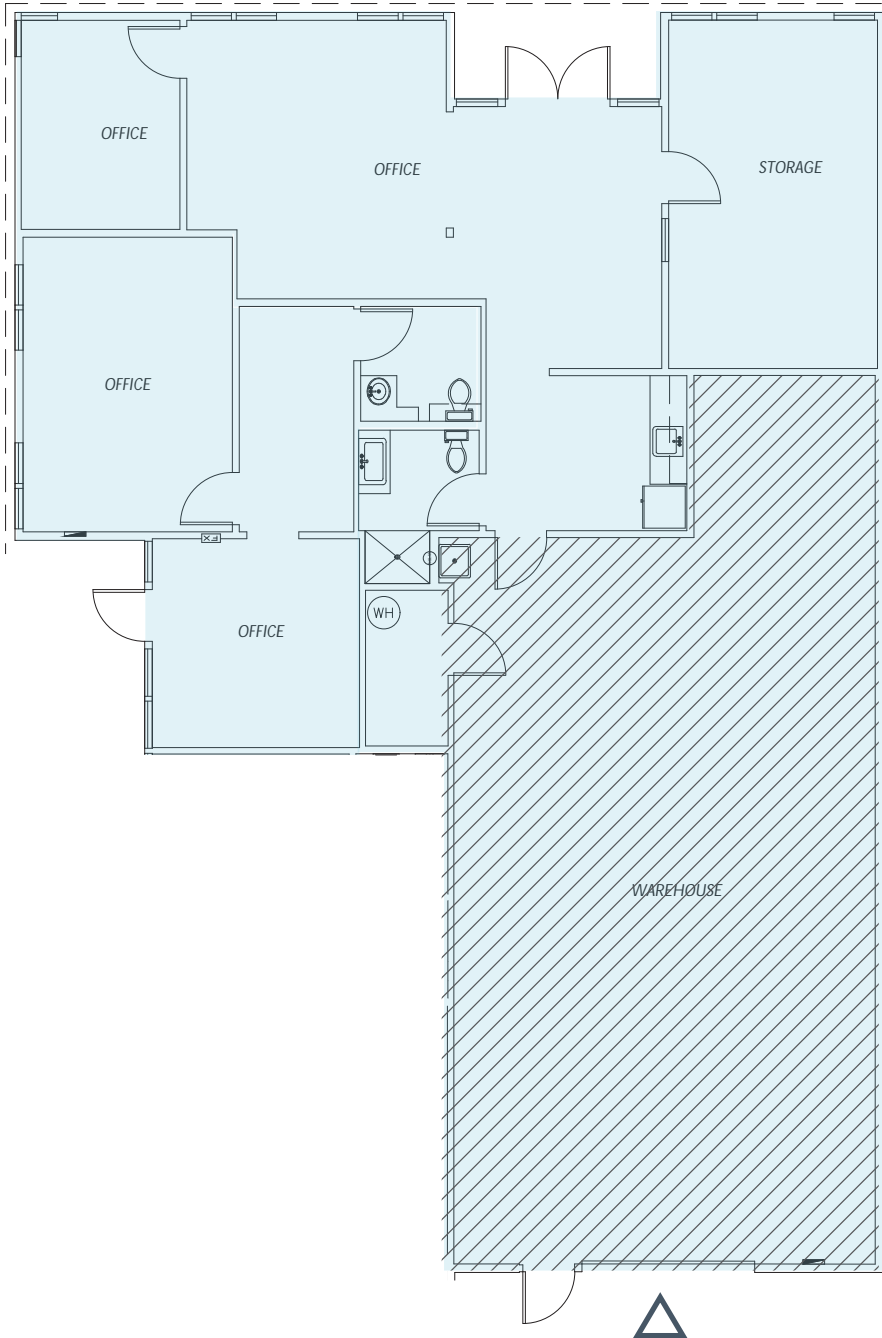
### SUITE F12506/13004

TOTAL: 2,967 RSF

WHSE: 1,178 RSF

OFFICE: 1,789 RSF

AVAILABLE 10/1/2026



WAREHOUSE



GRADE LEVEL DOOR



↑ BACK TO AVAILABILITY



For more information or to schedule a tour, please contact:

**CONNOR GILCHRIST**  
425.274.4286  
gilchrist@broderickgroup.com

**JEFF LIVINGSTON**  
425.274.4288  
livingston@broderickgroup.com

**RAWLEY HOLMBERG**  
425.274.4284  
holmberg@broderickgroup.com

The information contained herein has been given to us by the owner or sources which we deem reliable. We have no reason to doubt its accuracy, but we do not guarantee it. Prospective tenants should carefully verify all information contained herein.

# TOTEM VALLEY

## BUSINESS CENTER

12912 NE 125<sup>th</sup> Way | Kirkland, WA 98034

# BUILDING G

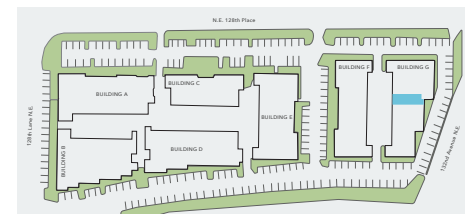
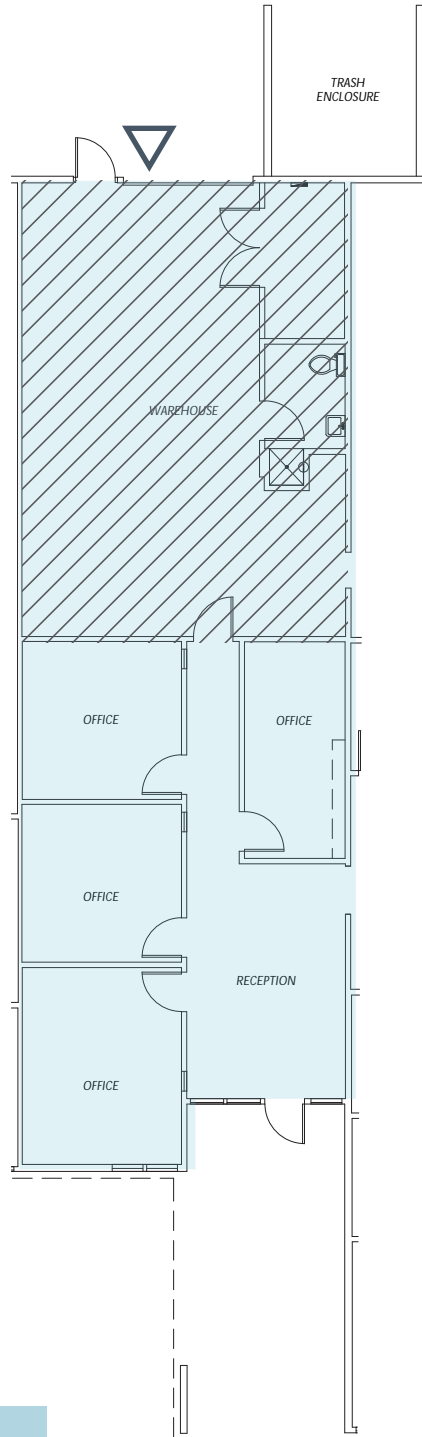
## SUITE G12525

TOTAL: 2,187 RSF

WHSE: 887 RSF

OFFICE: 1,300 RSF

AVAILABLE NOW



WAREHOUSE



GRADE LEVEL DOOR



↑ BACK TO AVAILABILITY



For more information or to schedule a tour, please contact:

**CONNOR GILCHRIST**  
425.274.4286  
gilchrist@broderickgroup.com

**JEFF LIVINGSTON**  
425.274.4288  
livingston@broderickgroup.com

**RAWLEY HOLMBERG**  
425.274.4284  
holmberg@broderickgroup.com

The information contained herein has been given to us by the owner or sources which we deem reliable. We have no reason to doubt its accuracy, but we do not guarantee it. Prospective tenants should carefully verify all information contained herein.

# TOTEM VALLEY BUSINESS CENTER

12805 NE 125<sup>th</sup> Way | Kirkland, WA 98034

## AREA AMENITIES



- |                                |  |  |
|--------------------------------|--|--|
| <b>1</b> QFC                   | <b>11</b> Fred Meyer                     | <b>21</b> Rite Aid                     |
| <b>2</b> Five Guys             | <b>12</b> EvergreenHealth Medical Center | <b>22</b> LA Fitness                   |
| <b>3</b> Courtyard by Marriott | <b>13</b> Key Bank                       | <b>23</b> Northwest Cellars            |
| <b>4</b> Papa Murphy's         | <b>14</b> The Village at Totem Lake      | <b>24</b> Totem Square Shopping Center |
| <b>5</b> Olive Garden          | <b>15</b> Chipotle                       | <b>25</b> Subway                       |
| <b>6</b> Starbucks             | <b>16</b> MOD Pizza                      | <b>26</b> 7-Eleven                     |
| <b>7</b> Azteca                | <b>17</b> Wells Fargo                    | <b>27</b> Teriyaki Plus                |
| <b>8</b> Wendy's               | <b>18</b> Bank of America                | <b>28</b> Shari's                      |
| <b>9</b> Lowe's                | <b>19</b> Chick-fil-A                    | <b>29</b> Gold's Gym                   |
| <b>10</b> Jimmy John's         | <b>20</b> Comfort Inn                    |  |

For more information or to schedule a tour, please contact:



**CONNOR GILCHRIST**  
425.274.4286  
gilchrist@broderickgroup.com

**JEFF LIVINGSTON**  
425.274.4288  
livingston@broderickgroup.com

**RAWLEY HOLMBERG**  
425.274.4284  
holmberg@broderickgroup.com

The information contained herein has been given to us by the owner or sources which we deem reliable. We have no reason to doubt its accuracy, but we do not guarantee it. Prospective tenants should carefully verify all information contained herein.

# TOTEM VALLEY BUSINESS CENTER

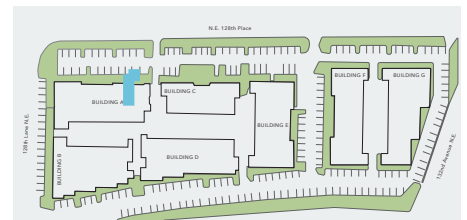
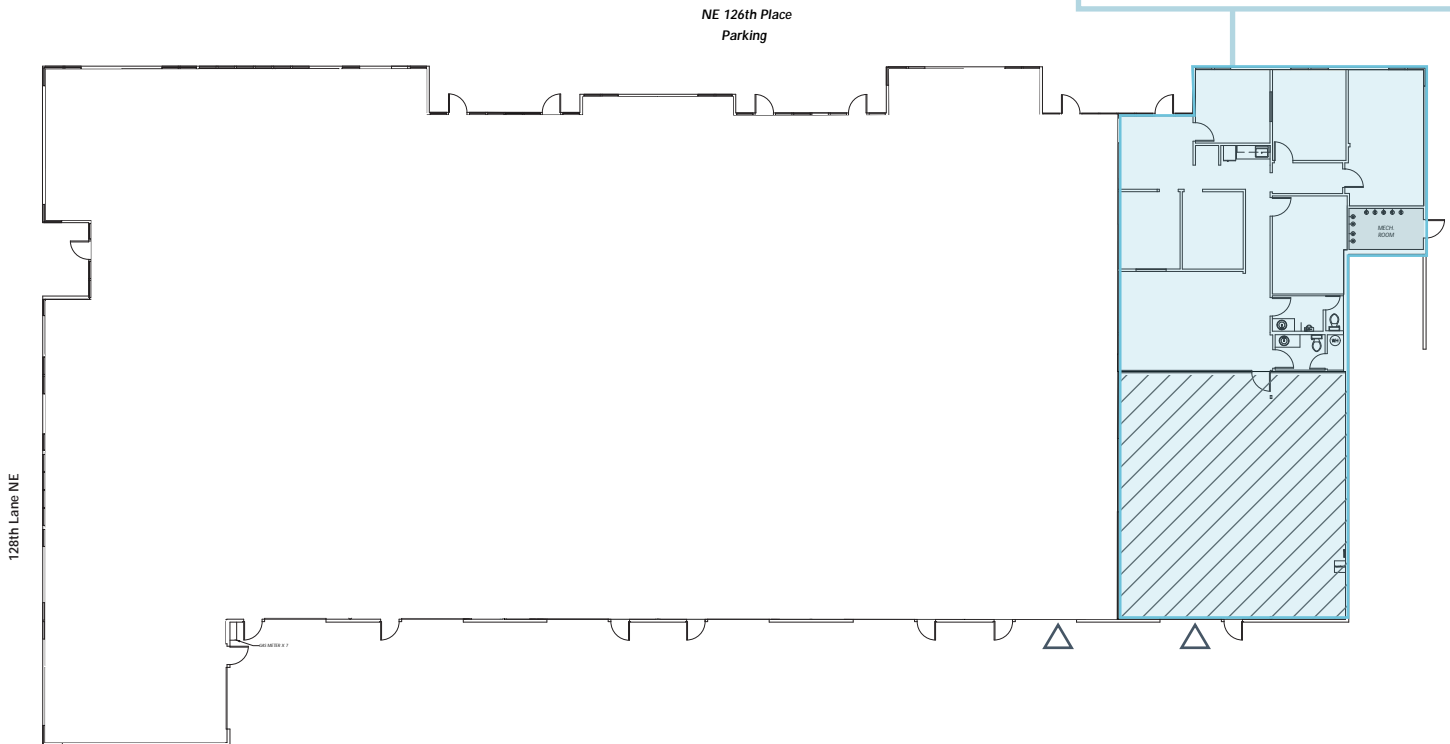
12912 NE 125<sup>th</sup> Way | Kirkland, WA 98034

## BUILDING B4



### SUITE B465

3,754 RSF  
AVAILABLE NOW



WAREHOUSE



GRADE LEVEL DOOR



 [BACK TO AVAILABILITY](#)



For more information or to schedule a tour, please contact:

**CONNOR GILCHRIST**  
425.274.4286  
gilchrist@broderickgroup.com

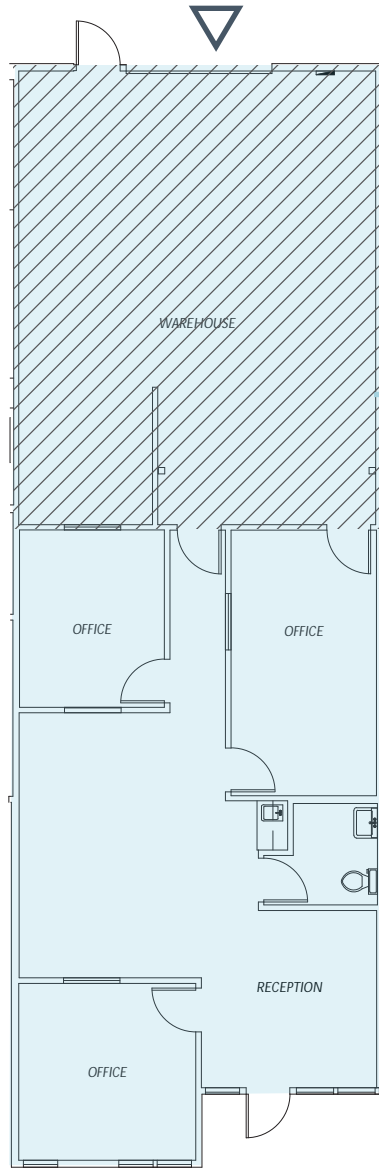
**JEFF LIVINGSTON**  
425.274.4288  
livingston@broderickgroup.com

**RAWLEY HOLMBERG**  
425.274.4284  
holmberg@broderickgroup.com

# TOTEM VALLEY BUSINESS CENTER

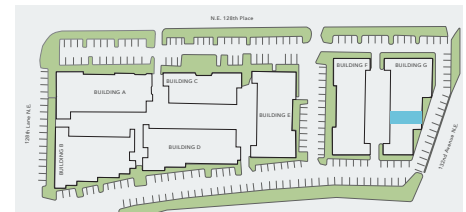
12912 NE 125<sup>th</sup> Way | Kirkland, WA 98034

## BUILDING G



### SUITE G12517

TOTAL: 1,919 RSF  
WHSE: 799 RSF  
OFFICE: 1,120 RSF  
AVAILABLE 4/1/2026



WAREHOUSE



GRADE LEVEL DOOR



 **BACK TO AVAILABILITY**



For more information or to schedule a tour, please contact:

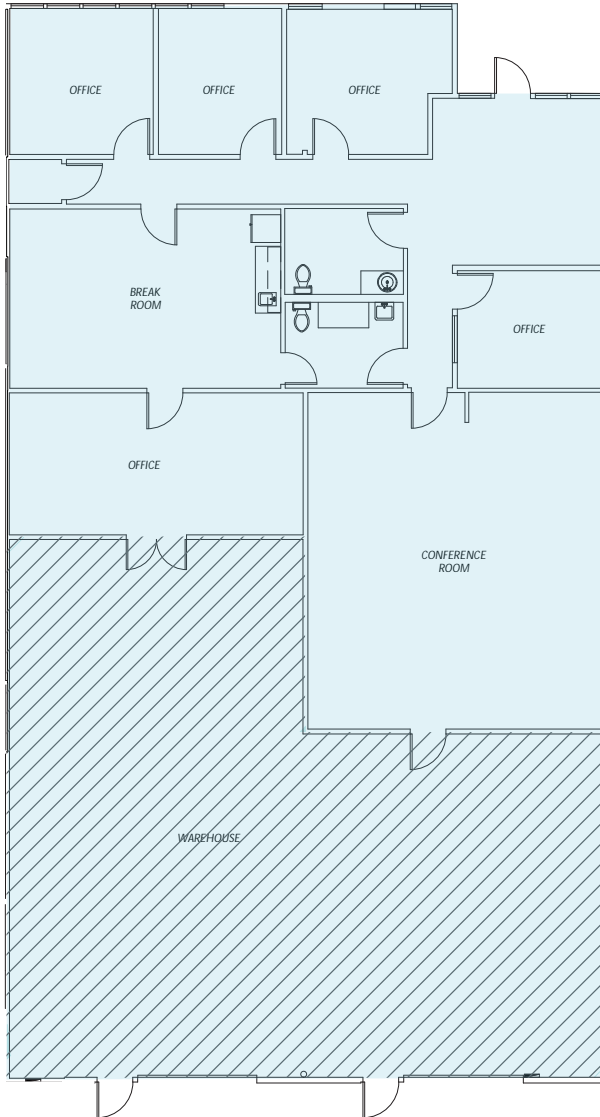
**CONNOR GILCHRIST**  
425.274.4286  
gilchrist@broderickgroup.com

**JEFF LIVINGSTON**  
425.274.4288  
livingston@broderickgroup.com

**RAWLEY HOLMBERG**  
425.274.4284  
holmberg@broderickgroup.com

The information contained herein has been given to us by the owner or sources which we deem reliable. We have no reason to doubt its accuracy, but we do not guarantee it. Prospective tenants should carefully verify all information contained herein.

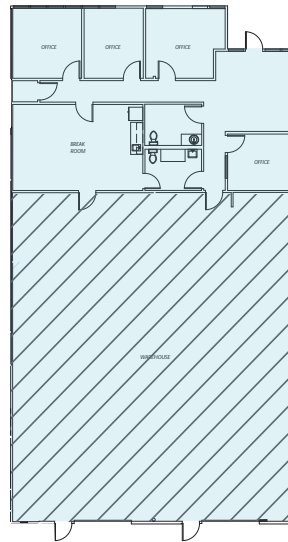
## CURRENT SPACE PLAN



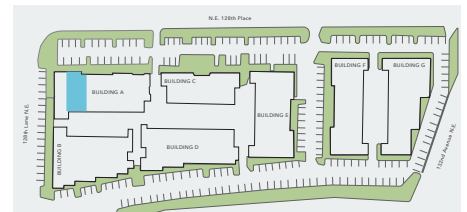
### SUITE A12805

TOTAL: 4,473 RSF  
 WHSE: 1,876 RSF  
 OFFICE: 2,597 RSF

## ALTERNATE SPACE PLAN



WHSE: 2,911 RSF  
 OFFICE: 1,562 RSF



WAREHOUSE



GRADE LEVEL DOOR



↑ BACK TO AVAILABILITY



For more information or to schedule a tour, please contact:

**CONNOR GILCHRIST**  
 425.274.4286  
 gilchrist@broderickgroup.com

**JEFF LIVINGSTON**  
 425.274.4288  
 livingston@broderickgroup.com

**RAWLEY HOLMBERG**  
 425.274.4284  
 holmberg@broderickgroup.com

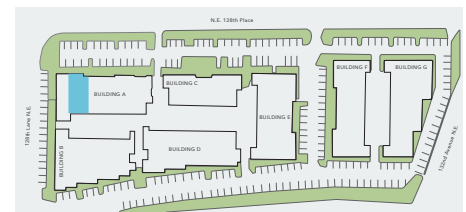
# TOTEM VALLEY

## BUSINESS CENTER

12912 NE 125<sup>th</sup> Way | Kirkland, WA 98034

# BUILDING A

↑ BACK TO AVAILABILITY



WAREHOUSE



GRADE LEVEL DOOR



For more information or to schedule a tour, please contact:

**CONNOR GILCHRIST**  
425.274.4286  
gilchrist@broderickgroup.com

**JEFF LIVINGSTON**  
425.274.4288  
livingston@broderickgroup.com

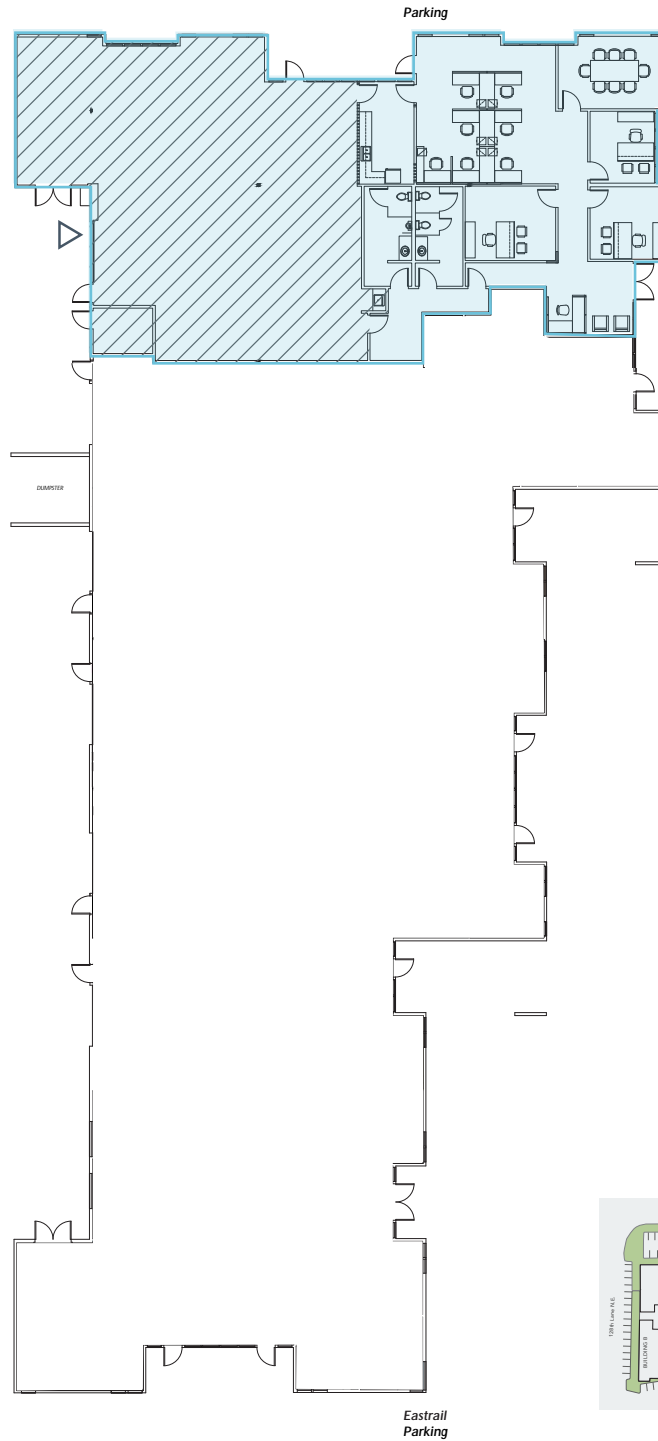
**RAWLEY HOLMBERG**  
425.274.4284  
holmberg@broderickgroup.com

The information contained herein has been given to us by the owner or sources which we deem reliable. We have no reason to doubt its accuracy, but we do not guarantee it. Prospective tenants should carefully verify all information contained herein.

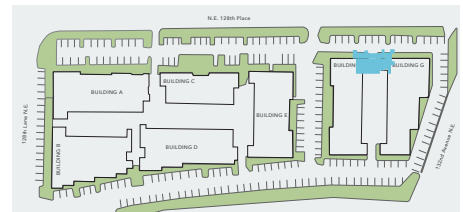
# TOTEM VALLEY BUSINESS CENTER

12912 NE 125<sup>th</sup> Way | Kirkland, WA 98034

## BUILDING A2



**SUITE A228**  
5,267 RSF  
AVAILABLE NOW



**WAREHOUSE** 

**GRADE LEVEL DOOR** 

 **BACK TO AVAILABILITY**



For more information or to schedule a tour, please contact:

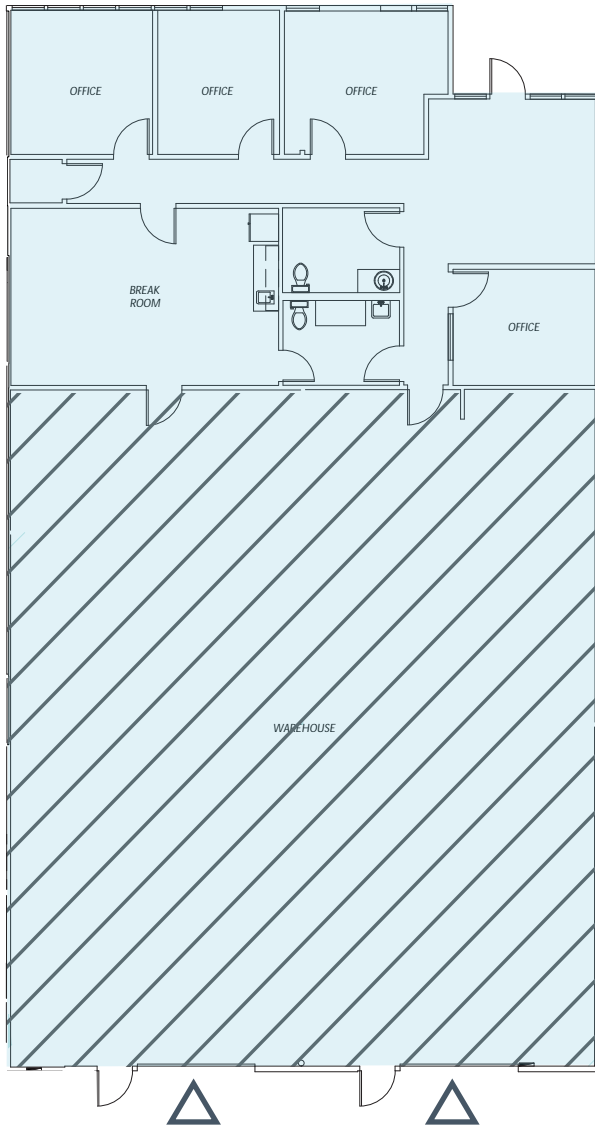
**CONNOR GILCHRIST**  
425.274.4286  
gilchrist@broderickgroup.com

**JEFF LIVINGSTON**  
425.274.4288  
livingston@broderickgroup.com

**RAWLEY HOLMBERG**  
425.274.4284  
holmberg@broderickgroup.com

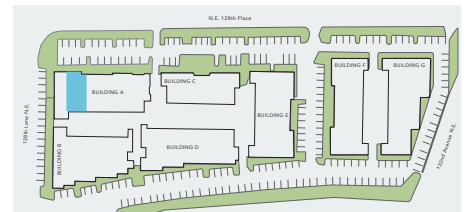
The information contained herein has been given to us by the owner or sources which we deem reliable. We have no reason to doubt its accuracy, but we do not guarantee it. Prospective tenants should carefully verify all information contained herein.

## CURRENT SPACE PLAN



### SUITE A12805

TOTAL: 4,473 RSF  
WHSE: 2,911 RSF  
OFFICE: 1,562 RSF



↑ **BACK TO AVAILABILITY**



For more information or to schedule a tour, please contact:

**CONNOR GILCHRIST**  
425.274.4286  
gilchrist@broderickgroup.com

**JEFF LIVINGSTON**  
425.274.4288  
livingston@broderickgroup.com

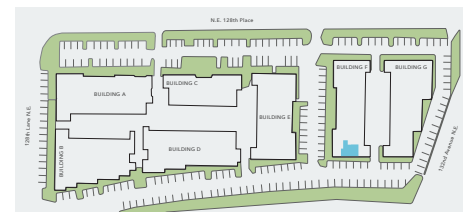
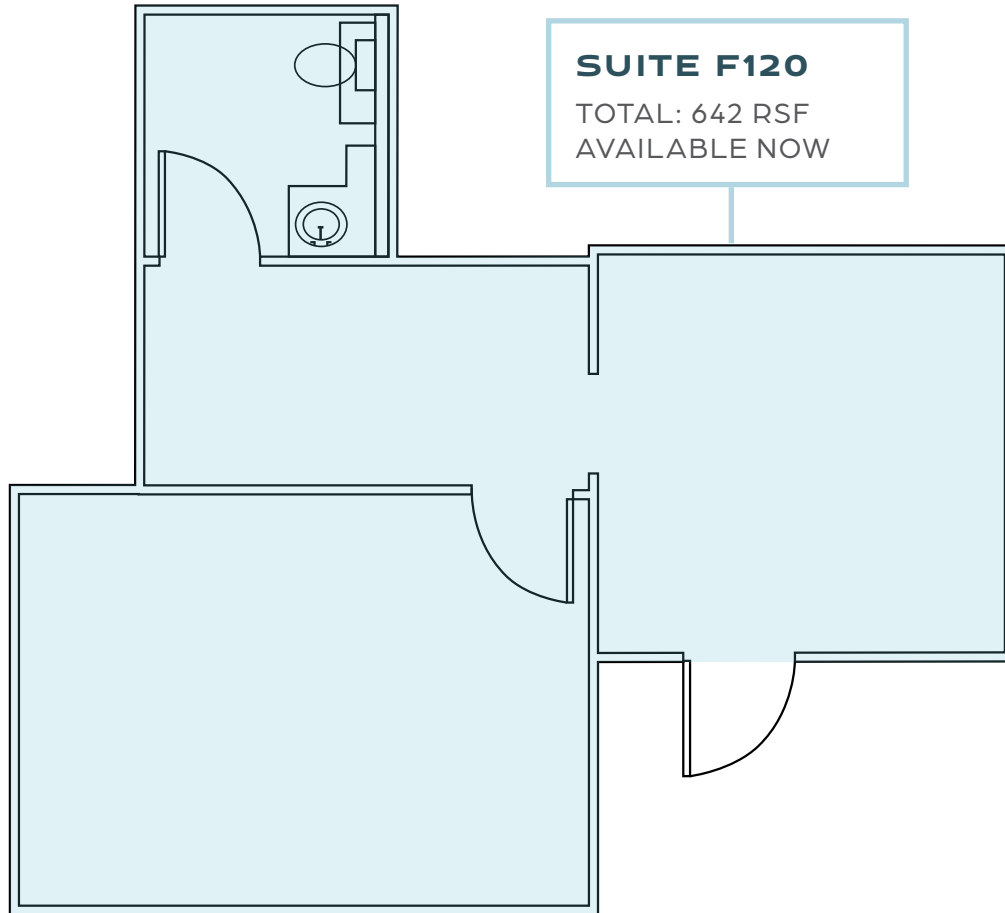
**RAWLEY HOLMBERG**  
425.274.4284  
holmberg@broderickgroup.com

# TOTEM VALLEY

## BUSINESS CENTER

12805 NE 125<sup>th</sup> Way | Kirkland, WA 98034

# BUILDING F



WAREHOUSE



GRADE LEVEL DOOR



 **BACK TO AVAILABILITY**



For more information or to schedule a tour, please contact:

**CONNOR GILCHRIST**  
425.274.4286  
gilchrist@broderickgroup.com

**JEFF LIVINGSTON**  
425.274.4288  
livingston@broderickgroup.com

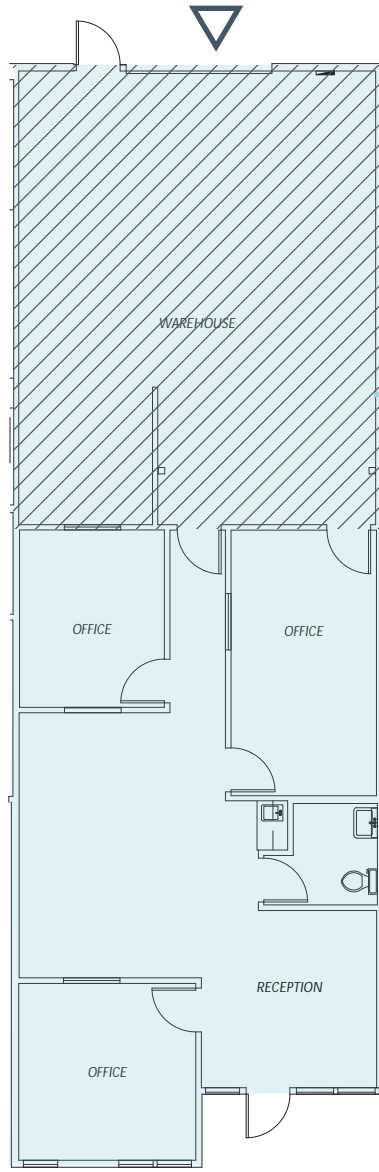
**RAWLEY HOLMBERG**  
425.274.4284  
holmberg@broderickgroup.com

The information contained herein has been given to us by the owner or sources which we deem reliable. We have no reason to doubt its accuracy, but we do not guarantee it. Prospective tenants should carefully verify all information contained herein.

# TOTEM VALLEY BUSINESS CENTER

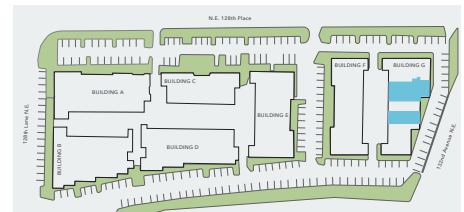
12912 NE 125<sup>th</sup> Way | Kirkland, WA 98034

## BUILDING G



### SUITE G12517

TOTAL: 1,919 RSF  
WHSE: 799 RSF  
OFFICE: 1,120 RSF  
AVAILABLE 4/1/2026



WAREHOUSE



GRADE LEVEL DOOR



 **BACK TO AVAILABILITY**



For more information or to schedule a tour, please contact:

**CONNOR GILCHRIST**  
425.274.4286  
gilchrist@broderickgroup.com

**JEFF LIVINGSTON**  
425.274.4288  
livingston@broderickgroup.com

**RAWLEY HOLMBERG**  
425.274.4284  
holmberg@broderickgroup.com

The information contained herein has been given to us by the owner or sources which we deem reliable. We have no reason to doubt its accuracy, but we do not guarantee it. Prospective tenants should carefully verify all information contained herein.

# TOTEM VALLEY

## BUSINESS CENTER

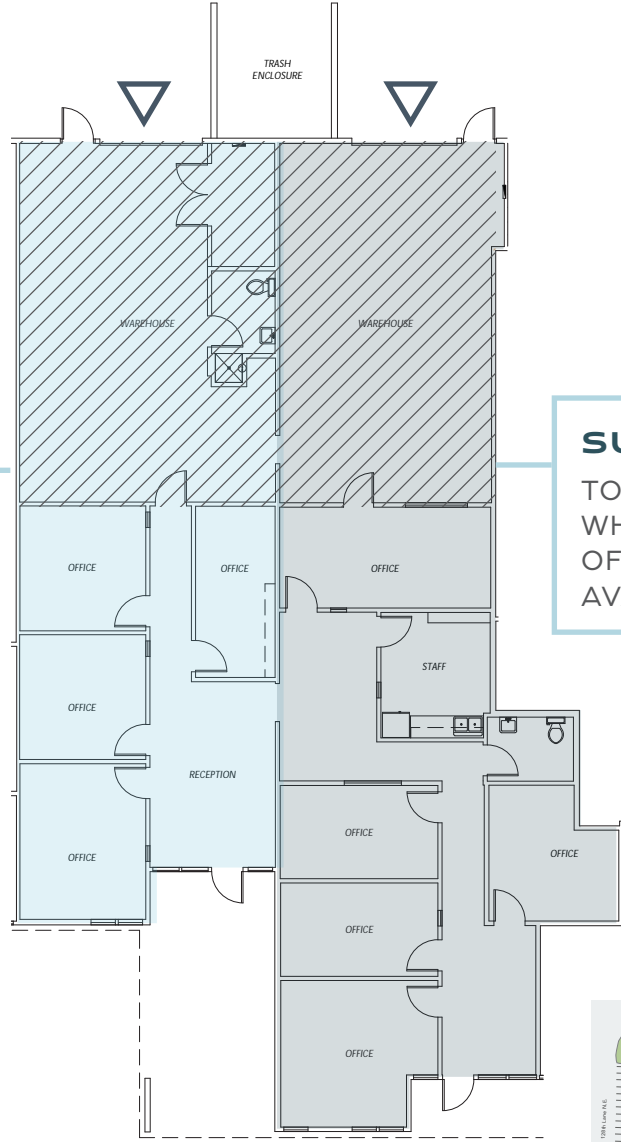
12912 NE 125<sup>th</sup> Way | Kirkland, WA 98034

# BUILDING G

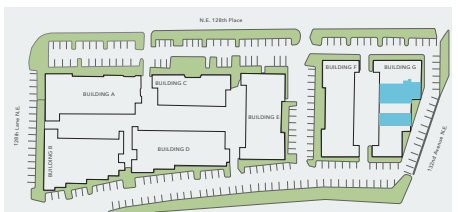


**CAN BE COMBINED FOR A TOTAL OF 4,504 SF**

**SUITE G12525**  
 TOTAL: 2,187 RSF  
 WHSE: 1,300 RSF  
 OFFICE: 887 RSF  
 AVAILABLE 1/1/2026



**SUITE G12529**  
 TOTAL: 2,317 RSF  
 WHSE: 951 RSF  
 OFFICE: 1,366 RSF  
 AVAILABLE 1/1/2026



**WAREHOUSE** 

**GRADE LEVEL DOOR** 

 **BACK TO AVAILABILITY**



For more information or to schedule a tour, please contact:

**CONNOR GILCHRIST**  
 425.274.4286  
 gilchrist@broderickgroup.com

**JEFF LIVINGSTON**  
 425.274.4288  
 livingston@broderickgroup.com

**RAWLEY HOLMBERG**  
 425.274.4284  
 holmberg@broderickgroup.com

The information contained herein has been given to us by the owner or sources which we deem reliable. We have no reason to doubt its accuracy, but we do not guarantee it. Prospective tenants should carefully verify all information contained herein.