

FOR LEASE

Grace Ave Contractor's Plaza | Office Space
1311-1315 SE Grace Ave | Battle Ground, WA 98604



900 Washington St, Suite 850, Vancouver, WA
360.750.5595 | www.fg-cre.com



Contractor's Plaza

Property Features

- ◆ Located in a well-maintained business park
- ◆ Ideal for small business use
- ◆ Great natural light
- ◆ Parking: Ample on-site

Available:

- **Suite 201** – 2,555 SF Second Floor Office

FOR MORE INFORMATION:

Garret Harper, SIOR, CCIM
360.597.0572 | gharper@fg-cre.com



FOR LEASE

Grace Ave Contractor's Plaza | Office Space
1311-1315 SE Grace Ave | Battle Ground, WA 98604



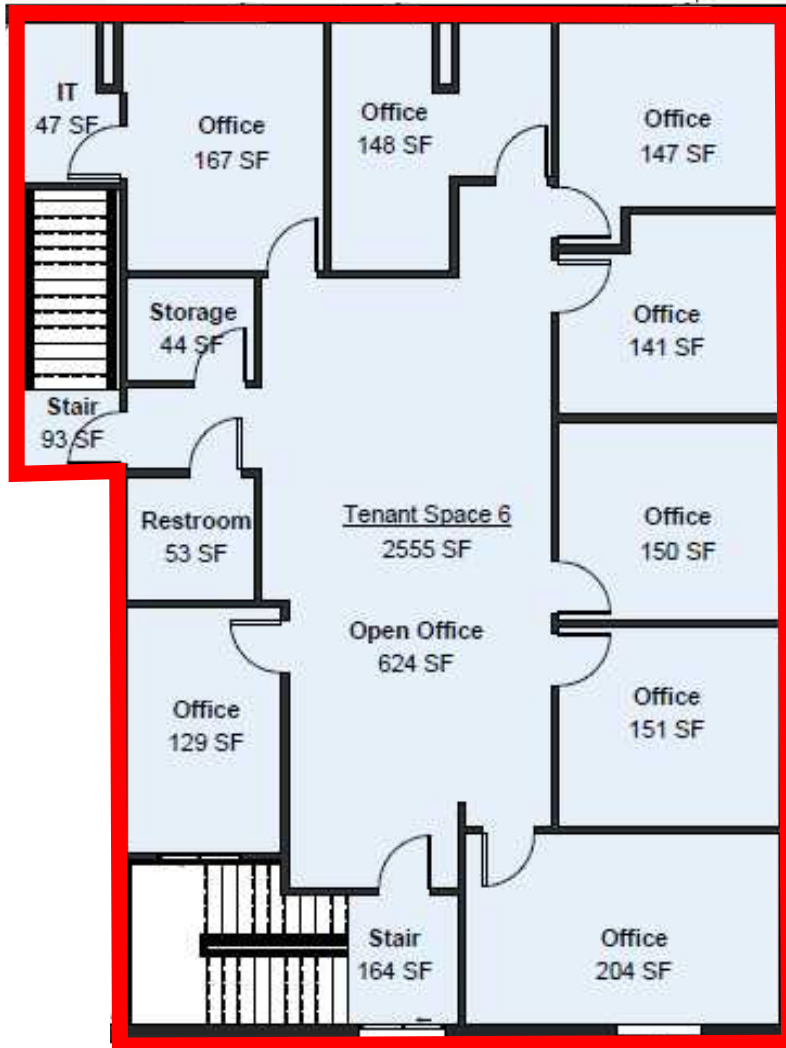
900 Washington St, Suite 850, Vancouver, WA
360.750.5595 | www.fg-cre.com

Building 2 – 2,555 SF

Suite 201

Second Floor Office

\$3,400/ Month Plus NNN



This statement with the information it contains is given with the understanding that all the negotiations relating to the purchase, rental or leasing of the property described above shall be conducted through this office. The above information, while not guaranteed, has been secured from sources we believe to be reliable.