

# FOR LEASE

# PROMINENT CAPITOL HILL BUILDING

1420 BROADWAY | SEATTLE, WA 98122



**CAMERON  
KENT**

206.838.7737  
ckent@ewingandclark.com

**ANDY  
RANDLES**

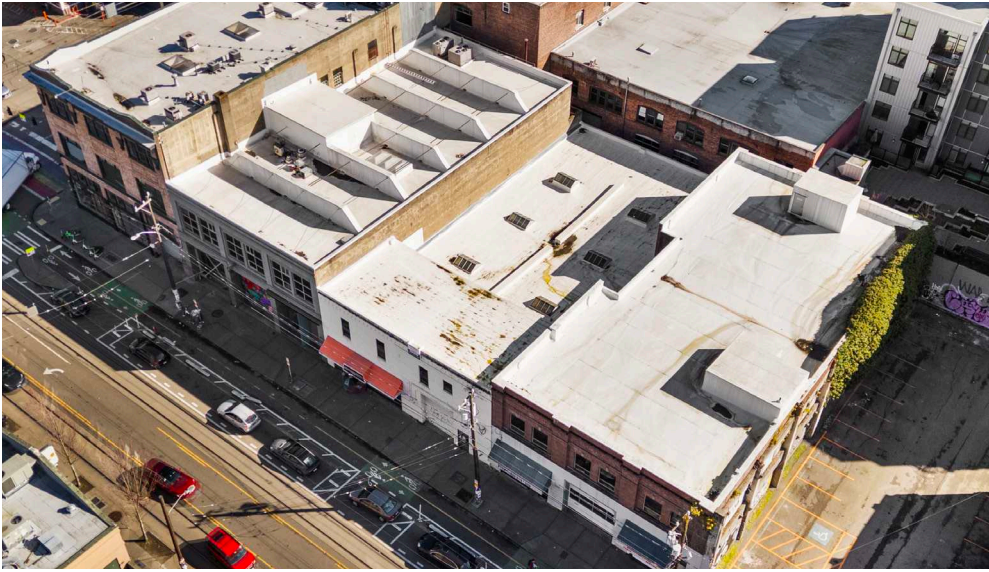
206.405.0090  
andy@ewingandclark.com

**TOM  
GRAFF**

206.295.1445  
tomgraff@ewingandclark.com

# PROPERTY DETAILS

1420 BROADWAY | SEATTLE, 98122

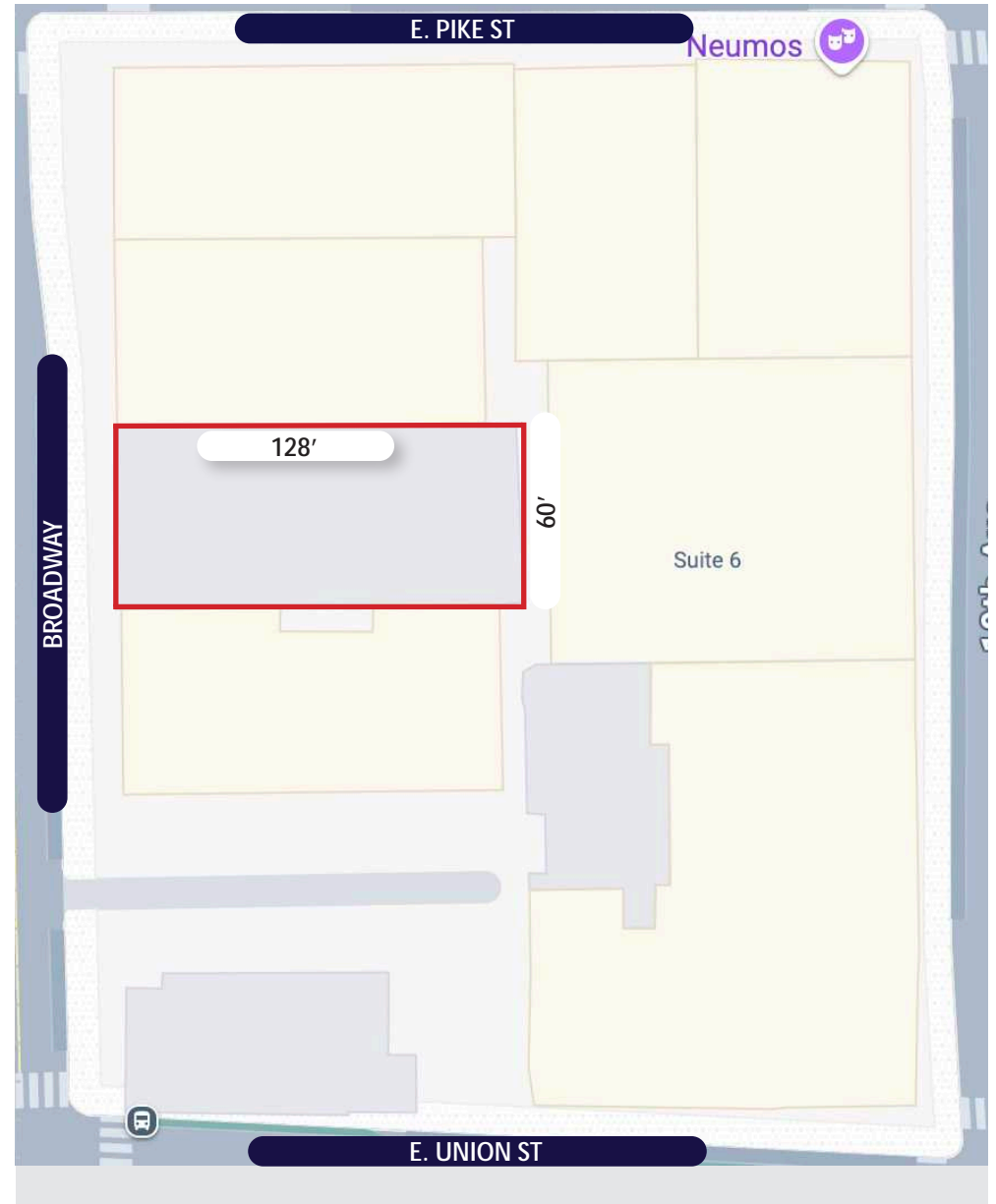


## PROPERTY DETAILS

- Total Building: 10,680 SF
- Sited at the 50-Yard line of Capitol Hill at Broadway and E. Pike.
- Former glass repair shop with workshop and retail entry on the first floor, and large apartment on the 2nd floor (accessible via separate door).
- Main Floor - 7,625 SF
- 2nd Floor only available for full-building tenant

## PRICING

- \$17/SF/YR + NNN (approximately \$4/SF/YR + utilities)



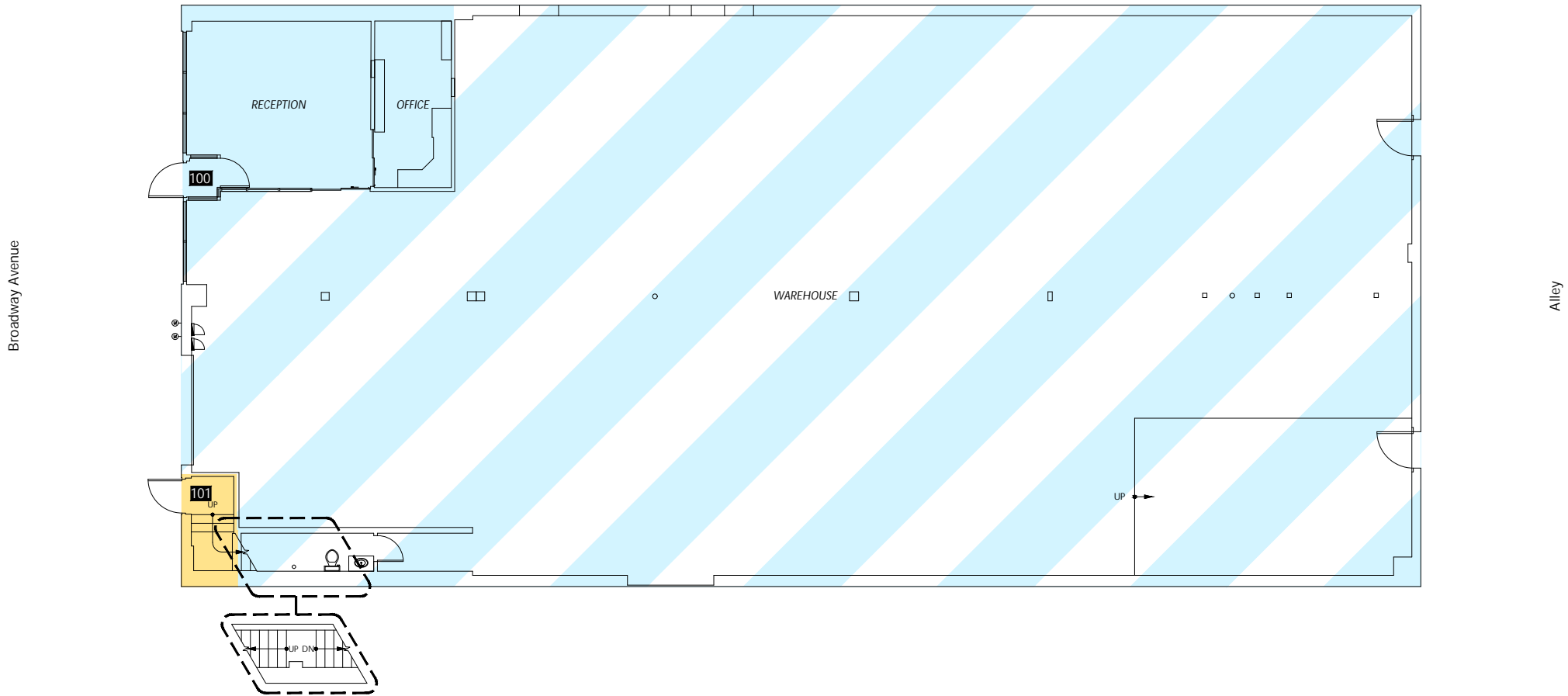
# INTERIOR PHOTOS

1420 BROADWAY | SEATTLE, 98122



# FLOOR PLAN - UNIT A

1420 BROADWAY | SEATTLE, 98122



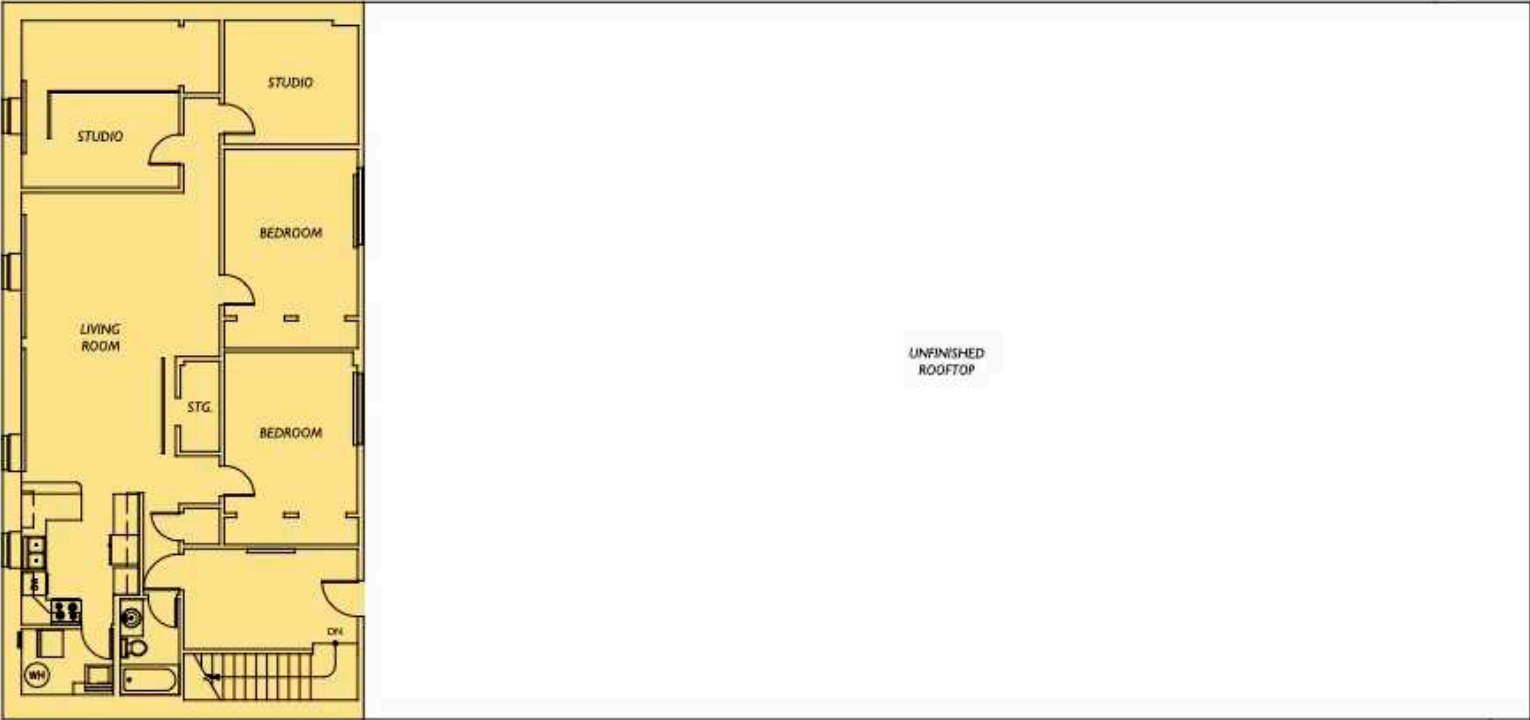
Suite #	Occupant	Area
Suite 100 Office		535.91
Suite 100 Warehouse		7,089.18
Suite 101 Entry		66.25

Adjacent building



# FLOOR PLAN - UNIT B

1420 BROADWAY | SEATTLE, 98122



Suite #	Occupant Area
Suite 101	1,818.51

Adjacent building



# AERIAL MAP

1420 BROADWAY | SEATTLE, 98122

