



THE YUHL
BUILDING

12828 Northup Way, Bellevue, WA 98005



\$24.00/RSF, plus NNN

1,141 RSF Office Space Available July 1, 2026



DAN KREKEL, CCIM
Senior Vice President
(425) 586-4655
dkrekel@leibsohn.com



MAXTON MACLACHLAN
Associate Vice President
(425) 586-4659
mmaclachlan@leibsohn.com

DOWNTOWN BELLEVUE

SPRING DISTRICT

124TH AVE NE

YB THE YUHL BUILDING

NORTHUP WAY

NE 21ST PL

Property Features

- ◆ Unique High-End Tech Building
- ◆ ADA-Accessible
- ◆ Easy Access to SR-520 & I-405
- ◆ On-site Property Management
- ◆ **COMCAST BUSINESS** and **zipty fiber** Available

VIEW POINT PARK

520



DAN KREKEL, CCIM
Senior Vice President
(425) 586-4655
dkrekel@leibsohn.com



MAXTON MACLACHLAN
Associate Vice President
(425) 586-4659
mmaclachlan@leibsohn.com

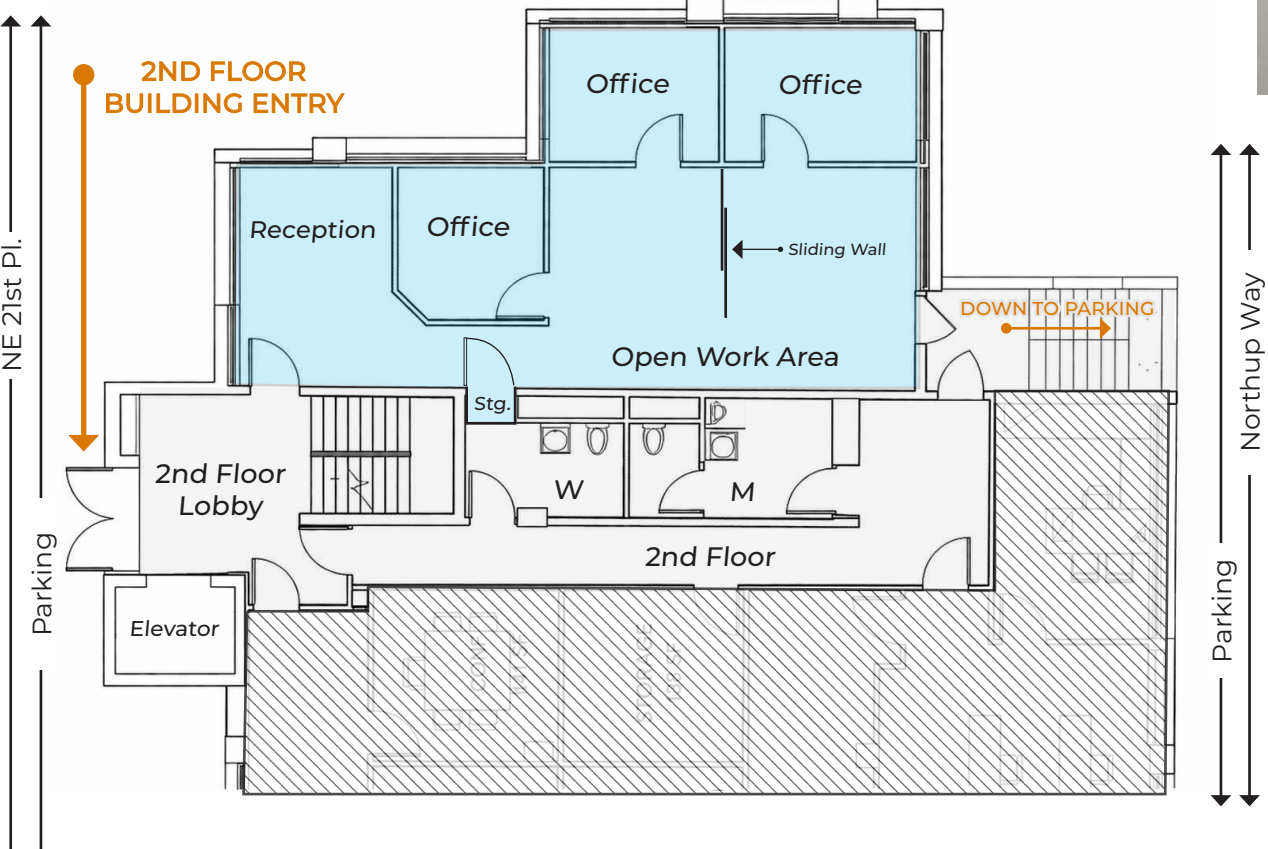
Suite200

1,141 RSF

Base Rent \$2,282.00/mo
NNN Rent \$903.29/mo
Available July 1, 2026



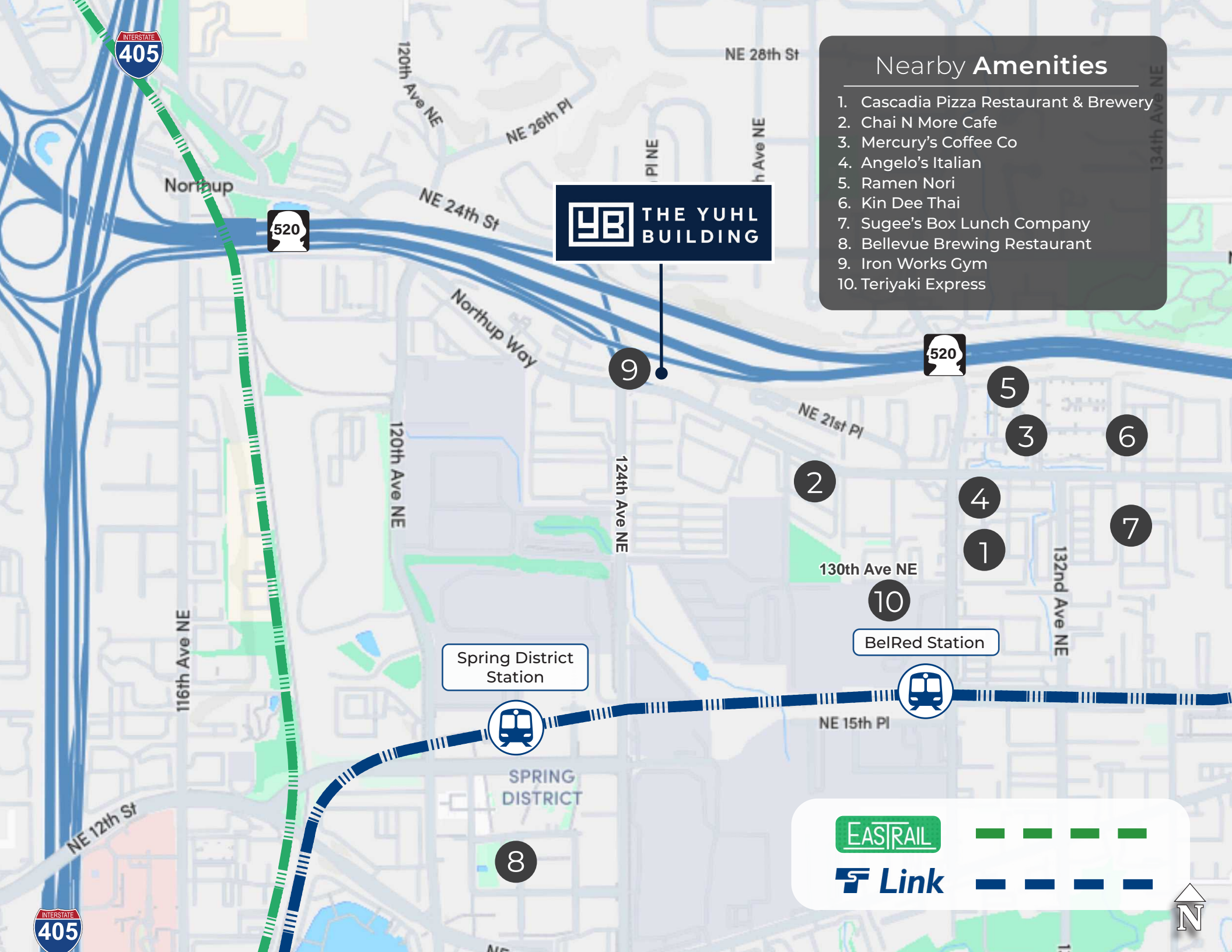
1st Floor Lobby



SuiteFeatures

- ◆ Abundance of Natural Light
- ◆ Recently Remodeled
- ◆ 3 Private Offices
- ◆ Open Work Area
- ◆ Waiting Area





- ### Nearby Amenities
1. Cascadia Pizza Restaurant & Brewery
 2. Chai N More Cafe
 3. Mercury's Coffee Co
 4. Angelo's Italian
 5. Ramen Nori
 6. Kin Dee Thai
 7. Sugee's Box Lunch Company
 8. Bellevue Brewing Restaurant
 9. Iron Works Gym
 10. Teriyaki Express

YB THE YUHL BUILDING

Spring District Station

BelRed Station

EASTRAIL 

Link 





2nd Floor Building Entrance



DAN KREKEL, CCIM
Senior Vice President
(425) 586-4655
dkrekel@leibsohn.com



MAXTON MACLACHLAN
Associate Vice President
(425) 586-4659
mmaclachlan@leibsohn.com



2nd Floor
Building Entry

Suite 200
Entrance

2nd Floor Lobby





Open Work Area



DAN KREKEL, CCIM
Senior Vice President
(425) 586-4655
dkrekel@leibsohn.com



MAXTON MACLACHLAN
Associate Vice President
(425) 586-4659
mmaclachlan@leibsohn.com



Private Office



DAN KREKEL, CCIM
Senior Vice President
(425) 586-4655
dkrekel@leibsohn.com



MAXTON MACLACHLAN
Associate Vice President
(425) 586-4659
mmaclachlan@leibsohn.com



Private Office



DAN KREKEL, CCIM
Senior Vice President
(425) 586-4655
dkrekel@leibsohn.com



MAXTON MACLACHLAN
Associate Vice President
(425) 586-4659
mmaclachlan@leibsohn.com



YB THE YUHL
BUILDING

12828 Northup Way, Bellevue, WA 98005

THE INFORMATION CONTAINED HEREIN HAS BEEN RECEIVED FROM SOURCES WE DEEM RELIABLE. WHILE WE HAVE NO REASON TO DOUBT ITS ACCURACY, WE DO NOT GUARANTEE IT. YOU ARE ADVISED TO INDEPENDENTLY VERIFY ALL INFORMATION. *Leibsohn & Company 2026*



DAN KREKEL, CCIM
Senior Vice President
(425) 586-4655
dkrekel@leibsohn.com



MAXTON MACLACHLAN
Associate Vice President
(425) 586-4659
mmaclachlan@leibsohn.com