



For Lease | 1209-1211 Market St

Kirkland, WA

*Prime Office Suites Available Near
Downtown Kirkland.*

PROPERTY HIGHLIGHTS

- + **Suite 1211:**
 - » 990 SF
 - » Available March 15, 2026
- + **Suite 1209:**
 - » 694 SF
 - » Available April 1, 2026
- + Excellent location on Market Street
- + Walking distance to Downtown Kirkland
- + Lease Rate: \$39.00/SF, Modified Gross

ALEX WHEATLEY

Vice President
+1 425 941 3003
awheatley@nai-psp.com



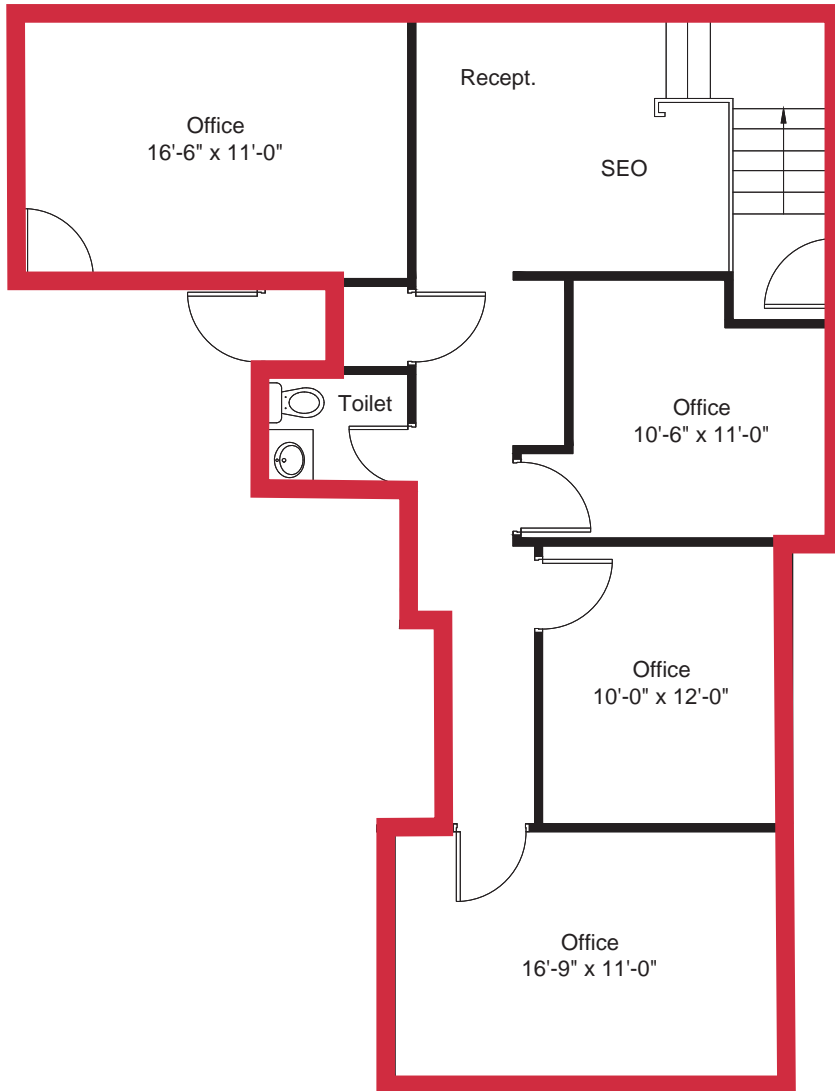
THE INFORMATION CONTAINED HEREIN HAS BEEN GIVEN TO US BY THE OWNER OF THE PROPERTY OR OTHER SOURCES WE DEEM RELIABLE, WE HAVE NO REASON TO DOUBT ITS ACCURACY, BUT WE DO NOT GUARANTEE IT. ALL INFORMATION SHOULD BE VERIFIED PRIOR TO PURCHASE OR LEASE.



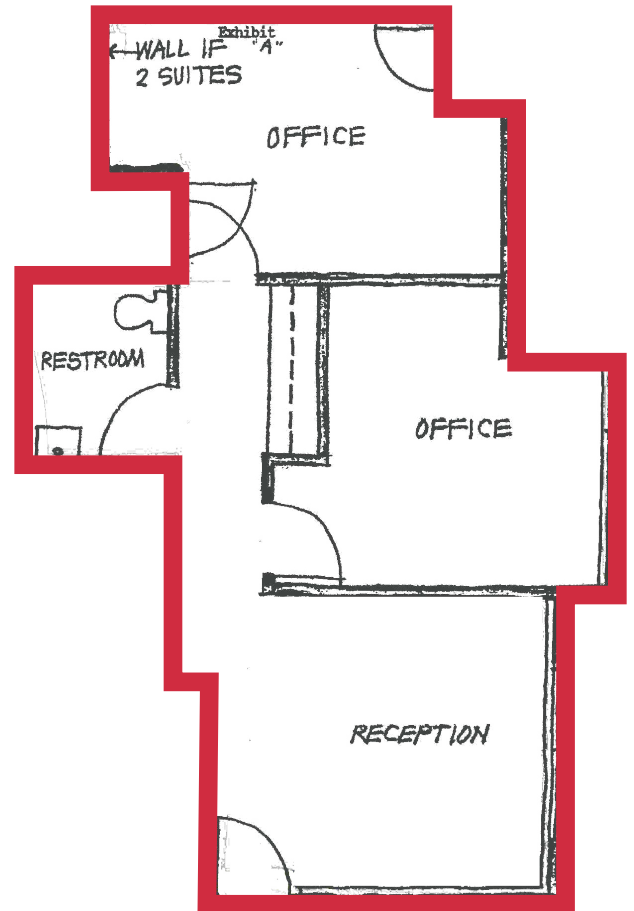
nai-psp.com

Floor Plan

SUITE 1211



SUITE 1209



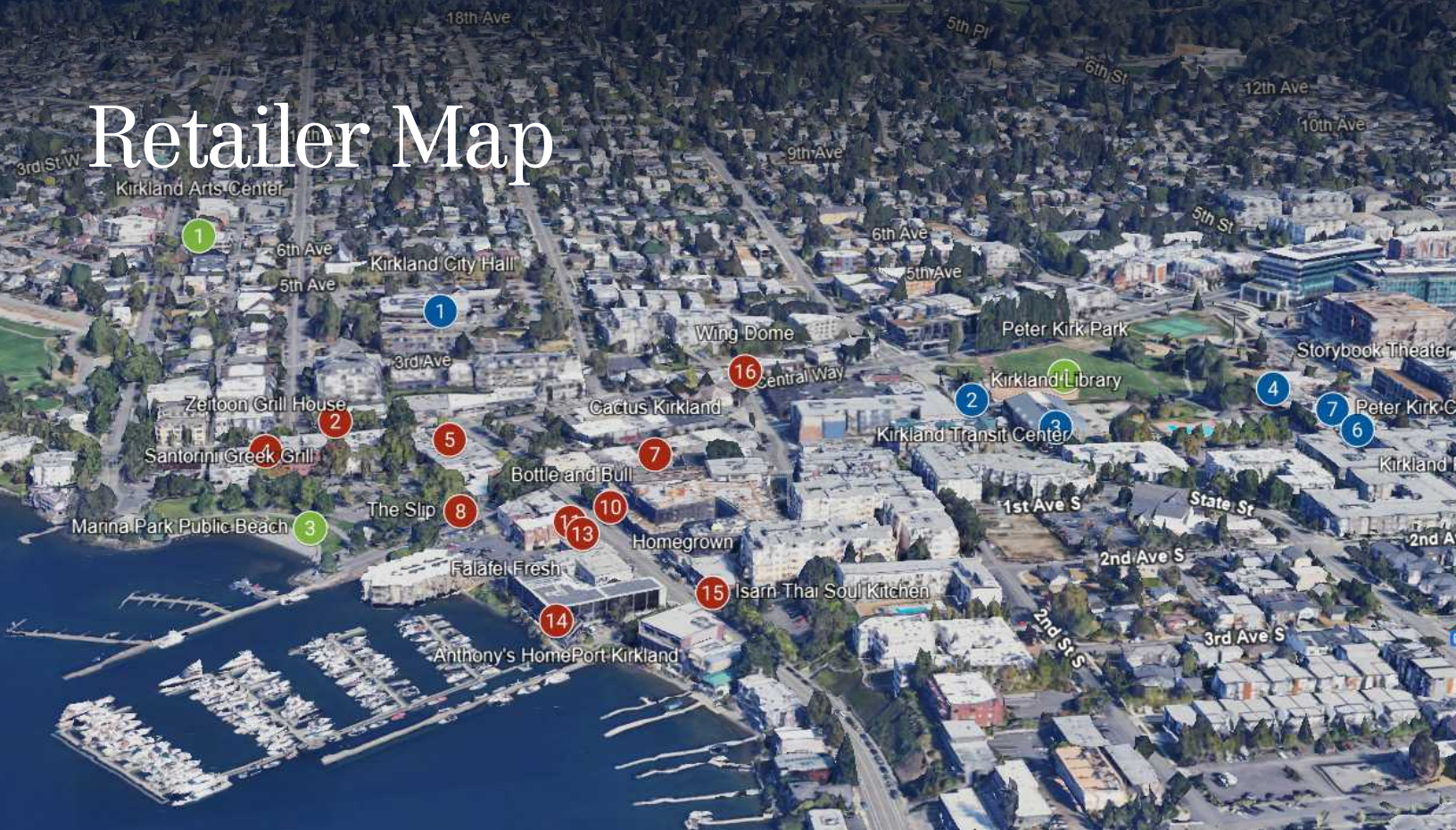
*Office space for lease
near downtown
Kirkland*



ALEX WHEATLEY
Vice President
+1 425 941 3003
awheatley@nai-psp.com



Retailer Map



PUBLIC SERVICES

1. Kirkland City Hall
2. Kirkland Transit Center
3. Kirkland Library
4. Storybook Theater
5. Peter Kirk Pool
6. Kirkland Performance Center
7. Peter Kirk Community Center

PARKS & RECREATION

1. Kirkland Arts Center
2. Heritage Park
3. Marina Park Public Beach
4. Peter Kirk Park

RESTAURANTS

1. Sur La Table
2. Santorini Greek Grill
3. Coastline Burgers
4. Zeitoon Grill House
5. Zoka Coffee Roasters
6. Flatstick Pub
7. Cactus
8. The Slip
9. George's
10. Homegrown
11. Bottle & Bull
12. Juke Poke
13. Falafel Fresh
14. Anthony's HomePort
15. Isarn Thai Soul Kitchen
16. Wing Dome
17. 5 Stones Coffee Co.

95
WALK SCORE

71
BIKE SCORE

49
TRANSIT SCORE

ALEX WHEATLEY

Vice President
+1 425 941 3003
awheatley@nai-psp.com

