

# *Pike's Peak* PLAZA

11980 NE 24TH ST, BELLEVUE, WA



**NEWMARK**

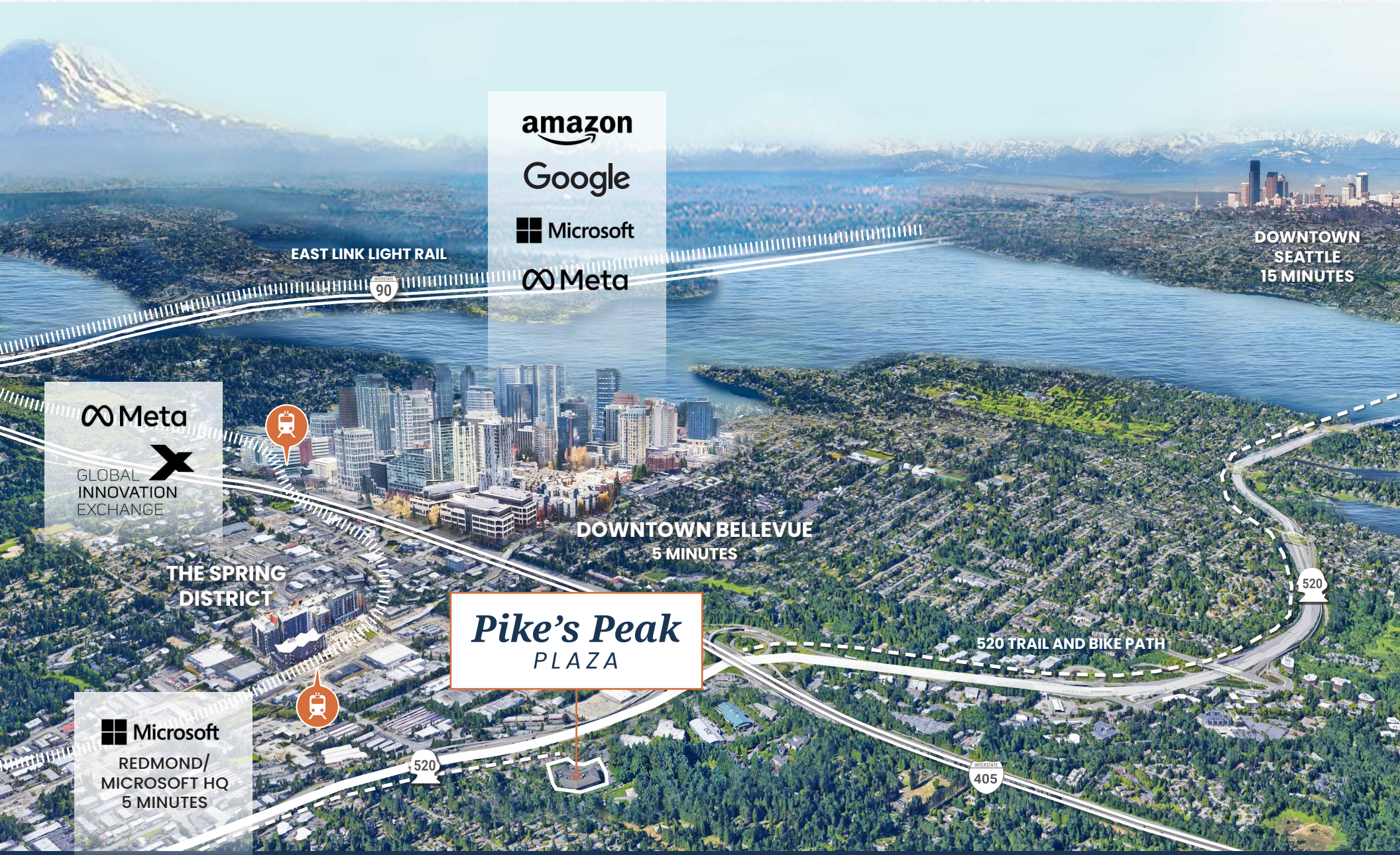
**JOE LYNCH**

Executive Managing Director  
425.362.1399  
joe.lynch@nrmk.com

**DAN HARDEN**

Senior Managing Director  
425.362.1393  
dan.harden@nrmk.com

CENTRAL LOCATION | Commute Times



amazon

Google

Microsoft

Meta

DOWNTOWN SEATTLE  
15 MINUTES

EAST LINK LIGHT RAIL



Meta

GLOBAL INNOVATION EXCHANGE



DOWNTOWN BELLEVUE  
5 MINUTES

THE SPRING DISTRICT

Pike's Peak  
PLAZA

520 TRAIL AND BIKE PATH



Microsoft

REDMOND/  
MICROSOFT HQ  
5 MINUTES



# PROPERTY *Highlights*



## **Prime Transportation Access**

Conveniently located with easy access to SR-520, I-405, and nearby park-and-rides in both Bellevue and South Kirkland.



## **Premium Interior Features**

Experience top-end finishes throughout the property, including a newly renovated available suite and upgraded restrooms for a quality work environment.



## **Breathtaking Views**

Enjoy stunning vistas of downtown Bellevue, the Spring District, and majestic Mt. Rainier from your office space.



## **Ample Parking Options**

With both surface and covered parking available, your commute to work is hassle-free, making this property a practical choice.



## **Local Ownership and Management**

Rest assured with locally owned, occupied, and managed property, ensuring responsive and attentive service for your business needs.



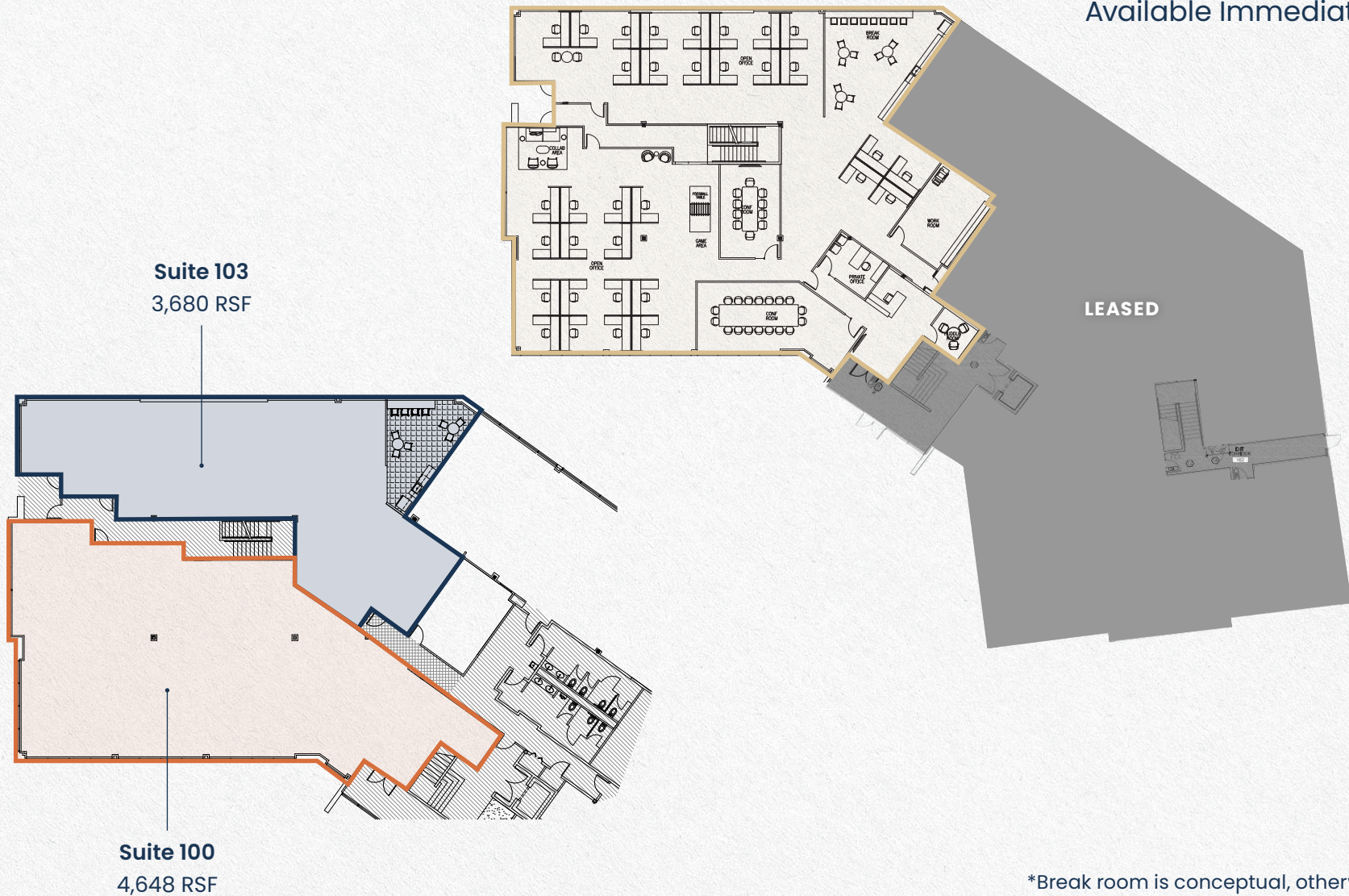
# AVAILABLE SPACE

## Suite 101

8,328 RSF

Divisible to 3,680 - 4,648 RSF

Available Immediately



\*Break room is conceptual, otherwise as built

**MARKET READY WORK COMPLETE**



**MARKET READY WORK COMPLETE**



# *Pike's Peak* PLAZA

---

11980 NE 24TH ST, BELLEVUE, WA

## **JOE LYNCH**

Executive Managing Director  
425.362.1399  
joe.lynch@nmrk.com

## **DAN HARDEN**

Senior Managing Director  
425.362.1393  
dan.harden@nmrk.com

# NEWMARK

The distributor of this communication is performing acts for which a real estate license is required. The information contained herein has been obtained from sources deemed reliable but has not been verified and no guarantee, warranty or representation, either express or implied, is made with respect to such information. Terms of sale or lease and availability are subject to change or withdrawal without notice. 11366275839 04/2026