

# Alderwood Towne Center

3225 Alderwood Mall Boulevard,  
Lynnwood, WA 98036

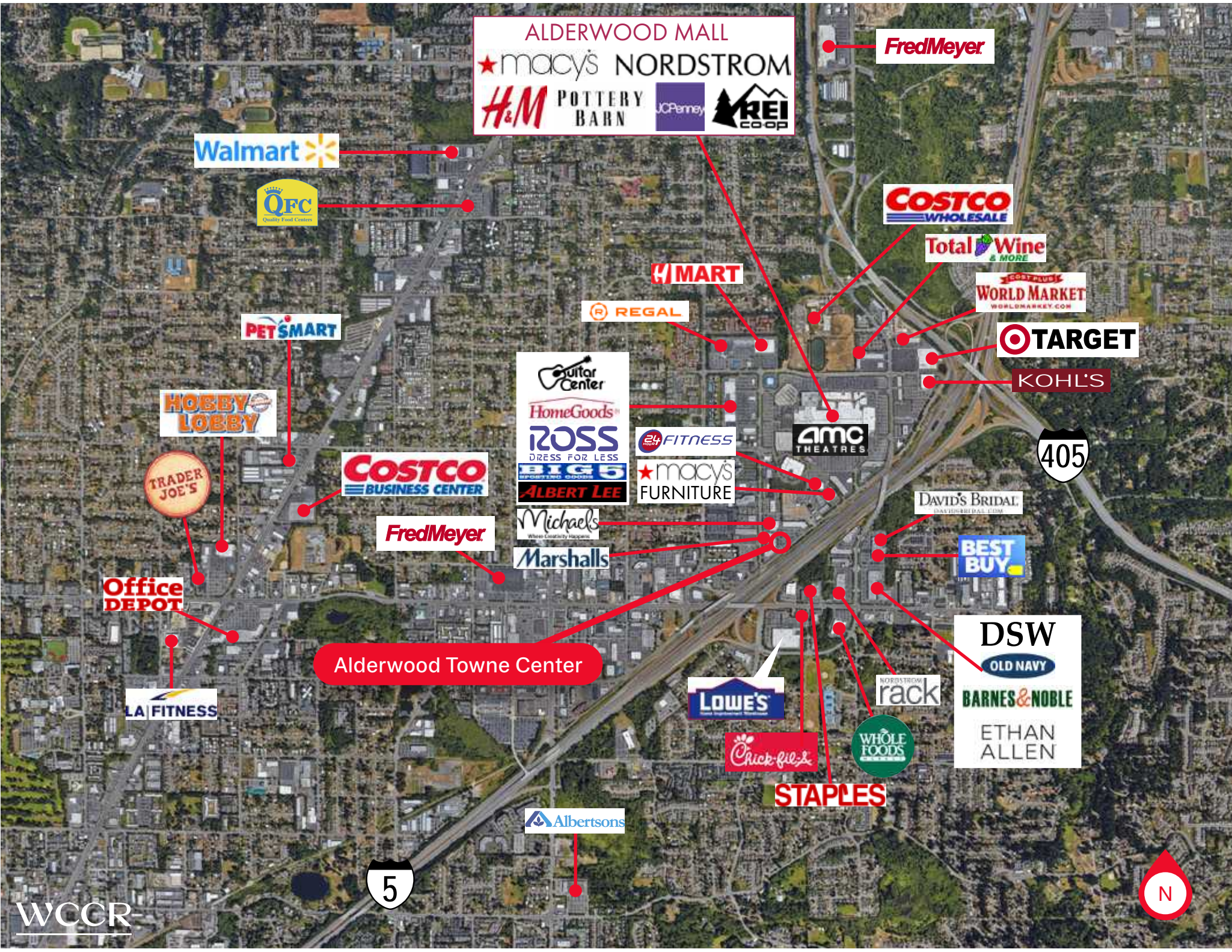


## Prime location in one of Puget Sound's hottest retail markets!

Alderwood Towne Center is located just in front of the Alderwood Mall and boasts I-5 visibility, easy multi-point access and ample parking. Join national retailers Marshalls, Michaels, Precor Home Fitness, Comcast/Xfinity and many more!

Prime trade retail space available NOW!





ALDERWOOD MALL  
★ macy's NORDSTROM  
H&M POTTERY BARN JCPenney REI COOP

Fred Meyer

Walmart

QFC  
Quality Food Centers

COSTCO  
WHOLESALE

Total Wine  
& MORE

H MART

WORLD MARKET  
WORLDMARKET.COM

REGAL

TARGET

PET SMART

KOHL'S

HOBBY LOBBY

Guitar Center  
HomeGoods  
ROSS  
DRESS FOR LESS  
BIG 5  
ALBERT LEE

24 FITNESS

AMC  
THEATRES

405

TRADER JOE'S

COSTCO  
BUSINESS CENTER

macy's  
FURNITURE

DAVID'S BRIDAL  
DAVIDSBRIDAL.COM

Fred Meyer

Michaels  
Where Creativity Happens  
Marshalls

BEST BUY

Office DEPOT

Alderwood Towne Center

DSW  
OLD NAVY  
BARNES & NOBLE  
ETHAN ALLEN

LA FITNESS

LOWE'S

NORDSTROM  
rack

WHOLE FOODS

Chick-fil-e

STAPLES

Albertsons

5

N

WCCR

# Demographics



**POPULATION**  
1-Mile: 13,513  
2-Mile: 58,141  
3-Mile: 139,879  
5-Mile: 335,913



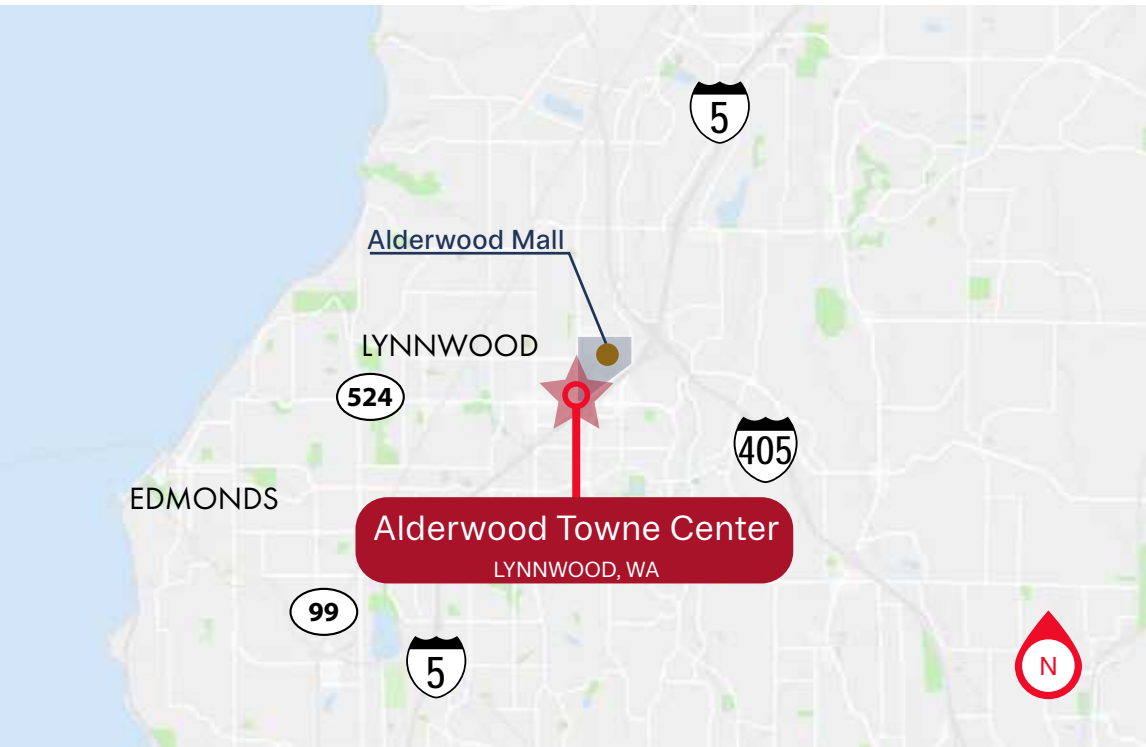
**EMPLOYEES**  
1-Mile: 13,301  
2-Mile: 25,566  
3-Mile: 44,355  
5-Mile: 102,854



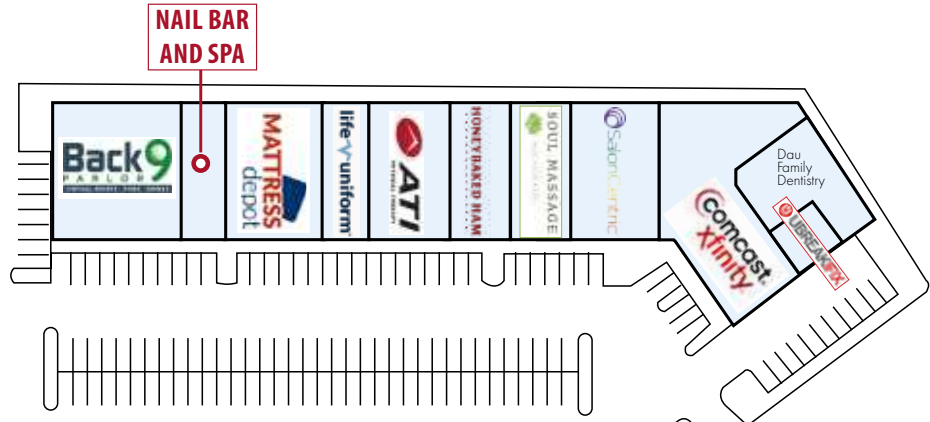
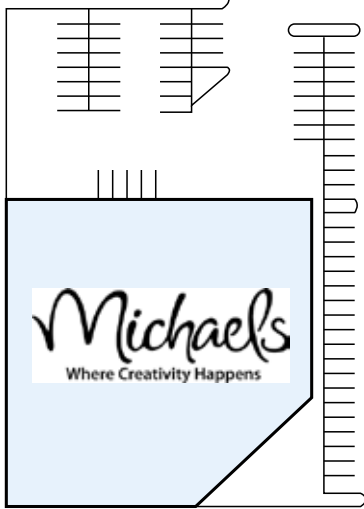
**AVERAGE HOUSEHOLD INCOME**  
1-Mile: \$85,608  
2-Mile: \$89,348  
3-Mile: \$93,669  
5-Mile: \$104,207



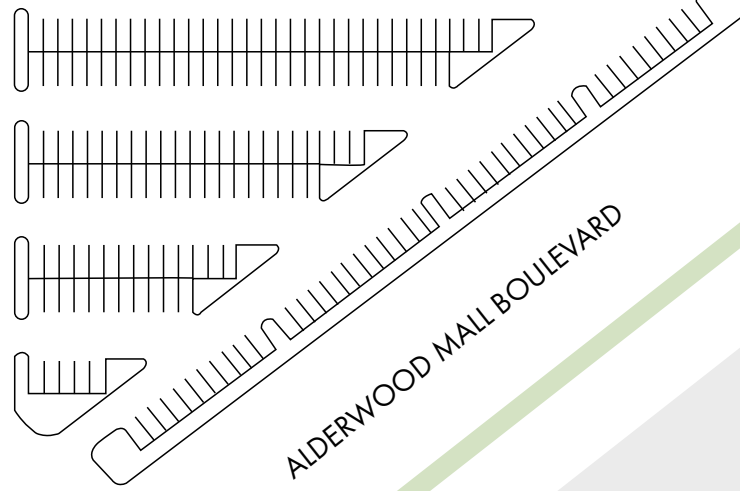
**TRAFFIC COUNTS**  
42,000+ ADV  
at the intersection of 196th St & I-5  
(0.04 miles south of center)  
  
160,000+ ADV  
Interstate-5 (at milepost 181.5)



# SITE PLAN



33RD AVENUE N

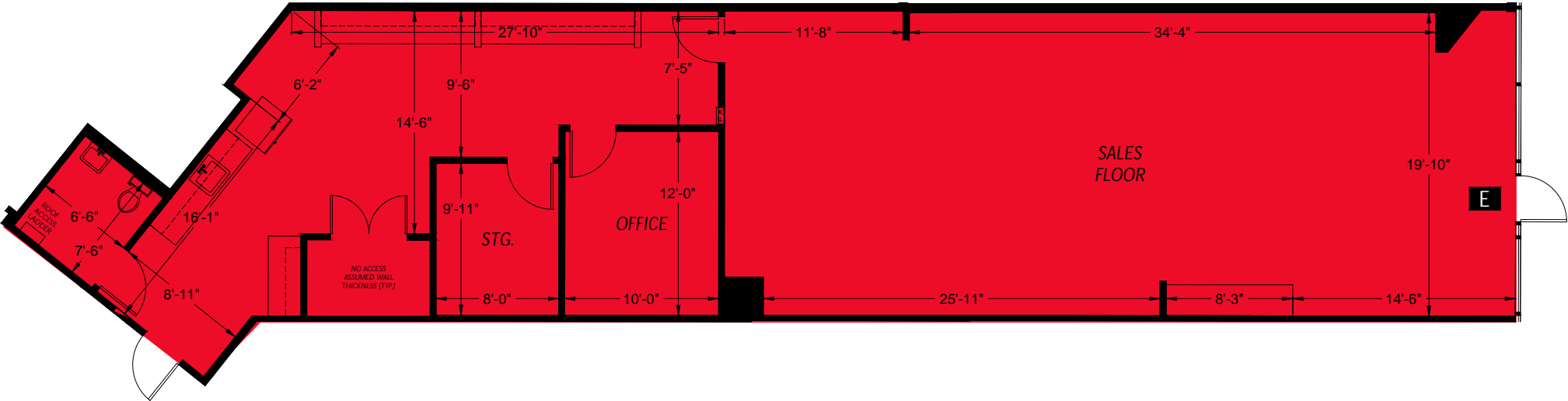


160,000+ VEHICLES PER DAY



# SUITE E - SITE PLAN

2,021 SF Available



# Alderwood Towne Center

3225 Alderwood Mall Boulevard,  
Lynnwood, WA 98036

**Jonathan Willett**

jonathan@wccommercialrealty.com  
206 450 4953

**Tiffini Connell**

tiffini@wccommercialrealty.com  
206.854.1925

DISCLAIMER: The above information has been secured from sources believed to be reliable, however, no representations are made to its accuracy. Prospective tenants or buyers should consult their professional advisors and conduct their own independent investigation. Site plan and configuration are subject to change. Properties are subject to change in price and/or availability without notice. West Coast Commercial Realty, LLC



**WCCR** | West Coast  
Commercial  
Realty

206 283 5212  
[wccommercialrealty.com](http://wccommercialrealty.com)

