

18465 NE 68th Street

Redmond, WA 98052

www.cbre.com/bellevue

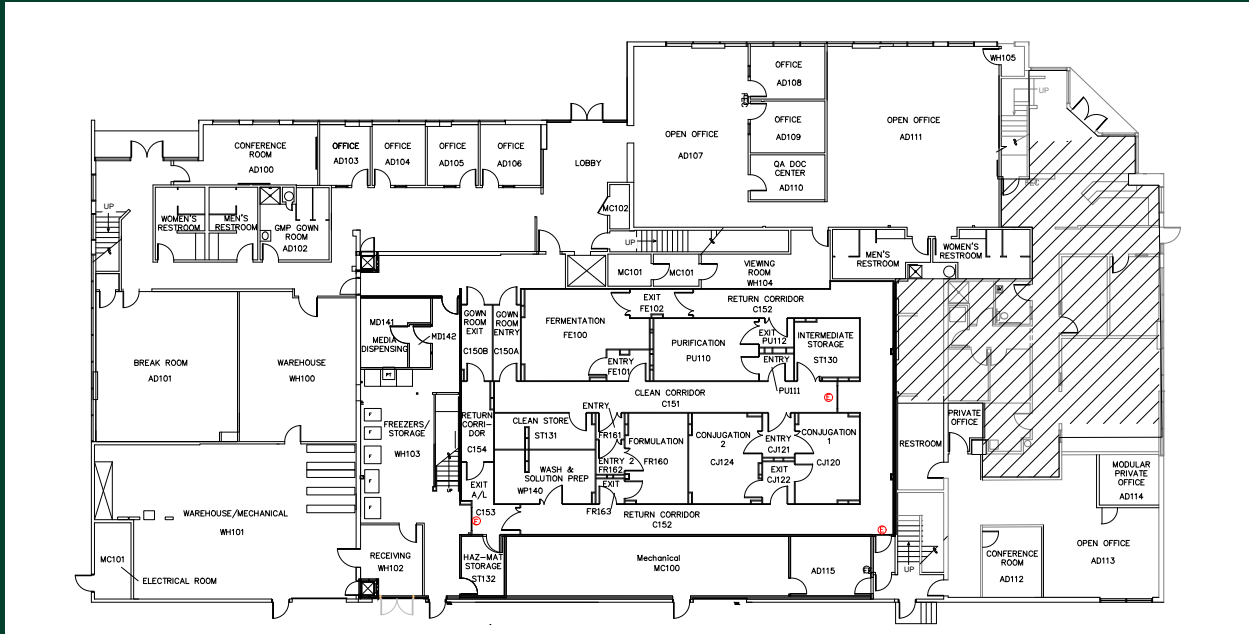


Property Details

Suite 102

- + 28,994 RSF
- + Free surface parking
- + Mix of Lab and Office space between the 1st and 2nd floors
- + Existing clean rooms and advanced life sciences infrastructure
- + Fully conditioned warehouse
- + Minutes from SR 520
- + Amenity rich location
- + Electrical: Approx 460V/3ph/60hz - 800 amps
- + Lease Expiration: December 31, 2028

First Floor Plan



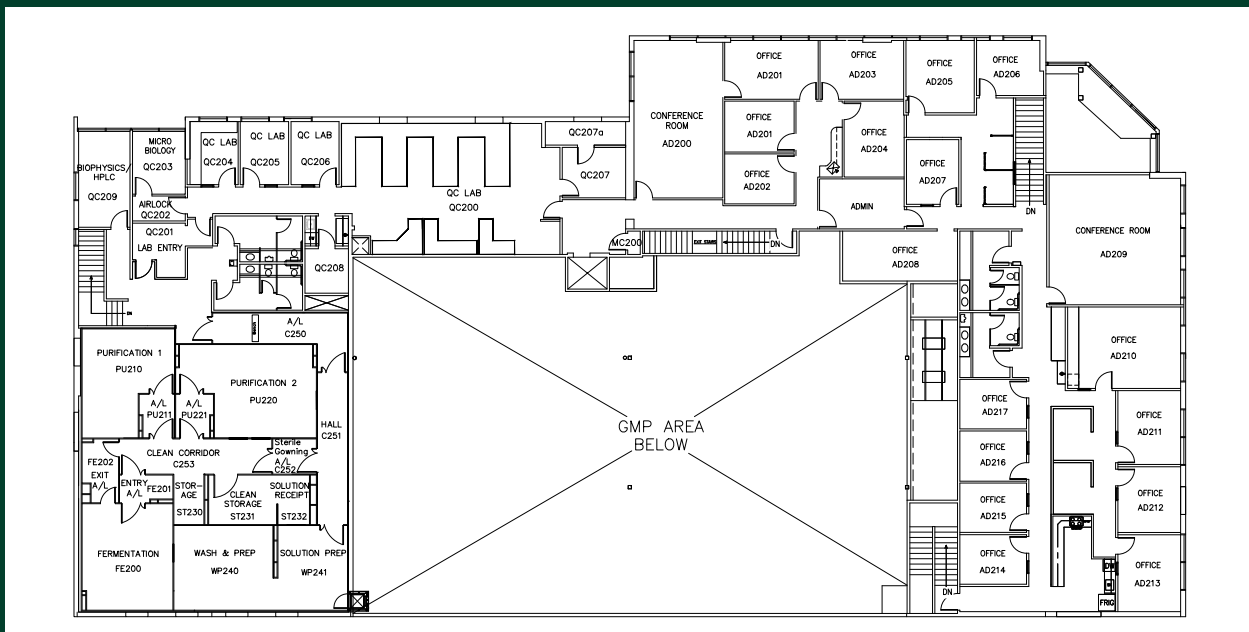
+ General Offices - 8400 sq ft

+ High Bay Warehouse
2500 sq ft

+ Cleanroom w/ Support area
5700 sq ft

+ Roll-up Door

Second Floor Plan

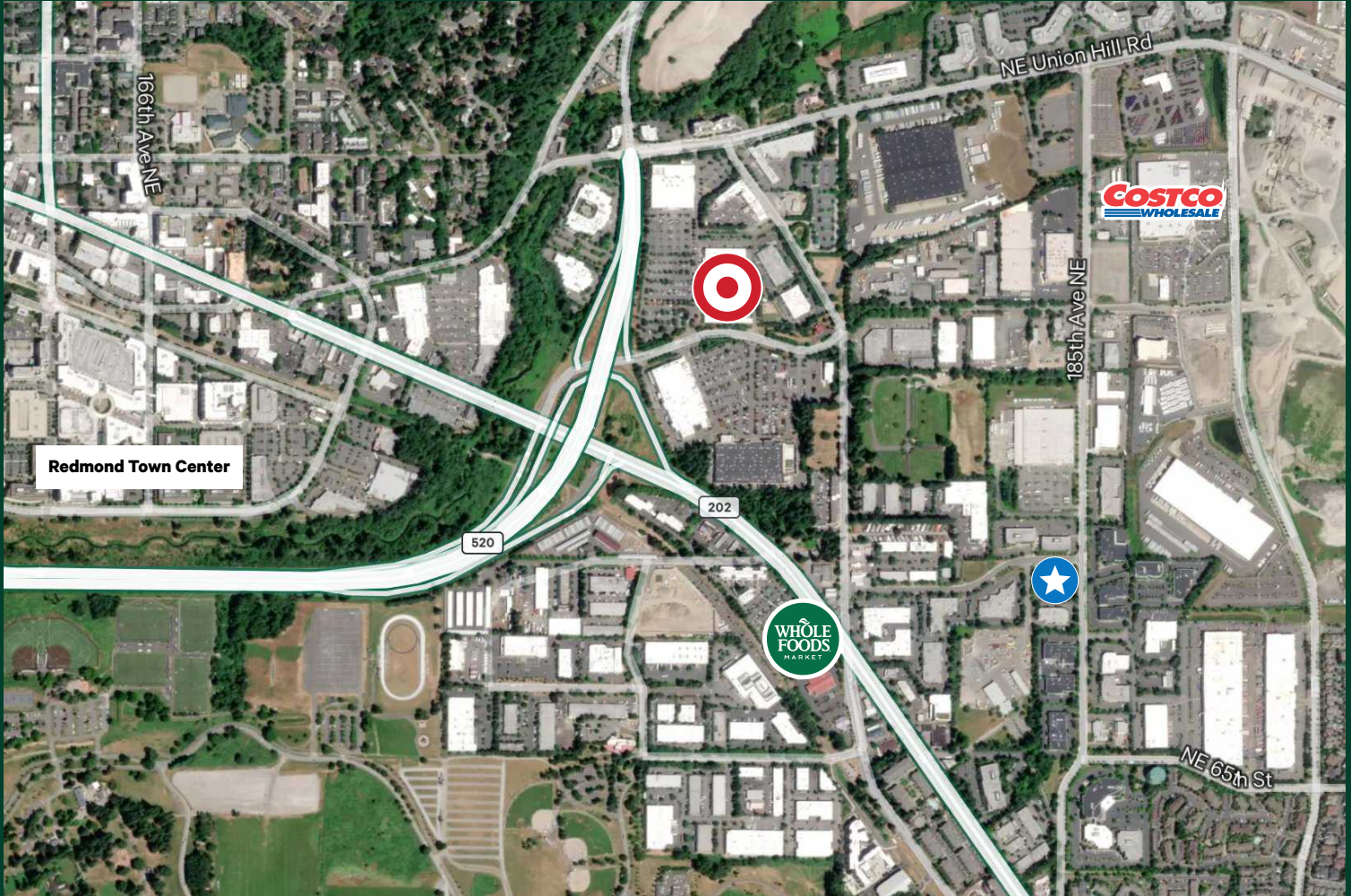


+ General Office - 5600 sq ft

+ Lab area - 2800 sq ft

+ Cleanroom - 2500 sq ft

Area Map



Contact Us

Brian Biege

Executive Vice President
+1 425 462 6914
brian.biege@cbre.com

Bryan Oliver

Senior Vice President
+1 425 749 9903
bryan.oliver@cbre.com

Jacob Hamlin

Vice President
+1 425 319 7252
jacob.hamlin@cbre.com

© 2026 CBRE, Inc. All rights reserved. This information has been obtained from sources believed reliable, but has not been verified for accuracy or completeness. You should conduct a careful, independent investigation of the property and verify all information. Any reliance on this information is solely at your own risk. CBRE and the CBRE logo are service marks of CBRE, Inc. All other marks displayed on this document are the property of their respective owners, and the use of such logos does not imply any affiliation with or endorsement of CBRE. Photos herein are the property of their respective owners. Use of these images without the express written consent of the owner is prohibited. DW_4.21.26