

FOR LEASE

214 21ST ST SE

*2.15 AC IOS with 26,920 SF
Warehouse and Office*

AUBURN, WA 98002

SUBJECT
PROPERTY

214 21ST ST SE



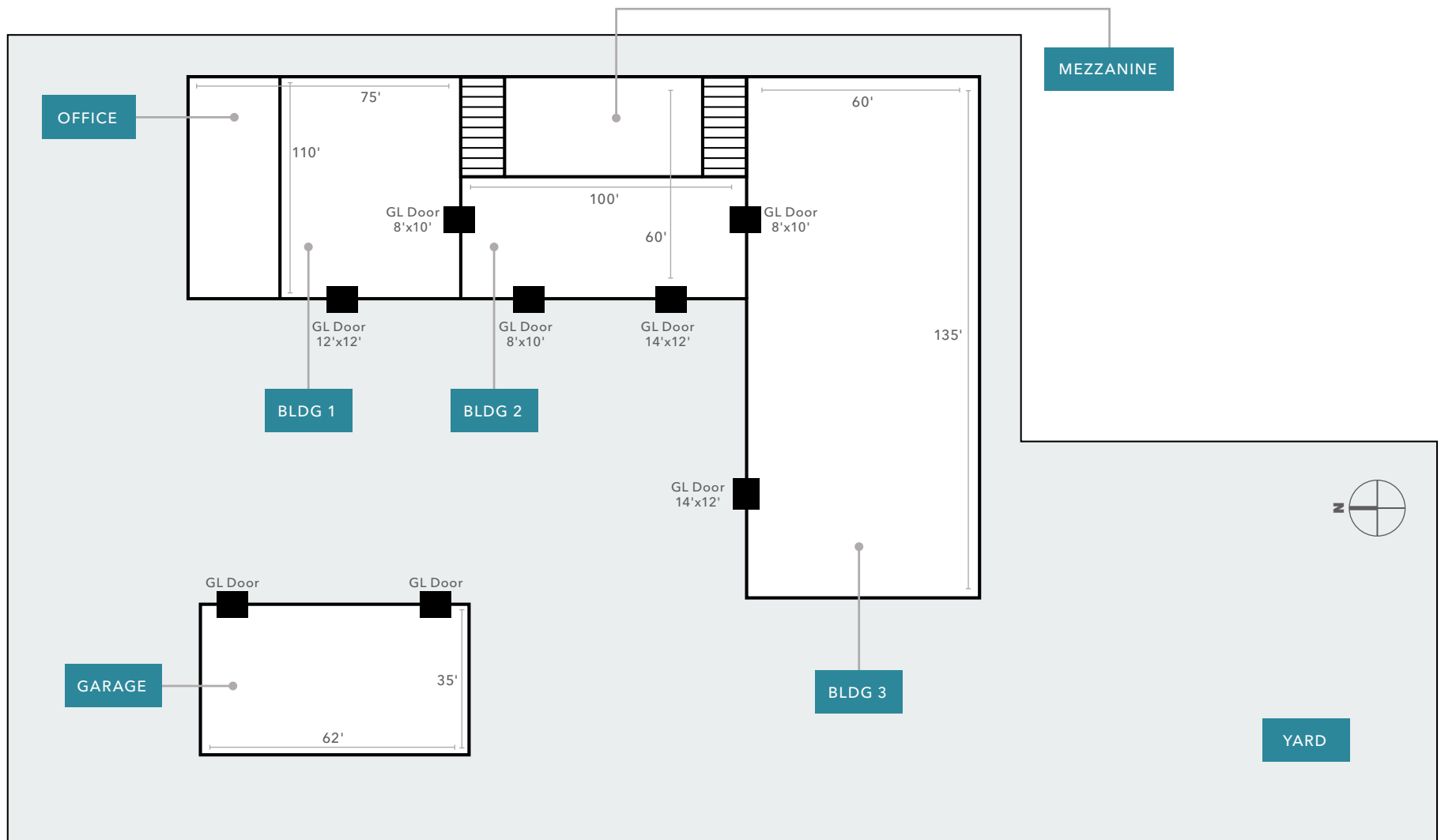
214 21st St SE offers a rare combination of functional industrial buildings and expansive outdoor storage in Auburn's sought-after Kent Valley submarket.

AVAILABLE	January 1, 2027
LAND	2.15 AC (93,685 SF)
BUILDINGS	26,920 RSF (4 buildings)
OFFICE	3,750 SF
MEZZANINE	2,400 SF
YARD	±1 AC
TRUCK ACCESS	6 GL Doors
JURISDICTION	City of Auburn
ZONING	C-2 Heavy Commercial ↓ Download Zoning Map ↓ Download Zoning Table
RATES	Call broker

→ [VIEW PHOTOS](#)

The multi-building campus totals 26,920 SF across three warehouses and a shop with clear heights ranging from 12' to 22', supported by 3,750 SF of dedicated office space and a secured ~1-acre yard – ideal for equipment, materials, vehicles, or containers. Six grade-level doors provide excellent operational flexibility across the site. Located one mile from Hwy-18 with direct access to Hwy-167 and I-5, the property offers immediate connectivity to the greater Puget Sound region.

FLOORPLAN



214 21ST ST SE

BUILDING 1 - WAREHOUSE/OFFICE

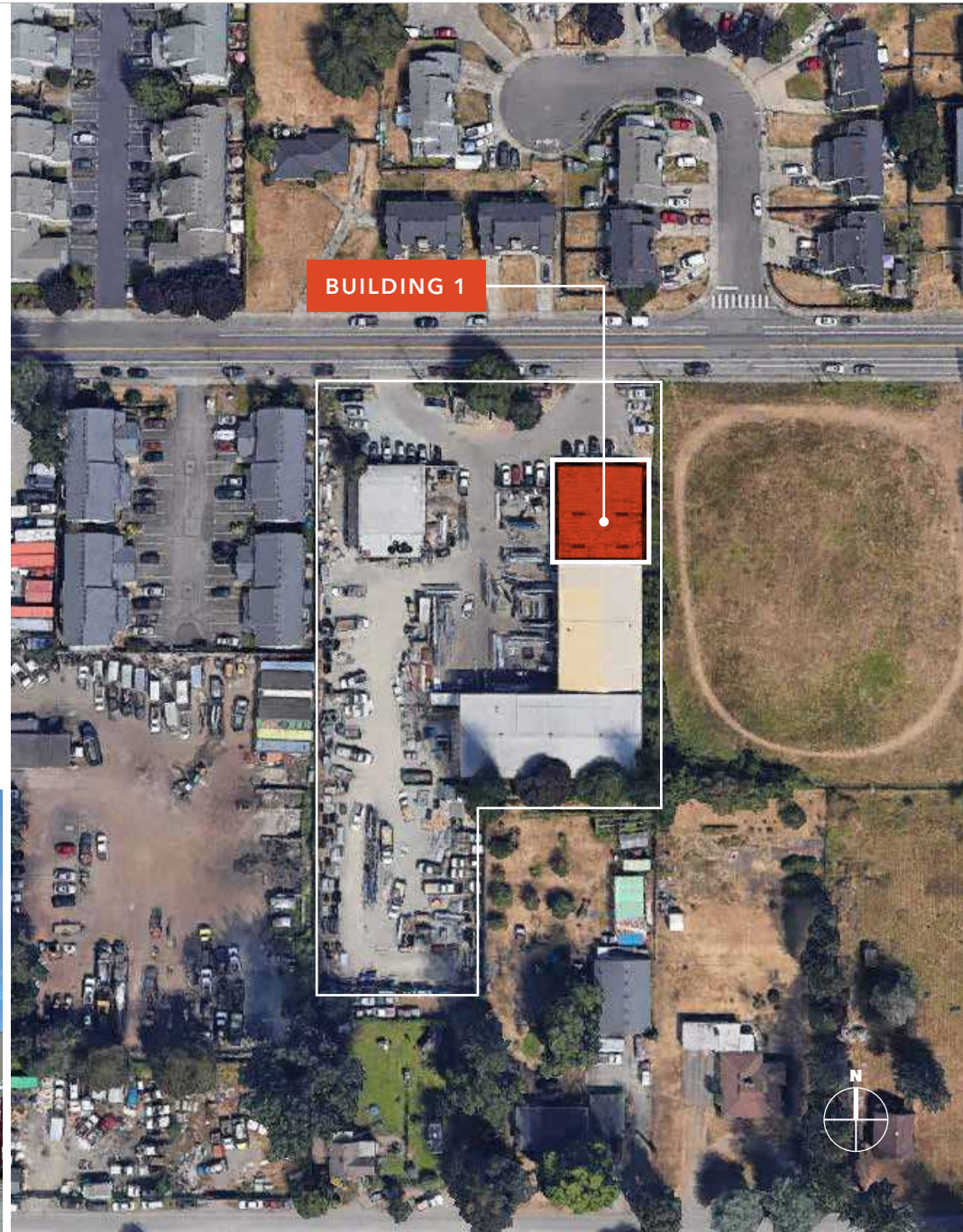
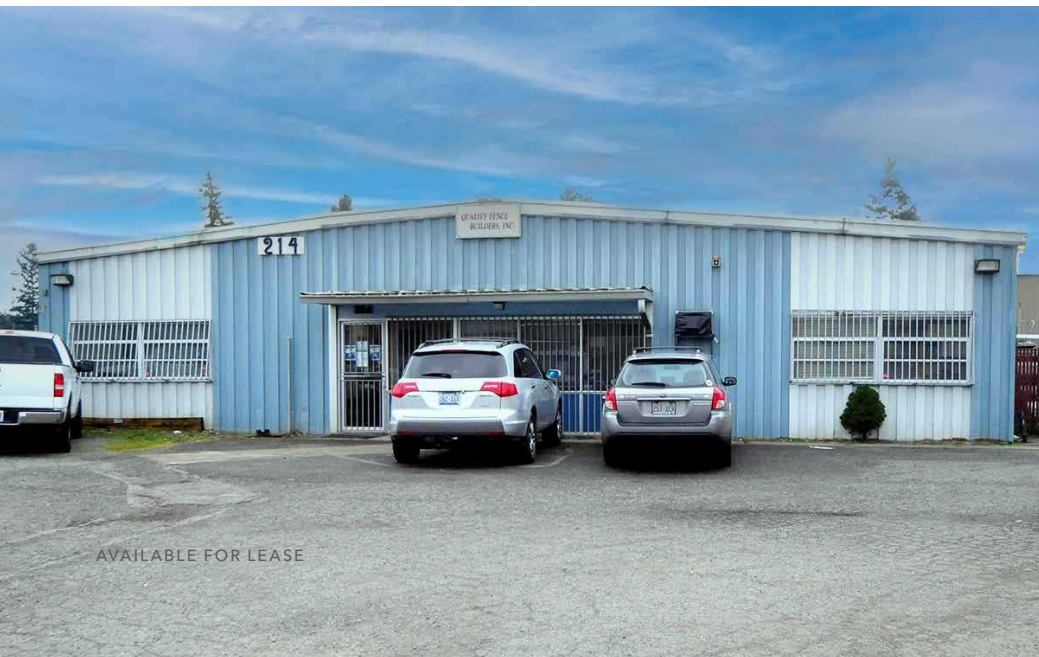
TOTAL SQUARE FEET 8,250

OFFICE SQUARE FEET 2,750

CLEAR HEIGHT 12'

DIMENSIONS 110' x 75'

LOADING 1 grade-level door



AVAILABLE FOR LEASE

KIDDER MATHEWS

214 21ST ST SE

BUILDING 2 - WAREHOUSE WITH MEZZANINE

TOTAL SQUARE FEET 8,400

OFFICE SQUARE FEET 500

MEZZANINE SQUARE FEET 2,400

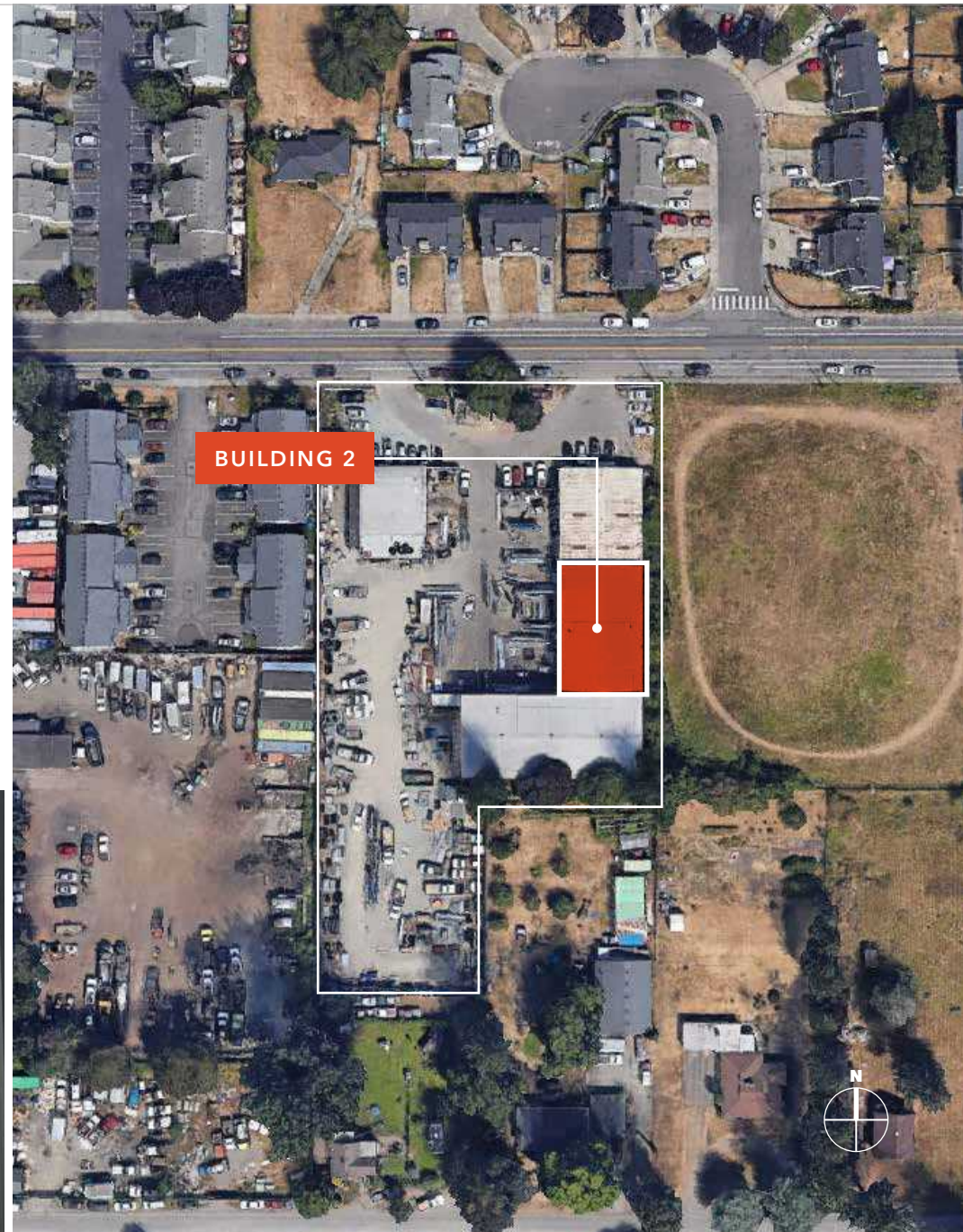
CLEAR HEIGHT 18'

DIMENSIONS 100' x 60'

LOADING 2 grade-level doors



AVAILABLE FOR LEASE



KIDDER MATHEWS

214 21ST ST SE

BUILDING 3 - WAREHOUSE

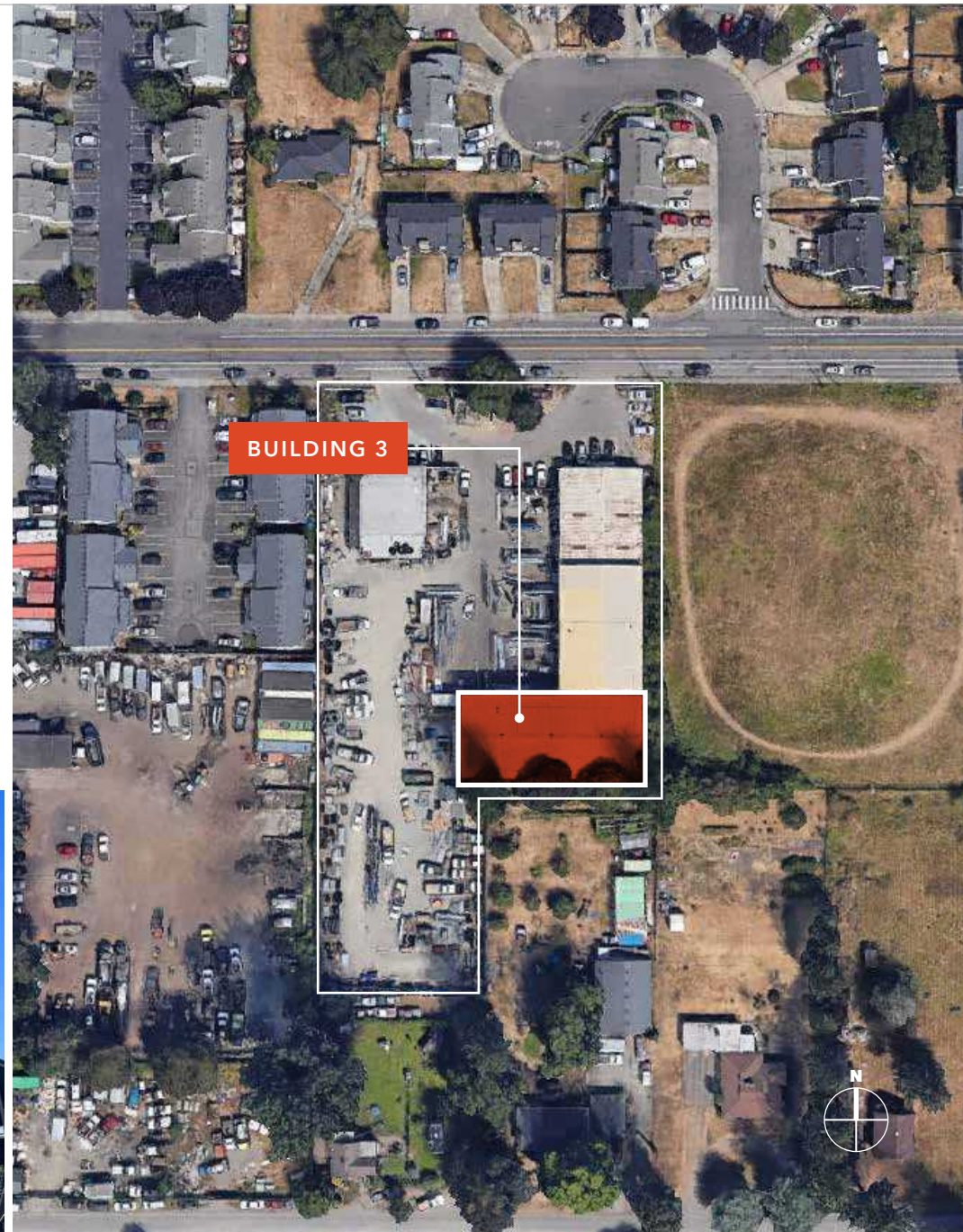
TOTAL SQUARE FEET 8,100

OFFICE SQUARE FEET 500

CLEAR HEIGHT 22'

DIMENSIONS 135' x 60'

LOADING 1 grade-level door



214 21ST ST SE

BUILDING 4 - GARAGE & YARD

TOTAL SQUARE FEET	2,170
OFFICE SQUARE FEET	0
CLEAR HEIGHT	10'
DIMENSIONS	62' x 35'
LOADING	2 grade-level doors



AVAILABLE FOR LEASE

KIDDER MATHEWS

214 21ST ST SE

DRIVE TIME

SR-167 5 MINUTES

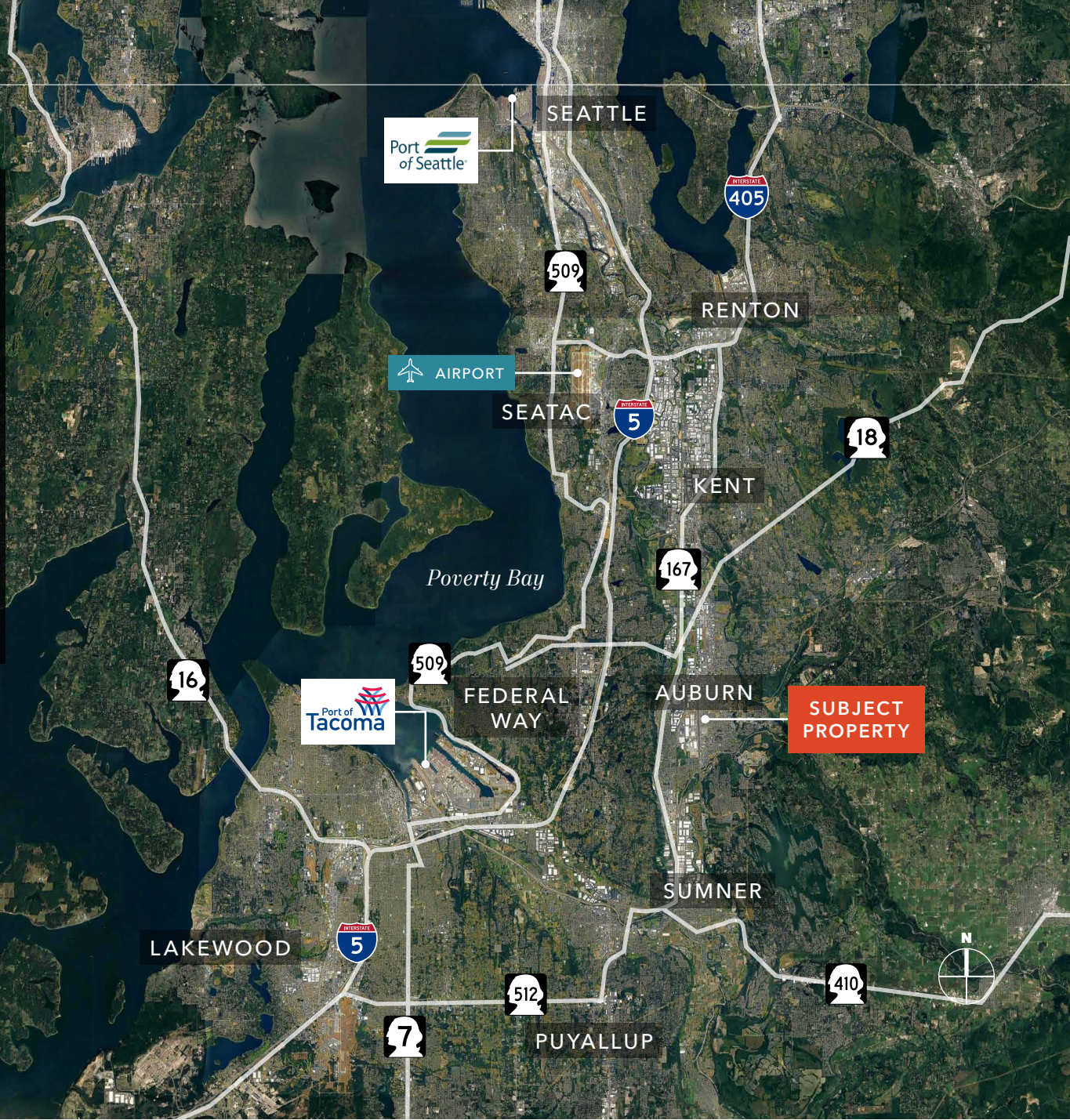
HWY 18 4 MINUTES

I-5 8 MINUTES

PORT OF TACOMA 18 MINUTES

SEATAC AIRPORT 27 MINUTES

PORT OF SEATTLE 42 MINUTES





214 21ST ST SE

*For more information on
this property, please contact*

MATT MCLENNAN, SIOR, CCIM
Executive Vice President, Shareholder
253.722.1458
matt.mclennan@kidd.com

KIDDER.COM

This information supplied herein is from sources we deem reliable. It is provided without any representation, warranty, or guarantee, expressed or implied as to its accuracy. Prospective Buyer or Tenant should conduct an independent investigation and verification of all matters deemed to be material, including, but not limited to, statements of income and expenses. Consult your attorney, accountant, or other professional advisor. All Kidder Mathews designs are the sole property of Kidder Mathews. Branded materials and layouts are not authorized for use by any other firm or person.

