

**FOR LEASE | PACIFIC CENTER**



2747 PACIFIC AVE SE, OLYMPIA, WA 98501

### PROPERTY OVERVIEW

Pacific Center offers a dedicated retail and professional leasing opportunity situated directly within the active Eastside submarket of Olympia, Washington. Comprising three buildings on Thurston County parcel 09840014000, the property features continuous street frontage along the Pacific Avenue Southeast corridor.

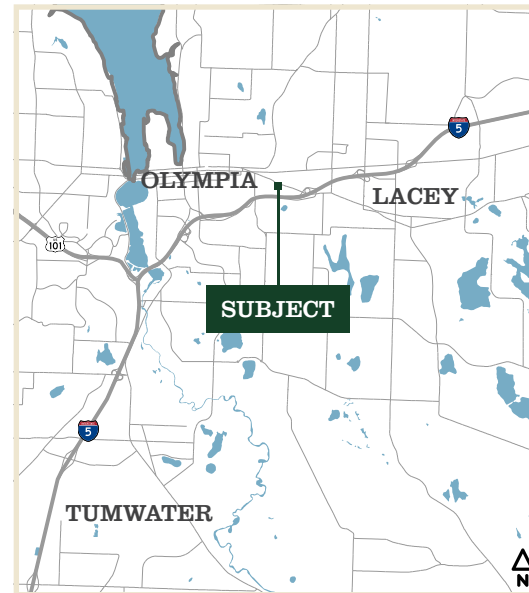
This physical positioning delivers direct visibility to an established traffic volume of 25,000 to 25,772 vehicles each day. To support convenient access for both staff and clientele, the site provides a large surface lot containing approximately 100 parking spaces. Designated with HDC-4 zoning, the property is equipped to accommodate a diverse range of retail, office, and service-oriented commercial operations seeking an accessible presence.

**\$17.50/SF, +NNN (EST \$5.19)**

**ZONING: HDC-4**

**ZONING: HDC-4**

**PARKING: ±100 SURFACE STALLS**



**Spencer Ingram**  
COMMERCIAL BROKER  
360.701.6439  
spenceri@greenecommercial.com

Information provided is from sources deemed reliable but is not guaranteed and is subject to errors, omissions, change of price, or withdrawal without notice. All projections, square footages, and property lines are approximate, provided for illustrative marketing purposes only, and do not constitute a certified appraisal or legal survey (RCW 18.43). Prospective buyers and tenants must independently verify all boundaries, dimensions, and property data with licensed professionals. Greene Commercial assumes no liability for the accuracy of these depictions.



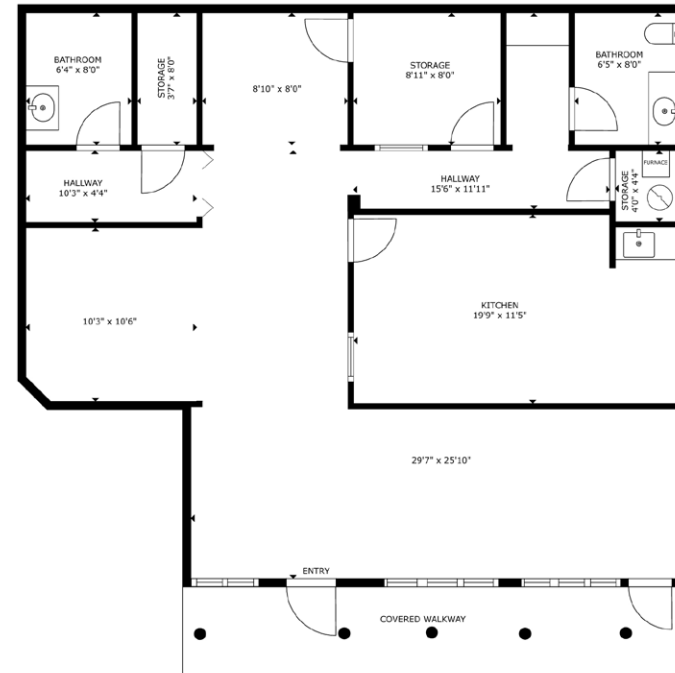
**GREENE**  
COMMERCIAL

**360.528.4167**

[www.greenecommercial.com](http://www.greenecommercial.com)



**BUILDING A - A4/A5 | 1,400 SF**



THIS FLOORPLAN IS NOT TO SCALE  
 SIZES AND DIMENSIONS ARE APPROXIMATE, ACTUAL MAY VARY.

This information, while obtained from sources we deem reliable, is not guaranteed. It is provided without any representation, warranty or guarantee, expressed or implied as to its accuracy. All floorplans, dimensions, and layouts are approximate estimates for illustrative purposes only and do not constitute a certified architectural survey. Prospective buyer or tenant should conduct an independent investigation and verification of all matters deemed to be material, including physical space measurements. Consult your attorney, accountant, or other professional advisor.

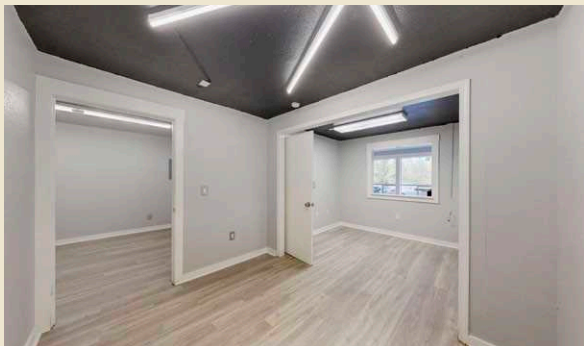
**\$17.50/SF, +NNN (EST \$5.19)**

**CBA # 43589213**

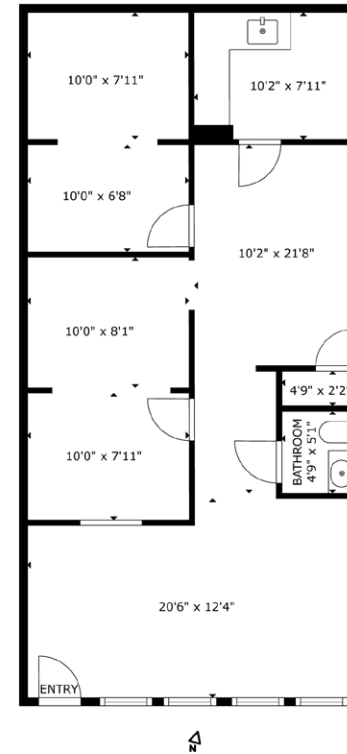
**Spencer Ingrim**  
 COMMERCIAL BROKER  
 360.701.6439  
 spenceri@greenecommercial.com



greene.properties/PacificAveCenterA4A5



**BUILDING B - B16 | 900 SF**



THIS FLOORPLAN IS NOT TO SCALE  
SIZES AND DIMENSIONS ARE APPROXIMATE, ACTUAL MAY VARY.

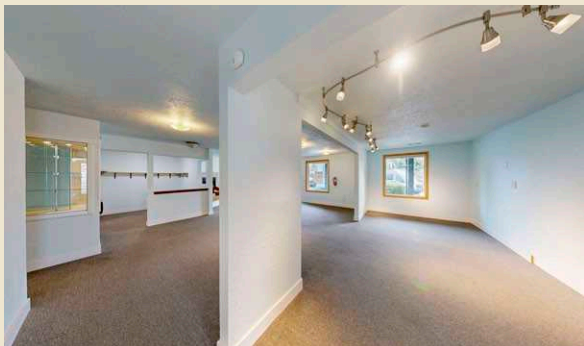
This information, while obtained from sources we deem reliable, is not guaranteed. It is provided without any representation, warranty or guarantee, expressed or implied as to its accuracy. All floorplans, dimensions, and layouts are approximate estimates for illustrative purposes only and do not constitute a certified architectural survey. Prospective buyer or tenant should conduct an independent investigation and verification of all matters deemed to be material, including physical space measurements. Consult your attorney, accountant, or other professional advisor.

**\$17.50/SF, +NNN (EST \$5.19)**

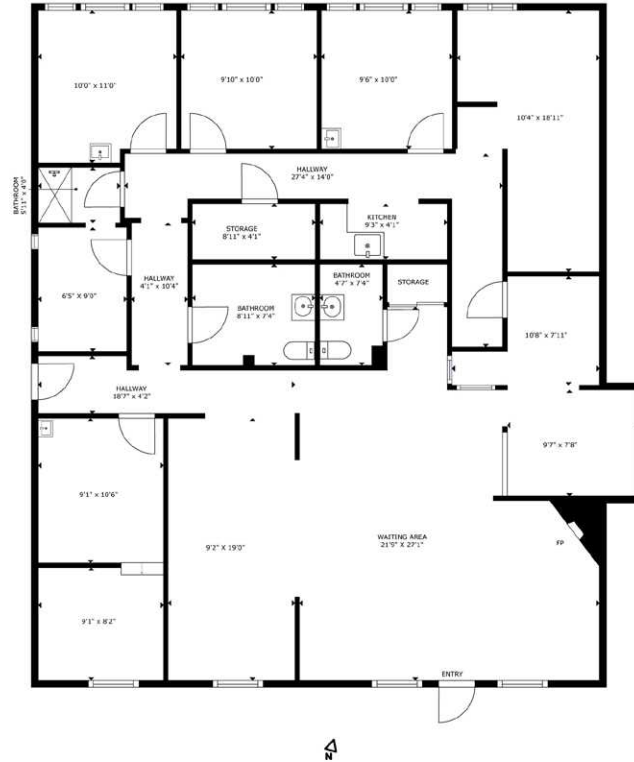
**CBA # 43099767**

**Spencer Ingrim**  
COMMERCIAL BROKER  
360.701.6439  
spenceri@greenecommercial.com

**360°**  
greene.properties/PacificAveCenterB16



**BUILDING B - B23 | 2,000 SF**



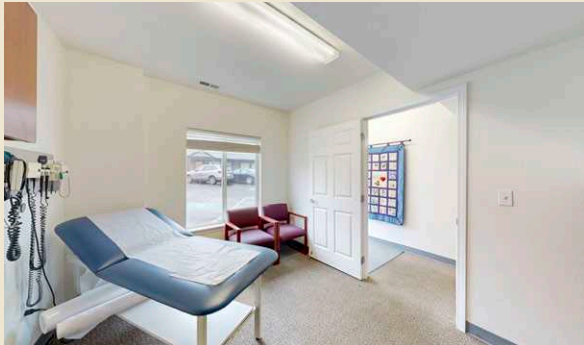
THIS FLOORPLAN IS NOT TO SCALE  
 SIZES AND DIMENSIONS ARE APPROXIMATE, ACTUAL MAY VARY.  
 This information, while obtained from sources we deem reliable, is not guaranteed. It is provided without any representation, warranty or guarantee, expressed or implied as to its accuracy.  
 All floorplans, dimensions, and layouts are approximate estimates for illustrative purposes only and do not constitute a certified architectural survey.  
 Prospective buyer or tenant should conduct an independent investigation and verification of all matters deemed to be material, including all physical space measurements. Consult your attorney, accountant, or other professional advisor.

**\$17.50/SF, +NNN (EST \$5.19)**

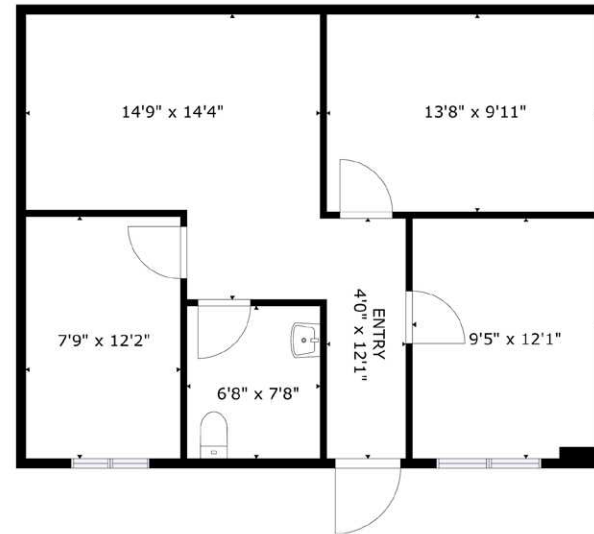
**CBA # 43099583**

**Spencer Ingrim**  
 COMMERCIAL BROKER  
 360.701.6439  
 spenceri@greenecommercial.com

**360°**  
 greene.properties/PacificAveCenterB23



**BUILDING C - C3 | 700 SF**



THIS FLOORPLAN IS NOT TO SCALE  
SIZES AND DIMENSIONS ARE APPROXIMATE, ACTUAL MAY VARY.

This information, while obtained from sources we deem reliable, is not guaranteed. It is provided without any representation, warranty or guarantee, expressed or implied as to its accuracy. All floorplans, dimensions, and layouts are approximate estimates for illustrative purposes only and do not constitute a certified architectural survey. Prospective buyer or tenant should conduct an independent investigation and verification of all matters deemed to be material, including physical space measurements. Consult your attorney, accountant, or other professional advisor.

**\$17.50/SF, +NNN (EST \$5.19)**

**CBA # 44470073**

**Spencer Ingrim**  
COMMERCIAL BROKER  
360.701.6439  
spenceri@greenecommercial.com

**360°**  
greene.properties/PacificAveCenterC3