

# FOR LEASE

Light Industrial/Office  
A great space for local  
contractors

## Fife 2523

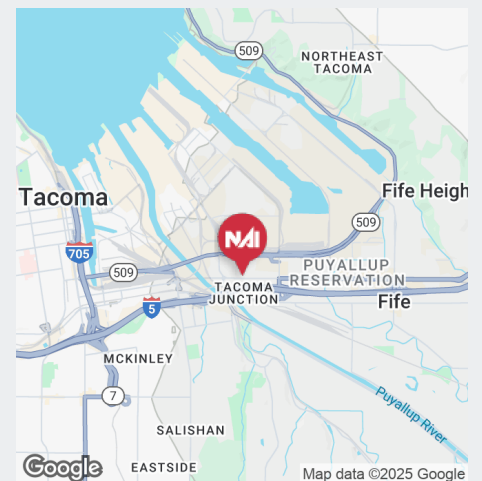
2523 Pacific Highway E, Suite D, Fife, WA 98424

### PROPERTY HIGHLIGHTS

- + 4,213 SF (665 SF office)
- + 16' - 18' clear height
- + 1 oversized grade level door (14'x12')
- + Small side yard, approx. 2,000 SF
- + Great access to I-5, Hwy 99, and Port of Tacoma
- + Sprinklered
- + Industrial Zoning
- + Available Now
- + \$4,845 (\$1.15 PSF) per month, plus NNN



THE INFORMATION CONTAINED HEREIN HAS BEEN GIVEN TO US BY THE OWNER OF THE PROPERTY OR OTHER SOURCES WE DEEM RELIABLE. WE HAVE NO REASON TO DOUBT ITS ACCURACY, BUT WE DO NOT GUARANTEE IT. ALL INFORMATION SHOULD BE VERIFIED PRIOR TO PURCHASE OR LEASE.

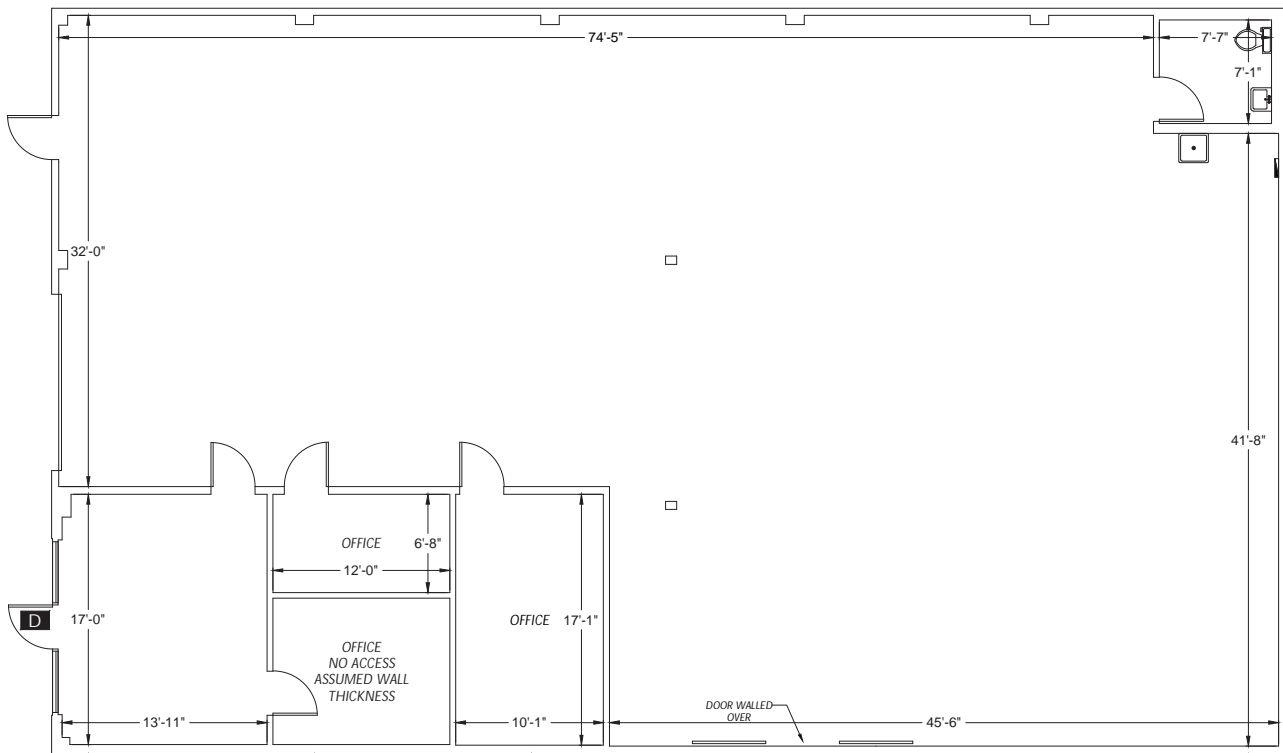


### CONNOR POWELL, SIOR, CCIM

Partner  
+1 425 586 5642  
cpowell@nai-psp.com

### JEFF FORSBERG, CCIM

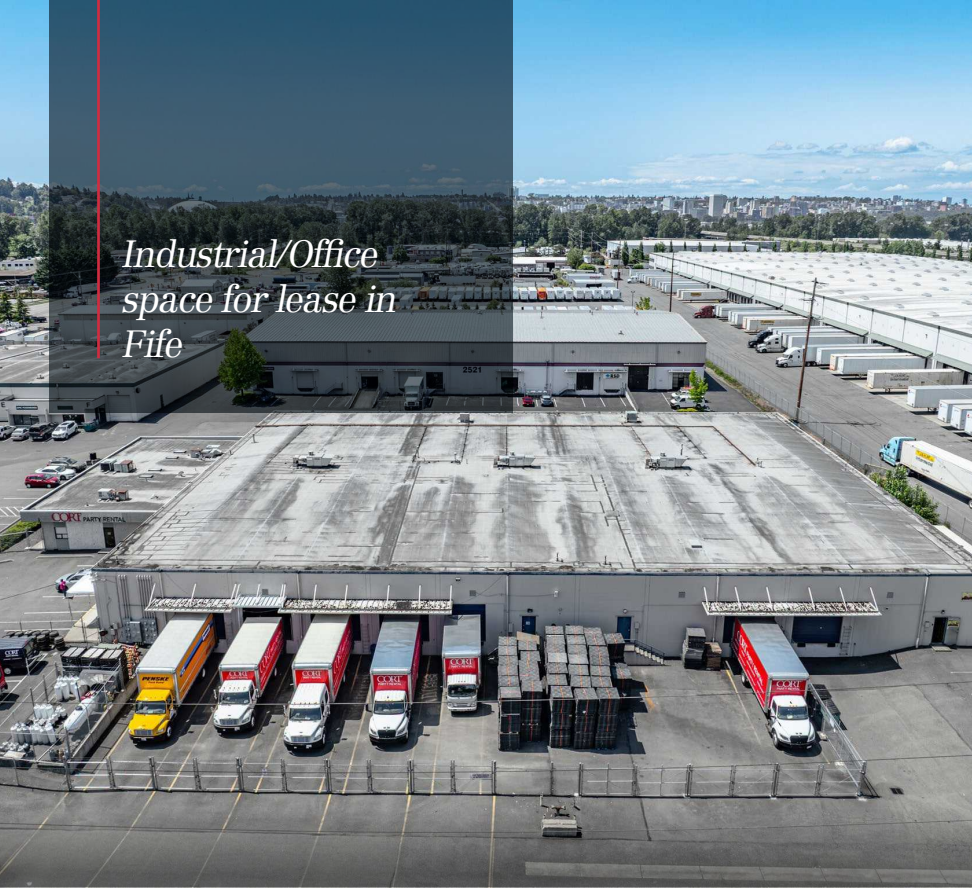
Principal  
+1 425 586 5610  
jforsberg@nai-psp.com



**CONNOR POWELL, SIOR, CCIM**  
 Partner  
 +1 425 586 5642  
 cpowell@nai-pp.com

**JEFF FORSBERG, CCIM**  
 Principal  
 +1 425 586 5610  
 jforsberg@nai-pp.com





*Industrial/Office  
space for lease in  
Fife*



**CONNOR POWELL, SIOR, CCIM**  
Partner  
+1 425 586 5642  
cpowell@nai-pp.com

**JEFF FORSBERG, CCIM**  
Principal  
+1 425 586 5610  
jforsberg@nai-pp.com

