



**FOR
LEASE**

Seattle South Business Park, Bldg 5

18271 Andover Park W | Tukwila, WA



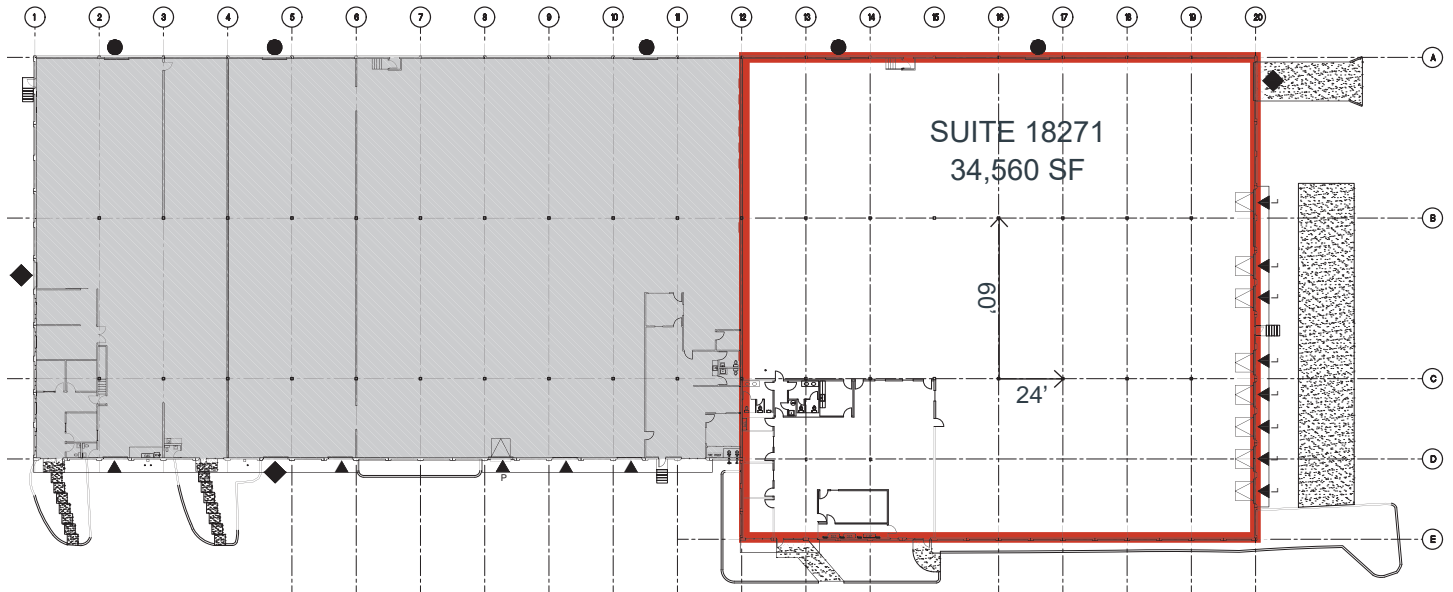
34,560 Square Feet Available

- 4,138 SF office
- 9 dock high doors – 8 with EOD levelers
- 1 drive in door
- 24' clear height
- 800 amps
- Sprinkler: Wet system
- LED lighting
- Truck court: 84'; gated
- Column spacing: 24' x 60'
- Space dimensions: 192'w x 180'l
- Available December 1, 2026

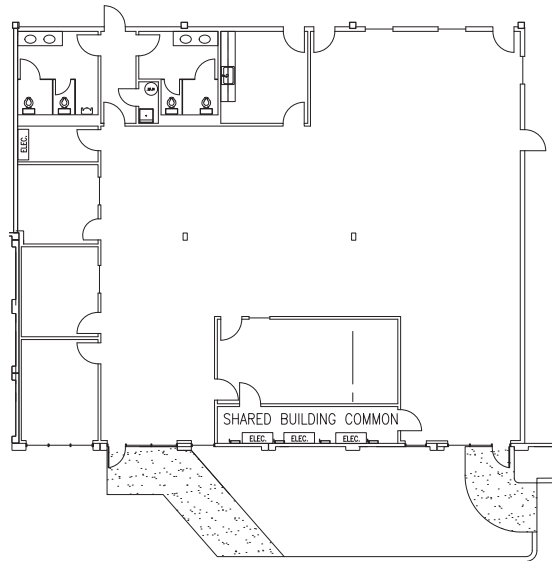
Seattle South Business Park, Building 5

18271 Andover Park W | Tukwila, WA

Floor Plan



Office Plan



LEGEND:

- ▲ DOCK HIGH DOOR
- ▲ DOCK HIGH DOOR W/ EDGE OF DOCK LEVELER
- ◆ DRIVE-IN DOOR
- RAIL DOOR



For more information on this opportunity, please contact



Matt McGregor, SIOR
+1 206 624 7401
matt.mcgregor@colliers.com

Bill Condon, SIOR
+1 206 235 9732
bill.condon@colliers.com

This information contained herein was obtained from sources deemed reliable and is believed to be true. It has not been verified and as such, cannot be warranted nor form any part of any future contract.