



MODERN OFFICE SPACE WITH WATERFRONT VIEWS



**SMYTH
LANDING**



1801 WEST BAY DRIVE, SUITE 101B, OLYMPIA, WA | SMYTH LANDING

Professional office suite available at Smyth Landing, just five minutes from downtown Olympia. This ground-floor, single-room office features a modern layout with views of Budd Inlet and convenient access to the lobby and exterior. Tenants benefit from well-appointed common areas in a scenic waterfront setting, with easy access to nearby restaurants and amenities—an ideal location to establish or grow your business.

SUITE 101B: ±589 SF

\$26.95 PSF, FULL SERVICE

CBA # 44724481



This information, while obtained from sources we deem reliable, is not guaranteed. It is provided without any representation, warranty or guarantee, expressed or implied as to its accuracy. Prospective buyer or tenant should conduct an independent investigation and verification of all matters deemed to be material, including, but not limited to, statements of income and expenses. Consult your attorney, accountant, or other professional advisor.

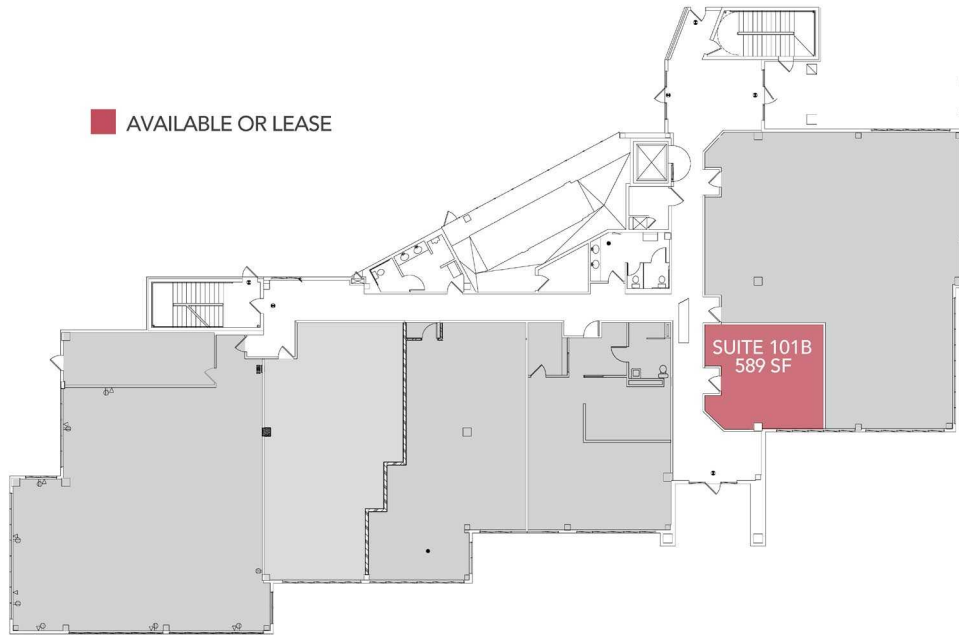
Jami Topping
BROKER
(360) 763-4995
jami@rantsgroup.com

Zeke Rehn
MANAGING BROKER
(360) 915-5678
zeke@rantsgroup.com

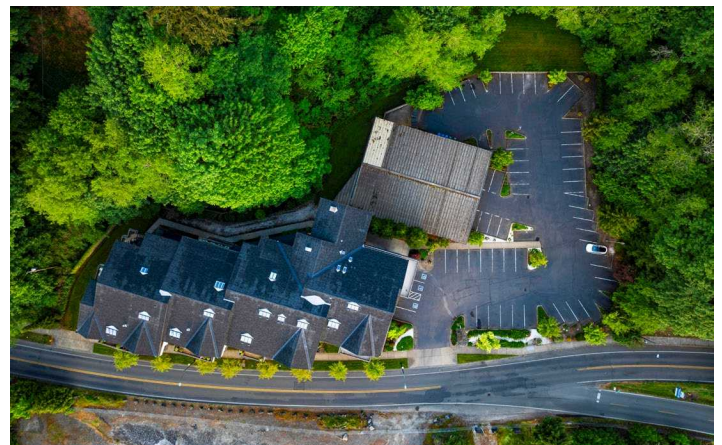
360-943-8060
RANTSGROUP.com

1801 WEST BAY DRIVE, SUITE 101B, OLYMPIA, WA | SMYTH LANDING

FIRST FLOOR



THIS FLOORPLAN IS NOT TO SCALE



CONTACT

Jami Topping
BROKER
(360) 763-4995
jami@rantsgroup.com

Zeke Rehn
MANAGING BROKER
(360) 915-5678
zeke@rantsgroup.com

This information, while obtained from sources we deem reliable, is not guaranteed. It is provided without any representation, warranty or guarantee, expressed or implied as to its accuracy. Prospective buyer or tenant should conduct an independent investigation and verification of all matters deemed to be material, including, but not limited to, statements of income and expenses. Consult your attorney, accountant, or other professional advisor.

360-943-8060 | RANTSGROUP.com