

Pacific Corporate Center

13555 SE 36th Street, Bellevue, WA 98006

High visibility location along I-90, next to T-Mobile and Eastgate



NEWMARK

JOE LYNCH

Executive Managing Director
425.362.1399
joe.lynch@nrmk.com

DAN HARDEN

Senior Managing Director
425.362.1393
dan.harden@nrmk.com

Highlights



Lobby renovation completed Summer 2020



24/7 building security; including, interior/exterior cameras and alarms



Common lunchroom/ cafeteria that may be reserved for private events or functions



Workout facility with mens' and womens' showers and lockers



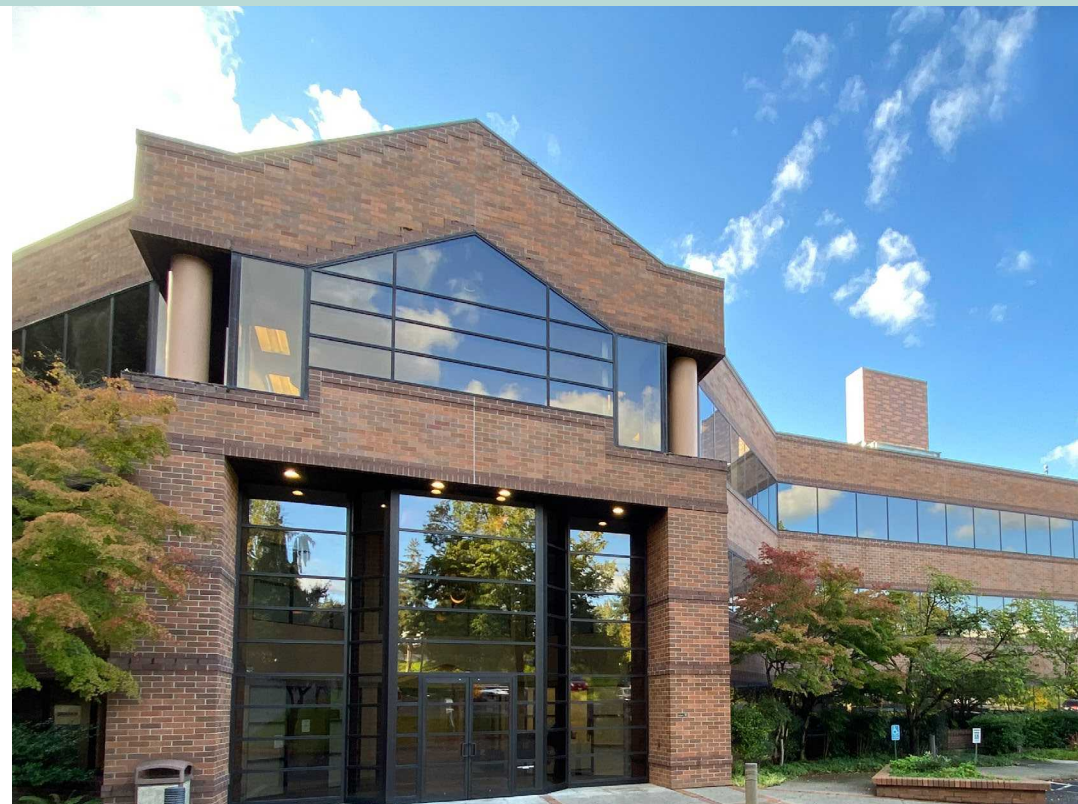
Above average parking ratio of 4.00/1000 SF; Free surface parking, and garage parking at market rates



Building system and electrical power service backed up by generator



Temperature controlled storage space available from 150 to 200 square feet.





Renovations

Completed Summer 2020, all of the common areas and tenant amenities, including the fitness center and common lunchroom, were updated with northwest contemporary finishes for a unique and Class A experience.



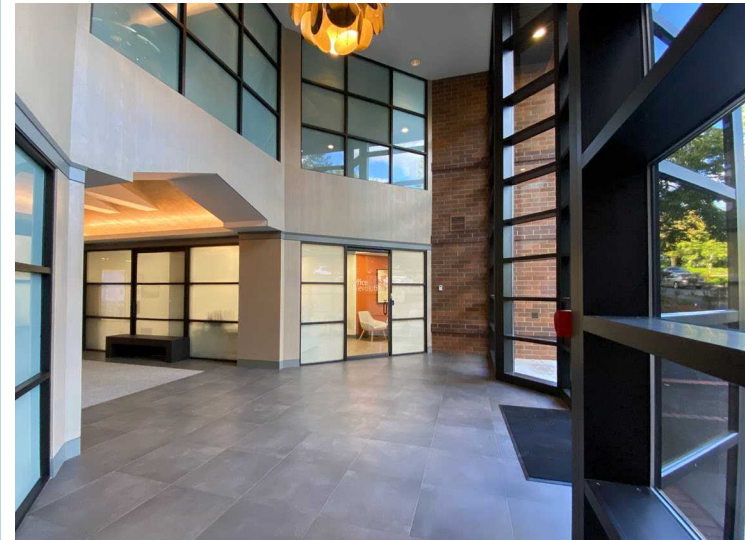
LOBBY VIRTUAL TOUR



FITNESS CENTER VIRTUAL TOUR



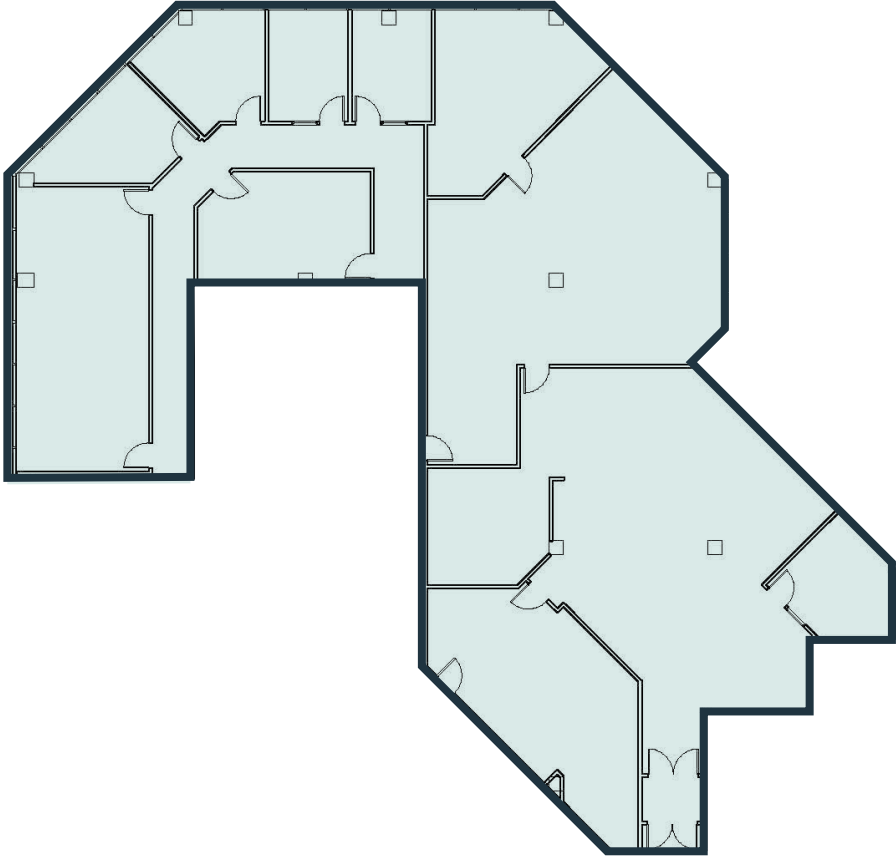
CAFETERIA VIRTUAL TOUR



1ST FLOOR

Suite 120 • 6,477 RSF

Available June 2026



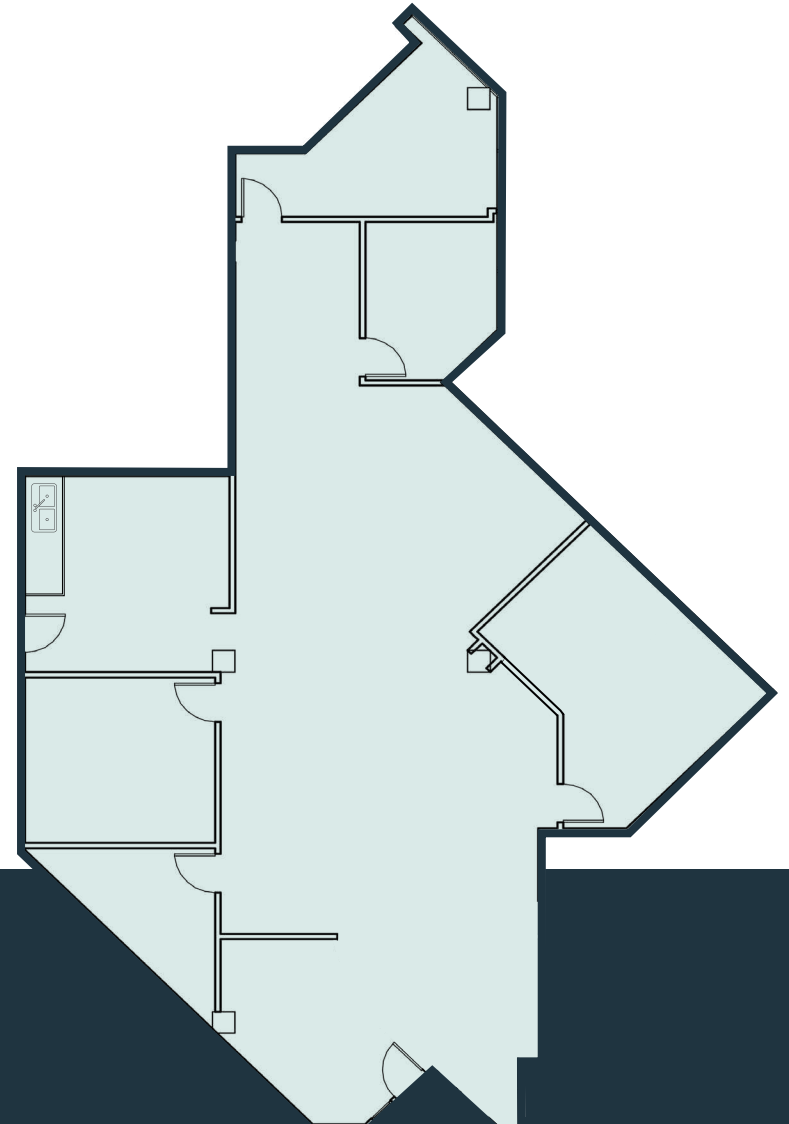
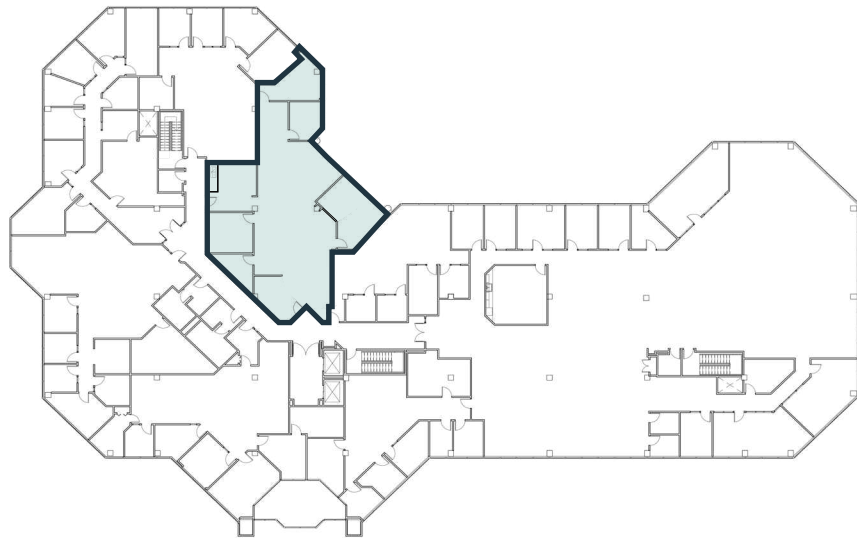
2ND FLOOR

Suite 230 • 2,990 RSF

Available July 2026



SUITE 230 VIRTUAL TOUR



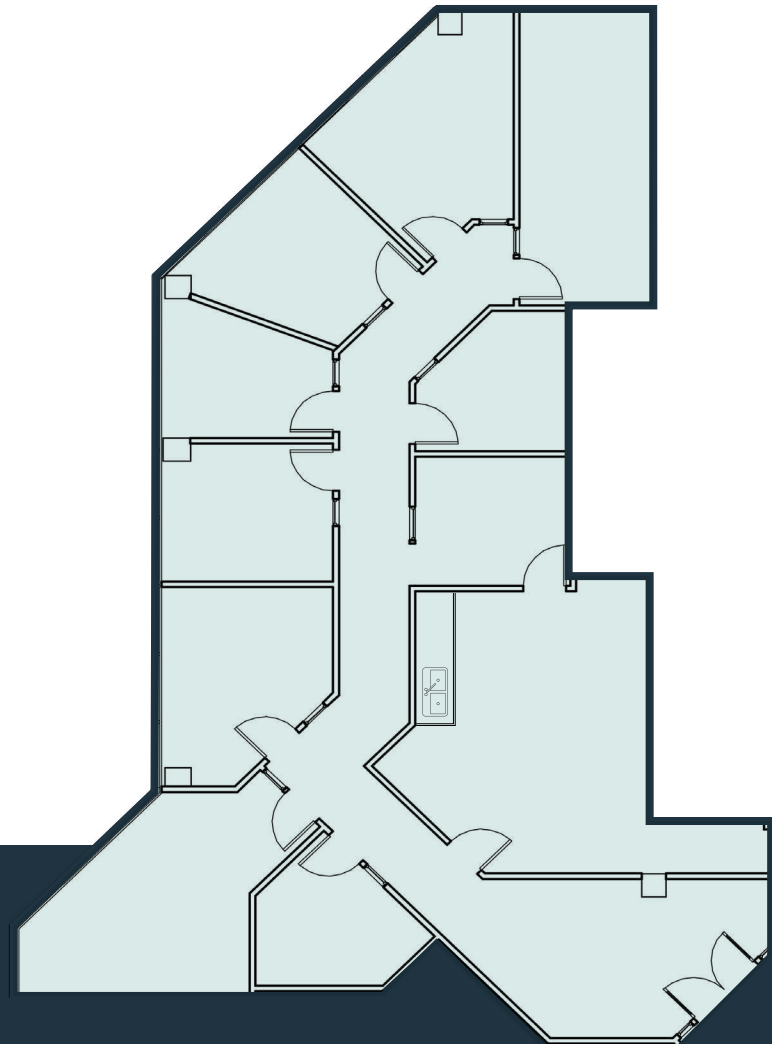
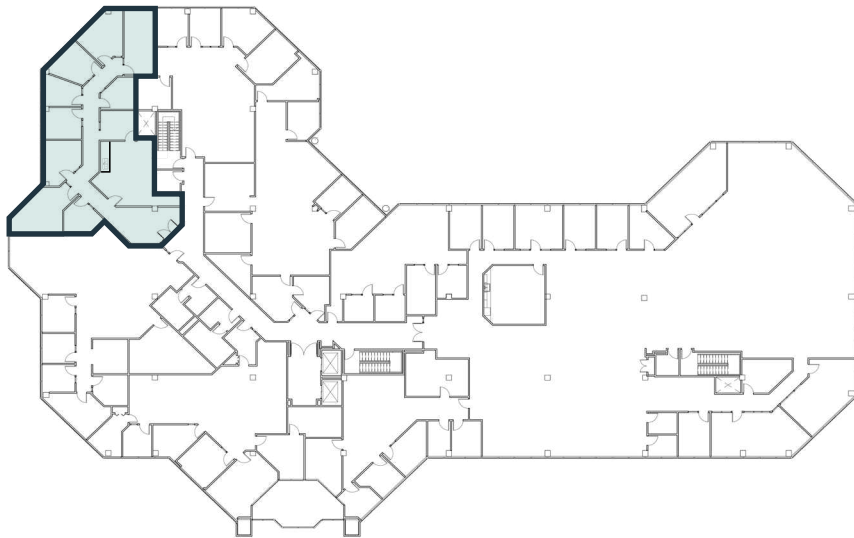
2ND FLOOR

Suite 260 • 2,854 RSF

Available Now



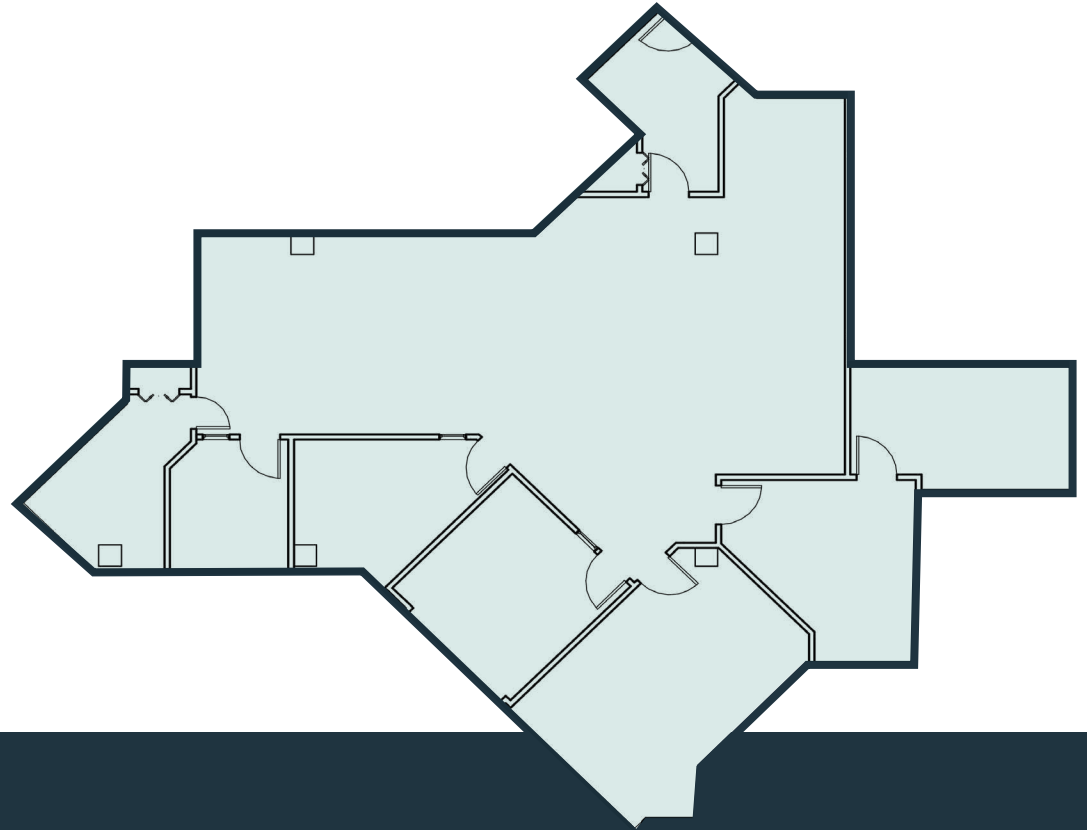
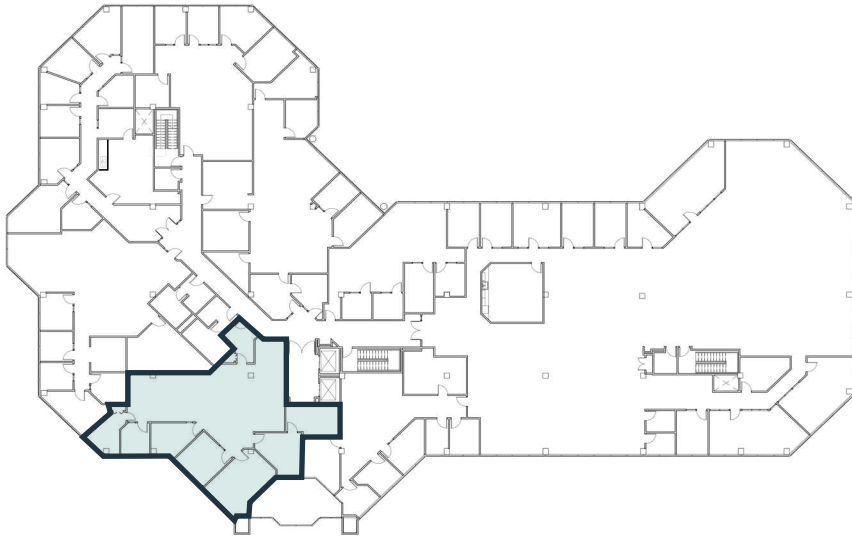
SUITE 260 VIRTUAL TOUR



2ND FLOOR

Suite 280 • 2,646 RSF

Available Now



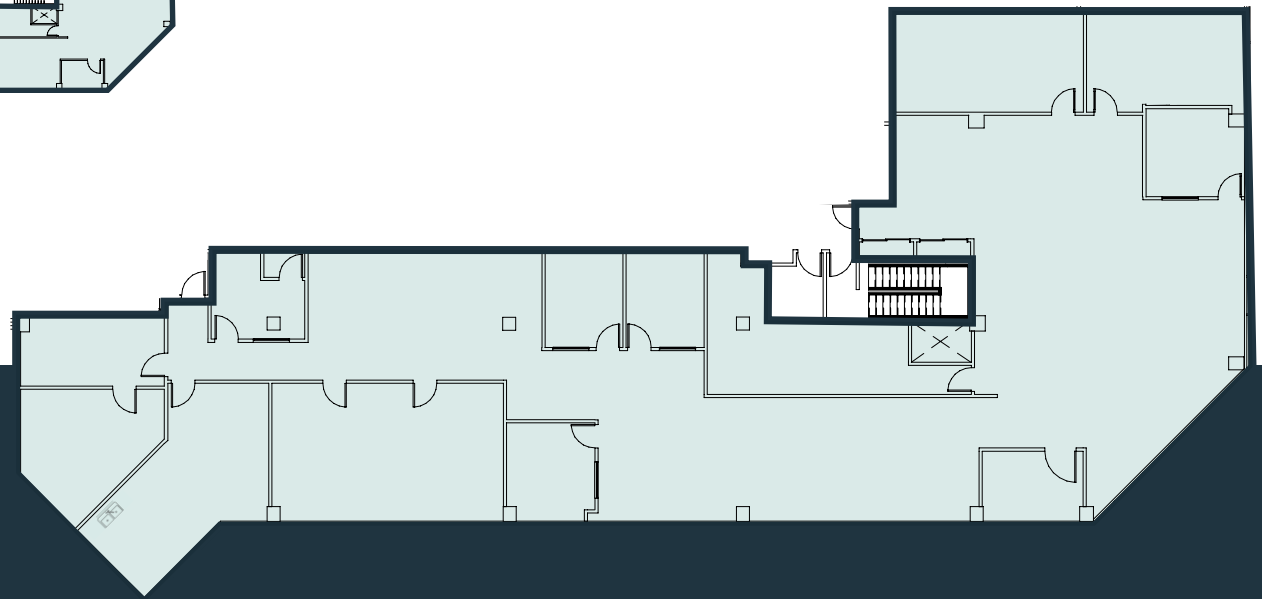
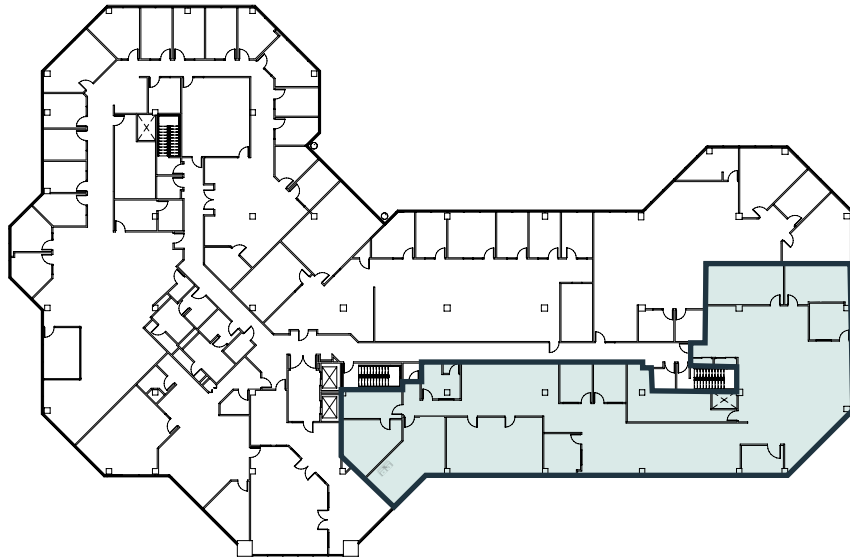
3RD FLOOR

Suite 350 • 7,243 RSF

Available Now



SUITE 350 VIRTUAL TOUR



I-90 AMENITIES MAP

