

RETAIL PROPERTY FOR LEASE

# THREE RIVERS CROSSING

351 Three Rivers Dr, Kelso, WA 98626



## AVAILABLE SPACES

792 SF - 4,544 SF



**ThreeRivers**  
C R O S S I N G

## LEASE RATES

\$792-\$4,544

Three Rivers Crossing offers prime retail opportunities in a highly desirable Kelso location just off the I-5 freeway. Available spaces feature flexible, open-concept layouts designed to showcase your business, with excellent parking ratios, prominent signage, and close proximity to schools and hotels create an ideal environment for attracting customers. The center is anchored by a strong mix of national and local co-tenants, ensuring steady traffic and exposure. Spaces ranging from 792 to 4,544 SF, are move-in ready, and tenant improvements may be available for qualified tenants. Lease rates vary by space. Contact us today for details or to schedule a private tour.

**Chris Roewe | Owner/Broker**  
C. 360.556.5101  
chris@woodfordcre.com

**Lindsay Johnson | Licensed Assistant**  
O. 360.501.5500  
lindsay@woodfordcre.com



CALL FOR LEASE RATES!



360-501-5500

\*Available Spaces Shown in Orange



For Full Directory List:  
<https://threeriverscrossing.com/directory/>

Suites	Square Footage	Price
1127	1,460 SF	\$1,460.00
1128	1,167 SF	\$1,167.00
1177	1,322 SF	\$1,322.50
1190	2,277 SF	\$2,277.00
1201	4,544 SF	\$4,544.00
1105	792 SF	\$792.00



**DISCLAIMER**

The information contained herein has been obtained from sources we understand to be reliable. Whilst we do not doubt its accuracy it has not been verified & we make no guarantees, warranty, or representations about it. Any projections, opinions, assumptions or estimates used are for example only. You & your advisors should conduct a careful independent investigation of the property to determine the property's satisfaction to your needs.  
 © Woodford Commercial Real Estate.




# ANCHORED RETAIL SPACE IN HIGH TRAFFIC AREA



2023 Demographics	1-Mile	3-Mile	5-Mile
Estimated Population	19,400	65,200	85,800
Avg. Household Income	\$62,300	\$64,600	\$68,700
Number of Employees	15,600	52,100	69,000




 woodfordcre.com

 chris@woodfordcre.com

## GET IN TOUCH

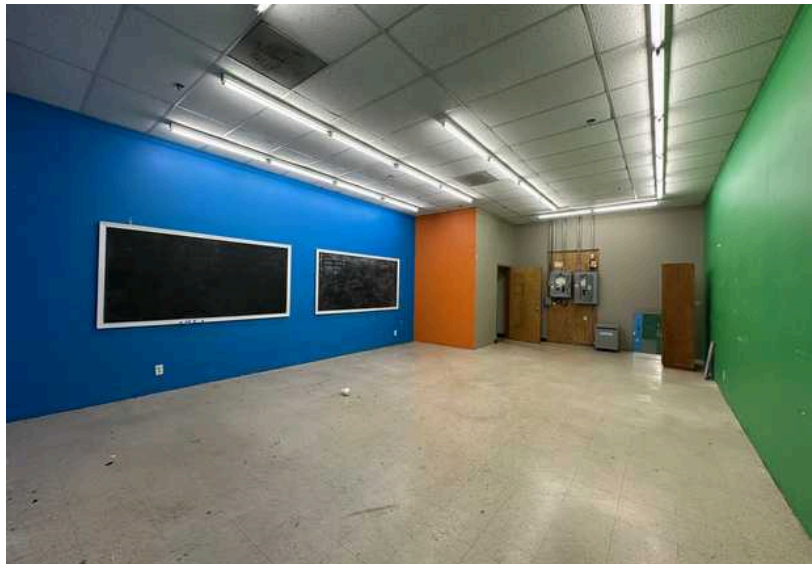
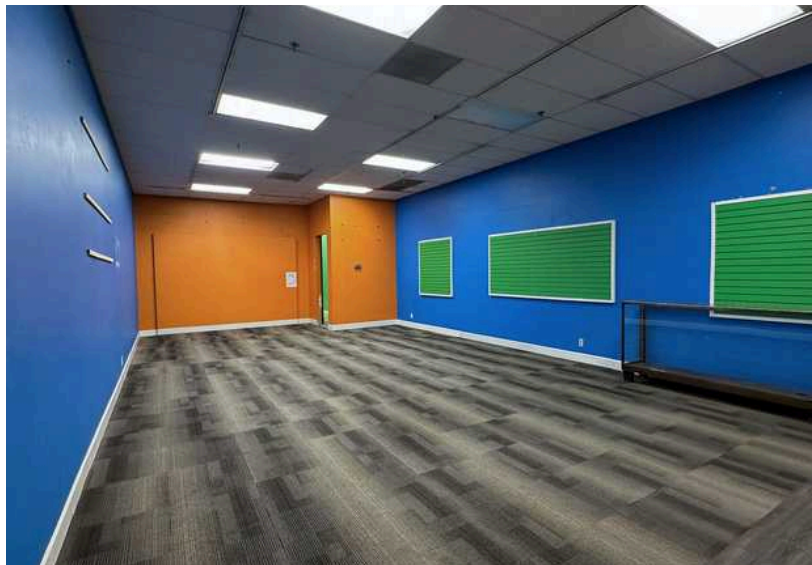
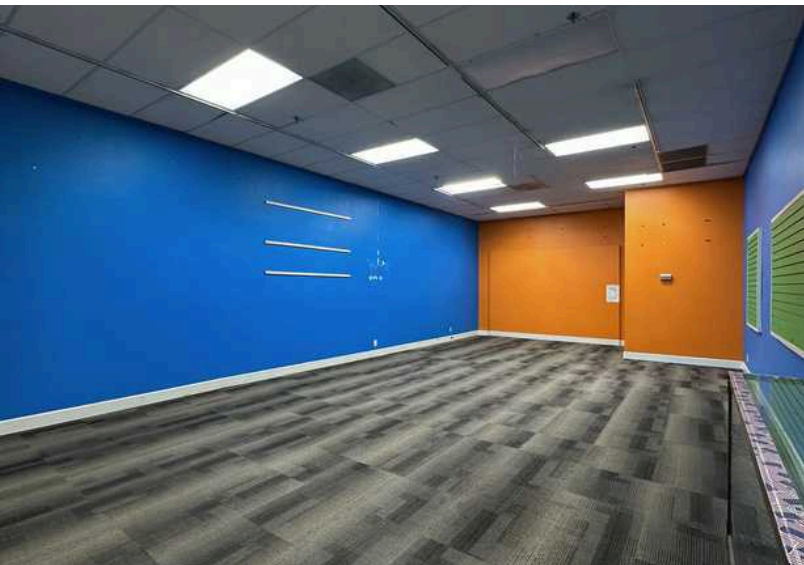
Chris Roewe  
Owner/Broker

Lindsay Johnson  
Licensed Assistant

 (360) 501-5500

 lindsay@woodfordcre.com

SUITE 1127 PHOTOS



woodfordcre.com



chris@woodfordcre.com

**GET IN TOUCH**

Chris Roewe  
Owner/Broker

Lindsay Johnson  
Licensed Assistant

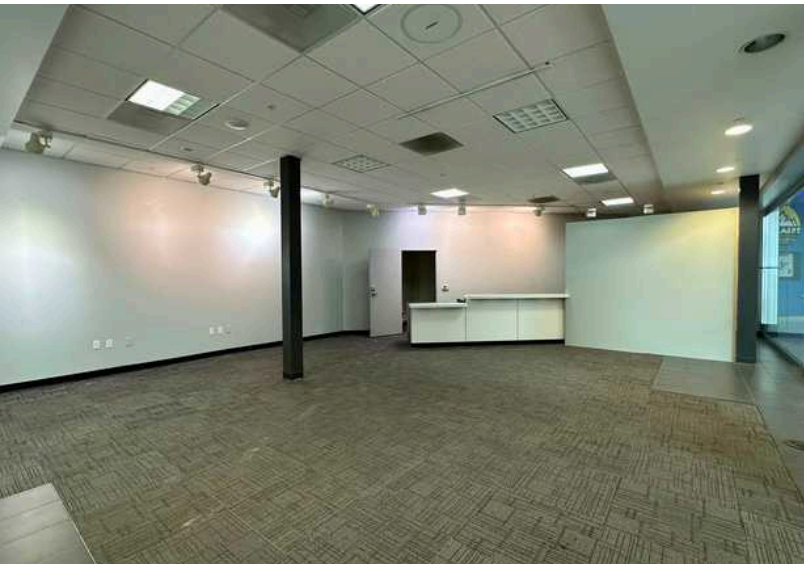
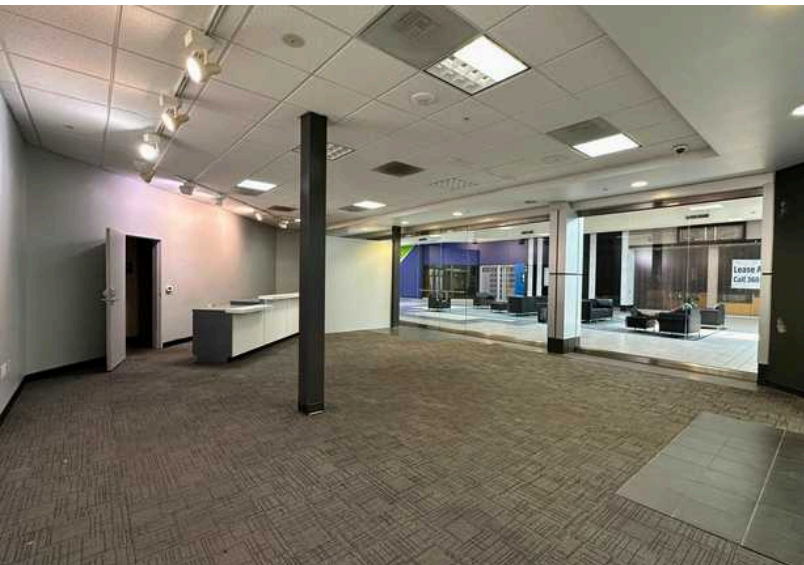


(360) 501-5500



lindsay@woodfordcre.com

SUITE 1128 PHOTOS



woodfordcre.com



chris@woodfordcre.com

**GET IN TOUCH**

Chris Roewe  
Owner/Broker

Lindsay Johnson  
Licensed Assistant



(360) 501-5500



lindsay@woodfordcre.com

# SUITE 1105 PHOTOS



woodfordcre.com



chris@woodfordcre.com

**GET IN TOUCH**

Chris Roewe  
Owner/Broker

Lindsay Johnson  
Licensed Assistant

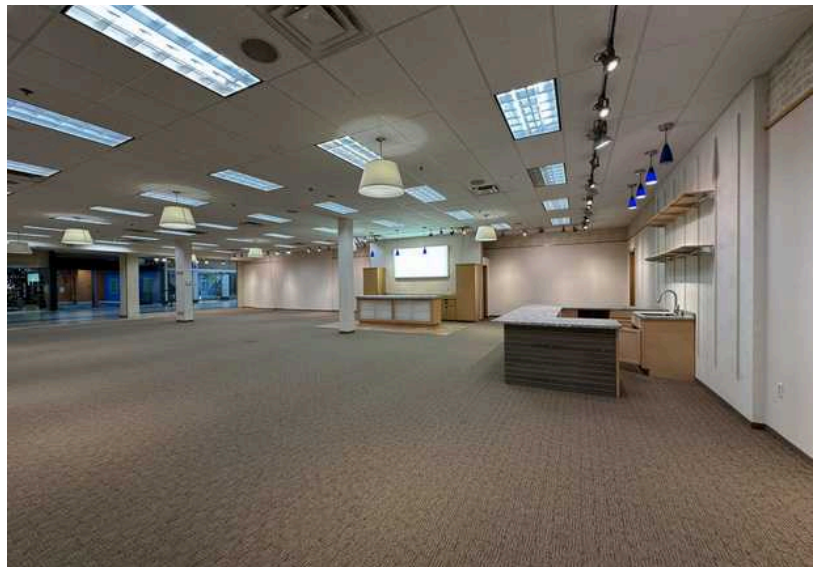
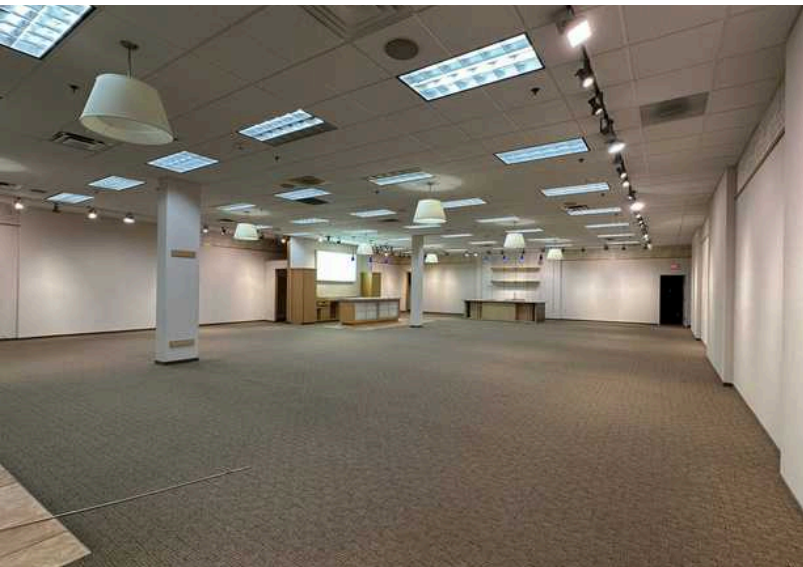
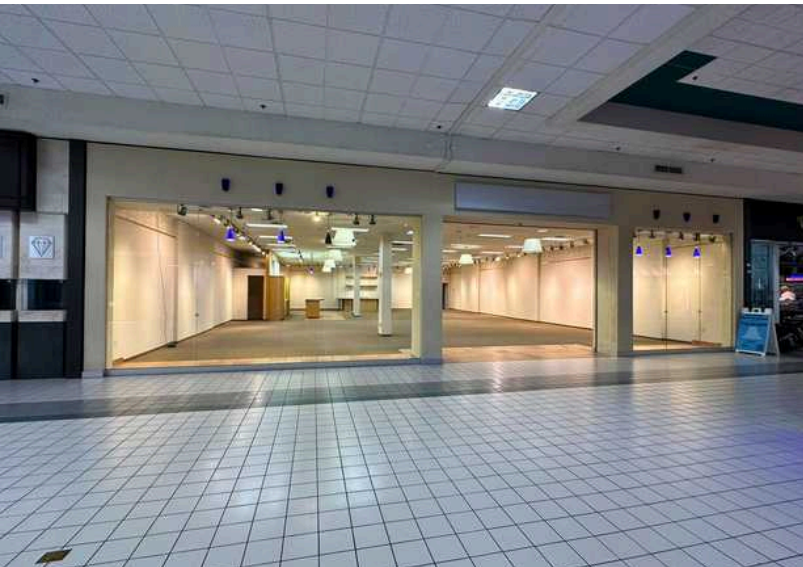


(360) 501-5500



lindsay@woodfordcre.com

SUITE 1201 PHOTOS



woodfordcre.com



chris@woodfordcre.com

**GET IN TOUCH**

Chris Roewe  
Owner/Broker

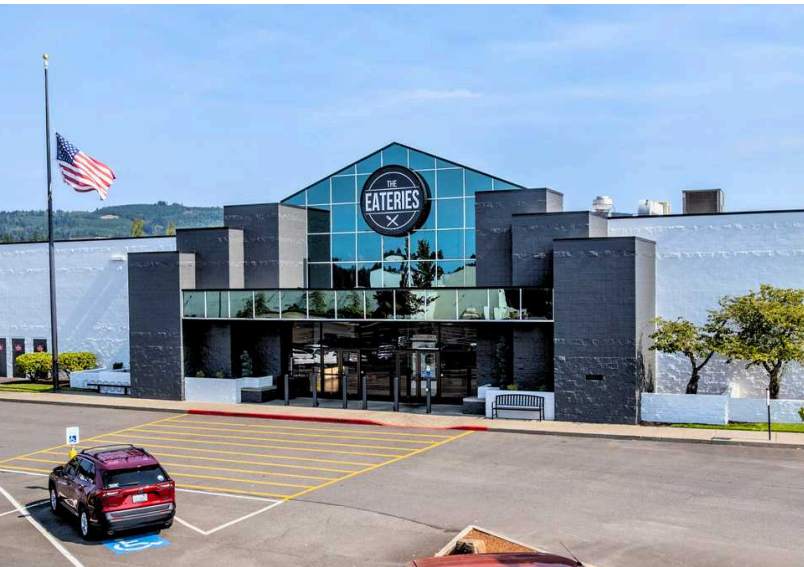
Lindsay Johnson  
Licensed Assistant



(360) 501-5500



lindsay@woodfordcre.com



woodfordcre.com



chris@woodfordcre.com

GET IN TOUCH

Chris Roewe  
Owner/Broker

Lindsay Johnson  
Licensed Assistant



(360) 501-5500



lindsay@woodfordcre.com